

# Elemax™ 2600 Air & Water Resistive Barrier (AWB) Coating System

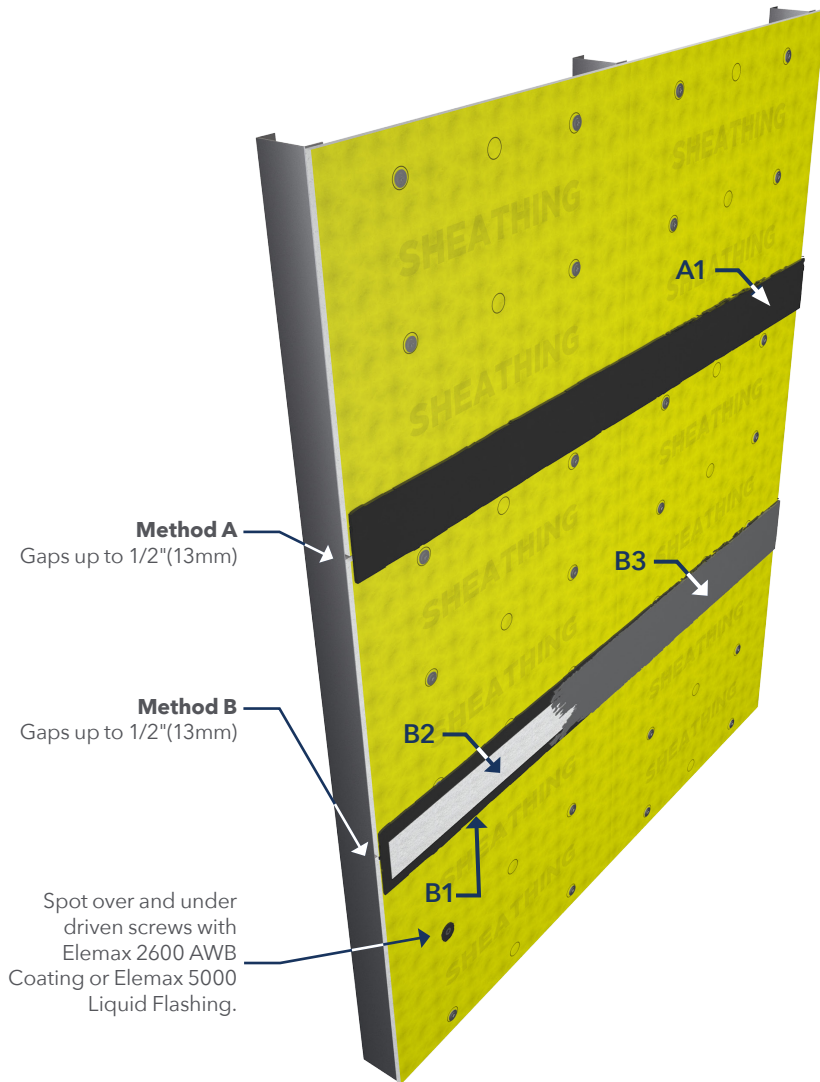
Control humidity. Maintain air quality.  
Improve energy efficiency.

## CONTENTS

Sheathing Joint & Fastener Treatment.....	02
Static Joints > 1/2", Expansion & Drift Joints .....	03
Penetrations – Method A: Elemax™ 5000 Liquid Flashing .....	04
Penetrations – Method B: RF100 Reinforcing Fabric.....	05
Rough Opening – Method A: Elemax 5000 Liquid Flashing .....	06
Rough Opening – Method B: RF100 Reinforcing Fabric.....	07
Rough Opening – Method C: Elemax SS Flashing .....	08
Window Flange Treatment .....	09
Window Head.....	10
Window Jamb .....	11
Window Sill.....	12
Pan Flashing .....	13
Window Head – Through Wall Flashing .....	14
Shelf Angle .....	15
Termination at Grade – Flush With Foundation.....	16
Termination at Grade – Sheathing Overlapping Foundation.....	17
Termination at Foundation – Through Wall Flashing at Base .....	18
Inside/Outside Corners – Method A: Elemax 5000 Liquid Flashing .....	19
Inside/Outside Corners – Method B: RF100 Reinforcing Fabric.....	20
Change in Substrate .....	21
Brick Tie / Anchor Installed Prior to Elemax 2600 AWB Coating.....	22
Brick Tie / Anchor Installed After Elemax 2600 AWB Coating.....	23
Parapet .....	24
Substrate Defects .....	25
Self-Adhering Membrane Tie In-Method A.....	26
Self-Adhering Membrane Tie In-Method B .....	27
Head of Wall Expansion / Deflection Joint – Sheathing Past Floorline .....	28
Head of Wall Expansion / Deflection Joint – Sheathing Flushed with Floorline.....	29
Head of Wall Expansion / Deflection Joint – Sheathing Recessed of Floorline .....	30
Sloped Offset Application .....	31
Horizontal Offset Application.....	32
Z-Girt Façade Anchor .....	33

Before purchasing or using any Momentive products, please visit [www.siliconesforbuilding.com/LegalDisclaimer](http://www.siliconesforbuilding.com/LegalDisclaimer) to view our full product and sales disclaimer.

Copyright 2025 Momentive Performance Materials Inc. All rights reserved.



**METHOD A**

**A1:** Apply Elemax 5000 Liquid Flashing and trowel over the joint seam to a nominal 1-1/2" (38 mm) width centered on the joint at a minimum thickness of 20–40 mils (508–1016 µ).

**METHOD B**

**B1:** Apply a liberal coat (min. 10 mils [254 µ]) of Elemax 2600 AWB Coating in sufficient width to accommodate RF100 Reinforcing Fabric.  
**B2:** While still wet, set RF100 Reinforcing Fabric into the Elemax 2600 AWB Coating and center on joint.  
**B3:** Apply a second coat (min. 10 mils [254 µ]) of Elemax 2600 AWB Coating immediately over the RF100 Reinforcing Fabric ensuring a pin hole free application is achieved.

**NOTES:**

- Sheathing joints may be treated before or after the application of Elemax 2600 AWB Coating.
- Ensure Elemax 2600 AWB Coating is dry to the touch prior to the application of Elemax 5000 Liquid Flashing.
- Method A can be used up to 1/4" (6 mm) without stud backing and up to 1/2" (13 mm) with stud backing.
- The use of a notched trowel may be utilized to simplify the application of Elemax 5000 Liquid Flashing.
- For gaps > 1/2" (13 mm) see detail A102.
- See Elemax 2600 AWB Coating data sheet for list of additional acceptable sealants/liquid flashing.

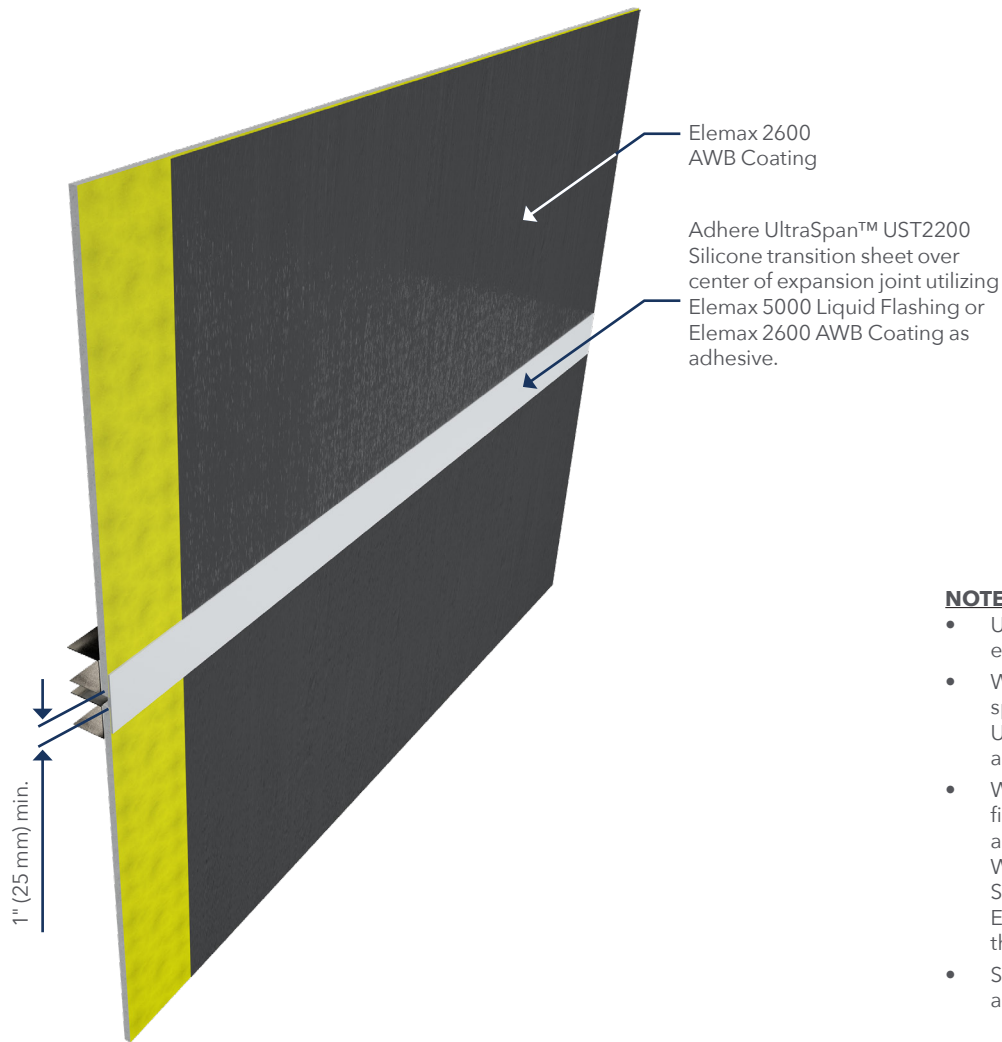
**SHEATHING JOINT & FASTENER TREATMENT  
ELEMAX 2600 AIR AND WATER RESISTIVE BARRIER COATING SYSTEM**

**DETAILS #: AWB - 01**

THE ABOVE DETAIL IS FOR ILLUSTRATION PURPOSES ONLY. IT IS INTENDED AS A GUIDELINE TO ASSIST MOMENTIVE PRODUCT USERS IN DEVELOPING PROJECT SPECIFIC DETAILS. CONSULT APPROPRIATE SPECIFICATION DOCUMENTS, DATA SHEET, BUILDING CODES AND ANY OTHER INFORMATION DEEMED NECESSARY FOR SPECIFIC REQUIREMENTS. MOMENTIVE PRODUCT USERS ARE RESPONSIBLE FOR DETERMINING THE SUITABILITY OF MOMENTIVE PRODUCTS FOR THE PARTICULAR APPLICATION AND ALL RELATED PROJECT DETAILS. MOMENTIVE MAKES NO WARRANTY, EXPRESS OR IMPLIED, WITH RESPECT TO THE PERFORMANCE SUITABILITY OR FITNESS FOR INTENDED USE OF ITS PRODUCTS IN ANY USER'S APPLICATION. ANY SALE OF PRODUCTS OR DELIVERY OF CUSTOMER SUPPORT AND ADVICE BY MOMENTIVE PERFORMANCE MATERIALS INC. AND/OR ANY OF ITS AFFILIATES. ("MOMENTIVE") IS MADE EXCLUSIVELY UNDER MOMENTIVE'S STANDARD CONDITIONS OF SALE, WHICH ARE AVAILABLE AT SILICONESFORBUILDING.COM. COPYRIGHT 2025 MOMENTIVE PERFORMANCE MATERIALS INC. ALL RIGHTS RESERVED.

**SCALE: N.T.S.**

**DATE: 2017 - 03 - 27**



**NOTES:**

- UltraSpan UST2200 Silicone Transition Sheet may be applied either before or after application of Elemax 2600 AWB Coating.
- When utilizing Elemax 5000 Liquid Flashing as an adhesive spread/trowel smooth to 20–40 mils (508–1016  $\mu$ ) thick. Adhere UltraSpan UST2200 Silicone Transition Sheet and ensure edges are fully embedded in Elemax 5000 Liquid Flashing.
- When utilizing Elemax 2600 AWB Coating as an adhesive, apply first coat (min. 10 mils) [254  $\mu$ ] by roller in sufficient width to accommodate UltraSpan UST2200 Silicone Transition Sheet. Wait until coating becomes tacky and press UltraSpan UST2200 Silicone Transition Sheet into the coating. Apply a second coat of Elemax 2600 AWB Coating (min. 10 mils [254  $\mu$ ]) immediately over the UltraSpan UST2200 Silicone Transition Sheet.
- See Elemax 2600 AWB Coating data sheet for list of additional acceptable sealants/liquid flashing.

STATIC JOINTS > 1/2", EXPANSION & DRIFT JOINTS  
ELEMEX 2600 AIR AND WATER RESISTIVE BARRIER COATING SYSTEM

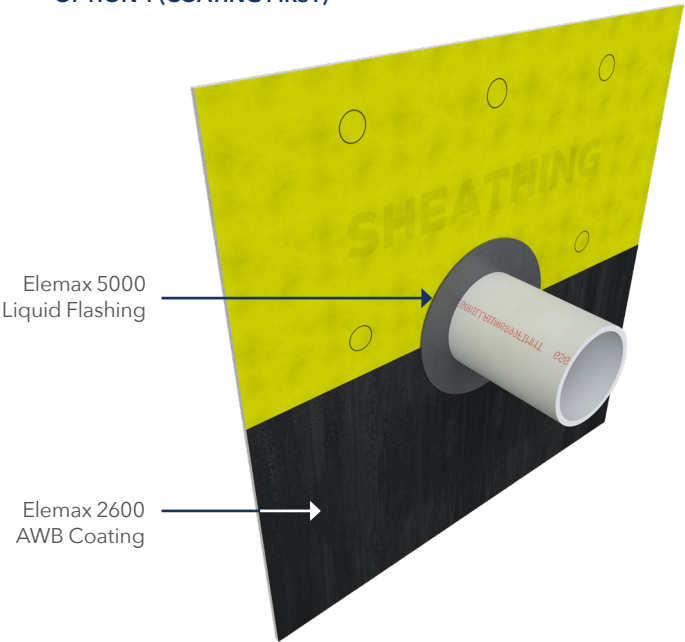
DETAILS #: AWB - 02

THE ABOVE DETAIL IS FOR ILLUSTRATION PURPOSES ONLY. IT IS INTENDED AS A GUIDELINE TO ASSIST MOMENTIVE PRODUCT USERS IN DEVELOPING PROJECT SPECIFIC DETAILS. CONSULT APPROPRIATE SPECIFICATION DOCUMENTS, DATA SHEET, BUILDING CODES AND ANY OTHER INFORMATION DEEMED NECESSARY FOR SPECIFIC REQUIREMENTS. MOMENTIVE PRODUCT USERS ARE RESPONSIBLE FOR DETERMINING THE SUITABILITY OF MOMENTIVE PRODUCTS FOR THE PARTICULAR APPLICATION AND ALL RELATED PROJECT DETAILS. MOMENTIVE MAKES NO WARRANTY, EXPRESS OR IMPLIED, WITH RESPECT TO THE PERFORMANCE SUITABILITY OR FITNESS FOR INTENDED USE OF ITS PRODUCTS IN ANY USER'S APPLICATION. ANY SALE OF PRODUCTS OR DELIVERY OF CUSTOMER SUPPORT AND ADVICE BY MOMENTIVE PERFORMANCE MATERIALS INC. AND/OR ANY OF ITS AFFILIATES. ("MOMENTIVE") IS MADE EXCLUSIVELY UNDER MOMENTIVE'S STANDARD CONDITIONS OF SALE, WHICH ARE AVAILABLE AT SILICONESFORBUILDING.COM. COPYRIGHT 2025 MOMENTIVE PERFORMANCE MATERIALS INC. ALL RIGHTS RESERVED.

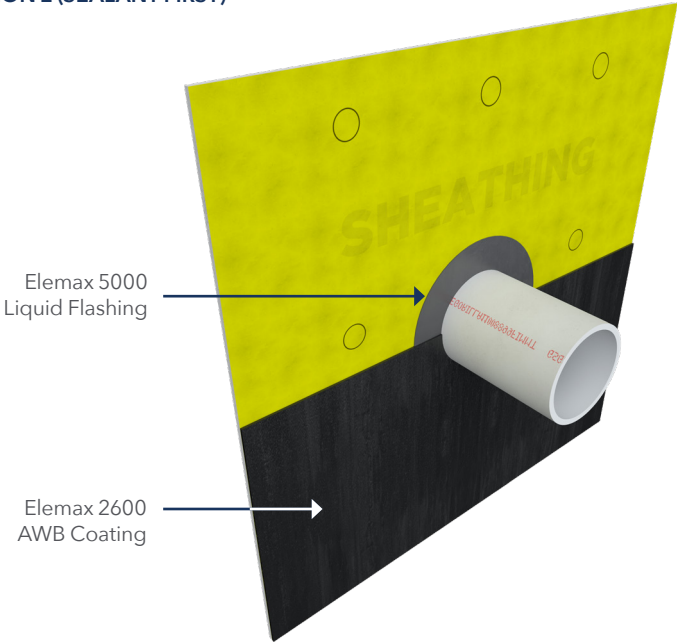
SCALE: N.T.S.

DATE: 2017 - 03 - 27

OPTION 1 (COATING FIRST)



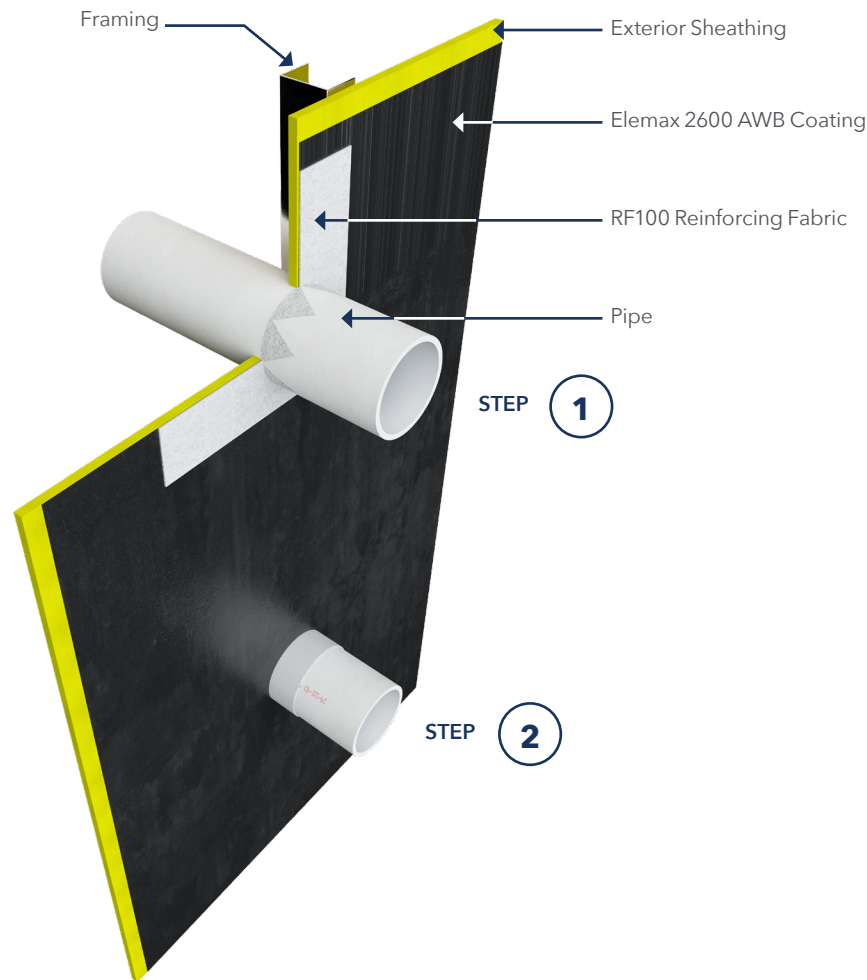
OPTION 2 (SEALANT FIRST)



- NOTES:**
- Ensure areas at penetration are dry, clean and free of any dirt, debris or contaminants.
  - Penetrations may be treated before or after the application of Elemax 2600 AWB Coating.
  - **OPTION 1-** Apply a continuous application of Elemax 2600 AWB Coating over entire face of sheathing and around perimeter of penetration. Allow Elemax 2600 AWB Coating to cure sufficiently prior sealing the penetration with Elemax 5000 Liquid Flashing. Use backer rod or polyurethane spray foam where necessary. Trim spray foam flush prior to detailing.
  - **OPTION 2-** Seal perimeter of penetration with Elemax 5000 Liquid Flashing . Use backer rod or polyurethane spray foam where necessary. Trim spray foam flush prior to detailing. Apply a continuous application of Elemax 2600 AWB Coating over entire face of sheathing overlapping the sealant bead at the penetration perimeter.
  - See Elemax 2600 AWB Coating data sheet for list of additional acceptable sealants/liquid flashing.

Page 4	PENETRATIONS — METHOD A: ELEMEX 5000 LIQUID FLASHING ELEMEX 2600 AIR AND WATER RESISTIVE BARRIER COATING SYSTEM	DETAILS #: AWB - 03
	THE ABOVE DETAIL IS FOR ILLUSTRATION PURPOSES ONLY. IT IS INTENDED AS A GUIDELINE TO ASSIST MOMENTIVE PRODUCT USERS IN DEVELOPING PROJECT SPECIFIC DETAILS. CONSULT APPROPRIATE SPECIFICATION DOCUMENTS, DATA SHEET, BUILDING CODES AND ANY OTHER INFORMATION DEEMED NECESSARY FOR SPECIFIC REQUIREMENTS. MOMENTIVE PRODUCT USERS ARE RESPONSIBLE FOR DETERMINING THE SUITABILITY OF MOMENTIVE PRODUCTS FOR THE PARTICULAR APPLICATION AND ALL RELATED PROJECT DETAILS. MOMENTIVE MAKES NO WARRANTY, EXPRESS OR IMPLIED, WITH RESPECT TO THE PERFORMANCE SUITABILITY OR FITNESS FOR INTENDED USE OF ITS PRODUCTS IN ANY USER'S APPLICATION. ANY SALE OF PRODUCTS OR DELIVERY OF CUSTOMER SUPPORT AND ADVICE BY MOMENTIVE PERFORMANCE MATERIALS INC. AND/OR ANY OF ITS AFFILIATES. ("MOMENTIVE") IS MADE EXCLUSIVELY UNDER MOMENTIVE'S STANDARD CONDITIONS OF SALE, WHICH ARE AVAILABLE AT SILICONESFORBUILDING.COM. COPYRIGHT 2025 MOMENTIVE PERFORMANCE MATERIALS INC. ALL RIGHTS RESERVED.	SCALE: N.T.S.
		DATE: 2017 - 03 - 27





**NOTES:**

- Cut a square piece of RF100 Reinforcing Fabric large enough to extend past the pipe by 2" (50 mm) in all directions.
- At the center of the square piece of RF100 Reinforcing Fabric, cut a small hole with a razor blade or scissors.
- Cut an "X" using the small hole previously cut as your starting point. Rotate the square about 45° and cut another X.
- Apply cut RF100 Reinforcing Fabric over the pipe with a minimum of 2" (50 mm) on each side with the cut-tabs pointed outward. Press RF100 Reinforcing Fabric flush with the sheathing, see **Step 1**.
- Embed the RF100 Reinforcing Fabric in Elemax 2600 AWB Coating and coat the tabs around the pipe, see **Step 2**.
- Wrap a 1" (25 mm) strip of RF100 Reinforcing Fabric embedded in Elemax 2600 AWB Coating around the tabs.
- See Elemax 2600 AWB Coating data sheet for list of additional acceptable sealants/liquid flashing.

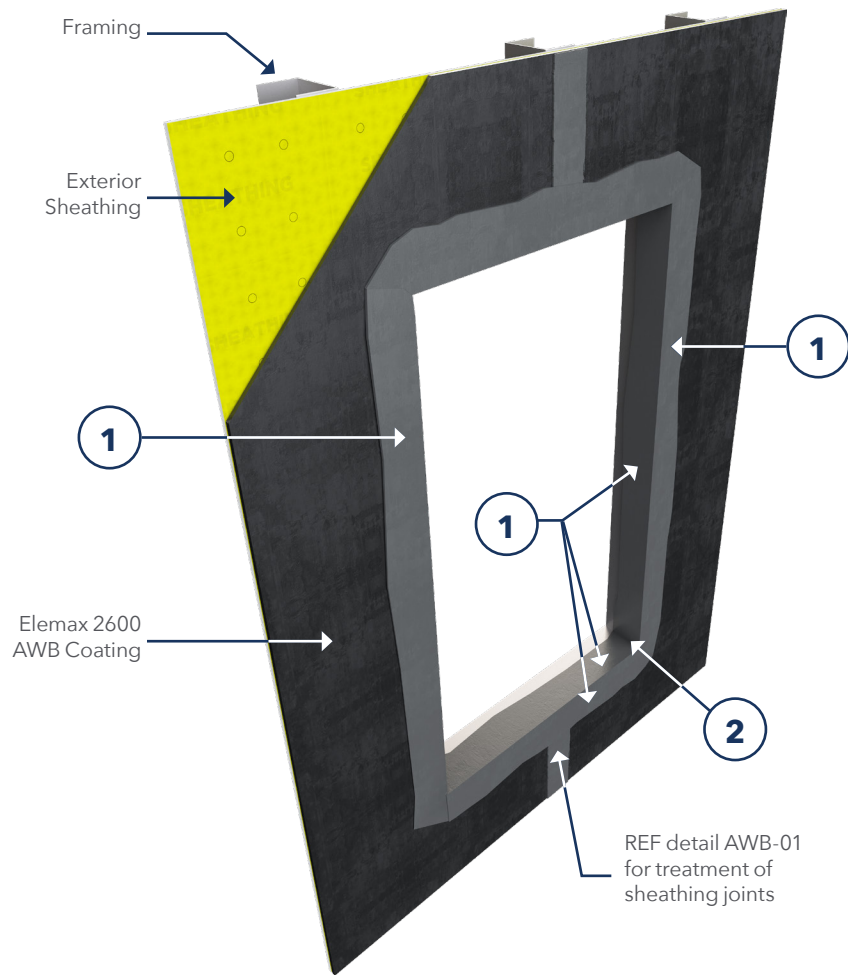
**PENETRATIONS — METHOD B: RF100 REINFORCING FABRIC  
ELEMEX 2600 AIR AND WATER RESISTIVE BARRIER COATING SYSTEM**

**DETAILS #:** AWB - 04

THE ABOVE DETAIL IS FOR ILLUSTRATION PURPOSES ONLY. IT IS INTENDED AS A GUIDELINE TO ASSIST MOMENTIVE PRODUCT USERS IN DEVELOPING PROJECT SPECIFIC DETAILS. CONSULT APPROPRIATE SPECIFICATION DOCUMENTS, DATA SHEET, BUILDING CODES AND ANY OTHER INFORMATION DEEMED NECESSARY FOR SPECIFIC REQUIREMENTS. MOMENTIVE PRODUCT USERS ARE RESPONSIBLE FOR DETERMINING THE SUITABILITY OF MOMENTIVE PRODUCTS FOR THE PARTICULAR APPLICATION AND ALL RELATED PROJECT DETAILS. MOMENTIVE MAKES NO WARRANTY, EXPRESS OR IMPLIED, WITH RESPECT TO THE PERFORMANCE SUITABILITY OR FITNESS FOR INTENDED USE OF ITS PRODUCTS IN ANY USER'S APPLICATION. ANY SALE OF PRODUCTS OR DELIVERY OF CUSTOMER SUPPORT AND ADVICE BY MOMENTIVE PERFORMANCE MATERIALS INC. AND/OR ANY OF ITS AFFILIATES. ("MOMENTIVE") IS MADE EXCLUSIVELY UNDER MOMENTIVE'S STANDARD CONDITIONS OF SALE, WHICH ARE AVAILABLE AT SILICONESFORBUILDING.COM. COPYRIGHT 2025 MOMENTIVE PERFORMANCE MATERIALS INC. ALL RIGHTS RESERVED.

**SCALE:** N.T.S.

**DATE:** 2017 - 03 - 27



1. Apply Elemax 5000 Liquid Flashing to the rough opening at a nominal 20–40 mils (508-1016  $\mu$ ) thickness. Spread/trowel the Elemax 5000 Liquid Flashing to a minimum of 3" (75 mm) onto wall and 3" (75 mm) into rough opening. Liquid flashing should be continuous and smooth while free of pockets, voids and/or pinholes.
2. Apply/tool liquid flashing to inside corners of rough opening to ensure seamless coverage.

**NOTES:**

- Ensure rough openings are dry, clean and free of dirt, debris and contaminants.
- Elemax 5000 Liquid Flashing may be installed before or after the application of Elemax 2600 AWB Coating. When installing before, the cut edges of gypsum sheathing may need to be coated with Elemax 2600 AWB Coating.
- Ensure Elemax 2600 AWB Coating is dry to the touch prior to the application of Elemax 5000 Liquid Flashing.
- It is recommended to check adhesion of products to steel studs prior to use. SS80 Primer can be used if needed.
- The use of USM UltraSpan pre-cured silicone molded corners may also be utilized. Ensure Elemax 5000 Liquid Flashing extends a min. 2" (50 mm) over USM UltraSpan corners properly embedded in Elemax 5000 Liquid Flashing.
- See Elemax 2600 AWB Coating data sheet for list of additional acceptable sealants/liquid flashing.

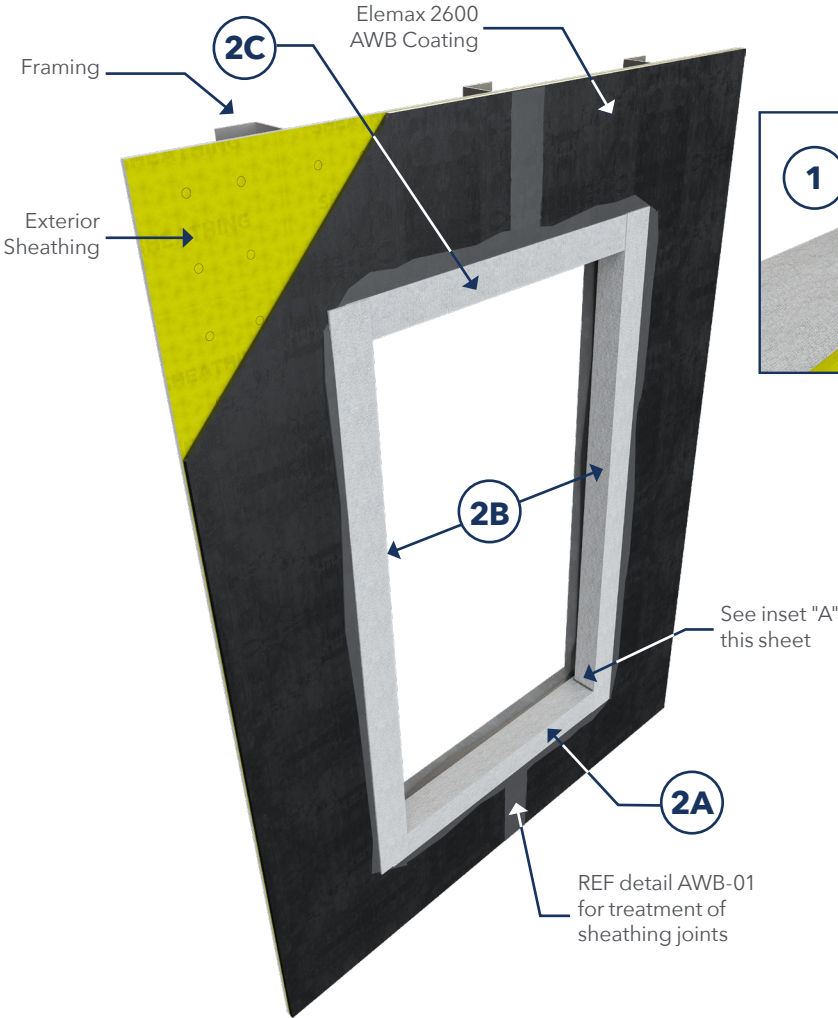
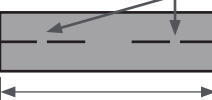
**ROUGH OPENING — METHOD A: ELEMEX 5000 LIQUID FLASHING  
ELEMEX 2600 AIR AND WATER RESISTIVE BARRIER COATING SYSTEM**

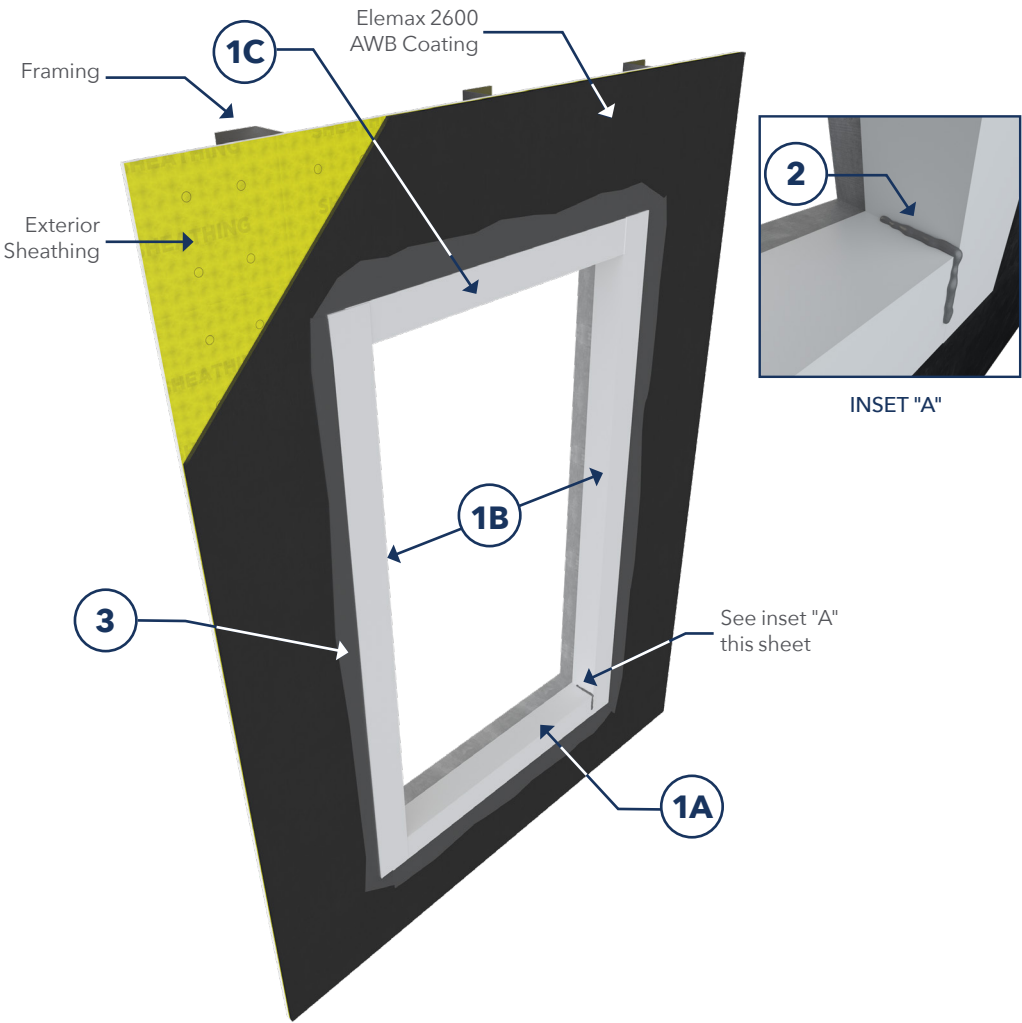
**DETAILS #:** AWB - 05

THE ABOVE DETAIL IS FOR ILLUSTRATION PURPOSES ONLY. IT IS INTENDED AS A GUIDELINE TO ASSIST MOMENTIVE PRODUCT USERS IN DEVELOPING PROJECT SPECIFIC DETAILS. CONSULT APPROPRIATE SPECIFICATION DOCUMENTS, DATA SHEET, BUILDING CODES AND ANY OTHER INFORMATION DEEMED NECESSARY FOR SPECIFIC REQUIREMENTS. MOMENTIVE PRODUCT USERS ARE RESPONSIBLE FOR DETERMINING THE SUITABILITY OF MOMENTIVE PRODUCTS FOR THE PARTICULAR APPLICATION AND ALL RELATED PROJECT DETAILS. MOMENTIVE MAKES NO WARRANTY, EXPRESS OR IMPLIED, WITH RESPECT TO THE PERFORMANCE SUITABILITY OR FITNESS FOR INTENDED USE OF ITS PRODUCTS IN ANY USER'S APPLICATION. ANY SALE OF PRODUCTS OR DELIVERY OF CUSTOMER SUPPORT AND ADVICE BY MOMENTIVE PERFORMANCE MATERIALS INC. AND/OR ANY OF ITS AFFILIATES. ("MOMENTIVE") IS MADE EXCLUSIVELY UNDER MOMENTIVE'S STANDARD CONDITIONS OF SALE, WHICH ARE AVAILABLE AT SILICONESFORBUILDING.COM. COPYRIGHT 2025 MOMENTIVE PERFORMANCE MATERIALS INC. ALL RIGHTS RESERVED.

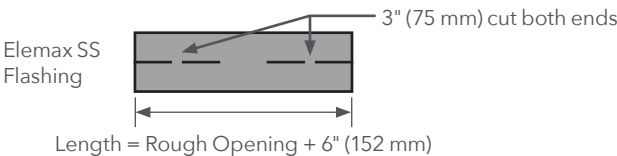
**SCALE:** N.T.S.

**DATE:** 2017 - 03 - 27

	<div data-bbox="121 240 953 1252"></div> <div data-bbox="1136 224 1919 643"><p>1. Apply Elemax 5000 Liquid Flashing to all visible gaps, framing corners and non-flush sheathing/framing transitions in the rough opening.</p><p>2. Cut minimum 6" (152 mm) RF100 Reinforcing Fabric to appropriate length and shape. Apply a liberal first coat (min. 10 mils [254 µl]) of Elemax 2600 AWB Coating sufficient to saturate RF100 Reinforcing Fabric and extend at least 1" (25 mm) beyond RF100 Reinforcing Fabric width. Place RF100 Reinforcing Fabric in Elemax 2600 AWB Coating and embed by applying a second coat (min. 10 mils [254 µl]) by roller of Elemax 2600 AWB Coating ensuring a pin hole free application is achieved. RF100 Reinforcing Fabric must extend a minimum of 3" (75 mm) onto wall and 3" (75 mm) into rough opening in the following order:</p><div data-bbox="1226 493 1919 643"><p>RF100 Reinforcing Fabric</p><p>3" (75 mm) cut both ends</p><p>Length = Rough Opening + 6" (152 mm)</p></div></div> <div data-bbox="1136 656 1919 873"><p><b>2A:</b> Apply RF100 Reinforcing Fabric to the sill area properly embedded in Elemax 2600 AWB Coating and centered over change of plane. Fold the cut segments up inside the corners.</p><p><b>2B:</b> Apply RF100 Reinforcing Fabric to the jamb areas properly embedded in Elemax 2600 AWB Coating and centered over change of plane. Overlap the RF100 Reinforcing Fabric in the bottom corners.</p><p><b>2C:</b> Apply RF100 Reinforcing Fabric to the header properly embedded in Elemax 2600 AWB Coating and centered over change of plane. Overlap the RF100 Reinforcing Fabric in the top corner.</p></div> <div data-bbox="974 873 1944 1273"><p><b>NOTES:</b></p><ul style="list-style-type: none"><li>• Ensure rough openings are dry, clean and free of dirt, debris and contaminants.</li><li>• Rough opening may be treated before or after the application of Elemax 2600 AWB Coating over wall areas. An additional coat of Elemax 2600 AWB Coating over areas treated with RF100 Reinforcing Fabric may be required to ensure a pin hole free application is achieved.</li><li>• Apply Elemax 5000 Liquid Flashing or Elemax 2600 AWB Coating to corners as needed to ensure seamless coverage.</li><li>• RF100 Reinforcing Fabric should be installed in manageable segments. Ensure RF100 Reinforcing Fabric segments overlap by a minimum 2" (50 mm).</li><li>• It is recommended to check adhesion of products to steel studs prior to use. SS80 Primer can be used if needed.</li><li>• The use of USM UltraSpan pre-cured silicone molded corners properly embedded in Elemax 5000 Liquid Flashing may be utilized. Ensure RF100 Reinforcing Fabric extends a min. 2" (50 mm) onto USM UltraSpan.</li><li>• See Elemax 2600 AWB Coating data sheet for list of additional acceptable sealants/liquid Flashing.</li></ul></div>	<p><b>DETAILS #:</b> AWB - 06</p> <p><b>SCALE:</b> N.T.S.</p> <p><b>DATE:</b> 2017 - 03 - 27</p>
<p>Page 7</p>	<p><b>ROUGH OPENING - METHOD B: RF100 REINFORCING FABRIC ELEMAX 2600 AIR AND WATER RESISTIVE BARRIER COATING SYSTEM</b></p> <p>THE ABOVE DETAIL IS FOR ILLUSTRATION PURPOSES ONLY. IT IS INTENDED AS A GUIDELINE TO ASSIST MOMENTIVE PRODUCT USERS IN DEVELOPING PROJECT SPECIFIC DETAILS. CONSULT APPROPRIATE SPECIFICATION DOCUMENTS, DATA SHEET, BUILDING CODES AND ANY OTHER INFORMATION DEEMED NECESSARY FOR SPECIFIC REQUIREMENTS. MOMENTIVE PRODUCT USERS ARE RESPONSIBLE FOR DETERMINING THE SUITABILITY OF MOMENTIVE PRODUCTS FOR THE PARTICULAR APPLICATION AND ALL RELATED PROJECT DETAILS. MOMENTIVE MAKES NO WARRANTY, EXPRESS OR IMPLIED, WITH RESPECT TO THE PERFORMANCE SUITABILITY OR FITNESS FOR INTENDED USE OF ITS PRODUCTS IN ANY USER'S APPLICATION. ANY SALE OF PRODUCTS OR DELIVERY OF CUSTOMER SUPPORT AND ADVICE BY MOMENTIVE PERFORMANCE MATERIALS INC. AND/OR ANY OF ITS AFFILIATES. ("MOMENTIVE") IS MADE EXCLUSIVELY UNDER MOMENTIVE'S STANDARD CONDITIONS OF SALE, WHICH ARE AVAILABLE AT SILICONESFORBUILDING.COM. COPYRIGHT 2025 MOMENTIVE PERFORMANCE MATERIALS INC. ALL RIGHTS RESERVED.</p>	



1. Cut minimum 6" (152 mm) Elemax SS Flashing Sheet to appropriate length and shape, adhere in the following order:



- 1A:** Apply Elemax SS Flashing Sheet to the sill area centered over change of plane. Fold the cut segments up inside the corners.
- 1B:** Apply Elemax SS Flashing Sheet to the jamb areas centered over change of plane and overlapping the Elemax SS Flashing Sheet in the bottom corners.
- 1C:** Apply Elemax SS Flashing Sheet to the header centered over change of plane and overlapping the Elemax SS Flashing Sheet in top corners.
- 2.** Apply/tool Elemax 5000 Liquid Flashing to corners/edges to ensure seamless coverage. If a non-silicone sealant is being used to seal window perimeter, ensure Elemax 5000 Liquid Flashing is not applied within a sealant joint path.
- 3.** Ensure Elemax 2600 AWB Coating extends a minimum 2" (50 mm) onto Elemax SS Flashing. Elemax 5000 may also be utilized to seal edge of flashing.

**NOTES:**

- Ensure rough openings are dry, clean and free of dirt, debris and contaminants.
- Elemax SS Flashing should be installed before the application of Elemax 2600 AWB Coating over wall substrate and Elemax 5000 Liquid Flashing at sheathing joint locations.
- Elemax SS Flashing Sheet should be installed in manageable segments. Ensure Elemax SS Flashing Sheet segments overlap by a minimum 2" (50 mm).
- See Elemax 2600 AWB Coating data sheet for list of additional acceptable sealants/liquid flashing.

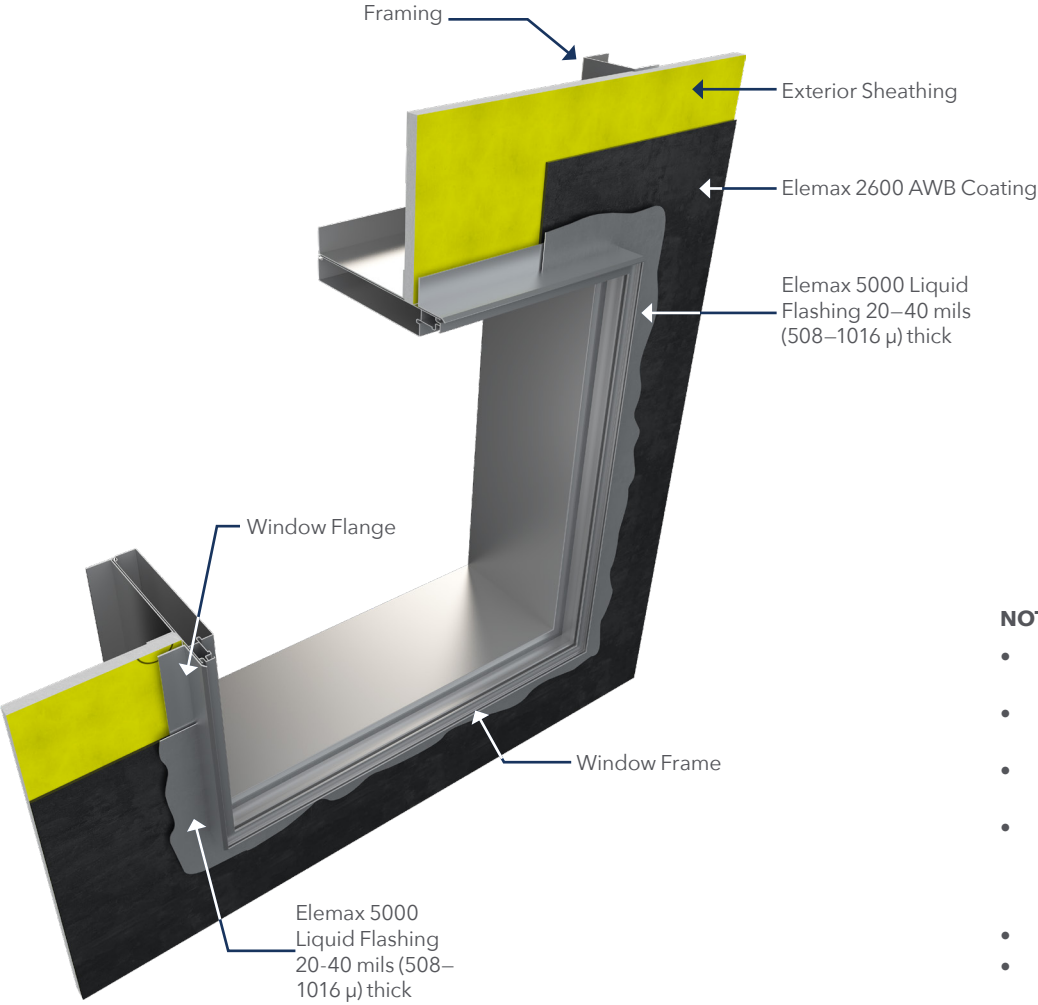
**ROUGH OPENING - METHOD C: ELEMEX SS FLASHING SHEET  
ELEMEX 2600 AIR AND WATER RESISTIVE BARRIER COATING SYSTEM**

**DETAILS #:** AWB - 07

THE ABOVE DETAIL IS FOR ILLUSTRATION PURPOSES ONLY. IT IS INTENDED AS A GUIDELINE TO ASSIST MOMENTIVE PRODUCT USERS IN DEVELOPING PROJECT SPECIFIC DETAILS. CONSULT APPROPRIATE SPECIFICATION DOCUMENTS, DATA SHEET, BUILDING CODES AND ANY OTHER INFORMATION DEEMED NECESSARY FOR SPECIFIC REQUIREMENTS. MOMENTIVE PRODUCT USERS ARE RESPONSIBLE FOR DETERMINING THE SUITABILITY OF MOMENTIVE PRODUCTS FOR THE PARTICULAR APPLICATION AND ALL RELATED PROJECT DETAILS. MOMENTIVE MAKES NO WARRANTY, EXPRESS OR IMPLIED, WITH RESPECT TO THE PERFORMANCE SUITABILITY OR FITNESS FOR INTENDED USE OF ITS PRODUCTS IN ANY USER'S APPLICATION. ANY SALE OF PRODUCTS OR DELIVERY OF CUSTOMER SUPPORT AND ADVICE BY MOMENTIVE PERFORMANCE MATERIALS INC. AND/OR ANY OF ITS AFFILIATES. ("MOMENTIVE") IS MADE EXCLUSIVELY UNDER MOMENTIVE'S STANDARD CONDITIONS OF SALE, WHICH ARE AVAILABLE AT SILICONESFORBUILDING.COM. COPYRIGHT 2025 MOMENTIVE PERFORMANCE MATERIALS INC. ALL RIGHTS RESERVED.

**SCALE:** N.T.S.

**DATE:** 2017 - 03 - 27



**NOTES:**

- Rough opening must properly treated prior to window installation. See detail AWB-05, AWB-06 or AWB-07.
- Ensure Elemax 5000 Liquid Flashing is installed a minimum 2" (50 mm) onto sheathing and tooled smooth at proper thickness.
- It is recommended to check adhesion of products to flange prior to use. SS80 primer can be used if needed.
- RF100 Reinforcing Fabric embedded in Elemax 2600 AWB Coating or UltraSpan UST2200 Silicone Transition Sheet embedded in Elemax 5000 Liquid Flashing may also be utilized to treat window flange.
- Do not block drainage at windowsill.
- See Elemax 2600 AWB Coating data sheet for list of additional acceptable sealants/liquid flashing.

**WINDOW FLANGE TREATMENT  
ELEMEX 2600 AIR AND WATER RESISTIVE BARRIER COATING SYSTEM**

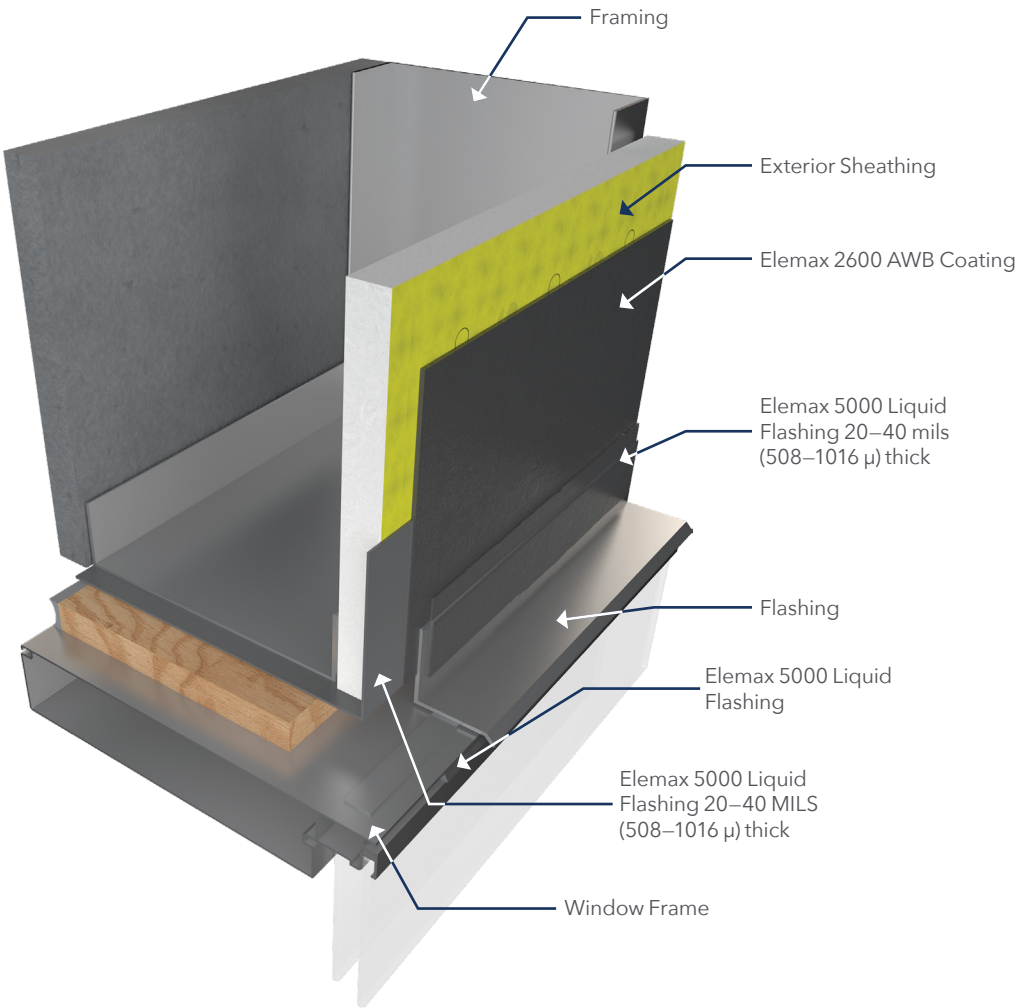
**DETAILS #:** AWB - 08

THE ABOVE DETAIL IS FOR ILLUSTRATION PURPOSES ONLY. IT IS INTENDED AS A GUIDELINE TO ASSIST MOMENTIVE PRODUCT USERS IN DEVELOPING PROJECT SPECIFIC DETAILS. CONSULT APPROPRIATE SPECIFICATION DOCUMENTS, DATA SHEET, BUILDING CODES AND ANY OTHER INFORMATION DEEMED NECESSARY FOR SPECIFIC REQUIREMENTS. MOMENTIVE PRODUCT USERS ARE RESPONSIBLE FOR DETERMINING THE SUITABILITY OF MOMENTIVE PRODUCTS FOR THE PARTICULAR APPLICATION AND ALL RELATED PROJECT DETAILS. MOMENTIVE MAKES NO WARRANTY, EXPRESS OR IMPLIED, WITH RESPECT TO THE PERFORMANCE SUITABILITY OR FITNESS FOR INTENDED USE OF ITS PRODUCTS IN ANY USER'S APPLICATION. ANY SALE OF PRODUCTS OR DELIVERY OF CUSTOMER SUPPORT AND ADVICE BY MOMENTIVE PERFORMANCE MATERIALS INC. AND/OR ANY OF ITS AFFILIATES. ("MOMENTIVE") IS MADE EXCLUSIVELY UNDER MOMENTIVE'S STANDARD CONDITIONS OF SALE, WHICH ARE AVAILABLE AT SILICONESFORBUILDING.COM. COPYRIGHT 2025 MOMENTIVE PERFORMANCE MATERIALS INC. ALL RIGHTS RESERVED.

**SCALE:** N.T.S.

**DATE:** 2017 - 03 - 27





**NOTES:**

- Ensure Elemax 5000 Liquid Flashing is wrapped a minimum 3" (75 mm) into rough opening and onto sheathing. Cut edge of gypsum sheathing may need to be treated with Elemax 2600 AWB Coating prior to application of Elemax 5000 Liquid Flashing.
- Ensure Elemax 5000 Liquid Flashing is installed a minimum 2" (50 mm) onto sheathing at flashing interface.
- Apply Elemax SS Flashing or UltraSpan UST2200 Silicone Transition Sheet set in Elemax 5000 Liquid Flashing over punched stud openings.
- It is recommended to check adhesion of MPM products to steel stud prior to use. SS80 primer can be used if needed.
- RF100 Reinforcing Fabric embedded in Elemax 2600 AWB Coating or Elemax SS Flashing installed prior to Elemax 2600 AWB Coating may also be utilized to wrap opening. Install in accordance with applicable details.
- See detail AWB-05, AWB-06 or AWB-07 for rough opening treatment installation.
- See Elemax 2600 AWB Coating data sheet for list of additional acceptable sealants/liquid flashing.

**WINDOW HEAD  
ELEMEX 2600 AIR AND WATER RESISTIVE BARRIER COATING SYSTEM**

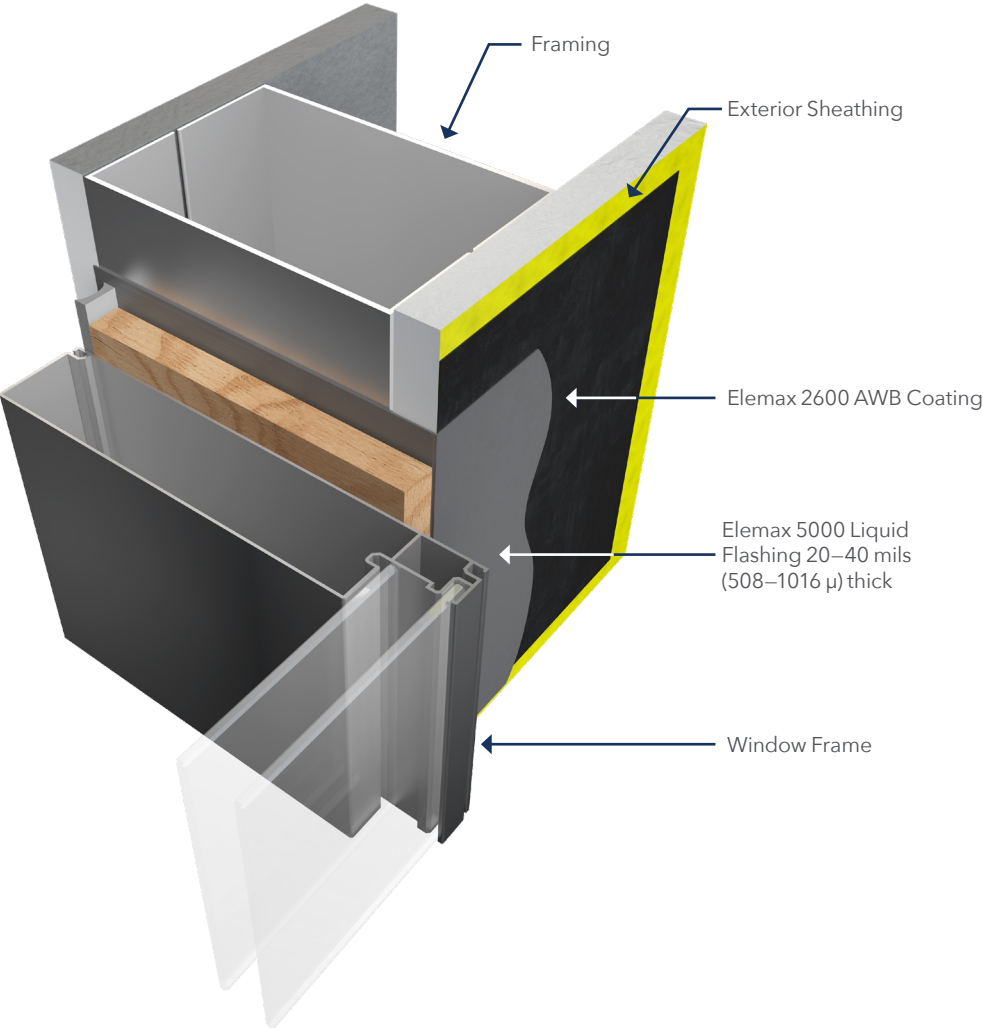
**DETAILS #:** AWB - 09

THE ABOVE DETAIL IS FOR ILLUSTRATION PURPOSES ONLY. IT IS INTENDED AS A GUIDELINE TO ASSIST MOMENTIVE PRODUCT USERS IN DEVELOPING PROJECT SPECIFIC DETAILS. CONSULT APPROPRIATE SPECIFICATION DOCUMENTS, DATA SHEET, BUILDING CODES AND ANY OTHER INFORMATION DEEMED NECESSARY FOR SPECIFIC REQUIREMENTS. MOMENTIVE PRODUCT USERS ARE RESPONSIBLE FOR DETERMINING THE SUITABILITY OF MOMENTIVE PRODUCTS FOR THE PARTICULAR APPLICATION AND ALL RELATED PROJECT DETAILS. MOMENTIVE MAKES NO WARRANTY, EXPRESS OR IMPLIED, WITH RESPECT TO THE PERFORMANCE SUITABILITY OR FITNESS FOR INTENDED USE OF ITS PRODUCTS IN ANY USER'S APPLICATION. ANY SALE OF PRODUCTS OR DELIVERY OF CUSTOMER SUPPORT AND ADVICE BY MOMENTIVE PERFORMANCE MATERIALS INC. AND/OR ANY OF ITS AFFILIATES. ("MOMENTIVE") IS MADE EXCLUSIVELY UNDER MOMENTIVE'S STANDARD CONDITIONS OF SALE, WHICH ARE AVAILABLE AT SILICONESFORBUILDING.COM. COPYRIGHT 2025 MOMENTIVE PERFORMANCE MATERIALS INC. ALL RIGHTS RESERVED.

**SCALE:** N.T.S.

**DATE:** 2017 - 03 - 27

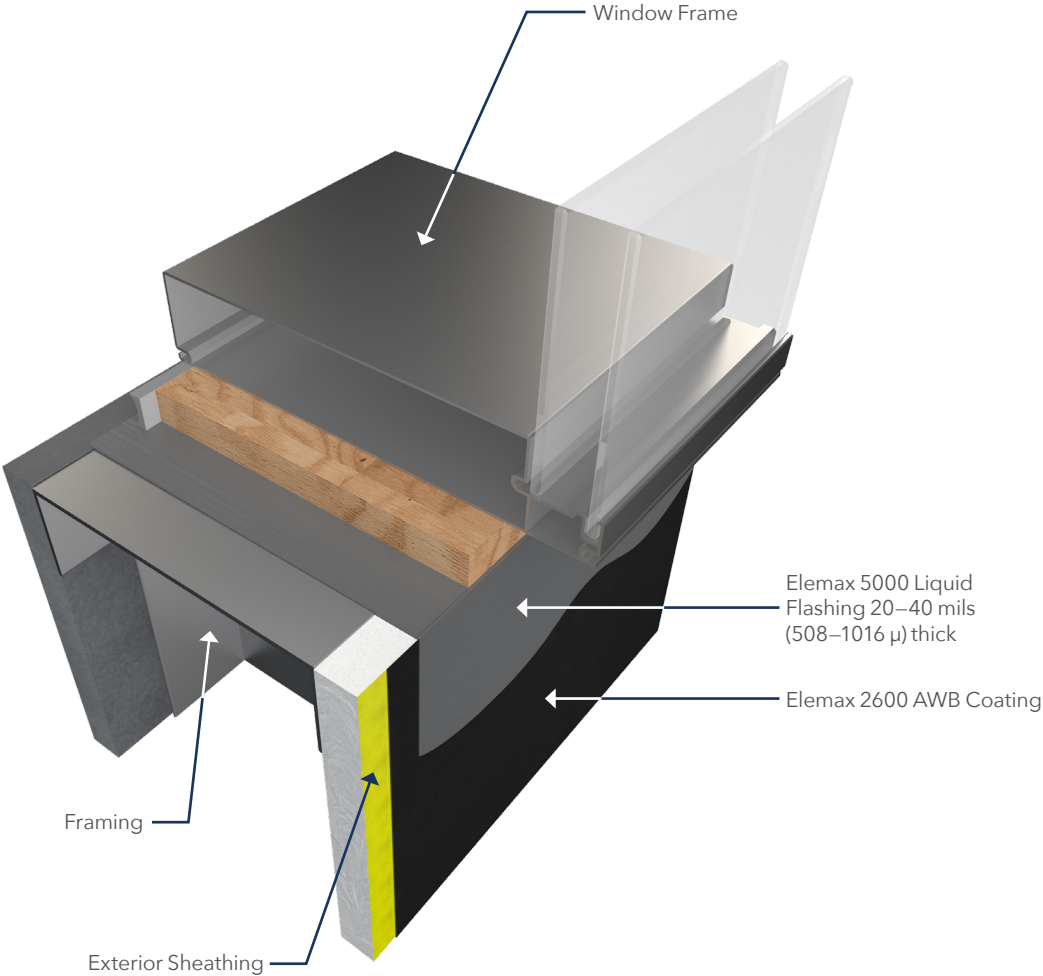




**NOTES:**

- Ensure Elemax 5000 Liquid Flashing is wrapped a minimum 3" (75 mm) into rough opening and onto sheathing. Cut edge of gypsum sheathing may need to be treated with Elemax 2600 AWB Coating prior to application of Elemax 5000 Liquid Flashing.
- Apply Elemax SS Flashing or UltraSpan UST2200 Silicone Transition Sheet set in Elemax 5000 Liquid Flashing over punched stud openings.
- It is recommended to check adhesion of MPM products to steel stud prior to use. SS80 Primer can be used if needed. RF100 Reinforcing Fabric embedded in Elemax 2600 AWB Coating or Elemax SS Flashing installed prior to Elemax 2600 AWB Coating may also be utilized to wrap opening. Install in accordance with applicable details.
- See detail AWB-05, AWB-06 or AWB-07 for rough opening treatment installation.
- See Elemax 2600 AWB data sheet for list of additional acceptable sealants/liquid flashing.

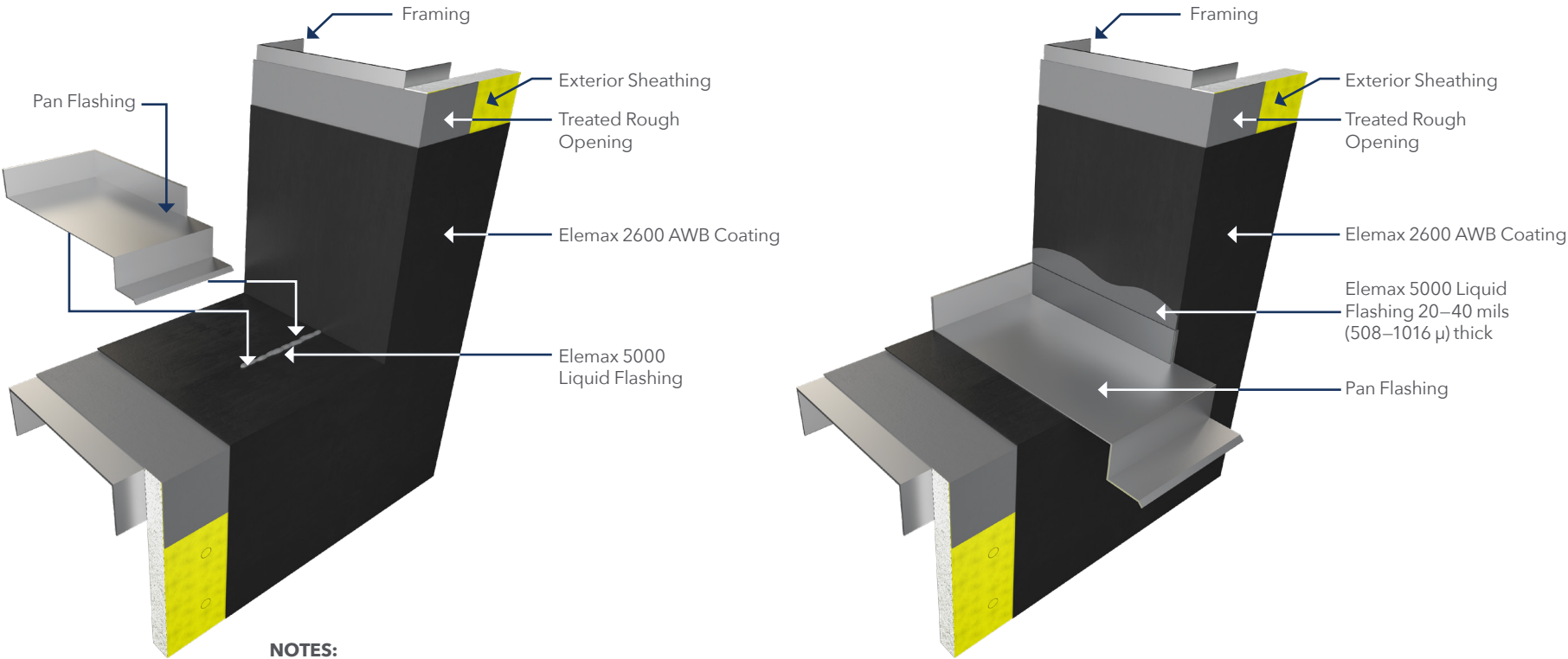
Page 11	<b>WINDOW JAMB ELEMEX 2600 AIR AND WATER-RESISTIVE BARRIER COATING SYSTEM</b>	<b>DETAILS #: AWB - 10</b>
	THE ABOVE DETAIL IS FOR ILLUSTRATION PURPOSES ONLY. IT IS INTENDED AS A GUIDELINE TO ASSIST MOMENTIVE PRODUCT USERS IN DEVELOPING PROJECT SPECIFIC DETAILS. CONSULT APPROPRIATE SPECIFICATION DOCUMENTS, DATA SHEET, BUILDING CODES AND ANY OTHER INFORMATION DEEMED NECESSARY FOR SPECIFIC REQUIREMENTS. MOMENTIVE PRODUCT USERS ARE RESPONSIBLE FOR DETERMINING THE SUITABILITY OF MOMENTIVE PRODUCTS FOR THE PARTICULAR APPLICATION AND ALL RELATED PROJECT DETAILS. MOMENTIVE MAKES NO WARRANTY, EXPRESS OR IMPLIED, WITH RESPECT TO THE PERFORMANCE SUITABILITY OR FITNESS FOR INTENDED USE OF ITS PRODUCTS IN ANY USER'S APPLICATION. ANY SALE OF PRODUCTS OR DELIVERY OF CUSTOMER SUPPORT AND ADVICE BY MOMENTIVE PERFORMANCE MATERIALS INC. AND/OR ANY OF ITS AFFILIATES. ("MOMENTIVE") IS MADE EXCLUSIVELY UNDER MOMENTIVE'S STANDARD CONDITIONS OF SALE, WHICH ARE AVAILABLE AT SILICONESFORBUILDING.COM. COPYRIGHT 2025 MOMENTIVE PERFORMANCE MATERIALS INC. ALL RIGHTS RESERVED.	<b>SCALE: N.T.S.</b>
		<b>DATE: 2017 - 03 - 27</b>



**NOTES:**

- Ensure Elemax 5000 Liquid Flashing is wrapped a minimum 3" (75 mm) into rough opening and onto sheathing. Cut edge of gypsum sheathing may need to be treated with Elemax 2600 AWB Coating prior to application of Elemax 5000 Liquid Flashing.
- Apply Elemax SS Flashing or UltraSpan UST2200 Silicone Transition Sheet set in Elemax 5000 Liquid Flashing over punched stud openings.
- It is recommended to check adhesion of MPM products to steel stud prior to use. SS80 Primer can be used if needed.
- RF100 Reinforcing Fabric embedded in Elemax 2600 AWB Coating or Elemax SS Flashing installed prior to Elemax 2600 AWB Coating may also be utilized to wrap opening. Install in accordance with applicable details.
- See detail AWB-05, AWB-06 or AWB-07 for rough opening treatment installation.
- See Elemax 2600 AWB Coating data sheet for list of additional acceptable sealants/liquid flashing.

Page 12	<b>WINDOW SILL ELEMEX 2600 AIR AND WATER-RESISTIVE BARRIER COATING SYSTEM</b>	<b>DETAILS #: AWB - 11</b>
	THE ABOVE DETAIL IS FOR ILLUSTRATION PURPOSES ONLY. IT IS INTENDED AS A GUIDELINE TO ASSIST MOMENTIVE PRODUCT USERS IN DEVELOPING PROJECT SPECIFIC DETAILS. CONSULT APPROPRIATE SPECIFICATION DOCUMENTS, DATA SHEET, BUILDING CODES AND ANY OTHER INFORMATION DEEMED NECESSARY FOR SPECIFIC REQUIREMENTS. MOMENTIVE PRODUCT USERS ARE RESPONSIBLE FOR DETERMINING THE SUITABILITY OF MOMENTIVE PRODUCTS FOR THE PARTICULAR APPLICATION AND ALL RELATED PROJECT DETAILS. MOMENTIVE MAKES NO WARRANTY, EXPRESS OR IMPLIED, WITH RESPECT TO THE PERFORMANCE SUITABILITY OR FITNESS FOR INTENDED USE OF ITS PRODUCTS IN ANY USER'S APPLICATION. ANY SALE OF PRODUCTS OR DELIVERY OF CUSTOMER SUPPORT AND ADVICE BY MOMENTIVE PERFORMANCE MATERIALS INC. AND/OR ANY OF ITS AFFILIATES. ("MOMENTIVE") IS MADE EXCLUSIVELY UNDER MOMENTIVE'S STANDARD CONDITIONS OF SALE, WHICH ARE AVAILABLE AT SILICONESFORBUILDING.COM. COPYRIGHT 2025 MOMENTIVE PERFORMANCE MATERIALS INC. ALL RIGHTS RESERVED.	<b>SCALE: N.T.S.</b>
		<b>DATE: 2017 - 03 - 27</b>



**NOTES:**

- Rough opening must be properly treated prior to pan flashing installation. See detail AWB-05, AWB-06 OR AWB-07.
- Install Elemax 5000 Liquid Flashing as depicted onto the sill and jamb to ensure continuity of the air barrier.
- Install pan flashing into the wet liquid flashing. Remove excess liquid flashing as required.
- Ensure Elemax 5000 Liquid Flashing is installed a minimum 2" (50 mm) onto pan flashing vertical leg.
- RF100 Reinforcing Fabric embedded in Elemax 2600 AWB Coating or UltraSpan UST2200 silicone transition sheet embedded in Elemax 5000 Liquid Flashing may also be utilized to tie into pan flashing.
- It is recommended to check adhesion of MPM products to pan flashing prior to use. SS80 Primer can be used if needed.
- See Elemax 2600 AWB Coating data sheet for list of additional acceptable sealants/liquid flashing.

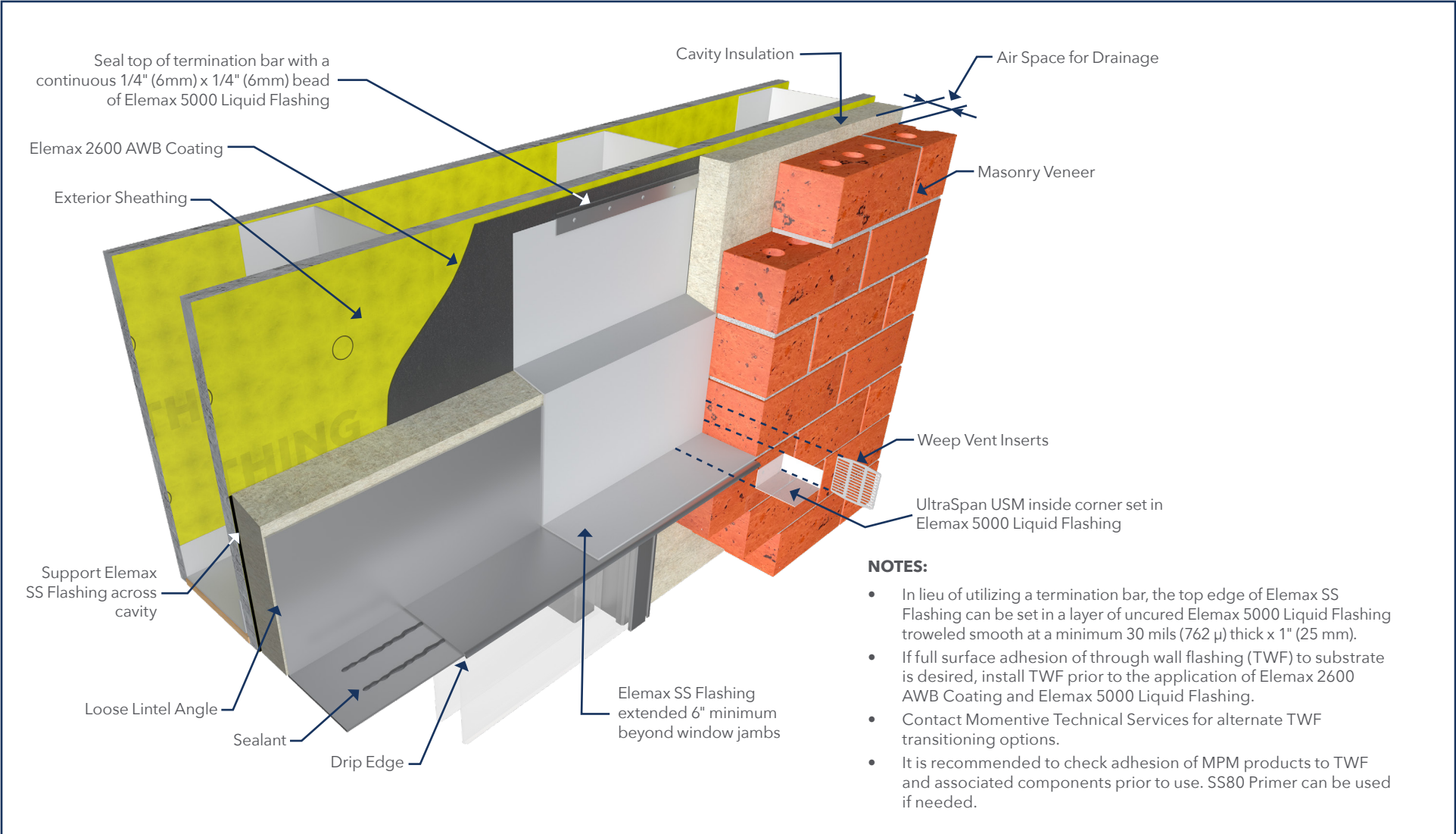
**PAN FLASHING  
ELEMEX 2600 AIR AND WATER RESISTIVE BARRIER COATING SYSTEM**

**DETAILS #:** AWB - 12

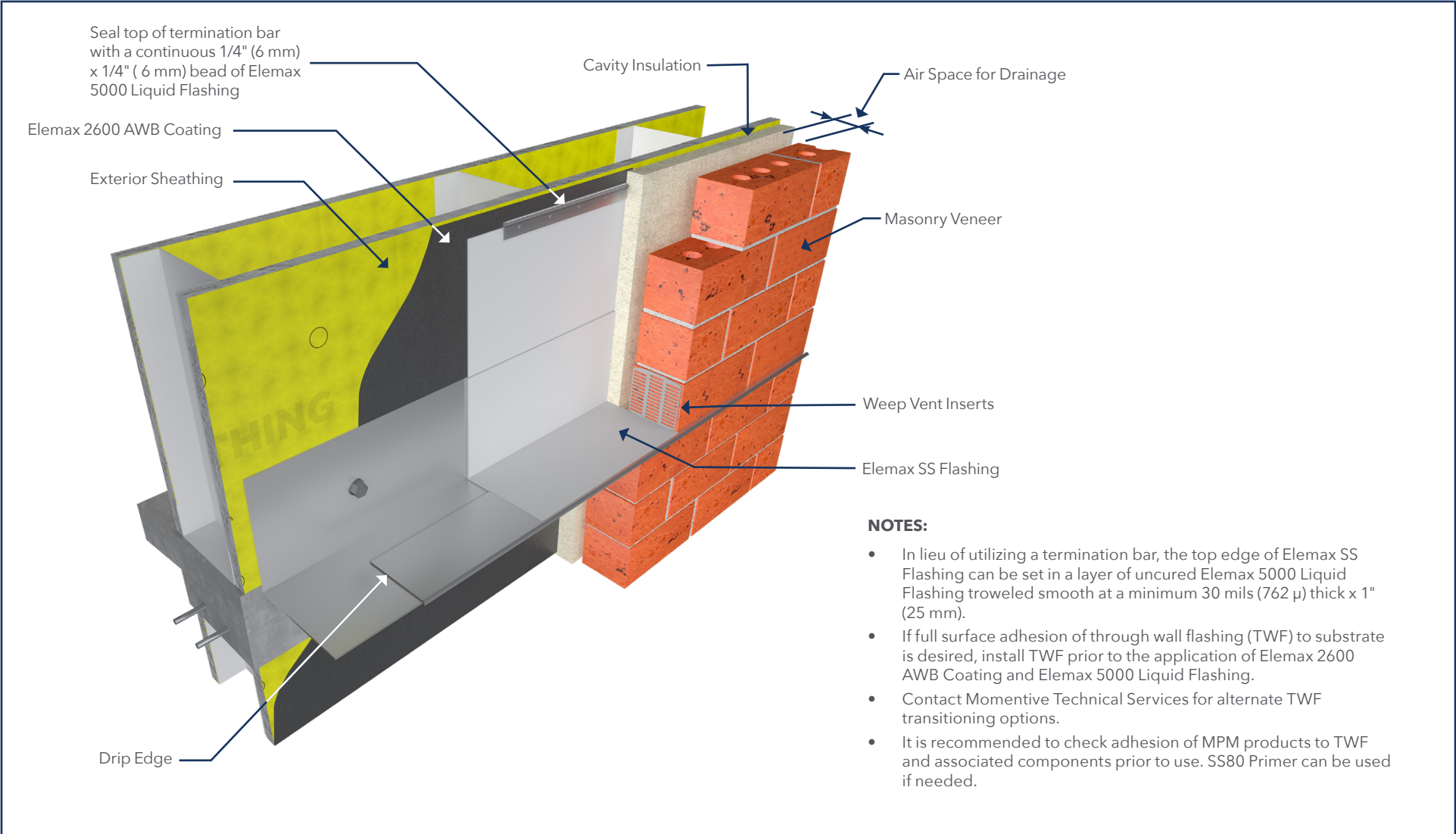
THE ABOVE DETAIL IS FOR ILLUSTRATION PURPOSES ONLY. IT IS INTENDED AS A GUIDELINE TO ASSIST MOMENTIVE PRODUCT USERS IN DEVELOPING PROJECT SPECIFIC DETAILS. CONSULT APPROPRIATE SPECIFICATION DOCUMENTS, DATA SHEET, BUILDING CODES AND ANY OTHER INFORMATION DEEMED NECESSARY FOR SPECIFIC REQUIREMENTS. MOMENTIVE PRODUCT USERS ARE RESPONSIBLE FOR DETERMINING THE SUITABILITY OF MOMENTIVE PRODUCTS FOR THE PARTICULAR APPLICATION AND ALL RELATED PROJECT DETAILS. MOMENTIVE MAKES NO WARRANTY, EXPRESS OR IMPLIED, WITH RESPECT TO THE PERFORMANCE SUITABILITY OR FITNESS FOR INTENDED USE OF ITS PRODUCTS IN ANY USER'S APPLICATION. ANY SALE OF PRODUCTS OR DELIVERY OF CUSTOMER SUPPORT AND ADVICE BY MOMENTIVE PERFORMANCE MATERIALS INC. AND/OR ANY OF ITS AFFILIATES. ("MOMENTIVE") IS MADE EXCLUSIVELY UNDER MOMENTIVE'S STANDARD CONDITIONS OF SALE, WHICH ARE AVAILABLE AT SILICONESFORBUILDING.COM. COPYRIGHT 2025 MOMENTIVE PERFORMANCE MATERIALS INC. ALL RIGHTS RESERVED.

**SCALE:** N.T.S.

**DATE:** 2017 - 03 - 27

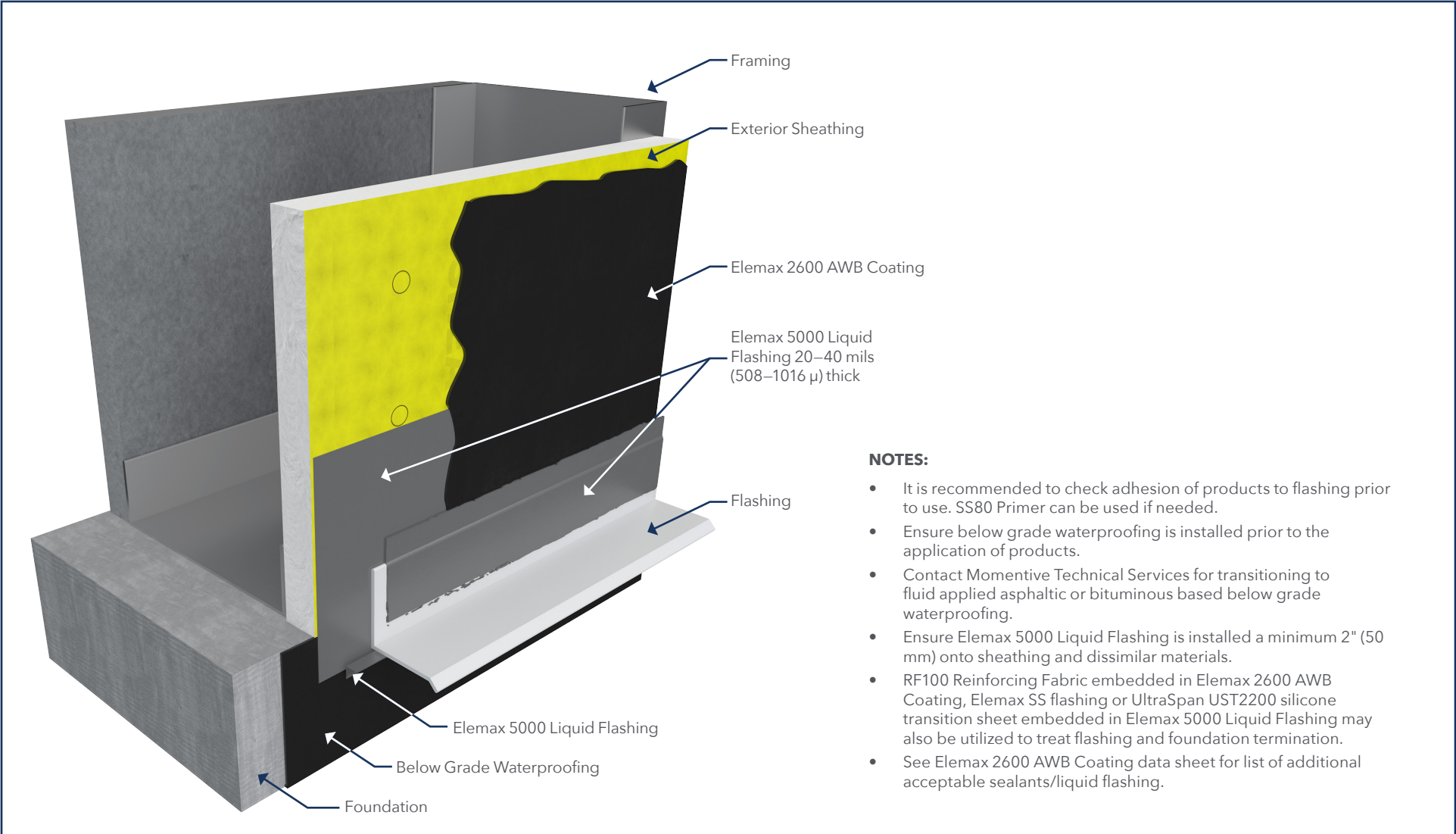


Page 14	WINDOW HEAD - THROUGH WALL FLASHING ELEMEX 2600 AIR AND WATER-RESISTIVE BARRIER COATING SYSTEM	DETAILS #: AWB - 13
	THE ABOVE DETAIL IS FOR ILLUSTRATION PURPOSES ONLY. IT IS INTENDED AS A GUIDELINE TO ASSIST MOMENTIVE PRODUCT USERS IN DEVELOPING PROJECT SPECIFIC DETAILS. CONSULT APPROPRIATE SPECIFICATION DOCUMENTS, DATA SHEET, BUILDING CODES AND ANY OTHER INFORMATION DEEMED NECESSARY FOR SPECIFIC REQUIREMENTS. MOMENTIVE PRODUCT USERS ARE RESPONSIBLE FOR DETERMINING THE SUITABILITY OF MOMENTIVE PRODUCTS FOR THE PARTICULAR APPLICATION AND ALL RELATED PROJECT DETAILS. MOMENTIVE MAKES NO WARRANTY, EXPRESS OR IMPLIED, WITH RESPECT TO THE PERFORMANCE SUITABILITY OR FITNESS FOR INTENDED USE OF ITS PRODUCTS IN ANY USER'S APPLICATION. ANY SALE OF PRODUCTS OR DELIVERY OF CUSTOMER SUPPORT AND ADVICE BY MOMENTIVE PERFORMANCE MATERIALS INC. AND/OR ANY OF ITS AFFILIATES. ("MOMENTIVE") IS MADE EXCLUSIVELY UNDER MOMENTIVE'S STANDARD CONDITIONS OF SALE, WHICH ARE AVAILABLE AT SILICONESFORBUILDING.COM. COPYRIGHT 2025 MOMENTIVE PERFORMANCE MATERIALS INC. ALL RIGHTS RESERVED.	SCALE: N.T.S.
		DATE: 2017 - 03 - 27



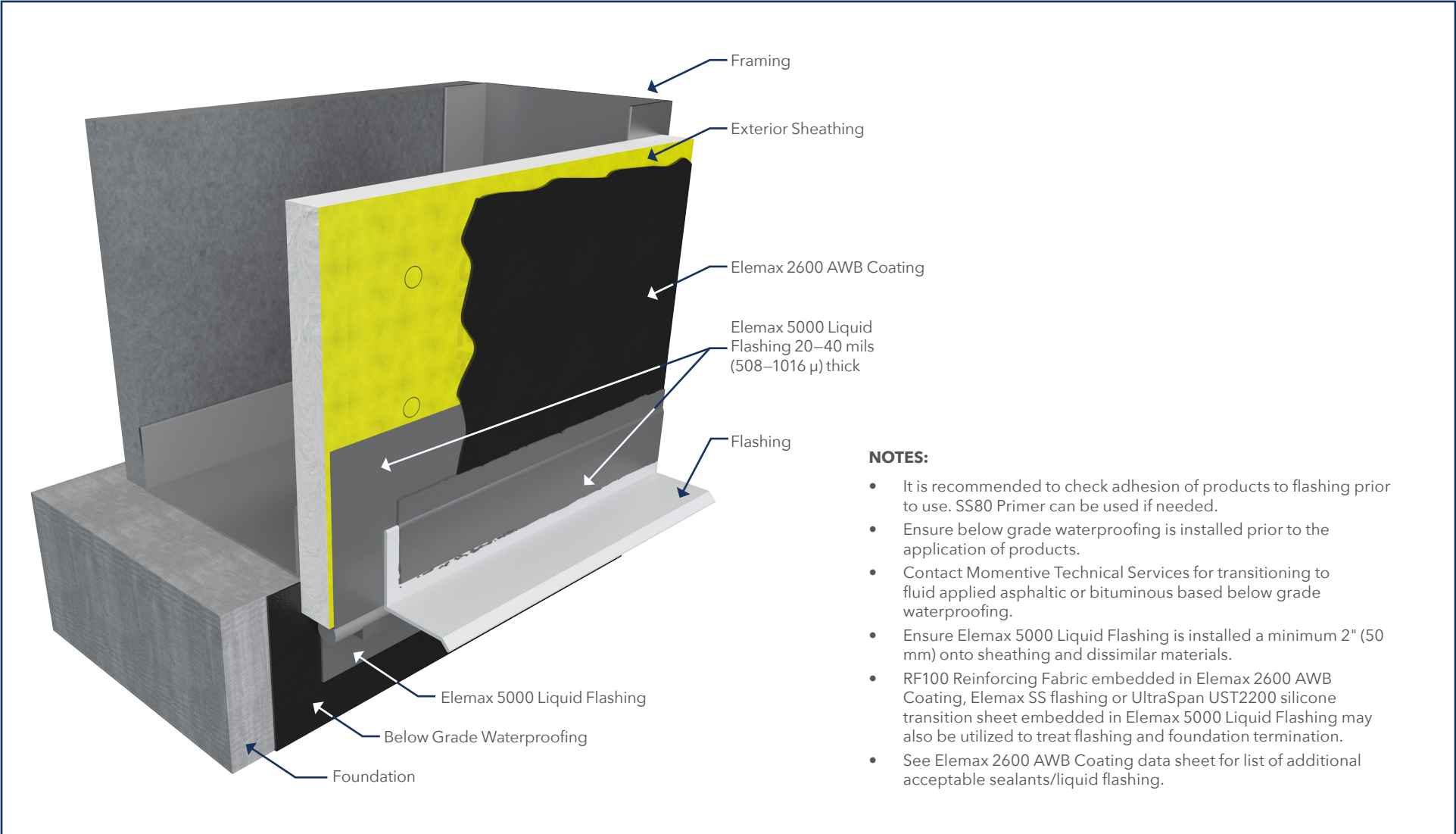
Page 15	<b>SHELF ANGLE ELEMEX 2600 AIR AND WATER-RESISTIVE BARRIER COATING SYSTEM</b>	<b>DETAILS #: AWB - 14</b>
	THE ABOVE DETAIL IS FOR ILLUSTRATION PURPOSES ONLY. IT IS INTENDED AS A GUIDELINE TO ASSIST MOMENTIVE PRODUCT USERS IN DEVELOPING PROJECT SPECIFIC DETAILS. CONSULT APPROPRIATE SPECIFICATION DOCUMENTS, DATA SHEET, BUILDING CODES AND ANY OTHER INFORMATION DEEMED NECESSARY FOR SPECIFIC REQUIREMENTS. MOMENTIVE PRODUCT USERS ARE RESPONSIBLE FOR DETERMINING THE SUITABILITY OF MOMENTIVE PRODUCTS FOR THE PARTICULAR APPLICATION AND ALL RELATED PROJECT DETAILS. MOMENTIVE MAKES NO WARRANTY, EXPRESS OR IMPLIED, WITH RESPECT TO THE PERFORMANCE SUITABILITY OR FITNESS FOR INTENDED USE OF ITS PRODUCTS IN ANY USER'S APPLICATION. ANY SALE OF PRODUCTS OR DELIVERY OF CUSTOMER SUPPORT AND ADVICE BY MOMENTIVE PERFORMANCE MATERIALS INC. AND/OR ANY OF ITS AFFILIATES. ("MOMENTIVE") IS MADE EXCLUSIVELY UNDER MOMENTIVE'S STANDARD CONDITIONS OF SALE, WHICH ARE AVAILABLE AT SILICONESFORBUILDING.COM. COPYRIGHT 2025 MOMENTIVE PERFORMANCE MATERIALS INC. ALL RIGHTS RESERVED.	<b>SCALE: N.T.S.</b>
		<b>DATE: 2017 - 03 - 17</b>



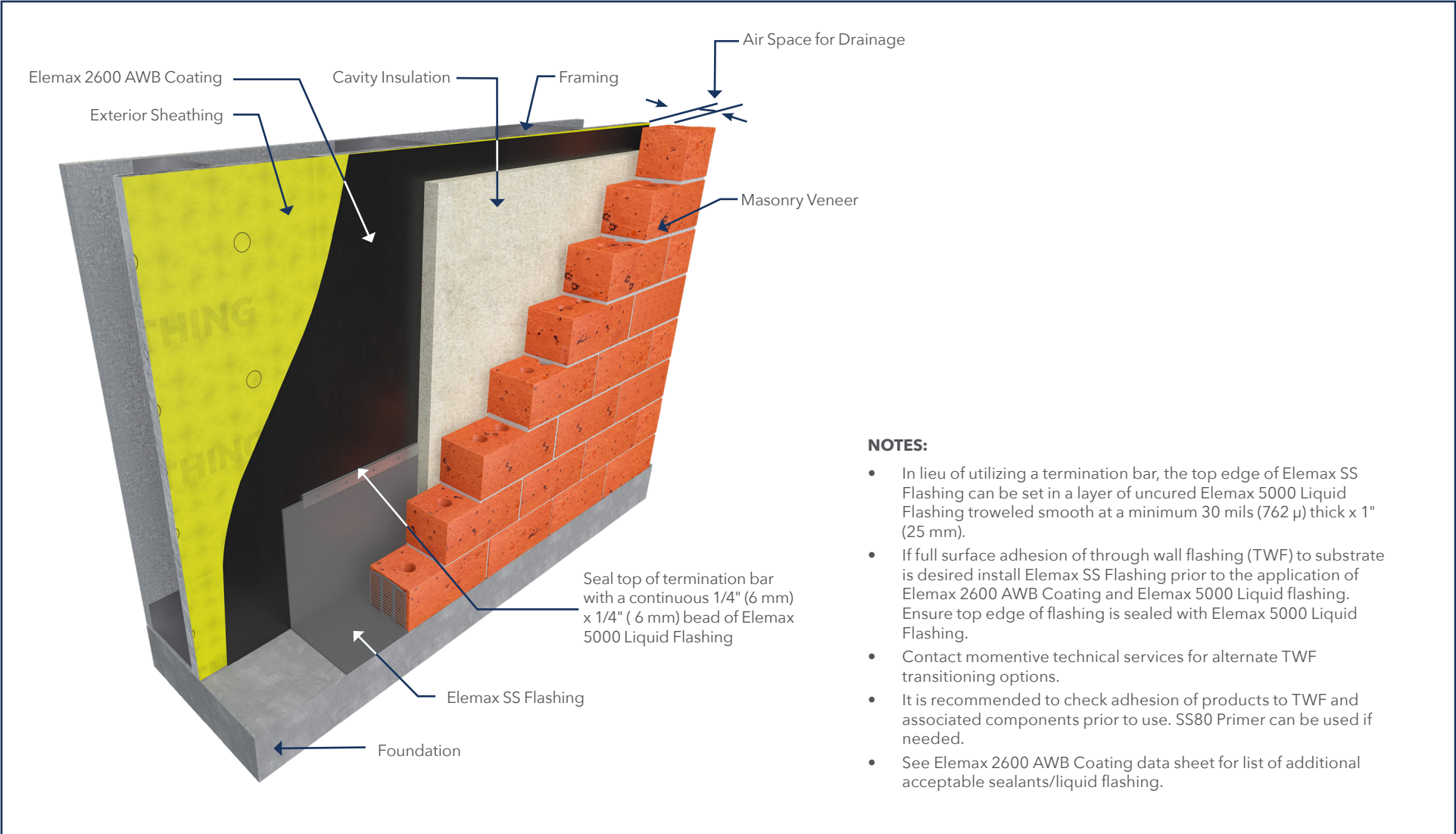


Page 16	TERMINATION AT GRADE – FLUSH WITH FOUNDATION ELEMEX 2600 AIR AND WATER RESISTIVE BARRIER COATING SYSTEM	DETAILS #: AWB - 15
	THE ABOVE DETAIL IS FOR ILLUSTRATION PURPOSES ONLY. IT IS INTENDED AS A GUIDELINE TO ASSIST MOMENTIVE PRODUCT USERS IN DEVELOPING PROJECT SPECIFIC DETAILS. CONSULT APPROPRIATE SPECIFICATION DOCUMENTS, DATA SHEET, BUILDING CODES AND ANY OTHER INFORMATION DEEMED NECESSARY FOR SPECIFIC REQUIREMENTS. MOMENTIVE PRODUCT USERS ARE RESPONSIBLE FOR DETERMINING THE SUITABILITY OF MOMENTIVE PRODUCTS FOR THE PARTICULAR APPLICATION AND ALL RELATED PROJECT DETAILS. MOMENTIVE MAKES NO WARRANTY, EXPRESS OR IMPLIED, WITH RESPECT TO THE PERFORMANCE SUITABILITY OR FITNESS FOR INTENDED USE OF ITS PRODUCTS IN ANY USER'S APPLICATION. ANY SALE OF PRODUCTS OR DELIVERY OF CUSTOMER SUPPORT AND ADVICE BY MOMENTIVE PERFORMANCE MATERIALS INC. AND/OR ANY OF ITS AFFILIATES. ("MOMENTIVE") IS MADE EXCLUSIVELY UNDER MOMENTIVE'S STANDARD CONDITIONS OF SALE, WHICH ARE AVAILABLE AT SILICONESFORBUILDING.COM. COPYRIGHT 2025 MOMENTIVE PERFORMANCE MATERIALS INC. ALL RIGHTS RESERVED.	SCALE: N.T.S.
		DATE: 2017 - 03 - 27

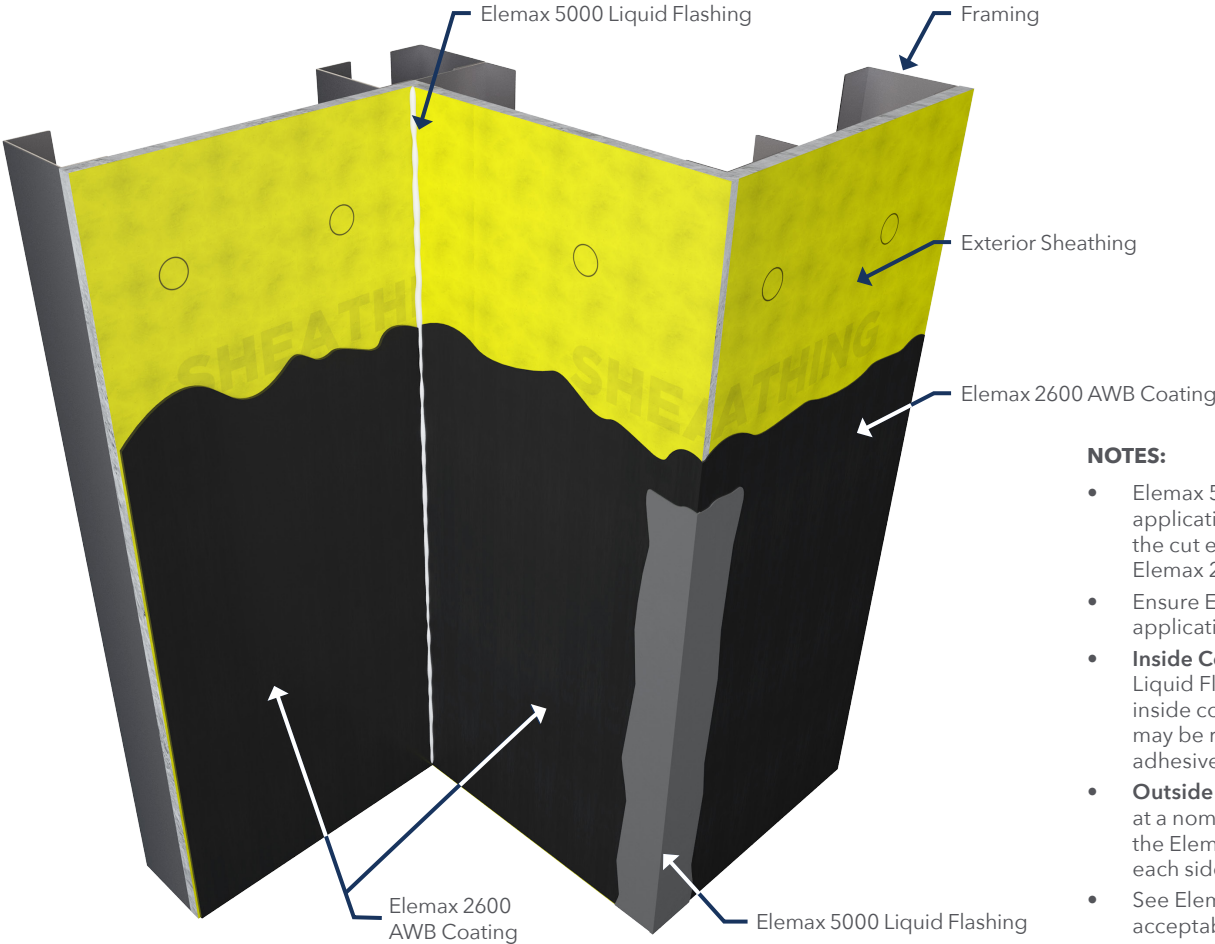




Page 17	TERMINATION AT GRADE – SHEATHING OVERLAPPING FOUNDATION ELEMEX 2600 AIR AND WATER RESISTIVE BARRIER COATING SYSTEM	DETAILS #: AWB - 16
	THE ABOVE DETAIL IS FOR ILLUSTRATION PURPOSES ONLY. IT IS INTENDED AS A GUIDELINE TO ASSIST MOMENTIVE PRODUCT USERS IN DEVELOPING PROJECT SPECIFIC DETAILS. CONSULT APPROPRIATE SPECIFICATION DOCUMENTS, DATA SHEET, BUILDING CODES AND ANY OTHER INFORMATION DEEMED NECESSARY FOR SPECIFIC REQUIREMENTS. MOMENTIVE PRODUCT USERS ARE RESPONSIBLE FOR DETERMINING THE SUITABILITY OF MOMENTIVE PRODUCTS FOR THE PARTICULAR APPLICATION AND ALL RELATED PROJECT DETAILS. MOMENTIVE MAKES NO WARRANTY, EXPRESS OR IMPLIED, WITH RESPECT TO THE PERFORMANCE SUITABILITY OR FITNESS FOR INTENDED USE OF ITS PRODUCTS IN ANY USER'S APPLICATION. ANY SALE OF PRODUCTS OR DELIVERY OF CUSTOMER SUPPORT AND ADVICE BY MOMENTIVE PERFORMANCE MATERIALS INC. AND/OR ANY OF ITS AFFILIATES. ("MOMENTIVE") IS MADE EXCLUSIVELY UNDER MOMENTIVE'S STANDARD CONDITIONS OF SALE, WHICH ARE AVAILABLE AT SILICONESFORBUILDING.COM. COPYRIGHT 2025 MOMENTIVE PERFORMANCE MATERIALS INC. ALL RIGHTS RESERVED.	SCALE: N.T.S.
		DATE: 2017 - 03 - 27



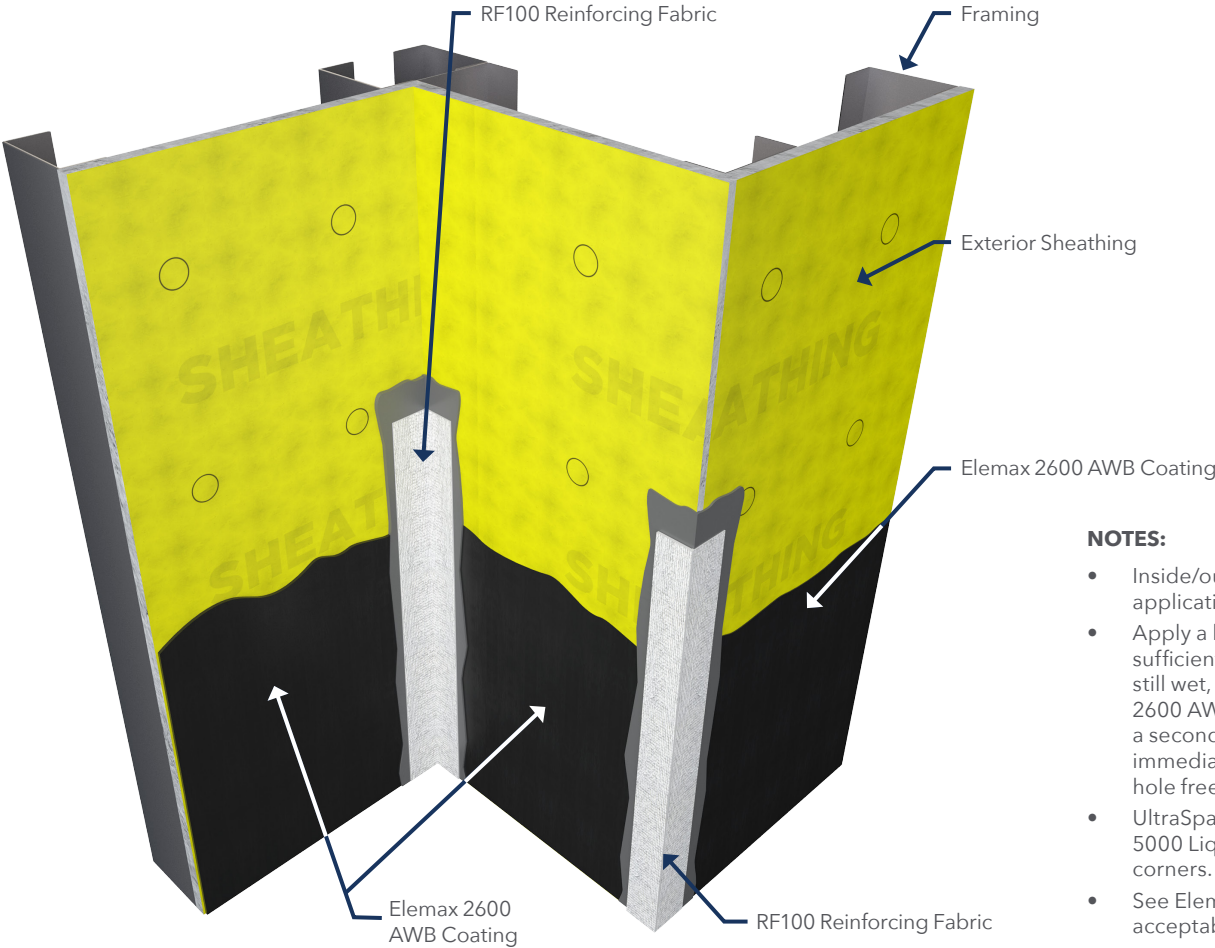
Page 18	TERMINATION AT FOUNDATION - THROUGH WALL FLASHING AT BASE ELEMAX 2600 AIR AND WATER RESISTIVE BARRIER COATING SYSTEM	DETAILS #: AWB - 17
	THE ABOVE DETAIL IS FOR ILLUSTRATION PURPOSES ONLY. IT IS INTENDED AS A GUIDELINE TO ASSIST MOMENTIVE PRODUCT USERS IN DEVELOPING PROJECT SPECIFIC DETAILS. CONSULT APPROPRIATE SPECIFICATION DOCUMENTS, DATA SHEET, BUILDING CODES AND ANY OTHER INFORMATION DEEMED NECESSARY FOR SPECIFIC REQUIREMENTS. MOMENTIVE PRODUCT USERS ARE RESPONSIBLE FOR DETERMINING THE SUITABILITY OF MOMENTIVE PRODUCTS FOR THE PARTICULAR APPLICATION AND ALL RELATED PROJECT DETAILS. MOMENTIVE MAKES NO WARRANTY, EXPRESS OR IMPLIED, WITH RESPECT TO THE PERFORMANCE SUITABILITY OR FITNESS FOR INTENDED USE OF ITS PRODUCTS IN ANY USER'S APPLICATION. ANY SALE OF PRODUCTS OR DELIVERY OF CUSTOMER SUPPORT AND ADVICE BY MOMENTIVE PERFORMANCE MATERIALS INC. AND/OR ANY OF ITS AFFILIATES. ("MOMENTIVE") IS MADE EXCLUSIVELY UNDER MOMENTIVE'S STANDARD CONDITIONS OF SALE, WHICH ARE AVAILABLE AT SILICONESFORBUILDING.COM. COPYRIGHT 2025 MOMENTIVE PERFORMANCE MATERIALS INC. ALL RIGHTS RESERVED.	SCALE: N.T.S.
		DATE: 2017 - 03 - 27



**NOTES:**

- Elemax 5000 Liquid Flashing may be installed before or after the application of Elemax 2600 AWB Coating. When installing before, the cut edges of gypsum sheathing may need to be coated with Elemax 2600 AWB Coating.
- Ensure Elemax 2600 AWB Coating is dry to the touch prior to the application of Elemax 5000 Liquid Flashing.
- **Inside Corner:** a properly configured fillet bead of Elemax 5000 Liquid Flashing may be utilized to treat change in substrate at inside corners with gaps < 1/2" (13 mm). The use of backer rod may be required. Ensure a minimum 1/4" (6 mm) – 3/8" (10 mm) adhesive contact to both sides.
- **Outside Corner:** apply Elemax 5000 Liquid Flashing to the corner at a nominal 20–40 mils (508–1016 μ) thickness. Spread/trowel the Elemax 5000 Liquid Flashing to a minimum of 3" (75 mm) onto each side wall.
- See Elemax 2600 AWB Coating data sheet for list of additional acceptable sealants/liquid flashing.

Page 19	INSIDE / OUTSIDE CORNERS - METHOD A: ELEMEX 5000 LIQUID FLASHING ELEMEX 2600 AIR AND WATER RESISTIVE BARRIER COATING SYSTEM	DETAILS #: AWB - 18
	THE ABOVE DETAIL IS FOR ILLUSTRATION PURPOSES ONLY. IT IS INTENDED AS A GUIDELINE TO ASSIST MOMENTIVE PRODUCT USERS IN DEVELOPING PROJECT SPECIFIC DETAILS. CONSULT APPROPRIATE SPECIFICATION DOCUMENTS, DATA SHEET, BUILDING CODES AND ANY OTHER INFORMATION DEEMED NECESSARY FOR SPECIFIC REQUIREMENTS. MOMENTIVE PRODUCT USERS ARE RESPONSIBLE FOR DETERMINING THE SUITABILITY OF MOMENTIVE PRODUCTS FOR THE PARTICULAR APPLICATION AND ALL RELATED PROJECT DETAILS. MOMENTIVE MAKES NO WARRANTY, EXPRESS OR IMPLIED, WITH RESPECT TO THE PERFORMANCE SUITABILITY OR FITNESS FOR INTENDED USE OF ITS PRODUCTS IN ANY USER'S APPLICATION. ANY SALE OF PRODUCTS OR DELIVERY OF CUSTOMER SUPPORT AND ADVICE BY MOMENTIVE PERFORMANCE MATERIALS INC. AND/OR ANY OF ITS AFFILIATES. ("MOMENTIVE") IS MADE EXCLUSIVELY UNDER MOMENTIVE'S STANDARD CONDITIONS OF SALE, WHICH ARE AVAILABLE AT SILICONESFORBUILDING.COM. COPYRIGHT 2025 MOMENTIVE PERFORMANCE MATERIALS INC. ALL RIGHTS RESERVED.	SCALE: N.T.S.
		DATE: 2017 - 03 - 27



**NOTES:**

- Inside/outside corners may be detailed before or after the application of Elemax 2600 AWB Coating.
- Apply a liberal coat (min. 10 mil) of Elemax 2600 AWB Coating in sufficient width to accommodate RF100 Reinforcing Fabric. While still wet, set 6" (150 mm) RF100 Reinforcing Fabric into the Elemax 2600 AWB Coating and center on inside/outside corner. Apply a second coat (min. 10 mil [254 µ]) of Elemax 2600 AWB Coating immediately over the RF100 Reinforcing Fabric ensuring a pin hole free application is achieved.
- UltraSpan UST2200 silicone transition sheet embedded in Elemax 5000 Liquid Flashing may also be utilized to treat inside/outside corners.
- See Elemax 2600 AWB Coating data sheet for list of additional acceptable sealants/liquid flashing.

**INSIDE / OUTSIDE CORNERS - METHOD B: RF100 REINFORCING FABRIC  
ELEMEX 2600 AIR AND WATER RESISTIVE BARRIER COATING SYSTEM**

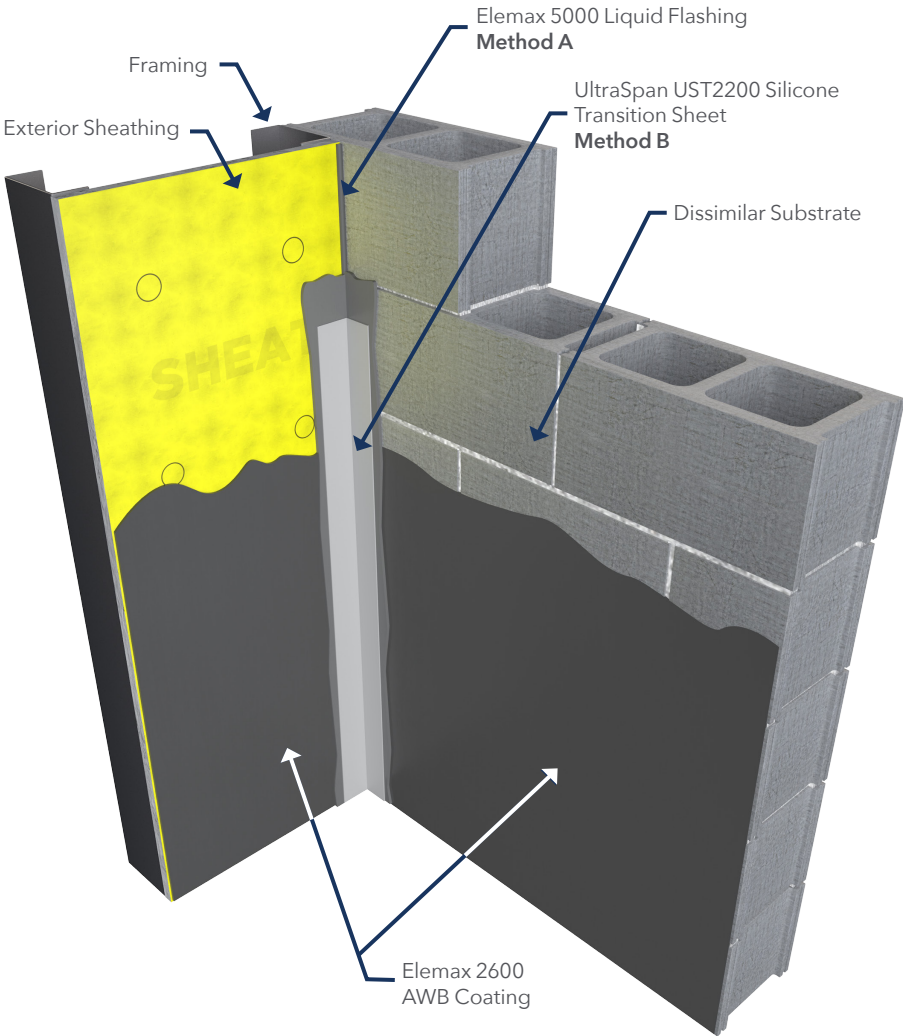
**DETAILS #:** AWB - 19

THE ABOVE DETAIL IS FOR ILLUSTRATION PURPOSES ONLY. IT IS INTENDED AS A GUIDELINE TO ASSIST MOMENTIVE PRODUCT USERS IN DEVELOPING PROJECT SPECIFIC DETAILS. CONSULT APPROPRIATE SPECIFICATION DOCUMENTS, DATA SHEET, BUILDING CODES AND ANY OTHER INFORMATION DEEMED NECESSARY FOR SPECIFIC REQUIREMENTS. MOMENTIVE PRODUCT USERS ARE RESPONSIBLE FOR DETERMINING THE SUITABILITY OF MOMENTIVE PRODUCTS FOR THE PARTICULAR APPLICATION AND ALL RELATED PROJECT DETAILS. MOMENTIVE MAKES NO WARRANTY, EXPRESS OR IMPLIED, WITH RESPECT TO THE PERFORMANCE SUITABILITY OR FITNESS FOR INTENDED USE OF ITS PRODUCTS IN ANY USER'S APPLICATION. ANY SALE OF PRODUCTS OR DELIVERY OF CUSTOMER SUPPORT AND ADVICE BY MOMENTIVE PERFORMANCE MATERIALS INC. AND/OR ANY OF ITS AFFILIATES. ("MOMENTIVE") IS MADE EXCLUSIVELY UNDER MOMENTIVE'S STANDARD CONDITIONS OF SALE, WHICH ARE AVAILABLE AT SILICONESFORBUILDING.COM. COPYRIGHT 2025 MOMENTIVE PERFORMANCE MATERIALS INC. ALL RIGHTS RESERVED.

**SCALE:** N.T.S.

**DATE:** 2017 - 03 - 27





**NOTES:**

- Change in substrate may be detailed before or after the application of Elemax 2600 AWB Coating.
- **Method A:** a properly configured fillet bead of Elemax 5000 Liquid Flashing may be utilized to treat change in substrate at inside corners with gaps < 1/2" (13 mm). The use of backer rod may be required. Ensure a minimum 1/4" (6 mm)–3/8" (10 mm) adhesive contact to both sides.
- **Method B:** adhere 6" (150 mm) wide UltraSpan UST2200 silicone transition sheet at inside corner utilizing Elemax 5000 Liquid Flashing as an adhesive and centering over the change in substrate. Edges of UltraSpan UST2200 silicone transition sheet must be fully embedded in Elemax 5000 Liquid Flashing ensuring a watertight seal is achieved.
- See Elemax 2600 AWB Coating data sheet for list of additional acceptable sealants/liquid flashing.

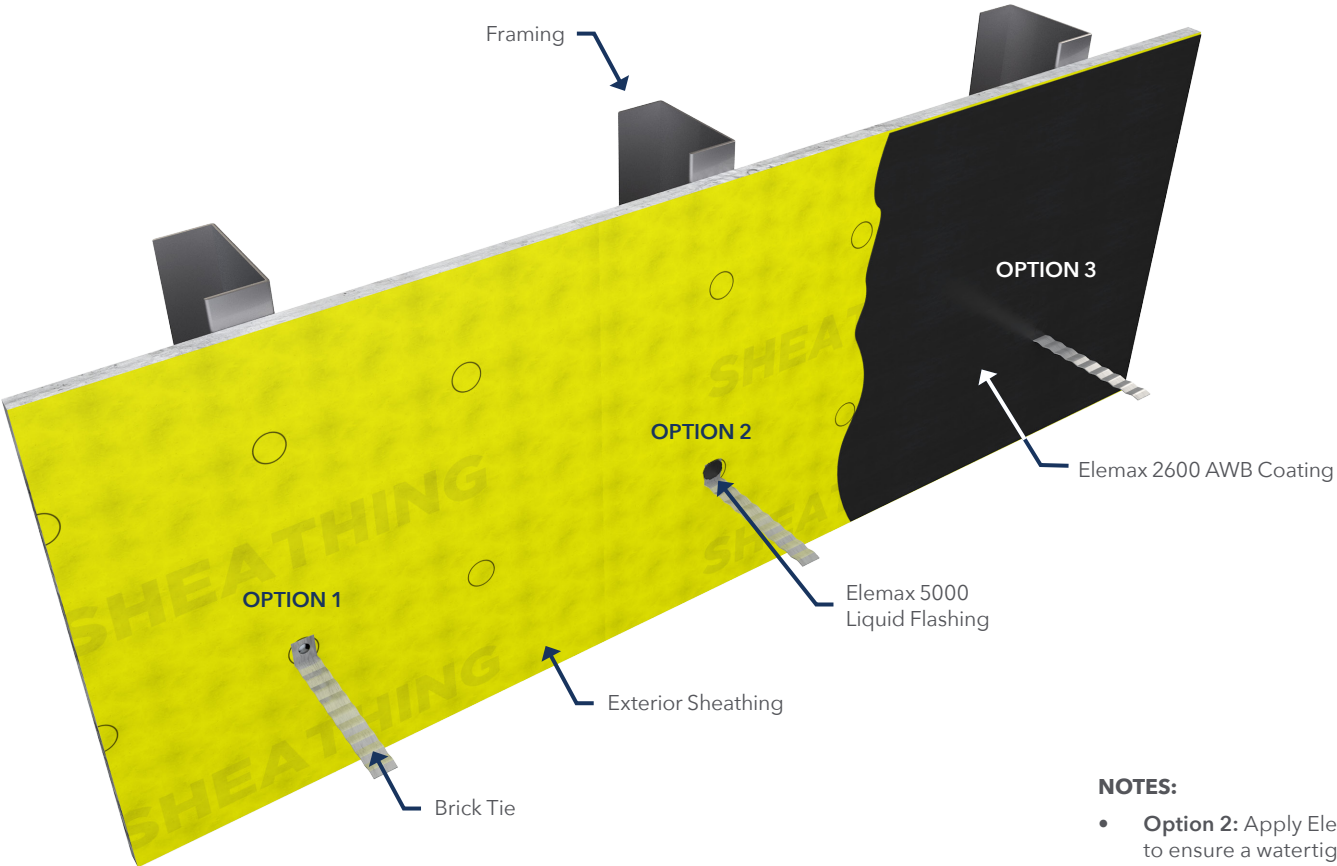
**CHANGE IN SUBSTRATE  
ELEMEX 2600 AIR AND WATER RESISTIVE BARRIER COATING SYSTEM**

**DETAILS #:** AWB - 20

THE ABOVE DETAIL IS FOR ILLUSTRATION PURPOSES ONLY. IT IS INTENDED AS A GUIDELINE TO ASSIST MOMENTIVE PRODUCT USERS IN DEVELOPING PROJECT SPECIFIC DETAILS. CONSULT APPROPRIATE SPECIFICATION DOCUMENTS, DATA SHEET, BUILDING CODES AND ANY OTHER INFORMATION DEEMED NECESSARY FOR SPECIFIC REQUIREMENTS. MOMENTIVE PRODUCT USERS ARE RESPONSIBLE FOR DETERMINING THE SUITABILITY OF MOMENTIVE PRODUCTS FOR THE PARTICULAR APPLICATION AND ALL RELATED PROJECT DETAILS. MOMENTIVE MAKES NO WARRANTY, EXPRESS OR IMPLIED, WITH RESPECT TO THE PERFORMANCE SUITABILITY OR FITNESS FOR INTENDED USE OF ITS PRODUCTS IN ANY USER'S APPLICATION. ANY SALE OF PRODUCTS OR DELIVERY OF CUSTOMER SUPPORT AND ADVICE BY MOMENTIVE PERFORMANCE MATERIALS INC. AND/OR ANY OF ITS AFFILIATES. ("MOMENTIVE") IS MADE EXCLUSIVELY UNDER MOMENTIVE'S STANDARD CONDITIONS OF SALE, WHICH ARE AVAILABLE AT SILICONESFORBUILDING.COM. COPYRIGHT 2025 MOMENTIVE PERFORMANCE MATERIALS INC. ALL RIGHTS RESERVED.

**SCALE:** N.T.S.

**DATE:** 2017 - 03 - 27

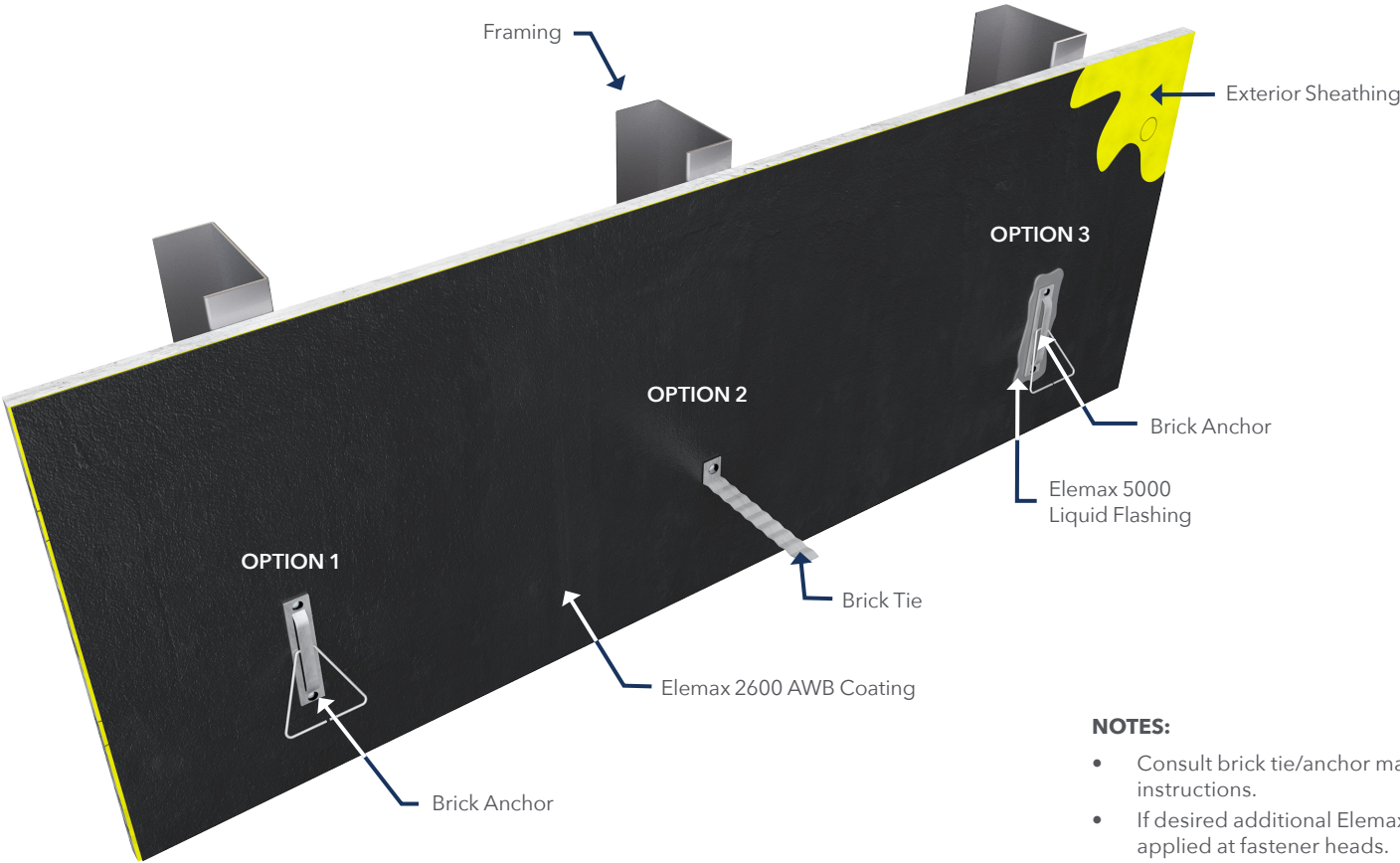


**NOTES:**

- **Option 2:** Apply Elemax 5000 Liquid Flashing over fastener head to ensure a watertight seal is achieved.
- Consult brick tie/anchor manufacturer for proper installation instructions.
- See Elemax 2600 AWB Coating data sheet for list of additional acceptable sealants/liquid flashing.

Page 22	BRICK TIE / ANCHOR INSTALLED PRIOR TO ELEMEX 2600 AWB COATING ELEMEX 2600 AIR AND WATER RESISTIVE BARRIER COATING SYSTEM	DETAILS #: AWB - 21
	THE ABOVE DETAIL IS FOR ILLUSTRATION PURPOSES ONLY. IT IS INTENDED AS A GUIDELINE TO ASSIST MOMENTIVE PRODUCT USERS IN DEVELOPING PROJECT SPECIFIC DETAILS. CONSULT APPROPRIATE SPECIFICATION DOCUMENTS, DATA SHEET, BUILDING CODES AND ANY OTHER INFORMATION DEEMED NECESSARY FOR SPECIFIC REQUIREMENTS. MOMENTIVE PRODUCT USERS ARE RESPONSIBLE FOR DETERMINING THE SUITABILITY OF MOMENTIVE PRODUCTS FOR THE PARTICULAR APPLICATION AND ALL RELATED PROJECT DETAILS. MOMENTIVE MAKES NO WARRANTY, EXPRESS OR IMPLIED, WITH RESPECT TO THE PERFORMANCE SUITABILITY OR FITNESS FOR INTENDED USE OF ITS PRODUCTS IN ANY USER'S APPLICATION. ANY SALE OF PRODUCTS OR DELIVERY OF CUSTOMER SUPPORT AND ADVICE BY MOMENTIVE PERFORMANCE MATERIALS INC. AND/OR ANY OF ITS AFFILIATES. ("MOMENTIVE") IS MADE EXCLUSIVELY UNDER MOMENTIVE'S STANDARD CONDITIONS OF SALE, WHICH ARE AVAILABLE AT SILICONESFORBUILDING.COM. COPYRIGHT 2025 MOMENTIVE PERFORMANCE MATERIALS INC. ALL RIGHTS RESERVED.	SCALE: N.T.S.
		DATE: 2017 - 03 - 27





**NOTES:**

- Consult brick tie/anchor manufacturer for proper installation instructions.
- If desired additional Elemax 5000 Liquid Flashing may be post applied at fastener heads.
- **Option 3:** apply Elemax 5000 Liquid Flashing prior to application of brick tie/anchor.
- See Elemax 2600 AWB Coating data sheet for list of additional acceptable sealants/liquid flashing.

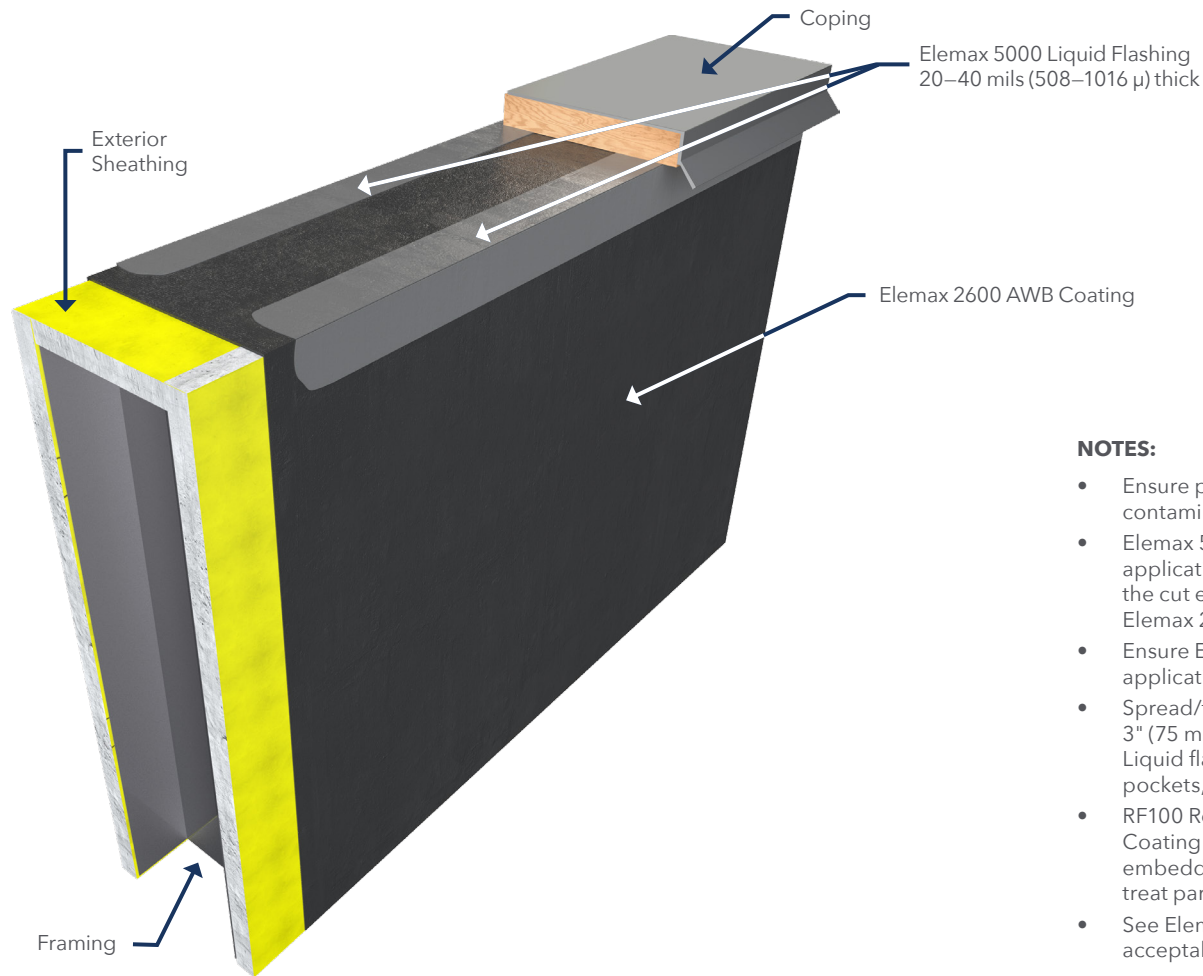
**BRICK TIE / ANCHOR INSTALLED AFTER ELEMEX 2600 AWB COATING  
ELEMEX 2600 AIR AND WATER RESISTIVE BARRIER COATING SYSTEM**

**DETAILS #:** AWB - 22

THE ABOVE DETAIL IS FOR ILLUSTRATION PURPOSES ONLY. IT IS INTENDED AS A GUIDELINE TO ASSIST MOMENTIVE PRODUCT USERS IN DEVELOPING PROJECT SPECIFIC DETAILS. CONSULT APPROPRIATE SPECIFICATION DOCUMENTS, DATA SHEET, BUILDING CODES AND ANY OTHER INFORMATION DEEMED NECESSARY FOR SPECIFIC REQUIREMENTS. MOMENTIVE PRODUCT USERS ARE RESPONSIBLE FOR DETERMINING THE SUITABILITY OF MOMENTIVE PRODUCTS FOR THE PARTICULAR APPLICATION AND ALL RELATED PROJECT DETAILS. MOMENTIVE MAKES NO WARRANTY, EXPRESS OR IMPLIED, WITH RESPECT TO THE PERFORMANCE SUITABILITY OR FITNESS FOR INTENDED USE OF ITS PRODUCTS IN ANY USER'S APPLICATION. ANY SALE OF PRODUCTS OR DELIVERY OF CUSTOMER SUPPORT AND ADVICE BY MOMENTIVE PERFORMANCE MATERIALS INC. AND/OR ANY OF ITS AFFILIATES. ("MOMENTIVE") IS MADE EXCLUSIVELY UNDER MOMENTIVE'S STANDARD CONDITIONS OF SALE, WHICH ARE AVAILABLE AT SILICONESFORBUILDING.COM. COPYRIGHT 2025 MOMENTIVE PERFORMANCE MATERIALS INC. ALL RIGHTS RESERVED.

**SCALE:** N.T.S.

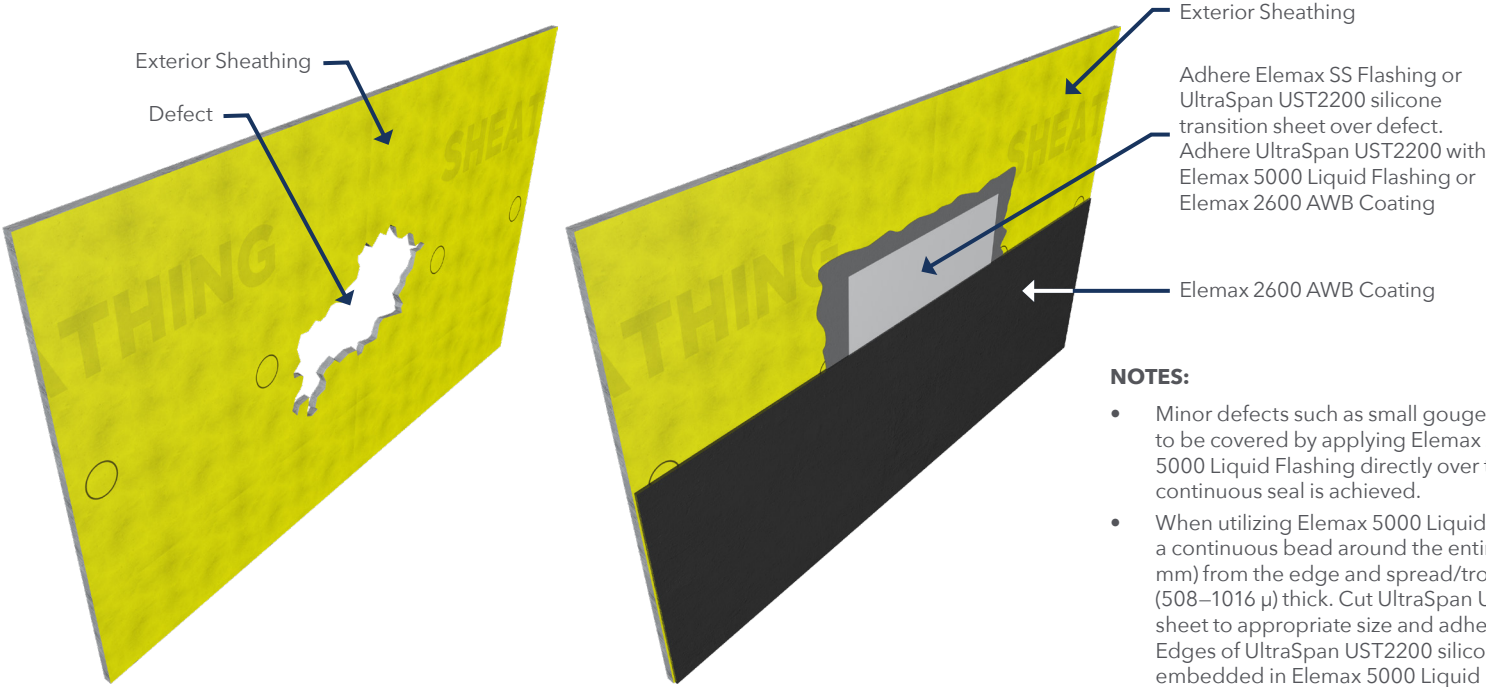
**DATE:** 2017 - 03 - 27

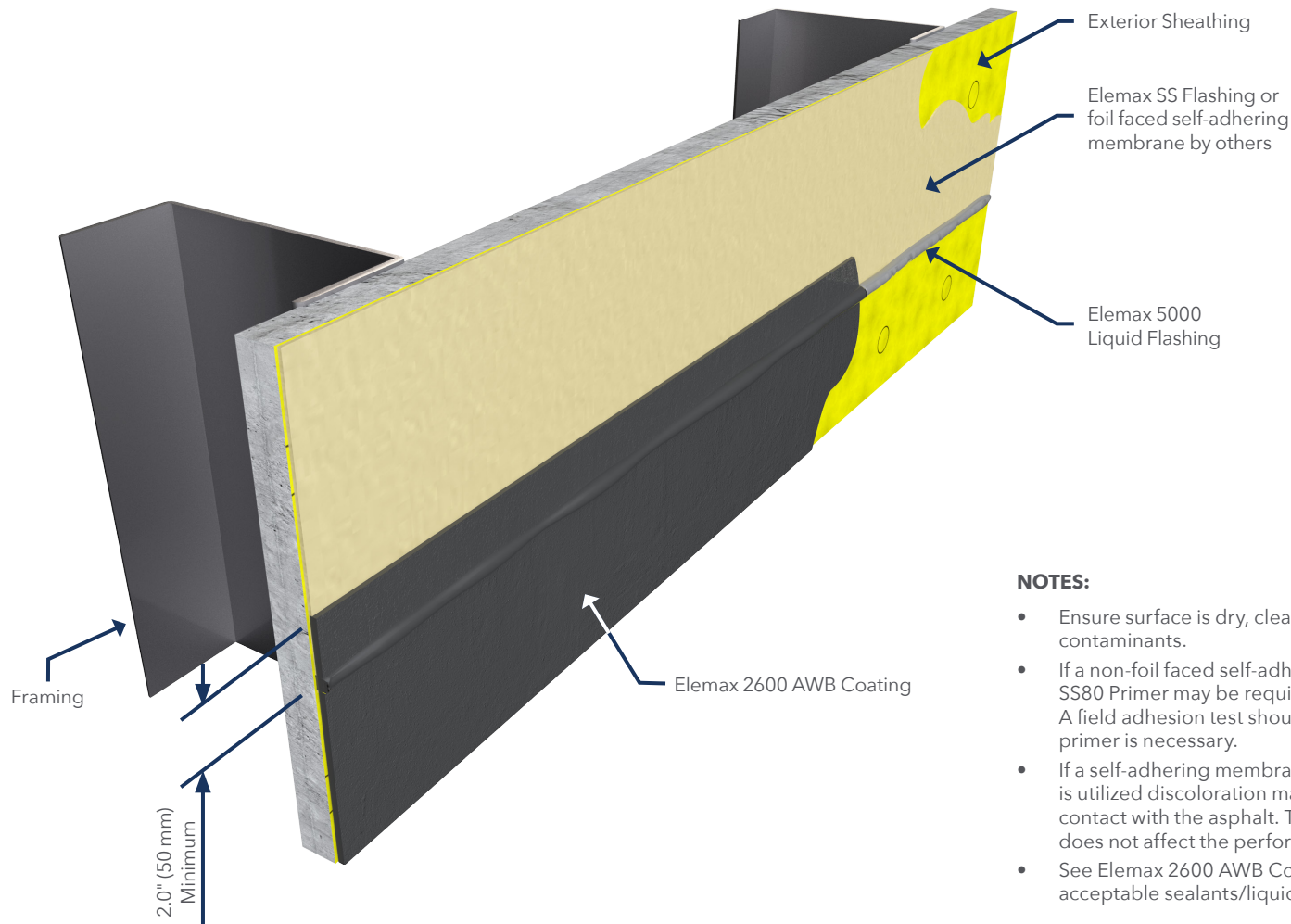


**NOTES:**

- Ensure parapet is dry, clean and free of dirt, debris and contaminants.
- Elemax 5000 Liquid Flashing may be installed before or after the application of Elemax 2600 AWB Coating. When installing before the cut edges of gypsum sheathing may need to be coated with Elemax 2600 AWB Coating.
- Ensure Elemax 2600 AWB Coating is dry to the touch prior to the application of Elemax 5000 Liquid Flashing.
- Spread/trowel Elemax 5000 Liquid Flashing to a minimum of 3" (75 mm) overlap onto the top and both sides of the parapet. Liquid flashing should be continuous and smooth while free of pockets, voids and/or pinholes.
- RF100 Reinforcing Fabric embedded in Elemax 2600 AWB Coating or UltraSpan UST2200 silicone transition sheet embedded in Elemax 5000 Liquid Flashing may also be utilized to treat parapet.
- See Elemax 2600 AWB Coating data sheet for list of additional acceptable sealants/liquid flashing.

Page 24	PARAPET ELEMEX 2600 AIR AND WATER RESISTIVE BARRIER COATING SYSTEM	DETAILS #: AWB - 23
	THE ABOVE DETAIL IS FOR ILLUSTRATION PURPOSES ONLY. IT IS INTENDED AS A GUIDELINE TO ASSIST MOMENTIVE PRODUCT USERS IN DEVELOPING PROJECT SPECIFIC DETAILS. CONSULT APPROPRIATE SPECIFICATION DOCUMENTS, DATA SHEET, BUILDING CODES AND ANY OTHER INFORMATION DEEMED NECESSARY FOR SPECIFIC REQUIREMENTS. MOMENTIVE PRODUCT USERS ARE RESPONSIBLE FOR DETERMINING THE SUITABILITY OF MOMENTIVE PRODUCTS FOR THE PARTICULAR APPLICATION AND ALL RELATED PROJECT DETAILS. MOMENTIVE MAKES NO WARRANTY, EXPRESS OR IMPLIED, WITH RESPECT TO THE PERFORMANCE SUITABILITY OR FITNESS FOR INTENDED USE OF ITS PRODUCTS IN ANY USER'S APPLICATION. ANY SALE OF PRODUCTS OR DELIVERY OF CUSTOMER SUPPORT AND ADVICE BY MOMENTIVE PERFORMANCE MATERIALS INC. AND/OR ANY OF ITS AFFILIATES. ("MOMENTIVE") IS MADE EXCLUSIVELY UNDER MOMENTIVE'S STANDARD CONDITIONS OF SALE, WHICH ARE AVAILABLE AT SILICONESFORBUILDING.COM. COPYRIGHT 2025 MOMENTIVE PERFORMANCE MATERIALS INC. ALL RIGHTS RESERVED.	SCALE: N.T.S.
		DATE: 2017 - 03 - 27

<div></div> <div><p><b>NOTES:</b></p><ul style="list-style-type: none"><li>• Minor defects such as small gouges, dents and etc, may be able to be covered by applying Elemax 2600 AWB Coating or Elemax 5000 Liquid Flashing directly over the affected areas. Ensure a continuous seal is achieved.</li><li>• When utilizing Elemax 5000 Liquid Flashing as an adhesive apply a continuous bead around the entire defect area at least 1" (25 mm) from the edge and spread/trowel smooth to 20–40 mils (508–1016 µ) thick. Cut UltraSpan UST2200 silicone transition sheet to appropriate size and adhere over the defective area. Edges of UltraSpan UST2200 silicone transition sheet must be fully embedded in Elemax 5000 Liquid Flashing ensuring a watertight seal is achieved.</li><li>• When utilizing Elemax 2600 AWB Coating as an adhesive, apply first coat (min. 10 mils [254 µ]) by roller in sufficient width to accommodate UltraSpan UST2200 silicone transition sheet. Wait until coating becomes tacky and press UltraSpan UST2200 silicone transition sheet into the coating.</li><li>• Apply Elemax 2600 AWB Coating over entire face of sheathing and Elemax SS flashing or UltraSpan UST2200 silicone transition sheet.</li><li>• See Elemax 2600 AWB Coating data sheet for list of additional acceptable sealants/liquid flashing.</li></ul></div>		
Page 25	<b>SUBSTRATE DEFECTS</b> <b>ELEMAX 2600 AIR AND WATER RESISTIVE BARRIER COATING SYSTEM</b>	<b>DETAILS #:</b> AWB - 24
	<small>THE ABOVE DETAIL IS FOR ILLUSTRATION PURPOSES ONLY. IT IS INTENDED AS A GUIDELINE TO ASSIST MOMENTIVE PRODUCT USERS IN DEVELOPING PROJECT SPECIFIC DETAILS. CONSULT APPROPRIATE SPECIFICATION DOCUMENTS, DATA SHEET, BUILDING CODES AND ANY OTHER INFORMATION DEEMED NECESSARY FOR SPECIFIC REQUIREMENTS. MOMENTIVE PRODUCT USERS ARE RESPONSIBLE FOR DETERMINING THE SUITABILITY OF MOMENTIVE PRODUCTS FOR THE PARTICULAR APPLICATION AND ALL RELATED PROJECT DETAILS. MOMENTIVE MAKES NO WARRANTY, EXPRESS OR IMPLIED, WITH RESPECT TO THE PERFORMANCE SUITABILITY OR FITNESS FOR INTENDED USE OF ITS PRODUCTS IN ANY USER'S APPLICATION. ANY SALE OF PRODUCTS OR DELIVERY OF CUSTOMER SUPPORT AND ADVICE BY MOMENTIVE PERFORMANCE MATERIALS INC. AND/OR ANY OF ITS AFFILIATES. ("MOMENTIVE") IS MADE EXCLUSIVELY UNDER MOMENTIVE'S STANDARD CONDITIONS OF SALE, WHICH ARE AVAILABLE AT SILICONESFORBUILDING.COM. COPYRIGHT 2025 MOMENTIVE PERFORMANCE MATERIALS INC. ALL RIGHTS RESERVED.</small>	<b>SCALE:</b> N.T.S.
		<b>DATE:</b> 2017 - 03 - 27



**NOTES:**

- Ensure surface is dry, clean and free of dirt, debris and contaminants.
- If a non-foil faced self-adhering membrane is utilized the use of SS80 Primer may be required prior to the application of materials. A field adhesion test should be performed to verify if the use of primer is necessary.
- If a self-adhering membrane with an asphalt based adhesive is utilized discoloration may occur where products come into contact with the asphalt. This discoloration is aesthetic only and does not affect the performance of products.
- See Elemax 2600 AWB Coating data sheet for list of additional acceptable sealants/liquid flashing.

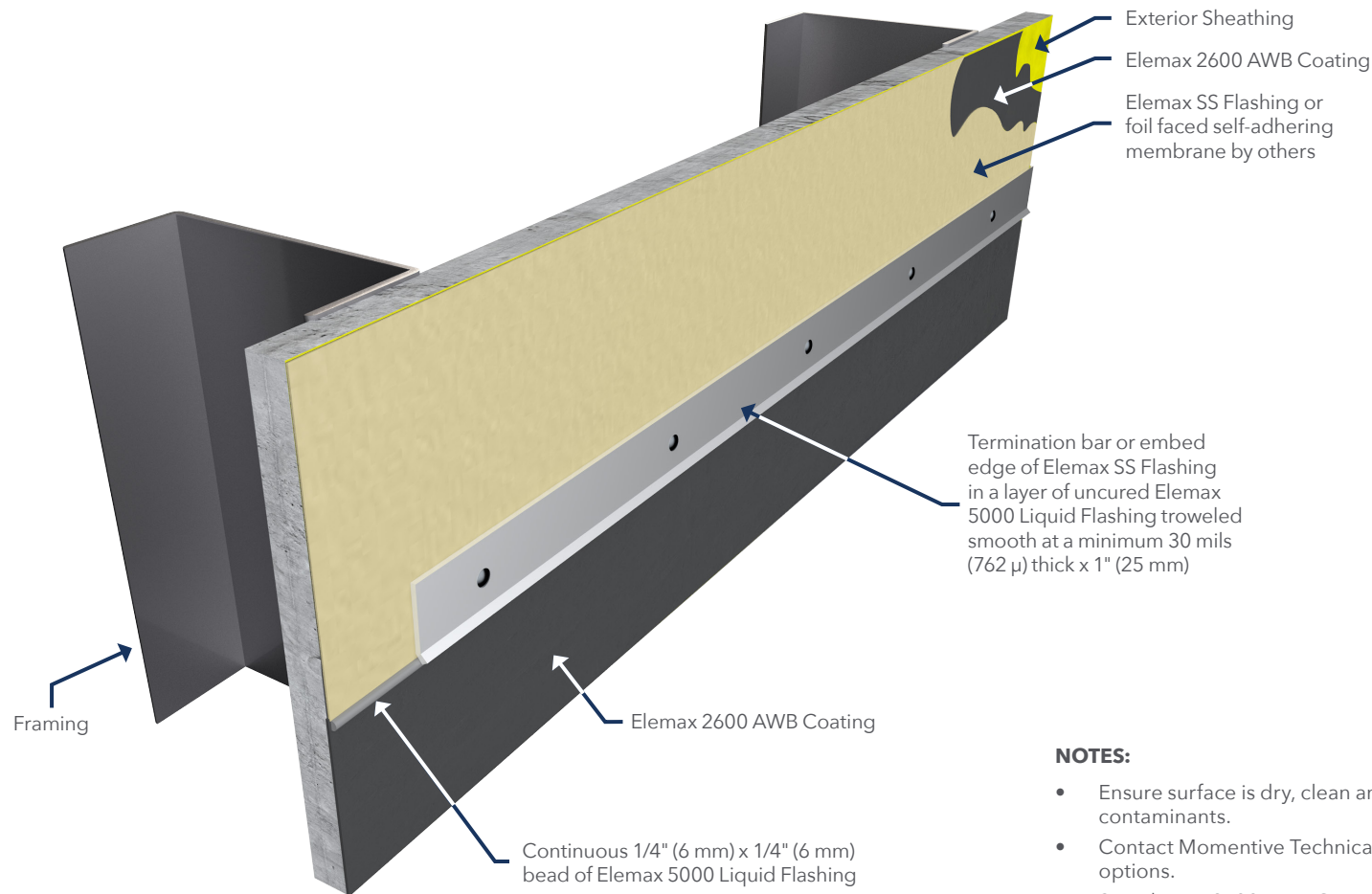
**SELF-ADHERING MEMBRANE TIE IN-METHOD A  
ELEMAX 2600 AIR AND WATER RESISTIVE BARRIER COATING SYSTEM**

**DETAILS #:** AWB - 25

THE ABOVE DETAIL IS FOR ILLUSTRATION PURPOSES ONLY. IT IS INTENDED AS A GUIDELINE TO ASSIST MOMENTIVE PRODUCT USERS IN DEVELOPING PROJECT SPECIFIC DETAILS. CONSULT APPROPRIATE SPECIFICATION DOCUMENTS, DATA SHEET, BUILDING CODES AND ANY OTHER INFORMATION DEEMED NECESSARY FOR SPECIFIC REQUIREMENTS. MOMENTIVE PRODUCT USERS ARE RESPONSIBLE FOR DETERMINING THE SUITABILITY OF MOMENTIVE PRODUCTS FOR THE PARTICULAR APPLICATION AND ALL RELATED PROJECT DETAILS. MOMENTIVE MAKES NO WARRANTY, EXPRESS OR IMPLIED, WITH RESPECT TO THE PERFORMANCE SUITABILITY OR FITNESS FOR INTENDED USE OF ITS PRODUCTS IN ANY USER'S APPLICATION. ANY SALE OF PRODUCTS OR DELIVERY OF CUSTOMER SUPPORT AND ADVICE BY MOMENTIVE PERFORMANCE MATERIALS INC. AND/OR ANY OF ITS AFFILIATES. ("MOMENTIVE") IS MADE EXCLUSIVELY UNDER MOMENTIVE'S STANDARD CONDITIONS OF SALE, WHICH ARE AVAILABLE AT SILICONESFORBUILDING.COM. COPYRIGHT 2025 MOMENTIVE PERFORMANCE MATERIALS INC. ALL RIGHTS RESERVED.

**SCALE:** N.T.S.

**DATE:** 2017 - 03 - 27

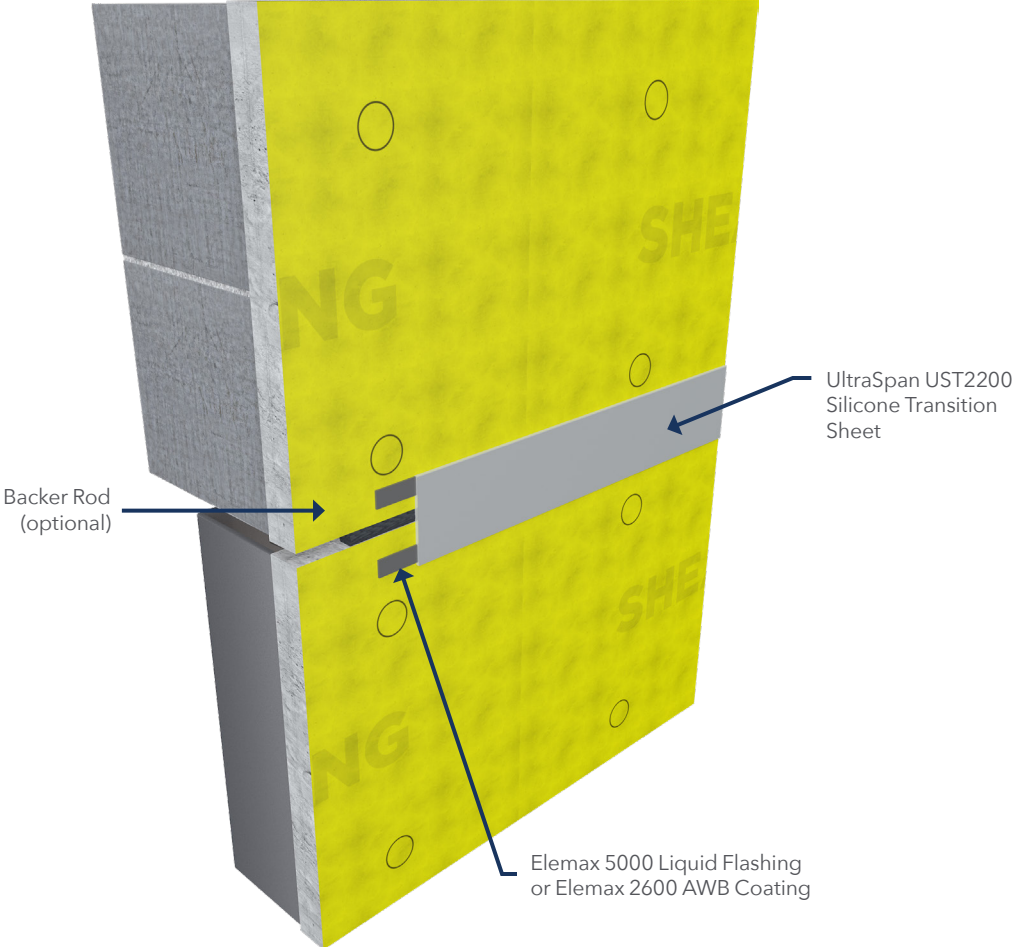


**NOTES:**

- Ensure surface is dry, clean and free of dirt, debris and contaminants.
- Contact Momentive Technical Services for alternate transitioning options.
- See Elemax 2600 AWB Coating data sheet for list of additional acceptable sealants/liquid flashing.

Page 27	SELF-ADHERING MEMBRANE TIE IN-METHOD B ELEMEX 2600 AIR AND WATER RESISTIVE BARRIER COATING SYSTEM	DETAILS #: AWB - 26
	THE ABOVE DETAIL IS FOR ILLUSTRATION PURPOSES ONLY. IT IS INTENDED AS A GUIDELINE TO ASSIST MOMENTIVE PRODUCT USERS IN DEVELOPING PROJECT SPECIFIC DETAILS. CONSULT APPROPRIATE SPECIFICATION DOCUMENTS, DATA SHEET, BUILDING CODES AND ANY OTHER INFORMATION DEEMED NECESSARY FOR SPECIFIC REQUIREMENTS. MOMENTIVE PRODUCT USERS ARE RESPONSIBLE FOR DETERMINING THE SUITABILITY OF MOMENTIVE PRODUCTS FOR THE PARTICULAR APPLICATION AND ALL RELATED PROJECT DETAILS. MOMENTIVE MAKES NO WARRANTY, EXPRESS OR IMPLIED, WITH RESPECT TO THE PERFORMANCE SUITABILITY OR FITNESS FOR INTENDED USE OF ITS PRODUCTS IN ANY USER'S APPLICATION. ANY SALE OF PRODUCTS OR DELIVERY OF CUSTOMER SUPPORT AND ADVICE BY MOMENTIVE PERFORMANCE MATERIALS INC. AND/OR ANY OF ITS AFFILIATES. ("MOMENTIVE") IS MADE EXCLUSIVELY UNDER MOMENTIVE'S STANDARD CONDITIONS OF SALE, WHICH ARE AVAILABLE AT SILICONESFORBUILDING.COM. COPYRIGHT 2025 MOMENTIVE PERFORMANCE MATERIALS INC. ALL RIGHTS RESERVED.	SCALE: N.T.S.
		DATE: 2017 - 03 - 27



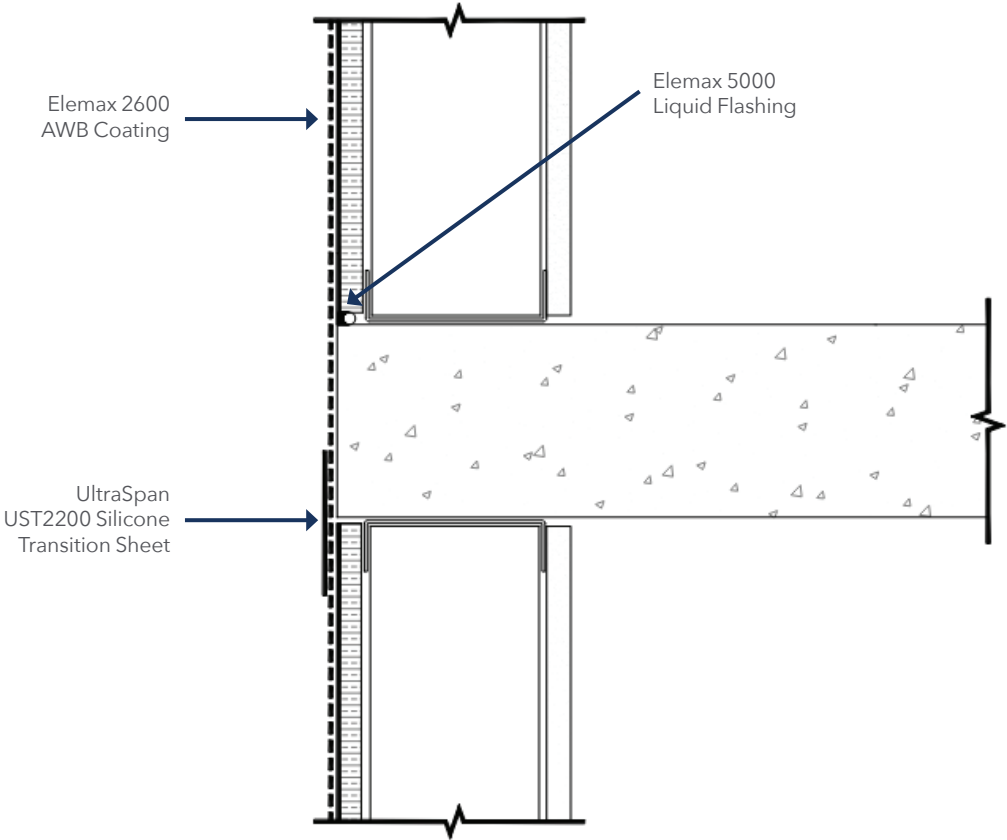


**NOTES:**

- UltraSpan UST2200 silicone transition sheet may be applied before or after application of Elemax 2600 AWB Coating.
- When utilizing Elemax 5000 Liquid Flashing as an adhesive, spread/trowel smooth to 20–40 mils thick. Adhere UltraSpan UST2200 silicone transition sheet and ensure edges are fully embedded in Elemax 5000 Liquid Flashing.
- When utilizing Elemax 2600 AWB Coating as an adhesive, apply first coat (min. 10 mils) by roller in sufficient width to accommodate UltraSpan UST2200 silicone transition sheet. Wait until coating becomes tacky and press UltraSpan UST2200 silicone transition sheet into the coating. Apply a second coat of Elemax 2600 AWB Coating (min. 10 mils) immediately over the UltraSpan UST2200 silicone transition sheet.
- See Elemax 2600 AWB Coating data sheet for list of additional acceptable sealants/liquid flashing.

Page 28	HEAD OF WALL EXPANSION / DEFLECTION JOINT – SHEATHING PAST FLOORLINE ELEMEX 2600 AIR AND WATER RESISTIVE BARRIER COATING SYSTEM	DETAILS #: AWB - 27
	THE ABOVE DETAIL IS FOR ILLUSTRATION PURPOSES ONLY. IT IS INTENDED AS A GUIDELINE TO ASSIST MOMENTIVE PRODUCT USERS IN DEVELOPING PROJECT SPECIFIC DETAILS. CONSULT APPROPRIATE SPECIFICATION DOCUMENTS, DATA SHEET, BUILDING CODES AND ANY OTHER INFORMATION DEEMED NECESSARY FOR SPECIFIC REQUIREMENTS. MOMENTIVE PRODUCT USERS ARE RESPONSIBLE FOR DETERMINING THE SUITABILITY OF MOMENTIVE PRODUCTS FOR THE PARTICULAR APPLICATION AND ALL RELATED PROJECT DETAILS. MOMENTIVE MAKES NO WARRANTY, EXPRESS OR IMPLIED, WITH RESPECT TO THE PERFORMANCE SUITABILITY OR FITNESS FOR INTENDED USE OF ITS PRODUCTS IN ANY USER'S APPLICATION. ANY SALE OF PRODUCTS OR DELIVERY OF CUSTOMER SUPPORT AND ADVICE BY MOMENTIVE PERFORMANCE MATERIALS INC. AND/OR ANY OF ITS AFFILIATES. ("MOMENTIVE") IS MADE EXCLUSIVELY UNDER MOMENTIVE'S STANDARD CONDITIONS OF SALE, WHICH ARE AVAILABLE AT SILICONESFORBUILDING.COM. COPYRIGHT 2025 MOMENTIVE PERFORMANCE MATERIALS INC. ALL RIGHTS RESERVED.	SCALE: N.T.S.
		DATE: 2020 - 12 - 02

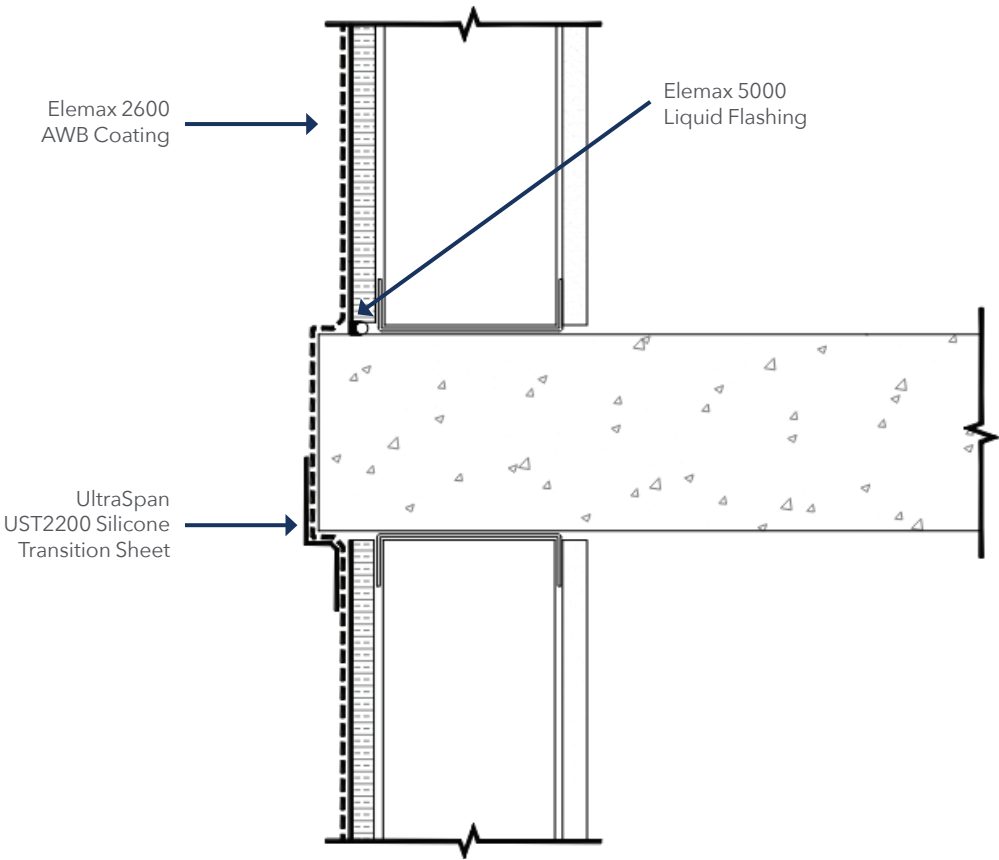




**NOTES:**

- UltraSpan UST2200 silicone transition sheet may be applied before or after application of Elemax 2600 AWB Coating.
- When utilizing Elemax 5000 Liquid Flashing as an adhesive, spread/trowel smooth to 20-40 mils thick. Adhere UltraSpan UST2200 silicone transition sheet and ensure edges are fully embedded in Elemax 5000 Liquid Flashing.
- When utilizing Elemax 2600 AWB Coating as an adhesive, apply first coat (min. 10 mils) by roller in sufficient width to accommodate UltraSpan UST2200 silicone transition sheet. Wait until coating becomes tacky and press UltraSpan UST2200 silicone transition sheet into the coating. Apply a second coat of Elemax 2600 AWB Coating (min. 10 mils) immediately over the UltraSpan UST2200 silicone transition sheet.
- A properly configured fillet bead of Elemax 5000 Liquid Flashing may be utilized to treat change in substrate at inside corners with gaps < 1/2". The use of backer rod may be required. Ensure a minimum 1/4"-3/8" adhesive contact to both sides.
- See Elemax 2600 AWB Coating data sheet for list of additional acceptable sealants/liquid flashing.

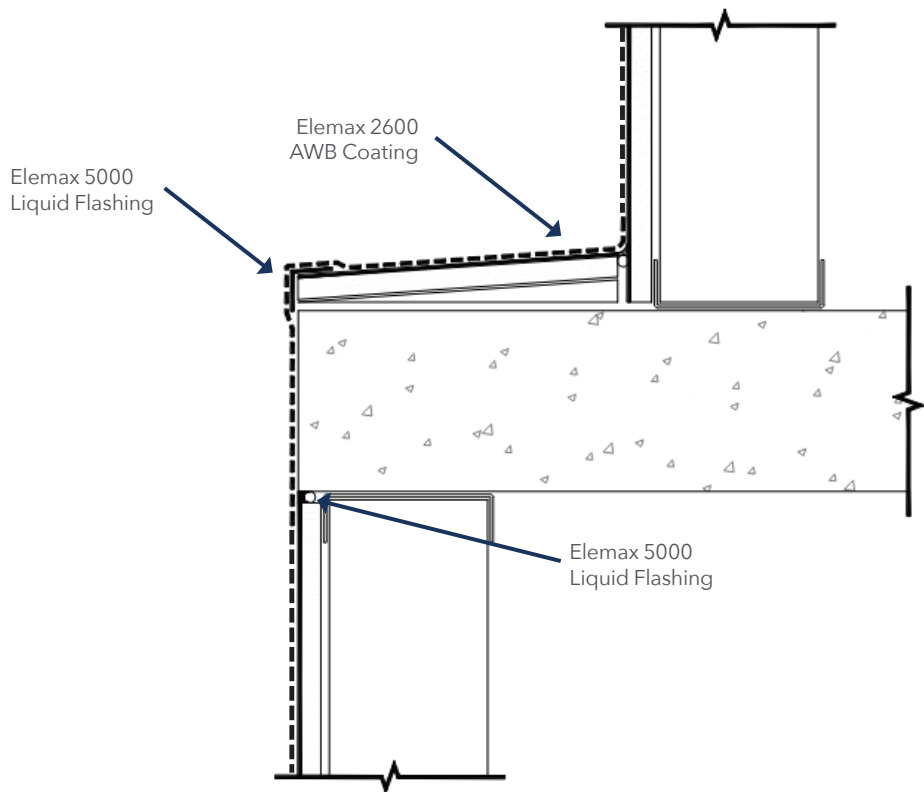
Page 29	HEAD OF WALL EXPANSION / DEFLECTION JOINT – SHEATHING FLUSH WITH FLOORLINE ELEMEX 2600 AIR AND WATER RESISTIVE BARRIER COATING SYSTEM	DETAILS #: AWB - 28
	THE ABOVE DETAIL IS FOR ILLUSTRATION PURPOSES ONLY. IT IS INTENDED AS A GUIDELINE TO ASSIST MOMENTIVE PRODUCT USERS IN DEVELOPING PROJECT SPECIFIC DETAILS. CONSULT APPROPRIATE SPECIFICATION DOCUMENTS, DATA SHEET, BUILDING CODES AND ANY OTHER INFORMATION DEEMED NECESSARY FOR SPECIFIC REQUIREMENTS. MOMENTIVE PRODUCT USERS ARE RESPONSIBLE FOR DETERMINING THE SUITABILITY OF MOMENTIVE PRODUCTS FOR THE PARTICULAR APPLICATION AND ALL RELATED PROJECT DETAILS. MOMENTIVE MAKES NO WARRANTY, EXPRESS OR IMPLIED, WITH RESPECT TO THE PERFORMANCE SUITABILITY OR FITNESS FOR INTENDED USE OF ITS PRODUCTS IN ANY USER'S APPLICATION. ANY SALE OF PRODUCTS OR DELIVERY OF CUSTOMER SUPPORT AND ADVICE BY MOMENTIVE PERFORMANCE MATERIALS INC. AND/OR ANY OF ITS AFFILIATES. ("MOMENTIVE") IS MADE EXCLUSIVELY UNDER MOMENTIVE'S STANDARD CONDITIONS OF SALE, WHICH ARE AVAILABLE AT SILICONESFORBUILDING.COM. COPYRIGHT 2025 MOMENTIVE PERFORMANCE MATERIALS INC. ALL RIGHTS RESERVED.	SCALE: N.T.S.
		DATE: 2020 - 12 - 02



**NOTES:**

- UltraSpan UST2200 silicone transition sheet may be applied before or after application of Elemax 2600 AWB Coating.
- When utilizing Elemax 5000 Liquid Flashing as an adhesive, spread/trowel smooth to 20-40 mils thick. Adhere UltraSpan UST2200 silicone transition sheet and ensure edges are fully embedded in Elemax 5000 Liquid Flashing.
- When utilizing Elemax 2600 AWB Coating as an adhesive, apply first coat (min. 10 mils) by roller in sufficient width to accommodate UltraSpan UST2200 silicone transition sheet. Wait until coating becomes tacky and press UltraSpan UST2200 silicone transition sheet into the coating. Apply a second coat of Elemax 2600 AWB Coating (min. 10 mils) immediately over the UltraSpan UST2200 silicone transition sheet.
- A properly configured fillet bead of Elemax 5000 Liquid Flashing may be utilized to treat change in substrate at inside corners with gaps < 1/2". The use of backer rod may be required. Ensure a minimum 1/4"-3/8" adhesive contact to both sides.
- See Elemax 2600 AWB Coating data sheet for list of additional acceptable sealants/liquid flashing.

Page 30	HEAD OF WALL EXPANSION / DEFLECTION JOINT – SHEATHING RECESSED OF FLOORLINE ELEMEX 2600 AIR AND WATER RESISTIVE BARRIER COATING SYSTEM	DETAILS #: AWB - 29
	THE ABOVE DETAIL IS FOR ILLUSTRATION PURPOSES ONLY. IT IS INTENDED AS A GUIDELINE TO ASSIST MOMENTIVE PRODUCT USERS IN DEVELOPING PROJECT SPECIFIC DETAILS. CONSULT APPROPRIATE SPECIFICATION DOCUMENTS, DATA SHEET, BUILDING CODES AND ANY OTHER INFORMATION DEEMED NECESSARY FOR SPECIFIC REQUIREMENTS. MOMENTIVE PRODUCT USERS ARE RESPONSIBLE FOR DETERMINING THE SUITABILITY OF MOMENTIVE PRODUCTS FOR THE PARTICULAR APPLICATION AND ALL RELATED PROJECT DETAILS. MOMENTIVE MAKES NO WARRANTY, EXPRESS OR IMPLIED, WITH RESPECT TO THE PERFORMANCE SUITABILITY OR FITNESS FOR INTENDED USE OF ITS PRODUCTS IN ANY USER'S APPLICATION. ANY SALE OF PRODUCTS OR DELIVERY OF CUSTOMER SUPPORT AND ADVICE BY MOMENTIVE PERFORMANCE MATERIALS INC. AND/OR ANY OF ITS AFFILIATES. ("MOMENTIVE") IS MADE EXCLUSIVELY UNDER MOMENTIVE'S STANDARD CONDITIONS OF SALE, WHICH ARE AVAILABLE AT SILICONESFORBUILDING.COM. COPYRIGHT 2025 MOMENTIVE PERFORMANCE MATERIALS INC. ALL RIGHTS RESERVED.	SCALE: N.T.S.
		DATE: 2020 - 12 - 02



**NOTES:**

- Elemax 5000 Liquid Flashing may be installed before or after the application of Elemax 2600 AWB Coating.
- Ensure Elemax 2600 AWB Coating is dry to the touch prior to the application of Elemax 5000 Liquid Flashing.
- **Inside Corner:** a properly configured fillet bead of Elemax 5000 Liquid Flashing may be utilized to treat change in substrate at inside corners with gaps < 1/2". The use of backer rod may be required. Ensure a minimum 1/4"–3/8" adhesive contact to both sides.
- **Outside Corner:** apply Elemax 5000 Liquid Flashing to the outside corner at a nominal 20–40 mils thickness.
- Spread/trowel Elemax 5000 Liquid Flashing to a minimum of 3" onto each side of wall.
- See Elemax 2600 AWB Coating data sheet for list of additional acceptable sealants/liquid flashing.

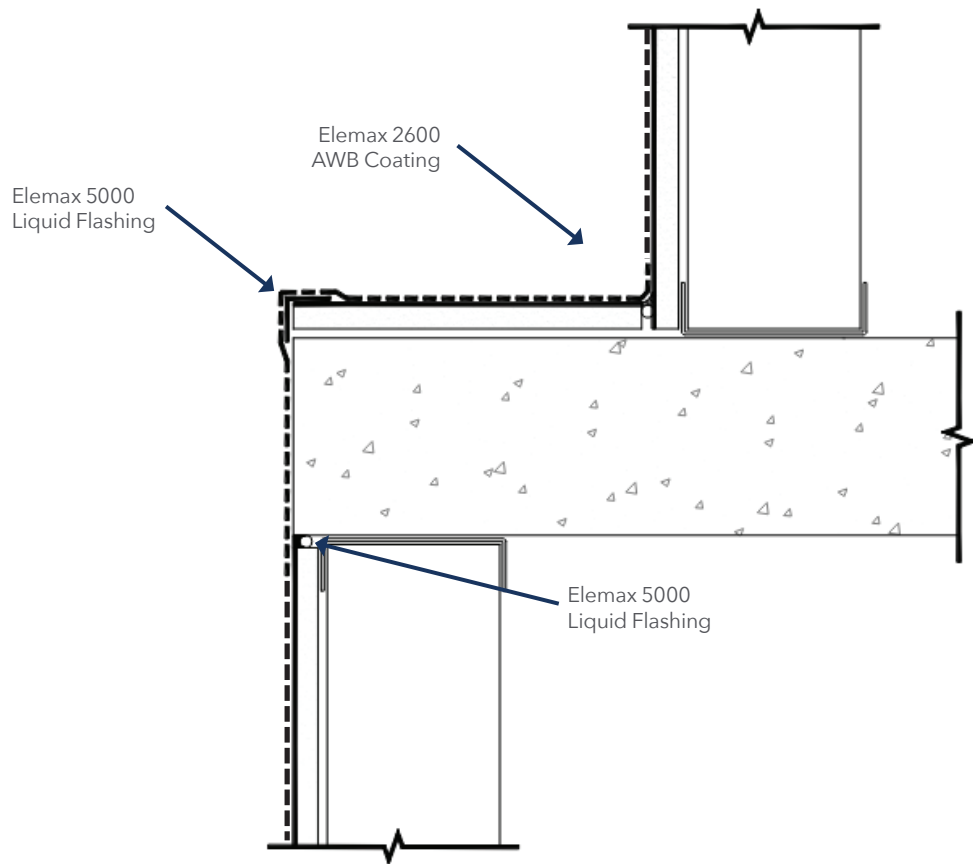
**SLOPED OFFSET APPLICATION  
ELEMEX 2600 AIR AND WATER RESISTIVE BARRIER COATING SYSTEM**

**DETAILS #:** AWB - 30

THE ABOVE DETAIL IS FOR ILLUSTRATION PURPOSES ONLY. IT IS INTENDED AS A GUIDELINE TO ASSIST MOMENTIVE PRODUCT USERS IN DEVELOPING PROJECT SPECIFIC DETAILS. CONSULT APPROPRIATE SPECIFICATION DOCUMENTS, DATA SHEET, BUILDING CODES AND ANY OTHER INFORMATION DEEMED NECESSARY FOR SPECIFIC REQUIREMENTS. MOMENTIVE PRODUCT USERS ARE RESPONSIBLE FOR DETERMINING THE SUITABILITY OF MOMENTIVE PRODUCTS FOR THE PARTICULAR APPLICATION AND ALL RELATED PROJECT DETAILS. MOMENTIVE MAKES NO WARRANTY, EXPRESS OR IMPLIED, WITH RESPECT TO THE PERFORMANCE SUITABILITY OR FITNESS FOR INTENDED USE OF ITS PRODUCTS IN ANY USER'S APPLICATION. ANY SALE OF PRODUCTS OR DELIVERY OF CUSTOMER SUPPORT AND ADVICE BY MOMENTIVE PERFORMANCE MATERIALS INC. AND/OR ANY OF ITS AFFILIATES. ("MOMENTIVE") IS MADE EXCLUSIVELY UNDER MOMENTIVE'S STANDARD CONDITIONS OF SALE, WHICH ARE AVAILABLE AT SILICONESFORBUILDING.COM. COPYRIGHT 2025 MOMENTIVE PERFORMANCE MATERIALS INC. ALL RIGHTS RESERVED.

**SCALE:** N.T.S.

**DATE:** 2020 - 12 - 04



**NOTES:**

- Elemax 5000 Liquid Flashing may be installed before or after the application of Elemax 2600 AWB Coating.
- Ensure Elemax 2600 AWB Coating is dry to the touch prior to the application of Elemax 5000 Liquid Flashing.
- **Inside Corner:** a properly configured fillet bead of Elemax 5000 Liquid Flashing may be utilized to treat change in substrate at inside corners with gaps < 1/2". The use of backer rod may be required. Ensure a minimum 1/4"–3/8" adhesive contact to both sides.
- **Outside Corner:** apply Elemax 5000 Liquid Flashing to the outside corner at a nominal 20–40 mils thickness.
- Spread/trowel Elemax 5000 Liquid Flashing to a minimum of 3" onto each side of wall.
- See Elemax 2600 AWB Coating data sheet for list of additional acceptable sealants/liquid flashing.

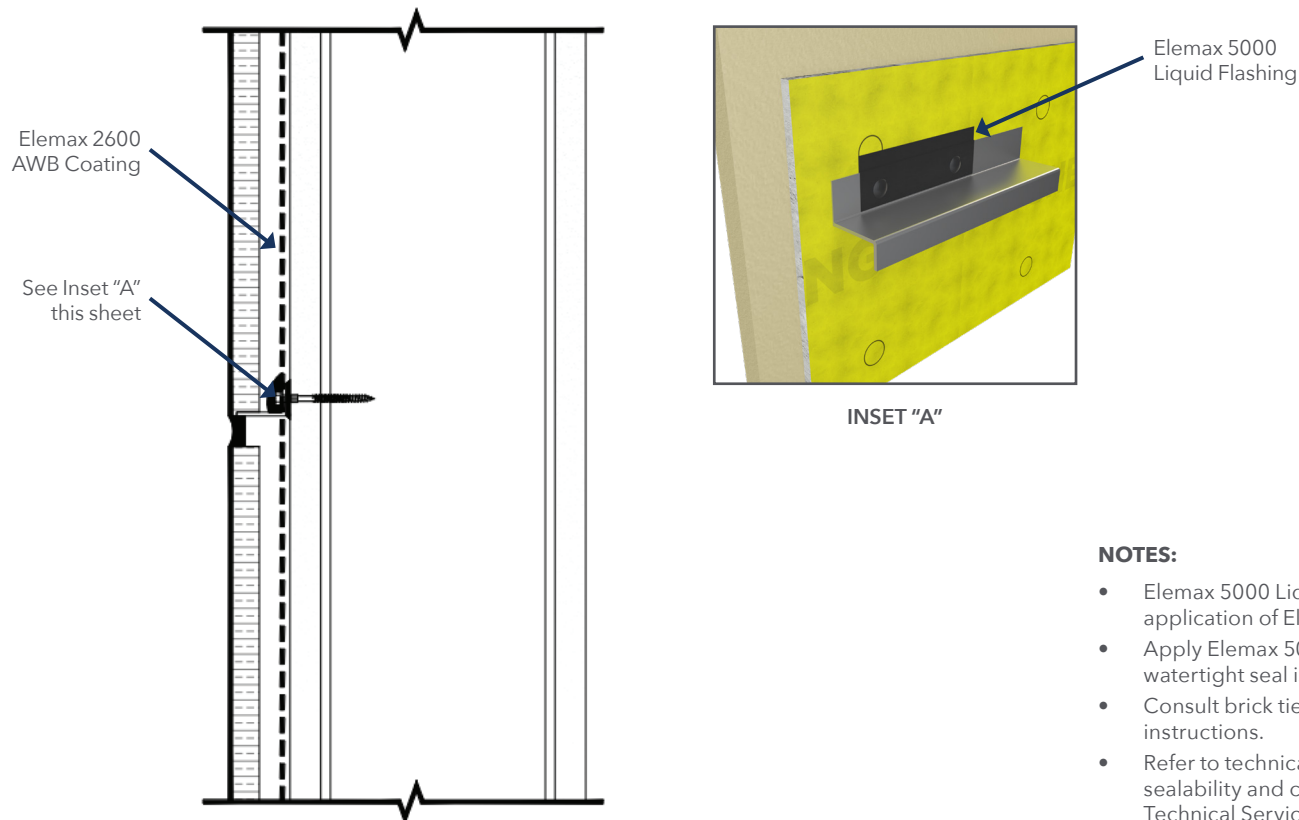
**HORIZONTAL OFFSET APPLICATION  
ELEMEX 2600 AIR AND WATER RESISTIVE BARRIER COATING SYSTEM**

**DETAILS #:** AWB - 31

THE ABOVE DETAIL IS FOR ILLUSTRATION PURPOSES ONLY. IT IS INTENDED AS A GUIDELINE TO ASSIST MOMENTIVE PRODUCT USERS IN DEVELOPING PROJECT SPECIFIC DETAILS. CONSULT APPROPRIATE SPECIFICATION DOCUMENTS, DATA SHEET, BUILDING CODES AND ANY OTHER INFORMATION DEEMED NECESSARY FOR SPECIFIC REQUIREMENTS. MOMENTIVE PRODUCT USERS ARE RESPONSIBLE FOR DETERMINING THE SUITABILITY OF MOMENTIVE PRODUCTS FOR THE PARTICULAR APPLICATION AND ALL RELATED PROJECT DETAILS. MOMENTIVE MAKES NO WARRANTY, EXPRESS OR IMPLIED, WITH RESPECT TO THE PERFORMANCE SUITABILITY OR FITNESS FOR INTENDED USE OF ITS PRODUCTS IN ANY USER'S APPLICATION. ANY SALE OF PRODUCTS OR DELIVERY OF CUSTOMER SUPPORT AND ADVICE BY MOMENTIVE PERFORMANCE MATERIALS INC. AND/OR ANY OF ITS AFFILIATES. ("MOMENTIVE") IS MADE EXCLUSIVELY UNDER MOMENTIVE'S STANDARD CONDITIONS OF SALE, WHICH ARE AVAILABLE AT SILICONESFORBUILDING.COM. COPYRIGHT 2025 MOMENTIVE PERFORMANCE MATERIALS INC. ALL RIGHTS RESERVED.

**SCALE:** N.T.S.

**DATE:** 2020 - 12 - 04



**NOTES:**

- Elemax 5000 Liquid Flashing may be installed before or after the application of Elemax 2600 AWB Coating.
- Apply Elemax 5000 Liquid Flashing over fastener head to ensure a watertight seal is achieved.
- Consult brick tie/anchor manufacture for proper installation instructions.
- Refer to technical document Elemax 2600 AWB Coating fastener sealability and consult with Momentive Performance Materials Technical Service for additional detailing recommendations.
- See Elemax 2600 AWB Coating data sheet for list of additional acceptable sealants/liquid flashing.

Page 33	Z-GIRT FAÇADE ANCHOR ELEMEX 2600 AIR AND WATER RESISTIVE BARRIER COATING SYSTEM	DETAILS #: AWB - 32
	THE ABOVE DETAIL IS FOR ILLUSTRATION PURPOSES ONLY. IT IS INTENDED AS A GUIDELINE TO ASSIST MOMENTIVE PRODUCT USERS IN DEVELOPING PROJECT SPECIFIC DETAILS. CONSULT APPROPRIATE SPECIFICATION DOCUMENTS, DATA SHEET, BUILDING CODES AND ANY OTHER INFORMATION DEEMED NECESSARY FOR SPECIFIC REQUIREMENTS. MOMENTIVE PRODUCT USERS ARE RESPONSIBLE FOR DETERMINING THE SUITABILITY OF MOMENTIVE PRODUCTS FOR THE PARTICULAR APPLICATION AND ALL RELATED PROJECT DETAILS. MOMENTIVE MAKES NO WARRANTY, EXPRESS OR IMPLIED, WITH RESPECT TO THE PERFORMANCE SUITABILITY OR FITNESS FOR INTENDED USE OF ITS PRODUCTS IN ANY USER'S APPLICATION. ANY SALE OF PRODUCTS OR DELIVERY OF CUSTOMER SUPPORT AND ADVICE BY MOMENTIVE PERFORMANCE MATERIALS INC. AND/OR ANY OF ITS AFFILIATES. ("MOMENTIVE") IS MADE EXCLUSIVELY UNDER MOMENTIVE'S STANDARD CONDITIONS OF SALE, WHICH ARE AVAILABLE AT SILICONESFORBUILDING.COM. COPYRIGHT 2025 MOMENTIVE PERFORMANCE MATERIALS INC. ALL RIGHTS RESERVED.	SCALE: N.T.S.
		DATE: 2020 - 12 - 04