



SilPruf™ SCS2000 Sealant

Ensure a clean, long-lasting seal.

Ensure resilient, long-lasting joint strength in new or remedial applications.

SilPruf SCS2000 Sealant is a versatile 100% silicone product that cures to form a durable bond, withstanding high joint movement and weather exposure for decades.



SilPruf SCS2000 sealant is a one-component, high-strength, neutral cure silicone sealant & adhesive for use in structural glazing and weatherproofing applications.

SilPruf SCS2000 sealant is air and water tight to help protect window perimeters, punched openings, flashings, and other critical junctions. Plus, it has the elasticity to handle high-force winds and severe impact. The sealant is supplied as a paste and produces a durable, formed-in-place silicone rubber joint sealant.

Decades of reliable performance.

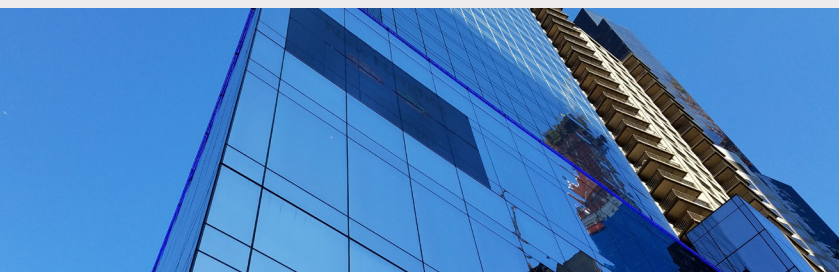
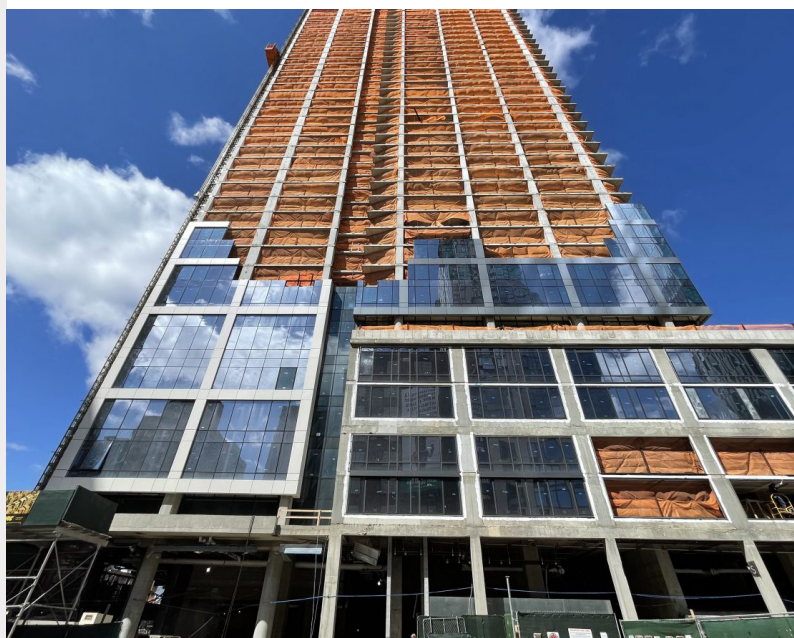
Waterproof - Quickly attains water-resistant properties and provides excellent longterm resistance to natural weathering, humidity and high & low temperatures.

Exceptional Durability - Proven, long-term resistance to extreme temperatures, UV radiation, rain, snow, and wind with negligible change in elasticity. The combination of high tensile strength, high tear strength and the capacity to absorb high deformations (elongation) make this product an outstanding candidate for protective glazing designs and seismic applications. $\pm 50\%$ movement capacity, with excellent extension and compression cycling recovery. Once cured, remains elastic in temperatures from -55°F (-48°C) to 250°F (121°C).

Outstanding adhesion - SilPruf SCS2000 sealant securely bonds to many substrates and finishes, including glass, polycarbonate, vinyl, plastics, wood, paints, coated and anodized aluminum, concrete, brick, wood, terracotta, natural stone, ceramic, porcelain, and EIFS. Some finishes may require a primer.

Easy to use - The material can be easily gunned and tooled under hot or cold conditions. Designed to allow the user sufficient time for placement and tooling, and to aid in field repairs. Low-sag formula stays in place until fully cured.

Available in multiple colors - Currently available in 13 standard colors. Medium Grey matches 2-part UltraGlaze™ SSG4600 grey. Custom colors are also available.



Contact us for additional information.

siliconesforbuilding.com

THE MATERIALS, PRODUCTS, AND SERVICES OF MOMENTIVE PERFORMANCE MATERIALS INC. AND ITS SUBSIDIARIES AND AFFILIATES (COLLECTIVELY "SUPPLIER"), ARE SOLD SUBJECT TO SUPPLIER'S STANDARD CONDITIONS OF SALE, WHICH ARE INCLUDED IN THE APPLICABLE DISTRIBUTOR OR OTHER SALES AGREEMENT, PRINTED ON THE BACK OF ORDER ACKNOWLEDGEMENTS AND INVOICES, AND AVAILABLE UPON REQUEST. ALTHOUGH ANY INFORMATION, RECOMMENDATIONS, OR ADVICE CONTAINED HEREIN IS GIVEN IN GOOD FAITH, SUPPLIER MAKES NO WARRANTY OR GUARANTEE, EXPRESS OR IMPLIED, (i) THAT THE RESULTS DESCRIBED HEREIN WILL BE OBTAINED UNDER END-USE CONDITIONS, OR (ii) AS TO THE EFFECTIVENESS OR SAFETY OF ANY DESIGN INCORPORATING ITS PRODUCTS, MATERIALS, SERVICES, RECOMMENDATIONS, OR ADVICE. EXCEPT AS PROVIDED IN SUPPLIER'S STANDARD CONDITIONS OF SALE, SUPPLIER AND ITS REPRESENTATIVES SHALL IN NO EVENT BE RESPONSIBLE FOR ANY LOSS RESULTING FROM ANY USE OF ITS MATERIALS, PRODUCTS, OR SERVICES DESCRIBED HEREIN. Each user bears full responsibility for making its own determination as to the suitability of Supplier's materials, services, recommendations, or advice for its own particular use. Each user must identify and perform all tests and analyses necessary to assure that its finished parts incorporating Supplier's products, materials, or services will be safe and suitable for or waive any provision of Supplier's standard Conditions of Sale or this Disclaimer, unless any such modification is specifically agreed to in a writing signed by Supplier. No statement contained herein concerning a possible or suggested use of any material, product, service, or design is intended, or should be construed, to grant any license under any patent or other intellectual property right of Supplier covering such use or design, or as a recommendation for the use of such material, product, service, or design in the infringement of any patent or other intellectual property right. Before purchasing or using any Momentive products, please visit www.siliconeforbuilding.com/LegalDisclaimer to view our full product and sales disclaimer. Copyright 2026 Momentive Performance Materials Inc. All rights reserved.



Licensed
Partner