



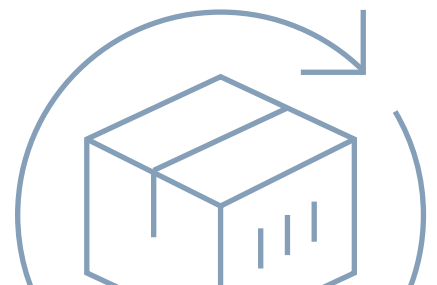
ACCURACY
PROTECTION
FAIRNESS

**EACH MOVE,
EVERY TIME**



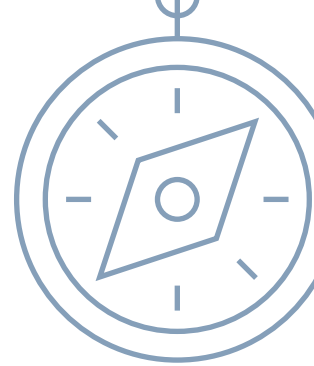
Relocation Auditing

PAST[™] PARSIFAL AUDIT SYSTEM



Parsifal Corporation, 4600 Lipscomb Street, Palm Bay, FL 32905
+1-321-728-0800 | +1-888-385-2961

PARSIFALCORP.COM



PAS™ PARSIFAL AUDITING

Parsifal Corporation offers one of the most trusted opinions in the relocation industry and has established itself as the leading global relocation audit firm for over 40 Years. Our in-depth and thorough audit provides millions of dollars in savings to our clients each year.

AUDITS FOR WELL OVER 73,000 INVOICES ANNUALLY

- **Large, multi-national corporations**
- **Relocation management companies**
- **Government agencies**

UNMATCHED GLOBAL INDUSTRY AUDITING EXPERTISE

Parsifal provides audits for more than 800 entities, finding \$15 million in annual savings for our customers. Since 1981, we remain unmatched by any comparable audit firm in the industry, whether auditing is their main function or a by product of their service package.

OUTSTANDING TRANSPARENCY - PAS™ TECHNOLOGY

Our PAS™ web-based system offers a unique transparency in the industry today, where both clients and carriers can view all communication, documentation, and status relating to their respective invoices. Several very powerful tools are integrated in the system to achieve timely and accurate audit results.

COMPREHENSIVE AND PROPRIETARY RED FLAG SYSTEM – ACCUSCAN™

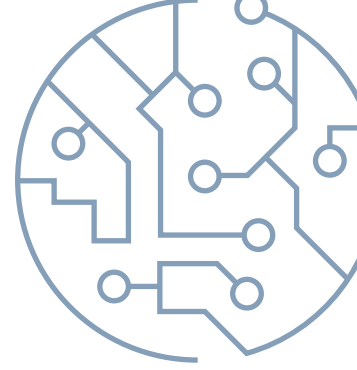
We are working smart. Our **AccuScan™** system allows us to review each invoice more intelligently by pulling contract, policy and industry data into our system and flagging the auditor to apparent unusual charges. The process continues through our **VeriWeight™** analysis to audit the weight of each shipment, ensuring that the billed weight is supported by the inventory, corresponding weight tickets and other information. When a red flag arises, Parsifal presents the discrepancy to the movers with professionalism and respect, and works with the whole team to bring satisfaction and resolution.

ADJUSTMENT CATEGORIZATION

The experienced Parsifal auditor reviews all invoices, making appropriate adjustments and reductions, followed by a unique feature which categorizes reductions. This provides the client highly useful, error category trending information and allows a productive team effort to reduce error frequency.

***Our goal is to enhance respectable relationships and credibility between
Move Managers, Corporate Clients and Service Providers***





PAS™ TECHNOLOGY

INTELLIGENT AND CUTTING-EDGE INNOVATION

Our Parsifal Audit System, PAS™ is a proprietary, highly intelligent, cutting-edge software developed for real-time web access providing the most multi-level transparency in communication with both client and carrier.

Line Item Auditing – Validating that all services were authorized, performed and charged accurately

Comprehensive Reporting – Available 24/7 plus completely flexible reporting for all tracked data at the client's request

Policy Exception and Performance Survey modules – Additional tracking services to assist with making enhanced policy decisions and maintaining top level service from your movers

ERROR CATEGORY TRENDING

Many times, Parsifal can see error trends developing with certain carriers or agents. As a result, Parsifal developed a unique categorization method allowing us to productively correct the issue with the carrier, while providing pertinent information to the client in five areas:

Authorization – Unauthorized exceptions to client policy

Competitive Market Rates – Non-contractual charges negotiated for reasonable market levels

Contract/Tariff – Inappropriate rates, rules and regulations applied

Service – Unperformed services billed and moving logistic errors

Weight – Weight issues or errors

VERIWEIGHT™ - OUR UNIQUE WEIGHT ANALYSIS

A truck shipment is typically weighed both before and after delivery to establish a net weight of the shipment. Although this sounds simple, in reality many situations can occur causing a weight inaccuracy. Here are a few weighing scenarios:

- **Ticket dates do not match shipment dates**
- **Tractor-trailer numbers on weight tickets do not correlate**
- **Other shipment weights are mistakenly included**

As concerns arise, weight tickets are reviewed with the given inventory and discrepancies are investigated with the movers in a professional manner. Many times a difference can be caused by unusually heavy or missing inventory items. In any event, we work with the mover to come to a common resolve on behalf of our mutual client.

