

METRA 2026 CAPITAL PROGRAM & OPPORTUNITIES

NATIONAL RAILROAD CONSTRUCTION
AND MAINTENANCE ASSOCIATION

January 8, 2026

Janice R. Thomas - Deputy Executive
Director - External Affairs, and Chief of Staff



2026-2030 CAPITAL PROGRAM OVERVIEW

Asset Category	2026	2027	2028	2029	2030	2026-2030
Rolling Stock	\$268.20	\$116.60	\$244.80	\$171.50	\$218.10	\$1,019.20
Bridges, Track & Structure	\$68.50	\$92.50	\$53.30	\$73.20	\$43.10	\$330.70
Signals, Electrical & Comm.	\$59.10	\$61.40	\$15.30	\$36.10	\$38.70	\$210.60
Facilities & Equipment	\$27.30	\$15.80	\$12.60	\$23.20	\$15.30	\$94.20
Station & Parking	\$59.90	\$70.00	\$46.30	\$70.70	\$79.40	\$326.40
Support Activities	\$32.30	\$33.70	\$28.40	\$26.90	\$19.30	\$140.60
TOTAL	\$515.30	\$390.00	\$400.80	\$401.60	\$413.90	\$2,121.70

*Dollars in Millions (rounded)

PROCUREMENT POLICY UPDATE - WHAT DO USDOT DBE CHANGES MEAN FOR OPPORTUNITIES?

- On October 3, 2025, the United States Department of Transportation (USDOT) updated DBE certification regulations, removing the presumption of socially and economically disadvantaged based on race or gender. All currently certified DBE firms in the State of Illinois must now have their disadvantaged status reevaluated.
- Metra and the other certifying agencies are working to complete the reevaluation as quickly as possible
- Until the reevaluation is completed, Metra must temporarily suspend establishing DBE goals on new projects
- For existing contracts, firms are expected to comply with contract requirements
- Metra's infrastructure program remains strong, but procurements will be delayed. We expect the opportunities described here will be advertised during 2026.

2026 BRIDGE CONSTRUCTION OPPORTUNITIES

Project	Construction Estimate
UP North Line Bridges South 11, Segment 1 (Three bridges)	\$100M
UP North Line Bridges South 11, Segment 2 (Stage 1 for five bridges, plus one additional bridge rehab)	\$95M
Bridge 86 – Auburn Park North Entrance	\$55-60M
Hickory Creek Bridge 377 Rehabilitation	\$5-7M
Bridge 275 Old 96th Avenue Bridge	\$5-7M
Stony Creek Bridge	\$5-7M
Bridge A418	\$7-9M

METRA UP NORTH LINE BRIDGE CONSTRUCTION OPPORTUNITY

- Replaces 11 existing bridges and rehabilitates 1 bridge over roadways over 2 miles on the north side of Chicago
- Extensive community outreach plan (both Metra and contractor responsibilities)



METRA UP NORTH LINE BRIDGES - THREE PROJECT SEGMENTS

- Allows time for temporary easements to process
- Advances segments of the corridor with reduced risk
- Aims to enhance competition with smaller packaging (three bid opportunities)



BRIDGE PROGRAM

BUILDING THE FUTURE OF OUR RAIL SYSTEM



Investing today reduces long-term costs, extends bridge life, and prevents future service disruptions.

446 Bridges Owned by Metra



Investing in the Future
of Our Infrastructure

Metra's Long-Range Bridge Improvement Plan
is a 20-year initiative to modernize aging bridges and maintain a state of good repair across our rail system.

Replacing or rehabilitating 210 bridges across the region will require an estimated \$2.8 billion in investment over the next two decades.

METRA'S COMPREHENSIVE APPROACH TO BRIDGES

CURRENT APPROACH

Replacing 3 bridges per year on average systemwide.

OR

PROPOSED PLAN

20 year program, replacing
5 bridges and rehabilitating
5 bridges per year.

100 bridges replaced

100 bridges rehabilitated

\$140M per year/\$2.8B total*

BRIDGE PE/NEPA STATUS - GROUP 1



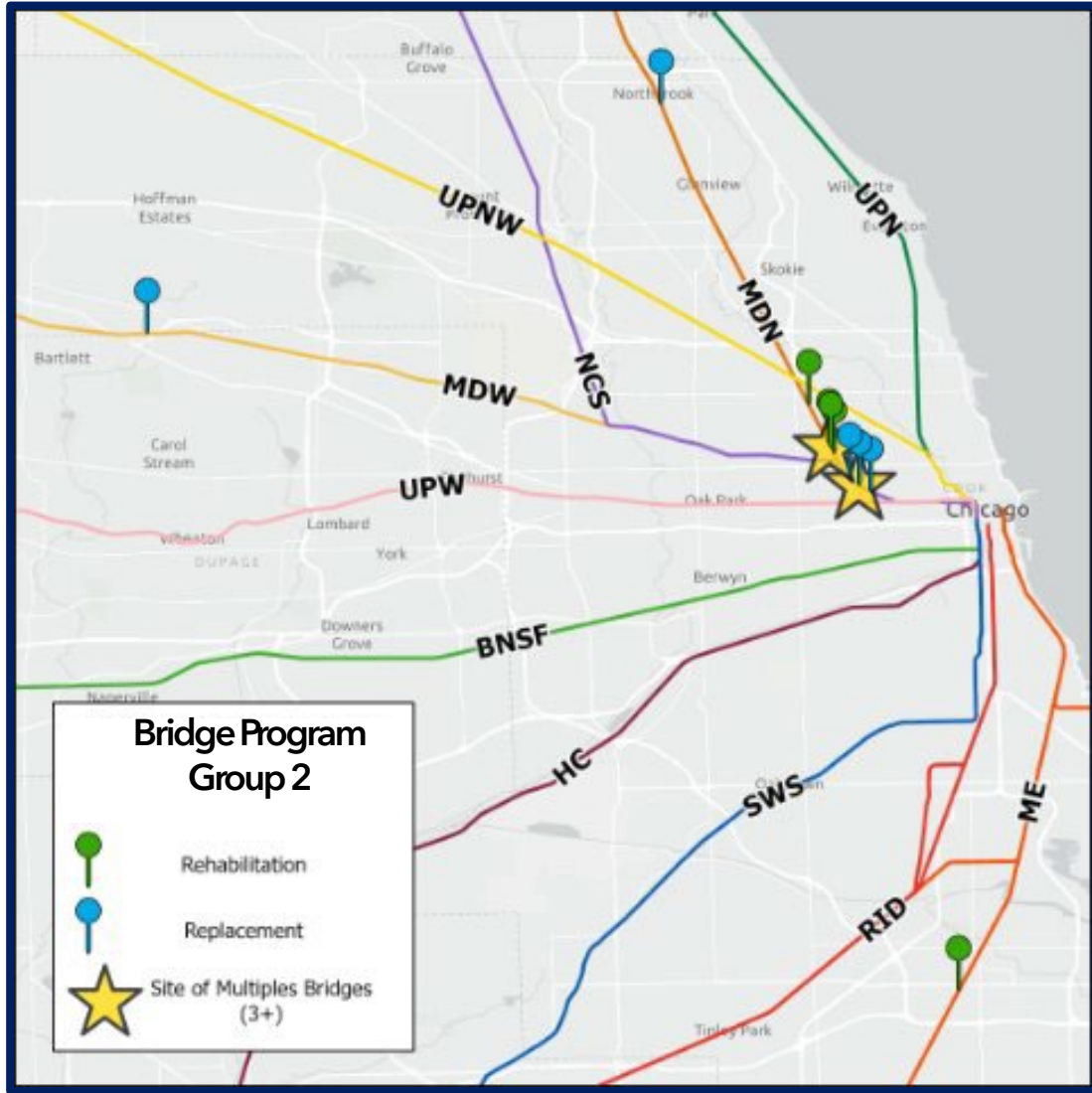
Rehabilitating 5 and replacing 5 bridges

PE/NEPA Cost Estimate: Approx. \$1M/ Bridge

- **GROUP 1-01 GRAYSLAKE REPLACEMENT**
- **GROUP 1-02 LIBERTYVILLE REPLACEMENT**
- **GROUP 1-03 CHICAGO REPLACEMENT**
- **GROUP 1-04 CHICAGO REPLACEMENT***
- **GROUP 1-05 CHICAGO REHABILITATION**
- **GROUP 1-06 CHICAGO REHABILITATION**
- **GROUP 1-07 CHICAGO REHABILITATION**
- **GROUP 1-08 NEW LENOX REHABILITATION**
- **GROUP 1-09 CHICAGO REHABILITATION**

* Two bridges at single location

BRIDGE PE/NEPA STATUS - GROUP 2



Rehabilitating 5 and replacing 5 bridges

PE/NEPA Cost Estimate: Approx. \$1M/ Bridge

- **GROUP 2-01 CHICAGO REPLACEMENT**
- **GROUP 2-02 CHICAGO REPLACEMENT**
- **GROUP 2-03 HANOVER PARK REPLACEMENT**
- **GROUP 2-04 GLENVIEW REPLACEMENT**
- **GROUP 2-05 BRISBANE REPLACEMENT**
- **GROUP 2-06 CHICAGO REHABILITATION**
- **GROUP 2-07 CHICAGO REHABILITATION**
- **GROUP 2-08 CHICAGO REHABILITATION**
- **GROUP 2-09 CHICAGO REHABILITATION**
- **GROUP 2-10 CHICAGO REHABILITATION**

BRIDGE PROGRAM – APPROACH TO CONSTRUCTION

Construction Packaging Strategy

Construction packaging will be based on:

- Timing of project phases and critical milestones
- Funding availability timeframes
- Specific bridge characteristics, including complexity

Industry Input Solicited During Preliminary Engineering

- Industry input welcome regarding packaging of construction projects
- Input regarding strategies for Construction Management also welcome

2026 STATION AND FACILITY CONSTRUCTION OPPORTUNITIES

Project	Construction Estimate
LaGrange Station	\$2-3M
ADA State of Good Repair (11 stations)	\$3-5M
Downtown Station Signage (Lasalle, Ogilvie & Millenium external signage)	\$2-3M
Olympia Fields Station and Parking	\$20-25M
59th 60th Street Station University of Chicago	\$75-80M
Grand/Cicero Station Elevator Replacement	\$3-4M
Harvey Transportation Center	\$65-70M
Homewood Substation Improvements	\$13-16M
Elgin Crew Facility	\$1M

DESIGN AND CONSTRUCTION MANAGEMENT OPPORTUNITIES

2026 MAJOR DESIGN OPPORTUNITIES

Project	Design Estimate
Bridge Design Blanket	\$30M
Traction Power Design Blanket	\$25M
Bridges PE/NEPA Group 1	\$10M
Bridges PE/NEPA Group 2	\$10M
Richton Park Station	\$4-5M
115th Kensington St Station	\$6-7M
Station & Parking Design Blanket	\$25M

BRIDGE DESIGN BLANKET (TASK) CONTRACT

- 5-year contract
- Up to 5 consultants
- **\$30 M** overall contract value

Scope:

- Preliminary Engineering and Final Design for various bridge projects
- Waterproofing
- Bridge condition reports, bridge type studies, bid sets for construction
- May include bridge program Group 3



RICHTON PARK STATION PRELIMINARY ENGINEERING

- Rehabilitation
- ADA compliance
- **\$4-5 M** estimated contract value



115TH ST KENSINGTON STATION PRELIMINARY ENGINEERING

- Rehabilitation
- ADA compliance
- Platform replacement
- Parking improvements
- **\$6-7 M** estimated contract value

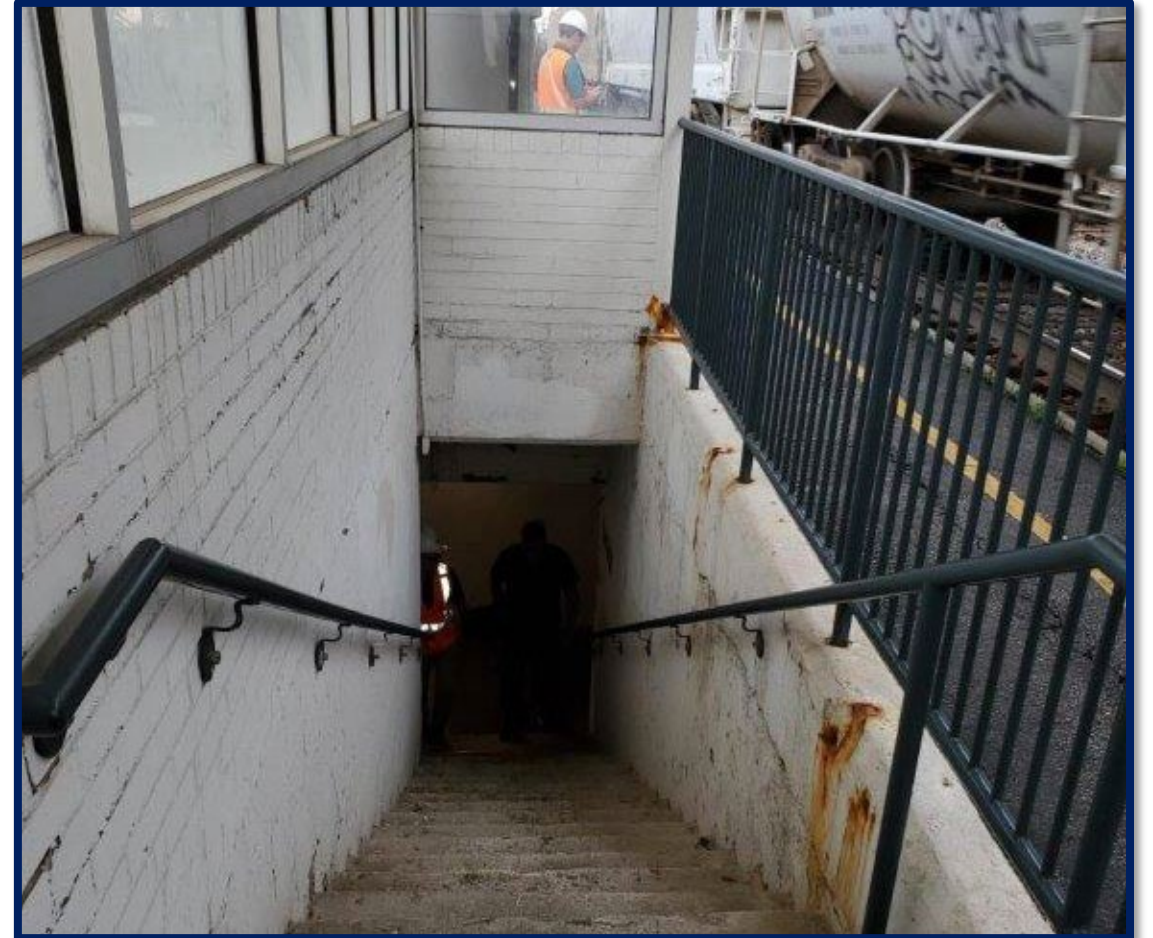


STATIONS & PARKING DESIGN BLANKET (TASK) CONTRACT

- 5-year task order contract
- **\$25 M** contract value

Potential Scope:

- Small to medium station improvements
- Canopy repairs and replacements
- Accessibility improvements
- Water mitigation



2026 CONSTRUCTION MANAGEMENT AND SUPPORT CONTRACT OPPORTUNITIES

Project	Contract Estimate
Bridge 86 – Auburn Park North Entrance CM	\$5-8M
Stations & Parking CM Blanket	\$24M
Civil & Structural CM Blanket	\$15.5M
Mechanical & Electrical CM Blanket	\$7.5M
Support Contract - Materials Engineering Inspection & Testing	\$5M

BRIDGE 86 AND 78TH ST ENTRANCE CONSTRUCTION MANAGEMENT

- Replace bridge abutments, retaining walls, and additional improvements including new second entrance to the Auburn Park Station
- **\$5-8 M** construction management cost

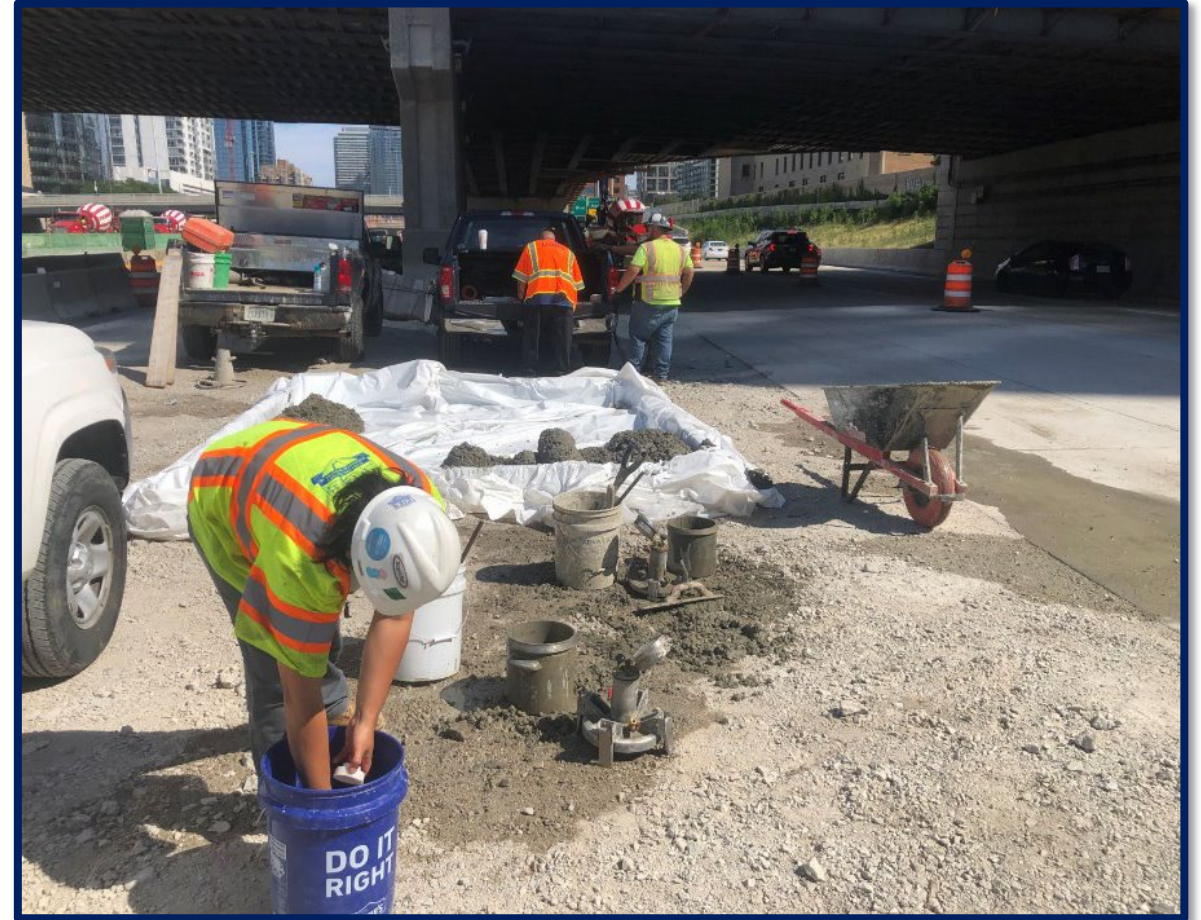


SUPPORT CONTRACT - MATERIALS ENGINEERING, INSPECTION, & TESTING BLANKET (TASK) CONTRACT

- 5-year task order blanket contract
- **\$5 M** contract value

Scope:

- Evaluate quality of materials in design and construction
- Provide recommendations for material procurement advancements
- Standardize technical specifications
- Provide Subject Matter Experts



WHAT SUCCESS LOOKS LIKE FOR YOU AND FOR METRA

Develop teaming to ensure the right skills



Include local expertise covering permitting, and proactive community engagement/communications



Quality for the quantity



Be ready!



HOW TO PARTICIPATE?

Visit Metra.com to:

- Register as a vendor on Metra's Procurement Portal to receive email notifications about the latest business opportunities and download solicitation documents
- View Metra's Annual Procurement Plan



**WE NEED YOUR SUPPORT FOR
INFRASTRUCTURE FUNDING**

Thank You

