

NRC Annual Conference

Hollywood, FL

Genesee & Wyoming Railroad Services Inc.



January 10, 2026

Prepared by: Kristine N. Storm





Thank You

Agenda

- 1. Overview**
- 2. Operations & Infrastructure**
- 3. Engineering Capital & Growth**
- 4. Engineering Grants**
- 5. Specialty Contract Services**
- 6. Mechanical Capital**
- 7. Supplier Partnership**

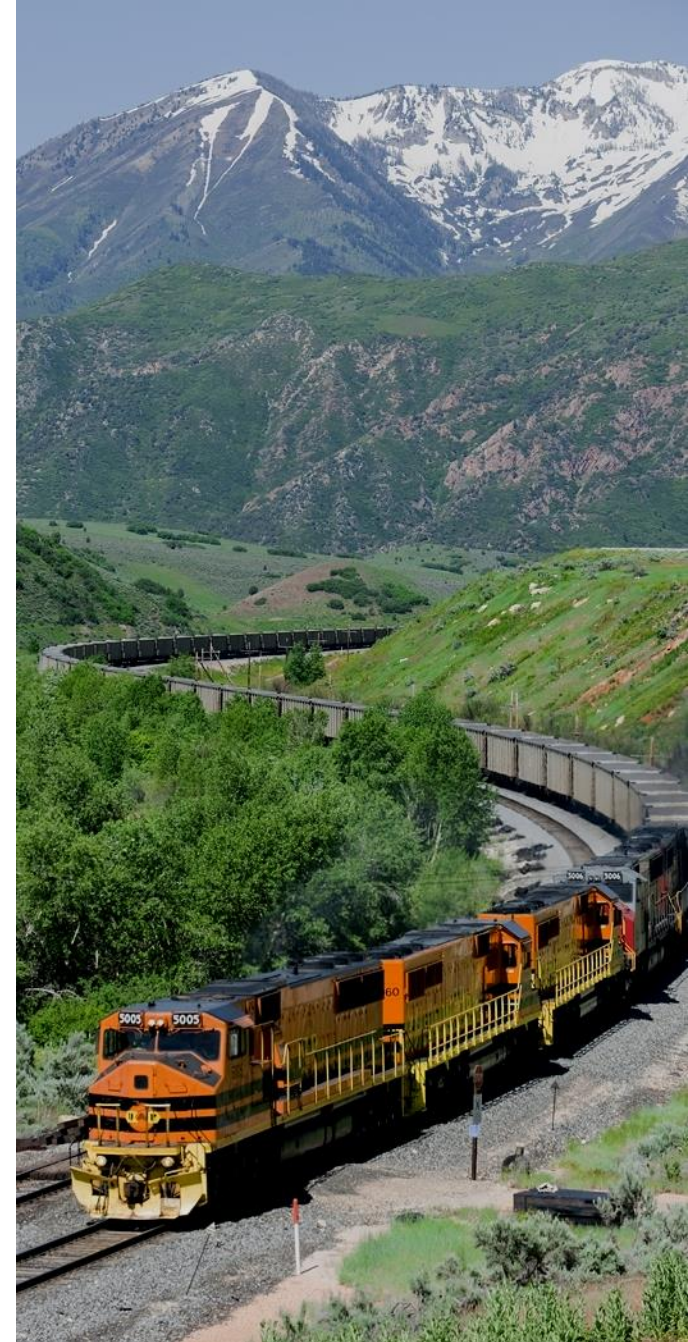




World-wide



- **Railroads:** 115 railroads with ~13,000 track miles
(90% North America; 10% Europe)
- **People:** 4,400
- **Customers:** 2,000
- **Equipment:** 1,200 locomotives
- **Carloads:** ~1.6 million annually



G&W North America – 2 Regions / 12 Districts



North America 2026

Capital & Growth Purchasing Timeline

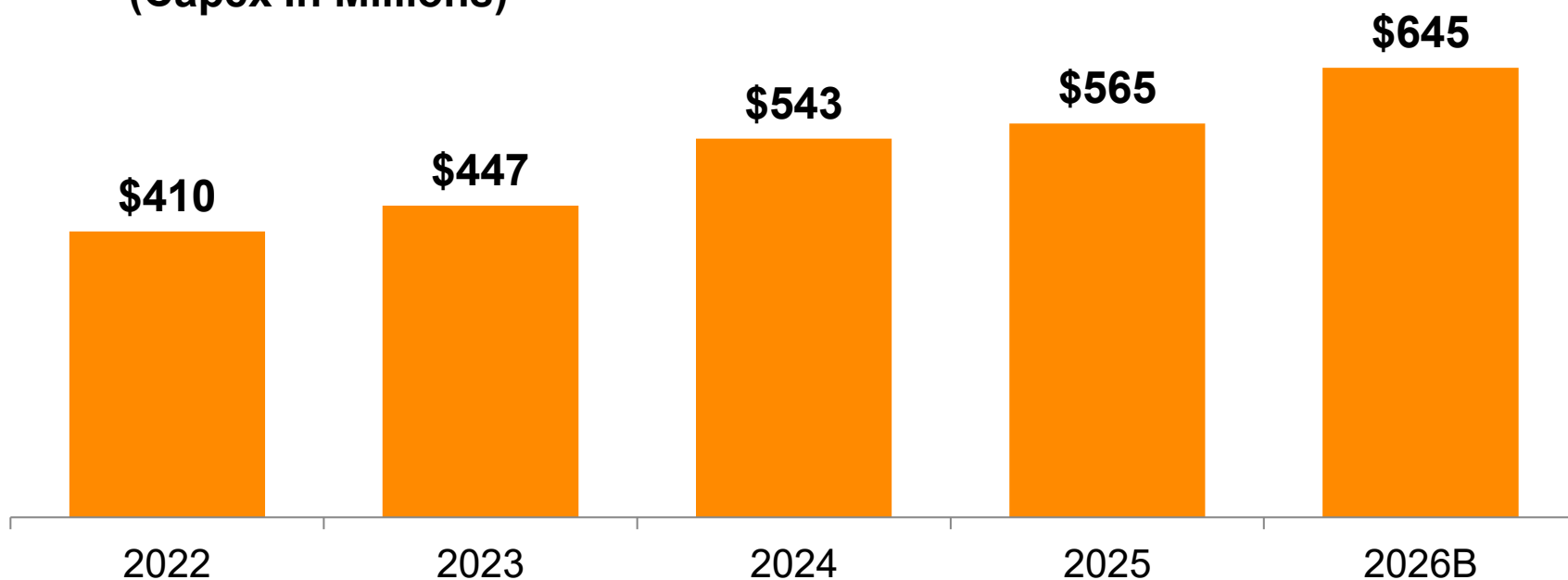
Department	Region	Sector	Funding	Timeline
Engineering	American	Track Materials & Labor	Maintenance Capex	Q4-2025
Engineering	American	Bridge Materials & Labor	Maintenance Capex	Q4-2025
Engineering	National	Track Materials & Labor	Maintenance Capex	Q1-2026
Engineering	National	Bridge Materials & Labor	Maintenance Capex	Q1-2026
Engineering	American	Track Materials & Labor	Growth Capex**	Q1/Q2-2026
Engineering	National	Track Materials & Labor	Growth Capex**	Q1/Q2-2026
Engineering	ALL	Vehicles	Maintenance Capex	Q4-2025
Engineering	ALL	Work Equipment	Maintenance Capex	Q1-2026
Mechanical	ALL	Locomotive Rebuilds	Maintenance Capex	Q2-2026

** Grant projects will bid upon obligation / executed grant agreement or pre-award authorities are approved. ***Anticipate many solicitations throughout the year.***

Respected by Our Customers & Stakeholders:

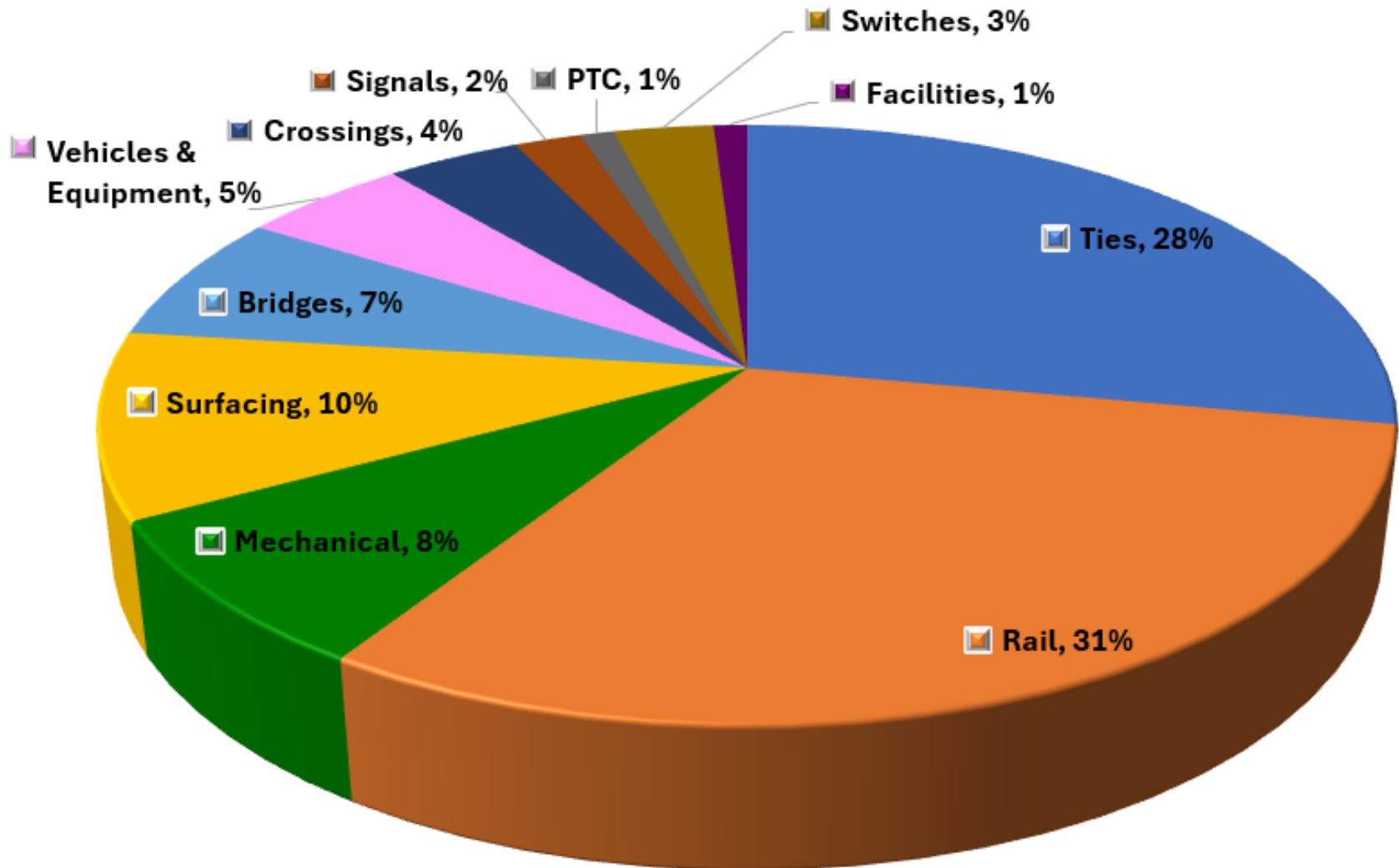
Capital Investment in Infrastructure

(Capex In Millions)



> \$1.7 billion invested in past 3 years

2026B Capital Spend Allocation: Engineering & Mechanical



What and how much does G&W Outsource *with a twist for 2026 capital solicitations:*

Engineering Design & Construction	100%
Cross & Switch Tie Installation**	99%
Surfacing**	85%
Turnouts Installation & Upgrades	100%
CWR & Jointed Rail Installation	100%
Crossing Rehabilitations	98%
Major Bridge Component Upgrades	75%
Signal Installation, Maintenance & Upgrades	90%
Civil, Earth & Subgrade Work	100%
Locomotive Overhauls	15%
Freight Car Repairs – RIP & LOR	60%
Derailment and Environmental Remediation	100%

** GW Production Gangs Dissolved in 2025



Impact of Weather on Railroad Infrastructure

Berkshire & Eastern Railroad (Pan Am Southern)

Washout repair MP395.8 in Buckland, Massachusetts





ENGINEERING CAPITAL 2025 Project Highlights



2025 Project Highlight – RCPE RAISE



\$84M Federally Funded Project

Contractors: RJ Corman, Continental, Martinus, CDI

Scope:

- **930,000** LF 136# Rail
- **80,000** Ties
- **11** Turnouts
- **116** Crossings
- **121** Bridge Upgrades
- **163** TM Surfacing
- **4** Combination Defect Detectors



2025 Project Highlight – RCPE RAISE



2025 Project Highlights – PSAP AGP Growth Project

\$51M railroad funded capacity and rehabilitation project to support increased traffic from AGP on PSAP in Washington

Scope:

- 200,000 LF rail replacement
- 24 turnouts renewed
- 43 grade crossing surfaces
- 3,000 TF roadbed stabilization
- 680 joints eliminated
- 16,000 ties installed
- 650 switch ties
- 45 miles surfacing
- 2 new sidings - 16,000 feet of capacity
- 1,600' Track Extension
- Bridge upgrades

Contractors:

- **Boyer** – Track rehabilitation M/L
- **Rognlins & Railworks** – Civil and new track construction
- **Martinus** – Bridge construction
- **GFT** - Engineering



Crossing Upgrade MP 0.95 – 1.27 Centralia



Turnout and Rail Replacement

AUDIENCE QUESTION???



ENGINEERING CAPITAL 2026



2026B North American Capital & Growth Scopes

<u>Program</u>	<u>Maintenance Capital - Total (Units)</u>	<u>Growth Capital – Total (Units)</u>	<u>TOTALS</u>
Ties	675,000	225,000	900,000
Rail (Lineal Miles)	50	410 (136 is KRR CRISI)	460
Surfacing (Track Miles)	1,250	850	2,100
Turnouts	25	160	185
Bridges	\$27 million	\$8 million	\$35 million
Grade Crossing Rehabs	50+	300+	350+
Signals (Crossing Warning Devices)	-	100+	100+
New Track (Track Feet)	-	32,000 TF (4 sidings, 3 yard expansion)	32,000 TF

ENGINEERING GROWTH & GRANT OVERVIEW 2026



G&W NATIONAL Region

National Region Growth Projects Geographic Distribution

Division	Number of Projects	% By Spend
Canada	4	12%
Great Lakes	20	20%
Northeast	15	26%
Ohio Valley	14	16%
Pan Am Southern	5	11%
Upper Midwest	29	15%
Grand Total	87	

National Region Growth Projects Quantities of Work

Division	Crossing Surfaces (Each)	Rail (LF)	Ties (Each)	Turnouts (Each)	Bridges (Each)	AWD Upgrade Locations (Each)	Surface (TM)	Ballast (Tons)	Defect Detectors (Each)
Canada	17	277,455	97,575	15	22	14	130	50,250	
Great Lakes	51	151,170	109,437	44	22	27	147	43,019	23
Northeast	33	371,951	74,207	71	27		119	36,420	6
Ohio Valley	47	154,176	47,323	3	10	34	78	12,500	26
Pan Am Southern	17	185,900	4,913	19	1	5	8	2,757	7
Upper Midwest	42	166,587	80,344	13	1	30	117	9,123	1
Grand Total	207	1,307,239	413,799	165	83	110	599	154,069	63

National Region

2026 Large Growth Project Overview

Division	Railroad	Funding	Project Name	States	Scope of Work
Ohio Valley	CFE	Federal CRISI	Chicago, Ft. Wayne & Eastern Railroad Supply Chain Equipment Project	Indiana	Purchase 26 car 80,000 LF capacity CWR Train and 75 solar dump ballast cars
Upper Midwest	TPWR	Federal CRISI	Upgrading a Critical Indiana-Illinois Rail Corridor	Indiana Illinois	Installation of 57,000 ties, ballast and surfacing. Indiana MP0-MP38 and Illinois MP62-109. Installation of 13,250 track feet of siding capacity at Effner and Hoosier Lift.
PAS	PAS	Federal CRISI	New England Tri-State Rail & Safety Upgrade Project	Massachusetts Vermont Connecticut	FML - 40,400 LF OOF Rail, 39,600 LF curve patch rail, 5 crossings, signal upgrades, 3 defect detectors, slope stability, 10 turnouts. Waterbury Sub - 12 crossings, trespassing mitigation, 20 switch ties, 92 open deck bridge ties, 4913 ties, ballast & surfacing, bolt tightening, joint elimination. East Deerfield - 8500 LF rail, 1000 ties, ballast & surfacing, 19 turnouts, construction 700 TF hump lead to R4, 1 crossing.
Northeast	NECR PWRZ	Federal CRISI	New England Bi-State Shortline Upgrade Project	Vermont Rhode Island	NECR Italy Yard - Upgrade 17 turnouts, 320 switch ties, 4000 ties, ballast & surfacing, 2200 LF rail. Oil water separator at St. Albans engine house. Burlington Sub - 5700 ties, ballast & surfacing, 60 switch ties, 5808 LF rail. East Alburg Trestle - 339 bridge ties, replace piles, caps, stringers. PWRZ Freight Main - 6695 LF rail, 7896 ties, ballast & surfacing. E Providence - 41,712 LF rail, 4750 ties, ballast & surfacing, remove 6 turnouts, relocate 5 turnouts, upgrade 4 turnouts, 200 switch ties, upgrade 13 crossings, remove 6 crossings. Valley Falls - 1368 ties, ballast & surfacing, upgrade 9 turnouts, remove 2 turnouts.
Northeast	NECR	Federal CRISI	FY17 Vermonter Amtrak Safety Project for Passenger and Freight Rail Service	Vermont	Replacement of 1 culvert, rehabilitation of 2 culverts, rock face geotechnical improvements at 8 locations, installation of slide fences at 2 locations, bank slope and erosion repair at 2 locations, and installation of equipment defect detectors at 5 locations
Upper Midwest	MQT	Federal CRISI	Leveraging Ludington	Michigan	Mainline - 60,370 LF CWR, 53,245 ties, ballast & surfacing, 7 crossings Ludington Yard - 83,280 LF rail, 2558 ties, Oxy Lead upgrades.
Great Lakes	BPRR	Federal CRISI	Rebuilding Western Pennsylvania	Pennsylvania	Replacement of 80,000 LF curve worn rail, 30,725 ties, 100 switch ties, 34 TM production undercutting, canopy/brush cutting, crossing rehabilitation, hot box detectors, wayside lubricators.
Great Lakes	CUOH	Federal CRISI	Panhandle Upgrade and Capacity Project in Central Ohio	Ohio	Newark Yard - Reconstruct 10,415', 2 turnouts, relocate 3 turnouts, realign wye. Newark Shop - Replace 4 turnouts, improve 3000' track, service facility updates including stormwater, spill prevention, fuel, lighting, car shop upgrades. Cambridge Sub - 13,200 ties, ballast & surfacing. Rehabilitate 3 turnouts, brushcutting 24 miles, 2 defect detectors. C&N Sub - Install 3200' rail, 2010 ties, undercut 38,500 TF, upgrade 7 switches, eliminate 252 joints, brushcutting 31 miles, 2 defect detectors. Trespasser mitigation - fencing and remote cameras
Northeast	SLAR	Federal CRISI	Tri-State Regional Rail Upgrade Project	Vermont New Hampshire Maine	Rail Replacement 192,455 LF CWR, 3,575 Ties, 6.5 TM ballast & surfacing, 3 grade crossing rehabilitations, 11 turnouts

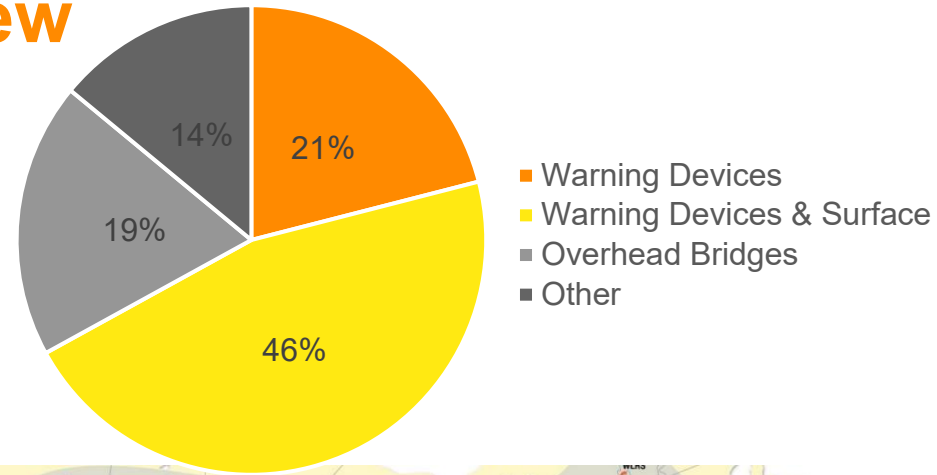
American Region

2026 Large Growth Project Overview

Division	Railroad	Funding	Project Name	States	Scope of Work
Pacific	AZER	Federal CRISI	Eastern Arizona Rail Safety, Efficiency, and Resiliency Project	Arizona	Replace 340,000 LF of rail, install four turnouts, and rehabilitate three timber bridges. Surface 36 TM, place 7,000 tons of new ballast, and upgrade approximately 300 TF of crossings. Install one hotbox detector, complete brush cutting, and retrofit two firefighting tank cars within the project limits.
Pacific	ARZC	Federal CRISI	Desert Rail Infrastructure Improvement Project	California	Replace 377,280 LF of rail, surface 36 miles of track, and install 7,200 tons of new ballast. Upgrade eight turnouts, rehabilitate 128 track feet of crossings, and install three rail lubricators. This work completes the track rehabilitation program for the full 69-mile ARZC corridor, improving reliability and supporting future traffic demand.
Southwest	DGNO	Federal CRISI	North Texas Rail Safety and Efficiency Project	Texas	The DGNO will replace 227,040 LF of rail, surface 21.5 TM, and add 6,450 NT of ballast. The scope also includes upgrading three turnouts, rehabilitating 224 TF of rail seal crossings and 942.5 TF of concrete crossings, installing three rail lubricators, and modernizing 14 signal crossing locations. These upgrades will enhance safety, reliability, and freight capacity along the DGNO mainline.
Southwest	KRR	Federal CRISI	Kiamichi Tri-State Freight Rail Improvement Project Phase 2	Oklahoma Arkansas Texas	The project includes replacement of approximately 76 miles of rail with 115lb. CWR, surfacing 76+ miles of track, and installation of 31 new turnouts across the Ashdown, Hope, and Paris Subdivisions. Resurfacing 114 crossings, upgrading 10 crossing signal locations, and installing 10 rail lubricators. These improvements will modernize the corridor, double allowable train speeds, and significantly reduce derailments and maintenance needs. The project will also enhance freight capacity and economic opportunities for rural communities served by KRR.
Northeast	EARY	Federal CRISI	ALDOT Blackbelt and Central Alabama Freight Rail Improvement Project	Alabama	Replace ~98,400 LF of rail, install 5,800 ties, upgrade 636 TF of crossing surfaces, and add 4 new turnouts. Also, construction of new sidings between MP 469.64 and MP 470.72, placement of 2,300 TN of ballast, and installation of 3 new rail lubricators.

Public Projects Overview

- Includes outside funded grade crossing surface and warning device projects, highway and road projects, overhead bridges, and any other third-party construction on railroad property
- \$135M total project value
- Public project statistics**
 - 431 total active projects
 - 27 surface only
 - 50 grade crossing warning device upgrade/installation
 - 78 surface & warning devices
- Bid packages are advertised by geographically aligned General Engineering Consultants

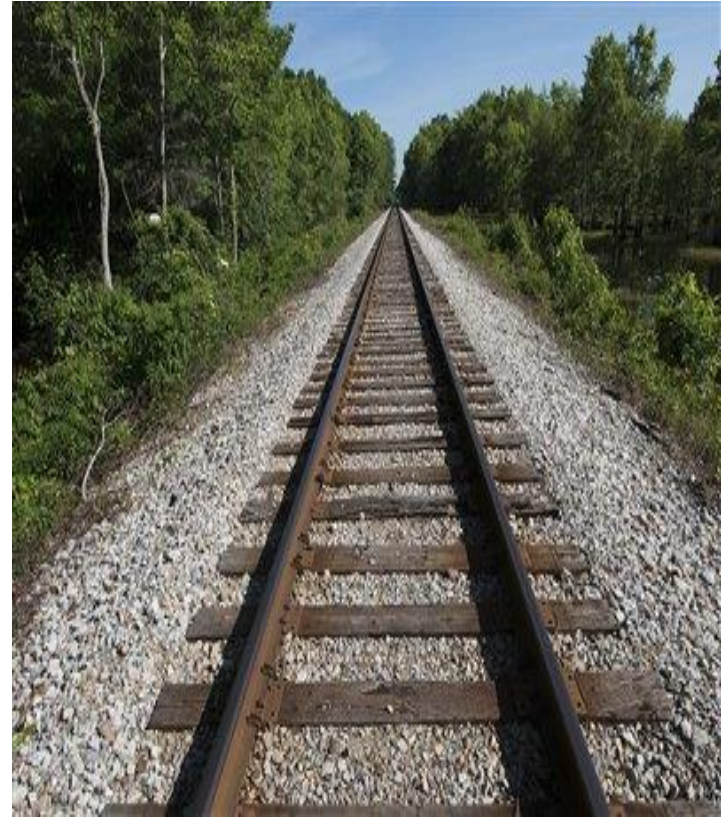


OTHER ENGINEERING SERVICES 2026



North American 2026 Specialty Engineering Services

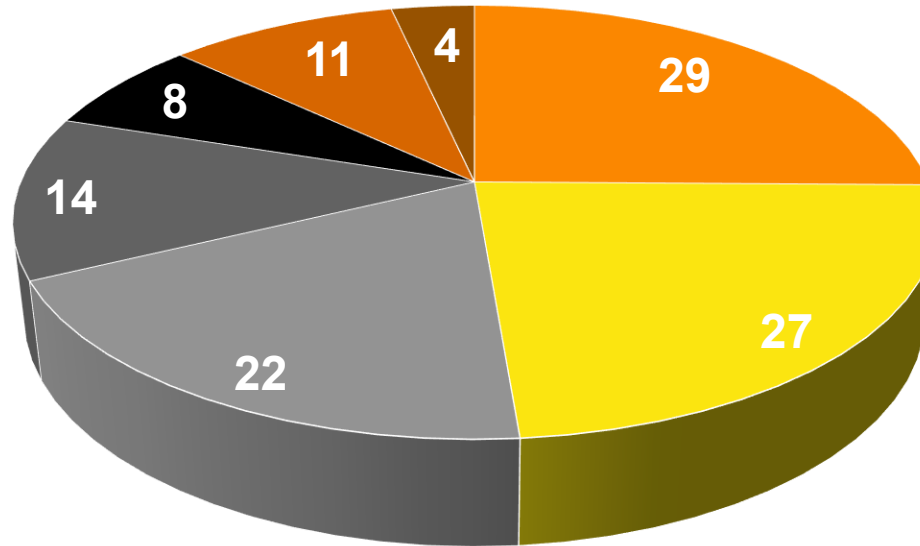
- Rail Flaw Detection: 16,480 TM's
- Geometry Testing: 20,042 TM's
- Tie Testing: 4,500 TM's (US only)
- Vegetation Control: 16,000 TM's
- Upfitted Vehicles: 127 each
- Derailment Services & Emergency Response
- Environmental Services
- Maintenance Welding
- Released Rail / OTM Salvage / Scrap
- Support for Production
 - Material Distribution, Tie & OTM clean up, crossing support, etc
- Flagging



North American 2026 Vehicle Outlook

Capital Replacement – 115 Vehicles in total of which 88 are upfitted

2026 Vehicle Capital



- Track Inspector (29)
- Non-Upfitted Standard (27)
- Section/Grapples(22)
- Signal Maintainer (14)
- Mechanical/Welder(8)
- Roadmaster (11)
- Dump Trucks (4)



MECHANICAL CAPITAL Overview 2026



Locomotive Fleet & Overhauls

- Total locomotive fleet count for G&W is 1,050 units
 - 694 of 4 axles
 - 821 EMD's
 - 356 of 6 axles
 - 198 GE's
 - 18 of Gensets
 - 31 other
- 2025 – 40 rebuilds (full & partial)
 - 3 units, Tier 4 purchase
 - 27 units, GE Dash 9-44CW purchase
 - 8 units, EPA Tier 0+ Upgrade Kits
- 2026 – 28 rebuilds (full & partial)
 - 5 units, Tier 4 grant
 - 9 units, EPA Tier 0+ Upgrade Kits
 - 0 purchases



PTC Status Update

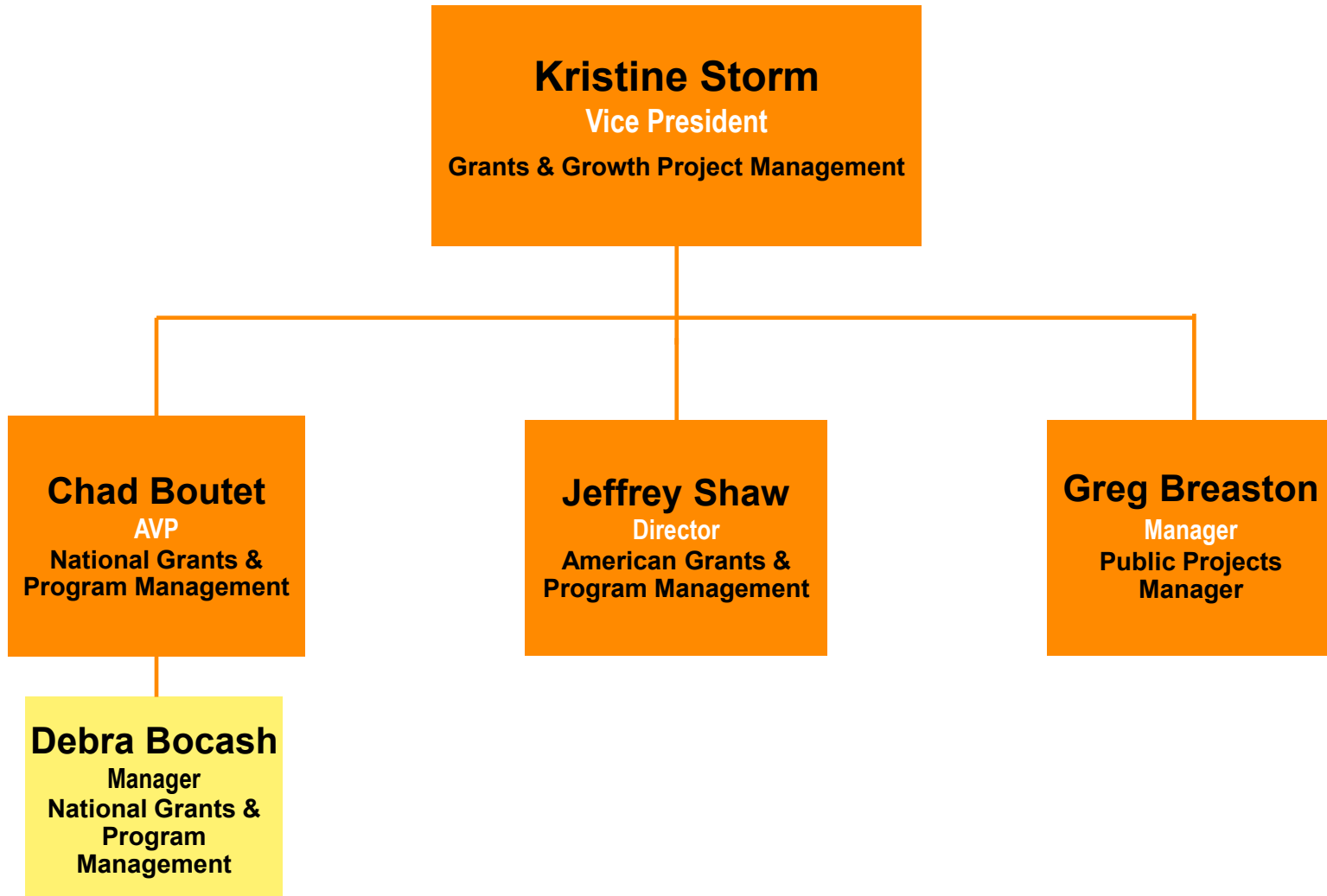
- 12 additional PTC installations scheduled for 2026
- GW operates three types of PTC – I-ETMS, ACSES, E-ATC
- 157 locomotives equipped with PTC across GW network
- 20 GW railroads operate PTC as tenants (one addition planned for 2026)
- Interoperable with UP, BNSF, NS, CSX, CN, CPKC, TRE, KC Terminal, Amtrak, MBTA and Metro North RR
- 2026 Capital budget: \$3M

Information Technology Improvements

- Engineering Software currently being utilized by G&W
 - Electronic Track Inspection
 - Electronic Signal Inspection
 - Electronic Bridge Inspection
 - **Drone Utilization**
 - Track testing: rail, geometry & ties
- GIS integration b/w real estate, engineering
- Witronix, onboard locomotive intel
- DTW – Digital Track Warrant
- LiDAR – Cordel unit installed on geometry truck in 2025 for clearance measurements



G&W Grants & Growth Project Mgt Organization



Region / Railroad Point of Contacts

Grant & Growth Project Mgt:

- Kristine Storm, Chad Boutet, Jeffrey Shaw, Debra Bocash, Greg Breaston

Purchasing:

- Jeremy Hazelett, Mark Koenig, Matt Seinfeld, Abby Morris, Brandon Kosco, William Whitcomb

Regional VP & AVP's of Engineering:

- **American Region** – Juan Covarrubias
 - Pacific District – Jason Sims
 - Central District – Michael Kellar
 - Southwest – Marcus Campione
 - Gulf & Coastal – Rob Myer
- **National Region** – Todd Dragland
 - Canada Region – Andre Lapalme
 - Northeast & PAS – Brian Cutler
 - Great Lakes, Ohio & Upper Midwest – Jared Rishel

Regional VP & AVP's of Mechanical:

- **American Region** – Brad Landers
 - Pacific & Central District – Jonas Goodman
 - Southwest – Don Strange
 - Gulf, Coastal & Rail Services – Kris Kempel
- **National Region** – Brian Myers
 - Canada Region – Murray MacBeth
 - Northeast & PAS – Chad Gibson
 - Great Lakes, Ohio & Upper Midwest – Scott Wentz & Dale Bennett

Supplier / Contractor Partnership

- Matching up the footprint, serving those railroads within your reach while not compromising SAFETY, quality or price
- Efficiencies, in and out
- Safety Program to the G&W standard
- Innovative partnership on improving the infrastructure
- Extension to our resources



Doing Business with G&W

- Vendors must be set up in D365 to receive Purchase Orders and for Invoice processing.
- Contract or MSA must be in place prior to coming on property.
- Provide Certificate of Insurance that meets all G & W insurance requirements.
- Register with ISN and meet all G & W requirements including but not limited to;
 - CFR 219 & 243 requirements.
 - CFR 214 RWP & Bridge Fall Protection requirements (RailPros)
 - CFR 246 signal requirements (on hold)
 - CFR 237 bridge requirements
 - EHS Program, Contractor Safety programs, OSHA and G & W requirements.
- TWIC cards and/or site-specific training as required by facility.

Challenges Ahead

- Ballast Distribution
 - Over 500,000 tons of ballast to be sourced and distributed across the network
 - Challenges with availability of ballast cars, loading & unloading cycle times, and cost of moving ballast and equipment across C1 railroads between G&W properties
- Capacity Constraints
 - Numerous CRISI grants reaching obligation late 2025 and early 2026 on G&W and numerous other short line and regional railroads, all moving to construction in 2026
 - G&W rail program on growth projects exceeds 3 C1 railroads programs combined
 - Available work opportunities for production rail installation is expected to exceed industry contractor capacity once projects ramp up
 - Significant OTM needs starting in 2026: 1.5M plates, 1.5M+ anchors, 4M+ spikes
 - Logistics needed to support production rail renewal – shipping, stockpiling, unloading, OTM distribution, scrap pickup

Thank you to our 2025 engineering contractors!

A&B RAIL SERVICES LTD.
AG HACKLE CONSTRUCTION LLC
A-G-E CORPORATION
ALFRED BENESCH & COMPANY
ALL AMERICAN TRACK TAMPING INC.
ALL STATES CONSTRUCTION INC
AMERICAN RAIL ENGINEERS CORP
AMERICAN TRACK GENERATIONS
AMERITRACK RAIL
AMTRAC RAILROAD CONTRACTORS OF MD INC
ASPLUNDH
ASTCO CONSTRUCTION INC.
AVL CONSTRUCTION GROUP INC.
BADGER DAYLIGHTING CORP
BAZIN BROTHERS TRUCKING INC
BOYER RAIL CONSTRUCTION LLC
BRIDGEWELL SUSTAINABLE SOLUTIONS LLC
BUDDY'S SAND & GRAVEL
BULLOCK CONSTRUCTION INC
BUNDRICK RAIL SERVICES LLC
C.D.L. ELECTRIC CO., INC.
C.E.R.V.O.
CHA CONSULTING INC
CHOCTAW CONSTRUCTION SERVICES LLC
CIVIL DESIGN INC
CNR INDUSTRIAL SERVICES INC
CNR TRUCKING & CATTLE COMPANY
COLLIERS ENGINEERING & DESIGN
CONSTRUCTION SOLUTIONS & CONSULTING
CONTINENTAL RAILS INC
COOPER RAIL SERVICE, INC.
COUILLARD CONSTRUCTION LIMITÉE
COX'S LAWN & VEGETATION SERVICE INC
CR CONSTRUCTION COMPANY
CUNA RAILWAY INNOVATION INC
CW & W CONTRACTORS INC
D R DAVIES CONTRACTOR, LLC
DALMOLIN EXCAVATING, INC
DIAMONDBACK SIGNAL LLC
DRILL TECH DRILLING & SHORING INC
DRIVEN ENGINEERING INC
D'URSO LANDCAPING & CONSTRUCTION
E M H & T
E80 PLUS CONSTRUCTORS LLC
ECC CORPORATION
ENGINEERS CONSTRUCTION INC
ENGRAIS NEAULT INC.
ENTREPRISES RENE VINCENT (LES)
EQUIPEMENTS FORCIER LTEE

EXCAVATIONS REAL BARRETTE INC.
FAIR DERMODY CONSULTING ENGINEERS
FAITH TECHNOLOGIES INC
FERROSAFE LLC
FERRO-WORKZ INC
FRONTIER RAILROAD SERVICES LLC
GENESIS RAIL SERVICES II LLC
GFL ENVIRONMENTAL SERVICES, INC.
GHD CONSULTANTS LTEE
GRACE RAILROAD CONTRACTORS, INC.
GROUPE PELLETIER ENTRETIEN
H & S CONSTRUCTION RAILROAD & SALVAGE
HAMILTON CONSTRUCTION CO
HARBOUR CONTRACTORS INC
HATCH LTEE
HD MACHINES LLC
HDR ENGINEERING, INC.
HILES EXCAVATING LLC
HOLLAND LP
HYDRO GREEN EROSION CONTROL LLC
INDUSTRIAL RAILWAYS COMPANY
ING CIVIL INC
INTERRAIL SIGNAL INCORPORATED
J. MASON CONTRACTING LTD.
JCT ENTERPRISE
JOHN HAWKINS TELCOM INC
ATLAS RAIL CONSTRUCTION LLC
JOHNSON & PACE INC
JONES CONSTRUCTION LLC
K JOHNSON FARM LLC
KLN RAIL MAINTENANCE
KENNEDY RAILROAD SERVICES
KOPPERS RAILROAD STRUCTURES
TCR RAIL SYSTEMS
LAKES & RIVERS CONTRACTING INC
LES DEBROUSSAILLEURS GSL INC.
LES ENTREPRISES RAYMOND DENIS 90
LEVEL IT EXCAVATING LLC
LEWIS COUNTY-PUBLIC WORKS
LORAM MAINTENANCE OF WAY INC.
LORAM MAINTENANCE OF WAY LTD.
LORAM TECHNOLOGIES INC
LRL CONSTRUCTION CO
MANSOUR CANADIAN RAIL INC
MARTINUS BOTTOM LINE LLC
MAURECON INC
MIDSOUTH RAILROAD SERVICE INC
MIDWEST MO CONTRACTORS LLC
MJ TRACK WORKS INC

MVC OCEAN INC
N E BRIDGE CONTRACTORS INC
NATION CONSTRUCTION LLC
NATIONAL RAILROAD SAFETY SERVICES
NATIONAL SALVAGE & SERVICE
NATIONAL SIGNAL CORPORATION
NATIONAL SIGNAL MAINTENANCE CORP
NAYLOR SERVICES INC.
NBM RAIL SERVICES INC
NEW ENGLAND RIGHT OF WAY VEGETATION
NEXXT RAIL LLC
NORDCO INC.
NORDCO RAIL SERVICES LLC
NORTHERN PLAINS RAIL SERVICES
NORTHERN RAIL SERVICES INC
NPA SPECIALTY EQUIPMENT
OLSSON, INC
OMNI RAIL INC.
ONE RAIL GROUP LLC
OWS RAILROAD MAINTENANCE AND CONS
PACIFIC RAILWAY ENTERPRISES, INC
PARTUM CONSULTING INC
PAVAGES LAFLEUR ET FILS INC.
PCL CIVIL CONSTRUCTORS
PLASSER AMERICAN CORPORATION
PNR RAILWORKS (TRACK DEPARTMENT)
PNR RAILWORKS QUEBEC INC
PNR RAILWORKS QUEBEC INC.
POINTER SMITH CONTRACTING
PREWETT ENTERPRISES, INC
PROFESSIONAL MARINE CONSULTING
PROGRESS RAIL SERVICES
R.G. JOHNSON COMPANY, INC
RA FILSKOV & SONS
RAILROAD CONSTRUCTORS INC
RAILROAD SIGNAL SERVICES
RAILWAY FLAGGING SERVICES INC
RAILWAY SIGNAL CONSTRUCTION INC
RAILWORKS TRACK SERVICES, INC.
RAILWORKS TRACK SYSTEMS, INC.
RBT INC.
RICK FRANKLIN CORPORATION
RJ CORMAN RAILROAD SERVICES, LLC
ROBIN HECKEL LLC DBA H&H ENTERPRISE
ROGNLIN'S INC.
ROSE CITY RAIL CONSTRUCTION LLC
ROXBORO EXCAVATION INC
RTC RAIL SOLUTIONS LTD.
RUSSEL CONTRACTING INC.

SIMMONS RAILROAD GROUP LLC
SOUTHWORKS CONSTRUCTION, LLC
SPERRY RAIL SERVICE
STACY AND WITBECK
STEVEN D BURNOR
STX CORPORATION
SWANK CONSTRUCTION
T.L. WALLACE CONSTRUCTION, INC
TEC ASSOCIATES
THOMAS W WISER, PE
TOPLINE HDZ LLC
TN TRACK SERVICES INC
TRAC-WORK INC
TRAK-TIME, INC.
TRANSYSTEMS CORPORATION
TRC COMPANIES INC DBA TRC
UNIVERSAL RAIL ATLANTIC LTD.
US TRACKWORKS LLC
VAL CONSTRUCTION
VAL SERVICES & CONSULTATION
VISION INDUSTRIAL SERVICES LLC
VORST PAVING INC
VORST RAIL SERVICES LLC
WATECH SERVICES INC
WILSON & COMPANY
WIND RIVER CONSTRUCTION
WINSTON CONTRACTING LLC
WINTROW CONSTRUCTION
WJ RIEGEL RAIL SOLUTIONS, LLC
X RAIL INC.
XORAIL
ZA CONSTRUCTION LLC
ZEMBA BROS., INC.
ZEVIS LLC
OMAHA TRACK EQUIPMENT LLC
SKYMARK REFUELERS
MIDWAY FORD TRUCK CENTER INC
CUSTOM TRUCK
DUTRO FORD LINCOLN INC.
BROWN INDUSTRIES LLC
MORRISON METALWELD CORP.
MOUNTAIN STATES CONTRACTING
MUSSELMAN AND HALL
S.W. WEEKS CONSTRUCTION LTD.
SARATOGA RAILROAD ENGINEERING PC
SIGNALETIK INC.

AUDIENCE QUESTION???



A nighttime photograph of a city street. In the background, a tall building is illuminated with blue lights and has the word "VYSTAR" visible on its facade. In the foreground, a dark-colored car is parked on the street, its rear lights glowing. The overall scene is dark, with the city lights providing the primary illumination.

[IT'S ABOUT US]

FEATURING MIKE PETERSON

Any Questions?



