



M x V R A I L

# Accelerating Innovation through Collaboration

Kari Gonzales  
President & CEO, MxV Rail

MxV Rail  
350 Keeler Parkway  
Pueblo, CO 81001

A subsidiary of the  
Association of American Railroads



# PURPOSE BUILT



**MOMENTUM** **INSIGHT** **TEAMWORK** **RIGOR** **PURPOSE**

# PURPOSE BUILT

We believe that when railways operate with maximum safety, reliability and efficiency, they not only shape our everyday lives, they shape our future, too.

# We Are MxV Rail



**Proven Track Testing & Infrastructure Performance**  
**+20 operated**

MILES

SQUARE FEET



New test track infrastructure

Lab, office, training, warehouse, indoor

Possibilities

Professional

Engineering

maintenance space





The Impact of

# COLLABORATION





The Impact of  
Collaboration:

# TRAINING







The Impact of  
Collaboration:

# RESEARCH & TESTING

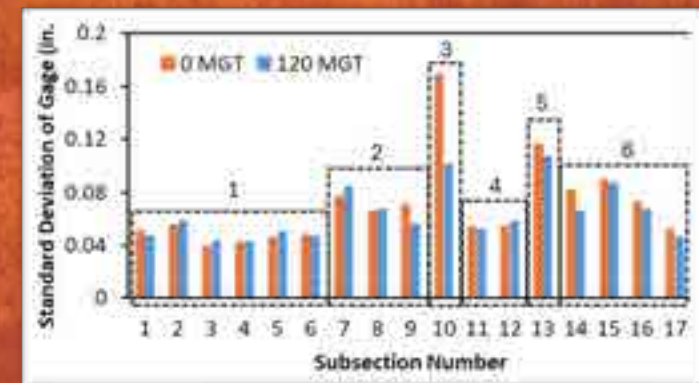




# Tie & Fastener Research



GLULAM TESTING



FAST® TESTING

- Industry-driven research and commercial programs use FAST® to assess tie and fastener designs.
- Results guide best practices for maintenance, inspection, and safe revenue service deployment.





The Impact of  
Collaboration:

# RESEARCH, TESTING & TECHNICAL STANDARDS



# Working with Suppliers and Railroads to Advance Wheel Impact Load Detection



<b>Technology Advancement</b>	Alternative WILDs introduced
<b>Standards Gap</b>	AAR Standard S-6101 addressed calibration and validation requirements for standard WILDs
<b>Research</b>	AAR funded research developed methodology to measure impact forces for various types of detectors
<b>Standards Updates</b>	Develop a more generalized specification to support technology progression and implementation
<b>Validation Testing</b>	Suppliers use methodology developed in the research program to validate alternative WILD systems





# Advancing Train Control and Automation



## Concept Development

Developed Restricted Speed Enforcement (RSE) concept using the onboard locomotive sensor platform to prevent collisions.

## Requirements Development

Defined RSE functional, performance, and interface requirements for PTC and sensor platform technology.

## Technology Demonstration

Demonstrate capability of low-cost commercial off-the-shelf (COTS) sensing technology

## Product Technology Assessment

Assessment of existing sensor product performance supported by railroads and existing sensor suppliers.

## Standards

Refinement of sensor platform requirements and publication as interoperable standards.

## Extensibility

Expansion of sensor platform requirements to support future sensor platform applications.

Interoperable Specifications  
[Complete]



Pre-Integration Sensor Testing  
[2026-2027]



Sensor Technology  
Proof-of-Concept  
[2025]



PTC Standards, Development, and Integration  
[2027-2030]



Integrated RSE Testing  
[2028-2030]



Production Deployment  
[2030-2031]





The Impact of  
Collaboration:

CONSULTING





# BNSF ODIN Enhancing Safety

**Locomotive –based track inspection system**

## **Controlled Environment Testing:**

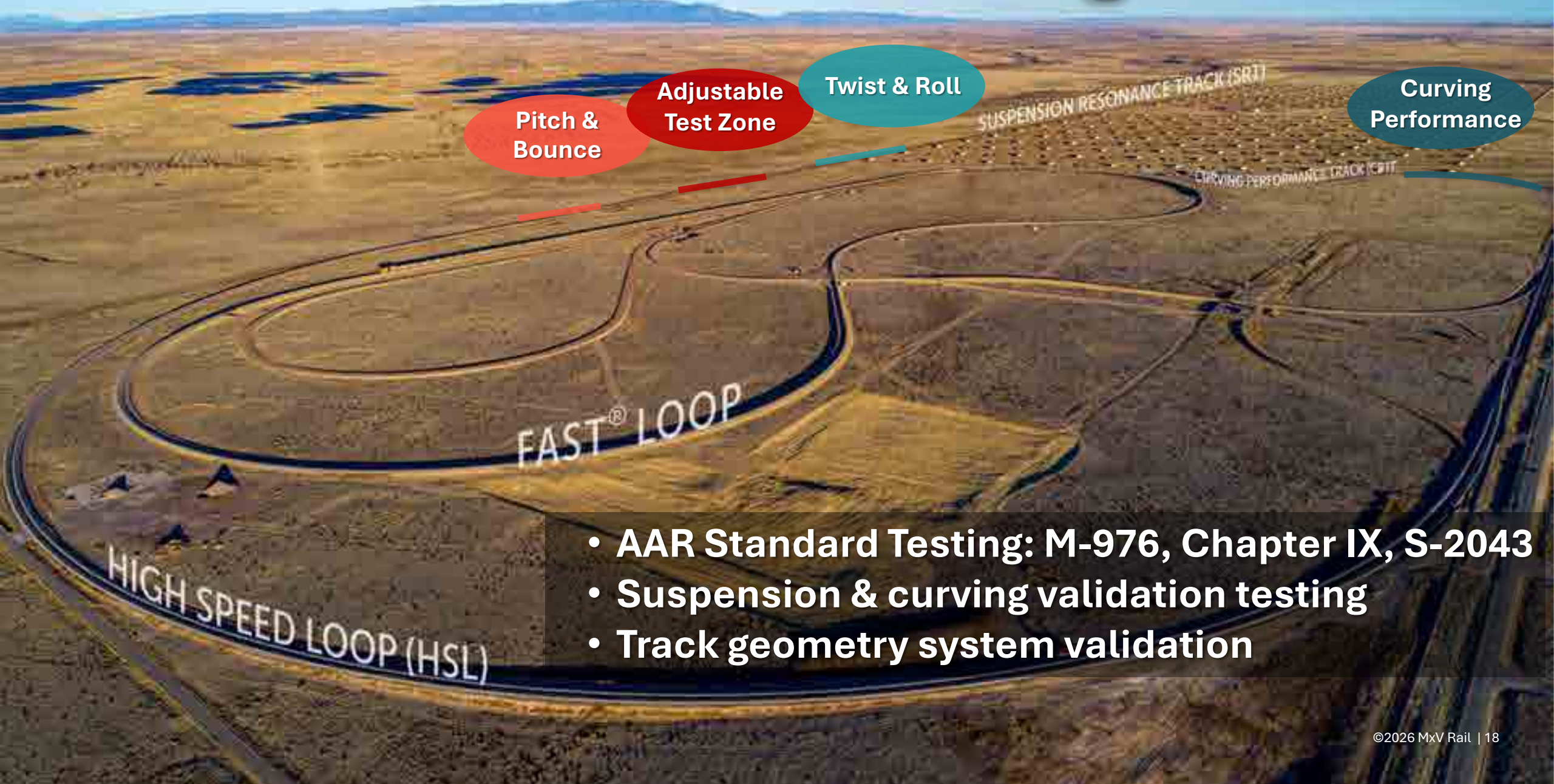
- **MxV Rail using BNSF equipped locomotive at FAST® to help improve algorithms**

## **Revenue Service: 65 ODIN units in operation**

- **Increased test coverage from ~500,000 to +5 million miles per year**
- **Data informing predictive maintenance**
- **Dedicated consist for both attended/unattended cars minimizes impact on velocity**



# Vehicle Performance Testing



- AAR Standard Testing: M-976, Chapter IX, S-2043
- Suspension & curving validation testing
- Track geometry system validation





The Impact of  
Collaboration:

# RESEARCH & WORKFORCE DEVELOPMENT







# LEARNING INSTITUTE

*Building Tomorrow's  
Rail Workforce — Together*

- Workforce Development
- Industry Knowledge
- Technical Skill Improvement



# University Grand Challenge Program



University of Missouri



**In-situ Rail Neutral Temperature (RNT) Measurements**

**MICHIGAN STATE**  
UNIVERSITY

**Hybrid Rail Inspection Approaches**



Southern Illinois University

**In-Motion Rail Base Inspection**



**In-Motion Wheel Inspection**

**UCSD**



ExpMech/NDT/SHM Lab

**3D Imaging of Internal Rail Flaws**



# Better. Together.