





Important Information

Please Read

This report is provided by Inspire Advisors, LLC for informational and illustrative purposes only. It includes values-based screening via the Inspire Impact Score™, hypothetical performance modeling, and Inspire-managed investment products.

This is **not personalized investment advice**, and results shown may not reflect actual portfolio outcomes. All investing involves risk, including the potential loss of principal.

The **Inspire Impact Score™** is a proprietary screening system based on Inspire's interpretation of biblical principles. Results may differ from other approaches.

Performance comparisons and projections in this report are hypothetical and subject to significant limitations. Please review the full disclosures at the end of this report before making any investment decisions.

For more information about Inspire's advisory services, values alignment methodology, and potential conflicts of interest, see Inspire's Form ADV at www.adviserinfo.sec.gov.

What This Report Covers

Step 1

Discover what you own



The first step in the journey towards biblically responsible investing is simply to discover the truth about what you own in your investment account.

Step 2

Explore your options



The Inspire Impact Report will help you see how biblically aligned investment options stack up against your current portfolio.

Step 3

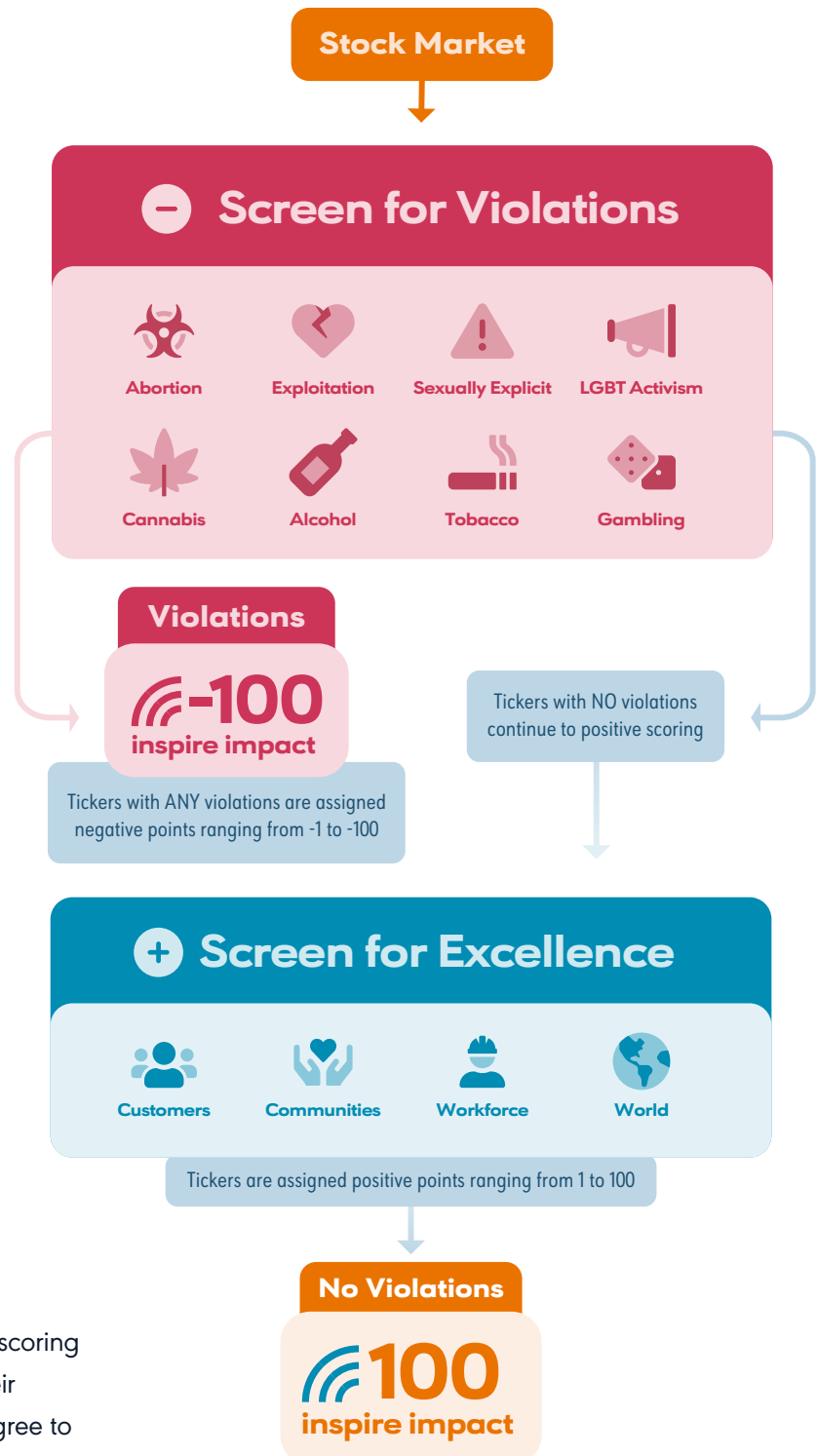
Impact in action



See how changing your investments can change the world! We'll show you the worldwide impact investors just like you can have through our Give50 program.

What is Faith-Based Investing?

Inspire Impact Score METHODOLOGY



Investing in inspiring companies aligned with biblical values offers investors a powerful way to make a positive impact on the world while also providing the potential for above average performance. **The Inspire Impact Score Methodology** is an objective, rules-based scoring system that rates companies based on their alignment with biblical values and the degree to which they operate as blessings to their customers, communities, workforce, and the world.



Step 1

Discover
what you own



Step 2

Explore
your options



Step 3

Impact
in action



2026 Impact



6,000

Bibles given to the
persecuted Church



3,333

Students reached for
the gospel



2,679

Potential babies spared
through pro-life counsel



381

Cases of legal representation
for the oppressed

Our vision

Transforming lives and communities for the glory of God by partnering with world-class, gospel-centered, Christian ministries.

Our mission

Inspire Investing donates 50% of our lifetime net profits from management fees to Christian ministries through the Give50 Campaign.

Total Giving (as of 12/31/25): \$864,372 And we're just getting started...

IMPACT DATA SOURCES: WorldHelp.net: \$10 provides one Bible to Christians in persecution; International Justice Mission: www.ijm.org: \$105 to cover trial fees for one case defending a victim of human trafficking; LifeWise.org \$30 provides a month of Bible-based education to public school students; PreBorn!: \$28 provides a free ultrasound to abortion-minded women. The data presented represents the impact generated in 2025 based on financial gifts from 2024, as cited in previously mentioned partner data.

IF YOU CAN
EAT ^{OR} DRINK
TO THE GLORY OF GOD
1 CORINTHIANS 10:31
YOU CAN CERTAINLY
INVEST
TO THE
GLORY ^{OF} GOD



Learn more at inspireinvesting.com

Inspire Advisors, LLC ("Inspire") is a Registered Investment Adviser with the U.S. Securities and Exchange Commission (SEC). Registration does not imply a certain level of skill or training. This report is provided for educational and informational purposes only and should not be considered personalized investment advice.

The Inspire Impact Score™ is a proprietary, rules-based methodology designed to assess alignment with biblical values based on Inspire's internal criteria. Values-based screening is subjective and may differ from other industry methodologies. Inspire does not claim divine endorsement of any investment or company.

Charitable giving referenced in this report, including donations through Inspire's Give50 Program, is made by Inspire through its business operations and partnerships. These efforts are not tied to specific investment outcomes and are not tax-deductible to investors. Inspire does not guarantee any specific social or spiritual impact through client investments. The Inspire Impact Score™ is a proprietary, rules-based methodology designed to assess alignment with biblical values based on Inspire's internal criteria. Values-based screening is subjective and may differ from other industry methodologies. Inspire does not claim divine endorsement of any investment or company.

Charitable giving referenced in this report, including donations through Inspire's Give50 Program, is made by Inspire through its business operations and partnerships. These efforts are not tied to specific investment outcomes and are not tax-deductible to investors. Inspire does not guarantee any specific social or spiritual impact through client investments.