



Foot Switch FS3 Data sheet

FS3

The LINAK® Foot Switch FS3 is an elegant control unit, allowing healthcare professionals across the sector to have both hands free when attending to patients, thus also helping to improve ergonomics. It is designed to be used in modular adjustment systems consisting of LINAK control boxes and electric LINAK IC actuators.

Developed in cooperation with end users, the FS3 is specifically designed to improve and ease control of applications, such as hospital beds, treatment couches/tables and various treatment chairs. The result is a particularly user-friendly and easy-to-clean unit with an elegant and aesthetic design.

However, the FS3 is also a very robust and durable foot control available in both a single and a double version. The latter allows you to add and control more movement options, often used in more advanced applications.

The FS3 is available in an analogue version as well as a digital OpenBus™ version, and for applications where trip hazards are an issue or design freedom is prioritised, the unit comes in a wireless edition too (Bluetooth® BLE).



Features & Options:

- Pedals colour: Dark grey RAL7016
- Bottom housing colour: Light grey RAL7035
- Protection class: IPX6 (or IPX6 Washable DURA™ for beds model only)
- Number of functions: 1 or 2 functions
- Cable: Straight 1000 mm and 2000 mm, coiled 600 mm
- Button type: Easy touch tactile switches
- Design: Ergonomic design in the butterfly shape
- Mounting: Floor model or mounted on the side of the bed frame
- Wireless: Wireless operation together with CA/CO with BLE - floor model only

Usage:

- Usage temperature: +5° C to +40° C
- Storage temperature: -10° C to +50° C
- Relative humidity: 20% to 80% - non-condensing
- Atmospheric pressure: 700 to 1060 hPa
- Height above sea level: Max. 3000 meters
- Compatibility: Compatible with LINAK analogue and OpenBus™ control boxes. Please contact LINAK.

Approvals:

Safety
IEC60601-1
ANSI/AAMI ES60601-1
CAN/CSA-22.2 No. 60601-1

Radio

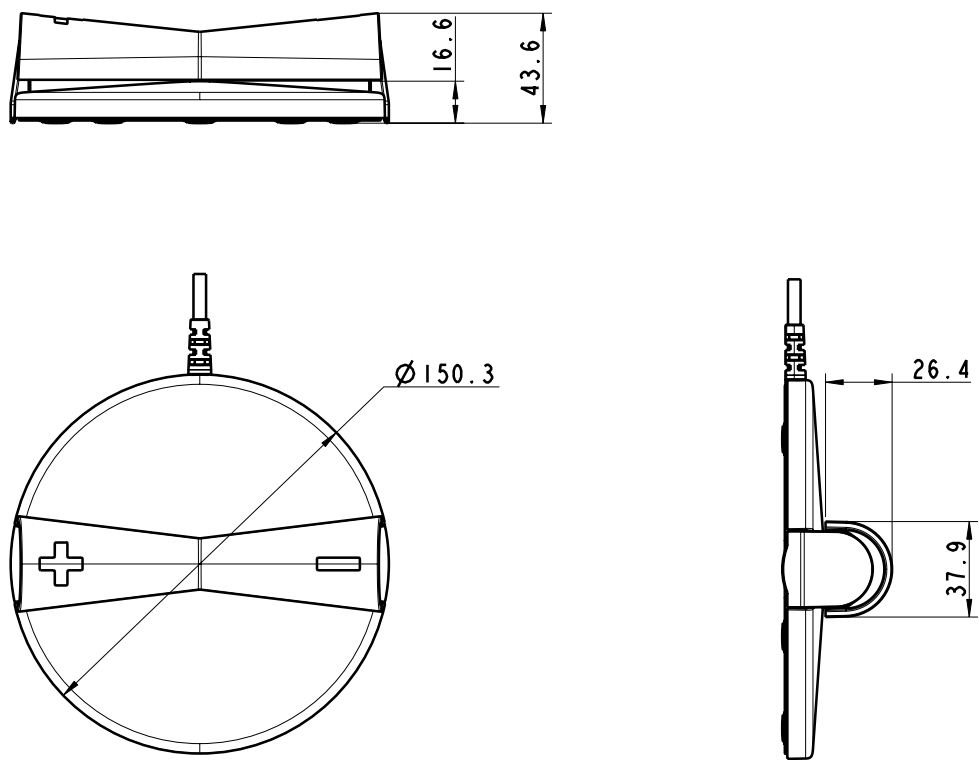
RED
FCC (US)
IC (Canada)
Telec (Japan)

Battery

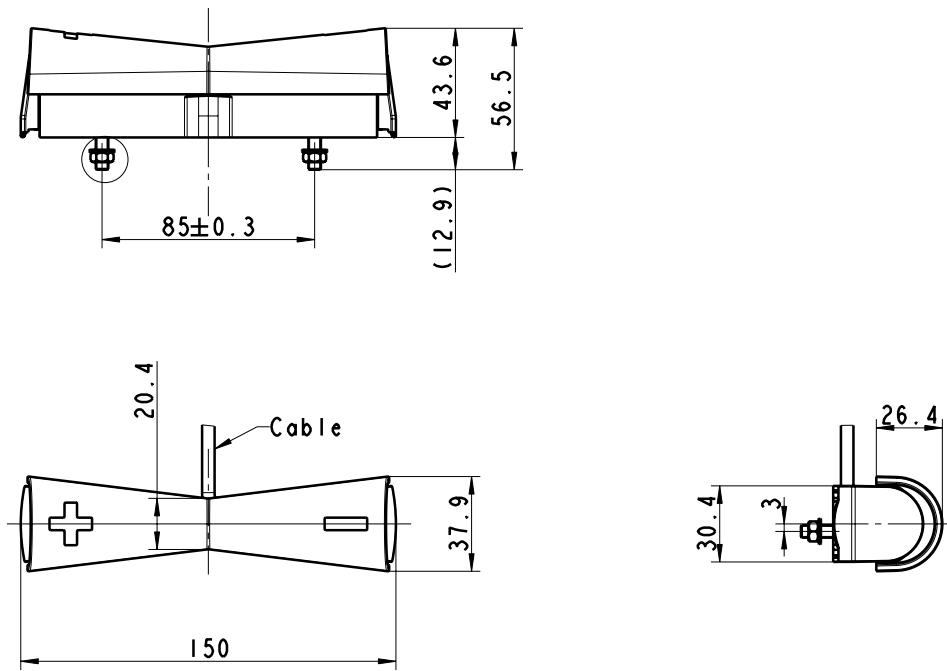
IEC 62133
UL 205
UN 38.8

Dimensions drawings:

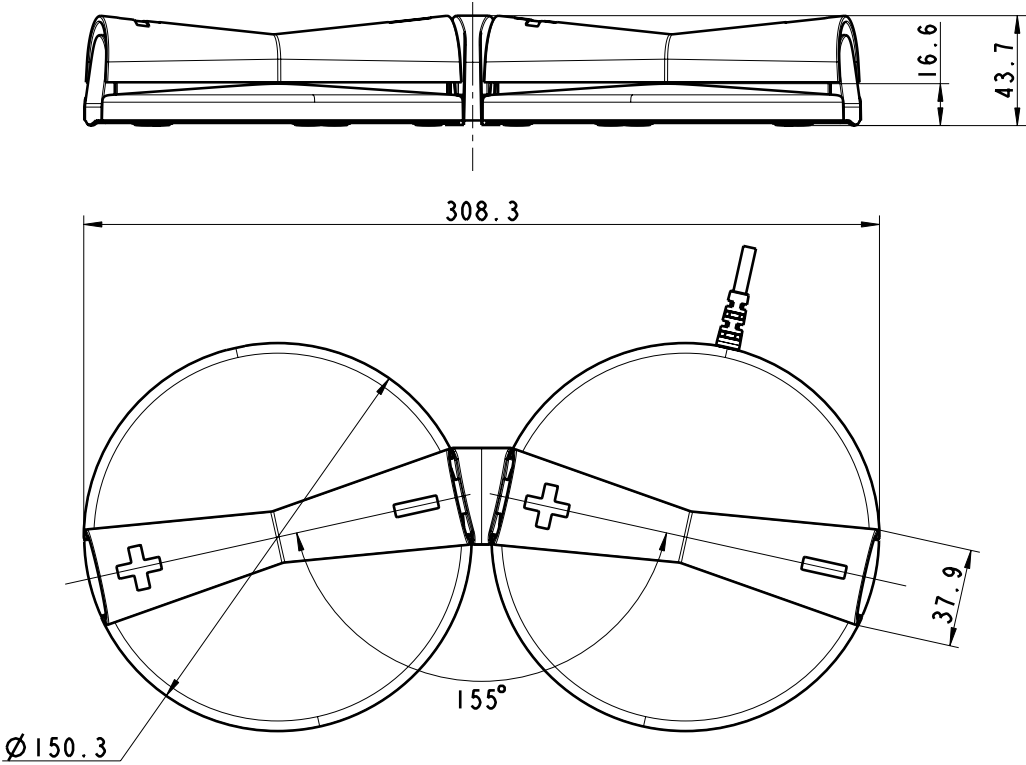
Dimensions for 1 channel floor model



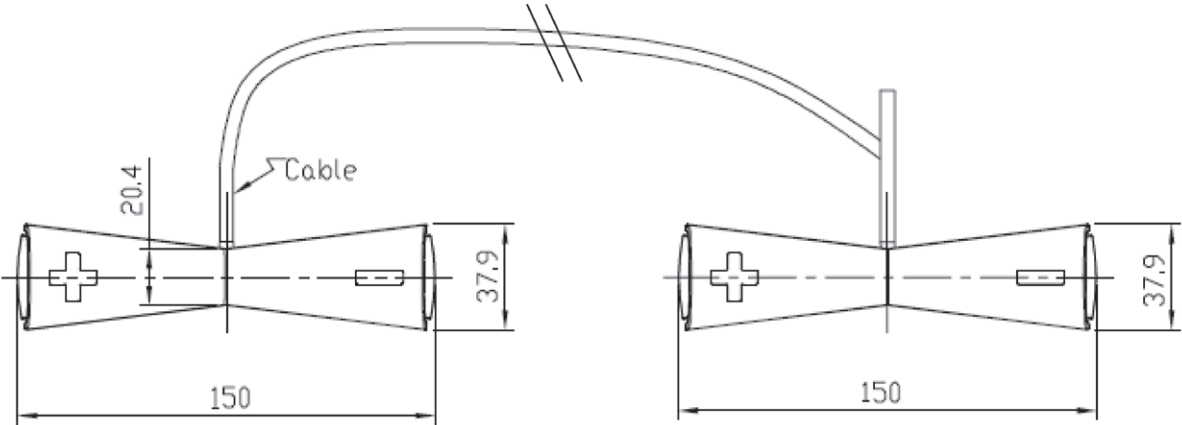
Dimensions for 1 channel bed model



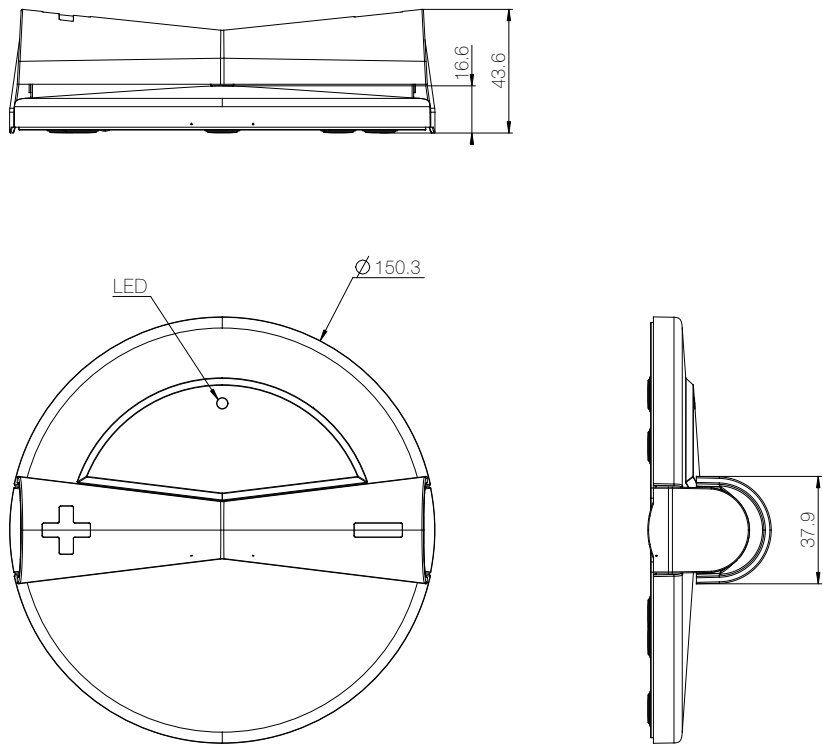
Dimensions for 2 channel floor model



Dimensions for 2 channel beds model with cable (analogue and OpenBus versions)

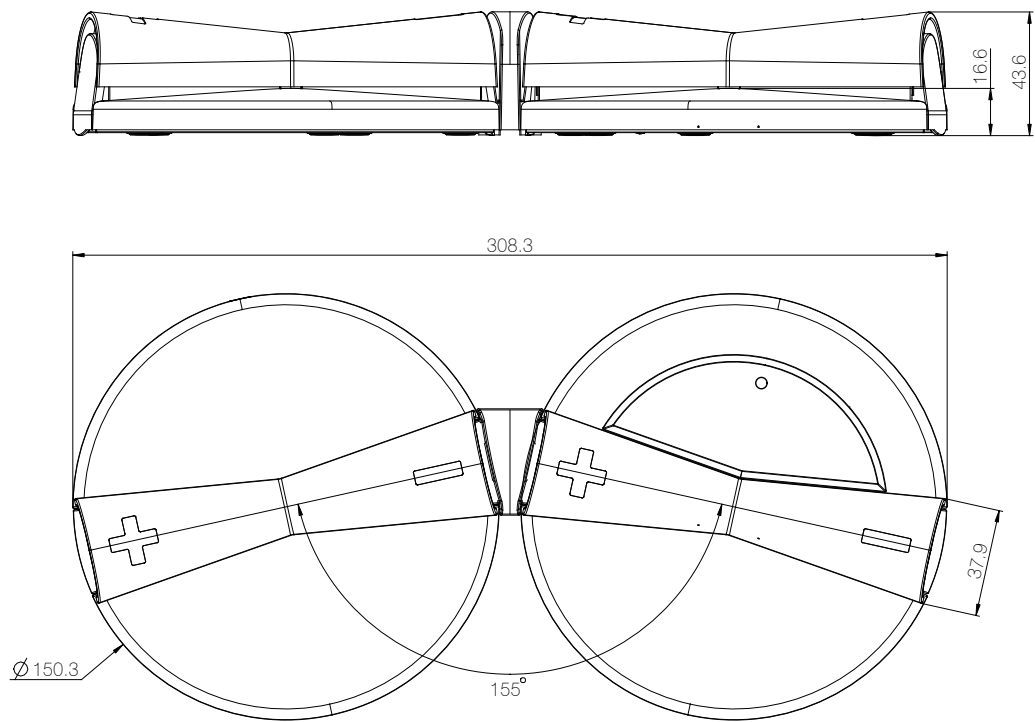


Dimensions for single F53 wireless version



Drawing no.: 05801w4001

Dimensions for double F53 wireless version



Drawing no.: 05801w4002

Foot Switch FS3

E-con ordering example:

F S3 2 0 1 2 000 0 0 0 6 - G 0 0 0 0 0 0 0 0 D 0 1 0 0 0

	Not used	0 = None	
	Not used	0 = None	
	Not used	0 = None	
	FS3 Cable length	0 = No cable 1 = Straight 2000 mm 2 = Straight 1000 mm 3 = Coil 600 mm X = Special	(For wireless version only) (Only for OB variants)
	FS3 Cable Matr.	0 = No cable 1 = PU	(For wireless version only)
	FS3 Cable Plug Type	D = DIN M = Modular N = No plug, wireless	(CB8/9/12/14/140/CBJC/CBJ1/CBJ2) (CB6/CB16/CB20/CB6S/43IC/44IC) (CA63 & CO71)
	FS3 Cable Colour	0 = Grey RAL7035 1 = No cable	(For wireless version only)
	Not used	0 = None	
	Interconnection cable	0 = None 1 = 1400 mm 2 = 300 mm	(Only for bed adapter) (Only for bed adapter)
	Not used	0 = None	
	Not used	0 = None	
	Not used	0 = None	
	Foot pedal handle colour	0 = Dark grey RAL7016 S = Special	
	Mounting	0 = No screw 1 = Screw mounting 2 = No screw	(Floor adapter single and double) (Bed adapter single and double) (Wireless floor adapter single and double)
	Box Colour	G = Grey RAL7035 - = None	
	IP-Degree	6 = IPX6 W = IPX6 Washable DURA™	(Floor version and wireless floor version) (Bed version only)
	Not used	0 = None	
	Not used	0 = None	
	Not used	0 = None	
	Not used	000 = None	
	Functionality Right pedal (Right/Double pedal)	0 = Only for OpenBus™ 1 = 2 = 3 = Not for OpenBus™ 4 = Not for OpenBus™ 5 = X = Special	See functionality overview See functionality overview See functionality overview See functionality overview See functionality overview See functionality overview wireless
	Functionality Left pedal (Left/Single pedal)	S = Single Pedal 0 = Only for OpenBus™ 1 = 2 = 3 = Not for OpenBus™ 4 = Not for OpenBus™ 5 = X = Special	See functionality overview See functionality overview See functionality overview See functionality overview See functionality overview See functionality overview wireless
	Functionality type	0 = Analogue H = Analogue V = OpenBus™ A = Wireless SW1 B = Wireless SW2 C = Wireless SW3 X = Special SW	(CB6 like control box, common positive) (Common Ground, CB9 like control box must choose this bit)
	FS3 Type	0 = Bed adapter 1 = Floor adapter 2 = Floor adapter 3 = Bed adapter 4 = Floor Wireless 5 = Floor Wireless	(Single) (Single) (Double) (Double) (Single) (Double)
	Controls type	S3 = FS3	
	Controls	F = Foot switch	

Combination possibilities

	FS3 Floor version 1 ch 		FS3 Floor version 2 ch 		FS3 Bed version 1 ch 		FS3 Bed version 2 ch 		FS3 Wireless
	Analogue	OpenBus	Analogue	OpenBus	Analogue	OpenBus	Analogue	OpenBus	Bluetooth®
CB	CB6, CB8, CB9, CB12, CB140, CA30, CA40	CB6S, CB16, CB20	CB6, CB8, CB9, CB12, CB140, CA30, CA40	CB6S, CB16, CB20	CB6, CB8, CB9, CB12, CB140, CA30, CA40	CB6S, CB16, CB20	CB6, CB8, CB9, CB12, CB140, CA30, CA40	CB6S, CB16, CB20	CA63, CO71
Cable type	Cable straight 2000	Cable straight 1000, 2000 cable coiled 600	Cable straight 2000	Cable straight 1000, 2000 cable coiled 600	Cable straight 2000	Cable straight 1000, 2000	Cable straight 2000, interconnection 1400*	Cable straight 2000, interconnection 1400*	N/A
Plug type	RJ45 (only CB6, CA30, CA40), DIN plug	RJ45 OpenBus	RJ45 (only CB6, CA30, CA40), DIN plug	RJ45 OpenBus	RJ45 (only CB6, CA30, CA40), DIN plug	RJ45 OpenBus	RJ45 (only CB6, CA30, CA40), DIN plug	RJ45 OpenBus	N/A
CBJH					Plug type: RJ45 Cable: straight 2000				N/A
CBJ1, CBJ2, CBJC					Plug type: DIN plug Cable: straight 2000				N/A
CBJC					Plug type: DIN plug Cable: straight 2000				N/A

* Cable material is PVC which is sufficient for a cable mounted between two foot switches with fixed mounting in an application. It is in accordance with LINAK cable guidances.

LINAK® accepts no responsibility for possible errors or inaccuracies in catalogues, brochures, and other material. LINAK reserves the right to change its products without prior notice. LINAK cannot guarantee product availability and reserve the right to discontinue the sale of any product. User is responsible for determining the suitability of LINAK products for a specific application. All sales are subject to the 'Standard Terms of Sale and Delivery', available on LINAK websites.

LINAK and the LINAK logotype are registered trademarks of LINAK A/S. All rights reserved.