

System data sheet BASWA Basic One



Description & application

Designed for impact resistance and expedited installation (as few as 1-2 days), the BASWA Basic One acoustic system absorbs sound to reduce reverberation time in a space. The system consists of BASWA Basic panels adhered to a stable, solid substrate using BASWA Adhesive, and a finish of BASWA One.

BASWA Basic is a pressure-stable (limited ball impact resistance), sound-absorbing acoustic system made of expanded glass granulate and recycled marble aggregate. Applicable for ceilings and walls in all interior areas, damp rooms and protected exterior areas.

System Data

System characteristics Ideal for high-traffic areas and walls, designed for quick installation

Can be installed in as few as 1 -2 days

System thickness: 30 mm

Apply to seamless, flat surfaces

No panel perforation or seam telegraphing

Durable, impact resistant system panel and marble finishes

Natural white (NCS S0300-N) or tinted to any color with BASWA Colors Tint Additive

Swiss engineered components made in US

Comprehensive cleaning and maintenance plan and product line

Taper or Plasterer installed, by BASWA Network of Certified Installers

In stock and ready for immediate delivery

Finish characteristics Smooth marble aggregate finish

Hand troweled, 1 coat finish on BASWA Basic system panel

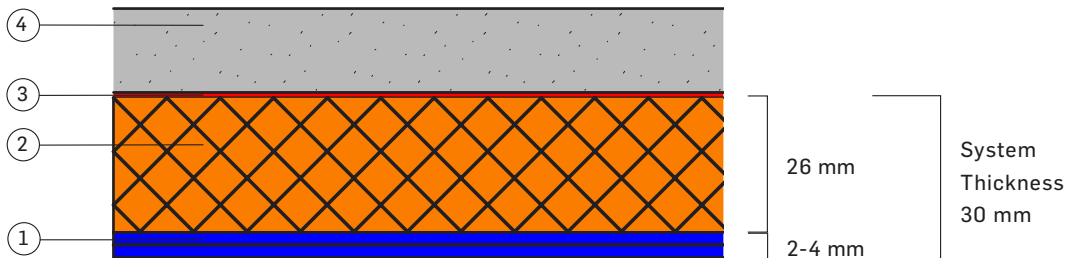
Finish coat aggregate grain diameter of 0.5-1.0 mm

Weight 30 mm 1.93 lbs/sf (9.41 kg/m²)

*Weight may vary depending on the installers application.

Maintenance For further information about the cleaning and maintenance, or repair, of BASWA acoustical plaster systems, refer to the BASWA cleaning and maintenance guidelines.

System construction



1. BASWA One 2. BASWA Basic panel 3. BASWA Adhesive 4. Substrate

*Not shown: BASWA Prime in panel seams and BASWA Trim (used as needed)

System components	<p>BASWA Basic Panel A 26 mm, factory sanded panel of fused recycled glass bead granulate.</p> <p>BASWA Adhesive A lightweight gypsum-based adhesive.</p> <p>BASWA Prime A recycled mineral granulate mixture.</p> <p>BASWA Base A crushed marble aggregate loose bodied slurry.</p>
Assembly	Once BASWA Basic system panels are properly adhered to a stable substrate, trims are coated with BASWA Prime. Once dry and sanded, BASWA One is trowel applied.
Substrate	<p>Must be air-tight</p> <p>≥½" standard drywall (framing conditions dependent), new or existing</p> <p>Concrete or Plaster, new or existing in good condition</p>
Installer requirements	BASWA acoustic systems can only be installed by companies that have been trained by BASWA acoustic North America and are in possession of a BASWA acoustic certificate. BASWA acoustic only supplies to certified companies. The latest BASWA planning documents and installation guidelines also apply.
Install environment	<p>Follow ASTM C842 Environmental Conditions for installation. Air dry bonding characteristics.</p> <p>If ambient outdoor temperature at the building site is less than 55° F (13° C), a temperature of <80°F / >55°F (<30°C / 15°C) must be continuously maintained continuously in the area of the installation for one week prior to the application. Temporary heat should be evenly distributed to prevent concentrated uneven heat or cold on the BASWA DTG acoustic system or its substrate. Acceptable temperature range shall be maintained until the permanent HVAC system is activated.</p> <p>Ventilate building spaces as required to remove excess moisture to promote drying of the applied materials. Prevent strong fluctuations in temperature and relative humidity, care must be taken to ensure that the dew point is not located on the surface or within the BASWA acoustic system. Moisture caused by condensation in the room air can cause damage to the system.</p> <p>Protect contiguous work from soiling, splattering, moisture deterioration, and other harmful effects that may be caused by the application of the materials.</p>
Installation timeline	1-3 day installation time. Assumes an installation team of 3-4 persons and a flat surface size of 850 - 1,100 sf (80–100m ²).
General	For further information about product coverages or product information, refer to the BASWA product data sheets.

Technical information

Acoustical absorption	NRC per ASTM C423	
	<u>A Mount (no plenum)</u>	<u>E Mount (with plenum)</u>
	0.70	0.75

Fire rating Class A fire rated per ASTM E84

Mold and mildew Rated 10 / 10, signifying no mold growth per ASTM D 3273-16

Light reflectance Light Reflectance L Value of 90.2 per ASTM E 1477-98

VOC content $\leq 0.5 \text{ mg/m}^3$, Passing CA Dept. of Public Health CDPH/EHLB/Standard Method Vers 1.2, 2017
USGBC LEED Version 4, BD&C, ID&C
The WELL Building Standard
ANSI/GBI 01, Green Building Assessment Protocol
ANSI/ASHRAE/USGBC/IES Standard 189.1

Thermal conductivity	<u>Thickness</u>	<u>W/(m² K)</u>	<u>R (m² K/W)</u>
	30 mm	0.073	0.4110

Sustainability 82 - 83% recycled content in final system, thickness depending. Formaldehyde free. Components made in US. VOC free. No LBC Red List materials. LEED, WELL, Mindful Materials, and Portico documentation available.

For further information about the sustainability aspects of BASWA systems and products refer to the BASWA Sustainability data sheets.

Safety data For further information about safety during transportation, storage and handling, and/or disposal, refer to the BASWA Safety data sheets.

Humidity / Dew point

Recommended relative humidity up to max. 90 %.

If there are strong fluctuations in temperature and relative humidity, care must be taken to ensure that the dew point is not located on the surface or within the BASWA System.

Moisture caused by condensation in the room air can cause damage. The design of the building insulation and the commissioning of air conditioning systems must be planned and controlled accordingly.

Disclaimer

The present information, and suggestions for installation and application are based on knowledge and experience in typical situations, providing that products are properly shipped, stored, handled and applied. Due to the widely varying working conditions, a guarantee for installed materials cannot be reliant either on this information. Installer must verify products are suitable for the intended application. Product specifications are subject to change without notice. All rights reserved. Changes, reprints and copies, as well as electronic, reproduction, even in excerpts, require the explicit permission from BASWA acoustic North America. Working conditions, a guarantee for installed materials cannot be reliant either on this information. Installer must verify products are suitable for the intended application. Product specifications are subject to change without notice. All rights reserved. Changes, reprints and copies, as well as electronic, reproduction, even in excerpts, require the explicit permission from BASWA acoustic North America..