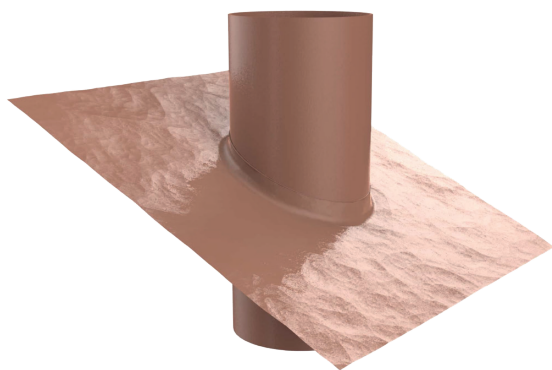


Available in Charcoal or Terracotta colours. The SWTRK-150 is quicker, easier and safer to install than generic rubber boot type systems. Ideal choice for new or established homes where modern kitchens or BBQ rangehoods are installed. Commonly used in conjunction with SWDV-150 roof vent. Fits all industry standard 150mm vents on the market.



CATEGORY	DETAIL
Model	SWTRK-150
Type	150 mm Lead roof flume
Application	Used for all 150mm vents like the SWDV-150
Roof profile	Installed on all standard Tiled roofs.
Connection Type	150mm Ducting
Lead Flashing Material	1.3 mm Sheet Lead flashing. 15kgs per m2
Solder	Soft Solder 50/50
Flume Pipe material	0.4mm Galvanised steel
Top of flume	150 mm Diameter.
Bottom of Flume	150mm ( This allows a 150mm one way valve to fitted)
Flume Pipe Height	280mm
Lead Flashing width	500mm
Lead Flashing length	500mm
Assembly	Galvanized pipe is Soldered to the lead flashing and siliconed underneath.
Weight	2.5kg
Standard Colour	Unpainted. ( Grey)
Custom Colours	Charcoal & Terracotta
Accessories available	150mm One way Valve.
Installation:	This is a Trade-Only product and should only be installed by a licenced professional.

Available in Charcoal & Terracotta colours