

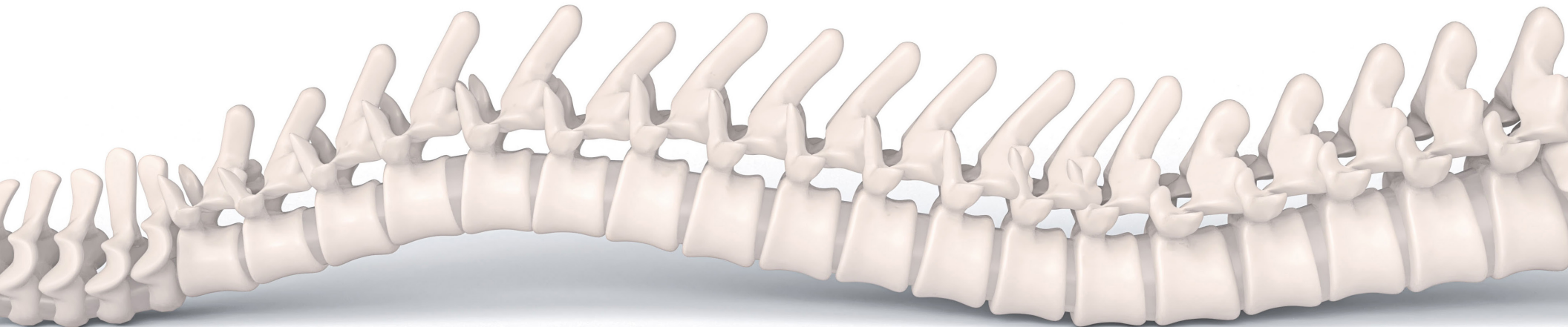


ENCORIS™

a Division of Science Care
Medical Models, Bone
Models & Surgical Trainers

www.encoris.com

**PRECISION TRAINERS.
GLOBAL ACCESS.
LIMITLESS LEARNING.**



“

Models provide the blueprint;
cadavers demonstrate the
reality. Together, they prepare
surgeons with precision,
confidence, and compassion to
improve *patient outcomes*.

”

ABOUT ENCORIS

From classrooms to conference halls, our models make education safer, while producing more meaningful and powerful demonstrations.

- ▶ 16+ Years leading anatomical model innovation
- ▶ Trusted in 75+ countries worldwide
- ▶ State-of-the-art facility in Holland, MI
- ▶ Fast, industry-leading turnaround times
- ▶ Offering custom models, ready-to-use trainers, and tailored displays with protective and marketing cases ready for real-world medical education
- ▶ Joined Science Care in 2025 to expand our offerings and better support global anatomical training needs



At Encoris, we create anatomical models and training solutions that give healthcare professionals the confidence to care for patients — and innovators the ability to showcase medical devices with clarity and impact.

Better Practice. Better Presentations. Better Outcomes.
Anatomical Models, From Single Bones to Full-Body Trainers — Designed to Fit Your Needs.

OUR MISSION

Our mission is to transform medical education and product demonstration with anatomical models that don't just convey knowledge - they build skills, inspire confidence, and bring innovation.



WHO WE SERVE

- Medical Device & Technology Companies
- Medical Associations & Societies
- Universities & Technical Colleges
- Government & Military Institutions
- Emergency Medical Services
- Hospital & Healthcare Providers
- Simulation Centers
- Research Institutions
- Independent Physicians
- Medical and Bioskills Training Facilities



OUR VISION

“We believe healthcare professionals deserve the safest, most realistic training before they step into the operating room – and medical device companies deserve equally realistic platforms to demonstrate their implants, instruments, and innovations.”



DISCOVER THE VALUE

Anatomical Bone Models & Surgical Trainers



STUDENTS

Our trainers bridge the gap between theory and real-world skill.



EDUCATORS

Reliable, durable tools that fit your curriculum - making every practice session consistent, repeatable, and effective.



MEDICAL DEVICE

Our models equip sales teams and clinicians with hands-on tools that enhance training, deliver impactful demonstrations, and accelerate product adoption.



HEALTHCARE SYSTEMS

Our models and displays educate patients, enhance pre-op planning, and deliver safer training for better outcomes from day one.

P r a c t i c e . D e m o n s t r a t e . L e a r n .

All in one realistic experience.

**With our solutions, every learner can practice until ready. Every educator can teach with confidence.
Every medical device can be seen, touched, and understood — and every patient can trust.**

WHY ENCORIS?

Precision, Innovation & Confidence in Every Model

1

Anatomical Accuracy

Our models use real human anatomy data for unmatched detail and realism.

2

Realistic, Hands-On Experience

High-quality models that deliver tactile, visually accurate demonstrations across medical specialties.

3

Durable & Cost-Effective

Engineered for long-term use, reducing the need for repeated training investments.

4

Customizable & Versatile

Fully tailored to your applications, showcasing device features and meeting diverse training objectives.

5

Global Trust & Reach

Used by universities, hospitals, and leading medical device companies in over 75 countries.

6

Our Team

Our highly trained and experienced team delivers expert development and production of custom anatomical models and trainers.

When it comes to medical training and product demonstration, not all models are created equally.

ENCORIS PRODUCT HIGHLIGHTS

Make an Impression. Anywhere.

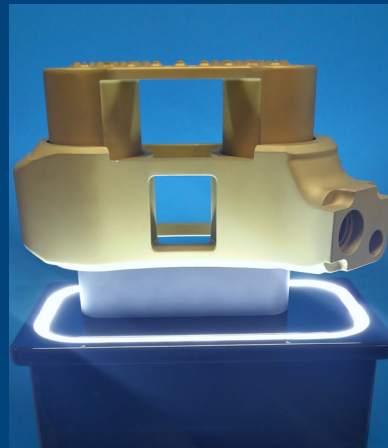
Product	Description	Common Uses
Custom Displays	Glass-like branded displays that house implants, tools, and devices - designed to showcase	Trade shows, medical society meetings, medical offices, and patient education
FlexBones	Durable, customizable bone models - flexible, reusable, cost-effective with optional embedded hardware for demonstration or deployment	Hands on orthopedic presentations
ALP Surgical Models	Modular spine trainers	Hands on anterior, lateral, and posterior spine surgery demonstration
Surgical Trainers	Off-the-shelf anatomical trainers - anatomically accurate with realistic feedback and clear imaging	Hands-on surgical training skills such as minimally invasive spine, peripheral nerve stimulation, and other interventional pain procedures
Pathology-Specific Task Trainers	Realistic, reusable task trainers tailored to your device and surgical applications	Enhances training, speeds adoption, and accelerates market entry
Medical Demo Cases	Protective, branded cases with custom inserts for standout demos	Protecting your investment - keep demos polished, professional, and organized

Elevating Medical Training & Presentations

CUSTOM DISPLAYS

Custom designs, perfect for trade shows, medical society meetings, medical offices, patient education

- ▶ Crystal clear, anatomically accurate implanted bone models on branded bases for a polished, professional presentation
- ▶ Organized tabletop displays designed to highlight biologics, pharmaceuticals, or medical instruments
- ▶ Scaled or enlarged replicas of implants and hardware



FLEX BONES

Flexible. Durable. Customizable.

- ▶ **Built to Last:** Flexible, unbreakable, and field-ready.
- ▶ **Customizable:** Tailored to your implants and pathologies.
- ▶ **Cost-Effective:** Up to 40% more affordable than acrylic models.
- ▶ **Sustainable:** Reusable for long-term performance.

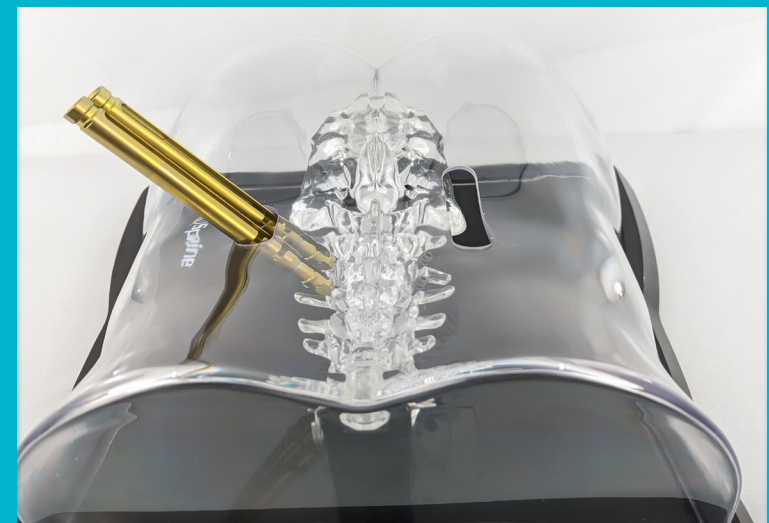
Redefining what's possible with strong, versatile, accessible, and sustainable solutions that help learners master skills, educators teach with certainty, devices be fully understood, and patients feel secure in their care.

The clear choice for powerful, hands-on orthopedic presentations.

FLEXBONE
DEMO
VIDEO



bitly

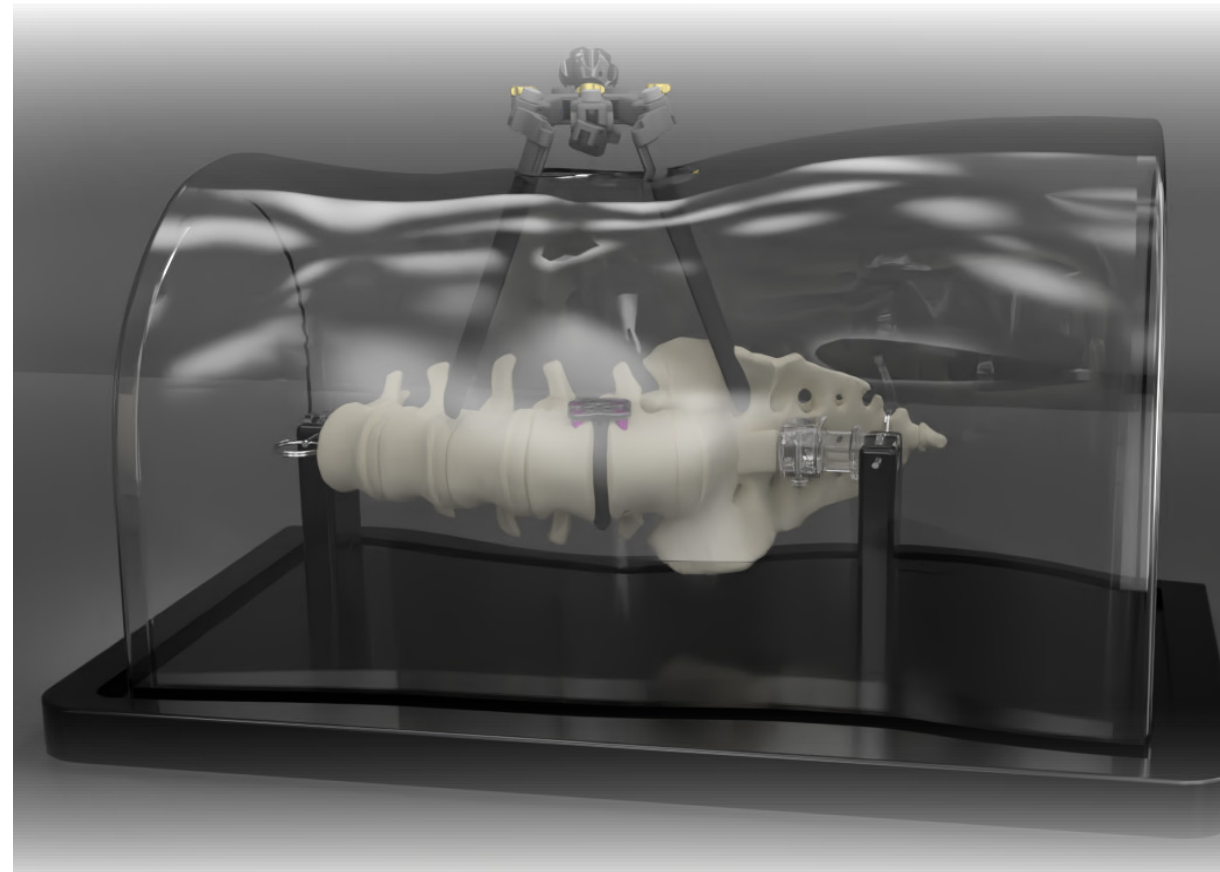


ALP SURGICAL MODELS

Our ALP (anterior, lateral, and posterior) models deliver the most effective and efficient platform for hands-on spine surgery demonstration. The modular design lets users replace spine segments after training without replacing the entire construct.

Choose from a variety of replaceable bone options, including:

- X-ray workshop foam
- Clear or opaque FlexBones (durable, repeatable training bones)
- Custom Hybrid Bones (rigid structures with replaceable foam elements)



To complete the experience, Encoris also offers lifelike accessories—skin, soft tissue, and other anatomies—creating a realistic surgical environment.

SUSTAINABLE - COST-EFFICIENT - ANATOMICAL PRECISION - PORTABLE - VERSATILE

SURGICAL TRAINERS

Anatomically accurate, off-the-shelf models designed to deliver true-to-life haptic feedback and clear imaging.



Accelerates hands-on skills development



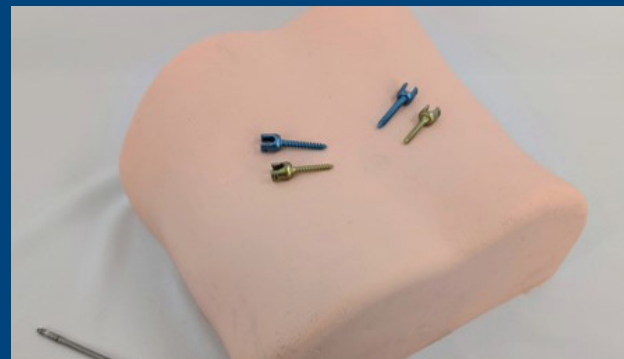
Boosts physician confidence and patient trust



Enhances sales training and communication

Trusted by industry leaders to meet training goals, support innovation, and launch devices on schedule.

Realistic. Reliable. Ready to Train.



Pelvis/SIJ Trainer

Ideal for SIJ injection or fixation procedure training



Lower Torso

Ideal for a wide array of lumbar MIS procedure training

PNS Bundle

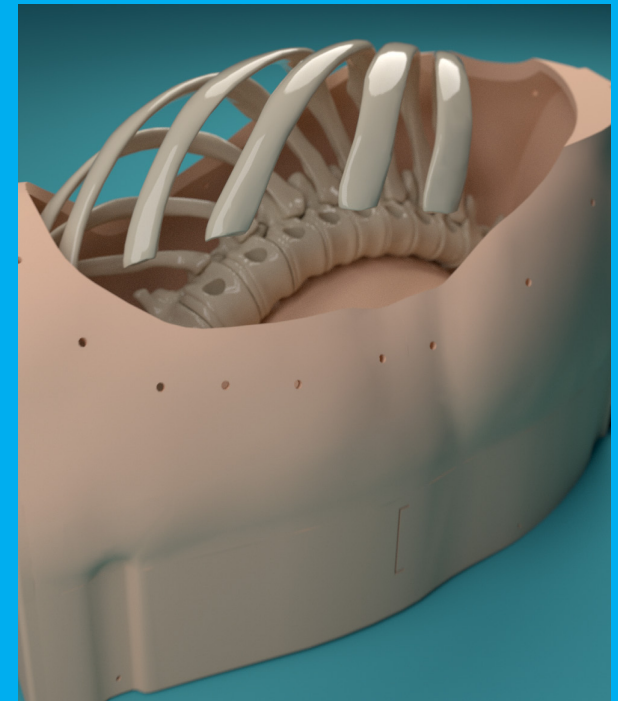
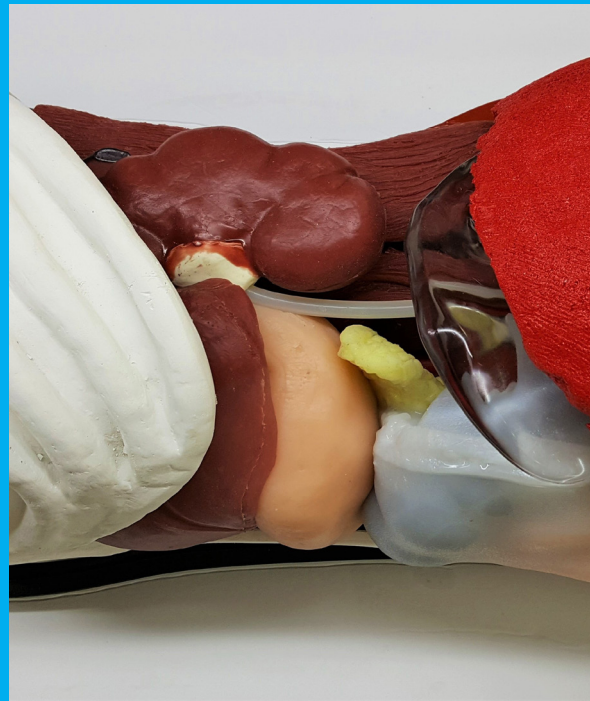
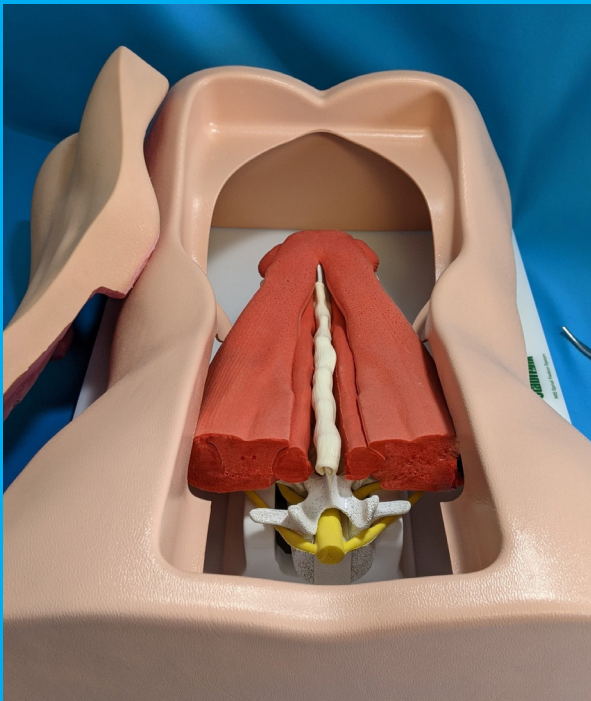
Shoulder, lumbar, and cervical with occiput models—ideal for PNS and injection training, available as a set or individually

PATHOLOGY-SPECIFIC TASK TRAINERS

Elevate your surgical training

Encoris delivers realistic, reusable trainers tailored to your device and procedure—boosting surgeon confidence and speeding adoption.

- ▶ **Anatomically Accurate:** Based on real human anatomy and your implant CAD data
- ▶ **Efficient & Cost-Effective:** Focused on specific surgical tasks for repeatable training
- ▶ **Impactful Demos:** Enhances device training and accelerates market entry



The Standard in Surgical Task Training

MEDICAL DEMO CASES

Show Up Prepared. Stand Out with Confidence.

Encoris demo cases are custom-designed to protect, organize, and showcase your medical devices—making every sales presentation seamless and professional.



Delivering Confidence in Every Demo

- ▶ **Durable & Versatile:** Soft nylon, blow-molded, and Pelican-style options
- ▶ **Custom Fit:** Precision foam inserts for secure, organized transport
- ▶ **Brand-Ready:** Custom colors, hardware, logos, and nameplates available
- ▶ **Integrated Impact:** Incorporate Encoris bone models to elevate hands-on demonstrations
- ▶ **Built to Impress:** Ideal for sales calls, trade shows, and physician meetings

THE ENCORIS PROCESS

Working with Encoris is simple, transparent, and collaborative.

Here's what the custom order process looks like—from your first inquiry to final delivery:



From the first conversation to final delivery, Encoris ensures every detail is handled with care so you receive the model you need, exactly as you need it. And the best part? Reorders and standard requests are quick, easy, and hassle-free!

QUESTIONS & ANSWERS

QUESTION	ANSWER
How realistic are the models compared to cadavers?	Encoris delivers highly realistic, repeatable, and cost-effective alternatives to cadaver tissue - customized to replicate human anatomy and performance for surgical training and demonstration.
Are these models suitable for hands-on surgical training as well as demonstration?	Yes. Our trainers are designed to support hands-on procedural training as well as visual demonstration, and can be customized to match your specific training goals.
How durable are the models?	Our models are built for repeated use with long-term durability , making them ideal for ongoing training and demonstrations. For added protection, custom cases are available.
What procedures are your models and trainers best suited for?	Our models and trainers support a wide range of procedures across specialties such as spine, orthopedics, neurology, and pain management. If you do not see what you are looking for, just ask!
Do your models and trainers require special storage or handling ?	No special storage is needed -- just avoid extreme temperatures to extend the model's lifespan.
How do the costs of the models and trainers compare to cadaver-based training?	Our reusable models and trainers offer long-term cost efficiency while complementing cadaver-based training, helping reduce setup, cleanup, and disposal costs without completely replacing the hands-on cadaver experience.
Can the products be shipped internationally ?	Yes, we ship worldwide and can help coordinate international logistics.
What support do you provide?	We provide training, engineering, maintenance, and ongoing support throughout your journey.

ENCORIS JOINS SCIENCE CARE

Together, Science Care and Encoris are shaping a new era in medical education. By uniting Science Care's trusted leadership in tissue-based training with Encoris's innovative acrylic models and surgical trainers, we're unlocking new possibilities for clinicians, educators, and researchers worldwide.



“Partnering with Encoris allows us to expand beyond cadaver-based learning and deliver the next generation of training solutions. Together, we’re driving innovation, upholding ethical standards, and advancing medical education—making accurate, accessible tools available to clinicians worldwide.”

Tricia Hammett
CEO & PROGRAM DIRECTOR

Expanding the Future of Medical Training & Research

Better Practice. Better Doctor. Better Care.
Let's shape the future of healthcare.

Contact Us Today

& discover how our models and trainers can transform your curriculum.



1-800-957-7137
info@encoris.com
www.encoris.com



LEARN
MORE



Because when medical professionals train with precision—and innovations are showcased with clarity—patients everywhere benefit.