



SMARTWH™



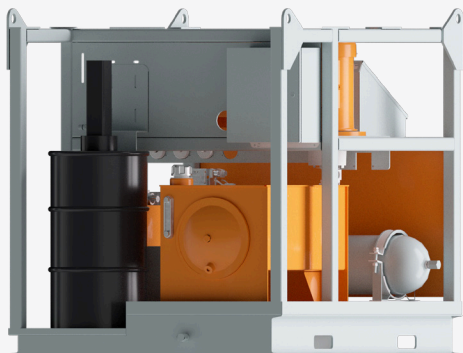
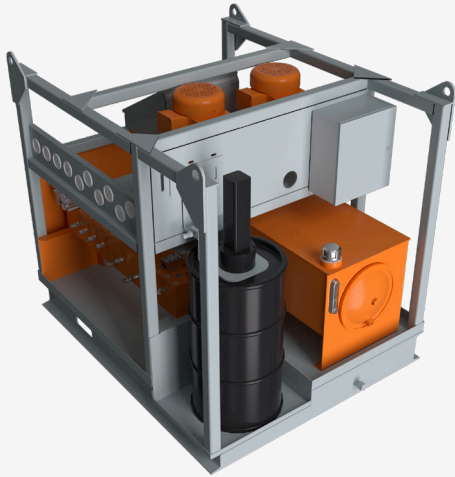
CANATEX
COMPLETIONS SOLUTIONS

SMARTER. FASTER. BETTER.

The **SMARTWH™** is the next evolution of wireline operations.

Even the best crews operating by “feel” cannot provide the consistency that today’s industry demands. These inconsistencies during operations lead to inefficiencies and potential damage to equipment and cables, one of the highest cost items for wireline.

That’s why Canatex engineers developed the **SMARTWH™** system – a recorded digitally controlled and operated system for wireline PCE operations.



Features

Skidded Electrical Over Hydraulic Unit

- Small skid can be operated remotely, keeping employees out of the red zone
 - o Can fit in a pickup bed for easy of transport
- Actively monitored hydraulic lines for:
 - o Upper & Lower pack off rubbers
 - o Tool traps
 - o Spare Aux port for additional equipment (3rd rubber, vent sub, etc)
- Automatic grease injection with custom intervals and injection periods
- Operations of up to triple WLW
 - o Full operational function in under a minute
- All data is recorded for review and additional analytics
- Next Level HSE
 - o Decreases potential “Red Zone Exposure”
 - o Remote Operations (Controlled from Winch Operator)
- Active Monitoring
 - o Upper & Lower Pack Off Rubbers
 - o Tool Trap Functioning (Open & Close)
 - o Additional Ports
 - 3rd rubbers
 - Vent subs
 - Etc.
- Grease Injection
 - o Automatic injection with customizable intervals
- KPI's
 - o Recorded data
 - o Analytics
 - o Always improving
- Minimal Space
 - o no extra trips to well head for delivery

Ready to make superior wellhead connections? Connect with your Canatex rep today.



For more information contact

P: 432.218.3795 E: info@canatexcompletions.com

