



2024

OTTP-SF DONOR IMPACT REPORT



Occupational Therapy
Training Program – San Francisco
is a division of

Special Service
for Groups, Inc.

CONTENTS

LETTER FROM OUR DIRECTOR

3

ABOUT OTTP-SF

4

FUNDING PARTNERS

5

OTTP-SF CLIENTS

6

OUR PROGRAMS

7

ACHIEVEMENTS & EXPERTISE

8

IMPACTS

12

SPONSORS

17

HOW YOU CAN HELP

18

CONTACT

LETTER FROM DIVISION DIRECTOR

Dear Supporters, Donors, Volunteers, and Partners,

As the Division Director of SSG, Inc./OTTP-SF, I want to take a moment to express my deep and heartfelt thanks to each and every one of you who has been part of our journey this year. Your unwavering support—whether through your generous donations, your time as volunteers, or your strategic partnership—has been the heart and soul of OTTP-SF and has made a profound difference in the lives of so many young people in the Bay Area.

Together, we have created opportunities for growth, learning, and success for children, youth and young adults who have been impacted by trauma, empowering them to reach their full potential in academic, personal, and vocational endeavors. We are truly grateful for everything you've done to help us reach this point, and we couldn't have achieved what we have in 2024 without your personal investment in our mission.

To our incredible donors: Your generosity is the foundation of our work, providing the resources needed to bring our programs to fruition. Your belief in our vision and mission has made it possible for us to reach even more young people, ensuring that they have the support they need to thrive.

To our dedicated volunteers: Your selflessness and commitment have touched us all. The time, energy, and passion you share with the youth we serve has not only made a lasting impact on their lives but has also inspired all of us to keep pushing forward, knowing that we are making a positive difference, together.

To our valued corporate partners and funders: Your collaboration and support are vital to the sustainability and growth of our initiatives. We are grateful for your investment in our mission, which enables us to expand our reach and continue creating meaningful change.

As we reflect on the milestones we've celebrated this year, it's clear that the heart of our success is the collective effort of this incredible community. Your belief in our vision fuels our determination and has inspired all of us at OTTP-SF to keep working tirelessly to build a brighter future for the young people we serve.

On behalf of the entire OTTP-SF team, I want to extend our sincerest thanks. Your support has transformed lives, and together, we're laying the groundwork for even greater impact in the years to come.

We look forward to continuing this journey with you, as we work side by side to create lasting change and opportunities for those who need it most.

With deepest gratitude,



Colleen Devine
Division Director
Occupational Therapy Training Program-San Francisco



HEALING THROUGH DOING



ABOUT OTTP-SF

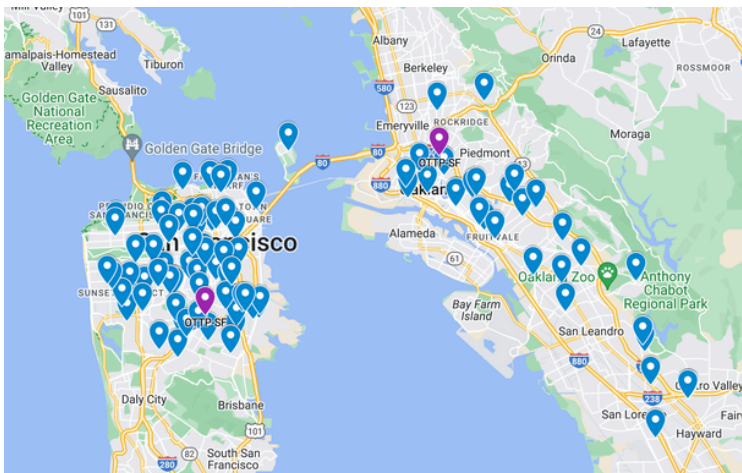
MISSION

OTTP-SF is dedicated to providing youth with increased opportunities for personal, educational, and vocational success.

ABOUT

OTTP-SF is a division of Special Service for Groups, Inc., a 501c3 non-profit. We have a multi-disciplinary clinical team comprised of Licensed Occupational Therapists, Psychotherapists, and Licensed Psychiatric Mental Health Nurse Practitioners. With a history spanning 25 years, we remain committed to providing comprehensive mental health services to Bay Area youth.

Staff Language Capacity



*OTTP-SF's
clinicians can be found
serving youth
throughout the
San Francisco Bay Area
in over 100 locations.*

FUNDING PARTNERS

OTTP-SF provides mental health services to youth who reside in the San Francisco Bay Area. Youth are primarily referred to us through schools, the Department of Public Health Behavioral Health Services, and community partners.



Alameda County Office of Education
Alameda County Probation Department
County Community Schools



Department of Children, Youth and Their Families/San Francisco Probation Department
Department of Public Health/Behavioral Health Services



Department of Rehabilitation
East Bay Agency for Children
East Bay Asian Local Development Corporation
Edgewood Center for Children and Families
Lincoln Families

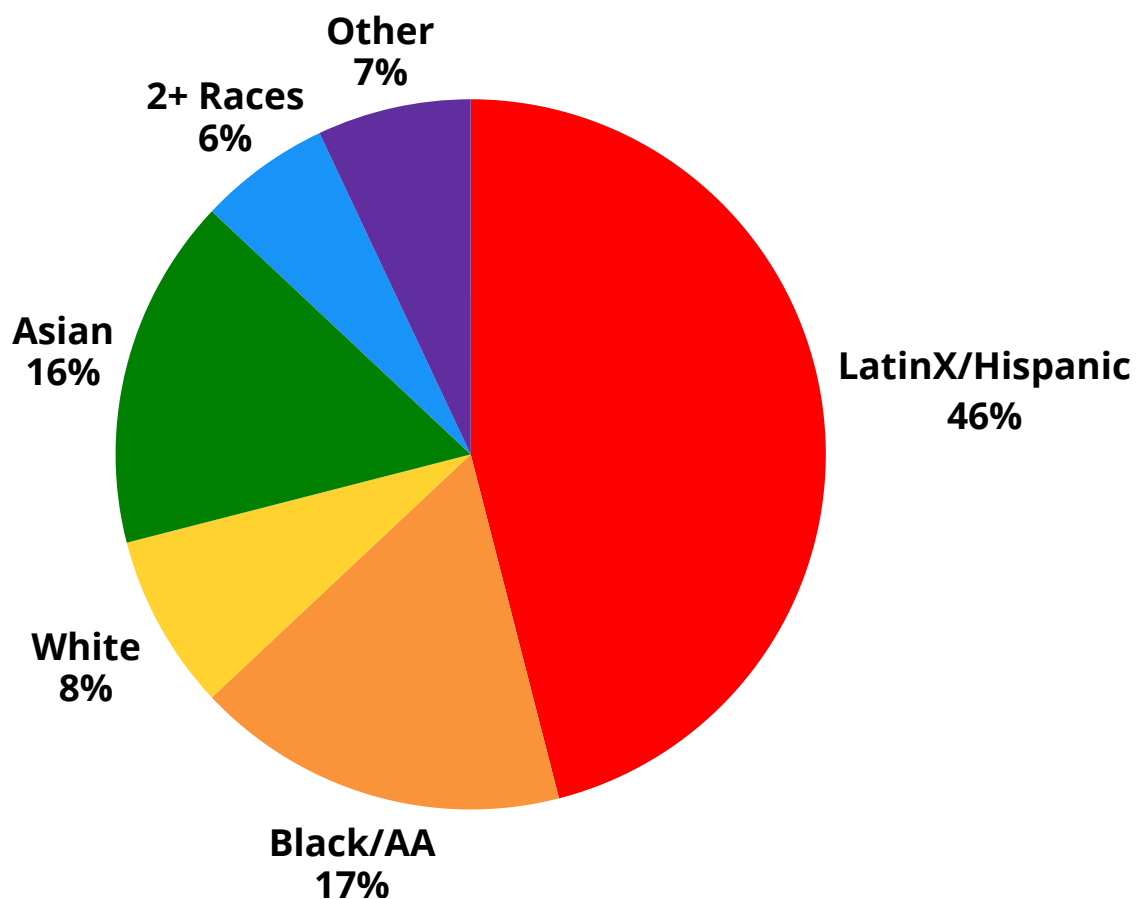


Oakland Benioff Children's Hospital
San Francisco Unified School District/Special Education
St. Paul's Episcopal School
St. Vincent's Day Home

OTTP-SF CLIENTS

OTTP-SF provides mental health services to youth ages 3-24. Youth may be referred to us for the following reasons: they are facing mental health challenges, impacts from trauma, learning disabilities, social-emotional difficulties, and/or developmental delays. The youth that OTTP-SF serves are living at or below the poverty level. They may be unhoused, food insecure, have special education status, on probation or detained, pregnant or parenting, navigating the foster care system, or a combination of the above.

CLIENT DEMOGRAPHICS



OUR PROGRAM

PROGRAM DELIVERY

OTTP-SF serves children and youth through a variety of programs that exist within our partner organizations. Each program has its own focus and distinctive range of services.



Early Childhood
Ages 3-6



Childhood
Ages 6-10

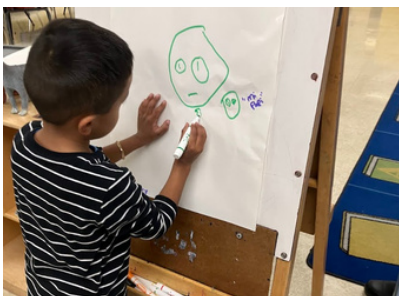


Adolescence
Ages 10-18



Transition Age
Ages 18-24

HEALING MODALITIES



Coping Skills



Social Skills



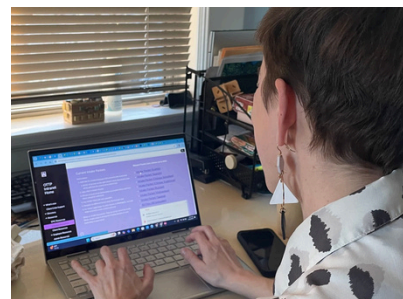
Extracurricular



Life Skills



Vocational Skills



Case Management

ACHIEVEMENTS AND EXPERTISE

CERTIFICATIONS AND LICENSURES

CARF International Accredited



CARF, the Commission on Accreditation of Rehabilitation Facilities, is a private, not-for-profit organization that accredits health and human services programs worldwide. CARF reported that OTTP-SF has a highly qualified and dedicated team with extensive experience, emphasizing the importance of staff retention due to strong professional relationships, teamwork, and quality service delivery to a vulnerable client population. OTTP-SF is CARF certified in both Behavioral Health and the Employment Programs.

IPS Certified

The Individualized Placement and Support model (IPS) is an evidence-based model of supported employment for people with mental illness. It is significantly more impactful than traditional job approaches and employment services, helping individuals to reduce their mental illness symptoms and establish personal independence.



All vocational staff have received IPS certification for course completion and employment supervisors are certified in Supervisory Course Completion.

Licensed Medi-Cal Provider



OTTP-SF proudly achieved a commendable/exceeded expectations rating in Program Deliverables, Program Compliance, and Client Satisfaction in the recent Monitoring Report for Medi-Cal licensure. OTTP-SF is licensed to provide Specialty Mental Health Services for children and youth with an evident commitment to excellence.

Functional Family Therapy

The San Francisco Department of Public Health, Behavioral Health Services division presented an opportunity for Child, Youth, and Family clinics to train psychotherapists in Functional Family Therapy (FFT), an evidence-based family treatment model to support intensive needs of youth from a family-based perspective. Intensive needs include co-occurring mental health and substance use needs, severe depression, and school avoidance. OTTP-SF is delighted to have two clinicians who will be part of a year-long cohort training in this model during 2025.

ACHIEVEMENTS AND EXPERTISE

INTERNSHIPS

In 2024 the Occupational Therapy Training Program hosted a diverse group of student interns, encompassing the fields of social work, counseling, occupational therapy, and psychiatric nursing. OTTP-SF has a university partnership with the 6 establishments below.



OT Doctoral Students' Capstone Projects

Doctoral students in occupational therapy programs complete a major project called a capstone, which involves approximately 500 hours of work. This project gives students the opportunity to focus deeply on a specific area of occupational therapy, analyze what they've learned, and share their findings.

At OTTP-SF, capstone students choose their project based on a combination of their personal interests and ideas collected from our team of clinicians. The project is a collaborative effort between the student, their on-site supervisor at OTTP-SF, and a professor from their program.

By the end of their internship, the student's research is turned into a high-quality, publishable paper and an oral presentation, showcasing their work and its potential impact on the field.

In 2024, the following topics were presented by OTTP-SF interns for their capstone projects:

What are the impacts of Adverse Childhood Experiences (ACEs) on the development of the mind and brain in Black or African American females, and how does it affect their education? - Tamica Edwards, Mental Health Rehabilitation Specialist

Practice-based research was centered on OT services at the Juvenile Justice Center and within the EPIC program.

Creating a handheld proprioceptive and tactile tool to support the impact of self-regulation in the preschool population - Nasjah McKay, Mental Health Rehabilitation Specialist

Produced and tested a handheld tool designed to provide sensory input through touch and body awareness to support self-regulation in children under 5 during sensory exploration groups at an OUSD Early Childhood Center.

Developing and tracking Mental Health OT programs in Alternative Schools - Carrissia Keeling, Mental Health Rehabilitation Specialist & Care Coordinator

In response to SF funding cuts and the need for quick impact reports, OTTP-SF developed a data tracking system to showcase services, support levels, and observed impacts. Carrissia and OT Services Director Teresa Ricardo used this system to demonstrate impact to administrators at a new alternative school after just one season of programming.

ACHIEVEMENTS AND EXPERTISE

OTTP-SF STAFF CONTRIBUTIONS



Teaching Psychosocial OT: Guiding Future Clinicians in Addressing Life's Complexities

From August to December 2024, Shasta Rice, Licensed Occupational Therapist, taught an adjunct course at Dominican University titled *Psychosocial Aspects of Occupation I: Foundations in Psychological Practice* for first-semester doctoral students. In the course, Shasta helped students apply psychosocial OT models by guiding them in using assessments to evaluate skills in social, leisure, sensory, sexual, and activity engagement. Students also facilitated group OT sessions, developed inclusive occupation-based interventions, and honed key skills such as therapeutic listening, rapport-building, and motivational interviewing. The course included case studies on social determinants of health, cultural humility, and interventions for individual, group, and population-level needs, with a particular focus on meaning-making during significant life events like death and dying.

This course is a powerful reminder of the complexity of psychosocial factors in occupational therapy, and how skillfully clinicians navigate these elements in their work at OTTP.

Exploring Mental Health Through a Global Perspective

At OTTP-SF, our mission to empower youth and ensure equitable mental health care comes to life through the exceptional work of our staff. Jacqueline Cantrell, OT Lead and dedicated team member, recently brought her expertise to Ireland, teaching in *The Emerald Asylum: Critical Perspectives on Mental Health in Ireland*.

This course explored the historical and contemporary frameworks of mental health care in Dublin, Waterford, and Cork. Jacqueline and her mentor, Karen McCarthy, guided graduate and undergraduate occupational therapy students in critically examining systemic inequities, prejudice, and the lingering harm of institutionalized care.

Drawing from her work at OTTP-SF, Jacqueline shared anonymized case studies and examples that encouraged students to challenge traditional practices and embrace individualized approaches to care. This teaching experience highlighted the universal challenges of mental health disparities and strengthened Jacqueline's commitment to creative, tailored solutions—core values of OTTP-SF.

Jacqueline's journey reinforces the vital role of adaptable mental health care. Donor support empowers our team to meet youth and families where they are instead of where social expectations assert where they "should" be, offering services that truly make a difference.



ACHIEVEMENTS AND EXPERTISE

OTTP-SF STAFF CONTRIBUTIONS

Empowering Youth Through Workplace Safety

OTTP-SF clinicians are deeply committed to helping youth build the skills needed for personal, educational, and vocational success. Carrissia Keeling, Mental Health Rehabilitation Specialist, who works with adolescents and transitional-aged youth, recently collaborated with a social worker and nurse at El Camino High School in San Francisco to host a Workplace Safety Day simulation. During this event, students created first aid kits and participated in stations focused on construction, cooking, and janitorial work—fields many of the students are involved in. The simulation allowed students to practice identifying hazards, develop self-advocacy skills, learn about body ergonomics, receive basic first aid training, and engage in discussions about workers' rights and what to do if injured on the job.



Carrissia's initiative demonstrates OTTP-SF's dedication to empowering youth with the tools and knowledge to succeed in both their personal and professional lives.

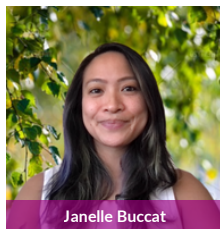


Emily Tunnat

Educating Future OTs: Supporting Youth in the Juvenile Justice System

Emily Tunnat and Janelle Buccat are community-based OTs and Program Managers at OTTP-SF, working at the Juvenile Justice Center (JJC) in Alameda and San Francisco. They provide mental health support to youth in detention and those transitioning back to the community after serving their sentences.

In November 2024, Emily and Janelle delivered a guest lecture on *OT & Substance Use Treatment* to occupational therapy students at San Jose State University. The presentation covered barriers to accessing treatment, explored a case study of an incarcerated youth, and discussed treatment planning, interventions, and the role of OTs in supporting clients' progress and providing resources upon discharge.



Janelle Buccat

Emily and Janelle's dedication to educating future occupational therapists on supporting youth in the juvenile justice system underscores OTTP's commitment to empowering youth, regardless of their circumstances.

Advancing Clinical Leadership and Equity in Occupational Therapy

Marion Wise, LCSW, is the Clinical Director of OTTP-SF. As a member of the senior leadership team, Marion plays a pivotal role in strategic planning, program administration, and development. She provides clinical oversight and supervision to mental health program managers, clinical supervisors, and clinicians.

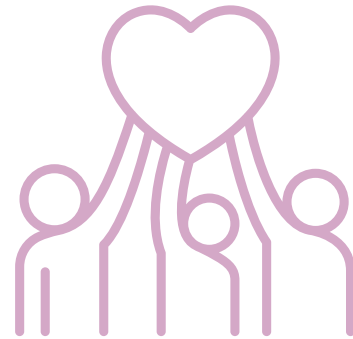
Marion's dedication to equity and inclusion extends beyond her work at OTTP-SF. In May 2024, her groundbreaking research titled *"Every day you are working you have to prove it": Navigating the costs of work and ableism with visual impairment"* was published. Her study sheds light on the barriers faced by visually impaired individuals in the workforce, emphasizing the need for policy interventions to reduce ableism and improve access to vocational rehabilitation services. Marion's impactful work exemplifies OTTP-SF's commitment to empowering underserved communities.



IMPACTS

JOB PLACEMENTS

In 2024, OTTP-SF reached an impressive milestone in its Employment Program, experiencing a 44% increase in job placements compared to the previous year. This accomplishment underscores the program's effectiveness in fostering long-term employment success for participants using the IPS model. Youth Clients found work in retail, food services, security, and more.



*OTTP-SF serves approximately
1,000 youth annually.*

EVERLANE



SFUSD SAN FRANCISCO
PUBLIC SCHOOLS

amazon



See's
CANDIES®



PartyCity

IMPACTS

TESTIMONIALS

What our partner programs have to say about OTTP-SF:

"OTTP is calm, positive, and offers affirming interactions with our students to help them feel safe to open up. They are knowledgeable, empathetic, non-judgmental, accepting and true respectful listener to clients and teachers. "

-Toni Allen, Regular Education Teacher at Bayview C.A.R.E. Middle School

"OTTP works to meet all partner needs, including those of the school site staff/teachers who are often new to teaching, case management, etc. OTTP really shows up for us! Meta (OTTP Psychotherapist) has been instrumental in helping Denman weather 100% SOAR staff turnover from 1 year to the next, and not only helped us survive but our kids and staff are thriving!"

-Jenny Ujiie, Principal at James Denman Middle School

"OTTP provides highly impactful services to children and youth in the Bay Area. Their services are invaluable to the communities that they serve and I am very proud to advocate for both the youth they serve and for the services their clinicians provide."

-Helen Mirsaeidi, Doctor of Occupational Therapy (OTD), Licensed Occupational Therapist (OTR/L), Certified Respiratory Therapist (CRT)
Senior O. T. at Kaiser Permanente and OTTP-SF Advisory Board Member

"The perspective and the way you all look at youth is wonderful...we often limit our view of youth to their behaviors and don't see their strengths and trajectory youth can have in the community, and OTTP does a beautiful job of focusing on that and putting words to it."

-An official from Alameda County Probation Department leadership

"[OTTP] are the experts in showing what skills building looks like over time."

-Partners from the San Francisco Juvenile Probation Department (JPD) and the Department of Children, Youth, & Their Families (DCYF)

IMPACTS

DONOR IMPACTS

Your generosity empowers OTTP-SF to allocate donor funds towards essential resources, addressing diverse client needs not typically supported. This commitment to holistic support amplifies our dedication to enhancing the lives of program participants by fulfilling crucial aspects of their journey.



CRITICAL CLIENT NEEDS



EMERGENCY PROGRAM FUNDING



YOUTH INCENTIVE PROGRAMS



ESSENTIAL APPLICATION/LICENSE FEES



TRANSPORTATION



INTERVENTION/ THERAPEUTIC SUPPLIES



VOCATIONAL SUPPORT



EXTRACURRICULAR

IMPACTS

DONOR IMPACTS

Thanks to a combined donation of over 500 flowers from Diablo Foods in Lafayette, courtesy of Shaun Robinson, Floral Department Manager, and from donor Joanne Mosellen, OTTP-SF was able to offer a unique therapeutic experience to youth at the Alameda County Juvenile Justice Center (JJC).

The flower arranging activity, led by two OTTP-SF clinicians, provided an opportunity for the boys and girls units to engage in a hands-on, sensory activity designed to promote healing and personal growth.

As part of the activity, youth were encouraged to select and arrange flowers into bouquets, focusing on color coordination, symmetry, and the sensory experience of handling living, natural materials. In an environment with limited access to the outside world, this activity allowed the youth to connect with nature, bringing colors and scents into the space and helping to foster a calming, soothing atmosphere.

Flower arranging helped promote emotional regulation by reducing stress and anxiety, while fostering creativity and self-expression. It also boosted self-esteem and confidence, and encouraged social skills development as participants worked together, practiced teamwork, and communicated—skills essential for reintegration into society.

Donations like this provide invaluable experiences for the youth at the JJC—opportunities they may otherwise never have the chance to enjoy. OTTP-SF is deeply grateful for the support from the community that makes these healing activities possible.



From L to R: Alina Lareybi (OTTP-SF Occupational Therapist) & Joanne Mosellen



Shaun Robinson, Floral Department Manager at Diablo Foods

IMPACTS

CLIENT TRANSFORMATIONS

Small Victories

At OTTP-SF, success isn't just about major milestones—it's about the everyday victories that empower youth to navigate the world with confidence.

Paige Thomson, an OTTP Occupational Therapist, worked with a young client who had sensory sensitivities and social anxiety, and was faced with the significant challenge of renewing his passport. The post office, with its loud, crowded, and unpredictable environment, quickly became overwhelming and dysregulating for the client. When this particular youth feels dysregulated, he shuts down and becomes unable to engage in conversation, often retreating into his phone to block out everything else. In the past, attempts to take a passport photo had also failed due to the stress of being in the spotlight and the difficulty of following multi-step instructions.

Recognizing his growing anxiety upon arrival, Paige provided a ****calm, grounding presence****, using therapeutic strategies to support his regulation. When conventional techniques didn't work, she tapped into his passion for Dungeons & Dragons, instructing him to stare at the camera as if someone on the other side was talking smack about his beloved character. The shift in focus worked instantly—he took the photo successfully.

This moment, while seemingly small, reflects the ****transformative impact of OTTP therapists****. By adapting interventions to each youth's unique strengths and interests, they equip young people with the tools to overcome real-world obstacles, building resilience and self-efficacy one step at a time.



CORPORATE PARTNERS

Thank you to our 2024 corporate partners! Through their partnerships, OTTP-SF continues to provide mental health services to Bay Area youth who need it most!



Realize CPA is a team of highly accomplished, professional accountants who provide the balance, precision, and expertise you need to reach your personal and business tax goals. Located in San Francisco.



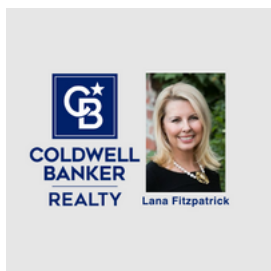
As the first-ever website experience platform, **Webflow** lets marketers, designers, and developers come together to build, manage, and optimize web experiences that get results. Located in San Francisco.



Kirsti and Bryant Chou Family Fund



Mark's Paint Mart is a Benjamin Moore Paint Store that provides color and design expertise to assist you in creating beautiful interiors and exteriors. Located in Oakland & Lafayette.



At **Coldwell Banker Realty**, **Lana Fitzpatrick** is focused on promoting clients' interests and building healthy and lasting relationships to help fulfill all of your real estate needs. Located in Orinda.



VMware by Broadcom combines global scale, engineering depth, broad product portfolio diversity, superior execution and operational focus to deliver software solutions so its customers can build and grow successful businesses in a constantly changing environment. Located in Palo Alto.

HOW YOU CAN HELP

Whether you're a corporate sponsor or an individual donor, your continued support fuels our mission. Together, let's make 2025 a year of positive change and growth. Join us in making mental health support accessible to all. Cheers to progress and shared victories!

GET INVOLVED



SPONSOR

For corporate sponsorship opportunities, contact tracy.feldman@ottp-sf.org



VOLUNTEER

To learn about the unique ways to support OTTP-SF with your time, contact info@ottp-sf.org



FOLLOW

Join our social media community



DONATE

ottp-sf.org/donate

CONTACT



98 Bosworth Street
San Francisco, CA 94112

384 34th Street
Oakland, CA 94609

501c3 # 95-1716914

Email: info@ottp-sf.org
Phone: (415) 551-0975

www.ottp-sf.org

FOLLOW US ONLINE



@OTTP.SF



@ottpsf



@ottp-sf