



CRAFT COUNCIL GALLERY 2027-2028 EXHIBITIONS

CALL FOR PROPOSALS

Deadline: September 1st, 2026



Michael Flaherty (2023)



ABOUT US

The Craft Council Gallery champions the spirit of fine craft in Newfoundland and Labrador. Through exhibitions, education, and community engagement, we create meaningful opportunities for established artists, foster creativity among emerging makers, and elevate the presence of fine craft as a vital part of our cultural identity. We are dedicated to building a sustainable organization that can continue to nurture creativity, connection, and excellence in craft for years to come.

CALL FOR PROPOSALS

We invite artists, groups of artists, and curators to submit exhibition proposals to take place at the Craft Council Gallery between January 2027 and March 2028. Chosen exhibitions will demonstrate profound artistic vision, outstanding visitor experience, and excellence in fine craft.

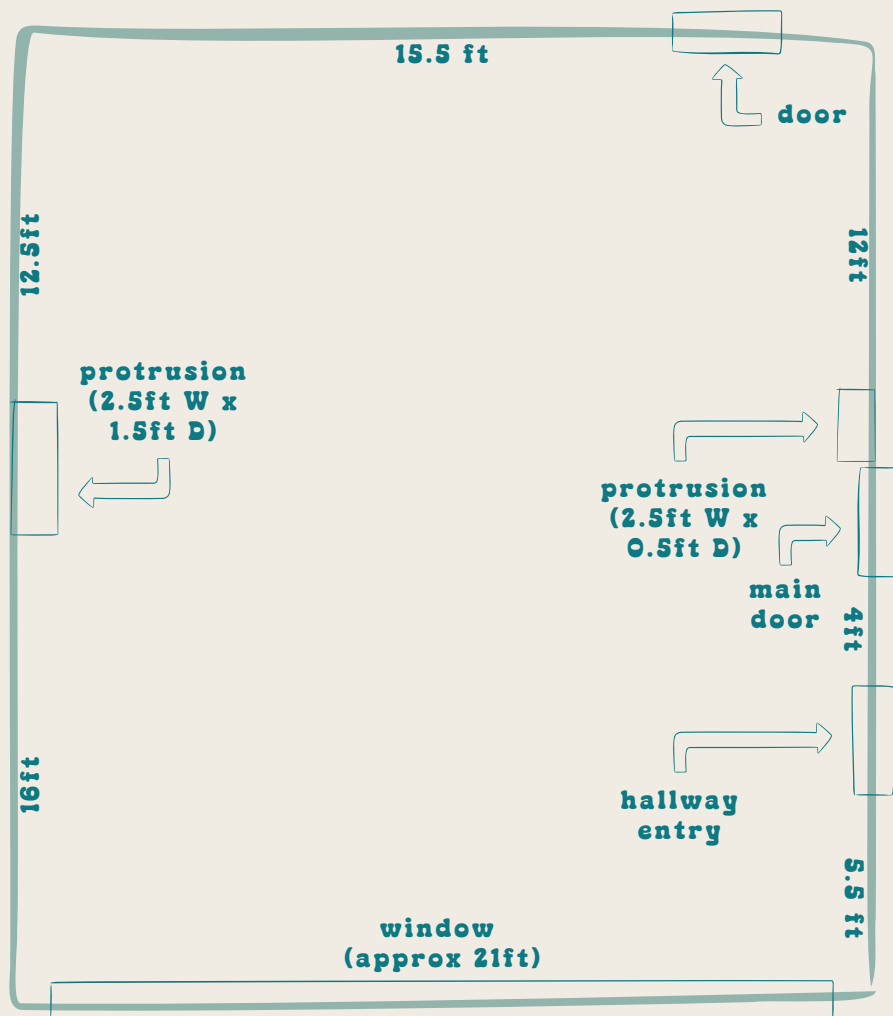
Please read the instructions and requirements carefully, as incomplete applications will not be considered. If you have any questions do not hesitate to contact us prior to the deadline.





THE GALLERY

The Gallery is approximately 21ft by 31ft in size, and qualifies as a Category I space under CARFAC guidelines. A large window spans the length of one 21ft wall. There are 3 doorways (two with swinging doors and 1 opening to a hallway) and 2 wall protrusions.



SUBMISSION REQUIREMENTS

The exhibition proposal submission link can be found below. The following information will be required.

- Name
- Artist Bio & Headshot
- CV/Resume
- Permanent Mailing Address
- Contact Info (telephone, email)
- Exhibition Title
- Artist Statement
- Description, Materials, Techniques
- Installation Specifications **(please read below)**
- Retail Value
- High-Quality Photos

Installation Specifications

Preferred installation options include:

1. Plinths (some display props available)
2. Mannequins (hanging or standing)
3. Gallery-quality hanging system
 - a. For quilts and rugs, a rod and sleeve are required.
 - b. For framed pieces, two D-hooks positioned approximately 1.5-2 inches from the top of the frame are recommended.
 - c. Other display methods will be considered on a case-by-case basis.

Please do not hesitate to contact us if you have any questions regarding display specifications.

[click here for submission form](#)



Contact Us

Kaitlyn Warren
gallery@craftcouncil.nl.ca

