

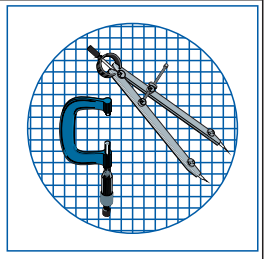


Montreal ~ Toronto ~ Vancouver ~ Cincinnati

www.bmicanada.com

1-800-361-1452

1-800-561-8579

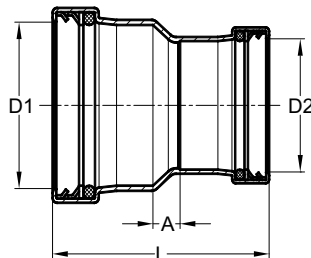
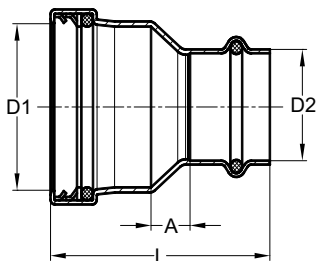
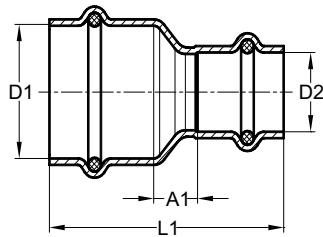
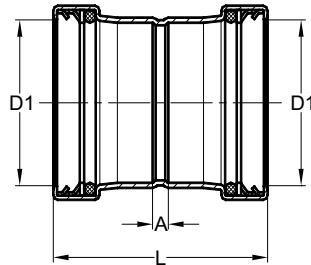
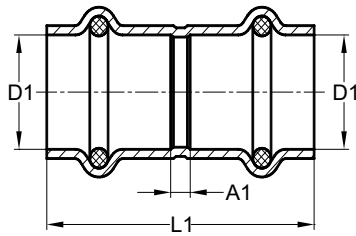


TECHNICAL INFORMATION

PRESS-FIT WROT COPPER FITTINGS



PRESS-FIT WROUGHT COPPER FITTINGS



Dot Stop Couplings

BMI#	SIZE (D1)	L1 (mm)	A1 (mm)	Kg
47004	1/2	41,0	3,0	0,037
47005	3/4	52,0	4,0	0,059
47006	1	52,0	4,0	0,074
47007	1 1/4	62,0	4,0	0,099
47008	1 1/2	77,0	4,0	0,210
47009	2	85,0	4,0	0,276

BMI#	SIZE (D1)	L (mm)	A (mm)	Kg
47010	2 1/2	95,0	7,0	0,493
47011	3	111,0	9,0	0,658
47012	4	132,0	10,0	1,101

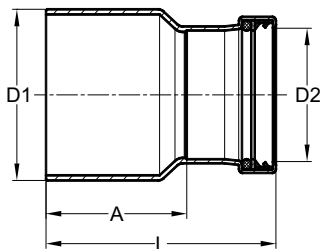
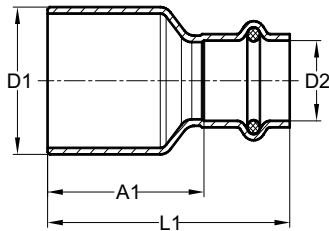
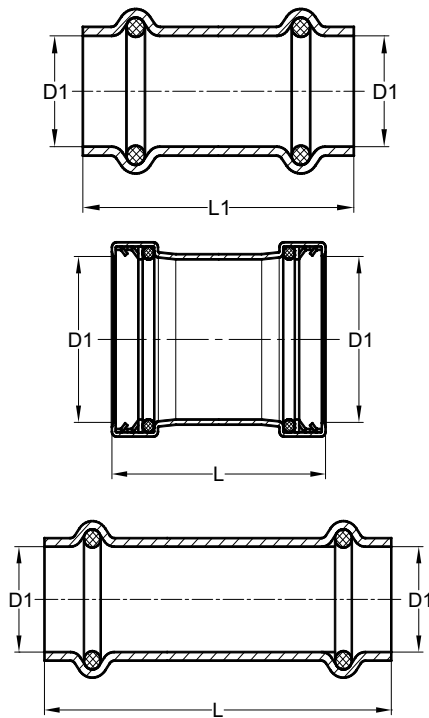
Reducing Couplings

BMI#	SIZE (D1xD2)	L1 (mm)	A1 (mm)	Kg
47023	3/4 x 1/2	53,5	9,0	0,056
47027	1 x 3/4	57,0	9,0	0,081
47028	1 x 1/2	57,5	13,0	0,072
47031	1 1/4 x 1	63,5	10,5	0,103
47032	1 1/4 x 3/4	67,5	14,5	0,109
47033	1 1/4 x 1/2	68,0	18,5	0,097
47035	1 1/2 x 1 1/4	78,0	12,0	0,176
47036	1 1/2 x 1	77,0	16,0	0,172
47037	1 1/2 x 3/4	82,0	21,0	0,177
47038	1 1/2 x 1/2	83,0	23,5	0,168
47040	2 x 1 1/2	95,5	17,5	0,289
47041	2 x 1 1/4	91,0	21,0	0,248
47042	2 x 1	90,0	25,0	0,211
47043	2 x 3/4	95,5	30,5	0,247
47044	2 x 1/2	98,0	34,5	0,213

BMI#	SIZE (D1xD2)	L (mm)	A (mm)	Kg
47046	2 1/2 x 2	108,0	25,0	0,525
47047	2 1/2 x 1 1/2	110,5	31,5	0,493
47048	2 1/2 x 1 1/4	105,5	34,5	0,386
47049	2 1/2 x 1	104,0	38,0	0,450

BMI#	SIZE (D1xD2)	L (mm)	A (mm)	Kg
47051	3 x 2 1/2	118,0	25,0	0,787
47052	3 x 2	121,5	31,5	0,716
47056	4 x 3	140,5	30,5	1,267
47057	4 x 2 1/2	140,0	37,0	1,211
47058	4 x 2	143,5	43,5	1,121

PRESS-FIT WROUGHT COPPER FITTINGS



No Stop Couplings

BMI#	SIZE (D1)	L1 (mm)	Kg
47074	1/2	43,0	0,037
47075	3/4	52,0	0,059
47076	1	52,0	0,074
47077	1 1/4	62,0	0,099
47078	1 1/2	77,0	0,210
47079	2	85,0	0,276

BMI#	SIZE (D1)	L (mm)	Kg
47080	2 1/2	110,0	0,545
47081	3	125,0	0,755

Long Repair Couplings

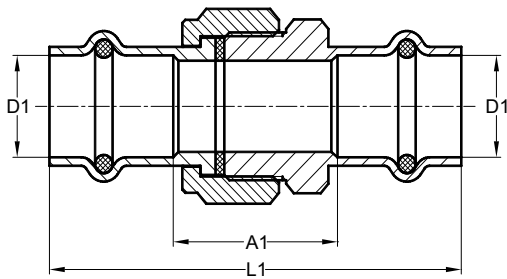
BMI#	SIZE (D1)	L (mm)	Kg
47084	1/2	76,0	0,090
47085	3/4	90,0	0,148
47086	1	95,0	0,185
47087	1 1/4	105,0	0,275
47088	1 1/2	120,0	0,538
47089	2	135,0	0,685

FTG x P Bushings

BMI#	SIZE (D1xD2)	L1 (mm)	A1 (mm)	Kg
47123	3/4 x 1/2	54,5	34,0	0,049
47127	1 x 3/4	57,0	33,0	0,068
47128	1 x 1/2	59,0	38,5	0,061
47131	1 1/4 x 1	64,0	40,0	0,084
47132	1 1/4 x 3/4	67,0	43,0	0,089
47133	1 1/4 x 1/2	67,0	46,5	0,076
47135	1 1/2 x 1 1/4	77,0	48,0	0,132
47136	1 1/2 x 1	75,0	51,0	0,134
47137	1 1/2 x 3/4	79,0	55,0	0,125
47138	1 1/2 x 1/2	77,0	56,5	0,144
47140	2 x 1 1/2	94,0	57,0	0,248
47141	2 x 1 1/4	91,0	62,0	0,209
47142	2 x 1	90,0	66,0	0,208
47143	2 x 3/4	95,0	71,0	0,242
47144	2 x 1/2	93,0	72,5	0,243

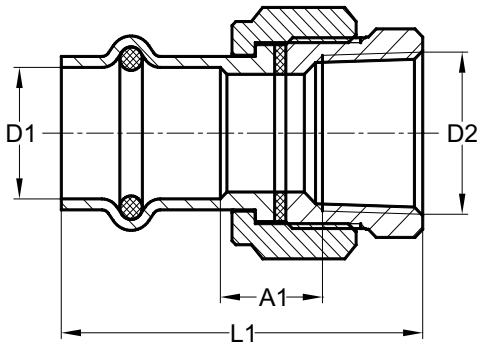
BMI#	SIZE (D1xD2)	L (mm)	A (mm)	Kg
47146	2 1/2 x 2	108,0	67,0	0,411
47147	2 1/2 x 1 1/2	109,0	72,0	0,398
47148	2 1/2 x 1 1/4	103,0	74,0	0,362
47149	2 1/2 x 1	108,0	84,0	0,358
47151	3 x 2 1/2	115,0	72,0	0,628
47152	3 x 2	122,0	81,0	0,549
47153	3 x 1 1/2	125,0	88,0	0,549
47154	3 x 1 1/4	115,0	86,0	0,502
47156	4 x 3	145,0	95,0	1,141
47157	4 x 2 1/2	147,0	104,0	1,108
47158	4 x 2	157,0	116,0	1,059

PRESS-FIT WROUGHT COPPER FITTINGS



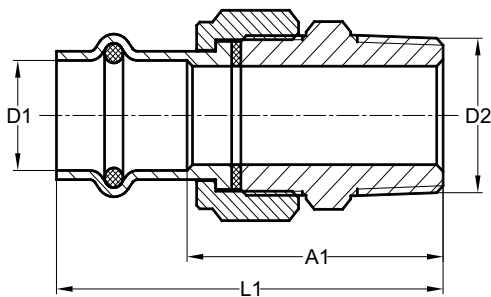
Unions

BMI#	SIZE (D1)	L1 (mm)	A1 (mm)	Kg
47104	1/2	71,0	30,0	0,150
47105	3/4	76,0	28,0	0,222
47106	1	76,5	28,5	0,390
47107	1 1/4	87,0	29,0	0,485
47108	1 1/2	104,0	30,0	0,799
47109	2	116,0	34,0	1,266



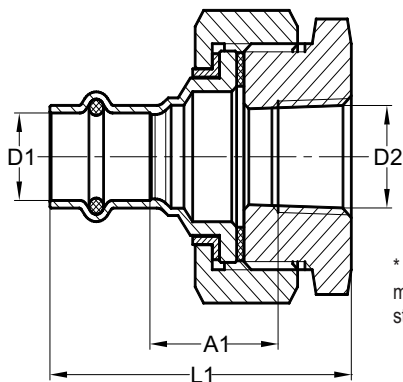
P x FIPS Unions

BMI#	SIZE (D1xD2)	L1 (mm)	A1 (mm)	Kg
47614	1/2	50,5	17,0	0,132
47615	3/4	54,5	15,5	0,186
47616	1	57,5	16,5	0,363
47617	1 1/4	74,5	25,5	0,440
47618	1 1/2	74,0	17,0	0,758
47619	2	84,0	19,0	1,293



P x MIPS Unions

BMI#	SIZE (D1xD2)	L1 (mm)	A1 (mm)	Kg
47624	1/2	65,5	45,0	0,141
47625	3/4	69,0	45,0	0,222
47626	1	73,5	49,5	0,404
47627	1 1/4	83,0	54,0	0,513
47628	1 1/2	92,0	55,0	0,726
47629	2	101,0	60,0	1,261

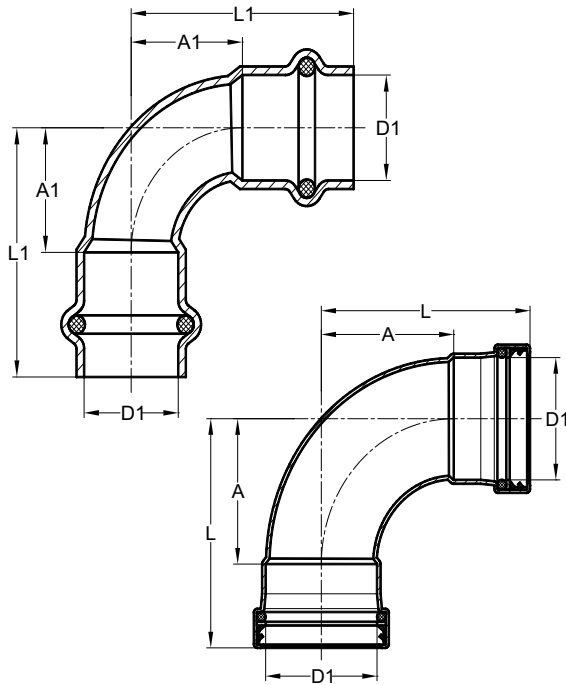


* This product is partially made of zinc plated forge steel alloy

P x FIPS Dielectric Unions

BMI#	SIZE (D1xD2)	L1 (mm)	A1 (mm)	Kg
47194	1/2	67,0	33,5	0,140
47195	3/4	78,0	39,0	0,225
47196	1	70,0	29,0	0,403
47197	1 1/4	77,0	28,0	0,513
47198	1 1/2	88,0	31,0	0,726
47199	2	96,0	31,0	1,290

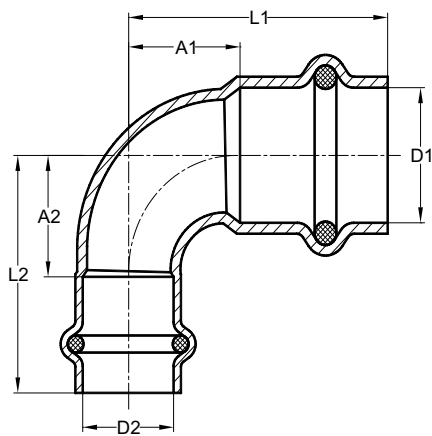
PRESS-FIT WROUGHT COPPER FITTINGS



Elbows 90°

BMI#	SIZE (D1)	L1 (mm)	A1 (mm)	Kg
47304	1/2	39,5	19,0	0,054
47305	3/4	51,0	27,0	0,090
47306	1	58,0	34,0	0,131
47307	1 1/4	68,0	39,0	0,184
47308	1 1/2	83,0	46,0	0,358
47309	2	102,0	61,0	0,548

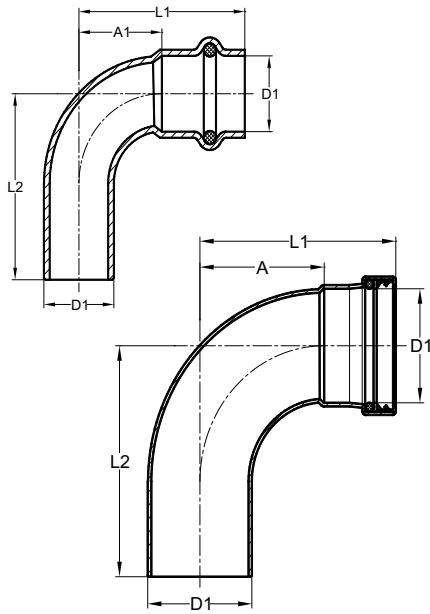
BMI#	SIZE (D1)	L (mm)	A (mm)	Kg
47310	2 1/2	124,0	81,0	0,951
47311	3	145,5	95,5	0,953
47312	4	184,5	124,5	2,549



Reducing Elbows 90°

BMI#	SIZE (D1xD2)	L1 (mm)	A1 (mm)	L2 (mm)	A2 (mm)	Kg
47323	3/4 X 1/2	46,5	22,5	44,5	24,0	0,088
47327	1 X 3/4	58,5	34,5	51,0	27,0	0,135

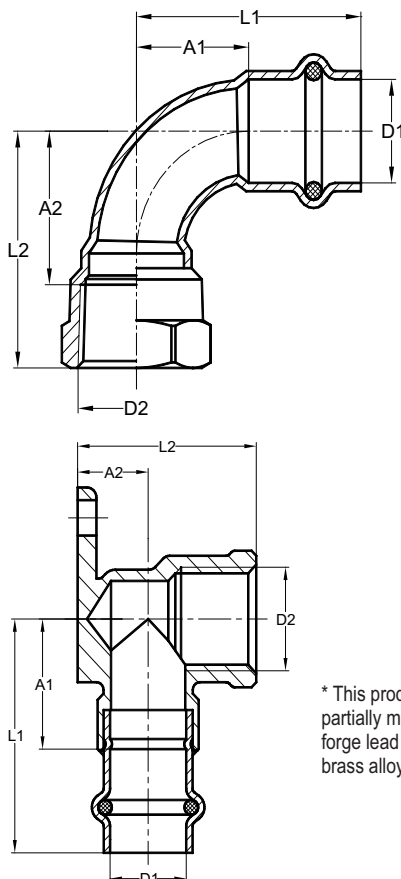
PRESS-FIT WROUGHT COPPER FITTINGS



FTG x P Elbows 90°

BMI#	SIZE (D1)	L1 (mm)	A1 (mm)	L2 (mm)	Kg
47354	1/2	39,5	19,0	44,0	0,050
47355	3/4	51,5	27,5	54,0	0,084
47356	1	57,0	33,0	60,0	0,125
47357	1 1/4	67,0	38,0	74,5	0,187
47358	1 1/2	82,0	45,0	90,0	0,347
47359	2	96,0	55,0	109,0	0,526

BMI#	SIZE (D1)	L1 (mm)	A1 (mm)	L2 (mm)	Kg
47360	2 1/2	124,0	81,0	136,0	0,931
47361	3	145,5	95,5	159,0	1,379
47362	4	184,5	124,5	199,0	2,585



P x FIPS Elbows 90°

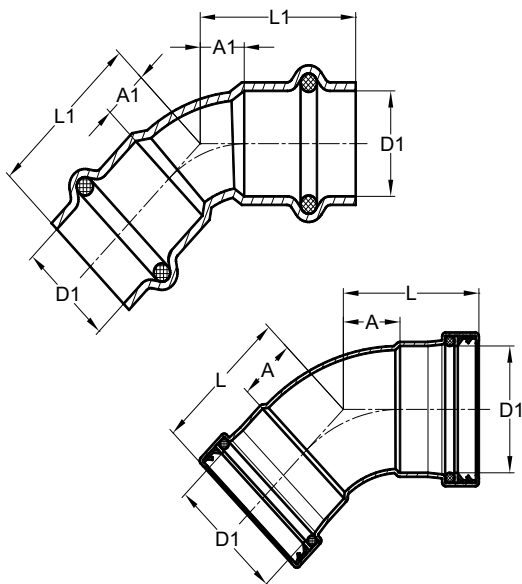
BMI#	SIZE (D1xD2)	L1 (mm)	A1 (mm)	L2 (mm)	A2 (mm)	Kg
47384	1/2 x 1/2 FIPS	44,0	23,5	46,0	33,0	0,069
47385	3/4 x 3/4 FIPS	51,5	27,5	53,0	38,0	0,135

P x FIPS Dropear Elbows 90°

BMI#	SIZE (D1xD2)	L1 (mm)	A1 (mm)	L2 (mm)	A2 (mm)	Kg
47399	1/2 x 1/2 FIPS	45,0	24,0	38,0	15,0	0,132
47398	3/4 x 3/4 FIPS	54,0	30,0	45,0	19,0	0,184

* This product is partially made of forge lead free brass alloy

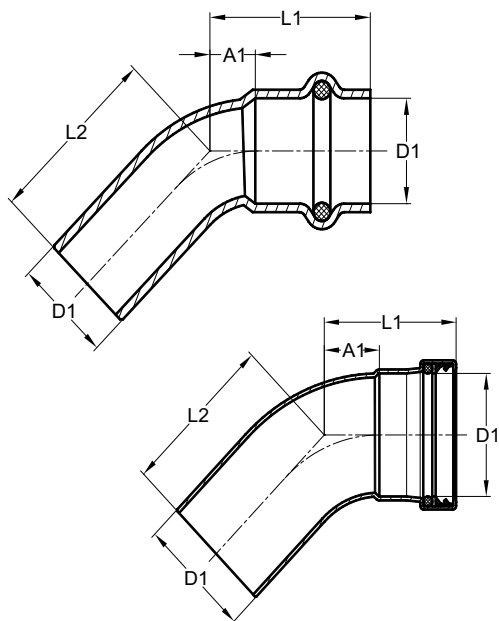
PRESS-FIT WROUGHT COPPER FITTINGS



Elbows 45°

BMI#	SIZE (D1)	L1 (mm)	A1 (mm)	Kg
47204	1/2	28,0	7,5	0,044
47205	3/4	35,5	11,5	0,074
47206	1	36,0	12,0	0,098
47207	1 1/4	50,0	21,0	0,140
47208	1 1/2	58,5	21,5	0,274
47209	2	62,0	21,0	0,394

BMI#	SIZE (D1)	L (mm)	A (mm)	Kg
47210	2 1/2	81,0	38,0	0,789
47211	3	94,0	44,0	1,030
47212	4	117,5	57,5	1,865

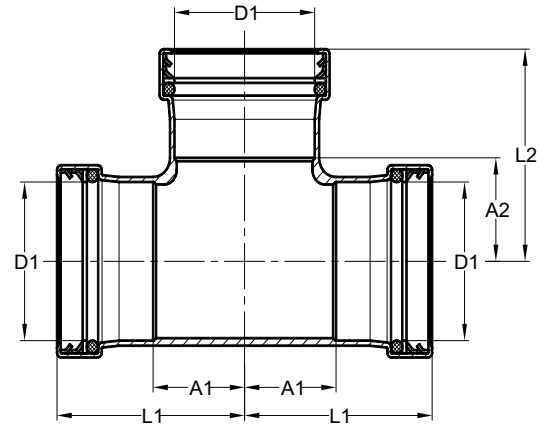
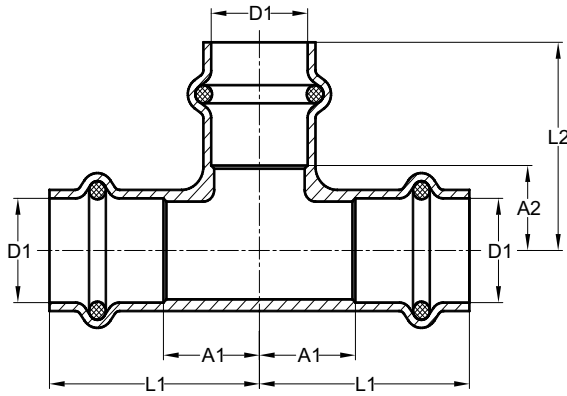


FTG x P Elbows 45°

BMI#	SIZE (D1)	L1 (mm)	A1 (mm)	L2 (mm)	Kg
47254	1/2	28,0	7,5	31,0	0,041
47255	3/4	35,5	11,5	37,0	0,069
47256	1	38,5	14,5	40,0	0,095
47257	1 1/4	50,0	21,0	48,5	0,134
47258	1 1/2	58,5	21,5	60,0	0,262
47259	2	62,0	21,0	70,0	0,381

BMI#	SIZE (D1)	L1 (mm)	A1 (mm)	L2 (mm)	Kg
47260	2 1/2	81,0	38,0	91,0	0,711
47261	3	94,0	44,0	104,0	1,054
47262	4	117,5	57,5	129,0	1,795

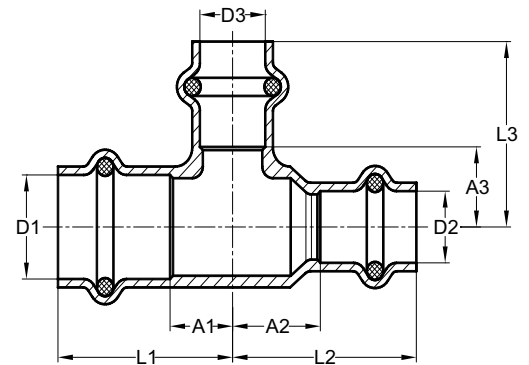
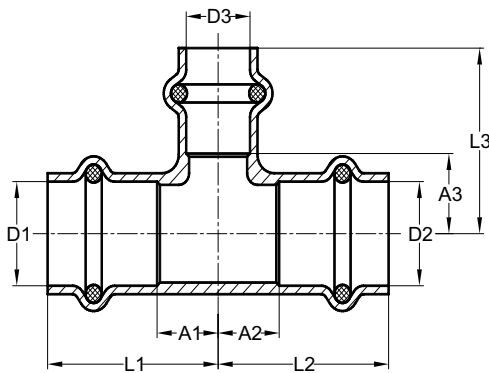
PRESS-FIT WROUGHT COPPER FITTINGS



Tees

BMI#	SIZE (D1)	L1 (mm)	A1 (mm)	L2 (mm)	A2 (mm)	Kg
47404	1/2	39,5	19,0	32,5	12,0	0,097
47405	3/4	45,5	21,5	40,5	16,5	0,158
47406	1	48,5	24,5	44,0	20,0	0,231
47407	1 1/4	54,0	25,0	50,0	21,0	0,301
47408	1 1/2	66,5	29,5	70,0	33,0	0,554
47409	2	76,0	35,0	80,0	39,0	0,783

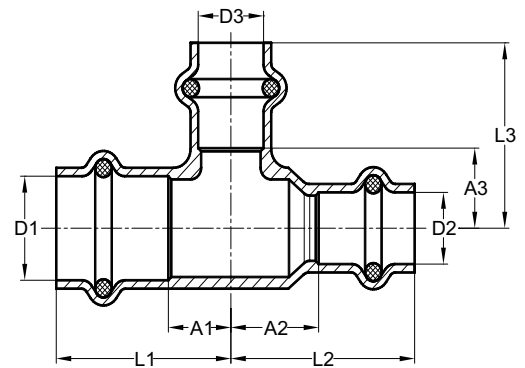
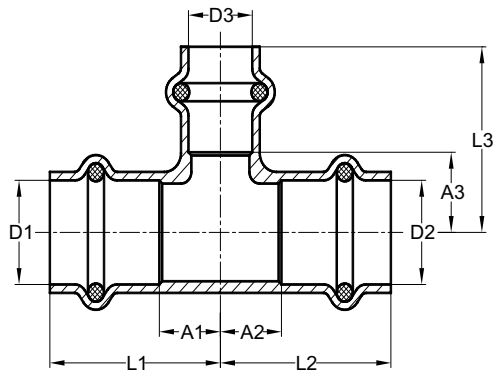
BMI#	SIZE (D1)	L1 (mm)	A1 (mm)	L2 (mm)	A2 (mm)	Kg
47410	2 1/2	89,5	46,5	92,0	49,0	0,965
47411	3	103,0	52,5	106,0	56,0	1,366
47412	4	126,0	66,0	129,0	69,0	2,485



Reducing Tees

BMI#	SIZE (D1xD2xD3)	L1 (mm)	A1 (mm)	L2 (mm)	A2 (mm)	L3 (mm)	A3 (mm)	Kg
47419	1/2 x 1/2 x 1	56,5	36	56,5	36	44	20	0,145
47420	1/2 x 1/2 x 3/4	43,5	23	43,5	23	39	15	0,132
47428	3/4 x 3/4 x 1	48,5	24,5	48,5	24,5	51,5	27,5	0,181
47429	3/4 x 3/4 x 1/2	41,5	17,5	41,5	17,5	36,5	16	0,132
47430	3/4 x 1/2 x 3/4	45,5	21,5	47,5	27	40,5	16,5	0,150
47431	3/4 x 1/2 x 1/2	41,5	17,5	44,5	24	36,5	16	0,126
47437	1 x 1 x 1 1/4	49	25	49	25	59	30	0,465
47438	1 x 1 x 3/4	45,5	21,5	45,5	21,5	44	20	0,206
47439	1 x 1 x 1/2	41,5	17,5	41,5	17,5	40,5	20	0,186
47442	1 x 3/4 x 1	48,5	24,5	55	31	44	20	0,219
47443	1 x 3/4 x 3/4	45,5	21,5	51	27	44	20	0,183
47445	1 x 3/4 x 1/2	41,5	17,5	48,5	24,5	40,5	20	0,167
47448	1 x 1/2 x 1	48,5	24,5	56,5	36	44	20	0,218
47449	1 x 1/2 x 3/4	45,5	21,5	54	33,5	44	20	0,181
47450	1 x 1/2 x 1/2	41,5	17,5	51	30,5	40,5	20	0,161

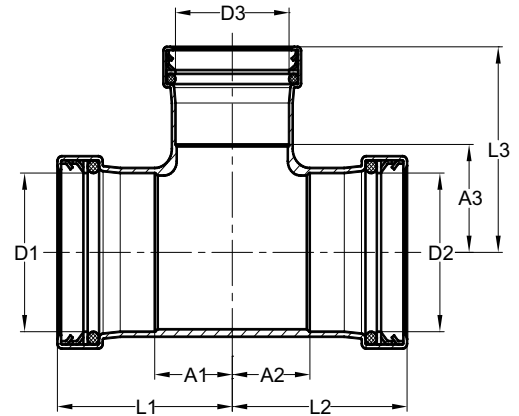
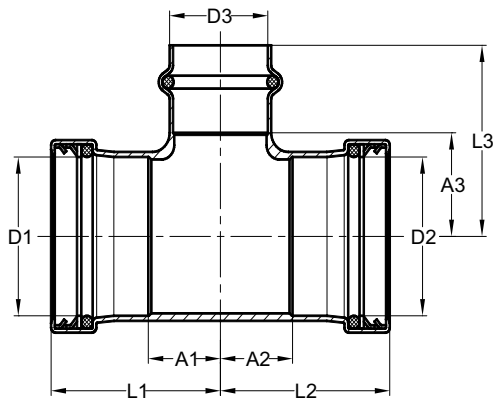
PRESS-FIT WROUGHT COPPER FITTINGS



Reducing Tees

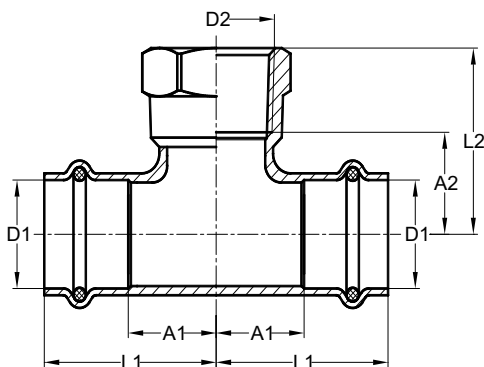
BMI#	SIZE (D1xD2xD3)	L1 (mm)	A1 (mm)	L2 (mm)	A2 (mm)	L3 (mm)	A3 (mm)	Kg
47453	1 1/4 x 1 1/4 x 1	50,5	21,5	50,5	21,5	52	28	0,256
47454	1 1/4 x 1 1/4 x 3/4	47,5	18,5	47,5	18,5	50	26	0,228
47455	1 1/4 x 1 1/4 x 1/2	45	16	45	16	49	28,5	0,205
47458	1 1/4 x 1 x 1	50,5	21,5	56,5	32,5	52	28	0,341
47459	1 1/4 x 1 x 3/4	47,5	18,5	53,5	29,5	50	26	0,319
47460	1 1/4 x 1 x 1/2	45	16	53	29	49	28,5	0,296
47461	1 1/4 x 3/4 x 1 1/4	54	25	62	38	50	21	0,388
47462	1 1/4 x 3/4 x 1	50,5	21,5	60,5	36,5	52	28	0,353
47463	1 1/4 x 3/4 x 3/4	47,5	18,5	58	34	50	26	0,331
47465	1 1/4 x 1/2 x 1 1/4	54	25	66,5	46	56	21	0,367
47471	1 1/2 x 1 1/2 x 1 1/4	60,5	23,5	60,5	23,5	57	28	0,483
47472	1 1/2 x 1 1/2 x 1	57,5	20,5	57,5	20,5	53	29	0,416
47473	1 1/2 x 1 1/2 x 3/4	54	17	54	17	53	29	0,382
47474	1 1/2 x 1 1/2 x 1/2	49	12	49	12	48,5	28	0,341
47476	1 1/2 x 1 1/4 x 1 1/4	60,5	23,5	64,5	35,5	57	28	0,564
47477	1 1/2 x 1 1/4 x 1	57,5	20,5	59,5	30,5	53	29	0,533
47478	1 1/2 x 1 1/4 x 3/4	54	17	58	29	53	29	0,503
47480	1 1/2 x 1 x 1 1/2	66,5	29,5	68,5	44,5	70	33	0,663
47482	1 1/2 x 1 x 1	57,5	20,5	60,5	36,5	53	29	0,521
47483	1 1/2 x 1 x 3/4	54	17	60	36	53	29	0,492
47491	2 x 2 x 1 1/2	70,5	29,5	70,5	29,5	76	39	0,693
47495	2 x 2 x 1 1/4	67,5	26,5	67,5	26,5	66	37	0,605
47496	2 x 2 x 1	64,5	23,5	64,5	23,5	62	38	0,581
47497	2 x 2 x 3/4	61,5	20,5	61,5	20,5	61	37	0,542
47498	2 x 2 x 1/2	61,5	20,5	61,5	20,5	64	43,5	0,447
47516	2 x 1 1/2 x 2	76	35	87	50	80	39	0,994
47517	2 x 1 1/2 x 1 1/2	70,5	29,5	82,5	45,5	76	39	0,893
47518	2 x 1 1/2 x 1 1/4	67,5	26,5	78,5	41,5	66	37	0,829
47519	2 x 1 1/2 x 1	64,5	23,5	74,5	37,5	62	38	0,785
47520	2 x 1 1/2 x 3/4	61,5	20,5	72,5	35,5	61	37	0,773
47523	2 x 1 1/4 x 1 1/4	67,5	26,5	73,5	44,5	66	37	0,784
47525	2 x 1 x 2	76	35	94	70	80	39	0,450
47527	2 x 1 x 1	67,5	23	66,5	45,5	62	38	0,731
47529	2 x 3/4 x 2	76	35	97	73	80	39	0,531
47532	2 x 1/2 x 2	76	35	83	62	80	39	0,437

PRESS-FIT WROUGHT COPPER FITTINGS



Reducing Tees

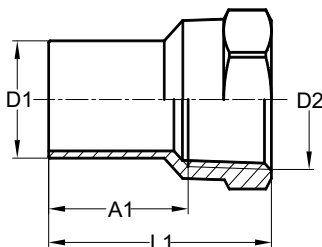
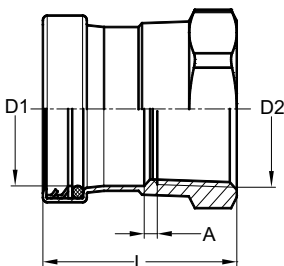
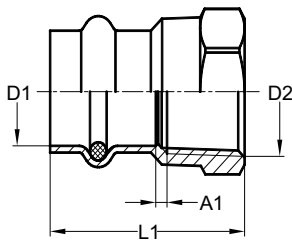
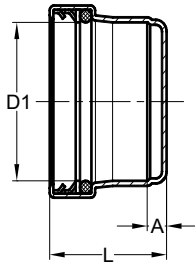
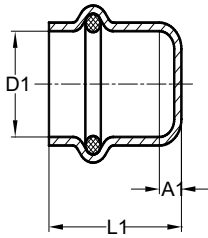
BMI#	SIZE (D1xD2xD3)	L1 (mm)	A1 (mm)	L2 (mm)	A2 (mm)	L3 (mm)	A3 (mm)	Kg
47534	2 1/2 x 2 1/2 x 2	82	39	82	39	89	49	0,965
47535	2 1/2 x 2 1/2 x 1 1/2	82	39	82	39	102	66	0,872
47536	2 1/2 x 2 1/2 x 1 1/4	82	39	82	39	97	69	0,811
47537	2 1/2 x 2 1/2 x 1	82	39	82	39	95,5	72,5	0,772
47538	2 1/2 x 2 1/2 x 3/4	82	39	82	39	98,5	75,5	0,743
47539	2 1/2 x 2 1/2 x 1/2	82	39	82	39	99	79,5	0,691
47540	2 1/2 x 2 x 2 1/2	89,5	46,5	110,5	70,5	92	49	1,557
47541	2 1/2 x 2 x 2	82	39	104	64	89	49	1,388
47542	2 1/2 x 2 x 1 1/2	82	39	104	64	102	66	1,310
47546	2 1/2 x 1 1/2 x 2 1/2	89,5	46,5	113	77	92	49	1,000
47547	2 1/2 x 1 1/4 x 2 1/2	89,5	46,5	108	80	92	49	0,944
47549	3 x 3 x 2 1/2	97	47	97	47	98	55	1,218
47550	3 x 3 x 2	89	40	89	40	96,5	56,5	1,247
47551	3 x 3 x 1 1/2	89	40	89	40	109,5	73,5	1,157
47552	3 x 3 x 1 1/4	89	40	89	40	104,5	76,5	1,057
47553	3 x 3 x 1	89	40	89	40	103	80	1,012
47554	3 x 3 x 3/4	89	40	89	40	106	83	0,973
47555	3 x 3 x 1/2	89	40	89	40	106,5	87	0,941
47558	3 x 2 1/2 x 2 1/2	97	47	113,5	70,5	98	55	1,301
47559	3 x 2 x 3	103	52,5	123,5	83,5	106	56	1,340
47560	3 x 2 x 2	89	40	110,5	70,5	96,5	56,5	1,869
47561	3 x 2 1/2 x 2	89	40	107	64	96,5	56,5	1,923
47570	4 x 4 x 3	113,5	43,5	113,5	54	118	68	3,563
47571	4 x 4 x 2 1/2	108	48	108	48	110,5	67,5	2,149
47572	4 x 4 x 2	101	40,5	101	40,5	107,5	67,5	1,927
47573	4 x 4 x 1 1/2	101	40,5	101	40,5	120,5	84,5	1,814
47574	4 x 4 x 1 1/4	101	40,5	101	40,5	115,5	87,5	1,736
47575	4 x 4 x 1	101	40,5	101	40,5	114	91	1,545
47576	4 x 4 x 3/4	101	40,5	101	40,5	117	94	1,580
47577	4 x 4 x 1/2	101	40,5	101	40,5	117,5	98	1,815



P x P x FIPS Tees

BMI#	SIZE (D1)	L1 (mm)	A1 (mm)	L2 (mm)	A2 (mm)	Kg
47594	1/2	39,5	19,0	36,5	22,5	0,105
47595	3/4	45,5	21,5	41,5	25,5	0,191

PRESS-FIT WROUGHT COPPER FITTINGS



Caps

BMI#	SIZE (D1)	L1 (mm)	A1 (mm)	Kg
47504	1/2	24,0	3,5	0,023
47505	3/4	27,0	3,0	0,036
47506	1	27,0	3,0	0,047
47507	1 1/4	32,0	3,0	0,068
47508	1 1/2	43,0	6,0	0,127
47509	2	47,0	6,0	0,185

BMI#	SIZE (D1)	L (mm)	A (mm)	Kg
47510	2 1/2	61,5	18,5	0,310
47511	3	68,5	18,5	0,442
47512	4	77,5	17,5	0,761

P x FIPS Adapters

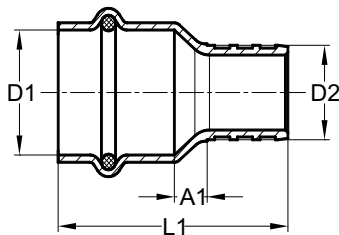
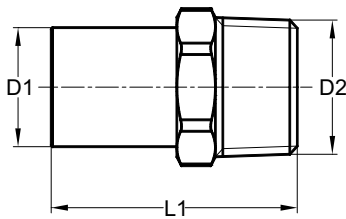
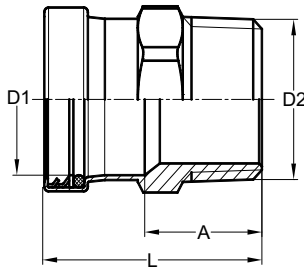
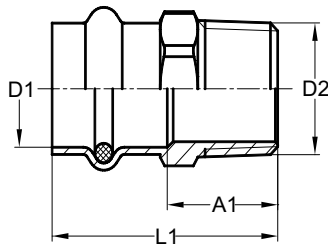
BMI#	SIZE (D1xD2)	L1 (mm)	A1 (mm)	Kg
47704	1/2	43,0	7,0	0,046
47705	3/4	46,0	5,5	0,078
47706	1	48,0	5,0	0,113
47707	1 1/4	56,0	6,0	0,157
47708	1 1/2	64,0	5,5	0,239
47709	2	72,0	5,5	0,355
47717	1/2 x 3/4	42,0	5,5	0,068
47723	3/4 x 1/2	41,0	4,5	0,075
47726	1 x 1 1/4	54,0	8,0	0,209
47727	1 x 3/4	44,0	3,5	0,102
47728	1 x 1/2	53,0	14,5	0,130
47732	1 1/4 x 1 1/2	56,0	5,5	0,281
47733	1 1/4 x 1	53,0	4,0	0,132
47736	1 1/2 x 1 1/4	63,0	6,0	0,210

BMI#	SIZE (D1xD2)	L (mm)	A (mm)	Kg
47710	2 1/2	91,0	25,0	0,567
47711	3	100,0	24,5	0,841
47712	4	111,0	23,0	1,724

FTG x FIPS Adapters

BMI#	SIZE (D1xD2)	L1 (mm)	A1 (mm)	Kg
47784	1/2	44,0	30,0	0,042
47785	3/4	49,0	33,0	0,070
47786	1	50,5	32,5	0,105
47787	1 1/4	59,0	39,0	0,147
47788	1 1/2	65,5	44,5	0,221
47789	2	78,0	53,0	0,343

PRESS-FIT WROUGHT COPPER FITTINGS



P x MIPS Adapters

BMI#	SIZE (D1xD2)	L1 (mm)	A1 (mm)	Kg
47804	1/2	43,0	22,5	0,049
47805	3/4	48,0	24,0	0,087
47806	1	49,0	25,0	0,129
47807	1 1/4	56,0	27,0	0,167
47808	1 1/2	67,0	30,0	0,284
47809	2	71,0	30,0	0,406
47821	1 x 1/2	54,0	30,0	0,141
47822	1/2 x 3/4	45,0	24,5	0,087
47823	3/4 x 1/2	48,0	24,0	0,076
47827	3/4 x 1	52,0	28,0	0,137
47831	1 x 1 1/4	53,0	29,0	0,205
47833	1 x 3/4	49,0	25,0	0,110
47835	1 1/4 x 1 1/2	58,0	29,0	0,269
47836	1 1/4 x 1	56,0	27,0	0,157
47839	1 1/2 x 1 1/4	68,5	31,5	0,268
47842	1 1/2 x 2	67,0	30,0	0,456

BMI#	SIZE (D1xD2)	L (mm)	A (mm)	Kg
47810	2 1/2	96,0	53,0	0,735
47811	3	105,0	55,0	1,013
47812	4	119,0	59,0	1,739

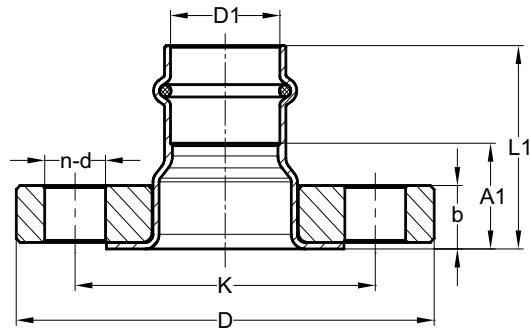
FTG x MIPS Adapters

BMI#	SIZE (D1xD2)	L1 (mm)	Kg
47884	1/2	45,0	0,044
47885	3/4	50,0	0,078
47886	1	54,0	0,123
47887	1 1/4	63,0	0,184
47888	1 1/2	73,0	0,269
47889	2	81,0	0,402

P x PEX Adapters

BMI#	SIZE (D1xD2)	L1 (mm)	A1 (mm)	Kg
47944	1/2	44,0	7,5	0,062
47945	3/4	49,0	9,0	0,085
47946	1	54,0	10,0	0,135

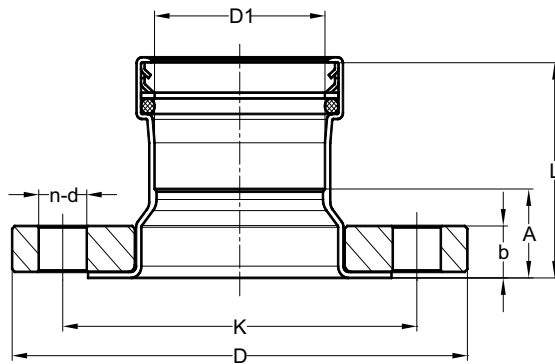
PRESS-FIT WROUGHT COPPER FITTINGS



* This product is partially made of
peint coated forge steel alloy

Companion Flanges

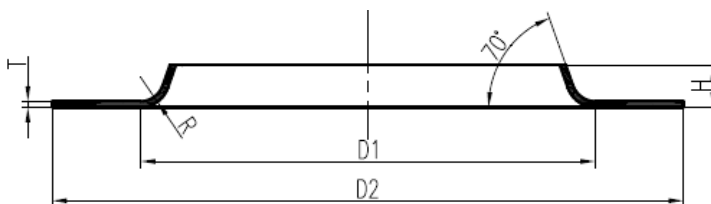
BMI#	SIZE (D1xD)	L1 (mm)	A1 (mm)	b (mm)	D (mm)	K (mm)	n	d (mm)	Kg
47606	1 x 4 1/4	58	34	16	110	79	4	16	0,262
47607	1 1/4 x 4 5/8	58	29	16	115	89	4	16	0,299
47608	1 1/2 x 5	66	29	16	125	98	4	16	0,361
47609	2 x 6	70	29	16	150	121	4	19	0,513



* This product is partially made of
peint coated forge steel alloy

Companion Flanges

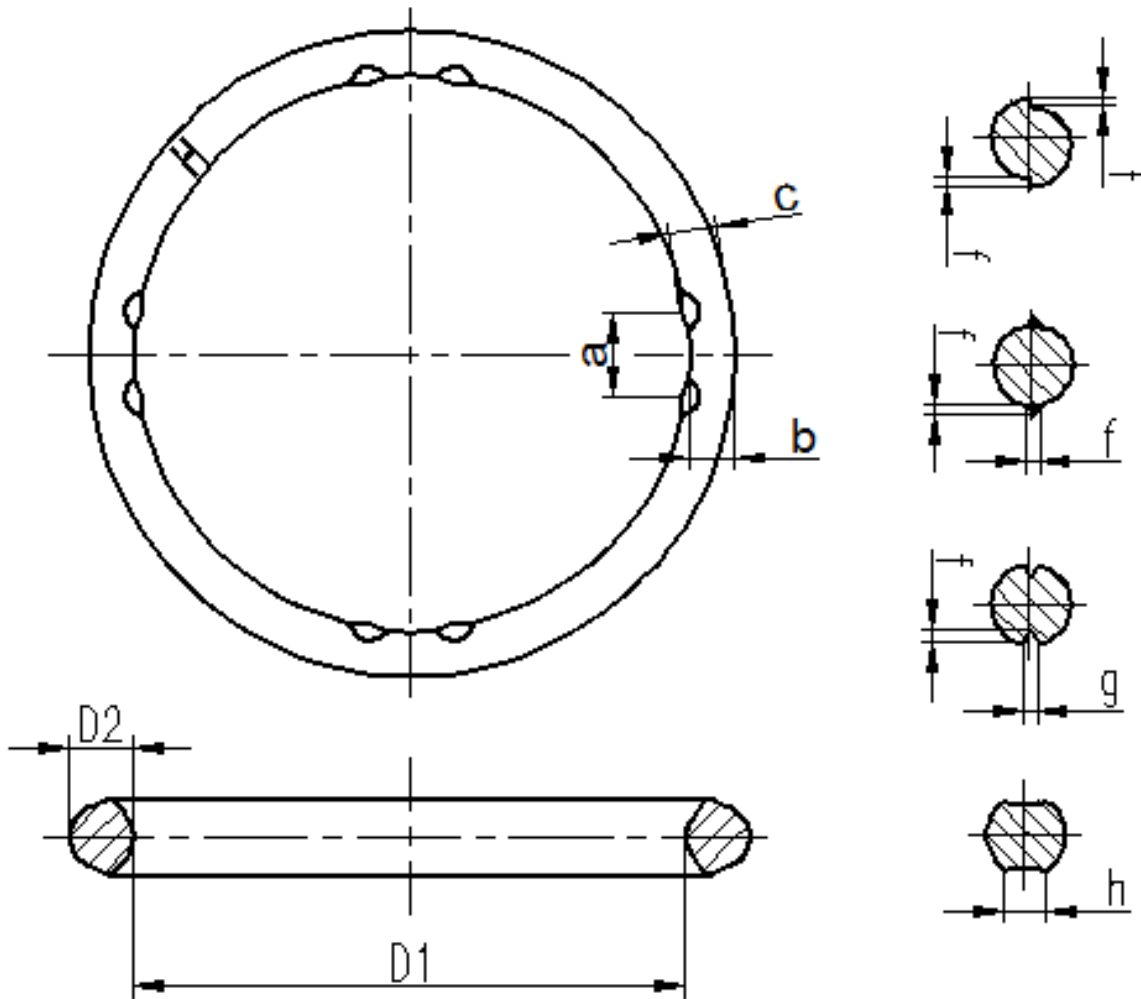
BMI#	SIZE (D1xD)	L (mm)	A (mm)	b (mm)	D (mm)	K (mm)	n	d (mm)	Kg
47610	2 1/2 x 7	72	28	17,5	180	140	8	19	0,585
47611	3 x 7 1/2	85	34	20,5	190	152	8	19	0,753
47612	4 x 9	95	34	22,5	230	191	8	19	1,045



Insulators for Companion Flanges

BMI#	SIZE	D1 (mm)	D2 (mm)	H (mm)	T (mm)	R (mm)
*47606	1 x 4 1/4	44,0	63	6	0,9	5
*47607	1 1/4 x 4 5/8	50,5	73	6	0,9	5
*47608	1 1/2 x 5	57,5	82	7	0,9	5
*47609	2 x 6	69,5	102	7	0,9	5
*47610	2 1/2 x 7	85,0	121	8	0,9	5
*47611	3 x 7 1/2	99,5	133	9	0,9	6
*47612	4 x 9	124,5	172	10	0,9	6

PRESS-FIT WROUGHT COPPER FITTINGS



EPDM Rubber O-Rings

BMI#	SIZE (D1)	SIZE (D2)	a (mm)	b (mm)	c (mm)	f (mm)	g (mm)	h (mm)
47974	16.15+0.30	2.85+0.15	4,5	2.65+0.10	3.00+0.15	0,05	0,02	0,15
47975	22.45+0.30	3.45+0.15	5,5	3.25+0.10	3.65+0.15	0,05	0,02	0,15
47976	28.90+0.40	3.35+0.15	5,8	3.10+0.10	3.50+0.15	0,10	0,02	0,20
47977	35.40+0.40	3.30+0.15	6,5	3.05+0.10	3.50+0.15	0,10	0,02	0,25
47978	42.40+0.40	4.30+0.15	7,5	4.05+0.10	4.65+0.20	0,10	0,02	0,25
47979	54.50+0.40	4.25+0.15	8,0	4.00+0.10	4.45+0.20	0,10	0,02	0,25

BMI#	SIZE (D1)	SIZE (D2)	f (mm)	g (mm)	h (mm)
47980	67.60+0.70	4.70+0.25	0,10	0,03	0,30
47981	80.30+0.80	4.95+0.25	0,10	0,03	0,30
47982	105.80+0.80	4.55+0.25	0,10	0,03	0,30

PRESS-FIT WROUGHT COPPER FITTINGS



Compliance references:

Materials: ASTM B88 alloy C12200 (99.9% cu)
Threads: ASME B1.20.1
Properties: IAPMO PS 117, ASME B16.51

Product certifications:

IAPMO: IAPMO PS 117, Uniform Plumbing Code (UPC)
ICC-ES: ASME B16.51
NSF: NSF/ANSI 61, NSF/ANSI 372 (lead free)
BMEC: Ontario 22-01-397

Factory certifications:

CQC: ISO9001, ISO14001

Application References:

All tubing used must be as per ASME/ASTM B88 standard K, L and M hard copper tubing from 1/2" to 4" and soft copper tubing in 1/2" to 1 1/4" diameters.

Compatible with all major brands pressing tools.

Can be used for:

- Potable Water
- Hydronic Heating (w/Glycol)
- Chilled Water
- Compressed Air (200 psi max.)
- Non-Medical Gases (140 psi maximum)
- Low Pressure Steam (15 psi maximum)

Operating Information:

Working pressure: 200 psi Max.
Max test pressure: 600 psi Max.
Low pressure steam: 15 psi Max.
Working temperature: 0~250 °F (-18~121 °C)
Vacuum: 29.2" Mercury @ 68 °F (20 °C)

Warranty:

BMI Press products carry a 50-year limited warranty against defects in material and workmanship.



**360°
Leak
Detection
Design**

Leak Detection Design

BMI Press fittings are made with a Leak Detection Design, providing fast and easy identification of unpressed connections during the pressure testing process in any installation angle possible.

The design feature provides a path for liquids and/or gases from inside the system past the sealing element of an unpressed connection.

When pressed according to instructions, the Leak Detection Design feature is neutralized, creating a leak proof, permanent connection.

Unpressed connections are located by pressurizing the system with air or water. When testing with water the suggested pressure of 15 to 85 psi maximum. (Test with air can be dangerous, manufacturer recommend testing compressed air at 1/2 to 45 psi maximum).

Following a successful test, the system may be pressure tested up to 600 psi maximum for water and 200 psi maximum for air, depending on local code requirements.