

# South Kilworth News

November 2025



Photo Robert Snell



# South Kilworth Directory

Name	Contact details	Description
<b>Allotment Committee</b>	Les Lucas 07712296376	For the green-fingered aspirants
<b>Bowls Club</b>	Gerry Byrne 01858 575080 gerrypatrickbyrne@gmail.com keithrickhuss@gmail.com	New or potential members are welcome to come along on Wednesdays, at 3 pm, for a roll-up, information or advice.
<b>Community Café</b>	Tina Morley 07786496041	Community café is usually held 2 <sup>nd</sup> Tuesday of the month in the Village Hall, 11am-1pm. See posters around village for details.
<b>First Saturday Weavers at SK Village Hall</b>	Helen Brotherton 01455554647 helen.brotherton@icloud.com	An informal group of hand weavers who meet on the first Saturday of the month
<b>FOSKS PTA</b>	FOSKS@ski.learnat.uk	Friends of South Kilworth School, Parent Teacher Association.
<b>Kid's football</b>	Brian Robbins 07795105591	On the village hall playing fields
<b>Kilworth Help Group WhatsApp</b>	To be added, WhatsApp administrators Kate 07990504734 or Suzanne 07889449180	Set up to help people during Covid, but now used for general enquiries (not advertising). Covers North and South Kilworth.
<b>Kilworth Village's Facebook pages</b>	1. The Kilworth villages and 2. North and South Kilworth village.	To join the groups, you need to have a Facebook account and search for the groups to request to join.
<b>KOIL</b>	Mark and Sarah: admin@koil-group.com	Group ordering of Oil
<b>Korks (ladies only)</b>	Contact Claire Hubbard on 07590254043 to be added to the Korks WhatsApp group.	A ladies' social group from the Village meets monthly. Add your name to the mailing list.
<b>Luncheon Club</b>	Rita Hallam 575449	
<b>N. Kilworth Sparrows Women's Netball team</b>	Contact: nksparrows@gmail.com, or Emily Conlon 07449968444	Combining North and South Kilworth residents. facebook.com/NKSparrows
<b>Parish Council</b>	Parish Clerk: Karen Brown parishclerk@southkilworth.co.uk	Meet on the second Tuesday of each month at 7:15 pm. Chair: Phil Alcock 575978 philalcock@aol.com
<b>SK Security WhatsApp group</b>	Pete Moore 07775795761	Alerts regarding security issues in the village are posted with a link to the Community Police. Contact Pete to be added.
<b>Skittles Teams</b>	Ray Dorman 07780846002 Tracey 07733235306 (Ladies team)	Games take place at the pub
<b>South Kilworth Art Group</b>	Maggy Roberts 07912031816 and 01858682173 magsroberts@yahoo.co.uk	Thursdays, 9.30 am to 12.00 Midday, Village Hall
<b>South Kilworth Neighbourhood Plan</b>	Contact the Parish Council	<a href="http://www.harborough.gov.uk/directory_record/2256/south_kilworth_neighbourhood_plan">www.harborough.gov.uk/directory_record/2256/south_kilworth_neighbourhood_plan</a>
<b>South Kilworth News</b>	sknews@southkilworth.co.uk	Community news for the village – contact us with ideas, photos & news.
<b>South Kilworth Village Website</b>	Kevin Coyne: admin@southkilworth.co.uk	southkilworth.co.uk.
<b>St Nicholas Church</b>	Sharon March (Minister): 07889 88038 <a href="https://www.avonswift.co.uk/">https://www.avonswift.co.uk/</a> <a href="https://www.facebook.com/avonswiftbenefice">https://www.facebook.com/avonswiftbenefice</a>	Administrator: Karen Morgan: 01858 882032 PCC Secretary: Joanna.wilson17@btinternet.com & 01455 558 372 Church Warden: James Perowne 07810 886030
<b>Table Tennis</b>	Bob Morley 575832 bobjmorley1953@gmail.com	Thursday at 7 pm in the Village Hall
<b>Travelling lunch club</b>	Alison Anderton: 0870 240 6993	Lutterworth Age Concern currently has two travelling lunch clubs, travelling to different pubs each month.
<b>Village Email circulation list</b>	southkilworthlist@gmail.com	Send an email to become a member of this list. It is a postbox that doesn't reply! If you send something for circulation, please put your contact details in the email. Email addresses are never shared and cannot be used for commercial purposes.
<b>Village Hall Committee</b>	Secretary:Tina.morley@me.com 07786496041	Bookings: colinjerrick@btinternet.com 07711054622
<b>Women's Institute</b>	Elaine: ederrick@btinternet.com	3 <sup>rd</sup> Thursday of the month at Belgrave village hall, N. Kilworth LE17 6EZ at 7.30 p.m. Visitors and new members welcome.
<b>Yoga</b>	Jessie McQuillan: 07860937892	Tuesdays, ladies 6 pm-7:30 pm in the Village Hall. All abilities and those new to yoga are welcome.
<b>Youth Club - SKY (8-16yrs)</b>	Kay Hillier, Youth Projects and Mentoring Project Coordinator 07704614154 kay.hillier@hcyc.org.uk	SKY Youth Club, all ages, meets in the village hall every Wednesday, 6:45-7:45pm. Ages 11-16 only, 7:45 – 8:45pm Admission is free.

## From the Editorial Team

**Season's Greetings and Happy Christmas! The next edition will be in January 2026, and the deadline for the submission of news and articles is 10 December 2025. The SK News is published every other month. The electronic version can be found on the South Kilworth website. Please send news, photos, and articles to [sknews@southkilworth.co.uk](mailto:sknews@southkilworth.co.uk). News that does not coincide with the printed SK News may be uploaded to the South Kilworth website. Links to our advertisers can also be found on the South Kilworth website.**

## South Kilworth Snippets

### South Kilworth's next **CAFÉ**

**November 11<sup>TH</sup>**

**11h00 -13h00, Village Hall**



Everyone very welcome!



### Church services at St. Nicholas' South Kilworth

*All very welcome!*

Sunday 9th November 10:45am

**Remembrance Sunday Service**

Sunday 23<sup>rd</sup> November 8:30am

**Holy Communion**

Christmas Eve, 24<sup>th</sup> December 5pm

**Carol Service. Come and Sing Carols! Children, bring toys and dress up if you wish! All your favourite carols!**

Sunday 28<sup>th</sup> December 8:30am

**Short service of Holy Communion**



### SOUTH KILWORTH VILLAGE HALL

## QUIZ night

**Friday 21<sup>st</sup> November 2025**

**7:30pm**

Teams of up to 6 - £12 per person

Ploughman's supper included - Bar open

Prizes 1<sup>st</sup> and 2<sup>nd</sup> team - Heads n' Tails Jackpot

Tickets on sale until 14<sup>th</sup> November from  
Julie: 07368 386709 or Tina: 07786 496041

Organised by the Village Hall Committee in aid of hall funds



### Musical Concert

A programme of music featuring young performers from the National Children's Choir of Great Britain and the CBSO Youth Chorus

Saturday 8<sup>th</sup> November Fundraising Concert

St Nicholas's Church, 4pm.

*Come along for a musical treat!*

Tickets £7 on the door

Raffle and refreshments



## Christmas

## Fayre and Café

**December 9**

**11 - 2 in the Village Hall**



**CHURCH RAFFLE**

**SCHOOL CHOIR**

*Special appearances*

*Father Christmas*

*and our own house Elf*

# The Life and Times of Susan Darby. Still going Strong!



As newcomers to the Village, we first met long-time resident Susan at a village event in the hall several years ago. We were taken by her deportment, erudite observations, and lovely elocution. During that conversation and recognising our accents, Susan happily pointed out that she had lived in South Africa. So, we had a connection. And Rob, who had formerly been a Legal Counsel to an Insurance Company in South Africa, was even more impressed: Susan had been a Lloyd's of London "Name". As always, we are grateful that Susan was happy to share some more of her history with us.

Susan Darby (née Simonds) was born in London in 1933, the daughter of Colonel Robert William Barrow Simonds (CBE), a distinguished officer and Commanding Officer

in the Royal Marines, and Letitia Bosenquet, née Melsome. Her early years were deeply influenced by her father's postings abroad. She accompanied her parents, together with her nanny, Dorothy Healey, whom she adored, to Bermuda in 1938/9, just before the outbreak of World War II.



Susan's parents

During the war, Susan was sent to Manor House School in Little Bookham, Surrey, where she boarded for four years. She vividly recalls the 'terrifying' sound of "doodlebugs" (German V-1 flying bombs) overhead and being instructed to shelter under desks. Susan clarified that she was too young to be terrified! The name doodlebug came from its buzzing pulsejet engine noise, which was compared to the sound of a motorbike or a "doodlebug" insect. Her younger sister Caroline was born in 1941, the same year Susan began boarding school. Later, she attended Tudor Hall in Banbury, Oxfordshire.



Susan, 1948 with her dog, Benjy

In 1948, Susan's family relocated to Simon's Town, Cape Town, South Africa, where her father had been posted. She enrolled at Herschel Girls' School, named after the renowned scientist Sir John Herschel, who had once lived on the adjoining land. The move was a culture shock for Susan, who had previously lived with her grandfather and maiden great aunts in Winchester. Raised in traditional English country fashion, she found the transition to South African life challenging—especially when her pale blue organza dress, lovingly made by her mother, stood out among her peers' slinky, modern outfits!



Susan, in her Herschel uniform

After matriculating, Susan began a shorthand typing course in Cape Town, but the family soon returned to London, where she also continued with a shorthand typing course. Now 18, Susan resisted her father's hopes that she would marry a Royal Marine.

Instead, her perceptive grandmother funded a skiing trip with the Ski Club of Great Britain. It was on this trip that Susan met John Darby—definitely not a Royal Marine, but a gunner doing his national service. A year later, on their next ski holiday, John proposed with the words: "I think we should get married, don't you?" They wed in 1953 at St Bartholomew's Church, Hyde Abbey, near Winchester and honeymooned in France and Monaco.



John and Susan's wedding and on honeymoon



Debutant's Ball, South Africa

John's father had sadly died of tuberculosis after serving in WWI, and his mother later remarried. John had an identical twin and a sister. John worked for Phipps Brewery in Northampton and then Atkinson Brewery, both owned by a relative, while Susan started as a waitress at the Arden Hotel in Stratford-upon-Avon. She was soon promoted to a shorthand typist role when they realised she was



qualified! Their first home—a thatched cottage in Moulton, Northampton—cost £900 and came with no sewage system and had a well in the garden!



John's dream was always to farm. In 1959, following the death of his stepfather, John's mother helped fund the purchase of land in South Kilworth. Their farm focused on grazing. John's Uncle, who also farmed, gave them some cattle which were not suitable for his dairy. They settled at Highfield Farm, the "big house." Susan now resides in the two tied cottages originally built for farm workers. Back then, John's mother lived in the Observatory. Their first Christmas at Highfield was memorable for all the wrong reasons. The boiler front collapsed on Christmas Day. Susan's parents, who had been visiting, promptly returned home!

Farming proved fruitful in the 1960s, and the couple expanded their holdings around the reservoir and in nearby Theddingworth. In the 1970s, Susan and John became "Names" at Lloyd's of London. When Rob had studied law, insurance law had been one of his subjects. The history of insurance law includes the fact that Lloyd's of London began in the late 17th century in Edward

Lloyd's coffeehouse, where merchants and shipowners gathered to insure cargo and vessels.

Traditionally, Names were wealthy individuals who provided capital to underwrite insurance policies. In return, they received a share of the profits—but also accepted unlimited liability, meaning they were personally responsible for any losses.

By the 1980s, there were over 30,000 Names. Many were professionals and landowners drawn by the prestige and potential profits. However, the system faced turmoil in the late 1980s and early 1990s due to massive claims from asbestos, pollution, and natural disasters. The losses led to lawsuits and reforms. Lloyds was restructured in the mid-1990s, introducing corporate capital and limiting the liability exposure of new participants—individuals who provide capital for insurance underwriting in exchange for a share of the profits.

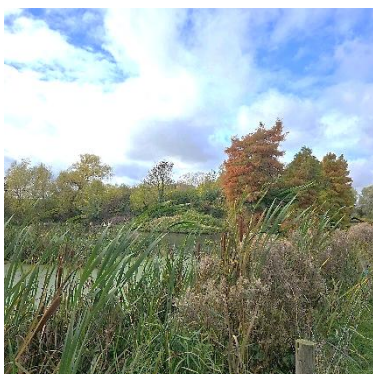
Susan told us that though not wealthy, they were landowners, and a Lloyd's contact who knew them socially, encouraged them to join. Their first year yielded a profit of £11,000 (around £170,000 today), which Susan cheekily notes paid for daughter Louise's wedding. After 12 years, they exited the scheme, having faced a hefty £60,000 insurance loss in one year.

Susan and John have two children: Keith, who continues the farming tradition and now lives at Highfield Farm, and Louise, who co-owns an art gallery. Keith has two stepdaughters and two sons; Louise has a daughter, a son and two grandchildren—Susan's great-grandchildren.

Now 92, Susan remains a vibrant part of village life. Over the years, she's contributed to the Queen Mother's Clothing Guild, South Kilworth's Luncheon Club, and Riding for the Disabled. Her enduring passion has been singing—formerly with the Lutterworth and District Choral Society as an alto, and currently with the 'Singing for Well-being' Choir at All Saints Church in Clipson every month on a Saturday. She also practices yoga and volunteers at the monthly South Kilworth Community Café.

Susan's story is one of resilience, elegance, and quiet determination—a life well lived, and still going strong!

**Rob and Toni Snell**







Lambert & Wright are an award winning Property Renovation Team covering the Midlands. With over 30 years of experience we handle everything from plumbing and electrics to period restoration.

For a free consultation please call or email:-  
07866 741261 (Jason)  
info@lambertandwright.co.uk

*Bliss & Beauty*  
The Complete Skincare Specialists



Bliss & Beauty is a skin and beauty salon nestled in a barn in the South Leicestershire countryside, with free parking right outside the door. While we specialise in skin transformations, we also offer all your usual beauty treatments from Aromatherapy Massage to Waxing. Head to our website where you can read over 1000 5\* reviews and see this month's special offers.

**BOOK NOW** to see our brand new rooms at Kilworth House Hotel! We are thrilled to be partnering with this incredible well-renowned venue for all of your beauty needs.



*Shop for products, gift vouchers & book online at*  
**www.blissandbeauty.co.uk**

01858 571 244 | 07773 234 355 | info@blissandbeauty.co.uk | www.blissandbeauty.co.uk  
Dog Lane, South Kilworth, LE17 6DY | Kilworth House Hotel, Lutterworth Road, North Kilworth, LE17 6JE



**THANK YOU!**

## **Macmillan Cancer Support Coffee Morning in the Village Hall**

This year, on Friday 26 September, we raised £1504,25.

South Kilworth Village has been supporting the Macmillan Cancer Support coffee morning since 2005 and has raised a total of £28,000! This was recognised by Sam, a representative from the charity who attended our coffee morning.

Many thanks to everyone who supported us again this year, and it was great to see some new faces.

Thanks to all the cake bakers, helpers and stall holders for all their hard work.

Thank you also to the Village Hall Committee for allowing us to use the hall; it makes a big difference to our fundraising, and we are very grateful for their generosity.

**Liz Sanders and Beth Rogers**



[www.nenettechocolates.co.uk](http://www.nenettechocolates.co.uk)

m: 07811 170633

e: [info@nenettechocolates.co.uk](mailto:info@nenettechocolates.co.uk)



I hesitate to mention the 'Christmas' word...but you know, it's just around the corner!

I can help you with your special chocolatey gifts this year from hampers, hamper and stocking-fillers to statement piece chocolates too. Boxed truffles with your favourite flavours, 'Smashables' bars, chocolate-dipped honeycomb and inevitably, Dinosaur Eggs.

For everyone in the village, I am happy to deliver your chocolates to you free of charge because I enjoy coming to see you 😊. Or I can send your gift direct on your behalf with your own special message.



*Nenette*  
HAND CRAFTED CHOCOLATE



- Business stationery
  - Wedding stationery
  - Menus
  - Promotional items
  - Large Format
  - Labels
  - Invites
  - Design Services
- and much more*

Offering a hassle-free, cost-effective, single source print solution with free delivery to local businesses

We go over and above usual customer service

We come to you to discuss your personal print requirements

10%  
off your  
first  
order

**01455 207 508**

[lutterworth@minutemanpress.com](mailto:lutterworth@minutemanpress.com)

[www.lutterworth.minutemanpress.co.uk](http://www.lutterworth.minutemanpress.co.uk)

14c High Street | Lutterworth | Leicestershire | LE17 4AD



# Maintenance of the War Memorial Clock



The War Memorial Clock was installed in 1921 on the St Nicholas' spire to remember those who fell in World War 1. Each November at 11 am on the 11<sup>th</sup>, the names of those who fell are read out in remembrance.

Recently, an abseil club was hired to remove a twig from the east face, which stops the hand at the 6 o'clock point. As the mechanism is 104 years old, it now requires substantial repairs. John Keele winds the clock each week, and it is hoped that, going forward, we could install a mechanical method to auto-wind. A Derby firm has indicated possible costs of repairs and clock renewals as approximately £20,000.



If anyone would like to consider an annual standing order or make a donation, large or small, to suit personal ability, it would be gratefully accepted. The Parish Council will investigate the possibility of a grant to help cover costs, too.

**For donations, please credit:** Lloyds Bank plc. Name on Account: South Kilworth Parish Council. Sort Code: 309089. Account No: 53949960. Ref: War Memorial Fund. Please ensure that the above reference is quoted on any payments to ensure your kind donation is allocated correctly.

On behalf of the South Kilworth parish council, Gerry Byrne

## ECLECTIC STOVES

Multi-fuel Stoves Installation  
Service & Alterations • Chimney Liners  
Chimney Systems Accessories



Outdoor Ovens & Accessories  
Outdoor Heaters & BBQ's

Tel: 077368 14399 - 07976 177987

Email: [info@eclecticstoves.co.uk](mailto:info@eclecticstoves.co.uk)

Web: [www.eclecticstoves.co.uk](http://www.eclecticstoves.co.uk)



Eclectic, Lodge Farm

Walton Lane, Husbands Bosworth LE17 6NN

Open 9-5 Sat and 9.30-3 Thurs

## STOVES



Multi-fuel Stoves • Installation,  
Service & Alterations • Chimney Liners  
Chimney Systems • Accessories

Tel: 077368 14399 - 07976 177987

Email: [info@eclecticstoves.co.uk](mailto:info@eclecticstoves.co.uk)

Web: [www.eclecticstoves.co.uk](http://www.eclecticstoves.co.uk)

Eclectic, Lodge Farm

Walton Lane, Husbands Bosworth LE17 6NN

Open 9-5 Sat and 9.30-3 Thurs





## LANDSCAPE & PROPERTY SERVICES


**20 years of approved, professional,  
highly recommended services.**


**We offer a wide range of landscaping,  
construction and property solutions:**

- Driveways and patios
- Resin and concrete Installations
- Carpentry
- Fencing
- Decking
- Construction
- Ground works
- Drainage and guttering
- Ponds and water features
- Tree and hedge pruning
- Garden maintenance
- House renovations and repairs

**Please contact us for a free no  
obligation quote:**

 **07525 064220**

 **[www.twlandpservices.com](http://www.twlandpservices.com)**

 **[twlandpservices@outlook.com](mailto:twlandpservices@outlook.com)**

**Find us on:**

**Checkatrade.com**





# KORKS PLAN 2025

Date	Event
17 Nov	Christmas Wreath Making – Vicky, Caroline
10 Dec	Christmas get-together - Eli

Korks is a ladies' social group from the Village, and all ladies are welcome to join. You need to join the KORKS WhatsApp group to find out about events. You will be notified at least a month before the event of all the details. You can then sign up for the event if you are

interested. If you are not on the KORKS list, please WhatsApp Claire on 07590254043 to be added.

## ALL Wrapped Up! – September



We wrap gifts all the time, and as a long-time admirer of those who wrap with flair and pizzazz, I decided it was time to up my game! Zoe had organised the event and, with the patience of Job, provided step-by-step instructions, demonstrating elegant and impressive wrapping options. Armed with my wrapping instructions, I have subsequently managed to put my newfound skill to use! A fun evening!  
Thanks, Zoe!

## Halloween Fright Night! - October

Claire D. organised a trip to the Cotesbach Educational Trust, where Dr Leonard Holden gave an entertaining and informative talk on the Witchcraft Trials in Leicestershire in the 17<sup>th</sup> Century. In these cases, 9 women from Husband's Bosworth and 6 from Bottesford met their unfortunate demise. With the real horrors having taken place on our doorstep, it brought to life the dusty pages of our history books! Thanks, Claire, for organising the fascinating evening.



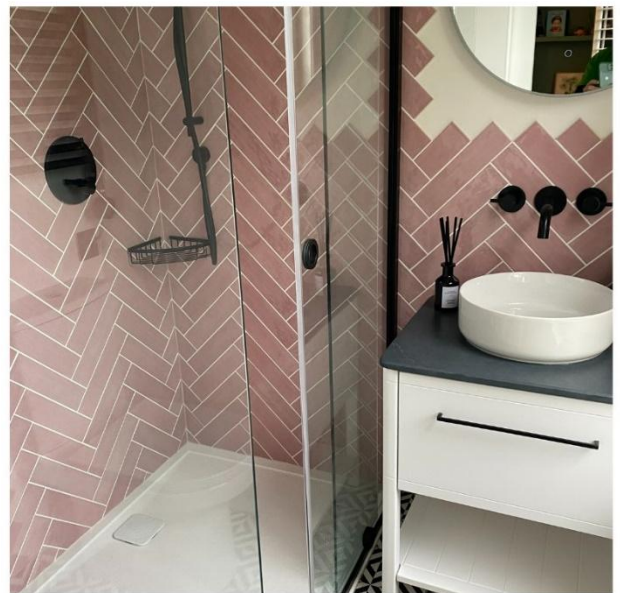
## Sing Carols Together

Christmas Eve 5pm  
at St.Nicholas'  
SouthKilworth

Children bring your toys, adults  
come and ring in the festive  
season in this historic building at  
the centre of our beautiful village







**Full bathroom design and installations.**

**Full kitchen design and installation.**

**All types of tiling.**

For a free quotation please call or email Jason:-

**07866 741261**

**jasonfandw@hotmail.com**



I need your help, please. My name is Claudia O'Neill. I'm seventeen years old and have lived in South Kilworth since 2021. I have an opportunity to volunteer at a conservation project Project Trust in the Philippines in September 2026 for a year. Whilst there I would help with community projects in conservation and raise awareness with the local communities on geographical issues. I will also share my news with you.



I need to raise the funds myself to do this, and as part of my campaign, I have taken out this advert.

I would be so grateful if you would assist me by using the QR code to get to my fundraising page.  
xxx Claudia

## **A.T. BROWN & SON**

### **CLEANCARE SERVICES**



**PROFESSIONAL CARPET & UPHOLSTERY CLEANERS**



Telephone: 0116 279 6969

Mobile: 07442 531 284

matt@atbrownandson.co.uk [www.atbrownandson.co.uk](http://www.atbrownandson.co.uk)



# Slimming Down, Changing Up: How Weight Loss Injections Are Reshaping the UK's Battle with the Scales

Not so long ago, if you wanted to lose weight, the standard options were familiar: join Slimming World or Weight Watchers, cut back on calories, increase your step count, and maybe join a gym. These traditional approaches — based on behaviour change, social support, and long-term commitment — have helped many people lose weight over the years. But now, a new wave of medications is quietly disrupting the industry — and for some, changing everything.



Drugs like Wegovy, Ozempic, and most recently Mounjaro have been hailed as game changers in the treatment of obesity. Originally developed to treat type 2 diabetes, these medications help regulate blood sugar and, crucially, suppress appetite. For people who have struggled with weight for years, often despite their best efforts, these new tools offer something radically different — a biological intervention in a battle that has traditionally been psychological and behavioural.



## So, How Do These Injections Work?

The science is fascinating. Medications like Mounjaro mimic hormones that regulate appetite and insulin. They make you feel full more quickly, reduce cravings, and slow how fast your stomach empties. The result? People eat less without constantly battling hunger.

Unlike fad diets or willpower-driven regimes, these drugs change how your body signals hunger. This biological shift is what makes them so different — and for many, so effective.

## The Disruption to Traditional Weight Loss Support

Organisations like Slimming World and Weight Watchers have built decades of success on community, peer support, and gradual habit change. But if appetite and hunger — two major drivers of overeating — can be switched off chemically, where does that leave group-based weight loss models?

Already, reports suggest that slimming clubs are seeing declines in attendance and retention. Anecdotally, people are leaving groups after starting on medication because, simply put, they're not hungry anymore. The need to learn portion control or track points becomes less relevant when your body naturally wants less food.

That's not to say there's no role for behavioural support. Long-term success still depends on lifestyle change, emotional health, and managing the reasons we eat beyond hunger. But the foundations are shifting. The long-term viability of these club businesses must now be in question. If the world can lose weight by taking a drug, why put yourself through a weekly weigh-in and the humiliation of a gain due to lack of willpower?

And then there's the cost. A typical Slimming World membership might set you back £5 to £6 a week — roughly £20 to £25 a month. In contrast, the private cost of Mounjaro or similar injections can range from **£150 to £300 per month**, depending on dosage and provider. That's a significant investment, and it's not currently affordable or accessible to everyone.



NHS access remains limited. These medications are typically only prescribed under specialist supervision, and only for people who meet strict criteria — such as those with obesity-related conditions like type 2 diabetes. A friend of mine, for instance, was prescribed Mounjaro due to obesity-related diabetes. Today, after sustained use of the medication, he is no longer obese and no longer diabetic!

## My Experience with Mounjaro

Speaking personally, I've been on Mounjaro for several months now. I didn't make the decision lightly — and I wouldn't describe it as a magic fix. But the difference is real.

What surprised me most was the silence. The constant background noise of thinking about food — what to eat, when to eat, what not to eat — just faded. That mental space alone has been transformative. In my case, 3 stones lost. (Alternatively, that's 42 pounds or 19 kilograms! - Eds)



The physical effects followed: Smaller portions, less snacking, more control. Not because I was trying harder, but because I genuinely wasn't hungry. It's not perfect — there are side effects, and it still requires intention and awareness. But after years of effort, this felt like the missing piece of the puzzle.

### What the Future Might Look Like

Weight loss injections are not a fad — they're part of a larger shift in how we understand and treat obesity. As these drugs become more available, we're likely to see:

- **A rethink in public health messaging:** Moving away from blaming individuals and toward recognising obesity as a complex, chronic condition with biological roots.
- **Changes in the diet industry:** Traditional slimming organisations may need to adapt — offering hybrid models or medical support.
- **New challenges in access and affordability:** These drugs aren't cheap, and NHS access is still limited to certain groups.
- **More open conversation:** As stigma around medical treatment for weight reduces, people may feel more empowered to seek help.



### Final Thoughts

For decades, we've treated weight loss as a matter of willpower. But science is telling us a different story — and for many people, medications like Mounjaro are providing real hope.

This isn't the end of group support or healthy habits. But it might be the end of guilt, blame, and the endless cycle of trying harder. In its place, a new chapter: one based on compassion, evidence, and tools that actually work.

If you've tried everything, and nothing seems to stick — it might be time to talk to your GP. The future of weight loss may not look like another diet. It might just look like a small injection — and a big change.

**Pete Moore**



## The Hollies Bed & Breakfast South Kilworth

Hosts, Tim & Vivi Mills would love to welcome visiting family and friends of South Kilworth

residents to his lovely 200-year-old upmarket bed and breakfast guest house and venue.



Situated next to the pub, Tim has 6 beautifully appointed smoke-free guestrooms with all the expected amenities, including a barbecue and a terrace area. He offers a Full English/Irish breakfast daily.



For 'Home Cooked at the Hollies', try the dishes from our Thai menu. We make Tom Kha Gai, Thai Green Curry, Pad Ka Pao and Massaman Curry to name a few. We also do traditional pub classics: Burgers, Pies, Bangers and Mash, Chili Con Carne, Spaghetti Bolognese & Beef Bourguignon. We provide vegan, vegetarian and gluten free options. Please give us a call — we do need some notice (for large orders, the day before please) as we only use authentic ingredients and freshly prepare our meals.

There is no excuse for not having family and friends over for a visit with this home-from-home location on our doorstep. Please call Tim on 07811 652267 or email: Mills.Tim3@icloud.com to check on availability or order food.



# MINUTES OF A PARISH COUNCIL MEETING FOR SOUTH KILWORTH

Held on Tuesday, 23rd Sept 2025, 7.15p.m.

Minutes Ref: 856/0925

## 1.0 Confirm Members Present

Cllr P Alcock -Chair (PA left meeting at 8.15 pm)

Cllr G Byrne (GB)

Cllr K Coyne – Vice Chair (KC took over Chair from 8.15 pm)

Cllr T Wood (TW)

Parish Clerk – Mrs K Brown (KB)

## 2.0 To Receive Any Apologies Cllr TJ Wood (TJW)– Approved and Accepted

## 3.0 Disclosure of any Member's Interests GB declared an interest in planning item 25/00803/FUL, Woodstock, North Road and confirmed non-participation in this item.

## 4.0 To Confirm Other Attendees None

## 5.0 To Confirm Minutes of Previous Meeting of Council, held on 12<sup>TH</sup>Aug'25

These minutes were confirmed to be a true record of matters discussed, and decisions reached by the Parish Council, and duly signed.

## 6.0 Public Participation

**6.1** The PC acknowledged the parishioner's email dated 8<sup>th</sup> Sept, regarding LCC's planned road re-surfacing due to be started in Feb'26. Resolved.

**6.2** PA summarised the email correspondence between himself and a parishioner, regarding two cameras having been installed recently on village lampposts and managed by Northants Police. The cameras had been installed as part of a criminal investigation and have now been removed. Resolved.

## 7.0 Planning Matters

### 7.1 New Application/s:

**25/00550/OUT**, Land at Lambcote Hill Farm, Swinford Road, erection and operation of an energy storage system: PC agreed to Object to this development after hearing residents' concerns that a high % of this huge development will be visible from many properties in the village and this is borne out by closer examination of the Theoretical Visibility Plan (Figure 2.2) in the Planning Application documents. The developers have not provided viewpoints nor detailed mitigation from within the village, preferring instead views from isolated points outside South Kilworth. The PC is also concerned that this development is not connected to, nor will it store energy from Swinford Windfarm, yet it seeks to cloak its appearance in the context of a windfarm that now has limited years of life, compared with the timeframe for the BESS.

**25/00803/FUL**, Woodstock, North Road, installation of a dropped kerb: PC agreed no comment (GB did not participate in this discussion).

### 7.2 Planning Decisions / Updates Reported:

25/00782/FUL, Leys Cresc, SK – Approved 02/09/25

24/01658/FUL, Land North of North Road – Approved 04/09/25

## 8.0 LRALC Correspondence / Updates received, of particular note.

**8.1** The following entry, included in the Round Robin dated 28<sup>th</sup> July'25, was highlighted:

To note that the National Joint Council (NJC) for Local Government Services has agreed the national pay award for the period 1 April'25 to 31<sup>st</sup> March'26. The new pay rates represent a 3.2% annual increase.

Back pay will be applied in the September'25 payroll.

## 9.0 Accounts / Finance Matters

**9.1** The PC approved the following payment/s:

Nett	Vat	Total	Details / Comments
15,874.00	3,174.80	19,048.80	Balance due re MUGA build
1,377.51	0.00	1,377.51	Payroll Qtr Jul-Sept'25
415.04	0.00	415.04	PAYE re Payroll Qtr Jul-Sept'25
27.50	5.50	33.00	Qrlt Payroll Provision
303.50	0.00	303.50	SKN Printing Sept'25 edition
60.00	0.00	60.00	Bus Shelter cleaning
110.09	22.02	132.11	Litter Bins emptying Apr-Jun'25
943.87	188.77	1,132.64	Grass cutting Apr-Jun'25
2,015.00	0.00	2,015.00	Youth Club Spring'25
1,395.00	0.00	1,395.00	Youth Club Summer'25
520.00	0.00	520.00	VH Room Hire re youth club, Spring'25
360.00	0.00	360.00	VH Room Hire re youth club, Summer'25
1,600.00	320.00	1,920.00	Summer Sports Club '25
600.00	0.00	600.00	VH facilities re Summer Sports Club
25,601.51	3,711.09	29,312.60	Totals

**9.2** PC approved the cash balances held by the Parish Council at 31/08/25 along with corresponding bank reconciliation and bank statements. Documents duly signed.

**9.3** The PC reviewed and approved the comparison of actual 2025/2026 spend to budget, as provided by KB.

## 10.0 Parish Council Procedures

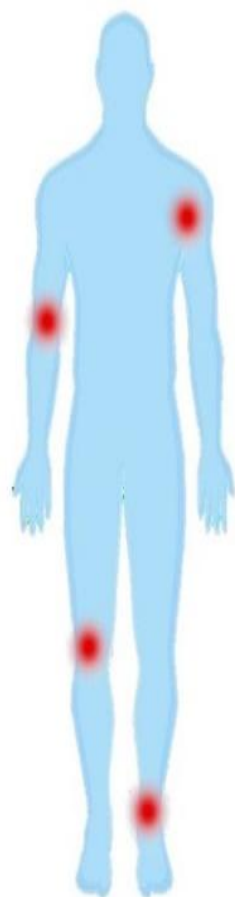
**10.1** The PC considered the creation of PC owned email addresses for all councillors and resolved that new email addresses were not necessary at this stage. Resolved.



- 11.0 War Memorial Clock**
- 11.1 Service and regular maintenance contract:** PA outlined his discussion with the Smith of Derby regarding the repairs and ongoing maintenance for the clock. It was agreed that unfortunately the PC does not hold sufficient funds at the moment, to cover the advised complete overhaul of the clock. As, currently three clock faces are operating correctly, PA would research cheaper options for reaching and removing the vegetation growth on the fourth face, which is causing the hands to stick. Pending.
- 11.2 War Memorial Grant Funding Options:** KB is continuing to research/source any appropriate funding options to help with clock maintenance costs.
- 11.3 Donations for War Memorial Maintenance Costs:** GB proposed that the PC consider appealing to the Church and village residents for donations towards the care and maintenance of this very much-loved village clock. The PC agreed to prepare an article for inclusion in the November edition of SKN. Action: PA/GB to send details to the editor of the SKN.
- 12.0 Highways and Footpaths**
- 12.1 LCC village lamppost numbering record:** This item to be carried forward to the next meeting.
- 12.2 Missing Reflector Posts on North Road, outside Oak Lodge:** The PC confirmed that four reflector posts had now been reinstated however, there remained one post (NK end of the section) still missing. Action: KB to report to LCC.
- 12.3 North Road Bus Stop, Hard Standing Request:** Following LCC's decision not to provide hard standing at this location, the PC had agreed previously to request that the bus stop be removed asap, in order to prevent the current dangers posed to individuals waiting for a bus at this unsafe position. PA expressed frustration at the lack of response from LCC. Action: PA to continue pursuing the issue with LCC.
- 13.0 Grass Cutting and General Outdoor Matters and Maintenance**
- 13.1 Refuse bins to be replaced with Lidded Bins as agreed by HDC Aug'24:** The PC confirmed that all VH car park bins had now been replaced with lidded bins as promised by HDC. Any village bins within the parish are scheduled to be replaced in due course. Pending.
- 13.2 Request for a refuse bin to be placed in the area of the Playing Field:** Following discussions with the village Bowls Club, it was agreed that, as the existing bin (currently located beside the club) is very seldom used, the PC would arrange for this bin to be relocated nearer to the MUGA. Thus, removing the need to purchase a new bin. Action: KC will inform KB of the new position so that she can ask HDC to amend their emptying schedule.
- 13.3 Overgrowth at the end of The Belt:** The PC confirmed that this area had now been cleared as requested. Resolved.
- 13.4 Rotted Gate Post, at the entrance to the outside gym area:** The PC confirmed that this gate post had now been repaired. Resolved.
- 13.5 Fence posts surrounding the Bowling Green in need of repair as reported by GB previously:** This item to be carried forward to the next meeting.
- 13.6 Alterations to access around MUGA for grass cutting team:** This action has now been carried out. Resolved.
- 14.0 Children's Play Area**
- 14.1 Regular Play Area Safety Inspections:** KC reported that he had discussed the recommended actions to be taken with the contractor and the PC agreed that the work should be carried out over the next few months. Pending.
- 14.2 Damaged surface in the basketball area:** This item to be carried forward to the next meeting. Pending.
- 14.3 Risk Assessment for the play area:** This item to be carried forward to next meeting. Pending.
- 15.0 Playing Field**
- 15.1 Playing Field Risk Assessment:** This item to be deferred to the next meeting. Pending.
- 15.2 NKFC Licence and Annual Charges:** KC intends to arrange a meeting with the Football Club. Pending.
- 16.0 Proposed MUGA (Multi Use Games Area)**
- 16.1 MUGA build Update:** The PC discussed quotes for CCTV to be erected in the vicinity of the MUGA, at a height of 4 metres. It was agreed to accept a quote for £1500. Action: KC to instruct the contractor.
- 16.2 PC to receive an update re MUGA overall costings to date:** The PC reviewed the updated schedule provided by KB and restated their decision to wait until all costs were known before applying to the CIC fund for reimbursement of any funding shortfall.
- 16.3 Administration of the MUGA booking facility:** KC reported that he had sourced an online booking facility that would give potential groups access in order to register bookings. Action: KC to forward to PA for testing, before going live.
- 16.4 Easement agreement between the PC and the Village Hall:** KC reported that the VH committee have requested an Easement Agreement be put in place to cover the installation (within the VH) of a dedicated meter, measuring the floodlighting energy usage. Action: KB to contact LRALC and the insurers for guidance.
- 17.0 Future Spending Options from the S106 and CIC Funding**
- 17.1** See item 16.2 re MUGA funding shortfall.
- 17.2** CIC reimbursing of the PC's previously agreed contribution, £2200, towards the Summer'25 Sports Club: Action: PA to advise once the cheque has been received.
- 17.3** The PC approved a CIC application for £4290 to cover the cost of 2025 Spring and Summer youth club terms. Action: PA to advise once the cheque has been received.



- 18.0 Village Communication**  
**18.1** SKN - No update.
- 19.0 Neighbourhood Plan, Monitoring and Review**  
**19.1** This item to be carried forward to the next meeting. Pending.
- 20.0 Community Emergency / Resilience Plan**  
**20.1 The review of SK's Community Emergency Plan dated June'14:** This item to be carried forward to the next meeting. Pending.
- 21.0 Proposed Summer Sports Club 2025**  
**21.1** The PC agreed all feedback had demonstrated that the 2025 club had been successful as previous years, and very well received by all participants. Resolved.
- 22.0 HDC Community Safety Vehicle proposed visit to SK**  
**22.1** KB reported that unfortunately, the previously reserved date with HDC, 14<sup>th</sup> October'25, was no longer available to South Kilworth. Resolved.
- 23.0 Village Youth Club (HCYC)**  
**23.1** The PC discussed financial viability of being able to continue supporting this worthwhile provision. KC suggested considering a less frequent pattern, as in, perhaps a fortnightly, or even monthly, club as opposed to the current weekly arrangement. The PC agreed this was worth considering. Action: KB to contact the club's organisers for feedback on attendance numbers so far in this Autumn term, and also to request their thoughts around a potential revised programme, with fewer sessions being held per month.
- 24.0 Community Action Fund, Rural Crime Round, 1<sup>st</sup>Sept to 17<sup>th</sup>Oct'25, up to £10k available.**  
**24.1** KB to check with OPCC (Office of Police and Crime Commissioner) re whether the cost of cctv would fit the fund criteria.
- 25.0 Items to be Considered for the next Agenda.**  
**25.1** GB reported that the hedge between the small VH meeting room and the bowling green has not been trimmed this season. Action: KB to report to HDC and request that the hedge be trimmed as soon as possible.
- 26.0 To Confirm Date of Next Meeting: Not yet confirmed.** Meeting ended at 9.15 pm **A copy of these minutes will be published on the South Kilworth Website, no later than thirty days from the date of the meeting.**



# HD Physiotherapy and Sports Injury Practice

**Sophie Davies**

Chartered Physiotherapist  
MCSP, HCPC Registered

07818 858741 or 07939 234579

[sophie@hdphysiotherapypractice.co.uk](mailto:sophie@hdphysiotherapypractice.co.uk)

[www.hdphysiotherapypractice.co.uk](http://www.hdphysiotherapypractice.co.uk)

Look for white swing sign:

**Walcote Road, South Kilworth**



- ✓ Expert Physiotherapy assessment, treatment and rehabilitation
- ✓ Certified specialist in JEMS movement analysis and treatment
- ✓ Treatments for all ages including children
- ✓ Treadmill and gym facilities
- ✓ Registered with all leading healthcare providers





## Kilworth Springs **PREMIER GOLF CLUB**

Founded in 1993 and overlooking the beautiful Avon Valley in South Leicestershire. Our 18-hole golf course and TrackMan powered driving range are the perfect place to unwind whilst working on your swing.

With a function room available for hire complete with event catering for weddings, special occasions and corporate events. All aspects are open to the public, so whether you are looking for a social game of golf, a drink or bar meal, a premier golfing venue to stage your golf tournament or somewhere to impress for your forthcoming wedding, party, or corporate event – Kilworth Springs Golf Club provides the finest facilities and catering for every occasion.



[www.kilworthsprings.co.uk](http://www.kilworthsprings.co.uk)



## South Kilworth School News



One of our favourite school traditions is Apple Pressing, and this year's event was so much fun.

Together, we made over 6 litres of juice to share, and the children remembered lots of apple facts!

Thank you to all the families who donated apples and to all the children for their endless enthusiasm.

Together, we crushed and pressed hundreds of apples, and everyone loved the taste of the juice, which was super sweet and sticky!

**Georgie Willock**



In Partnership with South Kilworth Parish Council

### **Sky Youth Club**

Free drop-in youth group

At South Kilworth Village Hall

Term-time Wednesdays

6.45 - 7.45pm for ages 8-16

7.45 - 8.45pm for ages 11-16 only

Please contact Kay Hillier for more information on  
kay.hillier@hcyk.org.uk or visit [www.hcyk.org.uk](http://www.hcyk.org.uk)

Charity Number: 1202997



## SKY Youth Group

The Youth Group is held weekly during term times at the South Kilworth Village Hall, with qualified staff at hand to deliver youth sessions for young people from the ages 8 through to 16. Attendance is free.

Should you wish for any further information, please do not hesitate to contact me.

**Kay Hillier, Youth Projects and Mentoring Project Coordinator.**

**Tel: 07704614154**



## Women's Institute – Thai Cooking Demonstration

The WI ladies were hosted by Vivi and Tim Mills at the Hollies in South Kilworth in October.

Vivi, who is originally from Thailand, provided the recipe list for Pad Thai and both entertained and educated us while she cooked for the group! Some of us experienced Palm Sugar and Tamarind, as we had not seen them before! After some Pad Thai tasters, we were treated to a lovely home-made Victoria Sponge!

A great evening of laughter, and looking forward to cooking some authentic Thai!







## Contact Us Today

Join the family of Home Instead CAREGivers and help make the world of difference.

- ✓ Award winning training
- ✓ Flexible hours
- ✓ Great rates of pay
- ✓ Make a difference to older people's lives

Contact us on: 01455 247100  
[www.homeinstead.co.uk/rugby](http://www.homeinstead.co.uk/rugby)

Each Home Instead Senior Care franchise office is independently owned and operated



# Fresh Air, Fresh Start: Winter Wellness in the Village

Winter's coming. But that is no excuse for missing out on fresh air and exercise. This village is so lucky, with many sports and activities to be enjoyed here in South Kilworth. These are some of those now available to everyone, right on our doorstep.

**Bowls:** an affiliated Club with Bowling Green and full club facilities at the Village Hall. New members are always welcome - enquiries: [krickhuss@hotmail.com](mailto:krickhuss@hotmail.com)

**Basketball:** there's now a full-size floodlit basketball court at the Sportsfield Muga.

**Football:** full-size pitches on the Sportsfield and five-a-side training pitch on the Muga are in regular use by junior teams during the season - enquiries: [brownny15lfc@btinternet.com](mailto:brownny15lfc@btinternet.com)

**Golf:** Kilworth Springs Golf Club, a stunning 18-hole course with driving range, bar, restaurant and function rooms.

**Netball:** floodlit, full-size netball court plus free-standing posts with regulation rings and height adjustments, which are stored in the village hall.

**Outdoor Adult Exercise Equipment:** seven pieces of exercise equipment are situated next to the playground. Ideal for a workout whilst the kids are enjoying the zip wire.



**Pickleball:** a new, fast-growing sport that has a court marked out on the Muga. Paddles, balls and a net are in the storage locker. A group of locals are already playing every week - contact [tina.morley@me.com](mailto:tina.morley@me.com) to join in.

**Table Tennis:** a regular Thursday evening club, 7-9 pm in the village hall. Come along and try it out.

**Tennis:** A full-size court on the Muga with a net stored in the locker. Already, a tennis group has been enjoying the new facilities.

**Yoga:** a regular class in the village hall (enquiries: [jessieliumcquillan@gmail.com](mailto:jessieliumcquillan@gmail.com) )

The village playground has always been popular, but now the Muga is attracting lots of interest from youngsters, enjoying the new facilities and floodlighting. There are also several new groups starting to regularly use the courts, so the Parish Council have introduced an online booking system for teams and groups to reserve the Muga for team games. Hopefully, this will avoid any double-booking clashes.

It's easy to reserve the court, just log in and register your team or group on the village website: [www.southkilworth.co.uk/Muga](http://www.southkilworth.co.uk/Muga).



The process and the 'rules' for using the court are all explained on the Muga page of the SK website.

Any feedback or enquiries about SK sports, the Muga, the website or this article to:

[parishclerk@southkilworth.co.uk](mailto:parishclerk@southkilworth.co.uk)





# South Kilworth Bowls Club

The outdoor activities of the Club have now finished, and the green is being prepared for the winter.

As I'm sure you all know, weather conditions have not been good for grass growing this year, but we have managed to maintain a certain amount of 'greenness' as can be seen from the photograph, thanks to our team of volunteer greenkeepers.

Another successful season has been completed, during which members have competed in internal competitions and seen visits from other local Clubs for friendly matches. Although we won a number of games, in the local derby with North Kilworth Bowls Club, we were unable to win the Entwhistle Cup, which both teams have competed for since 1934!

Although the green is now closed for the winter, if you would like to 'try your arm', we run a session of indoor bowling at Harborough Leisure Centre on Wednesday afternoons. Please contact Alan Ainsworth (575812) for more details.

Apart from our normal activities, this year we were very pleased to welcome Year 6 pupils from the school who used the green on Wednesday afternoons to learn the art of lawn green bowling. Hopefully, one or two might develop a lifetime liking for the game! Please Mum and Dad keep their interest going and bring them along from April next year, outside of school time, you might enjoy the game yourselves!

Although the green is now closed for the winter, if you would like to 'try your arm', we run a session of indoor bowling at Harborough Leisure Centre on Wednesday afternoons. Please contact Alan Ainsworth (575812) for more details.

Merry Christmas and a very happy New Year from all at the Bowls Club.

**Keith Rickhuss**



## Court Lane Logs

Approved Suppliers of Ready to Burn  
Firewood



Locally Sourced  
Selected &  
Seasoned Logs

**Delivered in Bulk Bags**

Also Available in Barrow Bags and Handy Bags



Order Now For Delivery

**For further information and prices,  
call John on 07973 802466**

## JR Pest Control



Ants | Bed Bugs | Bees | Cockroaches  
Fleas | Mice | Moles | Moths  
Rabbits | Rats | Squirrels | Wasps

**Comprehensive Pest Control Service**  
Residential, Commercial, Industrial & Farms  
Evenings, Weekends & Emergency Callouts  
Investigation, Control & Prevention  
BPCA Qualified & Fully Insured

Tel: 07967 821421  
E-mail: [enquiries@jrpestcontrol.co.uk](mailto:enquiries@jrpestcontrol.co.uk)

## Kilworth Accountancy

*Experience counts*

An accountancy practice in the village for  
all your accounting and taxation  
requirements.

Qualified accountant and tax specialist  
with over 35 years experience of routine  
compliance and the delivery of  
innovative solutions to strategic and  
taxation problems.

No charge for initial assessment.  
Why not ask the Accountants in  
Kilworth?

Email  
[martinshave@kilworthaccountancy.co.uk](mailto:martinshave@kilworthaccountancy.co.uk)  
Or call  
01858 575481 or 0791 865 1375

# Birds at Stanford Reservoir: What an outstanding few months!

Autumn is usually an exciting time for birding at Stanford Reservoir, and this year has lived up to expectations, and some!

It all began on a damp, dreary August 19<sup>th</sup>. The ringing group were into their intensive week of ringing. The number of warblers had been excellent, but the weather conditions didn't look favourable on this particular day.

However, as is often the case, the weather did its trick when Mick returned from a net round with a small number of birds and a big smile on his face. He didn't say what it was, but all was revealed when it was removed from the bag – a stunning Barred Warbler, the first ever record for Northamptonshire and for the site. Barred Warblers are difficult to see in the field, and there are very few inland records (there has only been one previous record in Leicestershire and Rutland, which was also a bird trapped and ringed). This was an amazing turn up and just reward for the efforts of the ringing group.



Barred Warbler



Wood Warbler

## Another great bird

On August 22<sup>nd</sup>, with daily ringing still in full swing, another scarce warbler was caught. Not as rare as the Barred but still a cracking bird - a Wood Warbler. This was only the 5<sup>th</sup> site record (previous ones being 1982, 1977, 1999 and 2020). This was also the first in Northamptonshire in 2025.

For me, this was the second new bird for my personal site list in 2025. I sometimes go a year or two without adding to my personal tally, so this was exceptional and surely the end of this purple patch (or not).

## September

I was away for a week in Northern Spain in early September, and as I was about to leave, it was clear that an unprecedented influx of Glossy Ibis into the country had started, with over 600 birds recorded and flocks as large as 90 plus at coastal sites. This is a species never recorded at Stanford Reservoir, so surely this was our time – but I was in Spain!

By the time I had returned, numbers being reported had reduced, but there was still a chance. In reality, there were probably only a couple of spots around Stanford, where we could get one, so I decided to focus on these. On September 19<sup>th</sup>, I casually walked to the back of the settling pond to check a particular small area of mud/water, which I thought could be good for a Glossy Ibis. To my complete surprise and delight, three birds flew from the 'puddle' towards the golf club – they were Glossy Ibis, a new bird for the site. I tried to relocate them that day, but was unsuccessful, so I assumed they had moved on. However, they settled into a daily routine of arriving at sunrise, feeding for 30 minutes or so before heading off. Sadly, one of the birds had a damaged wing, and the number soon



Glossy Ibis

reduced to two, but they continued the routine for the best part of 4 weeks, showing well at times.

So that was a hat-trick of new birds for me for the site in 2025 – amazing! However, I hadn't finished yet. On September 23<sup>rd</sup>, I was checking for the Bittern, which had been frequenting the reedbed since August, and my attention was drawn to an interesting duck which I immediately thought looked good for a Lesser Scaup.





This species can be tricky, though and is made more complicated with other ducks that hybridise and produce offspring that can look like birds such as Lesser Scaup, normally a resident of the USA. I reminded myself of all of the salient identification points and checked them off one by one. Yes – I was sure I was looking at a



Lesser Scaup

drake Lesser Scaup, the first ever record in Northamptonshire and for the site. Unlike the Barred Warbler, this was a much easier bird to see for the travelling Northamptonshire birders who were delighted with this smart first for their county. This is also a national rarity, with around 10 records each year.

September wasn't finished, though, with the first Garganey of the year on the 25<sup>th</sup>. The following day, I picked up

a small grebe which looked interesting, and there it was, the first Slavonian Grebe at the site for 22 years and another new bird for me for the site. It only stayed for the day, but showed really well.

So that was a crazy two months with three new birds for the site (two of which were first records for Northamptonshire) and five new birds for my personal list, taking this up to 207 species.

Other records during that period included Black-necked Grebe, Bittern, Pied Flycatcher, Little Gull, Ruff, Cattle Egret, several Osprey, Marsh Harrier, Tree Pipit, Red-crested Pochard, Whimbrel, Whinchat and Little Ringed Plover.



Slavonian Grebe

**Chris Hubbard**



## Monthly Funding Information

### Community Grants and Funding Opportunities

Do you have a community activity that you would like funding for? There are numerous funding options for voluntary & community sector groups and organisations, charities and social enterprises. Of course, each grant has different criteria, so the scope is wide-ranging. Our Parish Council is encouraged by both the Leicester County Council and Harborough District Council to make this information available to the whole community. There are over 45 new grants that have come available in the latest monthly bulletin, and this can be viewed on the South Kilworth website: <https://www.southkilworth.co.uk/> and directly on the Leicestershire Communities Grants and Funding page: <https://www.leicestershirecommunities.org.uk/grants/>

The document lists current grants and funding opportunities for:

- Voluntary & Community Sector Groups
- Charities and Social Enterprises
- Some Local Authorities and partner organisations (marked with \*)

It includes new grants, deadlines, eligibility criteria, and support resources.

# JOSEPH MORRIS

## *High Class Family Butchers*



### South Kilworth Shop

#### Opening Times

Monday – 7.00 am to 5.30 pm

Tuesday – 7.00 am to 5.30 pm

Wednesday – 7.00 am to 5.30 pm

Thursday – 7.00 am to 5.30 pm

Friday – 7.00 am to 5.30 pm

Saturday 7.00 am – 1.00 pm

Sunday – Closed All Day

Tel: 01858 575210

Email: [shop@joseph-morris.co.uk](mailto:shop@joseph-morris.co.uk)

Web: [www.joseph-morris-butchers.co.uk/](http://www.joseph-morris-butchers.co.uk/)

## Naturally reared meat delivered to you

### OUR LIVESTOCK

All our livestock is sourced from local farms. This practice not only supports the local farming community but also ensures uniformity of finest quality. Travelling distances are short, minimising stress for the animals – animal welfare being one of our main priorities.

