

South Kilworth News

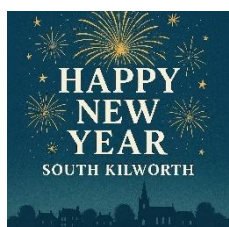
January 2026



South Kilworth Directory

Name	Contact details	Description
Allotment Committee	Les Lucas 07712296376	For the green-fingered aspirants
Bowls Club	Gerry Byrne 01858 575080 gerrypatrickbyrne@gmail.com keithrickhuss@gmail.com	New or potential members are welcome to come along on Wednesdays at 3 pm, for a roll-up, information or advice.
Community Café	Tina Morley 07786496041	Community café is usually held 2 nd Tuesday of the month in the Village Hall, 11am-1pm. See posters around the village for details.
First Saturday Weavers at SK Village Hall	Helen Brotherton 01455554647 helen.brotherton@icloud.com	An informal group of hand weavers who meet on the first Saturday of the month
FOSKS PTA	FOSKS@ski.learnat.uk	Friends of South Kilworth School, Parent Teacher Association.
Kid's football	Brian Robbins 07795105591	On the village hall playing fields
Kilworth Help Group WhatsApp	To be added, WhatsApp administrators Kate 07990504734 or Suzanne 07889449180	Set up to help people during Covid, but now used for general enquiries (not advertising). Covers North and South Kilworth.
Kilworth Village's Facebook pages	1. The Kilworth villages and 2. North and South Kilworth village.	To join the groups, you need to have a Facebook account and search for the groups to request to join.
KOIL	Mark and Sarah: admin@koil-group.com	Group ordering of Oil
Korks (ladies only)	Contact Claire Hubbard on 07590254043 to be added to the Korks WhatsApp group.	A ladies' social group from the Village meets monthly. Add your name to the mailing list.
Luncheon Club	Rita Hallam 575449	
N. Kilworth Sparrows Women's Netball team	Contact: nksparrows@gmail.com, or Emily Conlon 07449968444	Combining North and South Kilworth residents. facebook.com/NKSparrows
Parish Council	Parish Clerk: Karen Brown parishclerk@southkilworth.co.uk	Meet on the second Tuesday of each month at 7:15 pm. Chair: Phil Alcock 575978 philalcock@aol.com
SK Security WhatsApp group	Pete Moore 07775795761	Alerts regarding security issues in the village are posted with a link to the Community Police. Contact Pete to be added.
Skittles Teams	Ray Dorman 07780846002 Tracey 07733235306 (Ladies team)	Games take place at the pub
South Kilworth Art Group	Maggy Roberts 07912031816 and 01858682173 magsroberts@yahoo.co.uk	Thursdays, 9.30 am to 12.00 Midday, Village Hall
South Kilworth Neighbourhood Plan	Contact the Parish Council	www.harborough.gov.uk/directory_record/2256/south_kilworth_neighbourhood_plan
South Kilworth News	sknews@southkilworth.co.uk	Community news for the village – contact us with ideas, photos & news.
South Kilworth Village Website	Kevin Coyne: admin@southkilworth.co.uk	southkilworth.co.uk.
St Nicholas Church	Avon Swift office Lutterworth: 01455 558797 https://www.avonswift.co.uk/ https://www.facebook.com/avonswiftbenefice	Administrator: Karen Morgan: 01858 882032 PCC Secretary: Joanna.wilson17@btinternet.com & 01455 558 372 Church Warden: James Perowne 07810 886030
Table Tennis	Bob Morley 575832 bobjmorley1953@gmail.com	Thursday at 7 pm in the Village Hall
Travelling lunch club	Alison Anderton: 0870 240 6993	Lutterworth Age Concern currently has two travelling lunch clubs, travelling to different pubs each month.
Village Email circulation list	southkilworthlist@gmail.com	Send an email to become a member of this list. It is a postbox that doesn't reply! If you send something for circulation, please put your contact details in the email. Email addresses are never shared and cannot be used for commercial purposes.
Village Hall Committee	Secretary:Tina.morley@me.com 07786496041	Bookings: colinjedderrick@btinternet.com 07711054622
Women's Institute	nkilworth.wi@lrfwi.org	3 rd Thursday of the month at Belgrave village hall, N. Kilworth LE17 6EZ at 7.30 p.m. Visitors and new members welcome.
Yoga	Jessie McQuillan: 07860937892	Tuesdays, ladies 6 pm-7:30 pm in the Village Hall. All abilities and those new to yoga are welcome.
Youth Club - SKY (8-16yrs)	Kay Hillier, Youth Projects and Mentoring Project Coordinator 07704614154 kay.hillier@hcyc.org.uk	SKY Youth Club, all ages, meets in the village hall every Wednesday, 6:45-7:45pm. Ages 11-16 only, 7:45 – 8:45pm. Admission is free.

From the Editorial Team



Happy New Year! The next edition will be in March 2026, and the deadline for the submission of news and articles is 15 February 2026. The SK News is published every other month. The electronic version can be found on the South Kilworth website. Please send news, photos, and articles to sknews@southkilworth.co.uk. News that does not coincide with the printed SK News may be uploaded to the South Kilworth website. Links to our advertisers can also be found on the South Kilworth website.

The Cover Page and Directory Page are sponsored by <https://www.novatesolutions.co.uk/>

South Kilworth Notices

South Kilworth's next CAFÉS

January 13TH

February 10th



Free cake and a cuppa

Village Hall 11-1pm



RIP Rita Hallam. It is with great sadness that we share the passing of a cherished village icon, Rita Hallam, who died peacefully on 28th December 2025. We extend our heartfelt condolences to her family, friends, and all who knew and loved her. The funeral service will take place on Wednesday 14th January, 2pm at South Kilworth Church, followed by refreshments at Kilworth Springs. All welcome.



Church Services at St. Nicholas' South Kilworth

All very welcome!

Sunday 25th January 08:30am Holy Communion

Sunday 22nd February 8:30am Holy Communion

*The church is open for all visitors every Sunday
and Wednesday 10.00am - 4.00pm*

2026 Winter Bird Walk

Sunday, January 18th

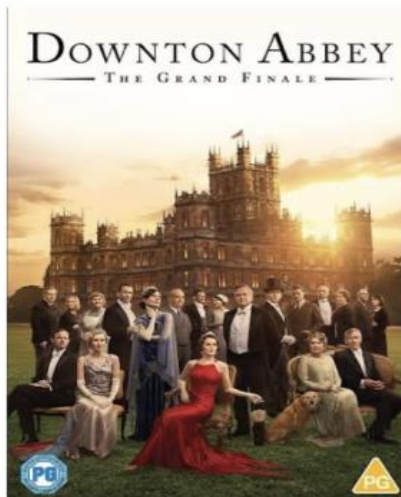
Stanford Reservoir on Sunday. Contact Chris if you would like to come along:

c.hubbard2@icloud.com 07803 374541

Meet at the Welford Road car park at 8am.
The walk will last 2-3 hours.

MOVIE NIGHT

JANUARY 31



**AT SOUTH
KILWORTH
VILLAGE HALL**

7 pm
Bar open
Only £7

Free crisps / ice cream
in the interval

TICKETS (are limited) from Jules
Andrews : post@sltonline.co.uk

Women's Institute Invites New

Members  INSPIRING WOMEN

The WI, covering North & South Kilworth, Husband's Bosworth and surrounding parishes, welcomes new members to attend on the 3rd Thursday of the month in North Kilworth village hall at 7:30 pm, LE17 6EZ. For more information contact Elaine Derrick 07985935498.

Upcoming events:

15 Jan: Joanne Mungovin – *A talk on Joseph Merrick (The elephant man)*

19 Feb: A Vet from the Broughton/Cross Country Vets practice in Lutterworth - *A talk about their work*

26 March: Guided tour of Stanford Hall followed by refreshments

Save the Date A Spring Concert



Performed by **The Harborough Big Band**

Tickets £10.00 to include a glass of wine.

Saturday 18th April at 7.30pm

St Nicholas' Church, South Kilworth

*More information in the March edition of the
South Kilworth News*



Paddling with Purpose: Molly Sandercock

When you think of wild water canoeing, some may picture Burt Reynolds battling the rapids, or—more fittingly for today—Olympic medallist Mallory Franklin. But South Kilworth has its own star: Molly Sandercock.

Molly's family has farmed in South Kilworth for generations. Her 2x great-grandparents lived here, and she is named after her great-grandmother. This month brings together two lovely full-circle moments.

In the March 2023 SK News edition, Rita Hallam recalled the large Congregational Church Sunday School once run by Molly Sandercock (Named Mary, but known as Molly) and Margaret Deacon. We also reprinted an article Molly wrote for the January 1977 South Kilworth News about the annual Sunday School Party. Now, exactly 49 years later, we turn our attention to Molly's great-granddaughter, Molly!

Our second full-circle moment takes us to November 2024, when we featured Beaver Scout leader 'Badger' Beth Rogers. When asked to suggest young villagers with a story to tell, she immediately mentioned

Molly. After a few delays, the timing aligned perfectly for a January 2026 interview — and it was Molly's early connection with Liz through Scouts that set her extraordinary journey in motion. And what a lovely, modest and unassuming person Molly turned out to be when we met up with her and her mother, Sarah.

Molly was around ten when she joined a six-week canoeing taster course with the Breakout Canoe Unit, the dedicated canoeing section of Leicestershire Scouts. Based in Hinckley and run by qualified Paddle UK volunteer instructors, the unit focuses on safety, skills and opportunities for training and competition. Molly soon progressed into canoe slalom and wild water racing.

Her talent was clear from the start. She was invited to train with two other promising young paddlers, Kerry and Emma Christie, and her competitive career quickly gathered pace.

In 2021, Molly raced internationally for the first time at the ECA Junior & U23 Wildwater Canoeing European Championships in Solkan, Slovenia, finishing 19th in the Junior Women's K1 Classic.

In 2022, she represented Great Britain again at the Championships in Banja Luka, Bosnia and Herzegovina, competing in the Junior Women's K1 sprint and classic events and securing a 13th-place finish in the sprint.

In 2023, at the ICF Junior & U23 Wildwater Canoeing World Championships in Roudnice nad Labem in the Czech Republic, she helped the U23 Women's K1 team bring home gold.

In 2024, competing in Dallenwil, Switzerland, Molly claimed second place overall in the Women's Senior Kayak (K1) series — and went one better in the Women's Canoe (C1), dominating the series to take first place.

For those unfamiliar with the sport, Molly explained that a sprint lasts around 1–2 minutes, while a classic race runs for about 25 minutes. Training is year-round and weather-proof; she recalls winter sessions where her paddle was coated in ice. Technique is everything: in the powerful 'swing two' stroke, the paddle's connection with the water must be precise, while in the slalom 'cross-over', the amount of water caught in each strike is crucial.

Her journey hasn't been without drama. One video she shared shows her in a double canoe hitting low-hanging rocks and being knocked flat — even the videographer gasped. Molly assures us her buoyancy vest absorbed the impact, and she was completely fine. A more sobering moment came when her canoe rolled among rocks and into a whirlpool. Unable to right it, she genuinely felt in danger before being "spat out" unharmed.

If you've spotted canoes on the canal near South Kilworth, there's every chance you've seen Molly training.





Her adventurous spirit extends beyond racing. Recently, she served as Head of Paddle at Camp Katonim, a children's summer camp on Lake Simcoe in Ontario, Canada. Leading paddle sessions for children aged 4–15 across canoes, kayaks and paddleboards, she quickly learned that fun must come before technique. Weekends were free for exploring — including a memorable trip to Niagara Falls.

Molly is not currently competing and is in her final year studying Sport Science, Health and Nutrition at Nottingham Trent University. We wish her every success with whatever comes next.

Toni & Rob Snell

Carol Service at St Nicholas' Church



Christmas Eve saw a packed church as the South Kilworth and surrounding community prepared for the coming of Baby Jesus, with Christmas Carols being sung and members of the parish leading us through the readings from the Bible. It was a special evening.



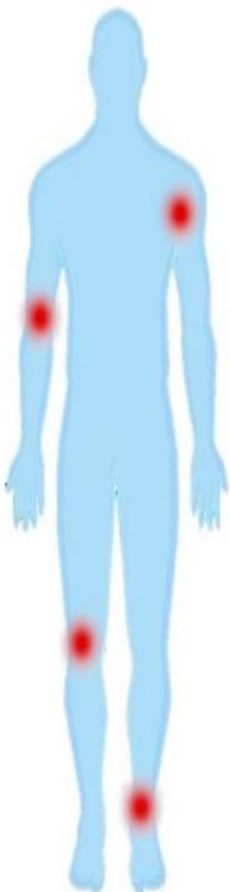
HD Physiotherapy and Sports Injury Practice

Sophie Davies
Chartered Physiotherapist
MCSP, HCPC Registered

07818 858741 or 07939 234579
sophie@hdphysiotherapypractice.co.uk
www.hdphysiotherapypractice.co.uk

Look for white swing sign:
Walcote Road, South Kilworth

- ✓ Expert Physiotherapy assessment, treatment and rehabilitation
- ✓ Certified specialist in JEMS movement analysis and treatment
- ✓ Treatments for all ages including children
- ✓ Treadmill and gym facilities
- ✓ Registered with all leading healthcare providers





Building Excellence
AWARDS 2023



Regional Winner

**LAMBERT &
WRIGHT**
BESPOKE PROPERTIES

Lambert & Wright are an award winning Property
Renovation Team covering the Midlands.
With over 30 years of experience we handle
everything from plumbing and electrics to period
restoration.

For a free consultation please call or email:-
07866 741261 (Jason)
info@lambertandwright.co.uk

Bliss & Beauty
The Complete Skincare Specialists



Bliss & Beauty is a skin and beauty salon nestled in a barn in the South Leicestershire countryside, with free parking right outside the door. While we specialise in skin transformations, we also offer all your usual beauty treatments from Aromatherapy Massage to Waxing. Head to our website where you can read over 1000 5* reviews and see this month's special offers.

BOOK NOW to see our brand new rooms at Kilworth House Hotel!
We are thrilled to be partnering with this incredible
well-renowned venue for all of your beauty needs.



Shop for products, gift vouchers & book online at
www.blissandbeauty.co.uk

01858 571 244 | 07773 234 355 | info@blissandbeauty.co.uk | www.blissandbeauty.co.uk

Dog Lane, South Kilworth, LE17 6DY | Kilworth House Hotel, Lutterworth Road, North Kilworth, LE17 6JE

Harborough District Council – Household Support Fund



The Household Support Fund (HSF) is now open. It opens up 2-3 times a year and is aimed at helping low-income individuals and families. Here is a link for the info: www.leicestershire.gov.uk/adult-social-care-and-health/assessment-and-eligibility-for-care-and-support/household-support-fund

[and-eligibility-for-care-and-support/household-support-fund](http://www.leicestershire.gov.uk/adult-social-care-and-health/assessment-and-eligibility-for-care-and-support/household-support-fund)

Two things you need to know: 1. There is a pot of money allocated to serve the HSF, and when it's gone, it's gone. The window for applications is normally only 3-4 weeks, then it is closed whilst the pot is topped back up for the next round. So please check the link and make sure it is open first, and it is best to **submit an application immediately**. Check the website to see if you qualify. 2. HDC Customer Services is a referral point, and we can help if you think you qualify. Each week, we process several hundred applications.

Carol Thay, Climate Impact Officer



www.nenettechocolates.co.uk

m: 07811 170633

e: info@nenettechocolates.co.uk



Thank you to everyone who purchased chocolates from me in the run-up to Christmas. And to those of you who also took the time to write a review. Your support for my small business is much appreciated.

This January and February, I shall be taking a short break while I prepare your chocolate Easter treats. For urgent chocolate requirements, get in touch using the contact details above.



JR Pest Control



Ants | Bed Bugs | Bees | Cockroaches
Fleas | Mice | Moles | Moths
Rabbits | Rats | Squirrels | Wasps

Comprehensive Pest Control Service
Residential, Commercial, Industrial & Farms
Evenings, Weekends & Emergency Callouts
Investigation, Control & Prevention
BPCA Qualified & Fully Insured

Tel: 07967 821421
E-mail: enquiries@jrpestcontrol.co.uk

Court Lane Logs

Approved Suppliers of Ready to Burn
Firewood



Locally Sourced
Selected &
Seasoned Logs

Delivered in Bulk Bags

Also Available in Barrow Bags and Handy Bags



Order Now For Delivery

**For further information and prices,
call John on 07973 802466**



Become a Care Professional

As a Care Professional working at Home Instead, you are more than a carer to our clients. You are their support, their safeguard, companion and friend. That's why we take good care of you, so you're able to deliver the best for them.



Telephone Number
01455 247 100

Home's the place we all want to be, and our highly trained Care Professionals provide essential support to keep our clients safe and happy in this very place.

Our highly respected Care Pros are at the heart of everything we do at Home Instead, without them we couldn't provide the highest quality home care out there. We offer you:

A variety of hours
and working patterns

Best in class training
and career progression

Wellness programme
and well-being resources

Discounts on shopping,
eating out and more

We are Home Instead® and we are changing the UK's attitude to care whilst supporting people at home.

Join our team

If you are open minded, and eager to learn and make a difference, then we want to hear from you!

Each Home Instead franchise is independently owned and operated. Copyright © Home Instead UK® 2025.



Home Instead Rugby
01455 247100
Snapethorpe House, Rugby Road,
Lutterworth, Leicestershire LE17 4HN

recruitment.rugby@homeinstead.co.uk
www.homeinstead.co.uk/rugby

KORKS

Korks is a ladies' social group from the Village, and all ladies are welcome to join. You need to join the KORKS WhatsApp group to find out about events. You will be notified at least a month before the event of all the details. You can then sign up for the event if you are interested. If you are not on the KORKS list, please WhatsApp Claire on 07590254043 to be added.

Look out for the next get-together date in January on WhatsApp to plan the 2026 events – all invited to attend.

Wreath Making – November

Thank you, Caroline D., for organising the wreath making evening in the Village Hall. This ever-popular event was also attended by friends and relatives of the Korks. What a great evening of creative fun. We all went home with such professional-looking wreaths, each one completely unique!



Full bathroom design and installations.

Full kitchen design and installation.

All types of tiling.

For a free quotation please call or email Jason:-

07866 741261

jasonfandw@hotmail.com



Have you ever fancied having a go at playing PICKLEBALL?

The new sports facility at the village hall (MUGA) has a pickleball court, and we have a very informal group (mainly beginners) that plays at 11am on a Monday and 4pm on a Thursday. Outside these times, anyone can book the court by using the following link. (You need to register first)

[https://www.supersaas.co.uk/schedule/South_Kilworth_PC/Sports_Court_\(MUGA\)](https://www.supersaas.co.uk/schedule/South_Kilworth_PC/Sports_Court_(MUGA))



In the lock-up by the side of the court is a pickleball net (easy to assemble) and 4 bats and balls for you to use. If you book the court, you'll be given the key safe number to access these. We were lucky that we got a grant from Harborough District Council ("Active Together") to pay for these.

We have a WhatsApp group you can join to let everyone know who is playing. Please message me to get added to this group. Hope to see you on the court sometime.

Tina Morley: 07786496041

South Kilworth Bowls Club

Our green is recovering nicely from the effects of the very enjoyable summer we had this year. The grass is now growing well after the scarifying, top dressing and seeding work carried out by our green staff. The seed has taken well, encouraged by the recent wet weather, and all looks good for the new season to start in April.

The turf itself is, of course, the most important part of our facility, but we are also about to start some work to improve the immediate surroundings of the green with the aid of a grant from the Community Fund of Market Harborough District Council. This will increase the space and improve safety on one side of the green, which is very busy when we play matches with visiting teams.

During the winter months, some of us play indoor bowls at the Leisure Centre in Harborough. It's similar to normal outdoor bowls; the rules are the same, but we're playing in dry and warm conditions!

Please come and join us if you would like to give it a try. Wednesday afternoons 2.00 – 4.00 pm, contact Alan Ainsworth on 575812. A healthy and happy 2026 to everyone.

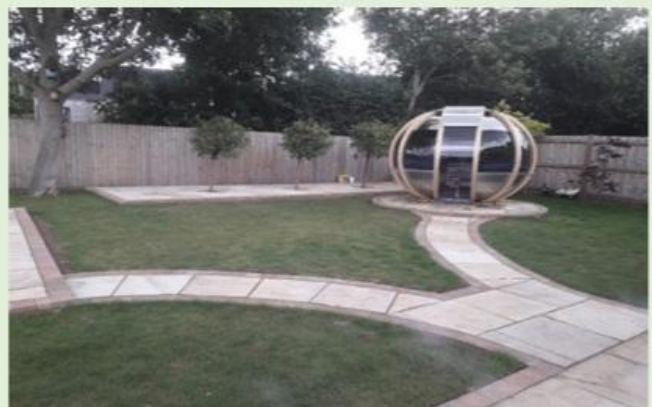
Keith Rickhuss



DONALD CAMPBELL LANDSCAPES

- ✓ LANDSCAPING
- ✓ PAVING AND WALLING (INCLUDING STONE)
- ✓ SPECIALISING IN THE RENOVATION OF OLD PAVING STONES
- ✓ FENCING
- ✓ PERGOLAS
- ✓ REPOINTING AND RELAYING
- ✓ GARDEN MAINTENANCE

 **07817 381 244**



JOSEPH MORRIS

High Class Family Butchers



South Kilworth Shop

Opening Times

Monday – 7.00 am to 5.30 pm

Tuesday – 7.00 am to 5.30 pm

Wednesday – 7.00 am to 5.30 pm

Thursday – 7.00 am to 5.30 pm

Friday – 7.00 am to 5.30 pm

Saturday 7.00 am – 1.00 pm

Sunday – Closed All Day

Tel: 01858 575210

Email: shop@joseph-morris.co.uk

Web: www.joseph-morris-butchers.co.uk/

Naturally reared meat delivered to you

OUR LIVESTOCK

All our livestock is sourced from local farms. This practice not only supports the local farming community but also ensures uniformity of finest quality. Travelling distances are short, minimising stress for the animals – animal welfare being one of our main priorities.



Bird News from Stanford Reservoir

Following the last article, which covered a run of excellent birds at the reservoir, things have certainly quietened down.

A Black Redstart was seen briefly and photographed on October 17th. Unfortunately, the news was only received after dark – it was checked the following day, but there was no sign of it. This was the first record since 2004, so a really scarce visitor to the site.



Three Whooper Swans flew through on October 8th, with a further two spending the day at the site on October 22nd. Egret numbers have jumped dramatically, with a site record count of 30 Great Egrets on November 28th. This group has included a bird with a red colour ring – after several failed attempts, the code was finally read as 'AJU'. This confirmed that the bird had been ringed as a chick in the nest on April 18th at Shapwick Heath, Somerset. It had done some travelling since then, having been reported in Warwickshire on July 8th, Lancashire on July 22nd and Shropshire on July 27th.



At the time of writing this article, a single Glossy Ibis was still present, having been around for 85 days and is now the longest-staying Glossy Ibis in Leicestershire and Rutland ever. Will it hang around long enough to be one of the first species recorded in 2026?



The Lesser Spotted Woodpecker is the UK's smallest woodpecker, around the size of a House Sparrow. It is red-listed in the UK due to a severe population decline, estimated to be in the order of 80% since the 1950's. I was lucky enough to find one feeding near the dam on November 7th. Let's hope this is a sign that we still have a small number of birds clinging on locally.

A Firecrest was ringed by the group on November 16th, the first record of 2025 and follows two recorded in 2024.

Technology is always moving on, and this is certainly the case in

ornithology. The ringing group have a Motus receiving station fitted at the site, which is part of a global wildlife tracking system used to study the movement of birds, bats and even insects.

Animals are fitted with small VHF radio transmitters, each emitting a unique radio pulse every few seconds. When a bird flies within range, the station records data including the identification, date and time.

The group had an exciting recovery from this system the other day when their Motus receiving station logged two Jack Snipe. Both of these birds had been tagged at Ottenby, Sweden. One left Sweden on November 15th, arriving with us on November 17th (1210 km in two days or 23.2 km/h). The other left Sweden on November 19th, arriving with us on November 20th (1171 km or 39.6 km/h). Jack Snipe are elusive wading birds and the smaller cousin to our Common Snipe. Without this technology, these birds would have gone undetected, and the true extent of their winter migration would remain a mystery.



I will be doing a winter bird walk at the reservoir on Sunday, January 18th 2026. If you would like to come along, drop me an email or message. Plan will be to meet at the Welford Road car park at 08.00, and the walk will last 2-3 hours.

Happy New Year!

Chris Hubbard, c.hubbard2@icloud.com, 07803 374541



The Hollies Bed & Breakfast South Kilworth

Hosts, Tim & Vivi Mills would love to welcome visiting family and friends of South Kilworth

residents to his lovely 200-year-old upmarket bed and breakfast guest house and venue.



Situated next to the pub, Tim has 6 beautifully appointed smoke-free guestrooms with all the expected amenities, including a barbecue and a terrace area. He offers a Full English/Irish breakfast daily.



For 'Home Cooked at the Hollies', try the dishes from our Thai menu. We make Tom Kha Gai, Thai Green Curry, Pad Ka Pao and Massaman Curry to name a few. We also do traditional pub classics: Burgers, Pies, Bangers and Mash, Chili Con Carne, Spaghetti Bolognese & Beef Bourguignon. We provide vegan, vegetarian and gluten free options. Please give us a call – we do need some notice (for large orders, the day before please) as we only use authentic ingredients and freshly prepare our meals.

There is no excuse for not having family and friends over for a visit with this home-from-home location on our doorstep. Please call Tim on 07811 652267 or email: Mills.Tim3@icloud.com to check on availability or order food.

A.T. BROWN & SON CLEANCARE SERVICES



PROFESSIONAL CARPET &
UPHOLSTERY CLEANERS



Telephone: 0116 279 6969

Mobile: 07442 531 284

matt@atbrownandson.co.uk www.atbrownandson.co.uk



- Business stationery
- Wedding stationery
- Menus
- Promotional Items
- Large Format
- Labels
- Invites
- Design Services

and much more

Offering a hassle-free, cost-effective, single source print solution with free delivery to local businesses

We go over and above usual customer service

We come to you to discuss your personal print requirements

10%
off your
first
order

01455 207 508

lutterworth@minutemanpress.com
www.lutterworth.minutemanpress.co.uk

14c High Street | Lutterworth | Leicestershire | LE17 4AD

DRAFT MINUTES OF A PARISH COUNCIL MEETING FOR SOUTH KILWORTH

Held on Tuesday, 9th December 2025, 7.15p.m.

Minutes Ref: 858/1225

1.0 Confirm Members Present

Cllr P Alcock -Chair

Cllr K Coyne (KC) – Vice Chair

Cllr G Byrne (GB)

Cllr T Wood (TW)

Cllr T J Wood (TJW)

Parish Clerk – Mrs K Brown (KB)

2.0 To Receive Any Apologies None

3.0 Disclosure of any Member's Interests None

4.0 To Confirm Other Attendees Three

5.0 To Confirm Minutes of Previous Meeting of Council, held on 11th Nov'25

These minutes were confirmed to be a true record of matters discussed, and decisions reached by the Parish Council, and duly signed.

6.0 Public Participation

6.1 1. Carol Thay, Climate Impact Officer for HDC, introduced herself and outlined her responsibilities in her new role – covering local flooding prevention, environmental and renewables initiatives, and advice regarding associated potential funding options.

PA thanked Carol for taking the time to meet with the councillors and sharing her experience around some of the local matters that she has been involved with.

2. Two representatives from the SK News were in attendance and summarised their discussions with North Kilworth, to help them reinstate their local newsletter.

The PC also received an overview re the SKN average income and expenditure. The editors provide their services on a totally voluntary basis, and all advertising income goes towards publication costs.

The PC suggested that they could consider including a provision in the 2026-27 budget/precept request to allow a moderate contingency sum to be set, in support of the publication.

Prior to the above, PA expressed the PC's immense gratitude for the amazing work that the editors do, in compiling excellent varied and interesting content in each and every edition. Regular feedback from residents evidenced the wonderful community spirit that the publication helped to inspire.

7.0 Planning Matters

7.1 New Application/s: None

7.2 Planning Decisions / Updates Reported:

25/01337/FUL – Approved 3/12/25. The PC have requested feedback from HDC regarding their comment made as a consultee.

7.3 Enforcement Cases Raised:

22/01299/FUL, South Lodge, Walcote Road, allegation that the ongoing build is not to plan – the PC noted.

8.0 LRALC Correspondence / Updates received, of particular note. None

9.0 Accounts / Finance Matters

9.1 The PC approved the following payment/s:

Nett	Vat	Total	Details / Comments
1,395.43	0.00	1,395.43	Clerk's Qrtly Proll Oct-Dec'25, + mileage
392.30	0.00	392.30	PAYE + Er's Ni
30.00	0.00	30.00	Payroll Provider re Oct-Dec'25
250.00	0.00	250.00	Memorial Clock Winding - 2025
10.00	0.00	10.00	Annual Church Tower Space Rental
64.33	12.86	77.19	Expenses for Reimbursement
2,142.06	12.86	2,154.92	Totals

9.2 PC approved the cash balances held by the Parish Council at 30/11/25 along with corresponding bank reconciliation and bank statements. Documents duly signed.

9.3 The PC reviewed and discussed the draft budget received prior to the meeting, in preparation for finalising at the Jan'25 meeting.

10.0 War Memorial Clock

10.1 Service and regular maintenance funding options: PC reported that none of the four clock faces were now working. Action: PA will contact Smiths of Derby to advise on repair options. Also to request a formal estimated total cost for longer term general repairs, to enable a pre-application to be submitted to the War Memorials Trust Funding - maximum £5k available.

10.2 Donations Appeal for War Memorial Maintenance Costs: KB reported that, during the month of November, a total of £370, was very kindly donated to the fund.

11.0 Highways and Footpaths

11.1 LCC village lamppost numbering record: PA confirmed the record revision was still in progress.

11.2 Missing Reflector Posts on North Road, outside Oak Lodge: LCC confirm that these works are currently under consideration. Action: KB to monitor.

- 11.3 **North Road Bus Stop, Hard Standing Request:** PA reported that he had not had any response from LCC and would continue to pursue. Pending.
- 11.4 **Request received for Brown Tourist signs re MUGA and Bowls Club directions, to be erected on entry to the village:** PC discussed. Action: PA to enquire with LCC re potential costings.
- 11.5 **MVAS – Ongoing Management:** TJW agreed to assume responsibility for future management from KC, going forward. Action - KC to pass all details onto TJW.
- 11.6 **Missing Reflector Posts on Walcote Road:** KB informed the PC that she had reported this to LCC. Action - KB to monitor.
- 11.7 **Ditch Clearance required on Walcote Road, following recent lorry crash:** KB informed the PC that she had reported this to HDC. Action - KB to monitor.
- 12.0 **Grass Cutting and General Outdoor Matters and Maintenance**
 - 12.1 **Refuse bins to be replaced with Lidded Bins as agreed by HDC, Aug'24:** KB reported that HDC continues to hold this on their work schedule but as yet, are unable to confirm a date. Action – KB to monitor.
 - 12.2 **Request for a refuse bin to be placed in the area of the Playing Field:** KC reported that the fixed bin near the bowls club had not yet been removed. Action – KC to contact the contractor to discuss removing the bin from its concrete base and move closer to the MUGA area.
 - 12.3 **Fence posts surrounding the Bowling Green in need of repair as reported by GB previously:** The PC agreed to accept the quote received for £700 to repair the posts. Action - GB to instruct the contractor.
 - 12.4 **Untrimmed hedge, alongside Bowls Green and Village Hall:** PC reported that the hedge had not yet been trimmed. Action – KB to follow up with HDC.
- 13.0 **Children's Play Area**
 - 13.1 **Regular Play Area Safety Inspections:** TW reported that the inner fencing around the swings area required repairs. Action – TW to discuss with contractor whether fencing was required in that area.
 - 13.2 **Risk Assessment for the play area:** This item to be carried forward to next meeting. Pending.
- 14.0 **Playing Field**
 - 14.1 **Playing Field Risk Assessment:** This item to be deferred to the next meeting. Pending.
 - 14.2 **NKFC Licence and Annual Charges:** KC confirmed that he is in communication with NKFC regarding the contract renewal. Pending.
- 15.0 **Proposed MUGA (Multi Use Games Area)**
 - 15.1 **MUGA – Funding for CCTV erection:** KC provided a quote for £3041.60 plus vat and was expecting a second quote from an alternative supplier shortly. The PC agreed for KB to prepare an application to the Leics Police Community Action Fund (CAF), Rural Crime Funding, with the initial quote provided. Action – KB to prepare application.
 - 15.2 **MUGA – Tree Planting:** PA said that he intended to further discuss the proposed small tree planting project with the youth club providers. Pending.
 - 15.3 **PC to receive an update re MUGA overall costings to date:** KB confirmed that there had been no movement on the total costs since last month, and the figure was still standing at £4484.
 - 15.4 **Easement agreement between the PC and the Village Hall regarding the MUGA energy dedicated meter, situated in the VH:** The PC agreed that PA would talk to the VH representative to further discuss. Pending.
- 16.0 **Future Spending Options from the S106 and CIC Funding**
 - 16.1 **Future plans - No update.**
- 17.0 **Village Communication**
 - 17.1 **SKN – Following on from discussion with the SKN editors during the Public Participation session, the PC agreed to include a provision of a £500 contingency figure within the precept request for 2026-2027.**
- 18.0 **Neighbourhood Plan, Monitoring and Review**
 - 18.1 **PA reported that he had now received a first draft for the review and would share with all councillors once he had properly read and considered. Pending.**
- 19.0 **Community Emergency / Resilience Plan**
 - 19.1 **The review of SK's Community Emergency Plan dated June'14:** This item to be carried forward to the next meeting. Pending.
- 20.0 **Village Youth Club (HCYC)**
 - 20.1 **PC agreed to meet informally, with members of the VHC, and representative/s from HCYC, in January, to discuss ideas that may help to increase the youth club attendance levels. Action: PA to arrange meeting.**
- 21.0 **HDC Community Grant, year 2, round 2, 1st Dec'25 to 16th Feb'26, £10k available.**
 - 21.1 **The PC agreed to continue involving parishioners, listening to feedback at local events, Community Café etc, with a view to encouraging and supporting any worthwhile causes that might fit HDC's criteria. Details of this funding opportunity can be found on the village website - southkilworth.co.uk.**
- 22.0 **Items to be Considered for the next Agenda. None**
- 23.0 **To Confirm Date of Next Meeting: 13th Jan'26. Meeting ended at 9.05 pm A copy of these minutes will be published on the South Kilworth Website, no later than thirty days from the date of the meeting.**



Kilworth Springs **PREMIER GOLF CLUB**

Founded in 1993 and overlooking the beautiful Avon Valley in South Leicestershire. Our 18-hole golf course and TrackMan powered driving range are the perfect place to unwind whilst working on your swing.

With a function room available for hire complete with event catering for weddings, special occasions and corporate events. All aspects are open to the public, so whether you are looking for a social game of golf, a drink or bar meal, a premier golfing venue to stage your golf tournament or somewhere to impress for your forthcoming wedding, party, or corporate event – Kilworth Springs Golf Club provides the finest facilities and catering for every occasion.



www.kilworthsprings.co.uk



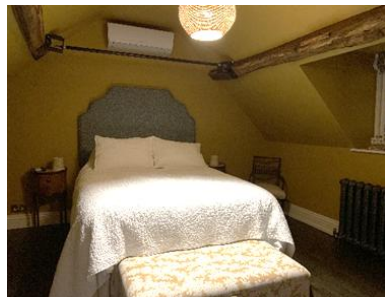
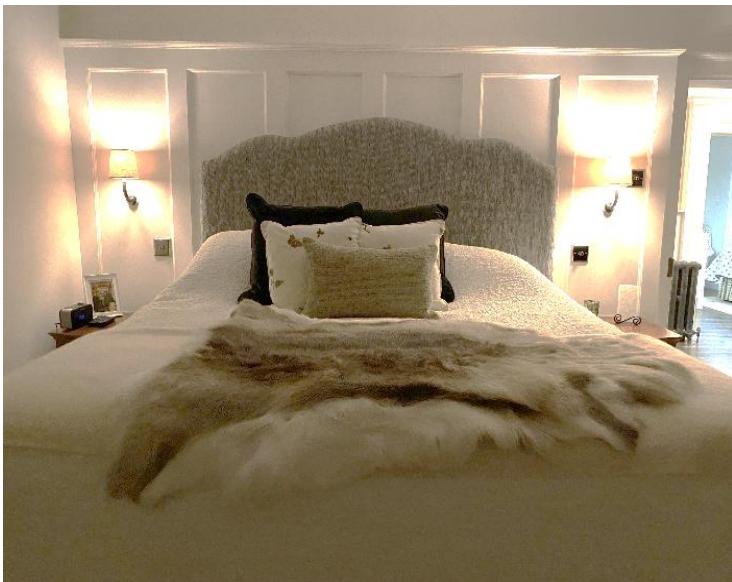
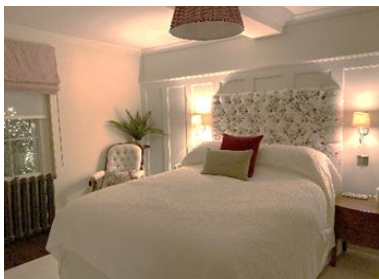
The Old Rectory Revisited

You may recall that in September 2024, we met with Tim Wood, who graciously allowed us into his and his lovely wife, Cerys's, almost-completed and newly renovated home. <https://www.southkilworth.co.uk/news/south-kilworth-news>

We shared their story, including 'before and after' photos of the renovation. At that time, they graciously promised to invite us back to show us their interior changes. And the time has come. With their kind permission, we are happy to share with you the magnificent 'after' photos, with finishing touches. The interior design has been done by the talented and self-taught Cerys Wood. Each

room held so much interest that it was hard to select which photos to include. We could not resist the wonderful Christmas lights in the garden. These too have an interesting story, which you can read about on the village website. <https://www.southkilworth.co.uk/notice-board/happy-christmas> **Toni & Rob Snell**





South Kilworth School News

'Everyone Loves a Baby' What an incredible day we had with our Nativity performances! A huge thank



you to our amazing staff, talented children, and supportive family community for making it such a brilliant success. The hall was filled with festive cheer, proud smiles, and plenty of laughter—because, after all, *everyone loves a BABY!* We'd also like to say a special thank you to



FOSKS for providing delicious refreshments and adding extra

festive fun to the occasion. Your hard work and generosity helped make the event truly memorable.

We also have a final call out for parents wanting to visit the schools before making their school applications. The deadline for applications is 15th January 2026.

Further information is on the South Kilworth School website.

Georgie Willock



Christmas Community Café

A wonderful day was spent at the community café, which was held in the Village Hall on 9 December 2025.

Children from South Kilworth school sang carols, there were Christmas tables with locals selling lovely items, and of course, Father Christmas! Everyone enjoyed delicious homemade treats and great company.

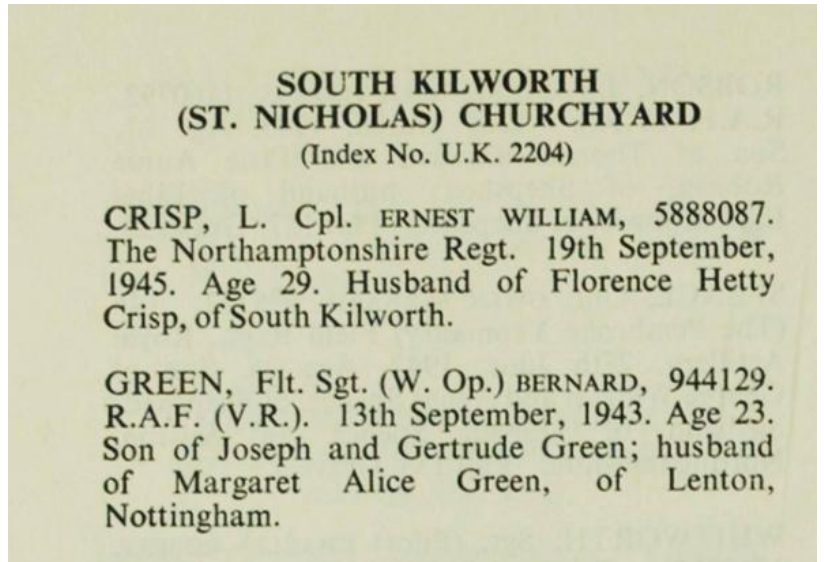


South Kilworth's Fallen: The Lives Behind the Headstones

This article began with a thoughtful email from locals, Alec and Steph Wilson, who let us know that two Commonwealth War Graves lie in the churchyard at St Nicholas. As they wrote, "We felt it was only right to learn more about the men who made the ultimate sacrifice during the Second World War. We thought readers might also be interested in what our research has uncovered."

Alec's interest in the Second World War is well-rooted. He is Chairman of The Friends of the Tenth, an organisation dedicated to the 10th Battalion, The Parachute Regiment, which fought at Arnhem in 1944 — the battle depicted in A Bridge Too Far. <https://friendsofthetenth.co.uk/>

Thanks to Alec and Steph's research, and the memories shared by long-standing villagers, we can tell the stories behind the two men laid to rest in St Nicholas' graveyard.



Lance Corporal Ernest William Crisp

(Promoted to full Corporal at the time of his death)

Ernest William Crisp was born on 19 March 1916 in Lilbourne, West Northamptonshire, the youngest of four children of John William and Martha Crisp (née Lane), both originally from Swinford.

Tragedy struck early: Ernest's mother died young, and by 1921, Ernest and his older brother Edwin were living in Kimcote & Walton with relatives on their paternal grandmother's side, William and Annie Cox. By 1939, Ernest was working as a Farmer's Assistant and living at 6 Kilworth Road, Swinford.

A South Kilworth Connection

In 1940, Ernest married Florence Hetty Bonsor, born in South Kilworth in 1918. Florence came from a long-established village family. Her great-grandfather, Henry Bonsor (born c.1837), was a master brickmaker living in South Kilworth.

Service in the Second World War

Ernest joined the 5th Battalion, The Northamptonshire Regiment, though the exact date is unknown. By 1941, records show he was already a Lance Corporal (Service No. 5888087). The 5th Battalion (Huntingdonshire) was a Territorial unit attached to the 48th (South Midland) Infantry Division at the outbreak of war.

His medal card records the 1939–45 Star, Africa Star (with 1st Army clasp, indicating participation in Operation Torch), and the War Medal.



The battalion left the UK on 16 October 1942, landing in Algeria on 9 November as part of Operation Torch. They fought in several major actions: Tebourba Gap (1–10 December 1942); Oued Zarga (7–15 April 1943); Medjez Plain (23–30 April 1943); Final battle for Tunis (5–12 May 1943)

Ernest was wounded on 7 April 1943 during the Tunisia campaign and was taken Prisoner of War on 15 April. Initially listed as missing, he was later confirmed to be held in Italy before being transferred to Germany. He was imprisoned in Stalag 11B (Fallingbomel)



and Stalag 11A/341 (Altengrabow). By January 1945, Stalag 11A held more than 60,000 POWs of many nationalities.

Ernest was repatriated on 12 February 1945, very early in the liberation process — a sign, Alec notes, that he was likely in poor physical condition. He died on 19 September 1945, aged just 29. Without his full-service records, the cause is unknown, though it was likely related to his wounds or time as a POW.

A Family Still Here

We wondered whether any relatives remained in the village. Long-time resident Gerry Byrne confirmed that Ernest's daughter, Patricia Elizabeth Swinfen, still lives on Welford Road — just a few doors from where she grew up!



Pat, born in 1941, is currently the oldest female village-born resident still living in South Kilworth. She recalls visiting her father in Rugby's Hospital of St Cross, though she was too young to understand the seriousness of his illness. She was only four when he died.

Pat's mother, Florence, later remarried and passed away in 1993. Sadly, Pat has never seen a photograph of her father. Despite extensive searching, none has yet been found — though perhaps a descendant of Ernest's siblings may hold one.

Pat has deep ties to the village. She fondly remembers donkey rides around the old rectory during the village fete and was one of the volunteers who typed up the South Kilworth News in the 1970s under its founder, Rev. Jager. Pat and her husband Colin have a daughter and two grown grandchildren.



We set out to uncover Ernest's history — and found his legacy still living happily among us. Thank you, Corporal Crisp, for your sacrifice.

Flight Sergeant Bernard Green

Flight Sergeant Bernard Green was born in 1920 in Ratby, Leicester, to Joseph and Gertrude Green (née Whitby). He had an older sister, Marjorie. By 1921, the family lived on Main Street, Market Bosworth, where his father worked as a horseman and groom.

The family later moved to Welford, where Bernard attended school before progressing to Lutterworth Grammar School.

A talented sportsman, Bernard was described as "a popular playing member of the Welford Football and Cricket Clubs, and was employed at B.T.H., Rugby." (Market Harborough Advertiser and Midland Mail, 24 September 1943). BTH had a major role in developing Frank Whittle's jet engine in 1937.

The family eventually moved to Downton Farm, historically linked with South Kilworth but now within Welford parish. Pat Swinfen remembers Bernard as "living down by the canal".

In July 1942, Bernard married Margaret Alice Meakin at St Nicholas Church, South Kilworth.

Service with the RAFVR

Bernard joined the RAF Volunteer Reserve around 1940. Reports note that "He has taken part in most of the big bombing raids over Germany, and had many thrilling experiences and escapes."

He served as a Wireless Operator/Navigator (Service No. 944129) with Bomber Command, later posted to No. 12 Operational Training Unit, part of 91 Group, for Wellington bomber conversion training. The unit was based at Chipping Warden airfield in Northamptonshire.



The Liberation of Stalag 11b, April 1945. Photo taken by Sgt Smith

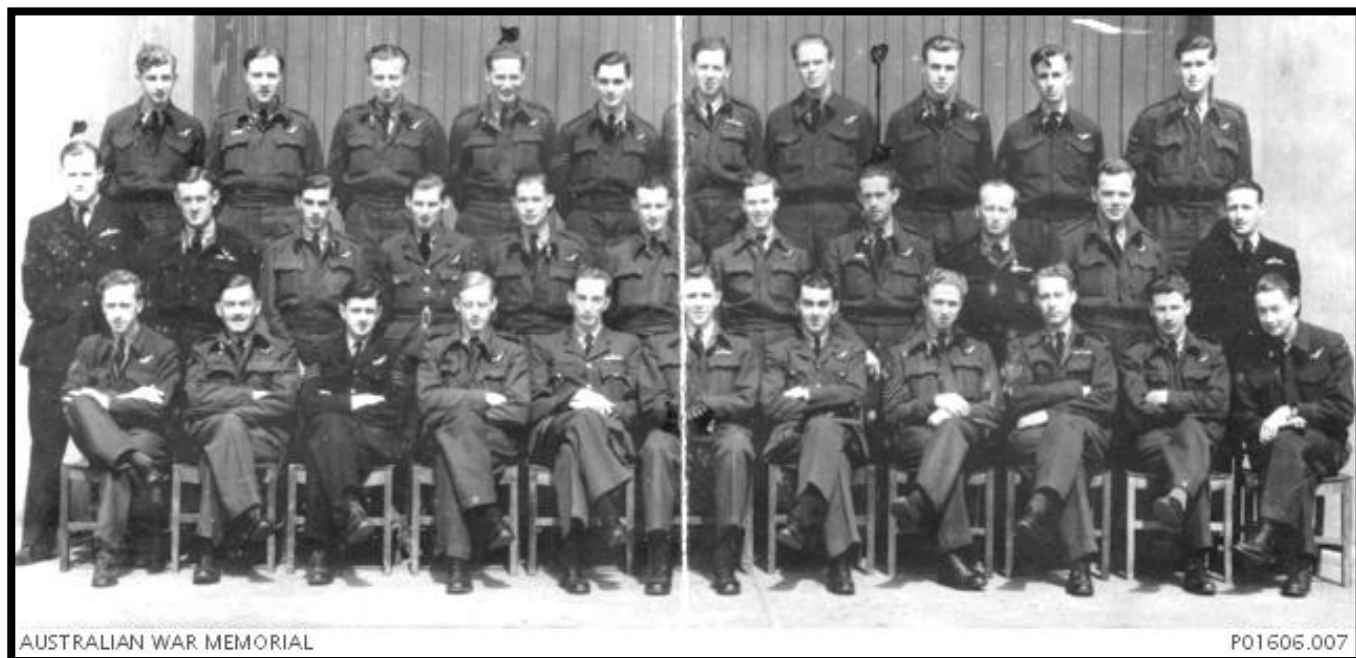


The Final Flight

On 13 September 1943, Bernard was part of the crew of Vickers Wellington III Bomber BJ664, which took off from Chipping Warden for navigation and map-reading exercises over North Wales.

The aircraft encountered a severe thunderstorm, lost control, and crashed into an Iron Age hillfort near Church Stretton, north of Ludlow. All eight crew members were killed instantly.

Those lost were: Flt/Lt J. E. Fairchild, Sgt C. S. Walters, Flt/Lt R. T. Bowen, Sgt E. Gates, Sgt E. A. Opie RCAF, F/S B. Green, Sgt E. Davis, Sgt T. Johnson. In the photo below of the No. 12 Operational Training Unit, archived in the Australian War Memorial, only the Australians are named. This photo was taken in July 1943, two months before F/F Green died, so it is highly likely that he is in it.



A Village Farewell

Bernard's funeral was held at St Nicholas in South Kilworth. The Market Harborough Advertiser and Midland Mail recorded that his coffin was draped with the Union Jack, with pallbearers including two of his closest squadron friends, Flight Sergeants J. Innes and A. Flack. Officers and NCOs representing British, Australian, New Zealand and Canadian airmen also attended. Among the mourners were Mr and Mrs J. Morris of South Kilworth, founders of Joseph Morris Butchers. A sad end. Thank you, Flight Sergeant Green, for your sacrifice.

This article has been a truly collaborative piece, and we are grateful for all the support and shared memories. We have written to the National Archives in the hope of locating Ernest Crisp's photograph. We are also continuing to research Flight Sergeant Green and would welcome any further information from readers.

Alec and Steph Wilson, Toni and Rob Snell





WATERFIELD
HERITAGE
GARDENS

Horticultural Design
Soft Landscaping
Lawn and Hedge Care
Specialist Topiary
Consultation and Advice

077 940 91719
waterfieldheritagegardens@gmail.com
@waterfield_heritage_gardens



Care *starts* at home

From warm and friendly companionship to specialised, practical care that puts your loved one's needs and preferences first, we're changing the way people think about home care.

Main office

01455 247 100

info@homeinstead.co.uk

www.homeinstead.co.uk/rugby





LANDSCAPE & PROPERTY SERVICES

Over 15 years of approved, professional,
high quality work.

A wide range of hard/soft landscaping
& construction:

- All Types of Fencing & Repairs
- Bespoke Sleeper Work
- Driveway Installation & Maintenance
- Patio Installation & Maintenance
- All Types of Bespoke Decking
- Timber Builds: Cabin, Shed, Stable, Pergola, Gazebo, Car Port & Garage
- Drainage, Ponds & Water Features
- Ground Work, Foundations & Concrete Works
- All Types of Building Work
- Garden Maintenance & Clearance
- Tree & Hedge Pruning
- Turfing & Lawn Care
- House Renovations, Repairs & Maintenance

See website for full details.

Please contact Thomas for a free no
obligation quote:

PHONE | 07525064220

WEB | www.twlandpservices.com

EMAIL | twlandpservices@outlook.com

