

**BF15S Series**  
**Surface Mounted, Push Button Operated Bottle Filler**



**springH2O**<sup>®</sup>  
BOTTLE FILLERS BY MURDOCK<sup>®</sup>

Please visit [www.murdockmfg.com](http://www.murdockmfg.com)  
for most current specifications.

**BF15S Series**  
Push Button Operation

**TECHNICAL ASSISTANCE TOLL FREE TELEPHONE NUMBER:**  
**1.800.743.8259**

Technical Assistance E-Mail: [Fieldservice@acorneng.com](mailto:Fieldservice@acorneng.com)

Please refer to the Link or QR code provided.  
For Cleaning & Care Guide:  
**CLEANING & CARE**



**NOTES TO INSTALLER:**

1. Please leave this documentation with the owner of the fixture when finished.
2. Please read this entire booklet before beginning the installation.
3. Check your installation for compliance with plumbing, electrical and other applicable codes.

For current Warranty click hyperlink [Product Warranty](#) or visit: [www.murdockmfg.com/terms-and-warranty](http://www.murdockmfg.com/terms-and-warranty)

Murdock™ assumes no responsibility for use of void or superseded data. © Copyright Murdock Mfg., City of Industry, CA. Member of Morris Group International. Please visit [www.murdockmfg.com](http://www.murdockmfg.com) for most current specifications.

COMPLIES WITH  
**STANDARDS**



NSF/ANSI 61



Federal  
Public Law  
111-380  
(No Lead)



Member of  
  
MORRIS GROUP  
INTERNATIONAL

**murdock**<sup>®</sup>  
SINCE 1853

15125 Proctor Ave, City of Industry,  
CA, 91746 U.S.A.  
Phone 800-591-9360  
626-336-4561  
[www.murdockmfg.com](http://www.murdockmfg.com)

## **PRIOR TO INSTALLATION**

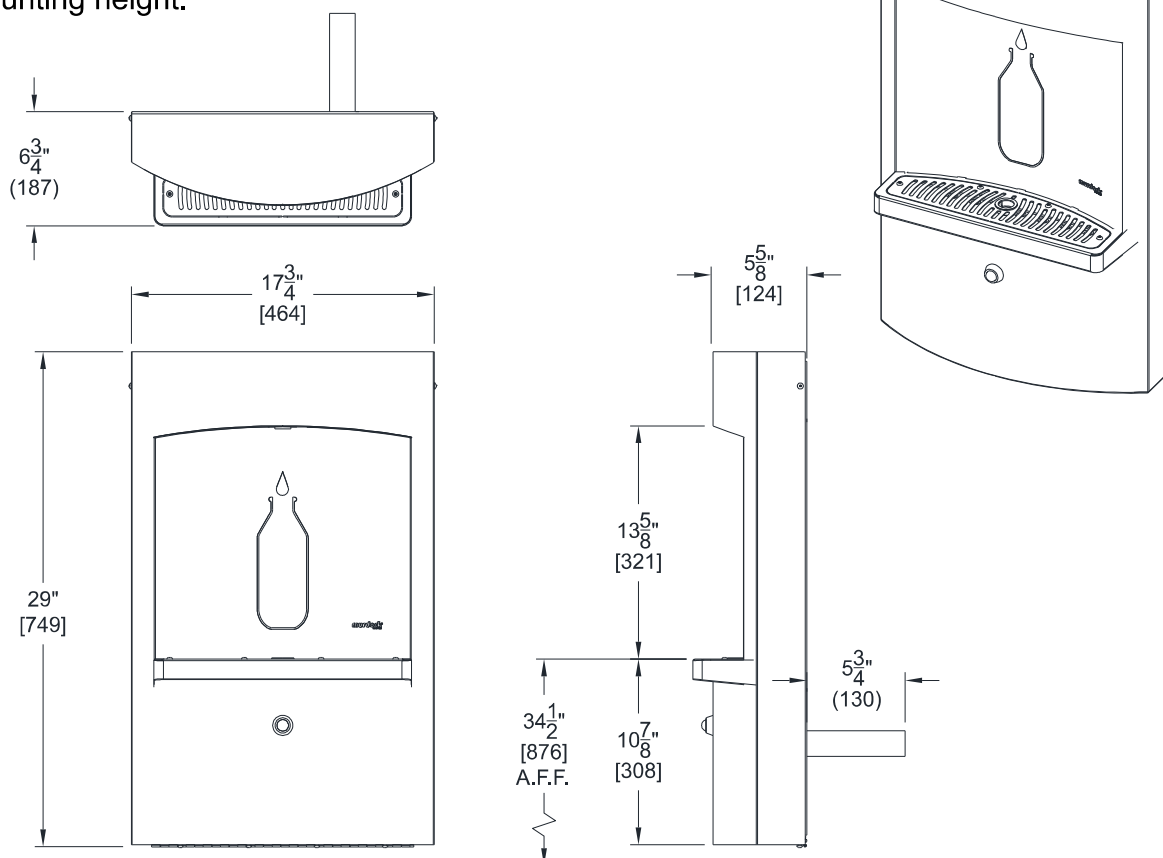
Important: Some options may slightly alter installation. To ensure proper installation, review the manual thoroughly and verify rough-ins before beginning any work. File this Manual with the owner or maintenance personnel upon completion of installation.

- Fixture mounting requirements: Industry standard wall construction, adequate to support the fixture and (installer provided) wall anchors sufficient to secure the fixture.
- Fixture operates within water pressure range of 20 to 105 PSIG. Murdock will not warranty fixtures damaged when connected to supply lines with flow pressure lower than 20 PSIG or higher than 105 PSIG.
- Per UPC 609.10- *All building water supply systems in which quick acting valves are installed shall be provided with devices to absorb the hammer caused by high pressure resulting from the quick closing of the valve. These pressure-absorbing devices shall be approved mechanical devices. Water pressure-absorbing devices will be installed as close as possible to the quick closing valve.*
- Water supply inlet is 3/8" O.D. Copper Tube.
- Completely flush supply of all foreign debris before connecting to fixture. Bottle Filler is designed to provide trouble-free drinking water unaffected by fixture connection tubing and fittings and not cause problems with taste, odor, color or sediment.
- Electrical Receptacle(s) must be wired to a GFCI protected circuit. Fixture must be earth grounded per N.E.C. (National Electrical Code).

## **DIMENSIONAL DRAWING**

### **BF15S Surface Mounted Bottle Filler**

Prior to roughing in, consult with local, state, and federal codes for proper mounting height.



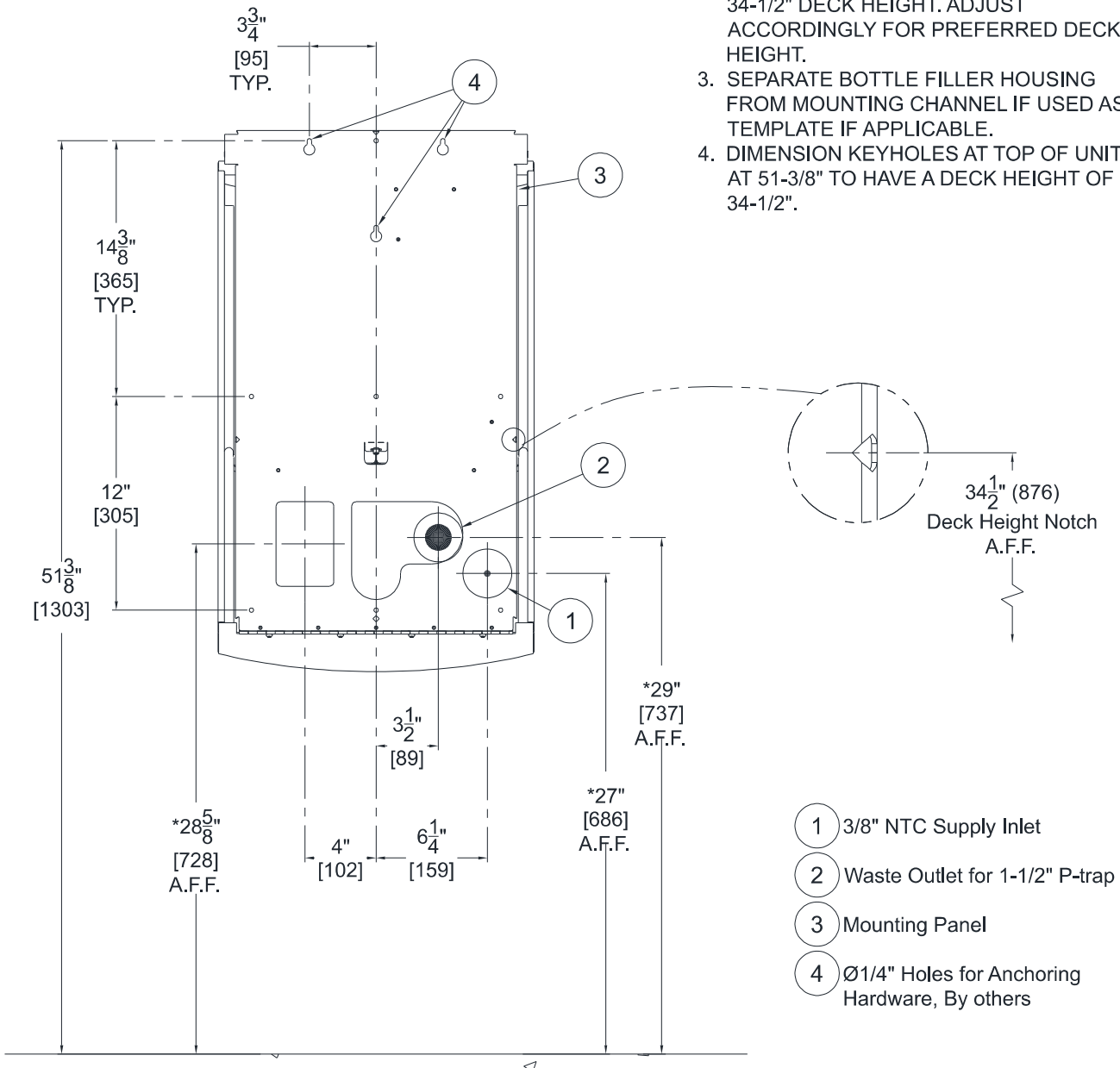
ALL DIMENSIONS ARE IN INCHES (MM)

## INSTALLATION INSTRUCTIONS ROUGH-IN:

- 1 Provide wall openings as indicated in rough-in detail provided, ensuring to block out the Waste connection for 1-1/2" Waste Outlet. Use Mounting Channel as template.

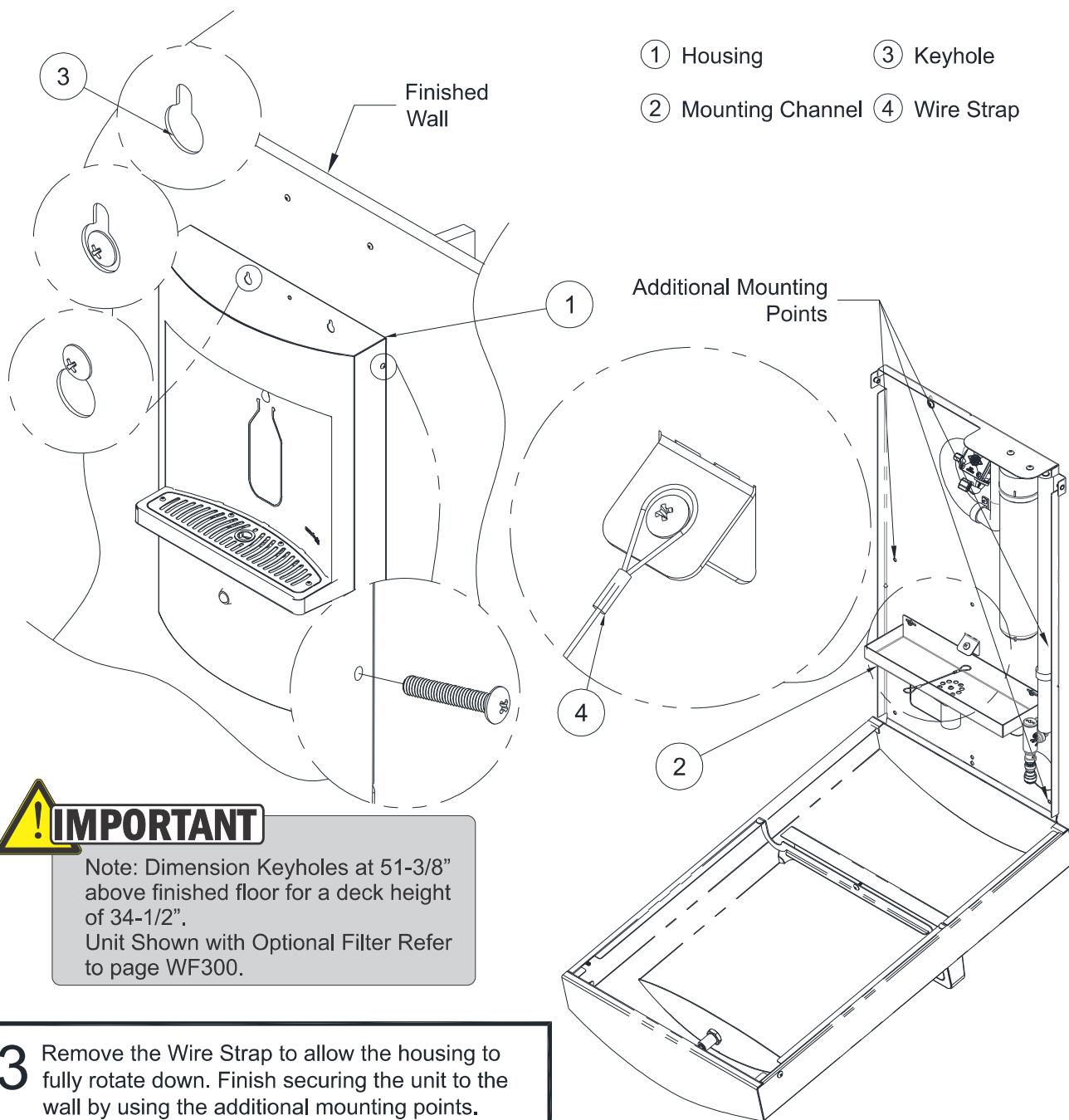
### GENERAL NOTES:

1. ALL DIMENSIONS ARE IN INCHES (mm)
2. DIMENSIONS INDICATED WITH (\*) IS FOR 34-1/2" DECK HEIGHT. ADJUST ACCORDINGLY FOR PREFERRED DECK HEIGHT.
3. SEPARATE BOTTLE FILLER HOUSING FROM MOUNTING CHANNEL IF USED AS TEMPLATE IF APPLICABLE.
4. DIMENSION KEYHOLES AT TOP OF UNIT AT 51-3/8" TO HAVE A DECK HEIGHT OF 34-1/2".



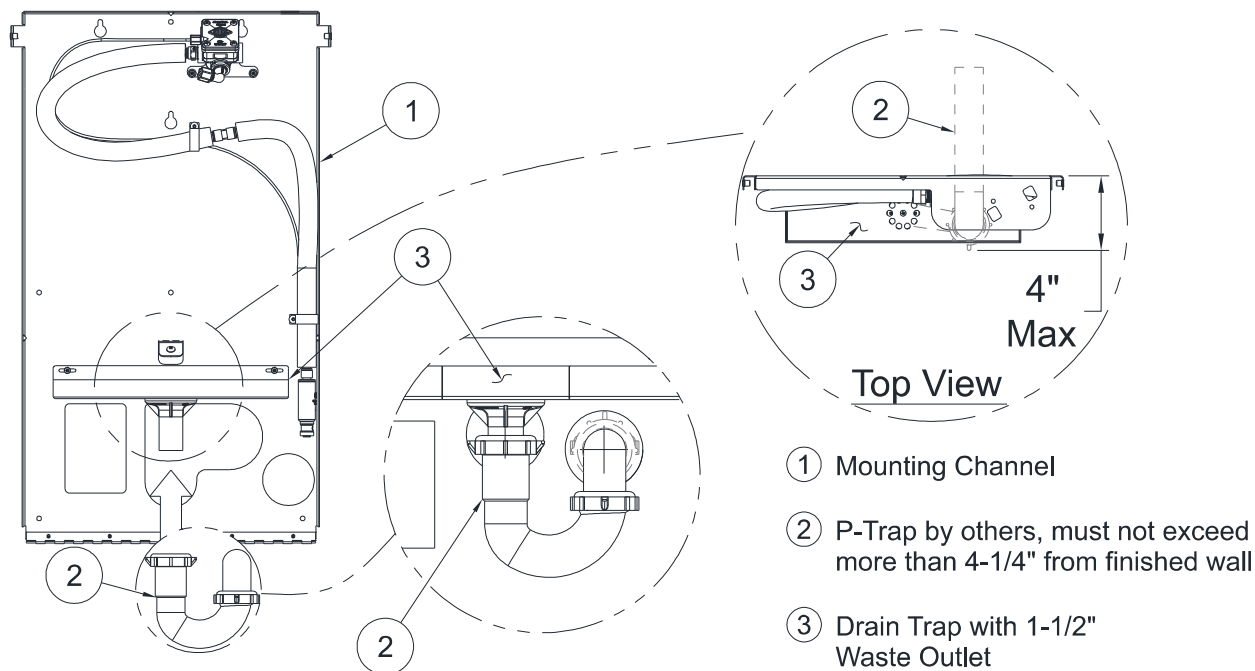
**INSTALLATION INSTRUCTIONS:**

**2** Hang the unit from the two keyholes located at the top of the mounting channel and remove the two screws located near the top of the housing.



**INSTALLATION INSTRUCTIONS CONTINUED:**

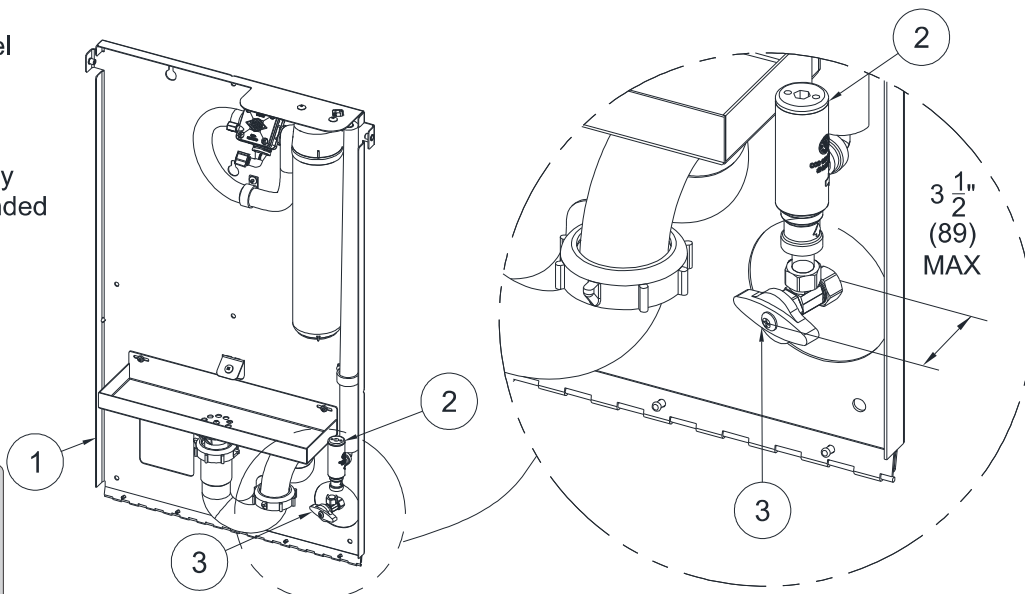
- 4** With the Mounting Channel secured to finished wall, install 1-1/2" P-Trap Waste Outlet.



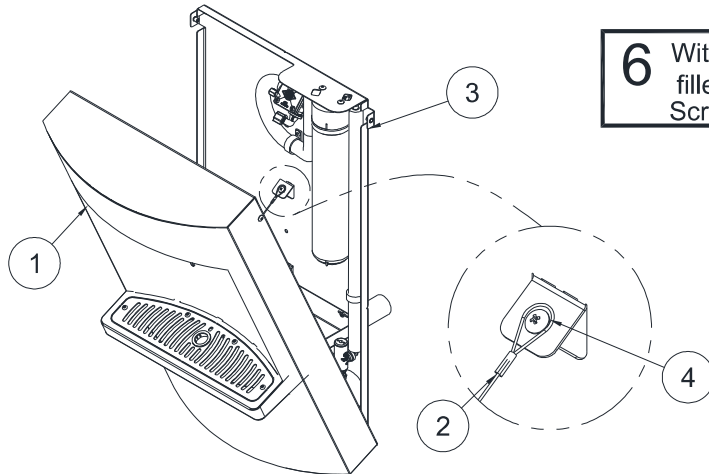
- 5** Connect 1/4" O.D. x 1/2" "Y" Strainer assembly to main water supply. Recommend using angle stop for easy maintenance. Angle stop must not extend more than 3-1/2" from finished wall.

- 1 Mounting Channel
- 2 "Y" Strainer
- 3 1/2" Angle Stop by others recommended

**IMPORTANT**  
Shown with optional Water Filter. Refer to page 7 for Filter Installation.



**INSTALLATION INSTRUCTIONS CONTINUED:**

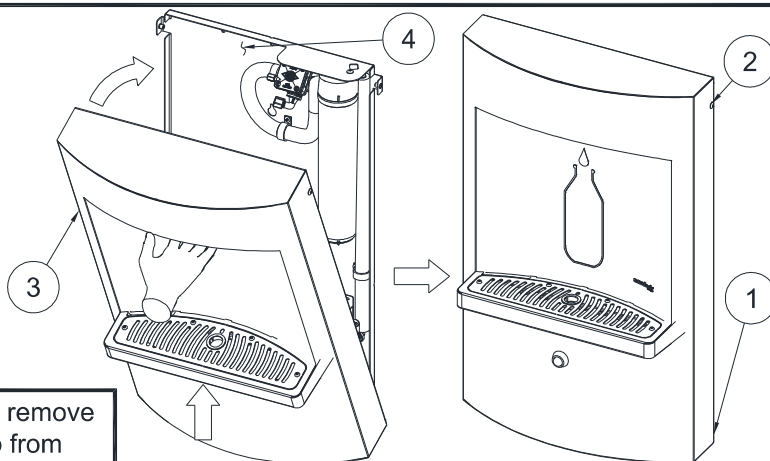


**6** With fixture tested, hook Wire Strap from Bottle filler Housing to Mounting Panel and tighten Screw.

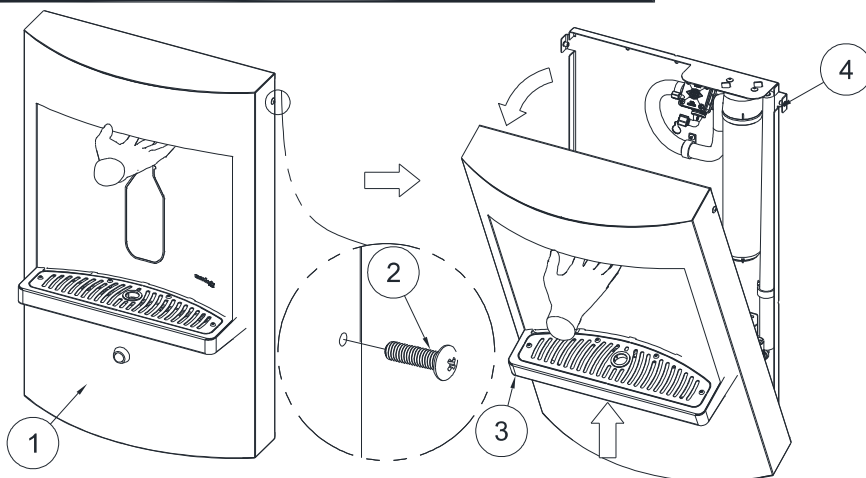
- ① Bottle Filler Housing
- ② Wire Strap
- ③ Mounting Channel
- ④ Wire Trap Mounting Screw

**7** Lift up from Fill Spout area to close the unit by swinging Bottle Filler Housing up and secure with Screws from step 1. Do not force closed. Address any interference if necessary. Do not over-tighten.

- ① Bottle Filler Assembly
- ② #10-32 x 1/2" Long Philips Head Screw
- ③ Bottle Filler Housing
- ④ Mounting Channel



**8** To open unit for maintenance purposes, remove Top Screws. Lift Bottle Filler Housing up from Fill Spout area then pull away from wall.



- ① Bottle Filler Assembly
- ② #10-32 x 1/2" Long Philips Head Screw
- ③ Bottle Filler Housing
- ④ Mounting Channel

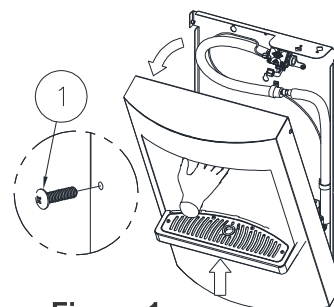
**OPTIONAL WF3000 INSTALLATION:**

**WF3000 - Important - Before Starting**

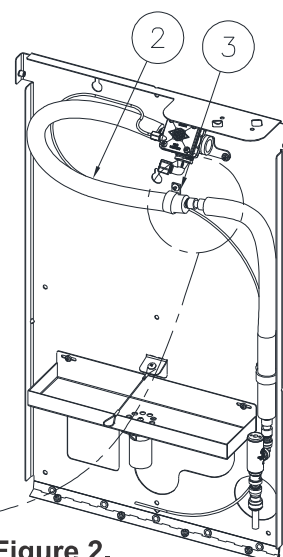
- Turn water service off before attempting installation.
- Refer to Push-in Fittings installation for information on connecting, disconnecting and testing Push-In Fittings.
- Test fittings and restore water service prior to encasing with insulation tubing.
- NOTE: Fittings and 1/4" OD Tubing shown for clarity however insulation tubing may conceal fittings.
- NOTE: Mounting the Filter on the right side of the frame, the "OUT" port or outlet side of the filter should always be facing the center of the frame assembly.

**INSTALLATION INSTRUCTIONS:**

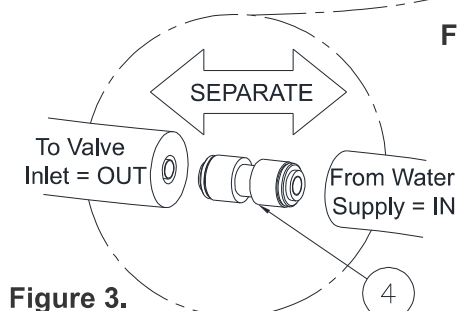
- 1. Access Filter Compartment:** Remove screws [1] at the top of the bottle filler to free the face from the Housing Back Plate Assembly and lower to fully open position. **Figure 1.**
- 2. Prep Water Supply Riser:** Remove supply riser tubing [2] from center Fixing loop [3] (**Figure 2.**) . Disconnect 1/4" O.D. tubing connector [4] as show in **Figure 3.**
- 3. Install Filter In-Line:** Using Push-in elbows [5] dry fit 1/4" O.D. tubing to Filter Cap [6] to the "IN" port of the Filter (Water Supply Side) and to the "OUT" port to the control valve inlet [7]. If needed, cut 1/4" tubing as required for proper fit. **Figure 3 & Figure 4.**
- 4. Mount Filter Assembly:** Route Supply Tubing [8] through center Fixing Loop [3]. Mount the Filter [9] to the upper back plate as shown. **Figure 5 & Figure 6.**



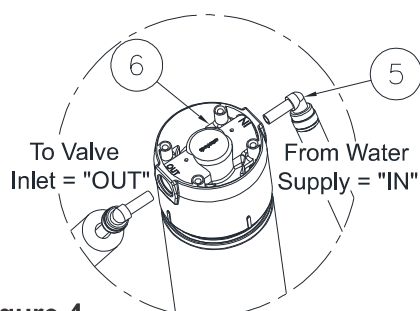
**Figure 1.**



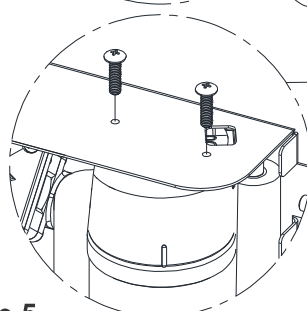
**Figure 2.**



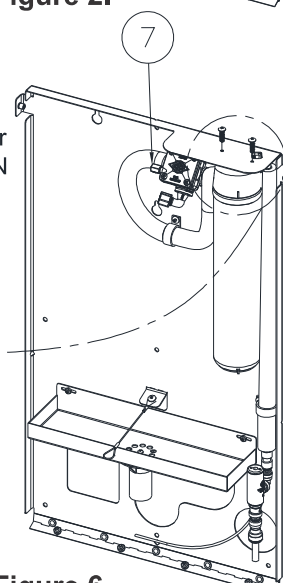
**Figure 3.**



**Figure 4.**



**Figure 5.**



**Figure 6.**

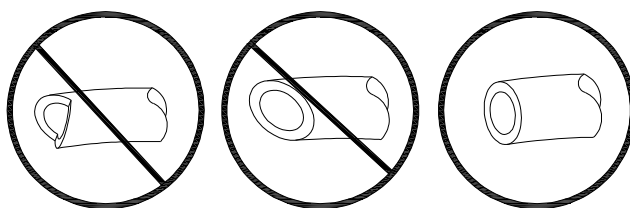


## **PUSH-IN FITTING INSTALLATION**

NOTE: FITTINGS AND TUBE SHOULD BE KEPT CLEAN, BAGGED AND UNDAMAGED PRIOR TO INSTALLATION.

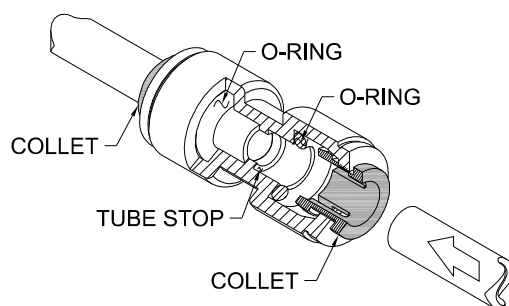
### **TO CUT TUBE:**

Cut to fit length of 1/4" PE Tubing and remove any burrs or sharp edges. Ensure that the outside diameter is free from score marks. Tube ends should be square.

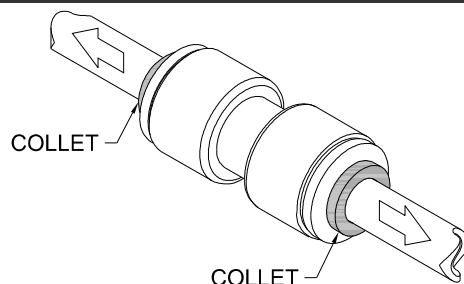


### **INSERTING THE TUBE:**

1. Firmly and fully insert the Tubing end into the Push-In Fitting up to the Tube Stop located approximately 1/2" deep.

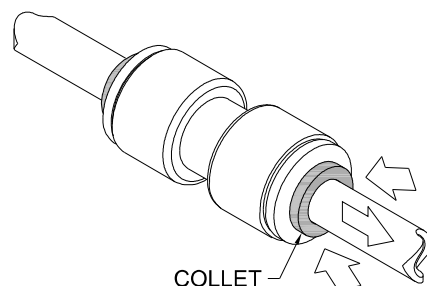


2. Pull on the fitted Tubing to ensure it is secure. Tube should not come free from the Fitting. Water test the connection assembly prior to leaving the site to ensure there are no leaks.



### **DISCONNECTING THE TUBE:**

Prior to disconnecting the Tube from the Fitting, ensure that the water line is depressurized. Push Collet Square towards the Push-In Fitting Body and hold. While holding the Collet in, pull on the PE Tubing to remove from the Push-In Fitting.





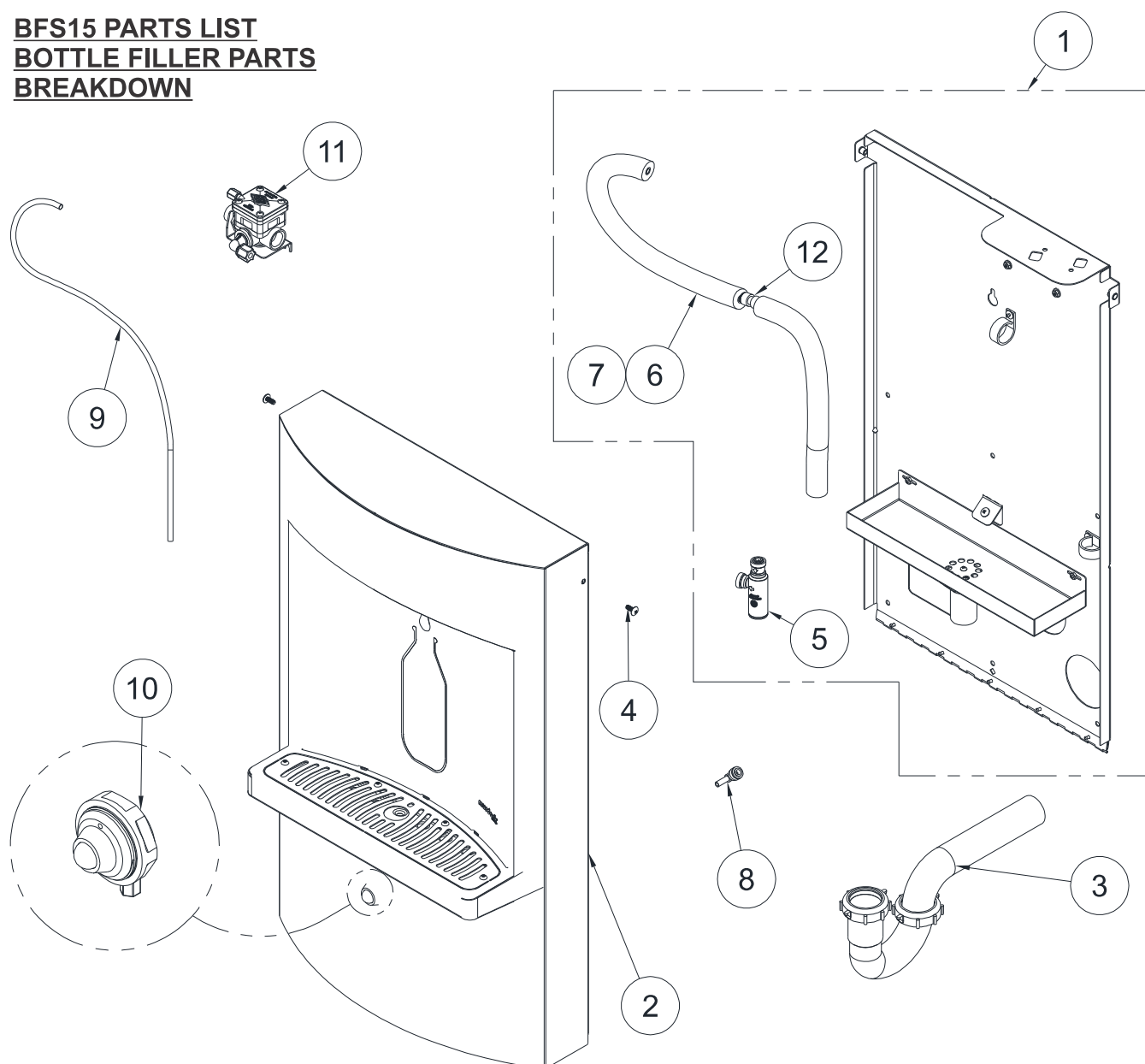
## Surface Mounted Bottle Fillers

### INSTALLATION/MAINTENANCE INSTRUCTIONS

## BFS15 PARTS LIST

### BOTTLE FILLER PARTS

### BREAKDOWN



ITEM #	PART NUMBER	DESCRIPTION	ITEM #	PART NUMBER	DESCRIPTION
1	CALL MFG	WALL MOUNTED FRAME ASSY., BF15S	7	7012-055-000	FOAM PIPE INSULATION
2	CALL MFG	HOUSING ASSEMBLY, BF15S	8	1895-709-000	ELBOW, 1/4" PUSH-IN 1/4" STEM
3	4970-265-000	P-TRAP	9	2150-000-000	1/8" O.D. LLDPE TUBING
4	0116-114-000	#10-32 x 1" SS PHIL RD HD SCREW	10	2566-160-001	(-PBH) S/T SIDE OUTLET PUSHBUTTON
5	7003-096-001	"Y" STRAINER	11	7014-486-001	NON-METERING AIR-TROL VALVE ASSY
6	2169-000-000	1/4" O.D. LLDPE TUBING, BLUE	12	1895-121-000	1/4" OD TUBE UNION PUSH-IN