

**Outdoor Bottle Filler
Pedestal Mounted Sensor/Pushbutton Activation**



M-OBF5-SLPT



M-OBF4-PF

IMPORTANT: INSTALLATION AND SITE PREP FOR FREEZE RESISTANT OPTIONS “-FRU, -NP” WILL DIFFER FROM STANDARD! REFER TO DESIGNATED FREEZE RESISTANT INSTALLATION DETAILS PRIOR TO ROUGH-IN AND FIXTURE INSTALL FOR -FRU AND -NP SERIES OPTIONS. FOR ADDITIONAL INFORMATION VISIT: www.MurdockMfg.com/Resources OR CONTACT YOUR LOCAL SALES REPRESENTATIVE.

NOTES TO INSTALLER:

1. Please leave this documentation with the owner of the fixture when finished.
2. Please read this entire booklet before beginning the installation.
3. Check your installation for compliance with plumbing, electrical and other applicable codes.

TECHNICAL ASSISTANCE TOLL FREE TELEPHONE NUMBER:

1.800.591.9360

Technical Assistance Fax: 1.626.855.4894

For current Warranty click hyperlink [Product Warranty](http://www.murdockmfg.com/terms-and-warranty) or visit: www.murdockmfg.com/terms-and-warranty

Murdock® assumes no responsibility for use of void or superseded data. © Copyright Murdock Mfg., City of Industry, CA Member of Morris Group International. Please visit www.murdockmfg.com for most current specifications.

**COMPLIES WITH
STANDARDS**



Federal
Public Law
111-380
(No Lead)



NSF/ANSI/CAN 61

murdock[®]
SINCE 1853

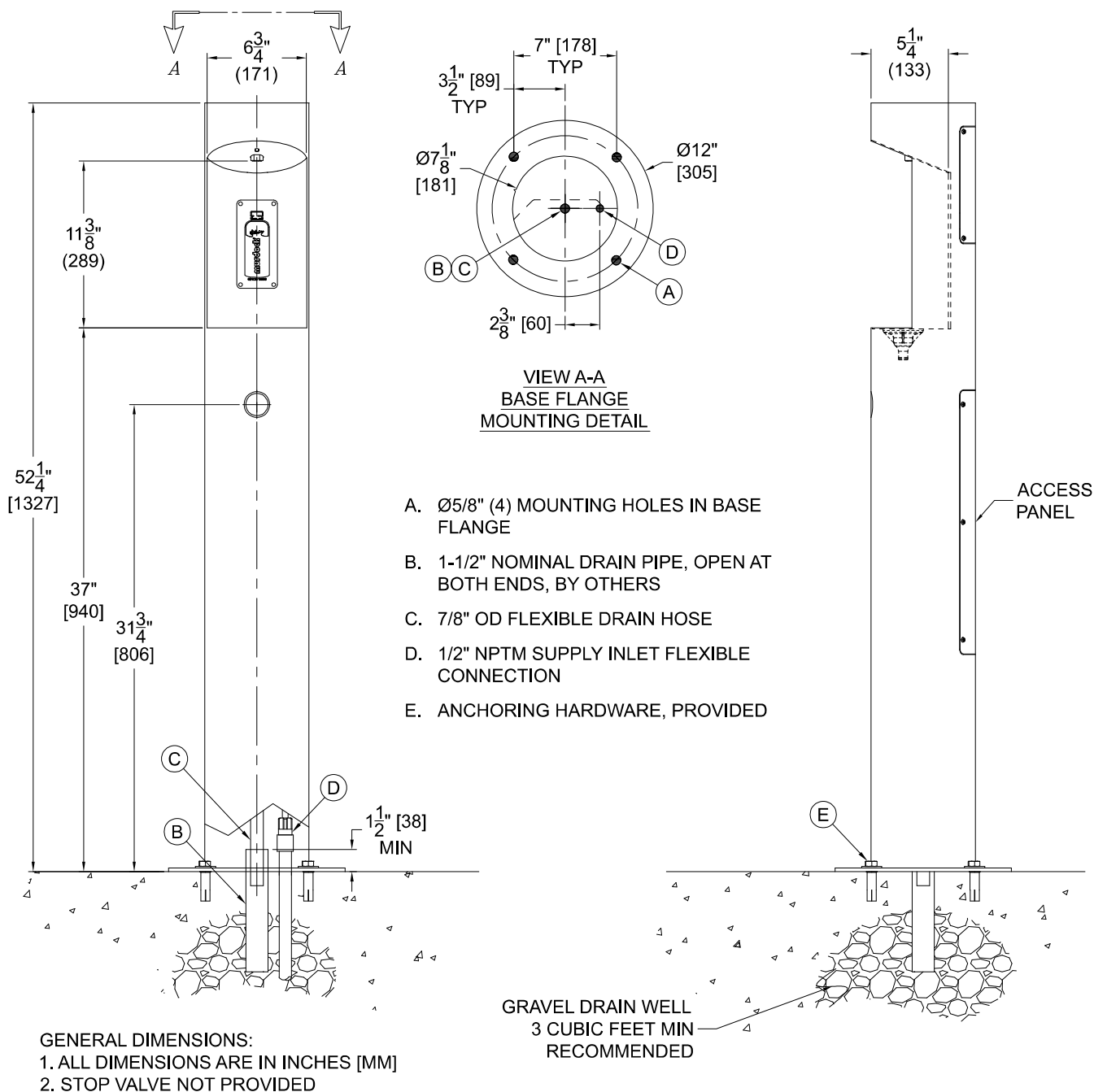
Member of
MORRIS GROUP
INTERNATIONAL

15125 Proctor Ave, City of Industry,
CA, 91746 U.S.A.
Phone 800-453-7465

www.murdockmfg.com

ROUGHING-IN AND DIMENSIONAL DRAWING

Prior to roughing-in consult with local, state, and federal codes for proper installation.



PRIOR TO INSTALLATION:

1. Read all installation instructions carefully, before proceeding.
2. Carefully remove fixture from packaging, preventing scratching or damage.
3. Unit is provided with a six pack battery holder. **NOTE: (6) AA Alkaline Batteries NOT INCLUDED.**
4. Provide mounting surface, sufficient to support the fixture and loads on the fixture. Provide 30" square x 6" deep minimum concrete slab, provided by others to securely anchor fixture.
5. Provide rough-ins as shown on the roughing-in and dimensional drawing, including Water Supply, Drain Pipe and Gravel Drain Well. (See page 2 for rough-in details)
6. Completely flush water supply lines of all foreign debris, before connecting to the fixture.

INSTALLATION: (see drainage & mounting roughing-in pg2)

1. Locate the unit over rough-ins on the Mounting Pad, mark mounting holes in base flange.
2. Tilt the unit down on its side, next to the mounting location. Install 1/2"-13 Drop-In Anchors. Optional -IAP (In-Ground Anchor Plate) which is cast into the concrete, is available.
3. Feed the 7/8" OD Flexible Drain Tube into the open ended Drain Tube. Connect the 1/2" Male NPT Fitting to a potable water supply. Then tilt the unit into place, making sure that the Tubing is not pinched or kinked. Secure the Base Flange to the Mounting Pad with provided hardware.
4. Connect the Battery Pack to matching Battery Wire Terminals. When connected the unit is active.
5. Test for leaks and proper operation, and then install the Access Panel.

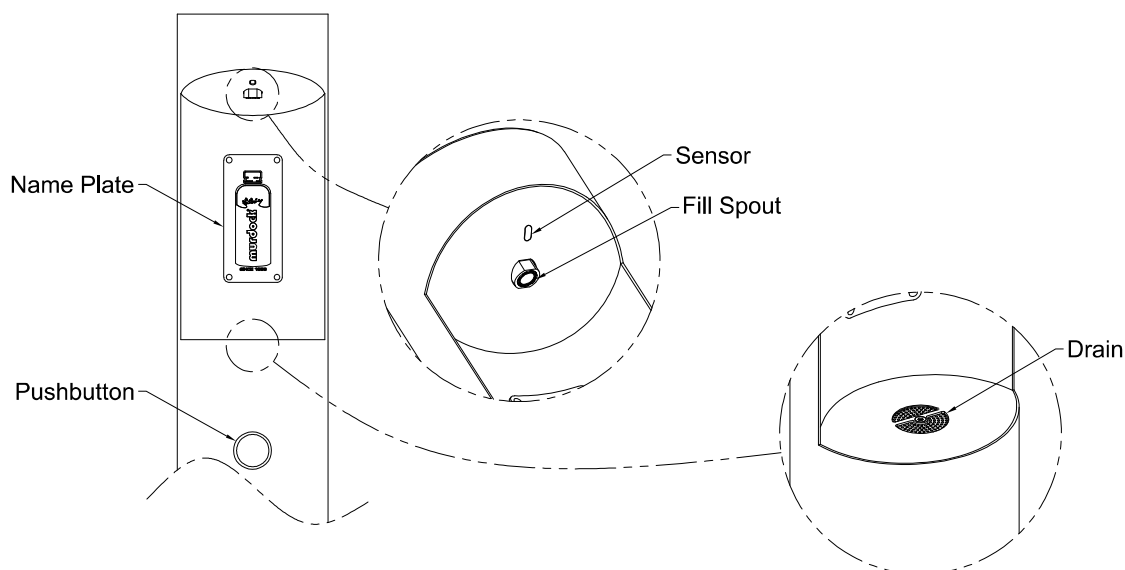
START UP:

Air within the Bottle Filler System or the structure supply piping will cause an irregular spout outlet stream until purged out by incoming water. Press and hold Pushbutton until steady water stream is achieved.

OPERATION INSTRUCTIONS:

Hand operation: Hold container to be filled just below the Filler Tube in the center of the unit, then push Pushbutton. When the container is almost filled, release the Pushbutton.

Sensor Operation: Hold container to be filled just below the Sensor in the center of the Filler Spout and then move the container upward and water flow will start automatically. When the container is almost filled, lower the container below the Sensor until the water stops flowing (see label on the Bottle Filler).

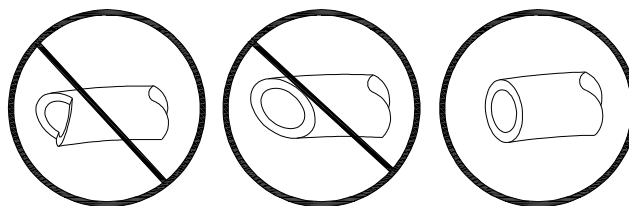


PUSH-IN FITTING INSTALLATION

NOTE: FITTINGS AND TUBE SHOULD BE KEPT CLEAN, BAGGED AND UNDAMAGED PRIOR TO INSTALLATION.

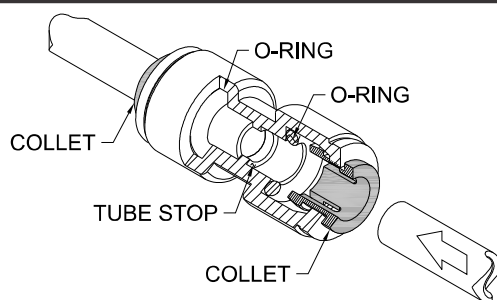
TO CUT TUBE:

Cut to fit length of 1/4" Polyethylene (PE) Tubing and remove any burrs or sharp edges. Ensure that the outside diameter is free from score marks. Tube ends should be square.

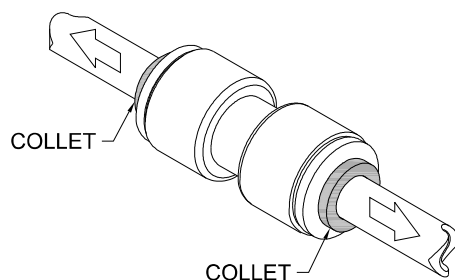


INSERTING THE TUBE:

1. Firmly and fully insert the Tubing End into the Push-In Fitting up to the Tube Stop located approximately 1/2" deep.

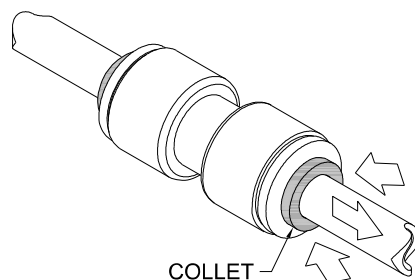


2. Pull on the fitted Tubing to ensure it is secure. Tube should not come free from the Fitting. Water test the connection assembly prior to leaving the site to ensure there are no leaks.



DISCONNECTING THE TUBE:

Before disconnecting the Tube from the Fitting, ensure that the water line is depressurized. Push Collet square towards the Push-In Fitting Body and hold. While holding the Collet in, pull on the PE Tubing to remove from the Push-In Fitting.



TROUBLE SHOOTING:

1. RESTRICTED OR NO WATER FLOW:

- a. Ensure Water Supply service stop valve is fully open.
- b. Verify minimum 20 PSIG supply line flow pressure.
- c. Check for twist or kinks in spout tubing.
- d. Check the water inlet "Y" strainer. Sediment from the main supply can get trapped in the screen along with installation materials such as pipe dope and flux. The screen should be cleaned and checked on a regular basis and replace if needed.
- e. Flow control in solenoid valve outlet elbow clogged remove & clean.

SENSOR TROUBLE SHOOTING:

1. IF LIGHT WITHIN SENSOR DOES NOT FLASH ONCE WHEN USER IS WITHIN RANGE:

- a. Verify 9VDC output of battery pack.
- b. Replace defective batteries.
- c. Sensor in "Security Mode" after 30 seconds of constant detection. Remove source of detection and wait 30 second before checking.
- d. Sensor is picking up a highly reflective surface. Eliminate cause of reflection and wait 30 seconds before checking.

2. IF LIGHT WITHIN SENSOR LENS FLASHES ONCE WHEN THE USER IS WITHIN RANGE:

- a. Repair bad connection from sensor to solenoid.
- b. There is debris or scale in the solenoid assembly. Remove solenoid, pull out plunger and spring. Clean with scale remover solution.
- c. There is debris or scale in center or two holes in convolution of the water diaphragm. Remove and clean.

CLEANING & MAINTENANCE GUIDE:

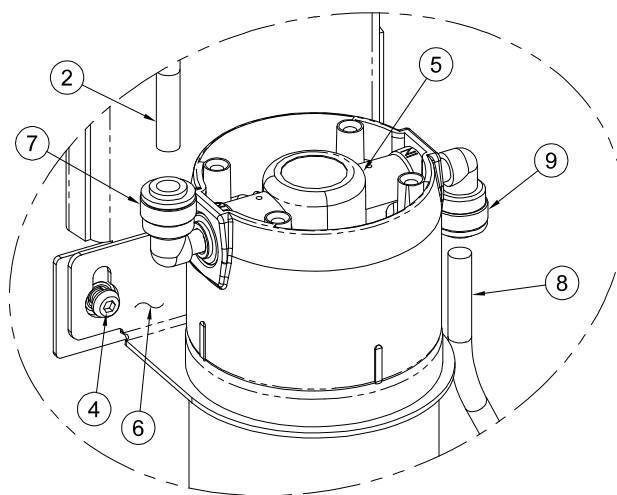
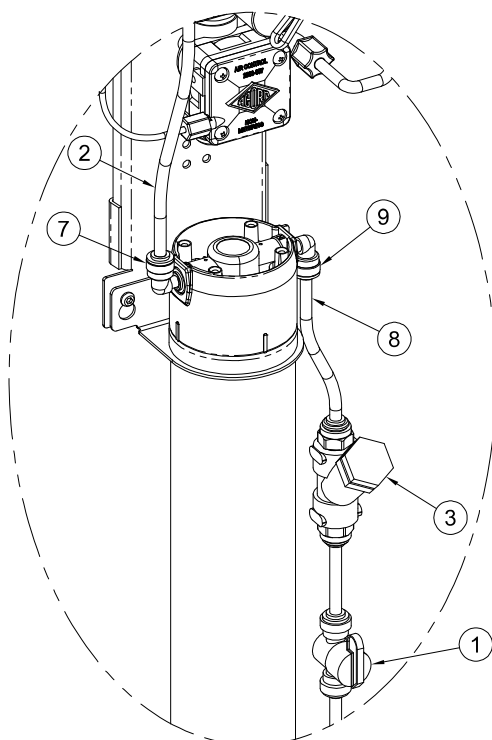
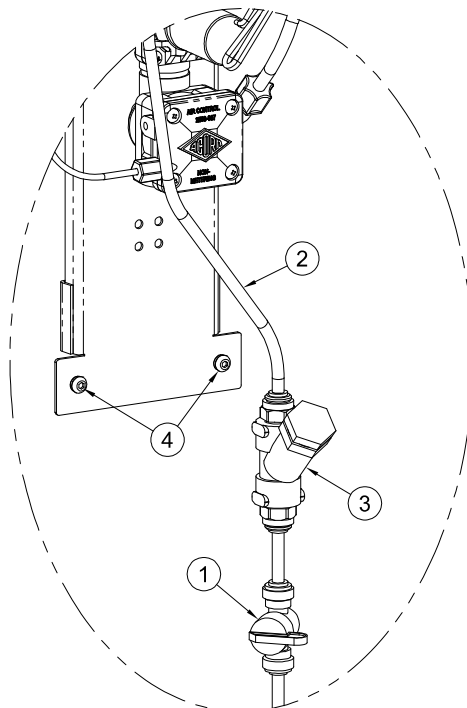
For Powder coated units: Units should be cleaned using a mild soap solution with a sponge or cotton cloth. Wipe down surfaces then rinse with clean water.

For Stainless steel units:

1. To Remove water spots or rust spots, stainless steel cleaner/polish on a cloth is recommended.
2. If there are stubborn spots or if you wish to treat a scratch, synthetic abrasive general purpose pads such as Scotch-Brite™ are recommended.
3. Apply stainless steel cleaner/ polish to the synthetic abrasive pads and carefully rub the panel in the direction of the grain pattern.
4. DO NOT use harsh chemicals, abrasive or petroleum based cleaners. Use of these will void the Murdock warranty. DO NOT use abrasives on powder coated units.
5. Stainless steel should be kept clean at all times. If a coating of stainless steel cleaner/ polish is maintained, stainless steel surfaces will retain their new, clean, polished appearance indefinitely.

FILTER INSTALLATION

1. Remove access panel. Turn the inlet valve **1** 1/4 turn clockwise to close.
2. Remove 1/4" supply tube **2** from strainer assembly **3**. Loosen filter mounting screws **4**.
3. With filter **5** inserted into filter bracket **6**, slide over mounting screws **4** and push downward and tighten screws **4**.
5. Insert 1/4" tube **2** into filter outlet elbow **7** and provided 1/4" tube **8** into strainer **3** and into filter inlet elbow **9**.
6. Open inlet supply valve **1** slowly and activate drinking fountain or bottle filler and inspect for leaks. If present correct. If no leaks present, activate the unit and flush the filter:
6 Gallons (23 Liters)
 - a. Using Bottle Filler, flush for 6 Minutes
7. After flushing reinstall the access panel.



DETAIL NOT TO SCALE

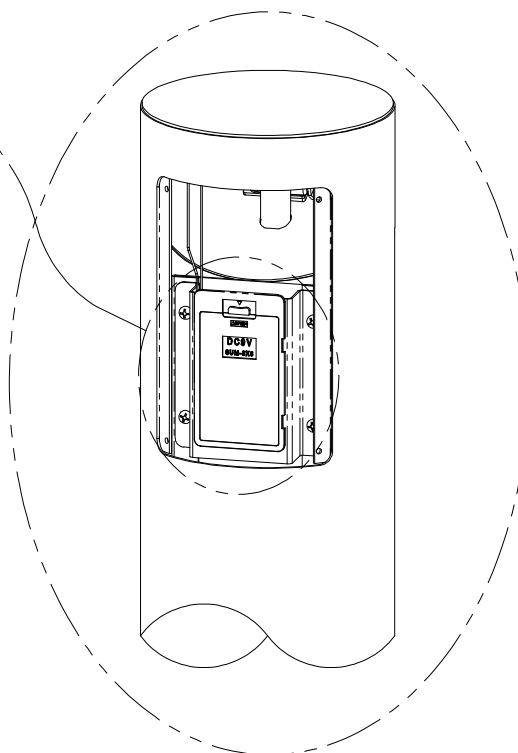
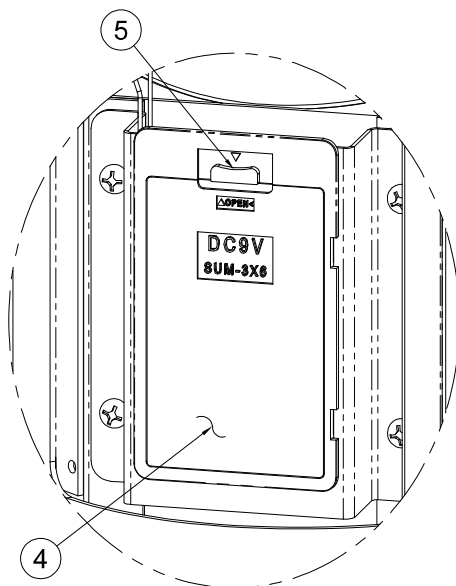
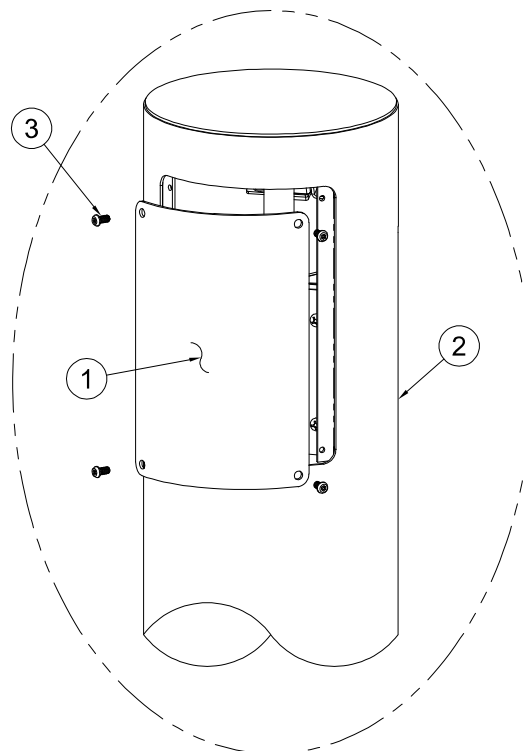
BATTERY REPLACEMENT:

1. Remove access panel **1** from housing **2** by removing vandal resistant screws **3**.

NOTE:

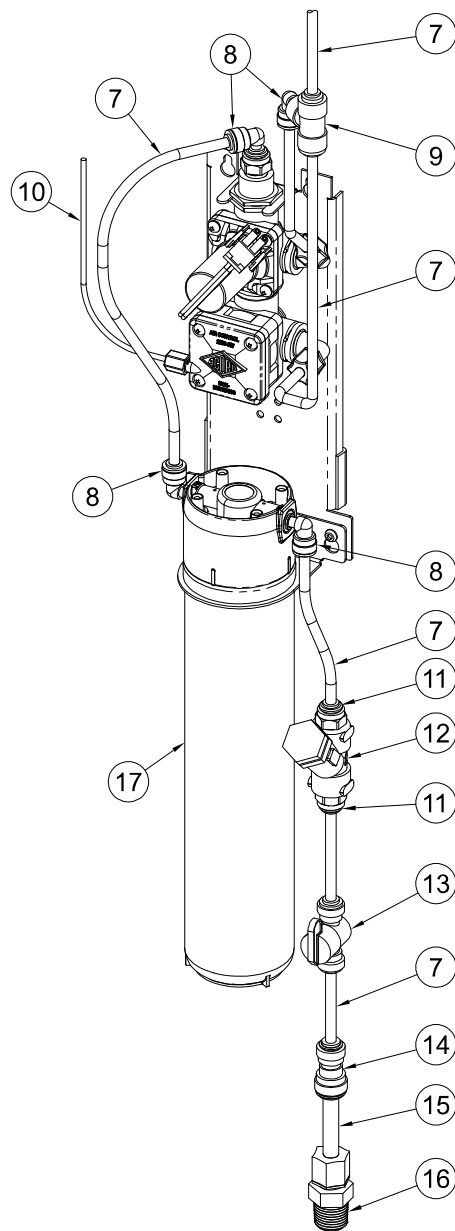
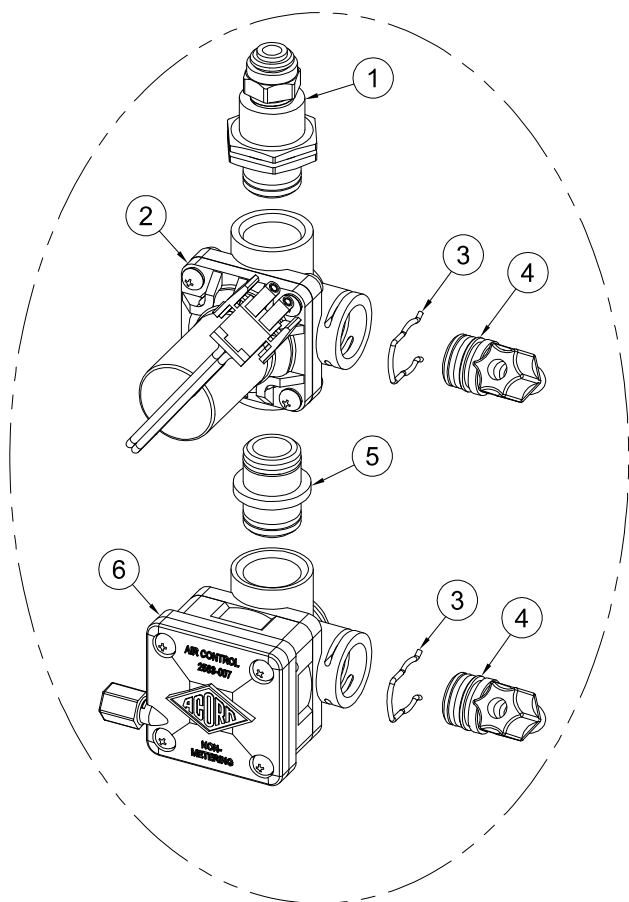
Do not disconnect the wires from the battery pack or battery pack from holder unless necessary.

2. Remove battery pack cover **4** press down on button **5** and swing cover **4** downward.
3. Replace the six alkaline AA batteries while observing polarity.
4. Reinstall battery pack cover **4**, ensure full closed. Test for function.
5. Reinstall access panel **1** to housing **2** with vandal resistant screws **3**.



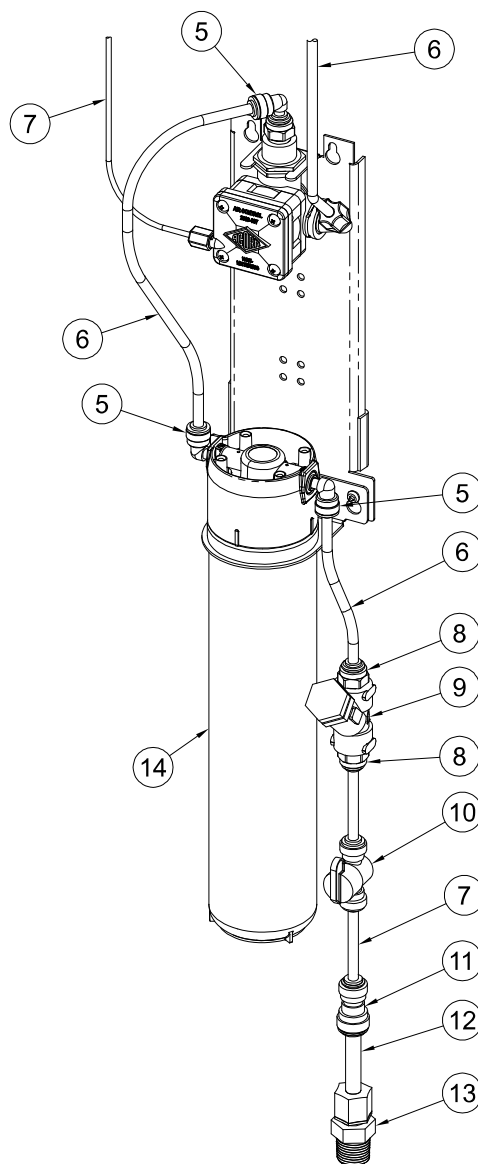
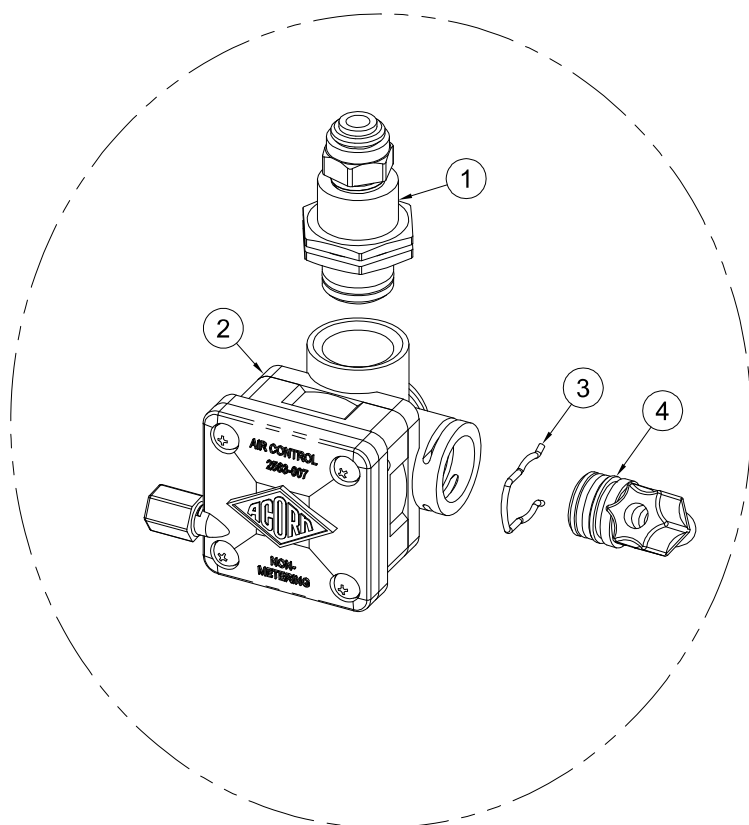
- 1 Bottle Filler Access Panel
- 2 Bottle Filler Housing
- 3 Vandal Resistant Screws
- 4 Battery Pack Cover
- 5 Battery Pack Cover Button

OUTDOOR BOTTLE FILLER VALVE BREAKDOWN:
M-OBF4, Shown



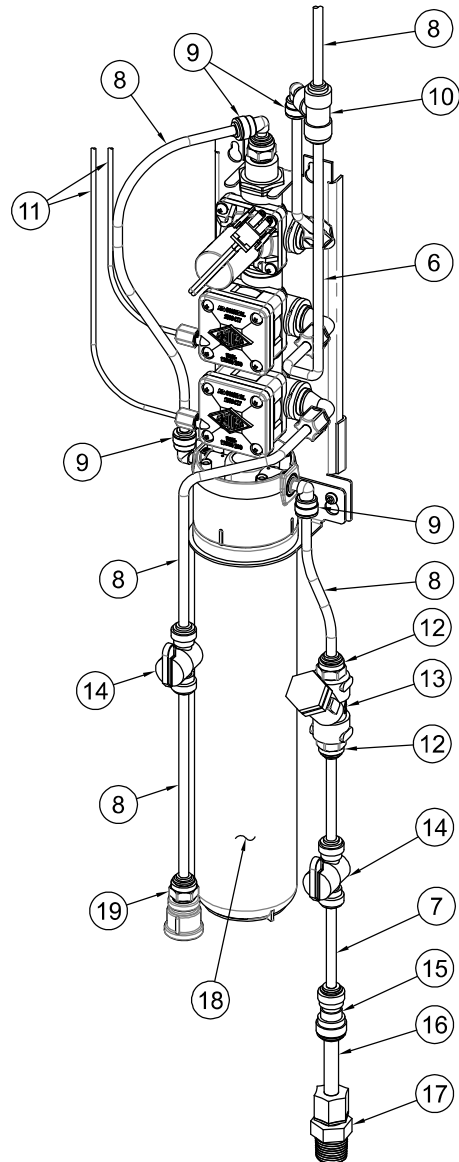
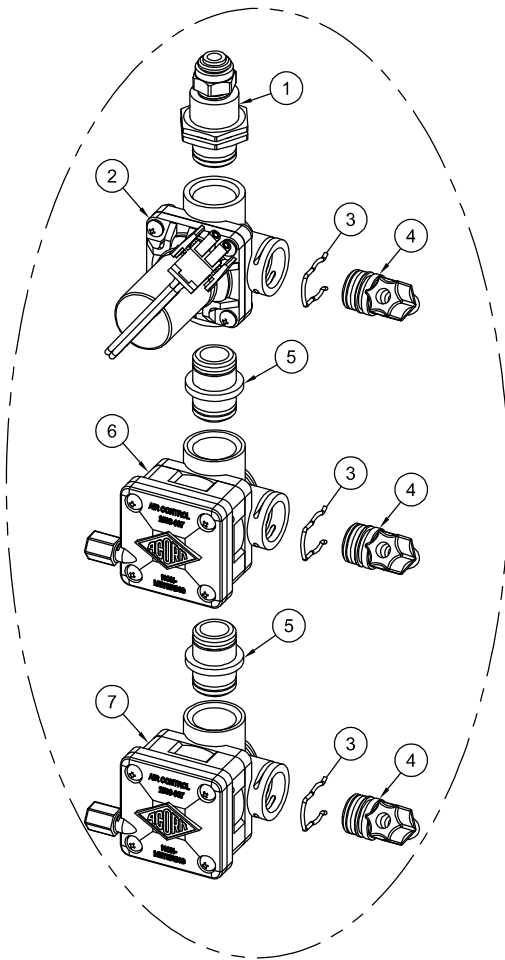
ITEM	PART NUMBER	DESCRIPTION	ITEM	PART NUMBER	DESCRIPTION
1	2800-129-001	1/4" PUSH-IN CONNCT ADAPT ASSY	10	2150-010-199	1/8" OD LDPE AIR TUBING (10 FT.)
2	2570-130-001	9VDC SOLENOID VALVE ASSEMBLY	11	1895-125-000	1/4" NPT x 1/4" O.D. PUSH-IN CONNECTION
3	0326-100-000	RETAINING CLIP, AIR-CONTROL VALVE	12	7000-021-000	1/4" NPT "Y" STRAINER
4	2570-051-001	1/4" OD PLASTIC ELBOW ASSEMBLY	13	7000-420-000	1/4" OD PUSH-IN 1/4 TURN SHUT-OFF VALVE
5	2570-028-001	MALE x MALE O-RING CONNECTOR ASSEMBLY	14	1895-123-000	1/4" O.D. x 3/8" O.D. PUSH-IN UNION CONNECTION
6	2570-101-001	NON-METERING AIR-CONTROL VALVE ASSEM (LH)	15	2170-000-000	3/8" O.D. PE TUBING
7	2169-010-199	1/4" OD LLDPE TUBING (BLUE) 10 FT.	16	1895-005-000	3/8" O.D. x 1/2" NPT MALE CONNECTOR
8	1895-709-000	1/4" OD x 1/4" OD STEM PUSH-IN ELBOW	17	7012-347-000	RWF3000 3000 GALLON REPLACEMENT FILTER
9	1895-710-000	1/4" O.D. UNION TEE			

**OUTDOOR BOTTLE FILLER VALVE BREAKDOWN:
M-OBF4M, Shown**



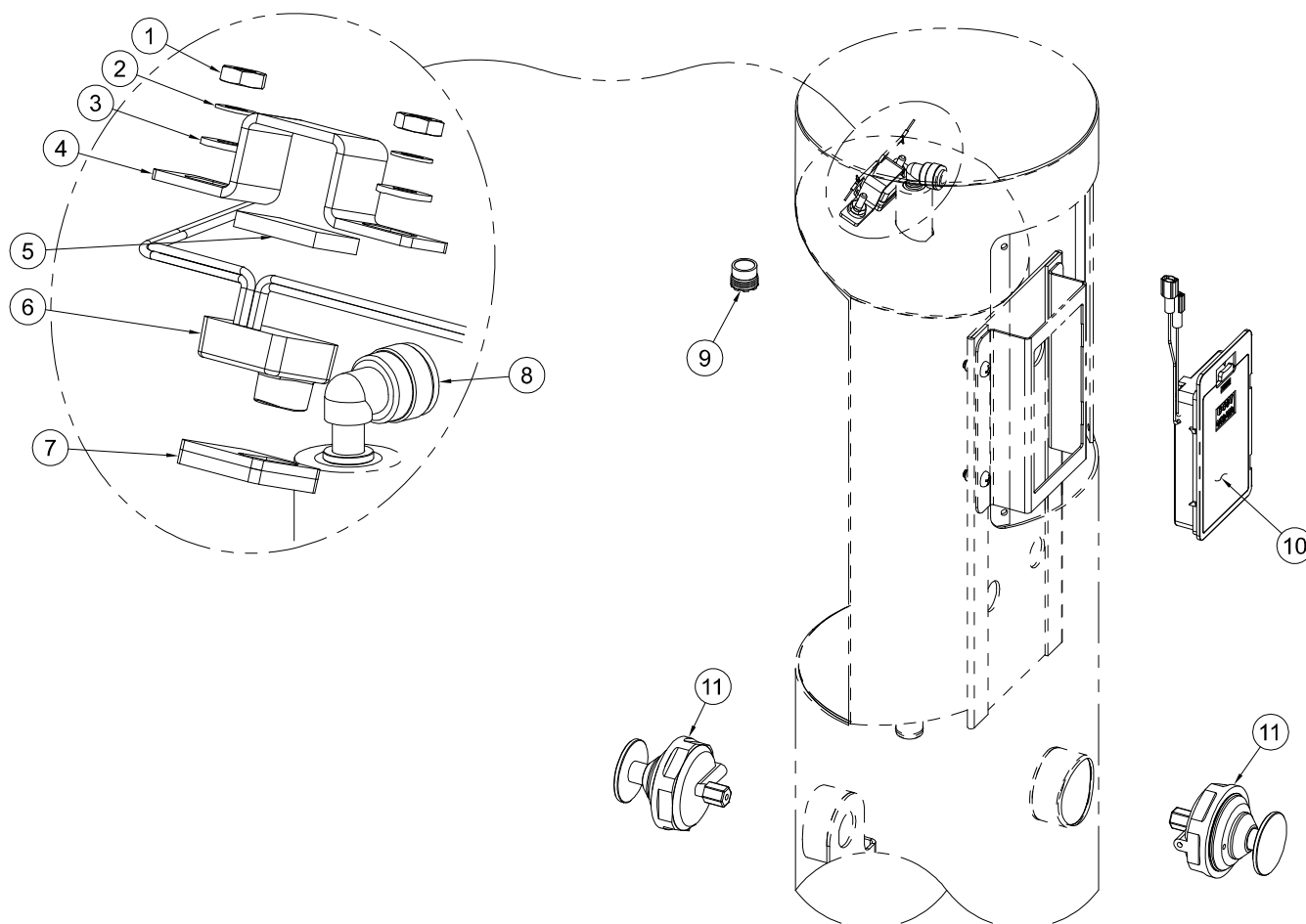
ITEM	PART NUMBER	DESCRIPTION	ITEM	PART NUMBER	DESCRIPTION
1	2800-129-001	1/4" PUSH-IN CONNCT ADAPT ASSY	8	1895-125-000	1/4" NPT x 1/4" O.D. PUSH-IN CONNECTION
2	2570-101-001	NON-METERING AIR-CONTROL VALVE ASSEM (LH)	9	7000-021-000	1/4" NPT "Y" STRAINER
3	0326-100-000	RETAINING CLIP, AIR-CONTROL VALVE	10	7000-420-000	1/4" OD PUSH-IN 1/4 TURN SHUT-OFF VALVE
4	2570-051-001	1/4" OD PLASTIC ELBOW ASSEMBLY	11	1895-123-000	1/4" O.D. x 3/8" O.D. PUSH-IN UNION CONNECTION
5	1895-709-000	1/4" OD x 1/4" OD STEM PUSH-IN ELBOW	12	2170-000-000	3/8" O.D. PE TUBING
6	2169-010-199	1/4" OD LLDPE TUBING (BLUE) 10 FT.	13	1895-005-000	3/8" O.D. x 1/2" NPT MALE CONNECTOR
7	2150-010-199	1/8" OD LDPE AIR TUBING (10 FT.)	14	7012-347-000	RWF3000 3000 GALLON REPLACEMENT FILTER

OUTDOOR BOTTLE FILLER VALVE BREAKDOWN:
M-OBF4-FP, Shown



ITEM	PART NUMBER	DESCRIPTION	ITEM	PART NUMBER	DESCRIPTION
1	2800-129-001	1/4" PUSH-IN CONNCT ADAPT ASSY	11	2150-010-199	1/8" OD LDPE AIR TUBING (10 FT.)
2	2570-130-001	9VDC SOLENOID VALVE ASSEMBLY	12	1895-125-000	1/4" NPT x 1/4" O.D. PUSH-IN CONNECTION
3	0326-100-000	RETAINING CLIP, AIR-CONTROL VALVE	13	7000-021-000	1/4" NPT "Y" STRAINER
4	2570-051-001	1/4" OD PLASTIC ELBOW ASSEMBLY	14	7000-420-000	1/4" OD PUSH-IN 1/4 TURN SHUT-OFF VALVE
5	2570-028-001	MALE x MALE O-RING CONNECTOR ASSEMBLY	15	1895-123-000	1/4" O.D. x 3/8" O.D. PUSH-IN UNION CONNECTION
6	2570-100-001	NON-METERING AIR-CONTROL VALVE ASSEM	16	2170-000-000	3/8" O.D. PE TUBING
7	2570-101-001	NON-METERING AIR-CONTROL VALVE ASSEM (LH)	17	1895-005-000	3/8" O.D. x 1/2" NPT MALE CONNECTOR
8	2169-010-199	1/4" OD LLDPE TUBING (BLUE) 10 FT.	18	7012-347-000	RWF3000 3000 GALLON REPLACEMENT FILTER
9	1895-709-000	1/4" OD x 1/4" OD STEM PUSH-IN ELBOW	19	4125-113-001	PET FOUNTAIN ADAPTER CONNECTION
10	1895-710-000	1/4" O.D. UNION TEE			

OUTDOOR BOTTLE FILLER OPERATIONS PARTS BREAKDOWN :
M-OBF4-PF SHOWN FOR REFERENCE



ITEM	PART NUMBER	DESCRIPTION	ITEM	PART NUMBER	DESCRIPTION
1	0302-003-000	#8-32 UNF HEX NUT, SS	7	7013-009-001	STAINLESS STEEL SPACER
2	6527-108-000	#8 INTERNAL TOOTH LOCKWASHER	8	1895-709-000	1/4" OD x 1/4" OD STEM PUSH-IN ELBOW
3	0331-023-000	#8 FLAT WASHER, SS	9	7013-115-000	1.5 GPM LAMINAR FLOW NOZZLE
4	7013-010-199	NANO SENSOR BRACKET	10	0710-361-001	AA 6-PACK BATTERY HOLDER
5	7013-019-199	FOAM TAPE 7/8" x 1/5" x 1/8"	11	7002-125-001	AIR-CONTROL PUSHBUTTON
6	2563-386-002	BLUE NANO SENSOR ASSEMBLY			

OUTDOOR BOTTLE FILLER WASTE ASSEMBLY PARTS BREAKDOWN:

ITEM	PART NUMBER	DESCRIPTION
1	0124-037-000	#8 x 3/4" HEX SELF TAPPING SCREW
2	7000-006-000	DRAIN ADAPTER GASKET
3	7003-182-000	ACCESS DRAIN, BI-LEVEL, UPPER
4	7003-184-000	7/8" SPRING HOSE CLAMP
5	7013-090-199	FLEX HOSE, 5/8 x 7/8 (44" LONG)
6	4102-250-000	5/8" MULTI-BARB TEE
7	7003-183-000	FLEX HOSE, 5/8 x 7/8 (6" LONG)
8	7007-008-199	PET FOUNTAIN STRAINER
9	0112-008-000	#10-32 x 1" CENTER REJECT SCREW

