

WASHER SERIES DRYER SERIES

S.wash e (30/40/60/100/120kg)

S.wash e Tilting (100/120kg)

S.dry f (40/60/100/120kg)

S.dry f Tilting (100kg)



COMPANY PROFILE



20⁺
years
DEVELOPMENT

CLMTexfinity is a global leader in industrial laundry solutions, offering a complete range of high-performance machines tailored to meet the needs of professional laundries worldwide. With a strong focus on innovation, reliability, and customer-centric solutions, CLMTexfinity provides tunnel washers, high-speed ironing lines, tunnel finishing systems, towel folders, fully integrated laundry systems. Our expertise allows us to support laundries in achieving maximum efficiency, quality, and sustainability in their operations.

To ensure the highest quality and production capacity, CLMTexfinity operates across multiple locations, including Belgium, Nantong, Shanghai and Kunshan, covering a total production area of **130,000 square meters**.

This allows CLMTexfinity to combine European engineering standards with high-quality manufacturing, ensuring state-of-the-art laundry equipment that meets global industry demands. With over **20 years of development**, CLMTexfinity continues to expand its presence as a trusted partner for industrial laundries, delivering cutting-edge solutions and unparalleled service worldwide.

CATALOGUES

03	S.washe	30 / 40 / 60 / 100 / 120 kg
09	S.washe Tilting	100 / 120 kg
15	S.dryf	40 / 60 / 100 / 120 kg
19	S.dryf Tilting	100 kg



01

S.wash e 30 / 40 / 60 / 100 / 120 kg

Pioneering the era of
intelligent washing



TECHNICAL FEATURES



12.1-inch HD touchscreen control panel

S.wash e fully automatic washer features a 12.1-inch HD touchscreen design, capable of automatic water addition, prewash, main wash, rinsing, and neutralizing processes. It includes 30 preset wash programs and 5 frequently used one-touch automatic cycles.



Smart load weighing system

The intelligent weighing system in the S.wash e fully automatic washer precisely detects each load's weight and automatically adjusts the water, steam, and detergent levels accordingly. This ensures consistent wash quality while reducing consumption of water, electricity and chemicals.



Smart three-color status indicator

The S.wash e fully automatic washer is equipped with a smart three-color status indicator, enabling clear visibility of the machine's operation from a distance. The indicator displays key statuses such as active cycle, cycle complete, and fault alerts.



01

RATIONAL STRUCTURE ADVANCED TECHNOLOGY

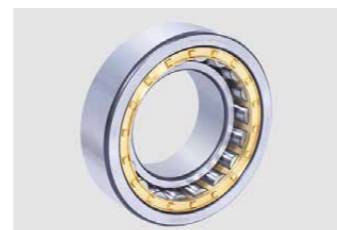
Distinctive features

98%

Shock absorption rate

270°

Rolled edge opening design



Triple-layer shock absorption system

- S.wash e fully automatic washer adopts a unique lower suspension shock absorption system, featuring a triple-structure design: inner and outer dual-layer base springs, rubber feet, and dampers. This advanced system achieves ultra-low vibration with a shock absorption rate of up to 98%, eliminating the need for a fixed foundation and allowing installation on any type of floor.



270-degree rolled edge drum opening

- S.wash e fully automatic washer features a 270-degree rolled edge at the junction between the inner and outer tubs. This precision-engineered design creates a smooth, high-strength interface with a minimal gap, significantly reducing the risk of fabric snagging or tearing during loading and unloading.

02

SUPERIOR DEHYDRATION RATE

Energy saving and consumption reduction

400G

Ultra-high spin extraction power



- S.wash e fully automatic washer is engineered with a reinforced structure, an efficient transmission system, and a high-quality inverter, all designed to support its powerful 400G extraction force. This high-speed extraction significantly reduces the moisture content in towels and linen, resulting in shorter drying times, higher daily throughput, and reduced steam consumption-substantially lowering operational costs.

03

SAFETY DESIGN

Ensuring worry-free washing

The outer drum body tilts backward by 3.5 degree

Extra-large stainless steel loading door



Extra-large stainless steel loading door

- S.wash e fully automatic washer features a spacious, stainless steel front-loading door for fast and effortless garment handling. Its electronic lock system, controlled by advanced automation, opens only after the spin cycle completes, ensuring safety and peace of mind.



304 stainless steel components

- All water-contacting parts-including the inner drum and outer cylinder-are made from durable 304 stainless steel. This construction offers superior rust resistance and consistent washing quality over years of use.



3.5° tilted drum design

- The drum is tilted backward by 3.5°, enabling multidirectional garment movement for improved cleaning efficiency. This innovative design also helps prevent fabric damage near the door area.

04

BRANDED ACCESSORIES

More stable quality
Reduced after-sales costs



Well known electrical components

- S.wash e fully automatic washer uses well known electrical components, including Mitsubishi inverters from Japan, Schneider contactors from France, and all wires, plugs, and bearings are international brands.

05

PRECISION-PROCESSED TRANSMISSION STRUCTURE

Durable and long-lasting

160 mm
Largest main shaft diameter

5 years
No need to replace bearing seals



Reliable transmission system

- The transmission system of the S.wash e fully automatic washer is meticulously designed, with the thickest diameter of the main shaft reaching 160 mm. Imported roller bearings and oil seals ensure no need for replacement for 5 years.



One-piece die-cast belt pulley

- The belt pulley of the S.wash e fully automatic washer is made of high-grade aluminum alloy, integrally die-cast, ensuring the assembly accuracy of the main shaft, with excellent rust resistance, corrosion resistance, and shock absorption, making it durable and long-lasting.



Technical Parameters



Specifications	S.wash e 30	S.wash e 40	S.wash e 60	S.wash e 100	S.wash e 120
Operating voltage (V/P/Hz)	380/3/50	380/3/50	380/3/50	380/3/50	380/3/50
Max. washing capacity (kg)	30	40	60	100	120
Drum volume (L)	300	400	600	1000	1200
Max. spinning speed (rpm)	870	833	760	745	745
Transmission power (kw)	4	5.5	7.5	11	11
Steam pressure (MPa)	0.4 ~ 0.6	0.4 ~ 0.6	0.4 ~ 0.6	0.4 ~ 0.6	0.4 ~ 0.6
Inlet water pressure (MPa)	0.2 ~ 0.4	0.2 ~ 0.4	0.2 ~ 0.4	0.2 ~ 0.4	0.2 ~ 0.4
Noise (db)	≤ 70	≤ 70	≤ 70	≤ 70	≤ 70
Dehydration factor (G)	350	350	350	400	400
Steam pipe diameter (mm)	DN25	DN25	DN25	DN25	DN25
Inlet pipe diameter (mm)	DN40	DN40	DN40	DN50	DN50
Hot water pipe diameter (mm)	DN40	DN40	DN40	DN50	DN50
Drain pipe diameter (mm)	DN65	DN100	DN100	DN100	DN100
Inner drum diameter (mm)	820	900	1080	1310	1310
Inner drum depth (mm)	570	660	680	750	970
Total weight (kg)	1350	2200	2600	3260	3360
Dimensions L x W x H (mm)	1480x1245x1770	1690x1360x1850	1710x1540x2025	1815x2090x2390	1815x2310x2390

02

S.wash e 100T / 120T (tilting) 100 / 120 kg

Pioneering the era of
intelligent washing



TECHNICAL FEATURES

15-degree forward-tilting design for easier discharge



Reducing Worker Labor Intensity

The S.wash e-T fully automatic washer incorporates a 15-degree forward-tilting design, which facilitates easier unloading of laundry and reduces manual handling for operators.



12.1-inch HD touchscreen control panel

The S.wash e-T fully automatic washer is equipped with a 12.1-inch HD touchscreen for intuitive operation. The system supports automatic water filling, pre-wash, main wash, rinsing, and neutralization processes. It offers 30 preset washing programs and 5 frequently used programs for daily operations.



Smart load weighing system

The S.wash e-T washer is equipped with an intelligent weighing system that automatically detects the weight of each load. Based on the measured load, the system precisely adjusts water, steam, and detergent levels, ensuring consistent washing quality while significantly reducing water, electricity, steam, and chemical consumption.



Smart three-color status indicator

The S.wash e-T washer incorporates an intelligent three-color LED status indicator, allowing operators to easily monitor machine status from a distance. The light colors indicate key conditions: Green for normal operation, Blue for cycle complete, and Red for fault or alarm status.



01

RATIONAL STRUCTURE ADVANCED TECHNOLOGY

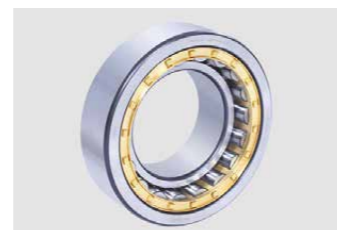
Distinctive features

98%

Shock absorption rate

270°

Rolled edge opening design



Triple-layer shock absorption system

- The S.wash e-T fully automatic washer adopts a unique lower suspension shock absorption system, featuring a triple-structure design: inner and outer dual-layer base springs, rubber feet, and dampers. This advanced system achieves ultra-low vibration with a shock absorption rate of up to 98%, eliminating the need for a fixed foundation and allowing installation on any type of floor.



270-degree rolled edge drum opening

- The S.wash e-T fully automatic washer features a 270-degree rolled-edge opening at the junction between the inner drum and outer cylinder. This design provides a smooth surface, enhanced structural strength, and minimal gap, which together reduce wear and prevent damage to garments during loading and unloading.

02

SUPERIOR EXTRACTION PERFORMANCE

Energy-saving and high-efficiency operation

400G

Ultra-high spin extraction power



- The S.wash e-T fully automatic washer is engineered with a reinforced structure, an efficient transmission system, and a high-quality inverter, all designed to support its powerful 400G extraction force. This high-speed extraction significantly reduces the moisture content in towels and linen, resulting in shorter drying times, higher daily throughput, and reduced steam consumption-substantially lowering operational costs.

03

SAFETY
DESIGN

Ensuring
worry-free
washing

The outer drum body tilts
backward by 3.5 degree

Extra-large stainless steel
loading door



Extra-large stainless steel loading door

• The S.wash e-T fully automatic washer features a spacious, stainless steel front-loading door for fast and effortless garment handling. Its electronic lock system, controlled by advanced automation, opens only after the spin cycle completes, ensuring safety and peace of mind.



304 stainless steel components

• All water-contacting parts-including the inner drum and outer cylinder-are made from durable 304 stainless steel. This construction offers superior rust resistance and consistent washing quality over years of use.



3.5° tilted drum design

• The drum is tilted backward by 3.5°, enabling multidirectional garment movement for improved cleaning efficiency. This innovative design also helps prevent fabric damage near the door area.

04

BRANDED
ACCESSORIES

More stable quality
Reduced after-sales
costs



Well known electrical components

• The S.wash e-T fully automatic washer is equipped with high-quality electrical components sourced from internationally renowned brands. It features Mitsubishi inverters from Japan, Schneider contactors from France, and electrical wiring, plugs, and bearings from leading global manufacturers. These premium components ensure reliable performance, extended service life, and stable operation in demanding industrial environments.

05

PRECISION-PROCESSED
TRANSMISSION STRUCTURE

Durable and long-lasting

160 mm
Largest main shaft
diameter

5 years
No need to replace
bearing seals



Reliable transmission system

• The S.wash e-T fully automatic washer features a robust, precision-engineered transmission system. The main shaft, with a maximum diameter of 160 mm, is supported by imported roller bearings and oil seals that offer stable, maintenance-free operation for up to 5 years.



One-piece die-cast belt pulley

• The belt pulley is integrally die-cast from high-grade aluminum alloy to ensure precise shaft alignment. Its one-piece design provides excellent corrosion resistance, shock absorption, and long-term durability, contributing to smooth, vibration-free operation.

Technical
Parameters



Specifications	S.wash e 100T	S.wash e 120T
Operating voltage (V/P/Hz)	380/3/50	380/3/50
Max. washing capacity (kg)	100	120
Drum volume (L)	1000	1200
Max. spinning speed (rpm)	745	745
Transmission power (kw)	11	11
Steam pressure (MPa)	0.4 ~ 0.6	0.4 ~ 0.6
Inlet water pressure (MPa)	0.2 ~ 0.4	0.2 ~ 0.4
Noise (db)	≤ 70	≤ 70
Dehydration factor (G)	400	400
Steam pipe diameter (mm)	DN25	DN25
Inlet pipe diameter (mm)	DN50	DN50
Hot water pipe diameter (mm)	DN50	DN50
Drain pipe diameter (mm)	DN100	DN100
Inner drum diameter (mm)	1310	1310
Inner drum depth (mm)	750	970
Front tilt angel (°)	15	15
Total weight (kg)	3690	3830
Dimensions L x W x H (mm)	1860x1870x2470	1860x2090x2470

03

S.dry f 40 / 60 / 100 / 120 kg

Pioneering
the era of
intelligent
drying



TECHNICAL FEATURES



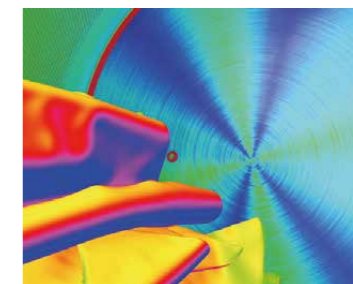
Advanced intelligent drying system

Equipped with a 10-inch full-color touchscreen, the system offers 99 built-in, customizable drying programs tailored to various fabric types and load sizes-delivering flexible, user-friendly operation.

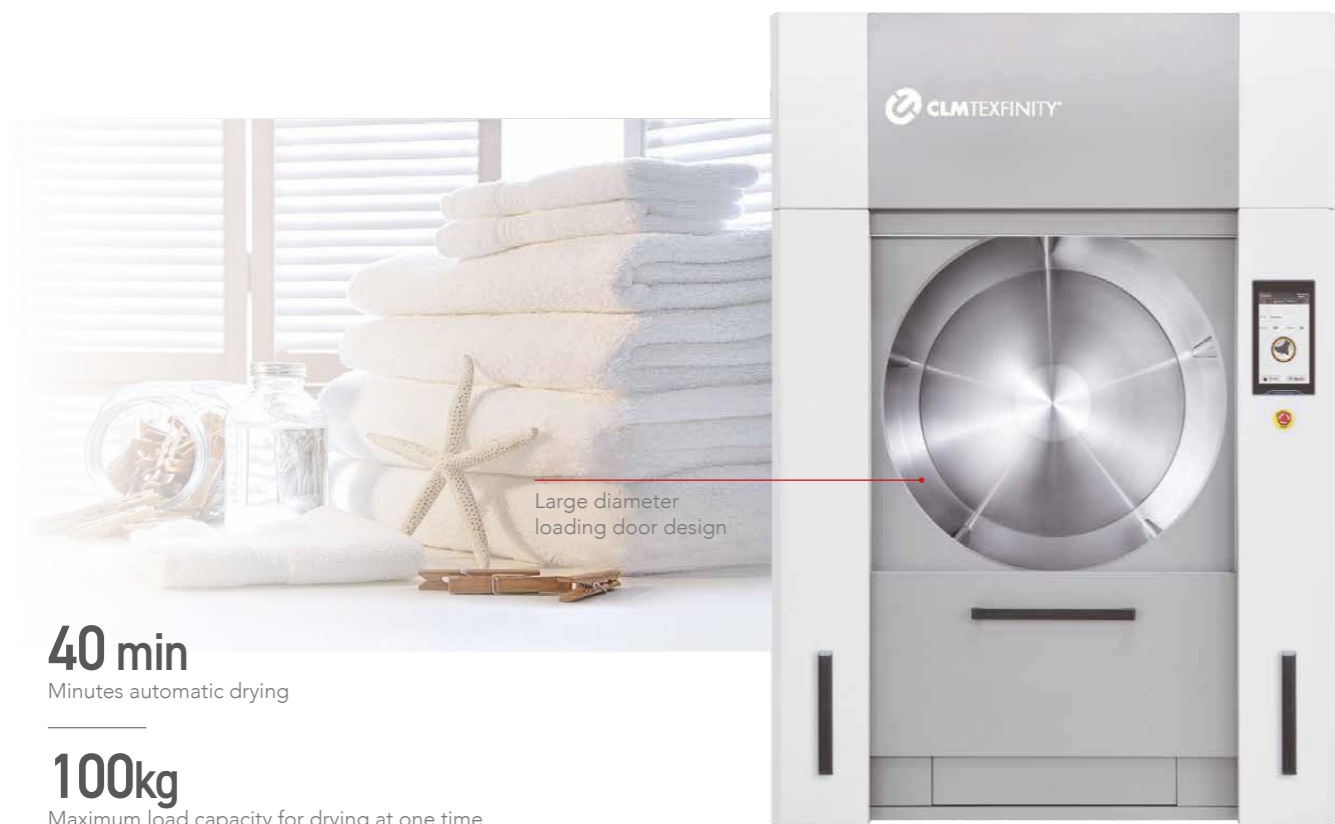


Sensor-based humidity control technology

Utilizing real-time moisture monitoring, the system automatically adjusts drying duration to prevent over-drying, protect fabric integrity, and improve energy efficiency.



Humidity control technology



40 min

Minutes automatic drying

100kg

Maximum load capacity for drying at one time



High efficiency

- The 100 kg dryer can directly load 100 kg of towels, with a steam pressure of over 5 kg, drying within 40 minutes, ensuring high efficiency and speed.



Loading capacity design

- Designed with a 1:20 loading capacity ratio, the inner drum is made of 304 stainless steel material.



Convenient door design

- Features an upper and lower door opening design with a door diameter of 1 meter, making loading and unloading towels effortless and time-saving.



High-power heating design

- Features a high-power heating system with an added insulation layer on the outer cylinder, ensuring quick temperature rise, good insulation effect, and improved drying efficiency.



10"

10 inches HD touchscreen

99

Built-in automatic programs



Well known electrical components

- All electrical components are well known brands, including Mitsubishi inverters, Schneider contactors, and all wires, plugs, and bearings are also international brands.



Multiple heating methods

- 3 different heating methods are possible: steam heating, electric heating, and gas heating.



Technical Parameters

Specifications	S.dryf40	S.dryf60	S.dryf100
Drum diameter (mm)	1140	1260	1460
Drum depth (mm)	875	980	1200
Volume (L)	800	1220	2000
Volume load ratio	20	20	20
Main motor power (kw)	1.1	1.5	2.2
Fan motor power (kw)	2.2	3.0	5.5
Rated voltage (v)	380	380	380
Heater power (kw)	36	48	81.6
Steam pressure (MPa)	0.6	0.6	0.6
Total weight (kg)	1000	1150	1400
Dimensions W x D x H (mm)	1360x1580x1955	1480x1765x2115	1680x2025x2355

04

S.dry f tilting 100 kg

Pioneering
the era of
intelligent
drying



TECHNICAL FEATURES



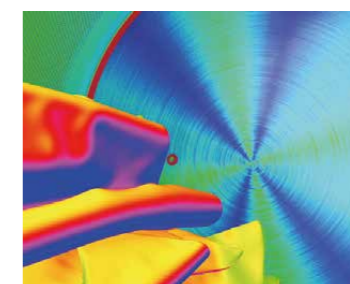
Advanced intelligent drying system

Equipped with a 10-inch full-color HD touchscreen, it includes 99 built-in editable automatic programs, allowing selection based on different clothes and linens.



Humidity control technology

Intelligent control of drying time, accurately controlling the moisture level of the linens to prevent over-drying and potential damage to the clothes while reducing energy consumption.



Humidity control technology



40 min

Minutes automatic drying

100kg

Maximum load capacity for drying at one time



High efficiency

- The 100 kg dryer can directly load 100 kg of towels, with a steam pressure of over 5 kg, drying within 40 minutes, ensuring high efficiency and speed.



Loading capacity design

- Designed with a 1:20 loading capacity ratio, the inner drum is made of 304 stainless steel material.



Convenient door design

- Features an upper and lower door opening design with a door diameter of 1 meter, making loading and unloading towels effortless and time-saving.



High-power heating design

- Features a high-power heating system with an added insulation layer on the outer cylinder, ensuring quick temperature rise, good insulation effect, and improved drying efficiency.



10"

10 inches HD touchscreen

99

Built-in automatic programs



Well known electrical components

- All electrical components are well known brands, including Mitsubishi inverters, Schneider contactors, and all wires, plugs, and bearings are also international brands.



Multiple heating methods

- Offers three heating methods: steam heating, electric heating, and gas heating.



Front tilt discharge design

- Quick and effortless discharge, reducing discharge time, lowering labor intensity, and improving the daily working efficiency of the dryer.



Technical Parameters

Specifications	S.dryf100T
Drum diameter (mm)	1460
Drum depth (mm)	1200
Volume (L)	2000
Volume load ratio	20
Main motor power (kw)	2.2
Fan motor power (kw)	5.5
Rated voltage (v)	380
Heater power (kw)	81.6
Steam pressure (MPa)	0.6
Total weight (kg)	1800
Dimensions W x D x H (mm)	1750x2120x2500



CLMTexfinity Europe

📍 Hoge Mauw 118, 2370 Arendonk, Belgium

🌐 www.clmtexfinity.com

✉ info@clmtexfinity.com

Social Media

🌐 www.linkedin.com/company/clm-texfinity/

📘 www.facebook.com/CLMTexfinity

📷 www.instagram.com/clmtexfinity/

📺 www.youtube.com/@CLMTexfinity