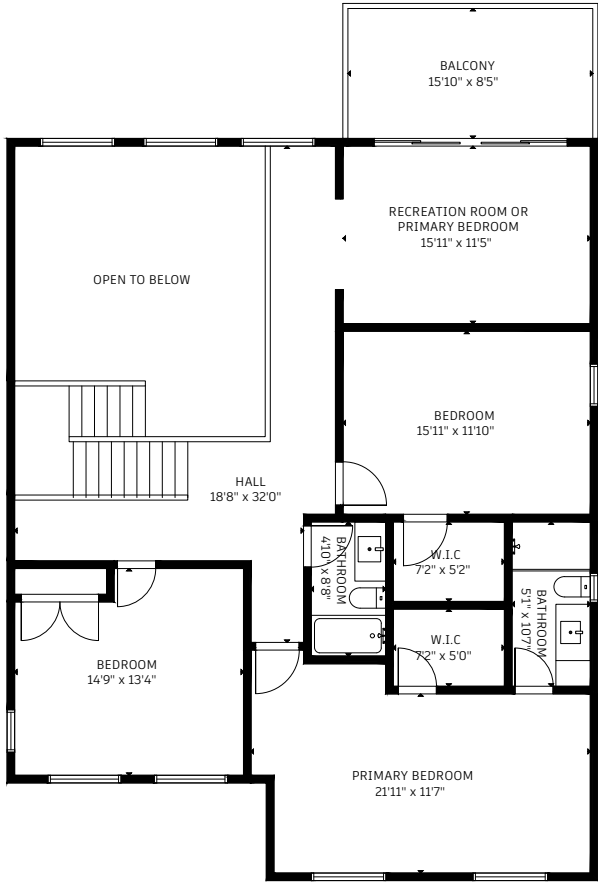


# 66 - 14500 MORRIS VALLEY ROAD

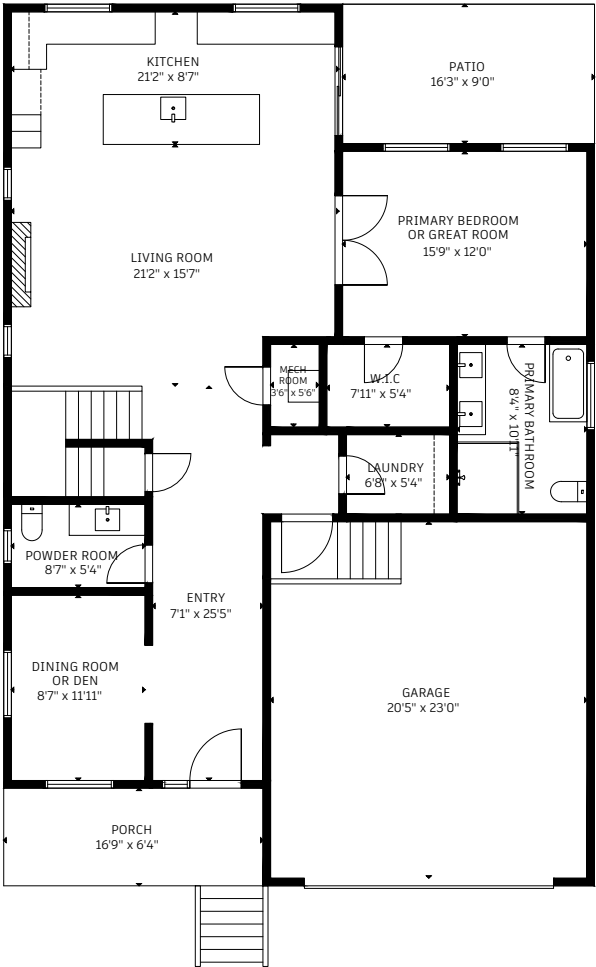
## MISSION, BC

MAIN LEVEL	1394 Sq. Ft
UPPER LEVEL	1664 Sq. Ft
TOTAL	3058 Sq. Ft
CRAWLSPACE	1312 Sq. Ft
GARAGE	470 Sq. Ft
PORCH	105 Sq. Ft
PATIO	146 Sq. Ft
BALCONY	132 Sq. Ft

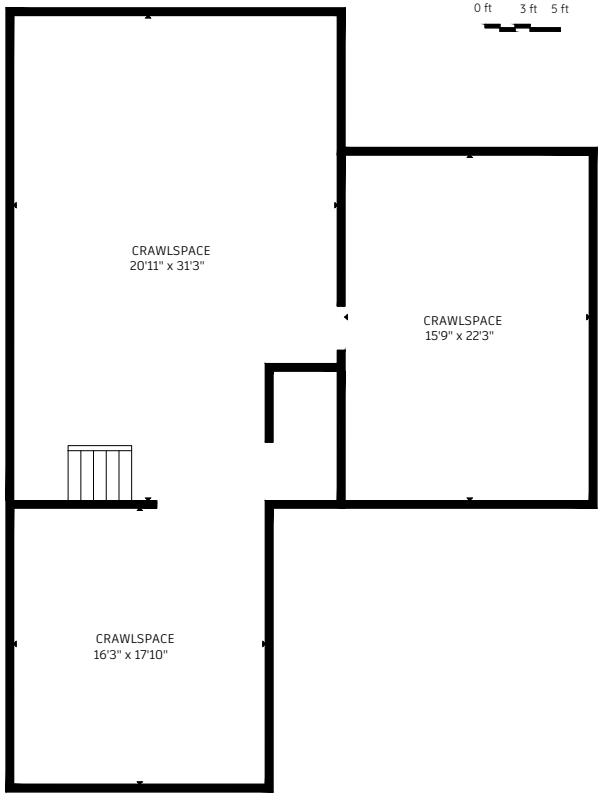
# OF BEDROOMS:	5
# OF BATHROOMS:	4



UPPER LEVEL



MAIN LEVEL



CRAWLSPACE

The floor plan and the measurements are approximate and are to be used for advertising usage only. May include unfinished area. Not suitable for architectural or construction. E&O Insured.