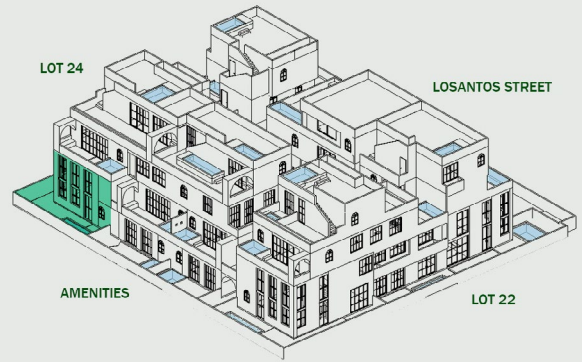




04 / Amalfi

2 Bedrooms | 2 Bathrooms | 1 Pool

| | |
|----------|-----------------|
| INTERIOR | 172.8 |
| EXTERIOR | 49.7 |
| TOTAL | 222.5 SQ. M. |
| | 2394.99 SQ. FT. |



GROUND FLOOR



LEVEL 2

Amalfi – Elegant Living with Double-Height Grandeur

With impressive double-height ceilings and an expansive two-bedroom, two-bathroom layout, Amalfi is a true architectural masterpiece. Designed with luxurious exposed stone, marble countertops, and a spacious living area, it offers the perfect balance of relaxation and refined entertaining. The loft-style primary bedroom overlooks the living space below, with accordion doors that can be closed for privacy or opened to embrace the natural light from the soaring windows. The private garden, complete with an outdoor shower, creates a serene escape, while the plunge pool adds an indulgent touch. A striking feature wall enhances the ambiance of effortless sophistication. Blending European aesthetics with modern comfort, Amalfi is a timeless retreat.