

# LivingPackets

Secure Packaging-as-a-Service for high-value delivery – a connected, reusable shipping system by LivingPackets.



# Secure packaging, delivered as a service.

THE BOX is a connected, reusable shipping system that protects high-value goods in transit – and the platform that proves they arrived untouched.

**From a risk you insure  
to an outcome you can  
prove.**

Physical security and a real-time platform, in one reusable package.

## No more loss

Lock + tracking stop theft and disappearance in transit.

## No more damage

Sensors flag every shock, drop and excursion.

## No more disputes

One-time codes prove who opened the box, and when.

● Tamper-proof lock

● GPS tracking & alerts

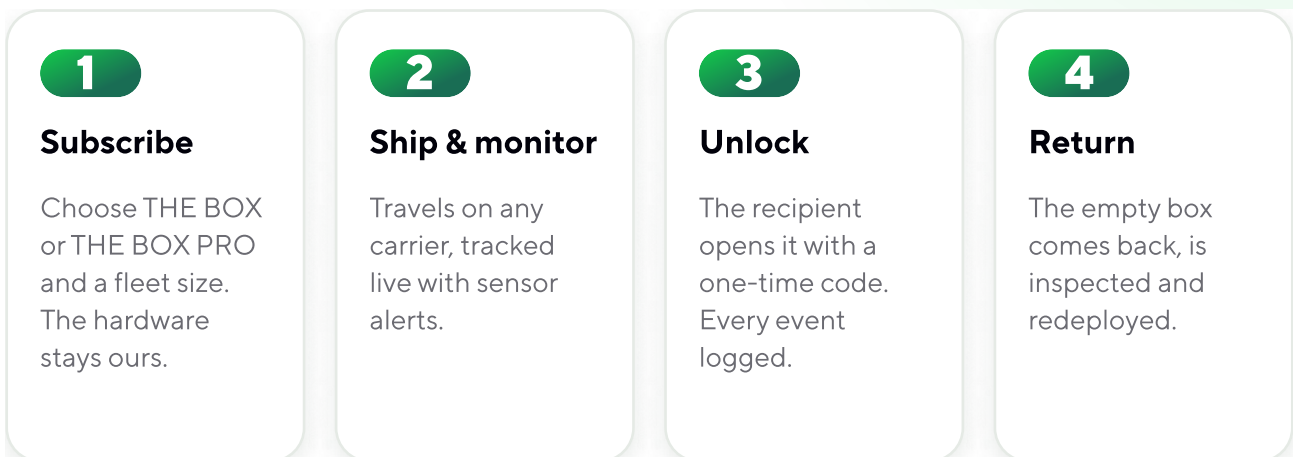
● Reusable, returnable

● Carrier-agnostic

One platform behind every shipment – track it via GPS, get alerts, and prove it arrived untouched, in real time.

# Packaging-as-a-Service, end to end.

LivingPackets owns and manages the fleet. Customers subscribe per box, per month – no capital outlay, no asset to maintain, no single-use packaging to buy again.



## Every subscription includes

● **Hardware**

THE BOX or THE BOX PRO, reused for many cycles

● **Cloud platform**

GPS tracking, event history and alerts

● **Security suite**

Electronic lock & recipient authentication

● **Sensor suite**

GPS, shock, tilt, temp, humidity, light, door

● **Digital label**

7.8-inch e-ink and digital labelling

● **Fleet & support**

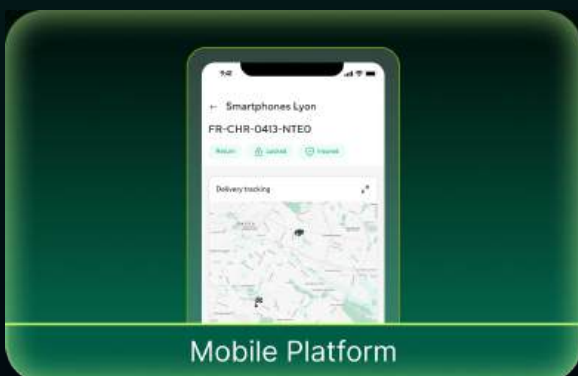
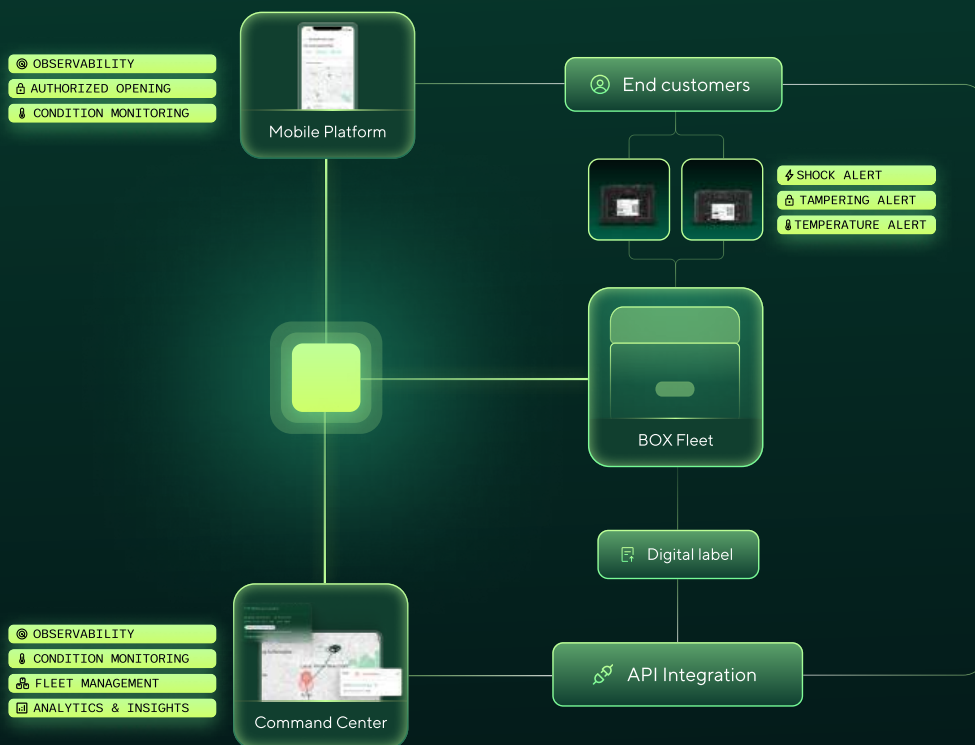
Maintenance, returns and account management

**Pricing available upon request**

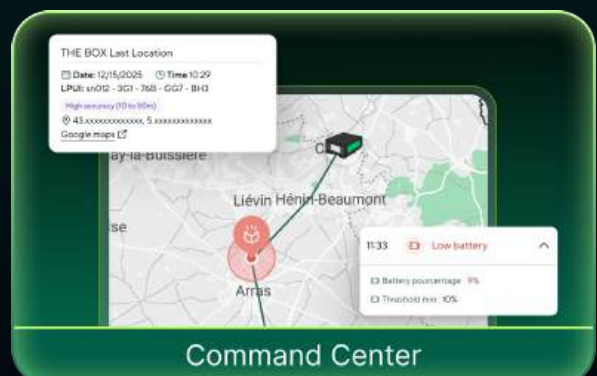
Long-term partnership · defined ramp-up · carrier-agnostic · you keep your data

# One connected platform.

Every THE BOX reports to the cloud in real time – track shipments, get shock, tamper and temperature alerts, authorize openings, and prove delivery from a web Command Center and a mobile app. The software is part of the service.



Mobile app – track & authorize on the go



Command Center – live map, alerts & history

# The hardware.

One connected platform, three form factors – sharing the same sensors, e-ink label and cloud platform.



## THE BOX

Foldable · 31 L · 6 kg

EPP/PP · IP54 · AFNOR certified



## THE BOX PRO

Rigid · up to 12 kg

Two sizes (M / S) for B2B



## THE TABLET

The connected module

Sensors & e-ink in one module

## Onboard sensor suite

GPS positioning of THE BOX

Shock & fall

Tilt

Temperature

Humidity

Light

Door open/close

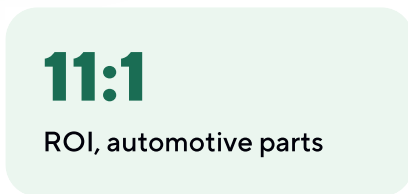
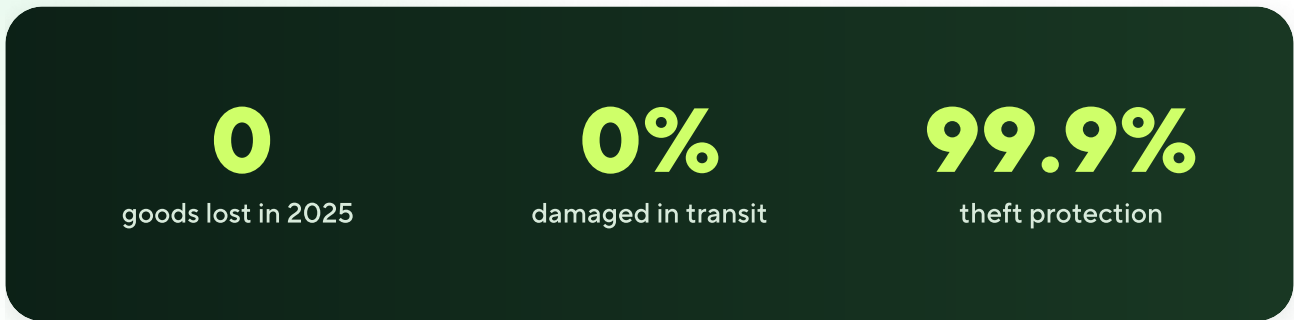
Electronic lock



Optional insurance services coming to customers in the future, so you will be able to insure every shipment directly from the platform.

# Proven in the field.

Across all customers in 2025 – luxury, electronics, industrial parts and telecom, B2B and D2C alike.



## What customers say

“  
We no longer need cardboard and rely entirely on our reusable boxes. The unboxing of our probe is the icing on the cake.  
— Brice Augras, CEO, BZHunt

“  
We no longer deal with broken parts – we gain time and avoid customer dissatisfaction. We'd recommend LivingPackets.  
— Alexandra Lucas, Purchasing Manager, Cotrolia

● Customer satisfaction averaged 4.9 / 5 across every deployment in 2025.

# Talk to us about THE BOX

Three ways to get started – for high-value shipments from US to Europe and back.

1

## See THE BOX in action.

Request a live demo and a sample shipment configured for your own flow → [livingpackets.com/the-box](https://livingpackets.com/the-box)

2

## Read the deployment stories.

Case studies across luxury, electronics, parts logistics and telecom → [livingpackets.com/case-studies](https://livingpackets.com/case-studies)

3

## Talk to a specialist.

A confidential conversation about your shipment profile, and a tailored quote → talk to an expert

