

B.

Garage Carpet

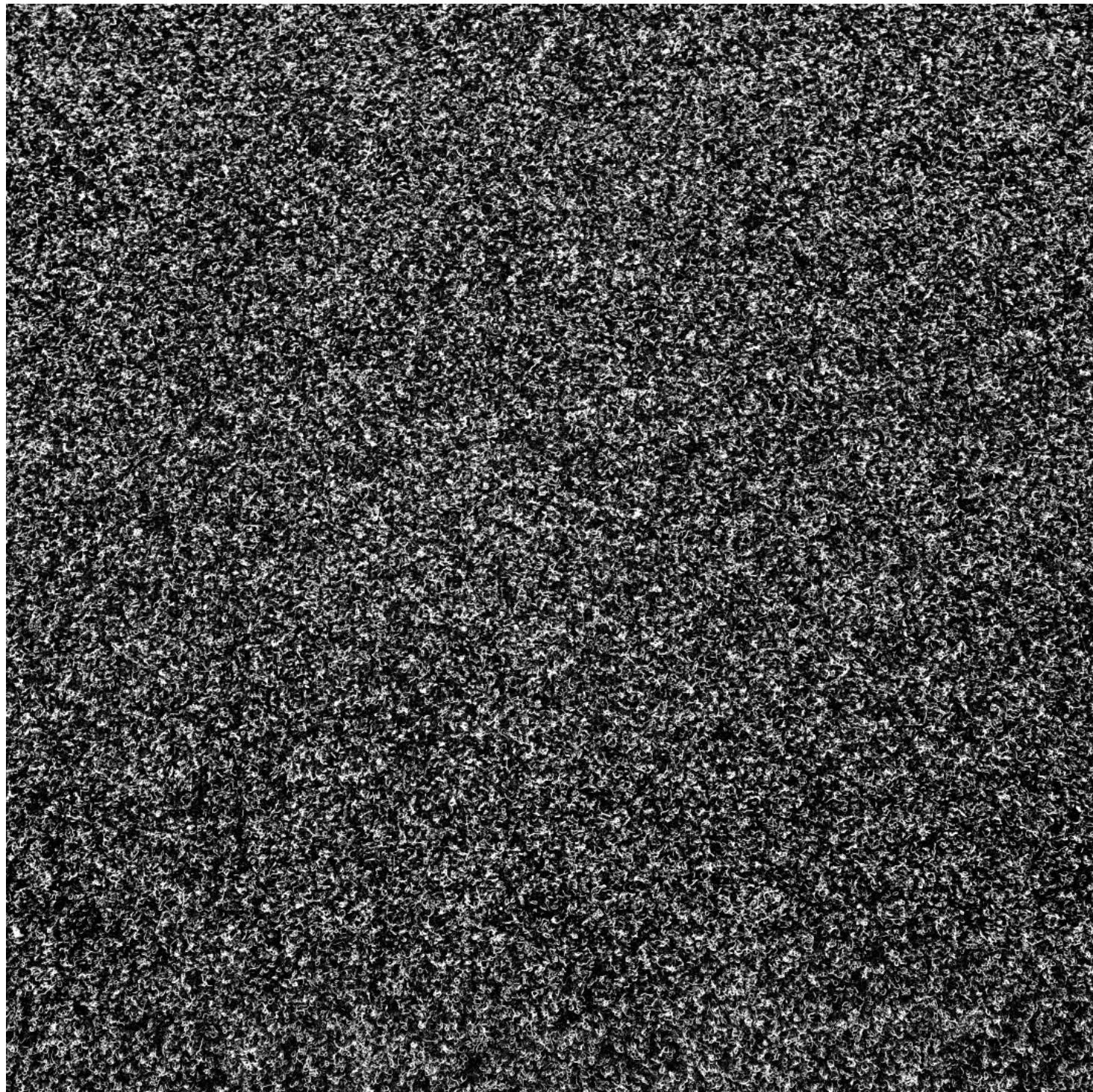
Garage Carpet is made specifically for residential spaces that require added strength with style, such as a home gym, office, or garage. Its structured needlepunch design and stain-resistant polypropylene yarns provide durability, comfort, and convenience. Its 4m width ensures easy installation and long-lasting appeal. It features a 1-year warranty, Green Tag certification, and is proudly manufactured in South Africa.

Extended Specifications

Use Classification: (EN 1307)	Medium Residential
Construction:	Structured Needlepunch
Product Description:	Medium Residential Structured Needlepunch
Recycled Content:	Face Fibre – Blend of Stainproof Miracle Fibre & Stainproof Miracle Fibre Eco - Certain Colours
Fibre Type:	Stainproof Miracle Fibre (Polypropylene)
Total Thickness: (ISO 8543)	±6.5 (mm) 0.255 (in)
Total Mass: (ISO 8543)	±800 (g/m²) 23.59 (oz/yd²)
Standard Width (Broadloom):	4 (m) 157.48 (in)
Standard Backing (Broadloom):	ResinBac
Warranty:	1 year



B.



Anthracite

Garage Carpet



Medium/General Residential



Broadloom



Eco-Friendly



Underfloor Heating



Suitable for Staircases



ANTIALLERGENIC



RESIN BAC



From Local & Imported Goods



REUSE
REDUCE
RECYCLE



COLOURFAST
MF
BLEACH RESISTANT



COLOURFAST
MF ECO
BLEACH RESISTANT



GREEN BUILDING COUNCIL SA
MEMBER ORGANISATION



GREEN TAG CERTIFIED
trust brands



bsi
ISO 9001
Quality Management Systems
CERTIFIED



bsi
ISO 14001
Environmental Management
CERTIFIED



bsi
ISO 45001
Occupational Health and Safety Management
CERTIFIED



RESIDENTIAL WARRANTY
1 YEAR

Bill of Quantities

- Belgotex GARAGE CARPET 4m width (ResinBac - broadloom) is manufactured from Stainproof Miracle Fibre (Polypropylene).
- This product is to be in accordance with the SANS 10186 fitting code of practice.
- Belgotex recommends the use of carpet protector mats where castor wheels are used.
- 1 year warranty.
- Made in South Africa.
- Green tag level A Gold rated certification.

Note: Belgotex offers customization of this product in colour. Please contact a Belgotex representative for more information.

Product characteristics may vary due to the nature of manufacturing. To combat colour variance do not install more than one dye lot in a single colour broadloom installation. When installing two or more different colours in broadloom then there is no issue mixing dye lots together.

*All product names and logos are trademarks of BELGOTEX FLOORCOVERINGS® (Pty) Ltd. © BELGOTEX FLOORCOVERINGS® (Pty) Ltd. All rights reserved. Warranty and guarantee to limitations and conditions. For details contact BELGOTEX FLOORCOVERINGS® (Pty) Ltd.