

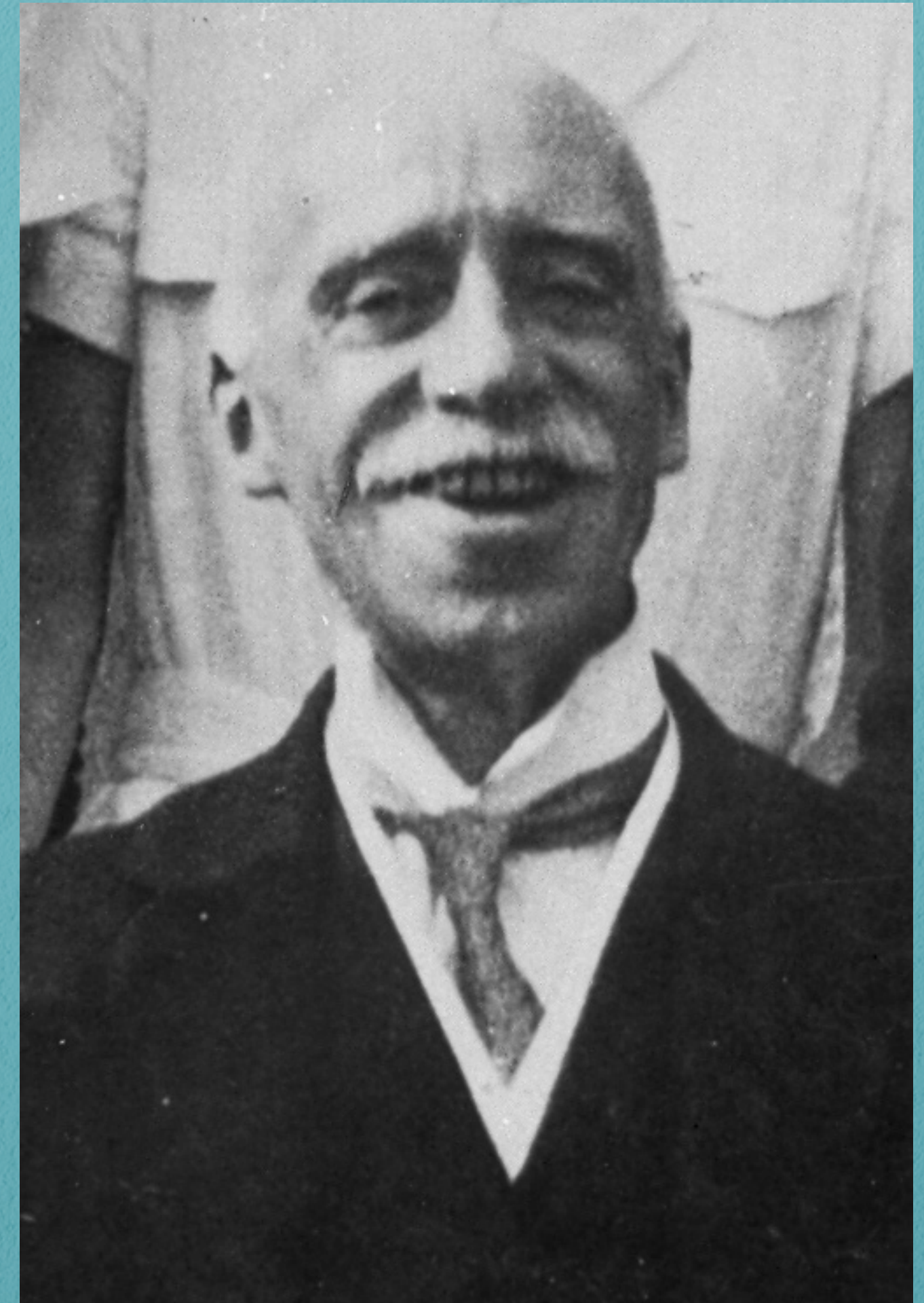
# JOIN OLIVER'S PEOPLE LEAVE A LEGACY

At Ivy Church, we are passionate about seeing lives transformed by the love of God the Father, the redeeming grace of Jesus Christ, and the continual presence and power of the Holy Spirit.

For over a century, a call to mission has been woven into the very fabric of Ivy Church. Starting with our Founder, Oliver Brockbank, the faithful generosity of our community has supported mission partners around the globe, built and renewed church spaces, and expanded local ministry across South Manchester.

The vast majority of our funding comes through the faithful regular giving of people like you who share our vision for growing supernatural communities that are all about Jesus. But few people have considered leaving a gift in their will that will be a lasting legacy for God's Kingdom into the future.

If you want to see God's work at Ivy Church continue to flourish beyond your time on this earth then read on.



# WHY LEAVE A LEGACY TO IVY CHURCH

Leaving a gift to Ivy Church in your will is a powerful way to express your faith, values, and gratitude to God — and to ensure that your legacy continues to bless others long after you're gone. Here are some compelling reasons why people choose to do it:

## A LASTING ACT OF FAITH

- **Affirm your beliefs:** It's a final, meaningful way to support the mission and ministry that shaped your spiritual journey and life of faith.
- **Worship through generosity:** Giving is a form of worship — a legacy gift reflects your trust in God's ongoing work.

## INVEST IN FUTURE GENERATIONS

- **Support youth and mission:** Your gift will help us continue to nurture young people, serve the vulnerable, and share the gospel.
- **Preserve our sacred spaces:** You can help maintain and improve the church buildings so they remain places of worship and celebration for the community.

## EXTEND GOD'S IMPACT GLOBALLY

- **Empower mission partners:** Your gift will enable us to continue to support mission partners and ministries in Manchester, the UK and around the world.
- **Advance social justice:** Our CAP Debt Centre, Ladybridge Connect and other ministries have all been instrumental in giving hope to our communities. Your gift will allow us to meet some of the deepest needs of our community into the future in innovative ways.



# WHY LEAVE A LEGACY TO IVY CHURCH

## STRENGTHEN YOUR LOCAL COMMUNITY

- **Grow local ministry:** Your gift can help plant new churches, expand pastoral care, and reach more people with the good news of Jesus.
- **Enable innovation:** We love to dream big — legacy gifts allow us to launch new projects and respond to emerging needs, to continue to make a Kingdom impact.

## PEACE OF MIND AND PURPOSE

- **Make your values visible:** Your will is a testimony to what mattered most to you.
- **Leave a legacy of hope:** Loved ones will see your gift as a sign of your enduring love for Jesus and desire to share his hope with others.

## WHO DO I SPEAK TO FOR FURTHER INFORMATION?

To chat with a member of our finance team about this further please email [finance@ivychurch.org](mailto:finance@ivychurch.org) and we will come back to you.



# FAQ'S

## **DO I NEED TO ENGAGE A SOLICITOR?**

Some people make a will at a significant milestone in their lives, such as having a child, moving house or because of illness. As a will is a legal document, we strongly recommend getting a solicitor's advice as you draw up your will, to make sure it is accurate and avoids mistakes. However, not seeking advice will not make a will invalid.

## **HOW MUCH WILL IT COST?**

This varies from one solicitor to another. During Free Wills Month in March and October, some solicitors offer their will-making services free in return for a donation to charity.

## **HOW CAN I FIND A SOLICITOR?**

There are many local solicitors around South Manchester which you can locate with an internet search. You can locate a Christian solicitor via the Lawyers' Christian Fellowship [www.lawcf.org](http://www.lawcf.org) or the Association of Christian Law Firms [www.aclf.org.uk](http://www.aclf.org.uk)

## **CAN I DECIDE WHERE MY LEGACY WILL BE SPENT?**

If you have a particular area of interest that you'd like to benefit, please contact [finance@ivychurch.org](mailto:finance@ivychurch.org) to discuss your intentions. We'll always try to accommodate people's wishes but sometimes leaving a gift to a specific project or country can cause difficulties in the future, especially if the project or mission initiative has concluded by the time the testator passes away. If you can let us know what you'd like to achieve through your gift, we'll do our utmost to help you.



## **I ALREADY HAVE A WILL. HOW DO I CHANGE MY WILL?**

If you have already made a will, then minor amendments can be made by using a codicil form. A legal professional can advise whether or not you should use a codicil and the drafting of it.

## **WHAT ARE THE TAX IMPLICATIONS OF GIFTS IN WILLS?**

All gifts to charities in wills are tax free. Gifts to Ivy Church and other charities are deducted from the value of your estate when inheritance tax is calculated.

## **SHOULD I CONSIDER GIVING A SHARE OF MY ESTATE RATHER THAN A LUMP SUM?**

While any gift in a legacy is hugely appreciated by the Church, giving a share of your estate rather than a lump sum protects that gift from future inflation. A gift of £10,000 today will be worth a lot less in 30 years, whereas a gift of 5 or 10% of your estate will hold its relative value. Dividing your estate into percentage shares also means you don't have to worry about re-writing your will, if for example, the actual amount diminishes through costs of retirement care.

For larger estates liable to inheritance tax, leaving 10% (or more) of your estate to charity will reduce your Inheritance Tax charge rate from 40% to 36%.

