



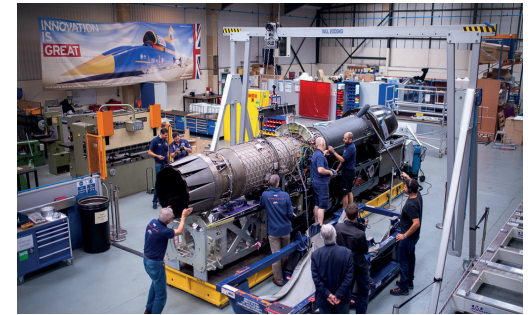
Gantry Systems

Innovative, convenient and easy to assemble, our two Gantry systems – the **PORTAGANTRY** and **PORTAGANTRY^{RAPIDE}** – effortlessly enable safe lifting to take place in a wide range of working environments.

12 **PORTAGANTRY**

20 **PORTAGANTRY** Load Baring Pneumatic Castor Model

24 **PORTAGANTRY^{RAPIDE}**



PORTAGANTRY®

Carrying WLL of up to
5000kg for goods lifting

Ease of height adjustment
with integrated ratchet

Ergonomic 360° swivel-
locking castors, as standard

Ease of assembly including
height and span adjustment

Engineered designs and bespoke
sections reduce weight, providing
lightweight portability

Approved for up to 5 persons
for fall protection applications

Stabiliser legs for ease of
transportation and stowage
of the A-frame

This product is patented

* Visit our website for our product assembly videos to find out how
easy our **PORTAGANTRY** range can be assembled in the field.

Our top quality and highly durable **PORTAGANTRY** is lightweight and extremely strong. This portable system can be manually assembled, using just four bolts and can safely lift up to 5000kg, making it the ideal system for multiple applications.

Key features

- EN795:2012 Certified
- ATEX Certified
- Can support goods and personnel lifting;
 - Goods WLL of up to 5000kg
 - Personnel WLL of up to 2500kg
- Suitable for up to 5 persons for fall protection applications
- Beams and A-Frames can be interchanged
- Ergonomic 360° swivel-locking castors, as standard
- Ease of assembly including height and span adjustment
- Anodised for increased corrosion resistance
- Engineered designs and bespoke sections reduce weight, providing lightweight portability

Configurations

The **PORTAGANTRY** is available in a range of configurations and can be customised in line with specific requirements (subject to WLL rating).

The **PORTAGANTRY** has the ability to be moved under load. (Subject to detailed instruction and supervision by a competent person).



**500-5000KG
WLL**



**1-4 PERSON
ASSEMBLY**



**92-294KG
FLAT PACK**



**EN795
CERTIFIED**



**ATEX
CERTIFIED**

➤ Features & Performance

	500	1000	2000	3000	5000
Accreditations, Certifications & Standards					
EN795:2012	✓	✓	✓	✓	✓
PD CEN / TS16415:2013	✓	✓	✓	✓	✓
ANSI Z359.18-17	✓	✓	✓	✓	✓
AS/NZS 5532:2013	✓	✓	✓	✓	✓
ATEX Certified [Zone 2]	✓	✓	✓	✓	✓
ATEX Certified [Zone 1]	Optional	Optional	Optional	Optional	✗
IRATA	✓	✓	✓	✓	✓
Capacity					
Maximum Goods Lifting [kg]	500	1000	2000	3000	5000
Maximum Personnel Lifting [kg]	250	500	1000	1500	2500
Fall Arrest [Persons]	3	3	5	5	5
Dimensions					
Minimum Height of Lift [mm]	1605	1605	1605	1660	2181
Maximum Height of Lift [mm]	5829	5829	5829	5527	5000
Minimum Available Span [mm]	2500	2500	2500	2500	2500
Maximum Available Span [mm]	9000	9000	8400	8400	5500
Trolley Options					
Standard	✓	✓	✓	✓	✓
Gated	✓	✓	✓	✓	✓
Close Coupled	✓	✓	✓	✓	✗
Gear Driven	✓	✓	✓	✗	✗
Integrated Hoist	✓	✓	✓	✗	✗
Standard Features					
Ratchet Height Adjustment	✓	✓	✓	✓	✓
Mechanical aid Assembly	✗	✗	✗	✗	✓
Optional Extras					
Lobed Cheek Plates	✓	✓	✓	✓	✓
Winch Upgrade	✓	✓	✓	✓	✓
Wind Up Jack legs	✓	✓	✓	✓	✓
Trolley Rope Control System	✓	✓	✓	✓	✓
Festoon System	✓	✓	✓	✓	✓
Jointed Beam	✓	✓	✗	✗	✗
Directional Lock Castors	✓	✓	✓	✓	✓
Shackled Cheek Plates	✓	✓	✓	✓	✓
Finishes					
Anodised	✓	✓	✓	✓	✓
316SS Fixings	Optional	Optional	Optional	Optional	Optional
Marine Spec	Optional	Optional	Optional	Optional	✗

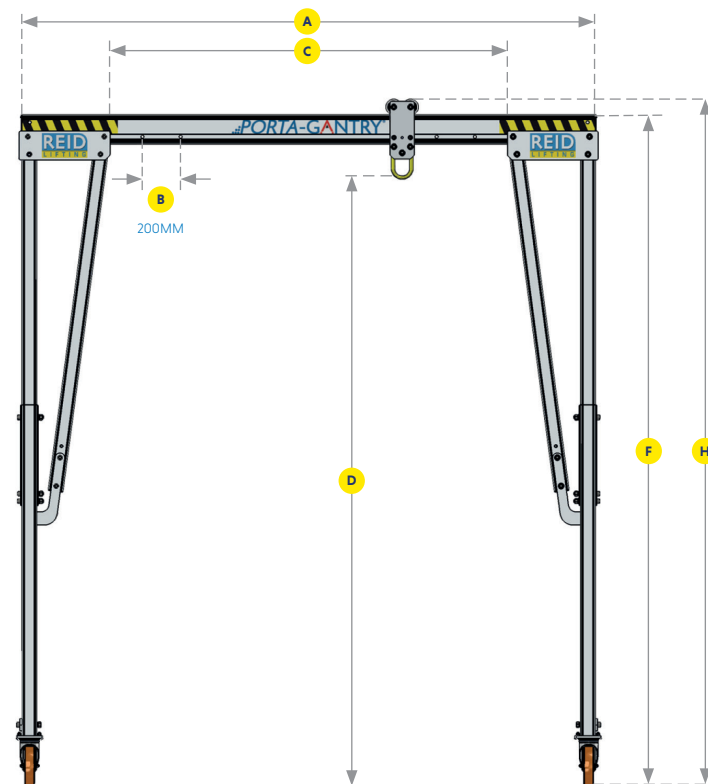
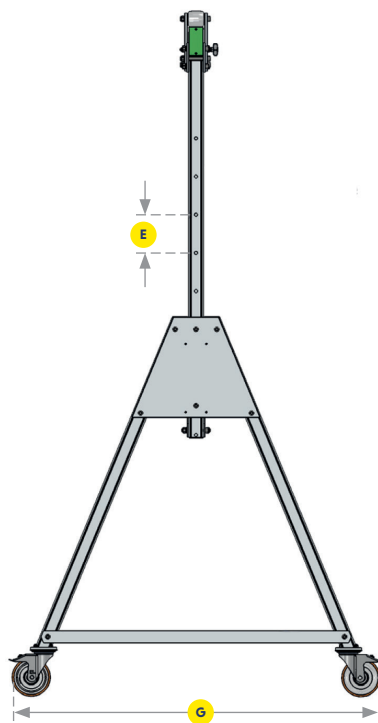
Dimensions in the table are approximate values. For more accurate details please refer to the Dimension Table.

All line items marked with a '✓' come as standard. All line items marked with a '✗' are not available.

All line items marked with 'optional' are available as an option and may incur additional costs.

PORTAGANTRY® 500-5000

- A** Beam length
- B** Beam adjustment
- C** Clear operating span
- D** Height to lifting eye
- E** Height increment
- F** Height to top of beam
- G** Width
- H** Height to top of roller



Standard Beam Dimensions

A [mm]	2500	3000	3920	4570	5500	6000	8400	9000
C _{min} [mm]	1180	1680	2200	2050	2980	3480	5880	6480
C _{max} [mm]	1580	2080	3000	3650	4580	5080	7480	8080

Weight of Beam [kg]

WLL	500kg	19	22	29	34	41	44	62	66
	1000kg	19	22	29	34	41	44	79	84
	2000kg	19	22	29	34	52	93*	130*	x
	3000kg	19	22	37	43	85*	93*	130*	x
	5000kg	39*	47*	61*	71*	85*	x	x	x



To ensure stability of the structure, the operating span of the beam must be equal to or greater than the distance between the castors on the A-frame

Clear operating span for A and B section beams is **C = A - 920mm**.
*Clear operating span for D section beams is **C = A - 910mm**.

Gantry Dimensions [mm]

	WLL [kg]	Frame size [Product Code]	DMax	E	DMin	FMax	HMax	HMin	G	A-Frame weight (kg) (approx)	Trolley roller size	Castor Diam
			Height to lifting eye	Height increment	Height to lifting eye	Height to top of beam	Height to top of roller	Height to top of roller	Width			
	500kg	PGAS00500S	2345	5 x 150	1595	2675	2757	2007	1212	32	82	150
		PGAS00500M	2841	5 x 150	2091	3171	3253	2503	1429	42	82	150
		PGAS00500I	3178	5 x 200	2178	3499	3581	2581	1726	50	82	200
		PGAS00500T	4069	6 x 200	2869	4399	4481	3281	2011	56	82	200
		PGAS00500TC4	4517	6 x 200	3317	4847	4930	3730	2234	86	82	200
		PGAS00500TC3	5017	6 x 200	3817	5347	5430	4230	2557	91	82	200
		PGAS00500TC2	5517	8 x 200	3917	5848	5930	4330	2733	97	82	200
		PGAS00500TC1	5819	9 x 200	4019	6149	6231	4431	2733	102	82	200
	1000kg	PGAS01000S	2345	5 x 150	1595	2675	2757	2007	1212	32	82	150
		PGAS01000M	2841	5 x 150	2091	3171	3253	2503	1429	42	82	150
		PGAS01000I	3178	5 x 200	2178	3499	3581	2581	1726	50	82	200
		PGAS01000T	4069	6 x 200	2869	4399	4481	3281	2011	56	82	200
		PGAS01000TC4	4517	6 x 200	3317	4847	4930	3730	2234	86	82	200
		PGAS01000TC3	5017	6 x 200	3817	5347	5430	4230	2557	91	82	200
		PGAS01000TC2	5517	8 x 200	3917	5848	5930	4330	2733	97	82	200
		PGAS01000TC1	5819	9 x 200	4019	6149	6231	4431	2733	102	82	200
	2000kg	PGAS02000S	2345	5 x 150	1595	2675	2757	2007	1212	35	82	150
		PGAS02000M	2841	5 x 150	2091	3171	3253	2503	1429	42	82	150
		PGAS02000I	3178	5 x 200	2178	3499	3581	2581	1726	50	82	200
		PGAS02000T	4069	6 x 200	2869	4399	4481	3281	2011	56	82	200
		PGAS02000TC4	4517	6 x 200	3317	4847	4930	3730	2234	86	82	200
		PGAS02000TC3	5017	6 x 200	3817	5347	5430	4230	2557	91	82	200
		PGAS02000TC2	5517	8 x 200	3917	5848	5930	4330	2733	97	82	200
		PGAS02000TC1	5819	9 x 200	4019	6149	6231	4431	2733	102	82	200
	3000kg	PGAS03000S	2400	5 x 150	1650	2730	2812	2062	1212	56	82	200
		PGAS03000M	2896	5 x 150	2146	3226	3308	2558	1429	61	82	200
		PGAS03000I	3178	5 x 200	2178	3499	3581	2581	1726	73	82	200
		PGAS03000T	4069	6 x 200	2869	4399	4481	3281	2021	85	82	200
		PGAS03000TC4	4517	6 x 200	3317	4847	4930	3730	2234	86	82	200
		PGAS03000TC3	5017	6 x 200	3817	5347	5430	4230	2557	91	82	200
		PGAS03000TC2	5517	8 x 200	3917	5848	5930	4330	2733	97	82	200
		PGAS03000TC1	5819	9 x 200	4019	6149	6231	4431	2733	102	82	200
	5000kg	PGAS05000IR	3181	5 x 200	2181	3592	3717	2717	1736	99*	125	200
		PGAS05000TR	4049	6 x 200	2849	4487	4612	3412	2021	109*	125	200
		PGAS05000TC4R	4500	6 x 200	3300	4938	5062	3862	2234	96	125	200
		PGAS05000TC3R	5000	6 x 200	3800	5438	5562	4362	2557	101	125	200

S & M versions also available as custom systems | WLL 5000kg dimensions systems are shown using the deeper 'D' section beam
Dimensions use standard Master Link Trolley, other options available to increase resulting height of lift (HoL) and to assist with load movement. *Weight includes stabiliser legs.

PORTAGANTRY Trolley Options

➤ Gated Trolley [Patented]

Our Gated Trolley is expertly designed to incorporate a rotating plate and quick release pin for easy and rapid attachment to the beam. This unique and innovative product enables multiple trolleys to be attached to beam after the Gantry has been fully assembled and can also be locked in position on the beam.

➤ Gear Driven Trolley

The Gear Driven Trolley is fed on to the end of the beam during the assembly of the Gantry. It is designed to enable a load up to 2000kg to be moved safely along the beam in a controlled manner once lifted. Different chain lengths are available.

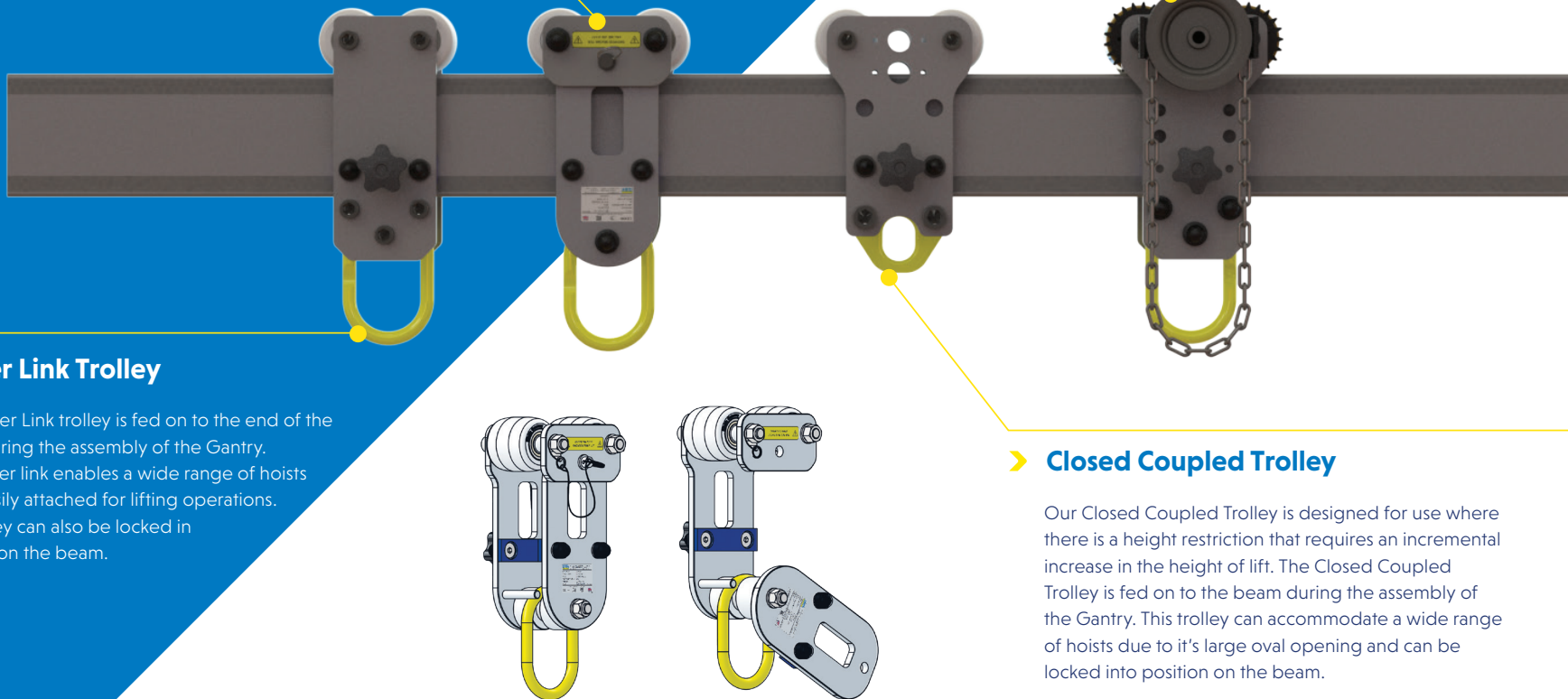
➤ Master Link Trolley

The Master Link trolley is fed on to the end of the beam during the assembly of the Gantry. The master link enables a wide range of hoists to be easily attached for lifting operations. The trolley can also be locked in position on the beam.

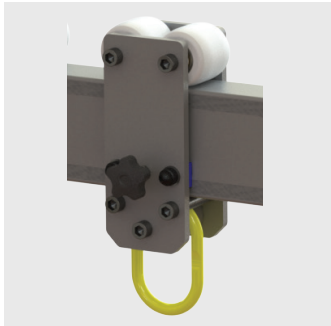
➤ Closed Coupled Trolley

Our Closed Coupled Trolley is designed for use where there is a height restriction that requires an incremental increase in the height of lift. The Closed Coupled Trolley is fed on to the beam during the assembly of the Gantry. This trolley can accommodate a wide range of hoists due to its large oval opening and can be locked into position on the beam.

* The Gated Trolley is tested to and meets the requirements of EN795.2012 and IRATA ICOP for fall protection applications. Each trolley is rated 2500kg for this purpose.



> Master Link Trolley



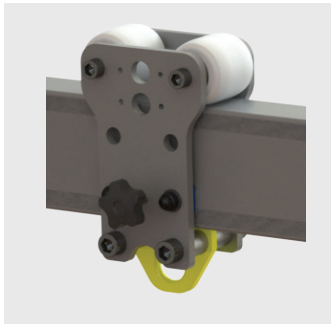
Product Code	Description
PGTZO0500	Master Link Trolley rated up to 500kg to Fit A or B Size Beam
PGTZO1000	Master Link Trolley rated up to 1000kg to Fit A or B Size Beam
PGTZO2000	Master Link Trolley rated up to 2000kg to Fit A or B Size Beam
PGTZO3000	Master Link Trolley rated up to 3000kg to Fit A or B Size Beam
PGTZL02000	Master Link Trolley rated up to 2000kg to Fit D Size Beam
PGTZL03000	Master Link Trolley rated up to 3000kg to Fit D Size Beam
PGTZL05000	Master Link Trolley rated up to 5000kg to Fit D Size Beam

> Gated Trolley



Product Code	Description
PGTGS00500	Gated Master link Trolley rated up to 500kg to Fit A or B Size Beam
PGTGS01000	Gated Master link Trolley rated up to 1000kg to Fit A or B Size Beam
PGTGS02000	Gated Master link Trolley rated up to 2000kg to Fit A or B Size Beam
PGTGS03000	Gated Master link Trolley rated up to 3000kg to Fit A or B Size Beam

> Closed Coupled Trolley



Product Code	Description
PGTXS02000V2	Close Coupled Trolley rated up to 2000kg to Fit A or B Size Beam
PGTXS03000V2	Close Coupled Trolley rated up to 3000kg to Fit A or B Size Beam
PGTXL03000V2	Close Coupled Trolley rated up to 3000kg to Fit D Size Beam
PGTXL05000V2	Close Coupled Trolley rated up to 5000kg to Fit D Size Beam

> Gear Driven Trolley



Product Code	Description
PGTYS00500	Gear Driven Trolley rated up to 500kg to Fit A or B Size Beam
PGTYS01000	Gear Driven Trolley rated up to 1000kg to Fit A or B Size Beam
PGTYL02000	Gear Driven Trolley rated up to 2000kg to Fit D Size Beam

* We offer a range of Geared and Integrated Hoist trollies for more information contact your REID representative.



Gantry Assembly Aid

The Gantry Assembly Aid has been designed to aid in the ease of erecting and dismantling our **PORTAGANTRY** systems. It is ideally suited to our intermediate and above-height gantries. The Assembly Aid reduces installation time, as well as manual handling requirements.

Product Code	Description
RAPG000200	Assembly Aid Only
RAPG000200 RAPG000201	Snap Hook Strop Kit for Intermediate and Tall Gantry Systems Assembly Aid
RAPG000200 RAPG000202	Snap Hook Strop Kit for TC4 and TC3 Gantry Systems Assembly Aid
RAPG000200 RAPG000203	Snap Hook Strop Kit for TC2 and TC1 Gantry Systems Assembly Aid
RAPG000203	Bag for Assembly Aid Kit



Directional Lock Castors

Our Directional Lock Castors allow for our swivel castors to be made into a fixed castor temporarily - by locking the swivel head but not the wheel which means the castor moves in one direction. Directional locking castors are great for cornering or pivoting.

Product Code	Description
RSCA000008	Porta Gantry Directional Lock Castors - up to 3000kg [Set of 1]
RSCA000010	Porta Gantry Directional Lock Castors - up to 5000kg [Set of 1]



Trolley Rope Control System

Our Rope Control System allows precise control over the movement of the load trolley from a safe location next to the A-frame. By utilising a series of sheaves and a winch a mechanical advantage is added to the system reducing the effort during operations. This system not only adds a method of controlled movement of the load but also removes the need to manually handle the lifted load increasing the safety of the system.

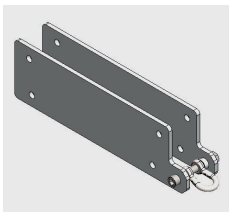
Product Code	Description
PGRC00001	Rope Control System for use with PG Small with A or B section beam
PGRC00002	Rope Control System for use with PG Small with D section beam
PGRC00003	Rope Control System for use with PG Intermediate with A or B section beam
PGRC00004	Rope Control System for use with PG Intermediate with D section beam
PGRC00005	Rope Control System for use with PG Tall with A or B section beam
PGRC00006	Rope Control System for use with PG Tall with D section beam



Wind-up Jack Legs

Our Wind-up Jack Legs offer infinite additional height adjustment up to 250mm. The Wind-up Jack Legs offer independent adjustment for use as a levelling system on uneven ground. The Jack Leg retracts beyond the base of the castors and so does not restrict the movement of the system.

Product Code	Description
PGWS00001U	Porta Gantry Universal Wind Up Jack Leg WLL5000kg Set of 4
PGWS00002U	Porta Gantry Universal Wind Up Jack Leg S&M up to 2000kg Set of 4



> Shackled Cheek Plates

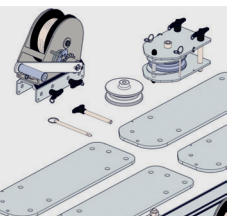
The shackled cheek plate has an integrated shackle pull point which allows for the attachment of a mechanical aid such as a chain hoist to control the movement of a loaded trolley along the beam. By utilising a chain hoist to connect the trolley to the shackle the effort required to move a load during a lifting operation will be significantly reduced. This enables controlled movement of a load and ensures gantry stability when traversing a load along a beam.

Product Code

Description

RAPG000109

Porta Gantry Cheek Plate & Shackle Pull Point Kit



> Winch Conversion Kit

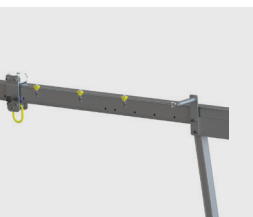
Our Winch Conversion Kit enables the **PORTAGANTRY** to be used with a wide range of winches or SRLs suitable for goods or personnel lifting. The kit comes with new cheek plates and a winch mounting column to allow for our gantry beams to be prepared to accept a sheave carrier and A-frames a wide range of winches.

Product Code

Description

RAPG000077

Porta Gantry A-frame Conversion Winch Ready Kit



> Festoon System

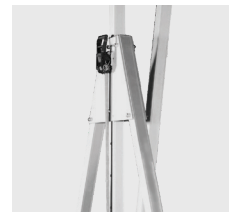
Our Festoon System has been designed to keep electric hoist power cords safely away from lifting operations and stored neatly along the gantry beam. The Universal Festoon Kit includes all the required components including; trolleys, wire rope and fasteners. By then adding the power cable the system is ready for use.

Product Code

Description

RAPG000004

Porta Gantry Festoon System and Brackets only [Advise Beam Length]



> Ratchet Height Adjustment

Our Ratchet Height Adjustment provides a mechanical aid for raising and lowering the height of the Gantry beam. The Ratchet Height Adjustment comes as a standard features on a range of A-frames and can be added as a feature on our entire **PORTAGANTRY** product range. See details in dimensions table.

Product Code

Description

RSPG000002

Porta Gantry Tall Ratchet Kit

RSPG000026

Porta Gantry Intermediate Ratchet Kit



> Lobed Cheek Plates

Our Lobed Cheek Plates allow for ease of assembly when adjusting the operating span of the **PORTAGANTRY** system. The modified cheek plates allows the clear operating span to be adjusted by moving one frame in, whilst still allowing the standard assembly methods to be observed.

Product Code

Description

RSPG000035

Porta Gantry Lobed Cheek Plate up to 5000kg [Each]

PORTAGANTRY®

Load Bearing Pneumatic Castor Model

Integrated shackled
Cheek Plates for lateral
load traversal

Easy height adjustment with
integrated ratchet system

Air-filled tyres with directional
lock and integrated brakes

Swivel castor assembly legs
for easy scissor assembly

Integrated assembly
aid shackle points



**Specified for
rough terrain**

This product is patented

Our **PORTAGANTRY**® featuring load bearing Pneumatic Castors with air filled tyres offers a quality solution for customers that need to set up and locate their lifting solution on rough terrain, or on roof tops where a standard castor may otherwise cause damage to the surface material. Additionally, the gantry permits movement under load in many scenarios which is made possible by high quality directional locking castors and overall robust gantry design.

Key features

- Directional locking dual wheel castors with integrated brakes
- Tyres are air filled
- Integrated lifting points and wheel on the frames to support safe raise and lower of the gantry with mechanical advantage
- Integrated shackled cheek plates to enable safe load traversing along the beam
- Integrated ratchet raise and lower system for height adjustment
- Height adjustments at 100mm (4") increments
- Beam adjustment points to enable adjustment of the span to suit site conditions
- Ability to be able to interchange frames for maximum utilisation and freedom to achieve even the most challenging of lifting tasks

Configurations

The **PORTAGANTRY**™ featuring load bearing Pneumatic Castors is available in a range of configurations and can be customised in line with specific requirements (subject to WLL rating).

The **PORTAGANTRY**™ featuring load bearing Pneumatic Castors has the ability to be moved under load. (Subject to detailed instruction and supervision by a competent person).



**2000-3000KG
WLL**



**1-4 PERSON
ASSEMBLY**



**92-294KG
FLAT PACK**

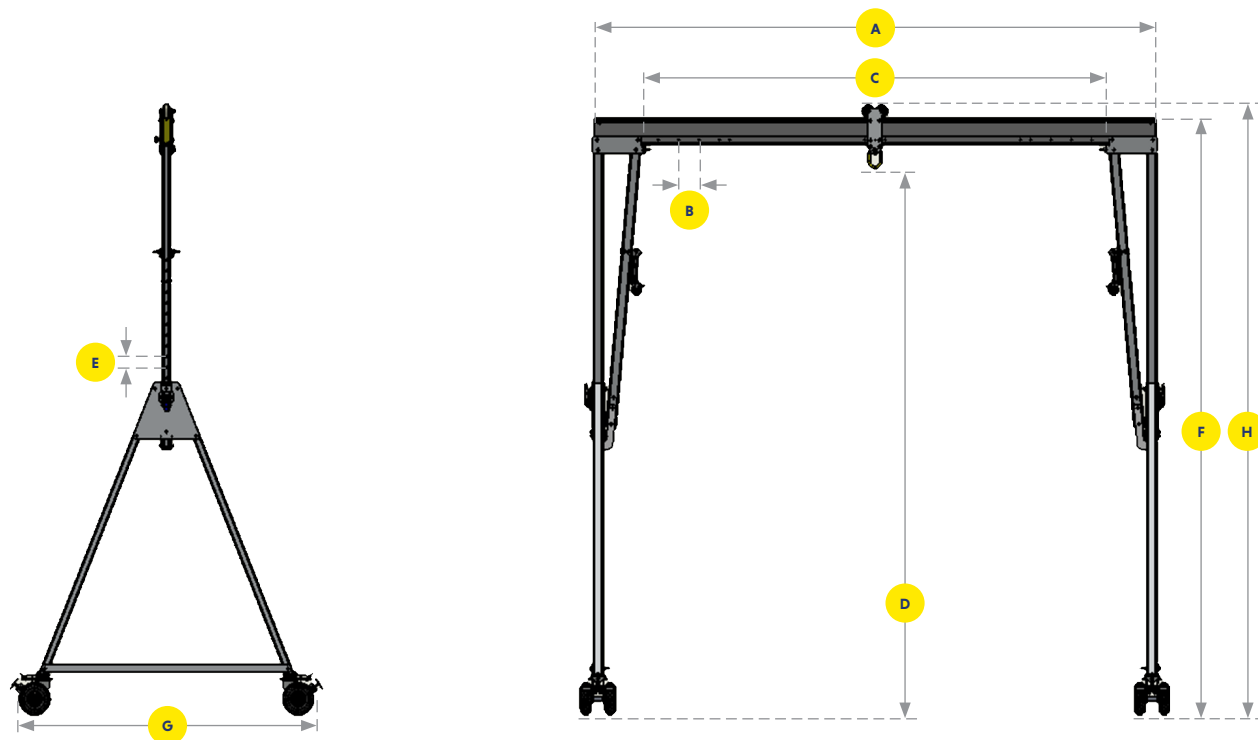
The above features are incorporated in order to ensure maximum utilisation potential of this hybrid gantry solution and therefore maximise return on investment for the user.
The gantry will not be rated as a fall protection product and is for material lifting only. For this reason castors cannot be retro-fitted to existing gantry frames.

➤ Features & Performance

	2000	3000
Capacity		
Maximum Goods Lifting [kg]	2000	3000
Dimensions		
Minimum Height of Lift [mm]	2307	2307
Maximum Height of Lift [mm]	5916	5648
Minimum working Span [mm]	2090	2090
Maximum working Span [mm]	7370	7370
Trolley Options		
Standard	✓	✓
Gated	✓	✓
Close Coupled	✓	✓
Integrated Hoist	✓	✗
Standard Features		
Ratchet Height Adjustment	✓	✓
Mechanical aid Assembly	✓	✓
Shackled cheek plate	✓	✓
Additional height adjustment	✓	✓
Finishes		
Anodised	✓	✓
316SS Fixings	Optional	Optional

Dimensions in the table are approximate values. For more accurate details please refer to the Dimension Table.
All line items marked with a '✓' come as standard. All line items marked with a '✗' are not available.
All line items marked with 'optional' are available as an option and may incur additional costs.

- A** Beam length
- B** Beam adjustment
- C** Clear operating span
- D** Height to lifting eye
- E** Height increment
- F** Height to top of beam
- G** Width
- H** Height to top of roller



Standard Beam Dimensions

A [mm]	3000	3920	4570	5500	6000	8400
C _{min} [mm]	1570	2090	1940	2870	3370	5770
C _{max} [mm]	1970	2890	3540	4470	4970	7370

Weight of Beams [kg]

WLL [kg]	2000	22	29	34	52	93	130
	3000	22	37	43	85	93	130



To ensure stability of the structure, the operating span of the beam must be equal to or greater than the distance between the castors on the A-frame

Clear operating span for A and B section beams is **C = A - 920mm**.
*Clear operating span for D section beams is **C = A - 910mm**.

Frame Dimensions [mm]

Frame size [Product Code]	D _{max}	E	D _{min}	F _{max}	H _{max}	H _{min}	G	A frame weight (KG)	Trolley roller size	Castor dimension
	Height to lifting eye	Height increment	Height to lifting eye	Height to top of the beam	Height to top of the roller	Height to top of the roller	Width			
PGAS02000I-PN	3307	10 x 100	2307	3637	3719	2719	2032	94	82	315
PGAS02000TC1-PN	5916	18 x 100	4116	6278	6360	4560	3027	146	82	315
PGAS02000TC3-PN	5113	12 x 100	3913	5476	5558	4358	2851	135	82	315
PGAS02000T-PN	4198	12 x 100	2998	4528	4610	3410	2317	100	82	315
PGAS03000I-PN	3307	12 x 100	2307	3637	3719	2719	2032	117	82	315
PGAS03000TC2-PN	5648	16 x 100	4048	5978	6060	4460	3027	141	82	315
PGAS03000TC3-PN	5113	12 x 100	3913	5476	5558	4358	2851	135	82	315
PGAS03000T-PN	4198	12 x 100	2998	4525	4607	3407	2315	129	82	315

Dimensions use standard Master Link Trolley, other options available to increase resulting height of lift (HoL) and to assist with load movement.

Key Features



Pneumatic Castors with air filled tyres and swivel lock



Integrated shackled cheek plates



100mm ratchet height adjustment



Integrated assembly assist