



**AKASH**  
HOMES

# GLENCOE II



## FLOOR PLAN

### House Style

2 Storey

### House Type

Single-Family

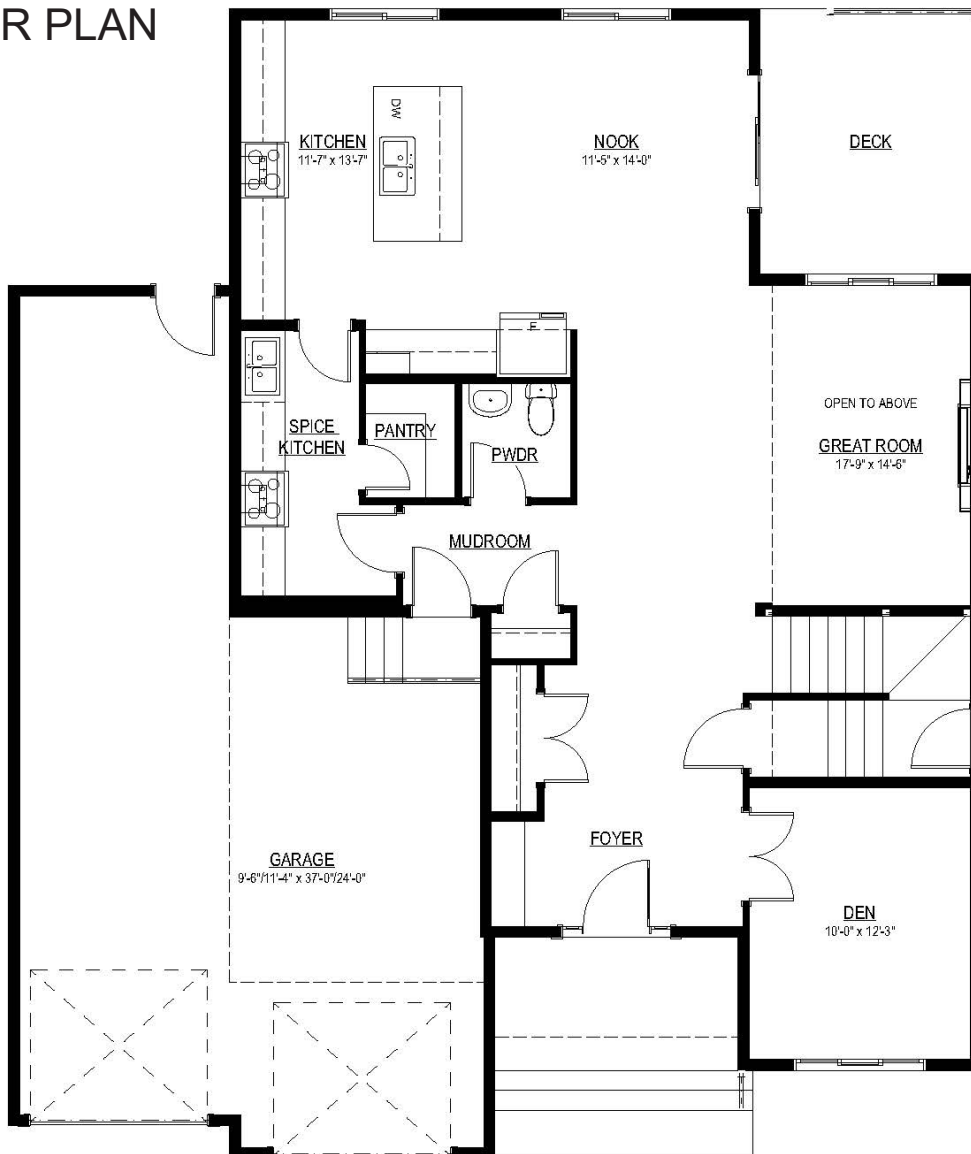
### Square Feet

2300-2400 Sq Ft

## FEATURES

- 9' Ceilings on the Main Floor
- Waterfall Quartz Island
- Cabinets to the Ceiling
- Spice Kitchen
- Triple Attached Tandem Garage
- Open to Above Great Room

## MAIN FLOOR PLAN



For marketing use only. Rendering is an artistic and marketing concept only. Dimensions and layouts shown are approximate and may change with lot size and per builder discretion. Akash Homes Ltd. and its affiliates cannot be held responsible for any changes or deviations from the above. All rights reserved. E & O.E.



**AKASH**  
HOMES

# GLENCOE II



## FLOOR PLAN

### House Style

2 Storey

### House Type

Single-Family

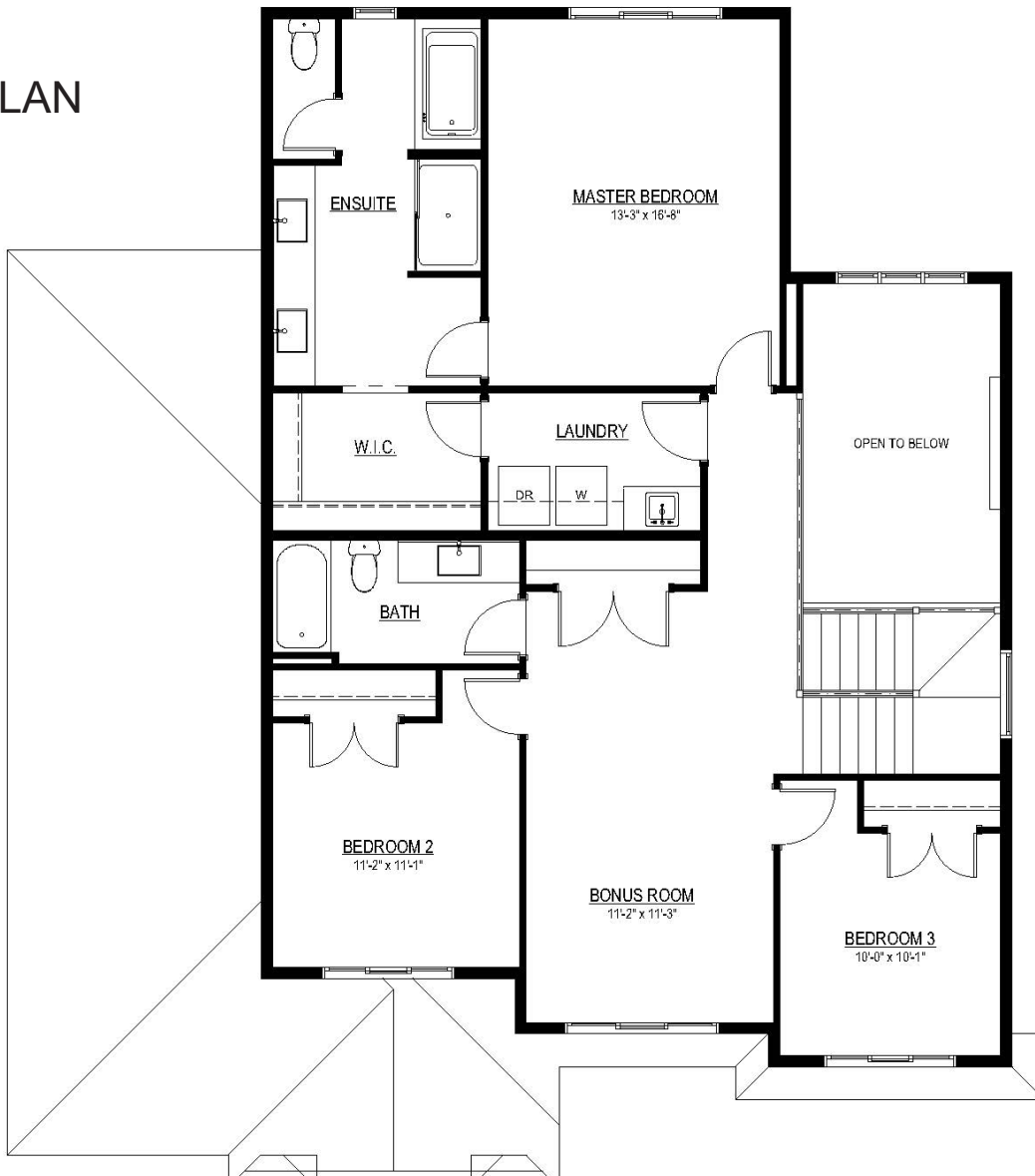
### Square Feet

2300-2400 Sq Ft

## FEATURES

- 9' Ceilings on the Main Floor
- Waterfall Quartz Island
- Cabinets to the Ceiling
- Spice Kitchen
- Triple Attached Tandem Garage
- Open to Above Great Room

## SECOND FLOOR PLAN



For marketing use only. Rendering is an artistic and marketing concept only. Dimensions and layouts shown are approximate and may change with lot size and per builder discretion. Akash Homes Ltd. and its affiliates cannot be held responsible for any changes or deviations from the above. All rights reserved. E & O.E.



**AKASH**  
HOMES

# GLENCOE II



## FLOOR PLAN

### House Style

2 Storey

### House Type

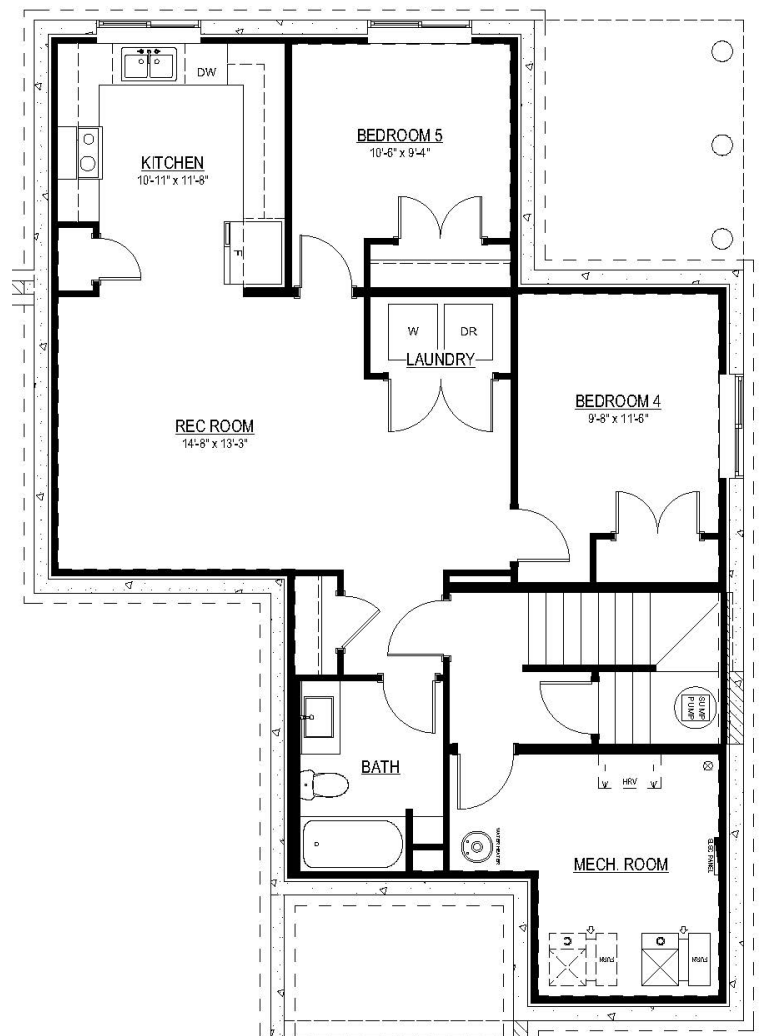
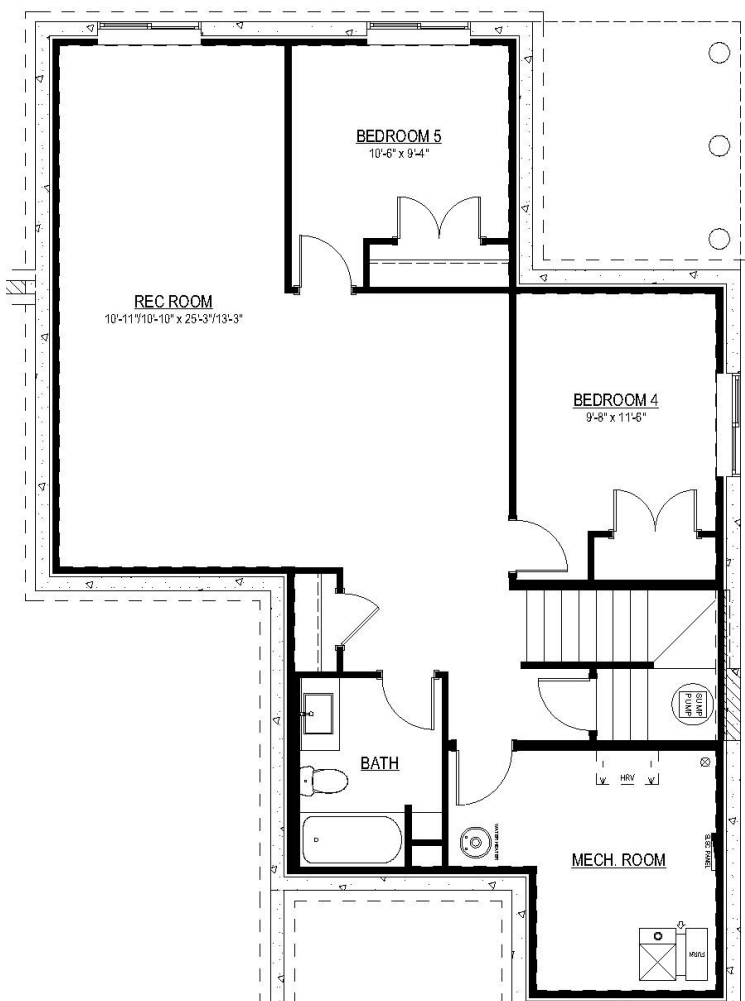
Single-Family

### Square Feet

2300-2400 Sq Ft

## FEATURES

- 9' Ceilings on the Main Floor
- Waterfall Quartz Island
- Cabinets to the Ceiling
- Spice Kitchen
- Triple Attached Tandem Garage
- Open to Above Great Room



## BASEMENT FLOOR PLAN

For marketing use only. Rendering is an artistic and marketing concept only. Dimensions and layouts shown are approximate and may change with lot size and per builder discretion. Akash Homes Ltd. and its affiliates cannot be held responsible for any changes or deviations from the above. All rights reserved. E & O.E.