

BUSINESS AT THE EDGE

What do IT leaders really think of edge computing?

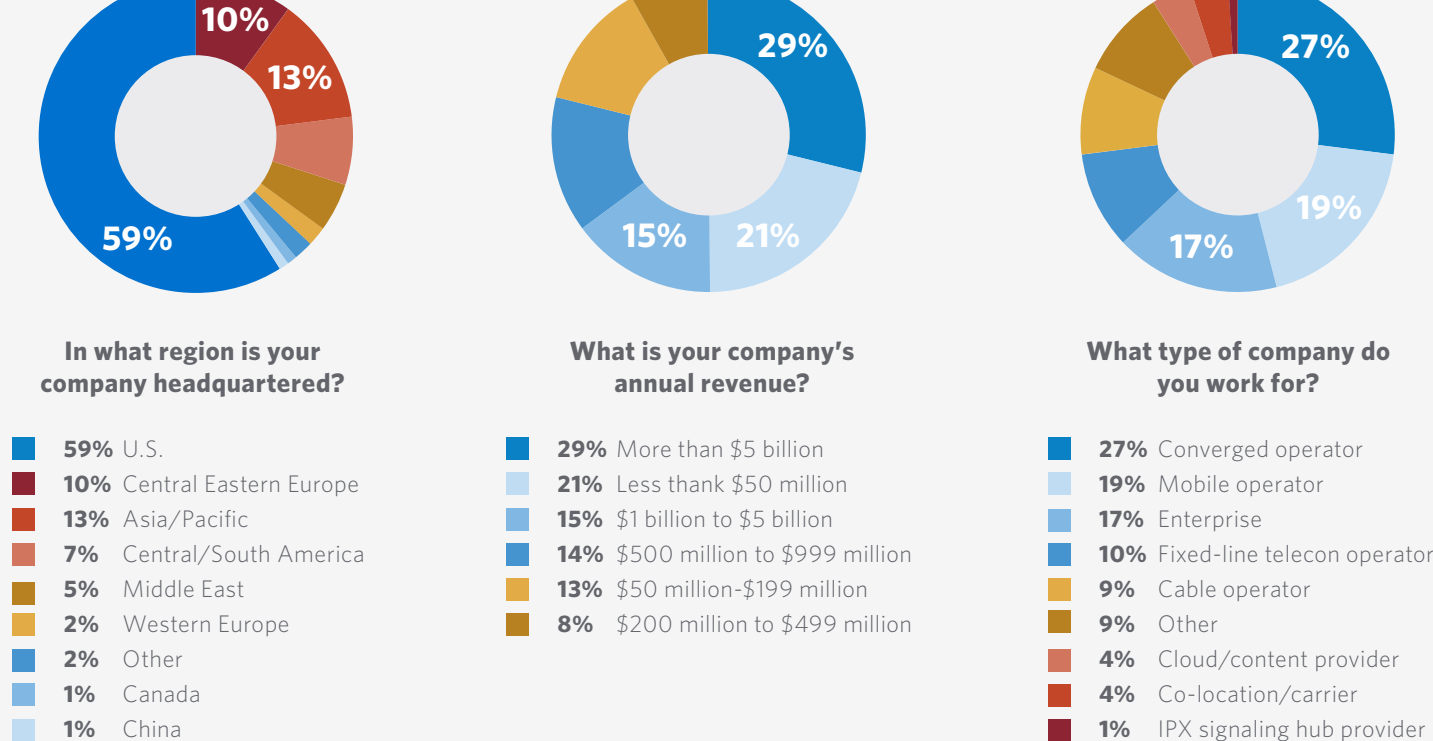
Edge computing is a business driver

Edge computing is at the top of mind for business leaders because it allows data to be processed and analyzed in real time near the source of data. How will edge computing impact business as we move into a new year?

CoreSite, in partnership with Arista, Fujitsu, and Infinera, sponsored a survey of IT leaders to gather their thoughts and opinions about edge computing as a business enabler. Surveys were conducted by Heavy Reading in June and July of 2019. Read the key results and analysis below.

Who's talking about edge computing?

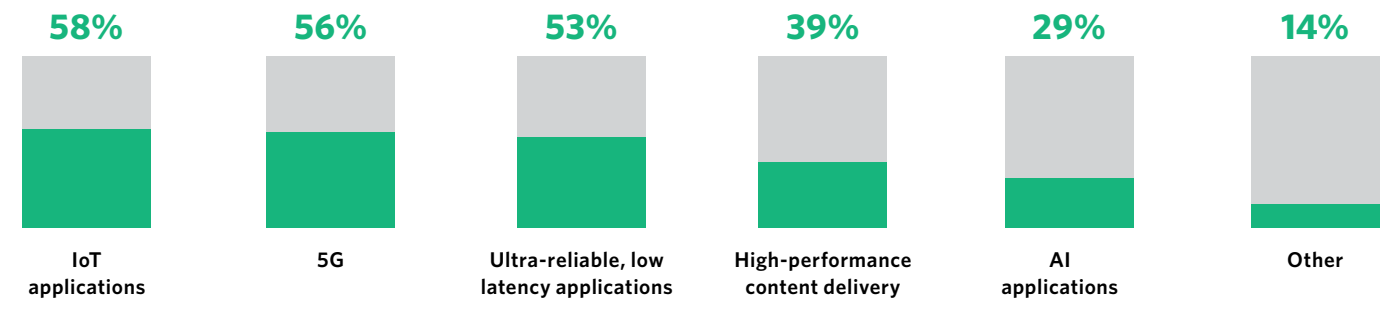
Companies of all sizes — especially large enterprises — around the world are focusing more attention on edge computing than ever.



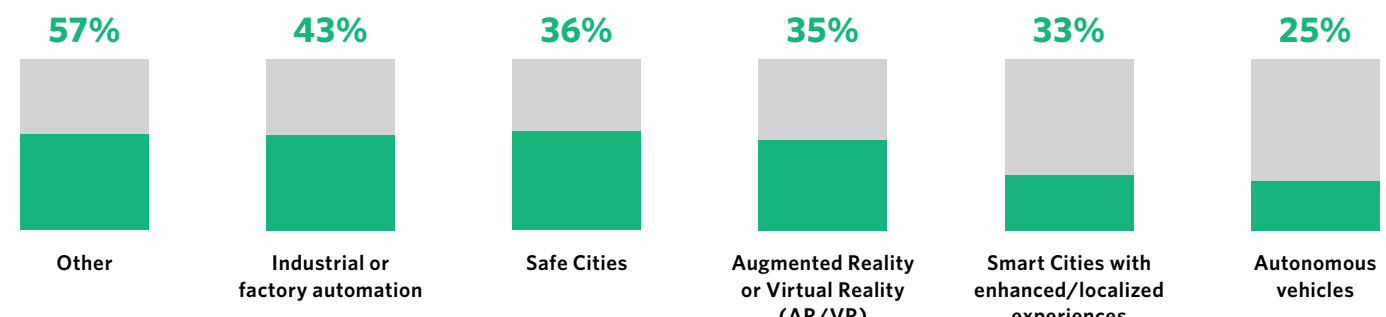
How will edge computing be used in enterprise IT?

Enterprise IT leaders say edge computing will feature prominently in powering cutting-edge applications that require fast, reliable connectivity.

What are the leading use case / business drivers for edge computing?



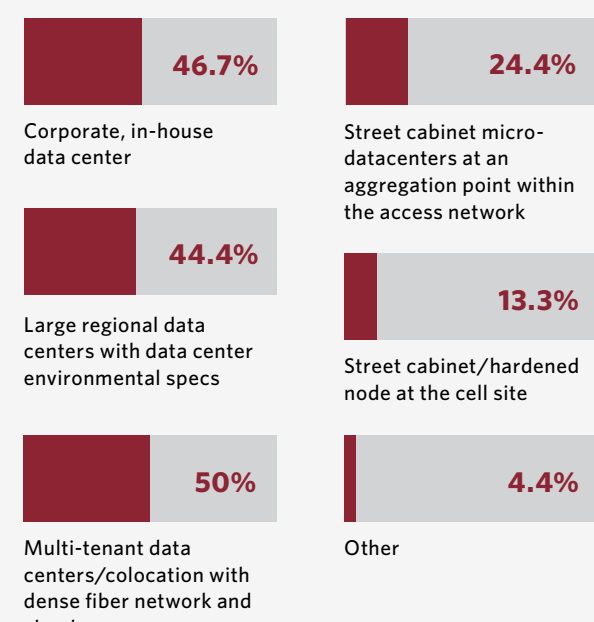
Which end-user applications are the most likely to drive the initial deployment of edge computing?



Importance of hyperconnected, secure data centers

Strategically located data centers are vital to a successful edge computing strategy, but they must be secure and provide flexibility and adaptability.

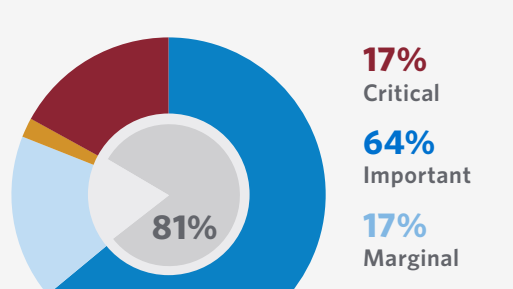
Where will your initial edge computing deployments be installed?



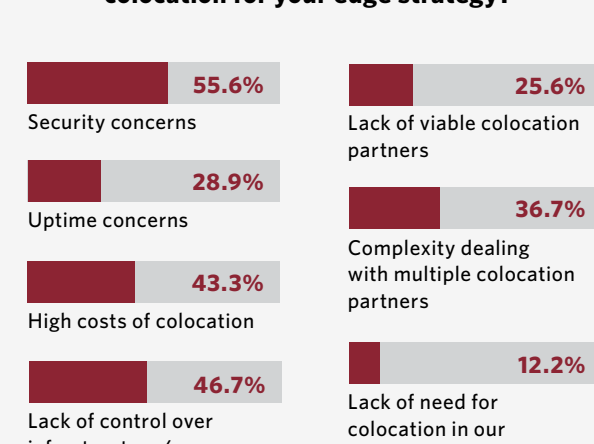
94% of enterprise IT leaders expect to deploy edge computing in large regional or multi-tenant data centers to supplement corporate-owned data centers

81% of enterprises say network-dense data centers are critical or very important to the success of their edge strategy

How important is network-dense, data center colocation to your edge strategy?



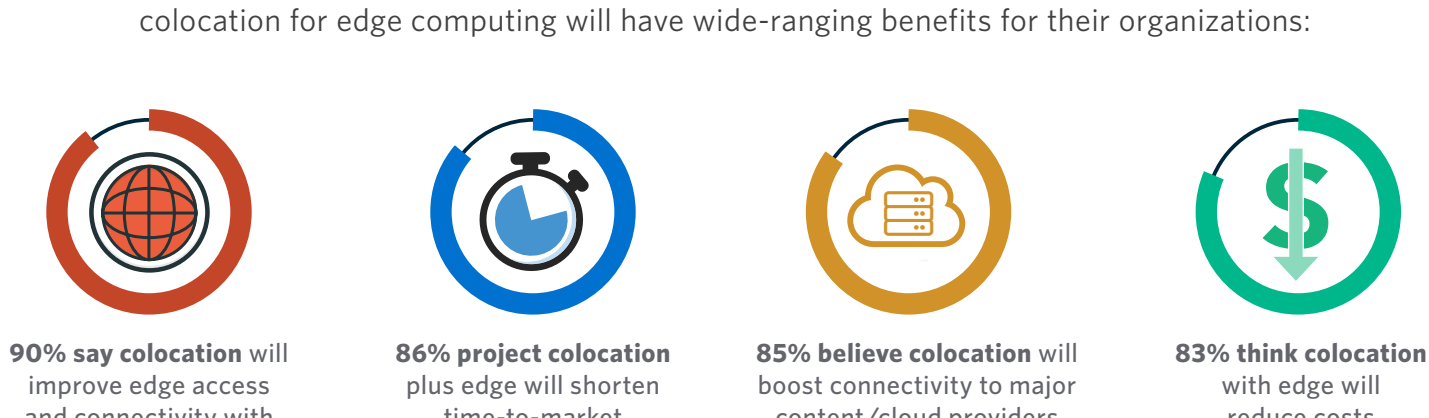
What are the primary inhibitors to using colocation for your edge strategy?



55% of IT pros believe data security is the most important aspect to consider in an edge initiative

Smart planning and smart technology deliver big benefits

With the right guidance, planning and tools edge computing can be a transformative strategy for digitally-enabled businesses. IT and business leaders predict that colocation for edge computing will have wide-ranging benefits for their organizations:



[Click here to read the full report.](#)

Learn more about how CoreSite's strategically located, hyperconnected data centers enable edge computing strategies now and into the future.

Visit www.coresite.com.