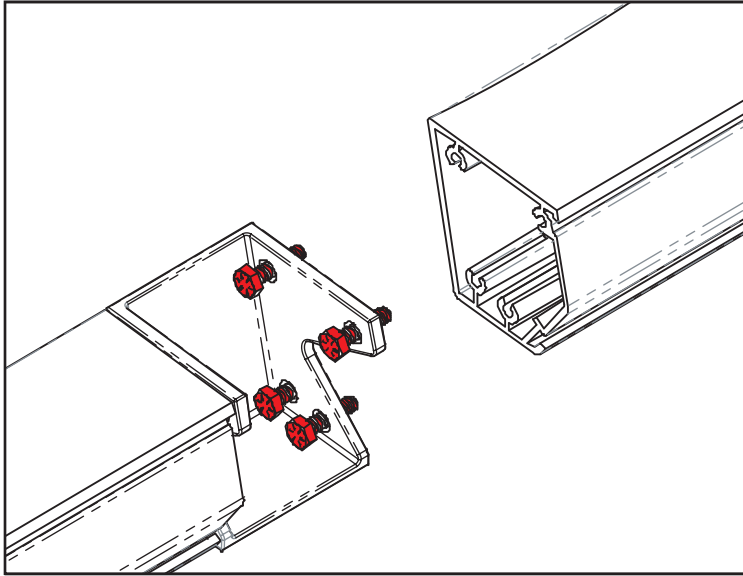
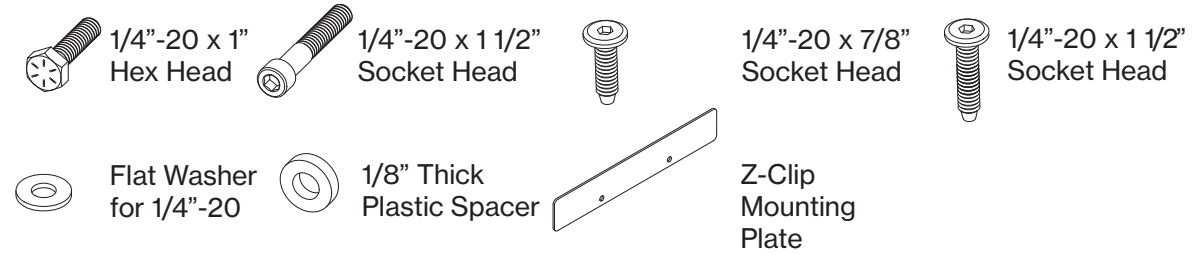


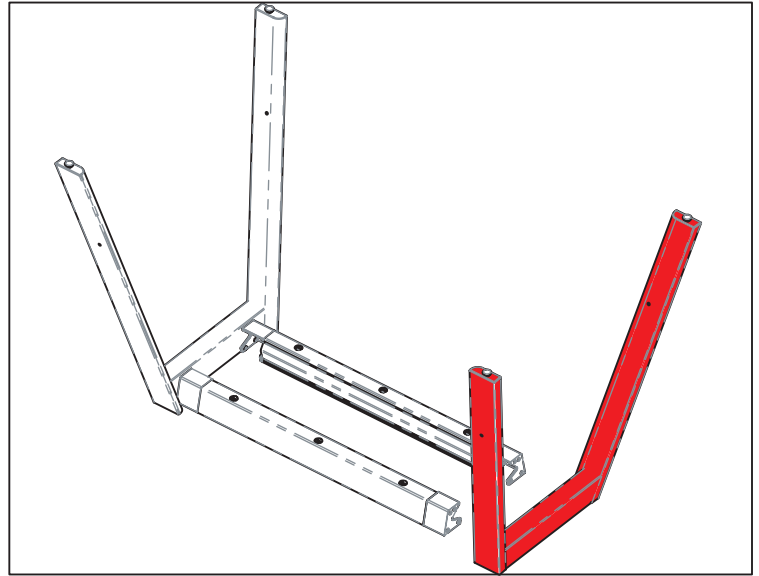
TOOLS REQUIRED:

#4 Hex Key
3/16" Hex Key
Phillips Screwdriver
Socket Wrench
7/16" Socket
Socket Extension

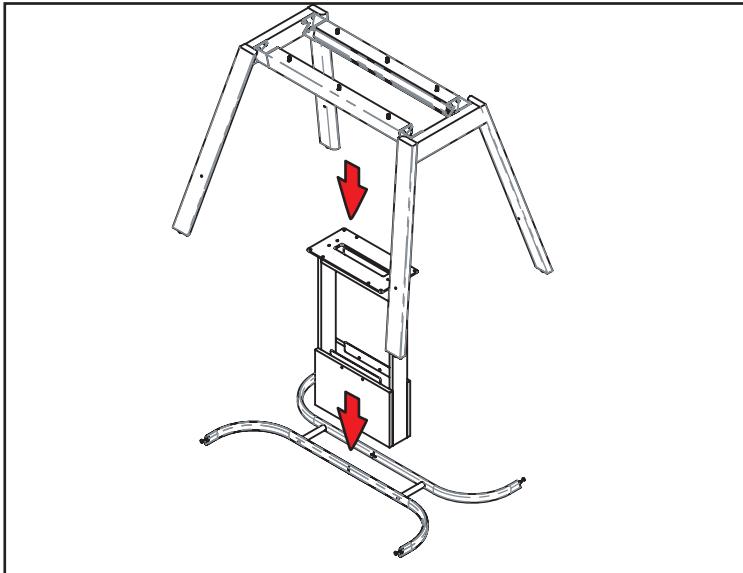
HARDWARE:



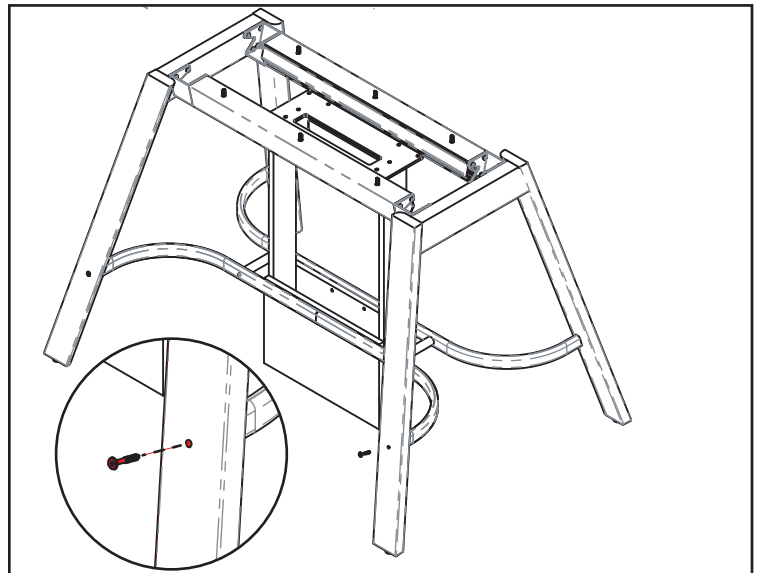
If your installation includes a multi-piece rail, align rail with Splice and secure using 1/4"-20 x 1" hex head bolt (x4). Tighten with 7/16" wrench - repeat as required.



With rails upside down on a protective surface, position end bases aligning threaded inserts with splices. Fasten rails to bases with 1/4"-20 x 1" hex bolts (x8 per base)



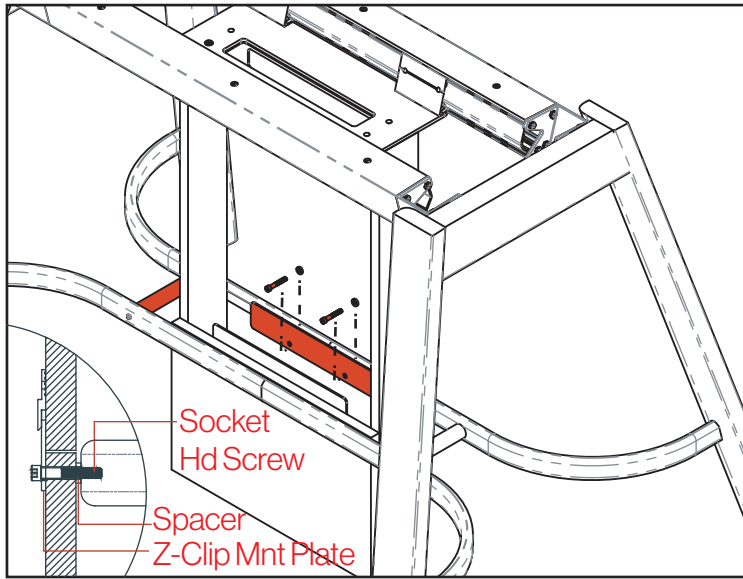
Carefully slip Plinth base into Low bar assembly as shown. Be sure not to damage plinth base finish with Low bar contact.



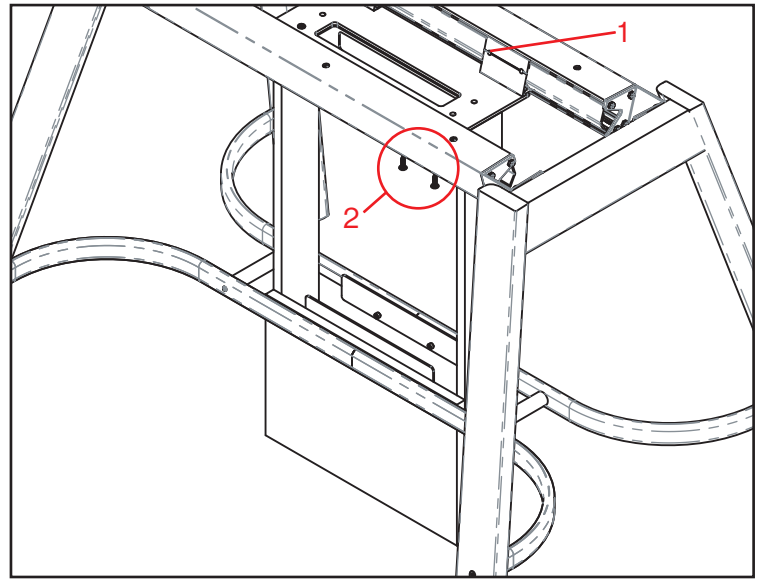
Once Low bar assembly in place, secure to bases using 1/4"-20 x 1 1/2" joiner bolt (x4).

Trestle Table

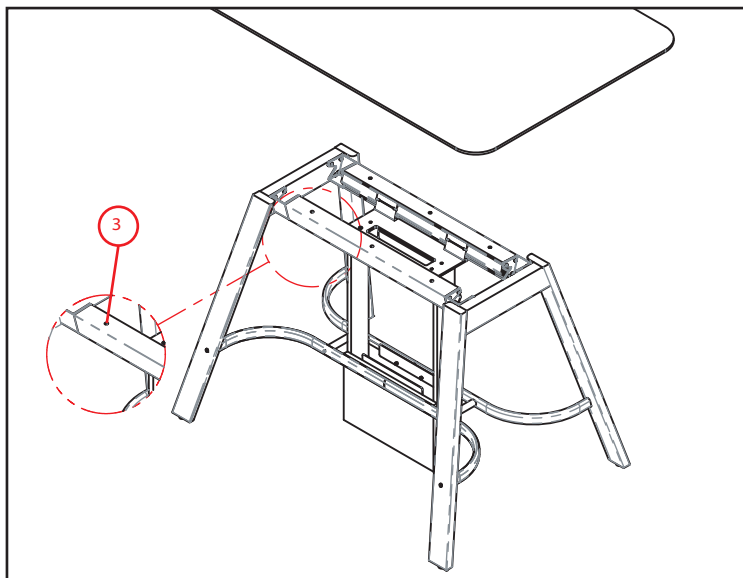
INSTALLATION GUIDE



Position Plinth so through holes align with threaded holes in Low Bar. Align Z-Clip Mnt Plate through holes & secure with Socket Head Bolt & Spacer as shown. Replace Cross Support removed in step 1.

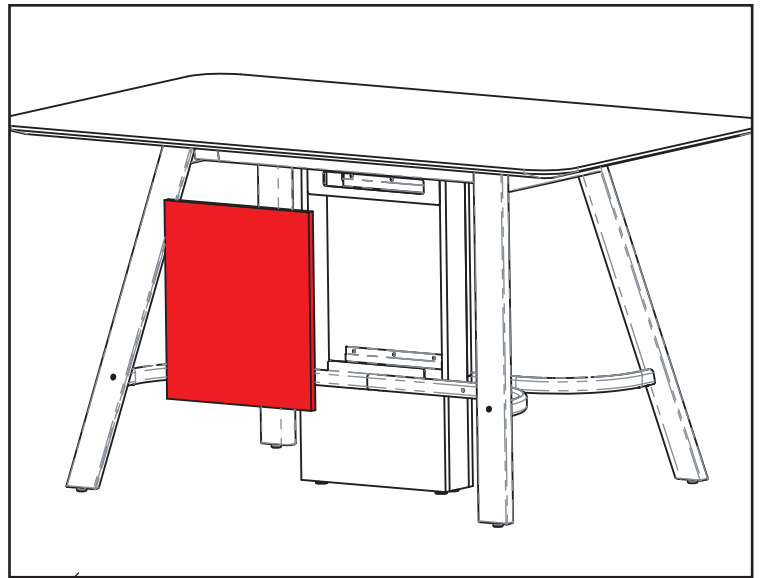


Slide Rail Brackets (already installed in rail) into position, aligning through holes in Plinth Top Plate (2) and threaded holes in rail (1). Secure with 1/4"-20 x 7/8" Joiner Bolts.



Place Top on Base Assembly, aligning pre-installed Threaded Inserts with through holes in rail. Once aligned, secure with Flat Washer and Hex Head Bolt (3). Tighten until snug with 7/16" Washer and Hex Head Bolt (3). Tighten until socket, extension & ratchet. Do Not Over Torque.

If your installation includes a Power / Connectivity Device, install as per instructions provided with device. All wiring is to be routed to the floor through the Plinth Base.



Hang removable panels on Plinth Base by engaging pre-installed Z-Clips on panel with Upper Plinth Bracket & Mounting Plate. Be sure the removable panel grain aligns with the lower fixed section of plinth.