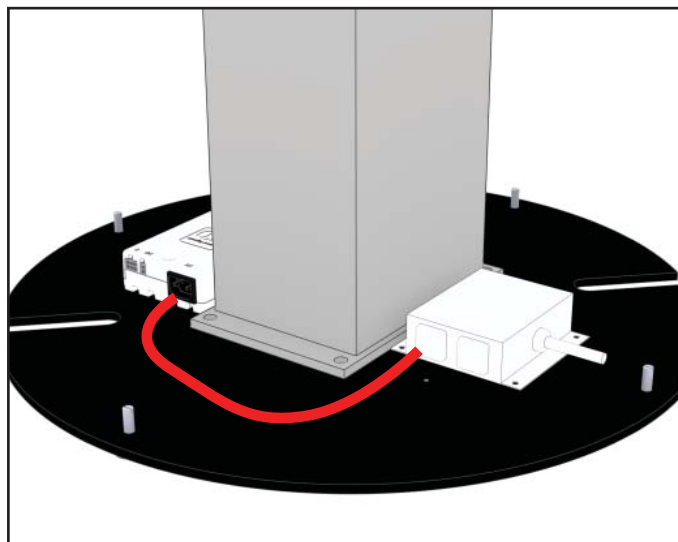


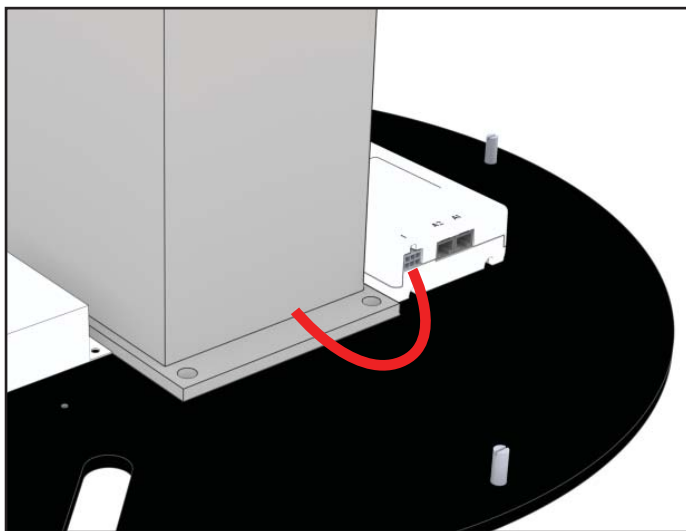
Step 1

Remove the metal shroud and leather base from the column.



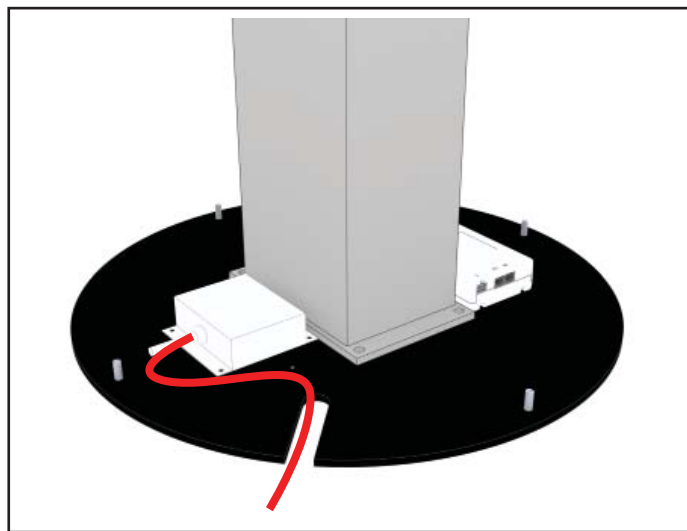
Step 2

Fasten the mini tap to the base with a 8-32 x 3/8" machine screw or double sided tape. Connect the power cord from the control box to the mini tap.



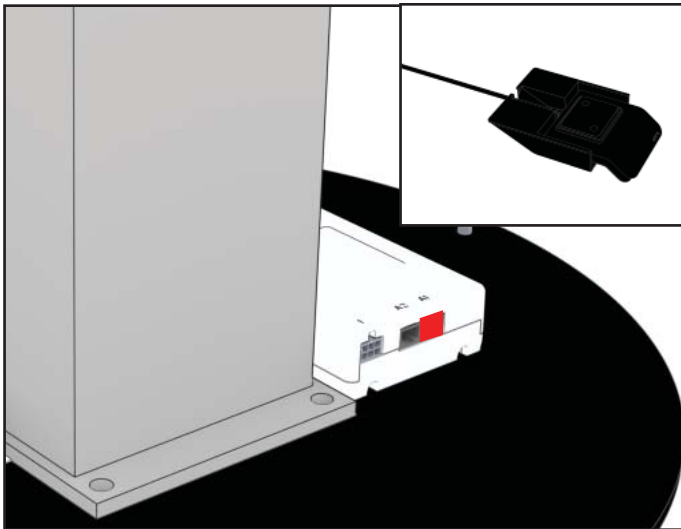
Step 3

Connect the electric lift jumper cable to the control box labelled #1 and to the base.



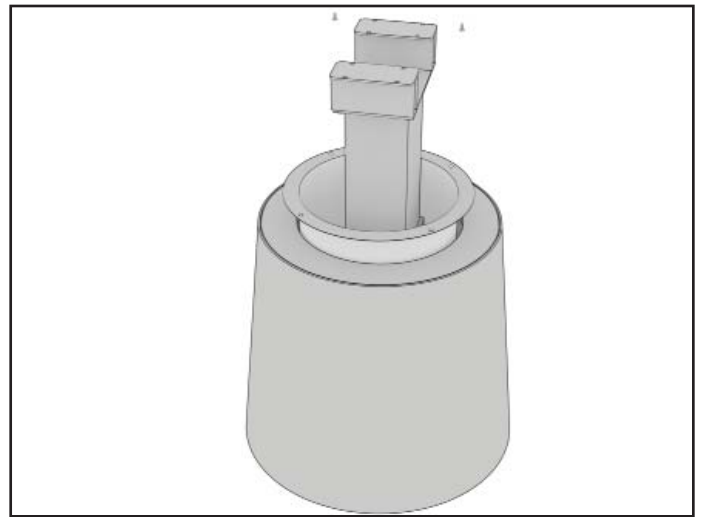
Step 4 (for 1 power unit in the table top)

Feed the cord from the mini tap into the slot in the metal base. The cord will exit the completed table assembly through this slot and under the base.

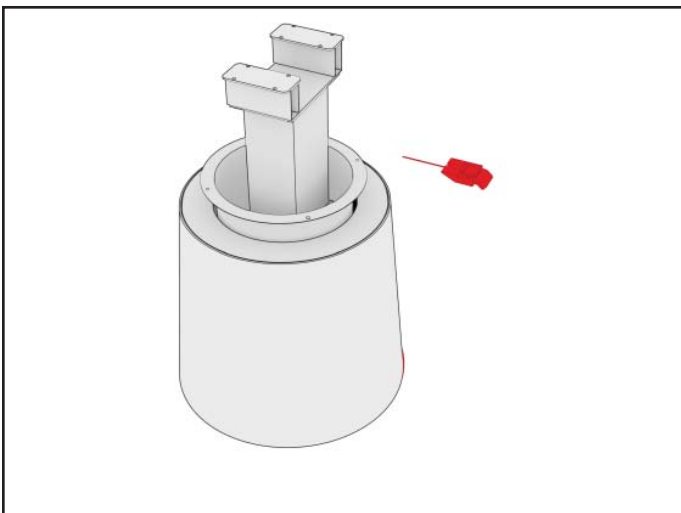
**Step 5**

Connect the paddle handle to the control box.
Raise the column to the highest position. This will make it easier to assemble the table.

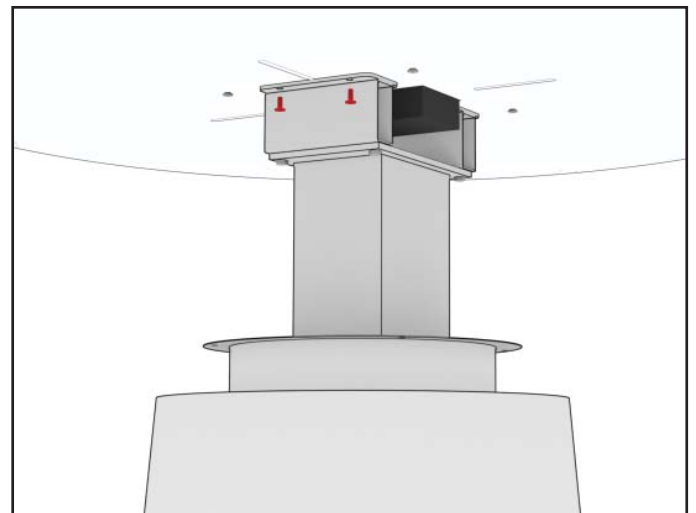
If the column does not raise, initialize the column by lowering the column to the lowest position. Continue holding down until the column jumps up a 1/4".

**Step 7**

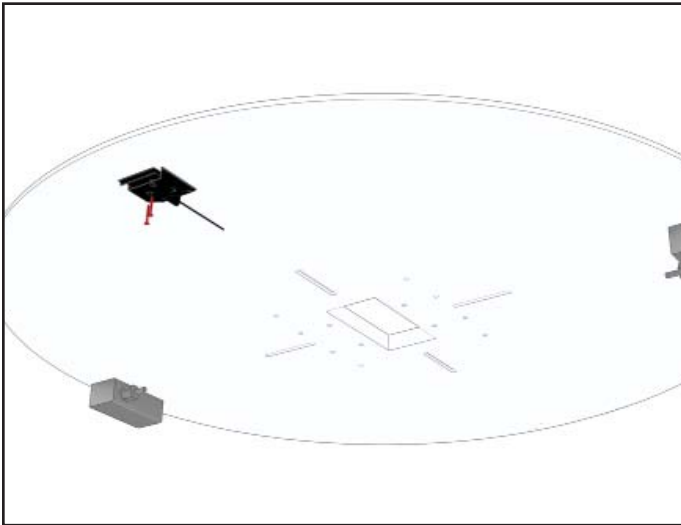
Place the Leather base over the column. Place the round shroud over the column and inside the base.

**Step 7**

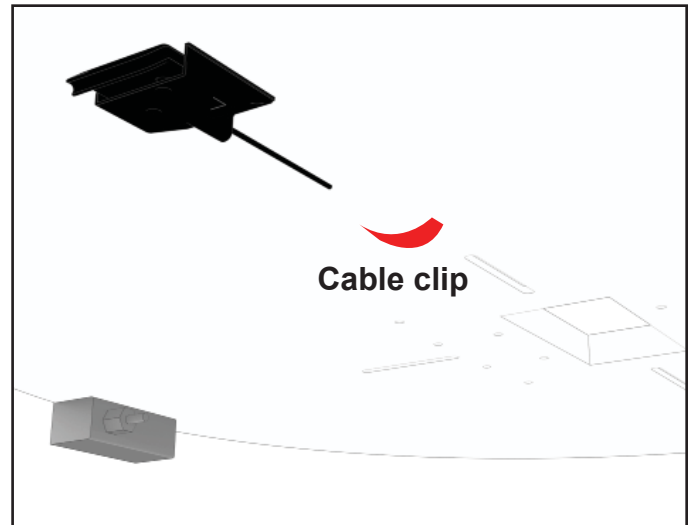
Feed the handle out of the base and column shroud.

**Step 8**

Place the work surface on the column.
Bolt in place with the 1/4-20 x 3/4" pan head machine screws.

**Step 9**

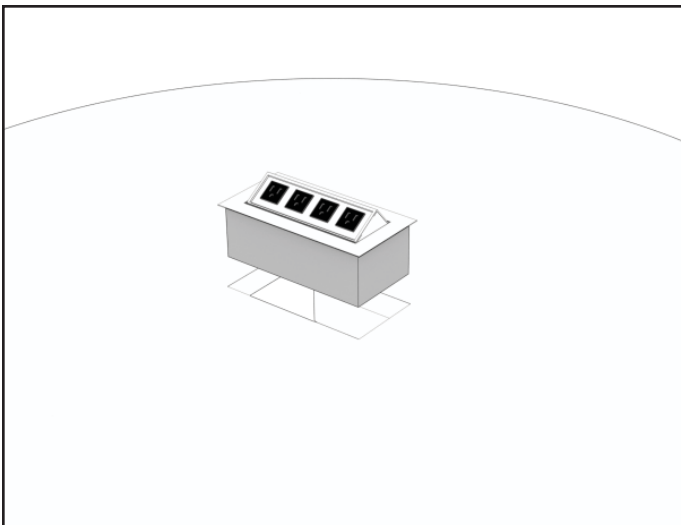
Attach the control paddle to the under side of the top with #8 x 1-1/4" flat head wood screws.
Attach any under mount power units to the underside of the table with #8 x 3/4" wood screws.

**Step 10**

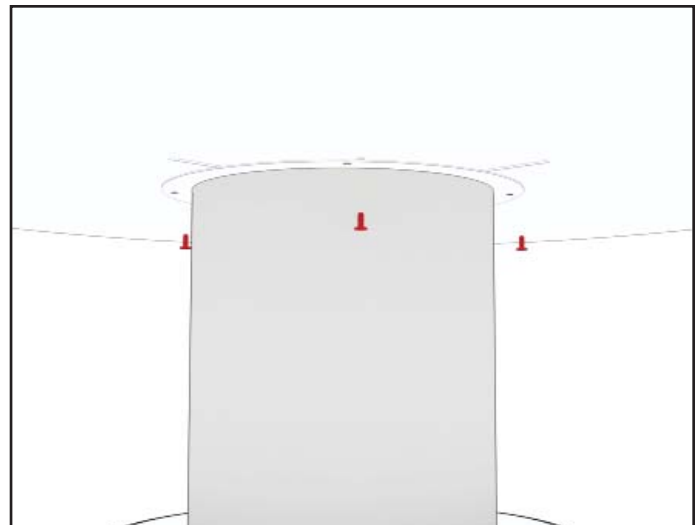
Use cable clips to align the cables in the slots on the underside of the work surface.

Step 12 (multiple power outlets and cords)

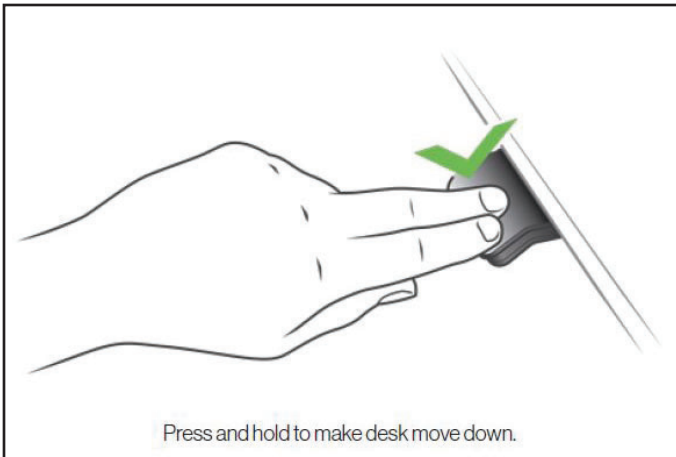
When multiple outlets are used on the table they will be daisy chained. 2 distribution blocks will be used. 1 distribution block will be located on the bottom of the base. The other located on the underside of the table top. Slinky style cords will be used to connect the distribution blocks.

**Step 11**

Install desktop power unit.

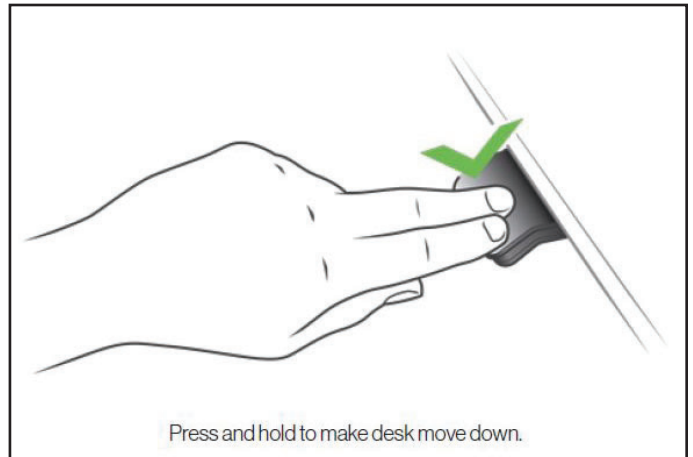
**Step 13**

Attach the column to the underside of the table top with 1/4-20 x 3/4" pan head wood screws. All cables should be placed in the grooves on the underside of the top and not pinched by the shroud.
Test table by raising to the maximum height and lowering to the lowest height. Confirm cables are moving freely in the base. Test power outlets to confirm they work.



Step 6

Initialize height adjustable by pushing down on the handle.
Push down until the desk is at the lower limit.
Briefly release down.
Press and hold down for 5 seconds, wait until all desk movement has stopped, then release.
If successful, you should see a slight up/down movement of the table.



Step 7

Raise the table to a height of 38" measured with a tape measure from the floor to the top surface of the table.