

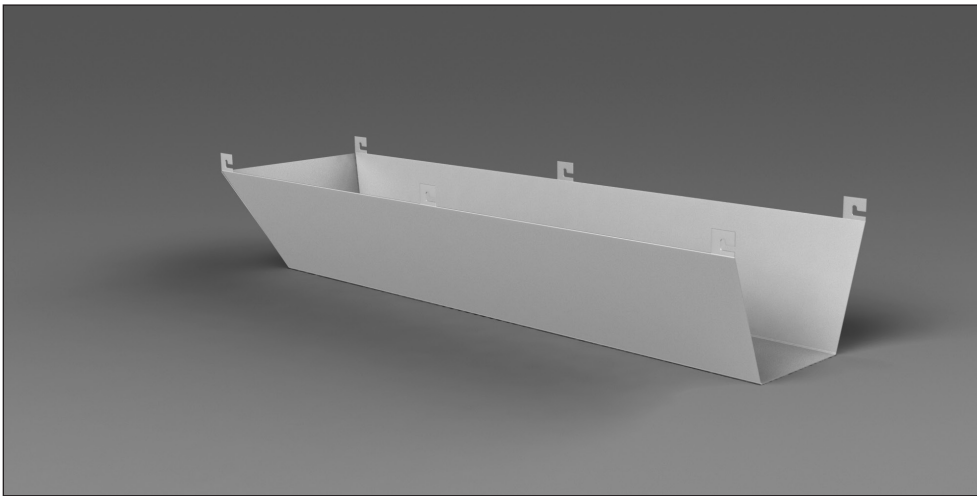
# Vox®

Hanging Wire Management pan

Tel 800 668 9318  
Tel 416 298 5700  
Fax 416 298 9535  
mail@nienkamper.com  
www.nienkamper.com

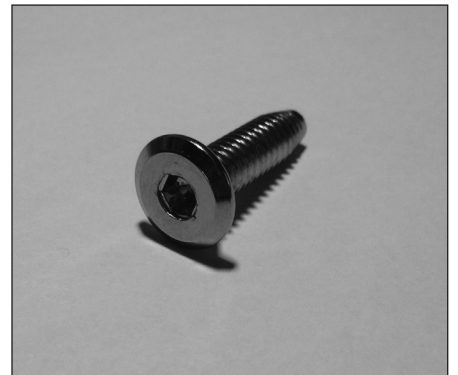
## INSTALLATION SUPPLEMENT FOR INSTALLING HANGING FROM RAIL WIRE MANAGEMENT PAN

Vox Wire Management pan



Pan size will vary

7/8" Socket Screw with Hex head

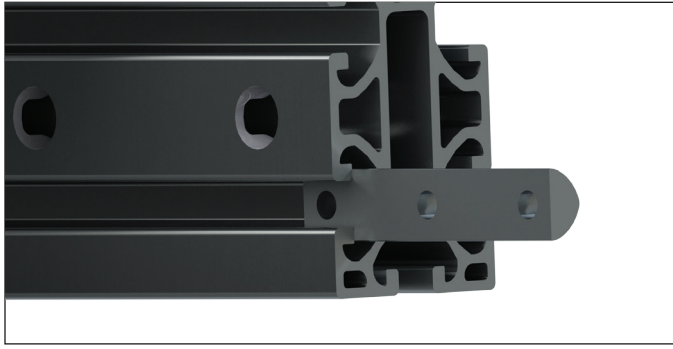


Rail Insert



## Positioning of Wire Management pan

---



1

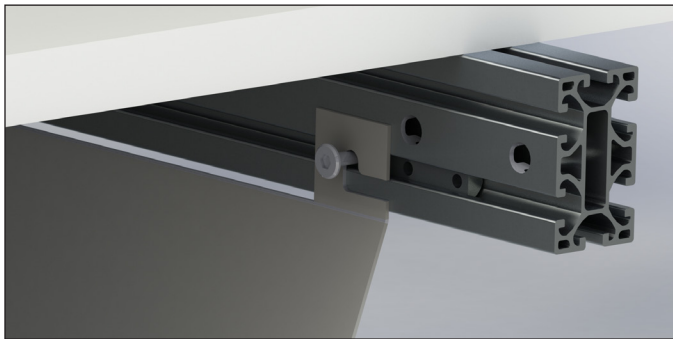
(Wire Management pan will vary in size)

- 1 - If inserts are not yet added to rail, add inserts to first slot of rail.

2



- 2 - Add socket screws to rail inserts so the Wire Management pan can hang below the table.



- 3- Add the wire pan by sliding Wire Management Pan onto the socket screws.