

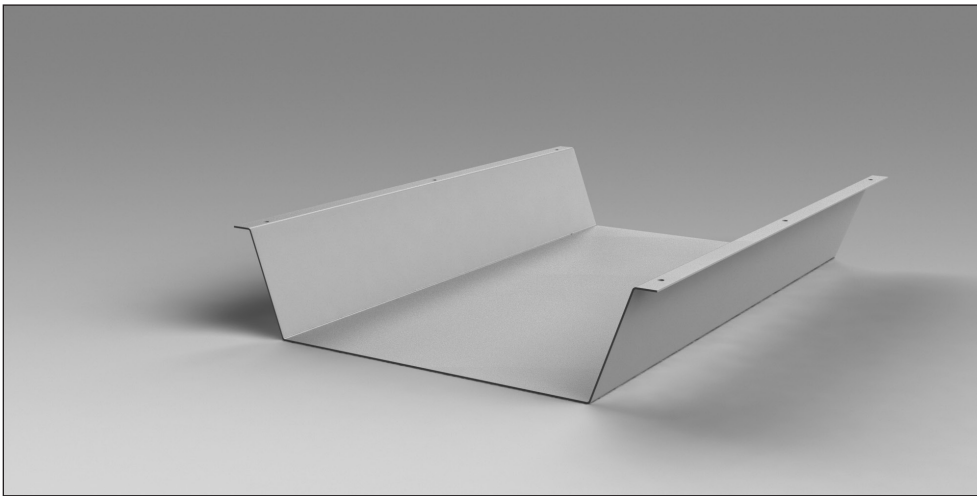


Bolt to bottom of table Wire Management pan

Tel 800 668 9318
Tel 416 298 5700
Fax 416 298 9535
mail@nienkamper.com
www.nienkamper.com

INSTALLATION SUPPLEMENT FOR INSTALLING BOLT UNDER TABLE WIRE MANAGEMENT PAN

Vox Wire Management pan

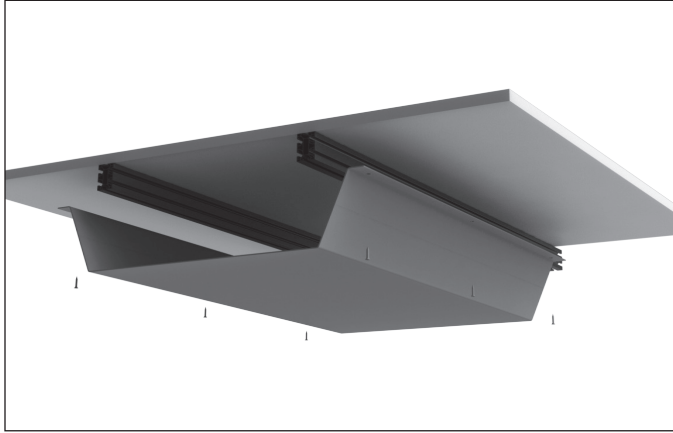


Pan size will vary

Round head Wood Screw
#8 5/8 Wood Screw



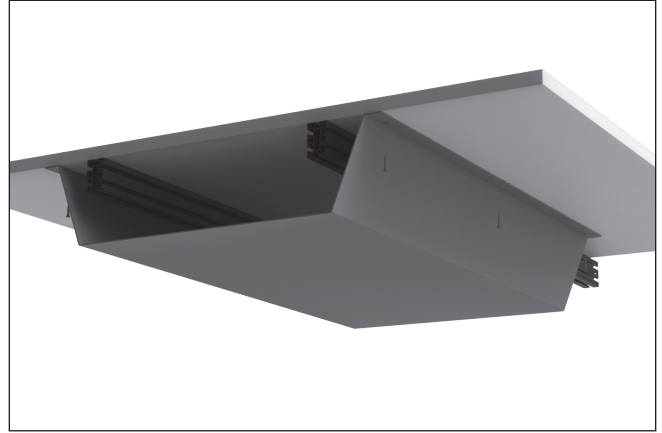
Positioning and Screwing on Wire Management pan



(Wire Management pan will vary in size)

- 1 - Place Wire Management pan to where you would like it positioned.

2



(Wire Management pan will vary in size)

- 2 - Use #8 5/8 Wood screw to hold Wire Management Pan in place