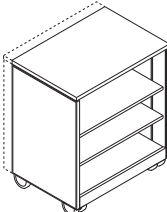
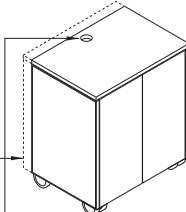
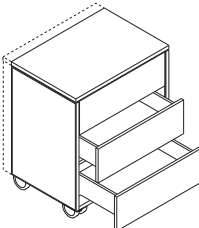


Vox® Carts are designed to complement all credenzas and cabinets in the Vox® Collection. Each cart features aluminum trim around the perimeter of the sides, available in five anodized finishes to coordinate seamlessly with the entire collection.

Constructed in standard Nienkämper wood veneers and stains, Vox® Carts stand 34¼" high. Their end elevation aligns perfectly with 34¼" high Vox® credenzas, allowing them to be paired together for a continuous storage solution.

	Model Number	Cabinet Finish	Top Finish	L" x	D" x	H"	List Price	Product Description
<u>OPEN WITH SHELVES</u> 	<b>23480/2</b>	Wood	Wood	30	20	34 ¼	<b>5,400</b>	<ul style="list-style-type: none"><li>• 2 adjustable veneered shelves.</li><li>• Captive shelf storage below (1 shelf).</li><li>• Fully adjustable shelves in 1" increments.</li><li>• 4" diameter, non-marking polyurethane tired casters.</li><li>• Shelf size: 27¾" W x 18"/21½" D.</li><li>• Interior Dimensions: 27¾" W x 19¼"/22¾" D x 27½"H.</li><li>• Accommodates most document cameras.</li><li>• Accommodates all electronic projectors.</li></ul>
	23480/5	Wood	Laminate	30	20	34 ¼	5,130	
	<b>23481/2</b>	Wood	Wood	30	23 ½	34 ¼	<b>5,680</b>	
	23481/5	Wood	Laminate	30	23 ½	34 ¼	5,395	
<u>TWO DOORS WITH SHELVES</u>  Grommet for wire access open for wire access through back	<b>23486/2</b>	Wood	Wood	30	20	34 ¼	<b>6,770</b>	<ul style="list-style-type: none"><li>• 2 adjustable veneered shelves.</li><li>• Captive shelf storage below (1 shelf).</li><li>• Fully adjustable shelves in 1" increments.</li><li>• 4" diameter, non marking polyurethane tired casters.</li><li>• 2 doors with positive locking touch latches.</li><li>• 2<sup>5</sup>/<sub>8</sub>" diameter aluminum grommet centered towards back of top.</li><li>• Rebated shelves for wire passage.</li><li>• 2" wire access slot at bottom back edge.</li><li>• Shelf size: 27¾" W x 17"/20½" D.</li><li>• Interior Dimensions: 27¾" W x 18¼"/21¼" D x 27½"H.</li><li>• Accommodates most document cameras.</li><li>• Accommodates all electronic projectors.</li></ul> <p><b>Optional:</b></p> <ul style="list-style-type: none"><li>• Single lock on upper left corner of right door, locks both doors.</li><li>• Addition of lock requires a pull, see standard pulls in our Credenza price lists.</li></ul>
	23486/5	Wood	Laminate	30	20	34 ¼	6,425	
	<b>Cabinet with Lock</b>							
	<b>23487/2</b>	Wood	Wood	30	20	34 ¼	<b>6,980</b>	
	23487/5	Wood	Laminate	30	20	34 ¼	6,615	
	<b>23482/2</b>							
	23482/5	Wood	Laminate	30	23 ½	34 ¼	6,760	
	<b>Cabinet with Lock</b>							
	<b>23484/2</b>	Wood	Wood	30	23 ½	34 ¼	<b>7,345</b>	
	23484/5	Wood	Laminate	30	23 ½	34 ¼	6,970	
<u>THREE DRAWERS</u> 	<b>23488/2</b>	Wood	Wood	30	20	34 ¼	<b>6,460</b>	<ul style="list-style-type: none"><li>• 3-drawers, bottom of interiors lined with fabric.</li><li>• Interior dimensions: 4" H x 16<sup>5</sup>/<sub>16</sub>" D x 26<sup>7</sup>/<sub>8</sub>" L.</li><li>• 4" diameter non-marking polyurethane-tyred casters.</li><li>• Anti-tilt mechanism for drawers.</li><li>• Does not accommodate all document cameras.</li></ul> <p><b>Optional:</b></p> <ul style="list-style-type: none"><li>• Single lock, mounted on right side, locks all three drawers.</li></ul>
	23488/5	Wood	Laminate	30	20	34 ¼	6,135	
	<b>Cabinet with Lock</b>							
	<b>23489/2</b>	Wood	Wood	30	20	34 ¼	<b>6,655</b>	
	23489/5	Wood	Laminate	30	20	34 ¼	6,325	
	<b>23483/2</b>							
	23483/5	Wood	Laminate	30	23 ½	34 ¼	6,445	
	<b>Cabinet with Lock</b>							
	<b>23485/2</b>	Wood	Wood	30	23 ½	34 ¼	<b>7,000</b>	
	23485/5	Wood	Laminate	30	23 ½	34 ¼	6,655	

**VOX® CARTS - PHOTOGRAPHS**



**Three Drawers - Model #23483**  
Positive spring return drawer slides prevent accidental opening during use. Bottom interiors of drawers are fabric-lined.



**Open with Shelves - Model #23481**  
Shelves are fully adjustable in 1" increments. Two adjustable veneered shelves are included.



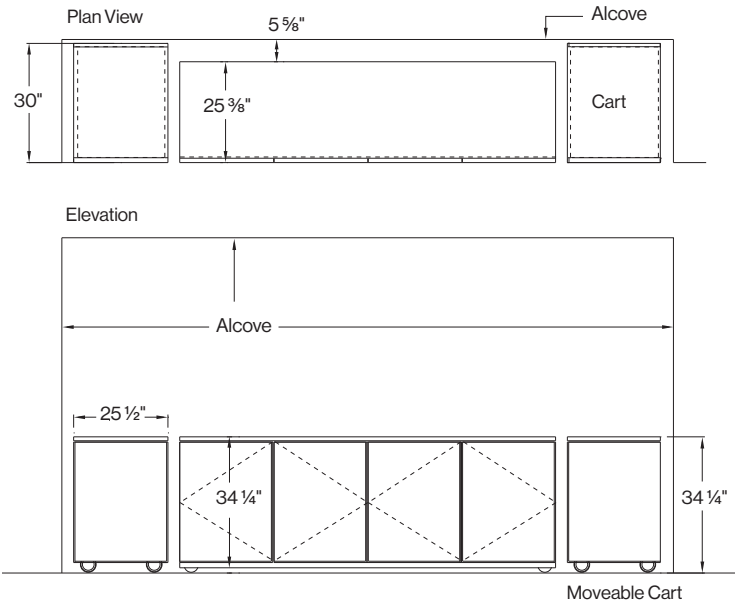
**Two Doors with Shelves - Model #23482**  
Doors have positive locking touch latches. Shelves are fully adjustable in 1" increments. Two adjustable veneered shelves are included.



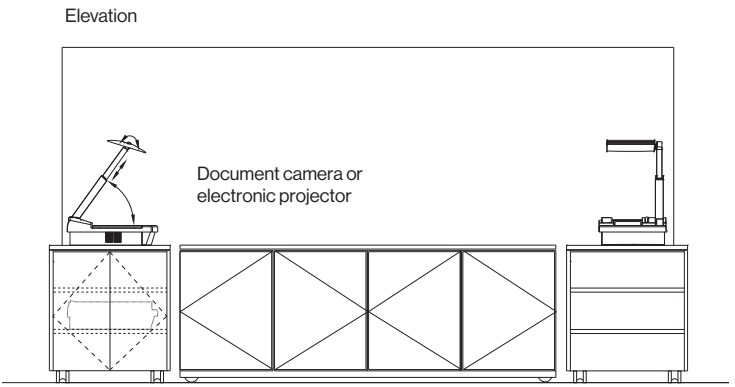
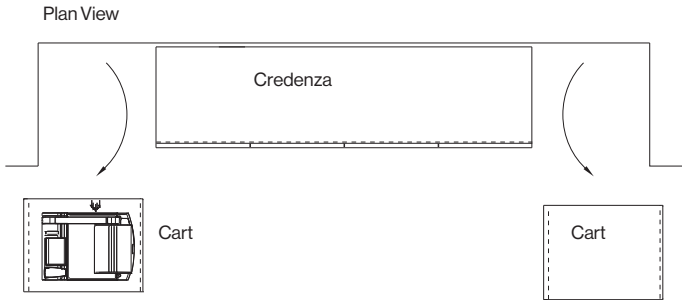
**Vox® Carts**  
Vox Carts offer flexibility and mobility in the boardroom and corporate office environment. Designed to house all multimedia equipment and hospitality services, the Vox Cart accommodates any business event from high-tech presentations to a simple lunch or coffee service.

VOX® CREDENZAS & CARTS IN STORAGE POSITION

CARTS STORED IN A BOARDROOM ALCOVE



CARTS IN USE



Vox Carts are mobile and can be used for hospitality service or housing A/V equipment and can easily be taken to various meeting spaces.