

nienkämpfer

GATEWAY™ MEDIA WALL TABLES



2026

Prices include freight charges, blanket wrapped, dock delivered, from the manufacturing source to any location in the contiguous United States. Packing and/or crating are available, if required, upcharges apply.

GATEWAY™ CURVED MEDIA WALL

FEATURES & OPTIONS

Design - busk + hertzog

Media Screen Options:

Type:

- Curved

Dimensions:

- 2 widths: 48", 58"
- 48" wide screen accommodates a maximum monitor size of 46"
- 58" wide screen accommodates a maximum monitor size of 60"
- 3 heights: 56" (for round top only), 63", 72"

Panel Finishes:

- All media screens are available in KnollTextiles fabrics.
- COM is also acceptable in most cases.
- Panels are not removable.

Trim:

- Polished aluminum trim is standard; however, 5 anodized finishes (clear, champagne, light bronze, bronze and black) are available.

Accessories:

- Curved media screens arrive on site with integrated brackets (Monitor adapter) for customers to mount their desired TV mounting bracket.
- Flat screen monitors and mounts are not included. For additional information on TV mounting, see page 30.
- Cables are concealed inside the screen and exit out through either the foot of the standard fixed base or at the bottom back of the screen as an optional choice.
- A large wire capacity post which increases cable management is available as an option. Please see page 26.
- Cable conduit can also be added if extra large capacity wire management is required.
- Large diameter polished leveler feet are standard.

Top Shape:

- Standard top shapes are Vista, Round, Rectangle with soft corners & D End.

Edges:

- 2" taper edge is standard but self edge also available.

Material / Finishes:

- Gateway table tops are available in all Nienkamper high quality veneers and finishes with grain lay up and options.
- All standard plastic laminates are also available.

Connectivity Options:

- Gateway™ Media Wall Tables are available with a range of single and multi-user connectivity devices to suit most technology and price point requirements.
- The system can also be customized to suite customer specific equipment.
- Refer to page 153-165 for more information on connectivity.

Base Features & Options:

Dimensions:

- Gateway™ Media Wall Tables have a common base size of 24" & 34" wide. See page 26 for dimension of its interior clearance.

Finishes:

- Bases are standard with a mirror polished finish.
- Fixed bases are also offered in all standard Nienkamper powder coat finishes.
- Combination of painted post and mirror polished foot assembly is available as well.



GATEWAY™ STRAIGHT MEDIA WALL

FEATURES & OPTIONS

Design - busk + hertzog

Media Screen Options:

Type:

- Straight.

Dimensions:

- 8 widths: 42", 48", 54", 60", 66", 72", 84", 96"
- 2 heights: 63" & 72"
- 42", 48" wide screen accommodates a 46" monitor size
- 54"-66" wide screen accommodates a 60" monitor size
- 72"-96" wide screen accommodates a 65" monitor size.

Panel Finishes:

- All media screens are available in KnollTextiles fabrics.
- COM is also acceptable in most cases.
- Veneer or Plastic laminate or Markerboard finish is available on Straight Media Screen upon request, contact customer service for details.
- Fabric panels come standard with stitching detail to allow for maximize panel size. See page 31 for details.
- Veneer & P-lam panels may require a seam depending on panel size. See page 31 for details.

Trim:

- Polish aluminum trim is standard; however, 5 anodized finishes (silver, champagne, light bronze, bronze, and black) are available.

Accessories:

- Straight media screen does not require the monitor adaptor, client's own TV mounting bracket can mount directly onto the media screen.
- Flat screen monitors and mounts are not included. For additional information on TV mounting bracket, see page 30.
- Cables are concealed inside the screen and exit out through either the foot of base or at the bottom back of the screen as optional choice. Please see page 26.
- Cable conduit can also be added if necessary as wire management.
- Large diameter polished leveler feet are standard.

Top Options:

Dimensions:

- 3 table heights are standard to Gateway Media Wall Tables, 22" lounge height (for round top only), 29" standard work height and 38" standing height.
- Table depths: 36" to 60" which depend on shape of the top.
- Table lengths are available from 48" to 96".
- Standard top thickness is 1 1/4".

Top Shape:

- Standard top shapes are Vista, Round, Rectangle with soft corners & D End.

Edges:

- 2" taper edge is standard but self edge also available.

Material / Finishes:

- Gateway table tops are available in all Nienkamper high quality veneers and finishes with grain lay up and options.
- All standard plastic laminates are also available.

Connectivity Options:

- Gateway™ Media Wall Tables are available with a range of single and multi-user connectivity devices to suit most technology and price point requirements.
- The system can also be customized to suite customer specific equipment.
- Refer to page 153-165 for more information on connectivity.

Base Features & Options:

Dimensions:

- Gateway™ Media Wall Tables have a common base size of 24" & 34" wide. See page 26 for dimension of its interior clearance.

Finishes:

- Bases are standard with a mirror polished finish.
- Fixed bases are also offered in all standard Nienkamper powder coat finishes.
- Combination of painted post and mirror polished foot assembly is available as well.



GATEWAY™ STRAIGHT MEDIA WALL WITH HEIGHT ADJUSTABLE TABLE

FEATURES & OPTIONS

Design - busk + hertzog

Media Screen Options:

Type:

- Straight with Height Adjustable Table.

Dimensions:

- 8 widths: 42", 48", 54", 60", 66", 72", 84", 96"
- 2 heights: 63" & 72"
- 42", 48" wide screen accommodates a 46" monitor size
- 54"-66" wide screen accommodates a 60" monitor size
- 72"-96" wide screen accommodates a 65" monitor size."

Panel Finishes:

- All media screens are available in KnollTextiles fabrics.
- COM is also acceptable in most cases.
- Veneer or Plastic laminate or Markerboard finish is available on Straight Media Screen upon request, contact customer service for details.
- Fabric panels come standard with stitching detail to allow for maximize panel size. See page 31 for details.
- Veneer & P-lam panels may require a seam depending on panel size. See page 29 for details.

Trim:

- Polish aluminum trim is standard; however, 5 anodized finishes (clear, champagne, light bronze, bronze, and black) are available.

Accessories:

- Straight media screen for height adjustable table has a fixed TV bracket in which client's own TV mounting bracket can mount directly onto this bracket.
- Flat screen monitors and mounts are not included. For additional information on TV mounting bracket, see page 30.
- Cables are concealed inside the screen and exit out through the removable Shroud or at the bottom back of the screen as optional choice. Please see page 28.
- Shroud also conceals floor power feed. See page 28.
- Large diameter polished leveler feet are standard.
- Cable conduit can also be added if extra large capacity wire management is required.
- Large diameter polished leveler feet are standard.

Top Options:

Dimensions:

- 27"-42" height is standard to Gateway Media Wall with height adjustable tables.
- Table depths: 36" to 60" available depending on shape of the top.
- Table lengths are available from 48" to 96".
- Standard top thickness is 1¼".

Top Shape:

- Standard top shapes are Vista, Round, Rectangle with soft corners & D End.

Edges:

- 2" taper edge is standard but self edge also available.

Material / Finishes:

- Gateway table tops are available in all Nienkamper high quality veneers and finishes with grain lay up and options.
- All standard plastic laminates are also available.

Connectivity Options:

- Gateway™ Media Wall Tables are available with a range of single and multi-user connectivity devices to suit most technology and price point requirements.
- The system can also be customized to suite customer specific equipment.
- Refer to pages 153-165 for more information on connectivity.

Base Features & Options:

Dimensions:

- Gateway™ Media Wall Tables have a common base size of 24" & 34" wide.
- Note: Cables do not pass through height adjustable base models.

Finishes:

- Height adjustable posts are standard with gray painted post and polished foot. Mirror polish, black and white powder coat.



GATEWAY™ COLLECTION FINISHES —VENEER

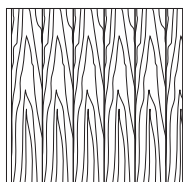
All wood surfaces are protected with a durable polyurethane clear lacquer with UV inhibitor. This finish is known for its exceptional durability, as well as abrasion, chemical, impact and scratch resistance. Standard sheen level is 45 degrees. Optional matte, 5, 10 and 35 degree sheen levels are available on request at no additional cost.

| Wood Species | Order Code | Veneer/Stain | Upcharge |
|---------------------------|------------|-------------------------------------------------------|------------------------------------|
| Maple | F-01 | Natural Maple | No upcharge applies. |
| | F-02 | Natural Curly Maple - Rotary Cut | Add 15%. |
| | F-03 | Natural Bird's Eye Maple - Rotary Cut | Call Customer Service for pricing. |
| | F-04 | Maple Stained Pear | No upcharge applies. |
| Cherry | F-05 | Natural Cherry | No upcharge applies. |
| | F-06 | Standard Cherry | No upcharge applies. |
| | F-07 | Cherry Stained Amber | No upcharge applies. |
| | F-08 | Cherry Stained Auburn | No upcharge applies. |
| | F-09 | Cherry Stained Burgundy | No upcharge applies. |
| Mahogany | F-10 | Light Mahogany | No upcharge applies. |
| | F-11 | Medium Mahogany | No upcharge applies. |
| | F-12 | Dark Mahogany | No upcharge applies. |
| | F-13 | Red Mahogany | No upcharge applies. |
| Anagre | F-14 | Natural Figured Anagre - Qtr. Cut Book-Match | Add 15%. |
| | F-15 | Figured Anagre Stained Amber - Qtr. Cut Book-Match | Add 15%. |
| Sycamore | F-16 | Natural Figured Sycamore - Qtr. Cut Book-Match | Add 15%. |
| Walnut | F-17 | Burnt Walnut | No upcharge applies. |
| | F-19 | Natural Walnut- Flat Cut Book-Match | No upcharge applies. |
| | F-19FM | Natural Walnut- Flat Cut Book-Match (matte sheen) | No upcharge applies. |
| | F-27F | Creamy Walnut- Flat Cut Book-Match (10° sheen) | No upcharge applies. |
| | F-27R | Creamy Walnut - Rift Cut Slip-Match (10° sheen) | Add 5% |
| | F-28 | Tawny Walnut | No upcharge applies. |
| | F-31FM | Autumn Walnut- Flat Cut Book-Match (matte sheen) | No upcharge applies. |
| | F-31RM | Autumn Walnut - Rift Cut Slip-Match (matte sheen) | Add 5% |
| Oak | F-18F | Natural White Oak - Flat Cut Book-Match (10° sheen) | No upcharge applies. |
| | F-18R | Natural White Oak - Rift Cut Slip-Match (10° sheen) | Add 5% |
| | F-26 | Charcoal Ash On Oak- Flat Cut Book- Match (10° sheen) | No upcharge applies. |
| | F-29F | Smoky Oak - Flat Cut Book-Match | No upcharge applies. |
| | F-29R | Smoky Oak - Rift Cut Slip-Match | Add 5% |
| | F-29FM | Smoky Oak - Flat Cut Book-Match (matte sheen) | No upcharge applies. |
| | F-29RM | Smoky Oak - Rift Cut Slip-Match (matte sheen) | Add 5% |
| | F-30FM | Whisper White Oak - Flat Cut Book-Match (matte sheen) | No upcharge applies. |
| | F-30RM | Whisper White Oak - Rift Cut Slip-Match (matte sheen) | Add 5% |
| | F-32FM | Cotton White Oak - Flat Cut Book-Match (matte sheen) | No upcharge applies. |
| | F-32RM | Cotton White Oak - Rift Cut Slip-Match (matte sheen) | Add 5% |
| Sapele – Ribbon Stripe | F-20 | Natural Ribbon Strip Sapele - Qtr. Cut Slip-Match | No upcharge applies. |
| Moabi (Cherry substitute) | F-21 | Natural Moabi - Quarter - Qtr. Cut Book-Match | No upcharge applies. |
| Cape Coast Walnut | F-22 | Dark Cape Coast Walnut - Qtr. Cut Slip-Match | No upcharge applies. |
| | F-23 | Natural Cape Coast Walnut - Qtr. Cut Slip-Match | No upcharge applies. |
| | F-23 | Natural Cape Coast Walnut - Qtr. Cut Slip-Match | No upcharge applies. |
| Ash | F-25 | Slate Gray Ash - Qtr. Cut Slip-Match | No upcharge applies. |

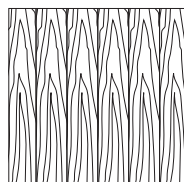
VENEER GRAIN OPTIONS

Nienkämper products utilize the best quality veneers available, and, combined with Nienkämper's patented veneering systems, create work environments of incredible quality and beauty.

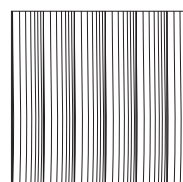
All veneer furniture comes standard with flat cut book-match veneer; flat cut slip-match veneer can also be specified. Quarter cut slip-match and quarter cut book-match veneers are available at a 5% upcharge. Figured Anagre and Figured Sycamore veneers are Quarter cut book-matched. Bird's Eye Maple and Curly Maple are rotary cut. Facet Edge, Taper edge, Flowform, Camber and Self edge tops with veneer are manufactured with a solid wood edge. All edges are then veneer wrapped to create a seamless profile top.



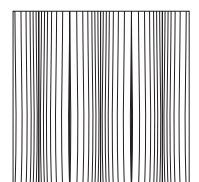
Standard V1
Flat Cut Book-Match



Flat Cut Slip-Match V2



Quarter Cut Slip-Match V3
Add 5%



Quarter Cut Book-Match V4
Add 5%

GATEWAY™ COLLECTION FINISHES — PLASTIC LAMINATES

Wood grain plastic laminate surfaces are available on table tops with Facet, Taper and Self edges.

These tops are manufactured with a solid wood edge that is applied prior to the laminate top surface. This method conceals the thickness of the wood edge, while providing the durability required. Wood edges are selected that most closely resemble both the species and the color of the laminate chosen

Nienkämper has pre-selected a number of standard wood grain plastic laminates that represent a cross section of both color and species. Simply include the order code with the model number to make these selections. Alternatively wood grain plastic laminates selected outside of Nienkämper's standard selection can be made by specifying the manufacturer as well as the description and model number of the laminate at the time of order.

| Wood Grain Plastic Laminate Surfaces | Order Code | Manufacturer # | Finish |
|--------------------------------------|------------|--------------------|---------------------|
| Hardrock Maple | WL2 | Pionite WM791-SD | Textured/Suede |
| Monticello Maple | WL5 | Wilsonart 7925-38 | Fine Velvet Texture |
| Fusion Maple | WL13 | Wilsonart 7909-60 | Matte |
| New Age Oak | WL14 | Wilsonart 7938-38 | Fine Velvet Texture |
| Wild Cherry | WL18 | Wilsonart 7054-60 | Matte |
| River Cherry | WL19 | Wilsonart 7937-38 | Fine Velvet Texture |
| Montana Walnut | WL20 | Wilsonart 7110T-78 | Fine Grain |
| Skyline Walnut | WL26 | Wilsonart 7964K-12 | Soft Grain |
| Continental Walnut | WL-29 | Wilsonart 8232K-05 | Timbergrain |
| Neo Walnut | WL-30 | Wilsonart 7991-38 | Fine Velvet Texture |
| Walnut Heights | WL-31 | Wilsonart 7965K-12 | Soft Grain |
| Grayed Oak | WL-32 | Formica 5791-PG | Pure Grain Texture |
| Millennium Oak | WL-33 | Formica 5887-58 | Matte |
| Aged Ash | WL-34 | Formica 8844-WR | Woodbrush |
| Lowell Ash | WL-35 | Wilsonart 7994-38 | Fine Velvet Texture |
| Natural Ash | WL-36 | Formica 8843-WR | Woodbrush |
| Norwegian Ash | WL-37 | Wilsonart 8241-38 | Fine Velvet Texture |
| Weathered Ash | WL-38 | Formica 8842-WR | Woodbrush |
| Smoky Brown Pear | WL-39 | Formica 5488-26 | Oiled Wood |
| Studio Teak | WL-40 | Wilsonart 7960K-18 | Linearity |
| Fawn Cypress | WL-41 | Wilsonart 8208K-16 | Casual Rustic |
| Landmark Wood | WL-42 | Wilsonart 7981K-12 | Soft Grain |
| Natural Cerise | WL-43 | Formica 8863-58 | Matte |
| Natural Recon | WL-44 | Wilsonart 7996-38 | Fine Velvet Texture |
| Pecan Woodline | WL-45 | Formica 5883-58 | Matte |

To specify the wood grain laminate required simply add the Order Code WL_ to the model number of the product.

Samples and specific technical data is available from your local sales representative or by contacting Nienkämper's Customer Service department at **800.668.9318**.

GATEWAY™ COLLECTION FINISHES — PLASTIC LAMINATES

COLORED P-LAM

Nienkämper has a number of solid color laminates to choose from, simply include the order code with the model number to make these selections. Alternatively plastic laminates selected outside of Nienkämper's standard selection can be made by specifying the manufacturer as well as the description and model number of the laminate at the time of order. Contact customer service for pricing.

| Colored Plastic Laminates Surface | Order Code | Manufacturer # | Finish |
|------------------------------------------------|------------|-------------------|----------------|
| Gray (Nienkämper - Light Gray/Putty) | CL-01 | Wilsonart 1500-60 | Matte |
| Plantinum Gray (Nienkämper - Medium Grey/Clay) | CL-02 | Nevamar S6023T | Textured |
| Slate Grey (Nienkämper - Dark Grey) | CL-03 | Wilsonart D91-60 | Matte |
| Black | CL-04 | Wilsonart 1595-60 | Matte |
| Angel White | CL-05 | Pionite SW-826SD | Textured/Suede |
| Frosty White | CL-06 | Wilsonart 1573-60 | Matte |
| White (for writable surface) | CL-07 | Formica 949-90 | Gloss |

The unique composition offers extraordinary features coupled with a unique user experience. These include an ultra matte surface (eliminating glare), an ultra sofa feel, an anti-fingerprint surface, thermal healing of micro-scratches, increased durability as well as anti-bacterial and mold-resistant properties.

Edgeband matching all Fingerprint Resistant Plastic Laminate colors is only available when specifying a Taper edge. For Self edge tops 1" and 1 1/4" thick, matching edgeband are only available in Black (RL-01) and White (RL-03). When a matching edgeband is not available, the specified surface laminate is used on the edge. **Contact Customer Service for more details 800.668-9318.**

There is a 20% upcharge on our standard plastic laminate table pricing for Fingerprint Resistant Plastic Laminate.

| Colored "Fingerprint Resistant" Plastic Laminate Surface | Order Code | Finish |
|----------------------------------------------------------|------------|--------|
| Black | RL-01 | Matte |
| Gray | RL-02 | Matte |
| White | RL-03 | Matte |
| Sand | RL-04 | Matte |
| Brown | RL-05 | Matte |
| Clay | RL-06 | Matte |
| Beige | RL-07 | Matte |
| Ash | RL-08 | Matte |
| Smoke | RL-09 | Matte |

| Edgeband to Match with Colored "Fingerprint Resistant" Plastic Laminate | Thickness | Order Code |
|-------------------------------------------------------------------------|------------------|------------|
| Black | 3/4", 1", 1-1/4" | RE-01 |
| Gray | 3/4" | RE-02 |
| White | 3/4", 1", 1-1/4" | RE-03 |
| Sand | 3/4" | RE-04 |
| Brown | 3/4" | RE-05 |
| Clay | 3/4" | RE-06 |
| Beige | 3/4" | RE-07 |
| Ash | 3/4" | RE-08 |
| Smoke | 3/4" | RE-09 |

GATEWAY™ COLLECTION FINISHES— PLASTIC LAMINATES

COLORED P-LAM

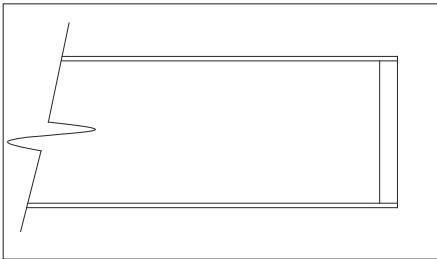
Both Taper and Self edge profiles are available with a colored laminate top.

Laminate edging on Taper tops. Edging will match the top surface and is applied before the surface laminate. By applying the laminate in this way, the seam is positioned horizontally, which makes it much less conspicuous and more durable.

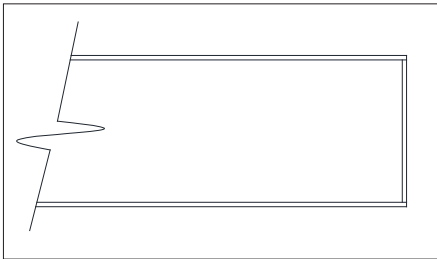
Wood edging on Self and Taper Edge tops are applied before the laminate. By applying the wood edge in this way, the wood edge thickness is concealed, while providing the durability required. Wood species and finishes for edging can be selected from page 8.

For laminates specified outside of Nienkämper’s standard selection, specify the manufacturer as well as the description and model number of the laminate selected at the time of order. For Facet edge tops, the laminate must be a post-forming grade.

Translucent edging on Self and Taper edge tops is applied after the surface laminate. The translucent edge is very durable. Clear translucent edge provides a good match with most white-colored laminates, while a silver translucent edge provides a metallic look and contrast to colored plastic laminates.



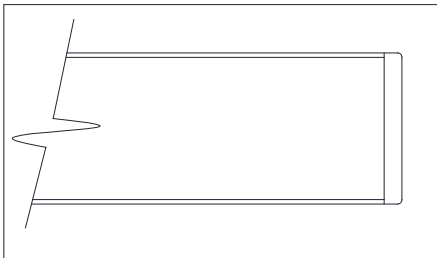
Wood Edge Detail



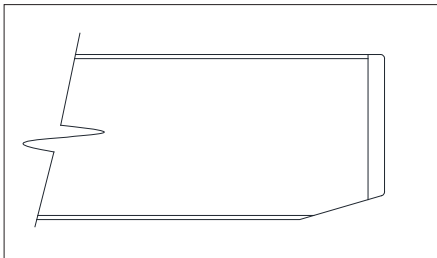
Laminate Edge Detail



Edge Band Detail



Translucent Edge Detail



1 1/4" Thick Self Edge with Translucent Edge Detail

GATEWAY™ COLLECTION FINISHES— POWDER COAT FINISHES

Powder coat paint is a premium finish used for its exceptional durability and refined appearance. Applied as a dry powder and cured under heat, it forms a tough, uniform surface that resists chipping, scratching, and fading—ideal for commercial environments. Nienkämper offers a curated palette of 18 color variations to suit any project.



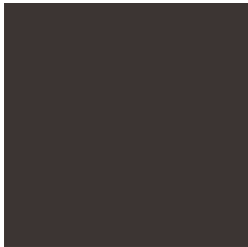
PC-01 Nienkämper Silver



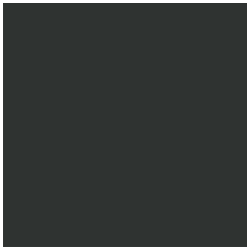
PC-02 Champagne



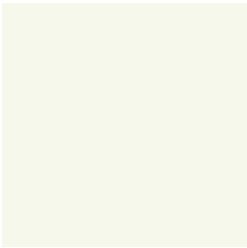
PC-03 Light Bronze



PC-04 Standard (Dark) Bronze



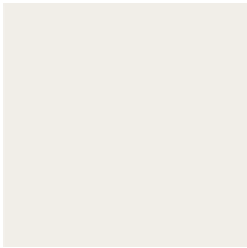
PC-06 Black Jack



PC-07 Warm White



PC-09 Red



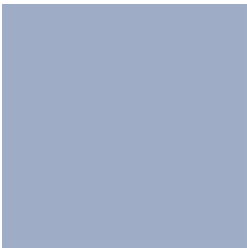
PC-12 Cool White



PC-14 Pure Orange



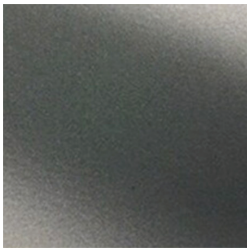
PC-16 Lime



PC-17 Sky Blue



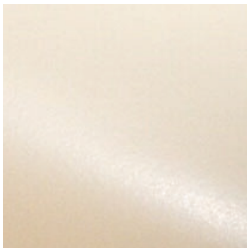
PC-18 Cobalt Blue



PC-22 Charcoal Gray (Matte)



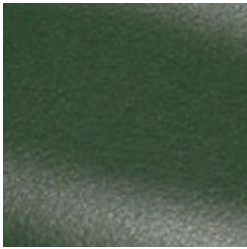
PC-24 Matte Red Clay



PC-25 Cream



PC-26 Mulberry (Matte)



PC-27 Forest Green (Matte)



PC-28 Mustard (Matte)

GATEWAY™ COLLECTION - UPHOLSTERY DETAILS

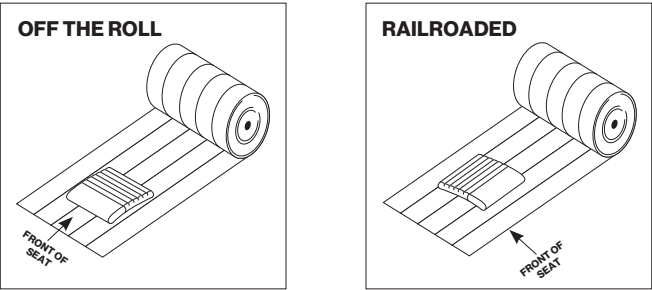
CUSTOMER'S OWN MATERIALS (COM): Nienkämper reserves the right to determine the suitability of a particular COM on our furniture. If we determine, in our judgment, that the COM is inappropriate for use on a particular product we will notify the customer. If you have any questions on the appropriateness of your COM please submit a sample to Customer Service prior to your order.

KNOLL TEXTILES: All Nienkämper seating available in fabric includes pricing for four grades of fabric, see the Knoll Textiles grade columns throughout this book. All fabric orders should be made when ordering the furniture. For Knoll Textiles samples contact the Knoll Textiles Customer Service department at 1.866.565.5858.

All yardage requirements are noted for each model number and option, refer to the pricing charts in this book. All yardage requirements shown in our price list are based on 54" plain material. Fabrics which have a repeat that must be matched, or are less than 54" wide, will require more yardage. Check with Customer Service before ordering. There may be yardage savings for quantity orders of the same model. Check with Customer Service before ordering. ALL COM WILL BE CUT AND APPLIED AT OUR DISCRETION UNLESS SPECIAL CUTTING INSTRUCTIONS ARE INCLUDED IN WRITING WITH THE ORDER. FABRIC PATTERNS SHOULD BE IDENTIFIED AS APPLIED VERTICALLY OR HORIZONTALLY ON A FRAME. WE CANNOT BE HELD RESPONSIBLE FOR RECEIPT OF DEFECTIVE FABRIC AS WE APPLY ALL COM AS FIRST QUALITY GOODS.

| Fabric | Plain | 2" - 14" | 15" - 24" | 25" - 27" | 28" - 36" |
|--------|--------|----------|-----------|-----------|-----------|
| Width | Fabric | Repeat | Repeat | Repeat | Repeat |
| 54" | 0% | 10% | 15% | 20% | 25% |
| 50" | 10% | 20% | 25% | 30% | 35% |
| 48" | 15% | 25% | 30% | 35% | 40% |
| 45" | 40% | 50% | 55% | 60% | 65% |
| 36" | 50% | 60% | 65% | 70% | 75% |

We cannot be held responsible if yardage supplied is insufficient to complete an order.



CUSTOMER'S OWN LEATHER: All furniture listed in this price list that is available with leather has pricing in COL, refer to the COL column throughout this book. Leather is applied to avoid scars, however, some markings are inherent in this natural material. Square footage requirements are based on cow hides measuring 50 sq.ft. per hide. Consult Nienkämper's Customer Service Department for square footage requirements before ordering when using hides that do not meet these requirements. Application instructions must accompany all COL orders. In the absence of these instructions Nienkämper will determine the best method of upholstery.

SENDING YOUR MATERIALS:

For Canada
Customer supplied material must be sent prepaid to:

Nienkämper International, Inc.
257 Finchdene Square
Toronto, Ontario
Canada M1X 1B9

From all locations outside of Canada
Customer supplied material must be sent prepaid to:

Willson International Limited
c/o Nienkämper
257 Finchdene Square
Toronto, Ontario
Canada M1X 1B9

All packages must include a copy of a commercial invoice showing the exact yardage, value and fibre content of the fabric and must indicate our order confirmation number, or customer's purchase order number, and the furniture for which it is intended.

GATEWAY™ COLLECTION - UPHOLSTERY DETAILS

An index of KnollTextiles fabric follows. Contact KnollTextiles customer service at 1.800.237.1625 for an updated listing. For fabric not graded in, please contact customer service for pricing.

ALPHABETICAL INDEX:

| CATEGORY 1 | |
|----------------|--------|
| Attire | 466933 |
| Boundary* | 466735 |
| Brigadoon* | 466914 |
| Calypso | 466748 |
| Chameleon* | 466929 |
| Color Field* | 466712 |
| Commuter Cloth | 466879 |
| Contour* | 466950 |
| Cozy Cord* | 466938 |
| Crossroad | 466672 |
| Day Tripper | 466913 |
| Delite | 466730 |
| Diva | 466722 |
| Dottie | 466799 |
| Entwine | 466937 |
| Facet* | 466804 |
| Ferry | 466850 |
| Hourglass | 466846 |
| Infinite | 466734 |
| Instinct | 466921 |
| Journey | 466866 |
| Keaton | 466851 |
| Knoll Hopsack | 466729 |
| Little Devil | 466916 |
| Oh La La | 466671 |
| Olympia | 466808 |
| Plaid On* | 466947 |
| Prairie* | 466762 |
| Prestini* | 466953 |
| Puff | 466726 |
| Reflect* | 466927 |
| Rush Hour II | 466706 |
| Shadow Play* | 466759 |
| Sonnet | 466909 |
| Summit | 466694 |
| Tinge* | 466721 |
| Topos* | 466800 |
| Uni-Form | 466935 |
| Utopia* | 466867 |
| Venue | 466756 |
| Vibe II* | 466718 |
| Westwood* | 466757 |
| Wild Thing* | 466779 |

| CATEGORY 2 | |
|---------------|--------|
| Aegean | 466769 |
| Atlas* | 466702 |
| Aurora, 1985 | 466954 |
| Buzz | 466719 |
| Charm | 466833 |
| Circle Point* | 466942 |
| Cleo | 466910 |
| Code | 466736 |
| Currents* | 466951 |
| Dactyl* | 466673 |
| Durand* | 466895 |
| Flower Power | 466946 |
| Greenwich* | 466878 |
| Homage* | 466943 |
| Hudson* | 466889 |
| Hummingbird | 466956 |
| Island* | 466765 |
| Knoll Felt | 466830 |
| Magnolia* | 466786 |
| Midpoint | 466789 |
| Nature Walk* | 466770 |
| Off the Grid | 466725 |
| On Point* | 466802 |
| Palisade* | 466763 |
| Patchwork* | 466801 |
| Pathway* | 466941 |
| Placid* | 466949 |
| Plaidtastic* | 466798 |
| Premier* | 466920 |
| Pullman | 466917 |
| Rebel | 466922 |
| Retreat* | 466944 |
| Seurat | 466811 |
| Smart | 466853 |
| Tempest | 466724 |
| Texnet* | 466760 |
| Tight Rope* | 466767 |
| Utmost II | 466931 |
| Vice Versa* | 466925 |
| Whip* | 466842 |
| Wit* | 466902 |
| Woodland II* | 466723 |
| Wow Factor | 466720 |

* Fabric with "*" is Bleach Cleanable

GATEWAY™ COLLECTION - UPHOLSTERY DETAILS

An index of KnollTextiles follows. Contact KnollTextiles customer service at 1.800.237.1625 for an updated listing. For fabric not graded in, please contact customer service for pricing.

ALPHABETICAL INDEX:

| CATEGORY 3 | |
|-------------------|--------|
| Alter Ego | 466792 |
| Arrondissement | 466711 |
| Atelier | 466882 |
| Biscayne | 466890 |
| Cameo | 466674 |
| Circa | 466753 |
| Classic Boucle | 466777 |
| Color Collage | 466716 |
| Dapper | 466803 |
| Eclat Weave | 466773 |
| Fancy Twill | 466717 |
| Feeling Plaid | 466794 |
| Ikat Square | 466873 |
| Imprint | 466923 |
| In Stitches | 466908 |
| It's Complicated* | 466771 |
| Looped In | 466948 |
| Melange | 466696 |
| Mod Plaid | 466883 |
| Modern Tweed | 466795 |
| Rivers | 466806 |
| Sherman | 466841 |
| Twist Tie | 466701 |
| Ultrasuede | 466793 |
| Vert | 466955 |

| CATEGORY 4 | |
|----------------|--------|
| Amore | 466905 |
| Arezzo | 466776 |
| Catwalk | 466907 |
| Chiseled | 466919 |
| Firefly | 466901 |
| Floressence | 466924 |
| In Step | 466928 |
| Rivington | 466939 |
| Stretch Appeal | 466871 |
| Striae Stripe | 466930 |
| Stripe It* | 466683 |
| Tara | 466926 |
| Utrillo | 466945 |
| World Piece | 466713 |

| NOT GRADED IN | |
|---------------|--------|
| Chic | 466932 |
| Prince Hairy | 466710 |
| Guise | 466862 |
| Cato | 466934 |
| Dynamic | 466709 |
| Cummings | 466816 |
| Sandis | 466807 |
| North Island | 466845 |
| Digi Velvet | 466727 |
| Knoll Velvet | 466693 |
| Bella | 466780 |
| Byron | 466906 |
| Doily | 466707 |
| Limani | 466704 |
| Ita | 466715 |
| Lowell LUXE | 466915 |

* Fabric with “*” is Bleach Cleanable

GATEWAY™ COLLECTION - UPHOLSTERY DETAILS

An index of KnollTextiles follows. Contact KnollTextiles customer service at 1.800.237.1625 for an updated listing. For fabric not graded in, please contact customer service for pricing.

NUMERICAL INDEX:

| CATEGORY 1 | |
|----------------|--------|
| Oh La La | 466671 |
| Crossroad | 466672 |
| Summit | 466694 |
| Rush Hour II | 466706 |
| Color Field* | 466712 |
| Vibe II* | 466718 |
| Tinge* | 466721 |
| Diva | 466722 |
| Puff | 466726 |
| Knoll Hopsack | 466729 |
| Delite | 466730 |
| Infinite | 466734 |
| Boundary* | 466735 |
| Calypso | 466748 |
| Venue | 466756 |
| Westwood* | 466757 |
| Shadow Play* | 466759 |
| Prairie* | 466762 |
| Wild Thing* | 466779 |
| Dottie | 466799 |
| Topos* | 466800 |
| Facet* | 466804 |
| Olympia | 466808 |
| Hourglass | 466846 |
| Ferry | 466850 |
| Keaton | 466851 |
| Journey | 466866 |
| Utopia* | 466867 |
| Commuter Cloth | 466879 |
| Sonnet | 466909 |
| Day Tripper | 466913 |
| Brigadoon* | 466914 |
| Little Devil | 466916 |
| Instinct | 466921 |
| Reflect* | 466927 |
| Chameleon* | 466929 |
| Attire | 466933 |
| Uni-Form | 466935 |
| Entwine | 466937 |
| Cozy Cord* | 466938 |
| Plaid On* | 466947 |
| Contour* | 466950 |
| Prestini* | 466953 |

| CATEGORY 2 | |
|---------------|--------|
| Dactyl* | 466673 |
| Atlas* | 466702 |
| Buzz | 466719 |
| Wow Factor | 466720 |
| Woodland II* | 466723 |
| Tempest | 466724 |
| Off the Grid | 466725 |
| Code | 466736 |
| Texnet* | 466760 |
| Palisade* | 466763 |
| Island* | 466765 |
| Tight Rope* | 466767 |
| Aegean | 466769 |
| Nature Walk* | 466770 |
| Magnolia* | 466786 |
| Midpoint | 466789 |
| Plaidtastic* | 466798 |
| Patchwork* | 466801 |
| On Point* | 466802 |
| Seurat | 466811 |
| Knoll Felt | 466830 |
| Charm | 466833 |
| Whip* | 466842 |
| Smart | 466853 |
| Greenwich* | 466878 |
| Hudson* | 466889 |
| Durand* | 466895 |
| Wit* | 466902 |
| Cleo | 466910 |
| Pullman | 466917 |
| Premier* | 466920 |
| Rebel | 466922 |
| Vice Versa* | 466925 |
| Utmost II | 466931 |
| Pathway* | 466941 |
| Circle Point* | 466942 |
| Homage* | 466943 |
| Retreat* | 466944 |
| Flower Power | 466946 |
| Placid* | 466949 |
| Currents* | 466951 |
| Aurora, 1985 | 466954 |
| Hummingbird | 466956 |

* Fabric with “*” is Bleach Cleanable

GATEWAY™ MEDIA WALL TABLE BASES



Standard Fixed Height Gateway Base
Cable Exit Through Column and Base



Heavy Duty Steel Post for Standing Height Gateway Tables
Cable Exit Through Column and Base



High Wire Capacity Fixed Height Gateway Base
Cable Exit Through Column in 2 locations & Base



Height Adjustable Gateway Base
No Cable Pass Through

GATEWAY™ MEDIA WALL TABLES WIRING STRAIGHT MEDIA WALLS

Gateway monitor adapter included.
Curved Media Screen only.
Accepts most flat panel TV mounts.
Monitor and wall mount by others.

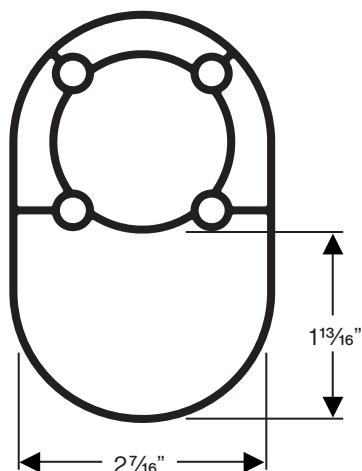
Monitor power and HDMI cables
are channeled through the screen.

Surge suppressor with 5
receptacles included.

Vox® Forum plugs into
surge suppressor.
Vox® Forum specified
and priced separately.

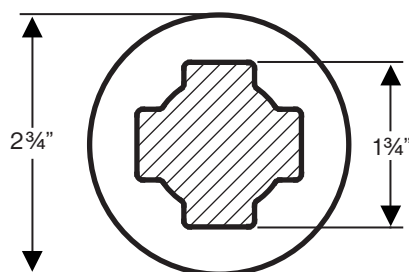
Vox® Forum cable cubby,
specify when ordering Vox® Forum.
For even more wire capacity, select a
telescopic wire pan & cable conduit kit.
See details on page 50

Run the Surge suppressor
power cord through base.



Large capacity post (not to scale)

* Contact customer service for further details.

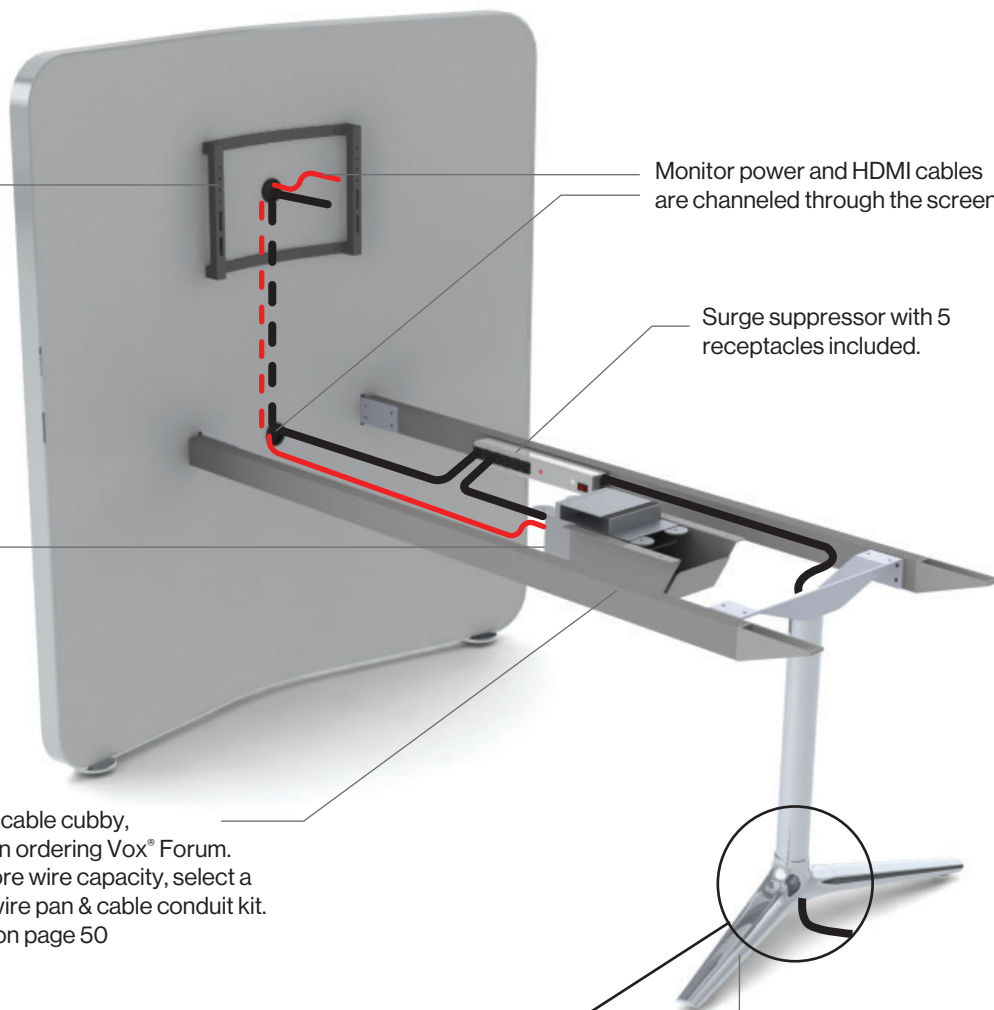


Cable access in standard base (not to scale)

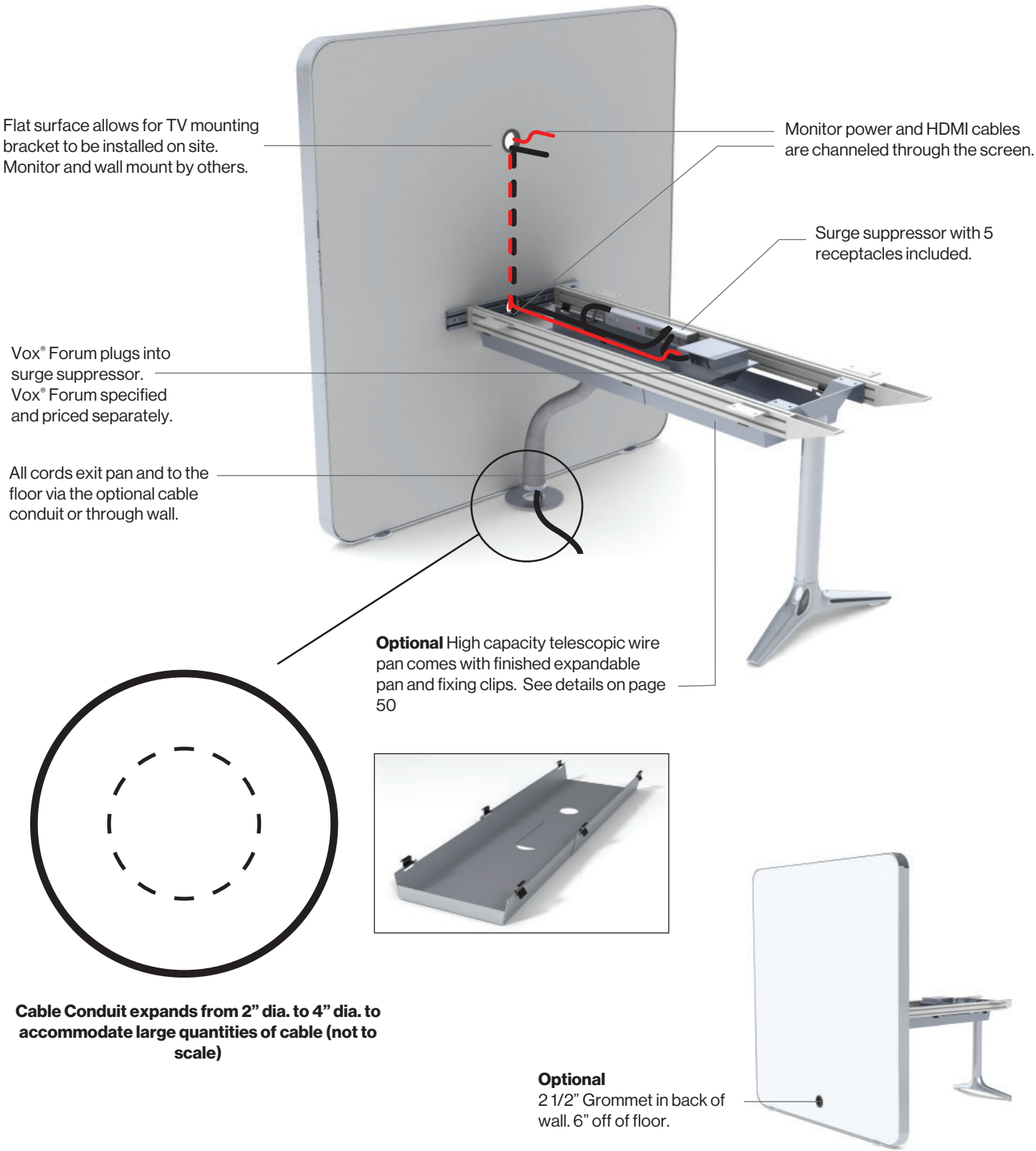
Optional

2 1/2" Grommet in back of wall.
6" off of floor.

Optional cable access at back of panel needs to be specified when
ordering. Standard Gateway media walls do not come with grommet in
back of wall.



GATEWAY™ MEDIA WALL TABLES
WIRING STRAIGHT MEDIA WALLS



Optional cable access at back of panel needs to be specified when ordering
Standard Gateway media walls do not come with grommet in back of wall.

GATEWAY™ MEDIA WALL TABLES

WIRING HEIGHT ADJUSTABLE MEDIA WALLS

Gateway Table Top TV Bracket allows the Monitor to ride up and down with the Table (height adjustable models only). Accepts most flat panel TV mounts. Monitor and wall mount by others.

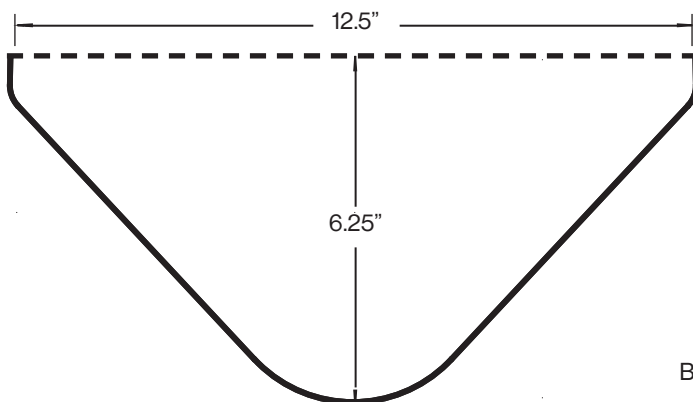
Vox® Forum plugs into surge suppressor. Vox® Forum specified and priced separately.

A removable shroud conceals cables exiting and hides floor power. * shroud shown semi transparent for wiring clarity, actual component is powder coated silver (PC-01) metal.*

Monitor power and HDMI cables are channeled through the TV and into the screen via the slide grommet which allows cabling to move freely with the TV.

Height adjustable power cable plugs into surge suppressor

Surge suppressor with 5 receptacles included.



Cable Shroud foot print (not to scale)

* Contact customer service for further details.

Back Panel is removable.

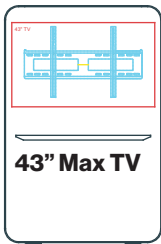
Optional

2½" Grommet in back of wall. 6" off of floor.

Optional cable access at back of panel needs to be specified when ordering. Standard Gateway media walls do not come with grommet in back of wall.

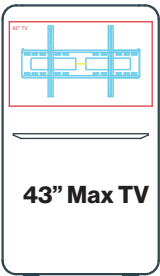
GATEWAY™ MEDIA WALL
MAXIMUM TELEVISION SIZES

42"



43" Max TV

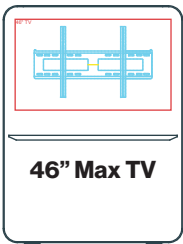
63" h



43" Max TV

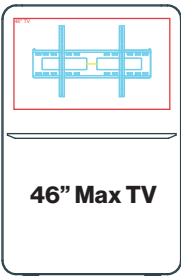
72" h

48"



46" Max TV

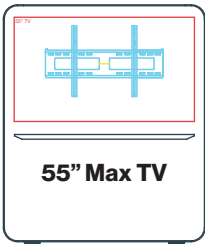
63" h



46" Max TV

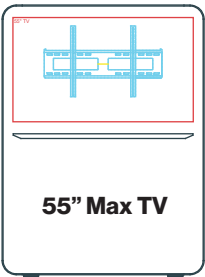
72" h

54"



55" Max TV

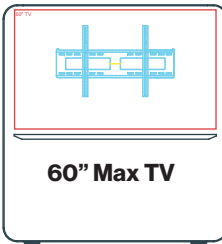
63" h



55" Max TV

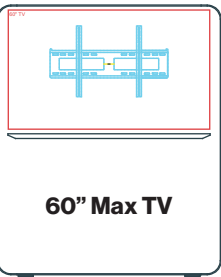
72" h

60"



60" Max TV

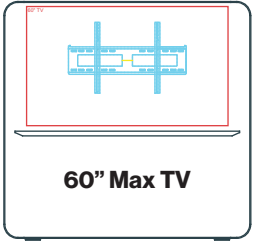
63" h



60" Max TV

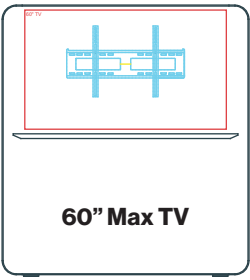
72" h

66"



60" Max TV

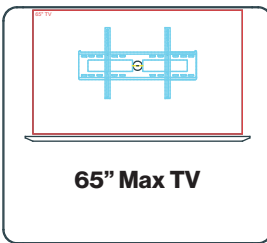
63" h



60" Max TV

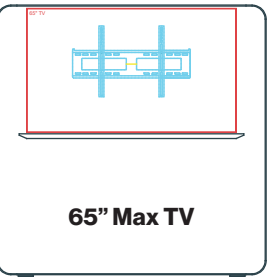
72" h

72"



65" Max TV

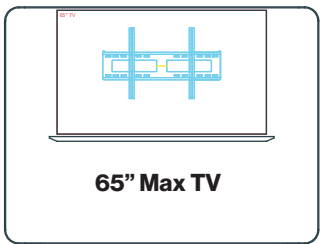
63" h



65" Max TV

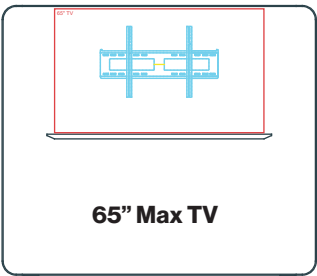
72" h

84"



65" Max TV

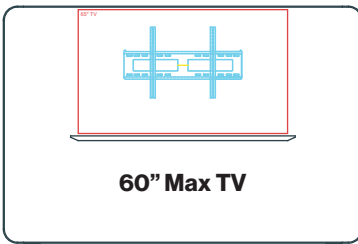
63" h



65" Max TV

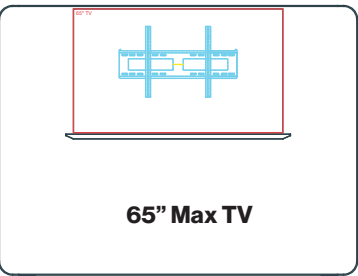
72" h

96"



60" Max TV

63" h

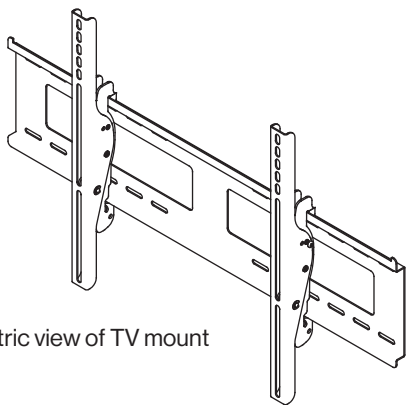


65" Max TV

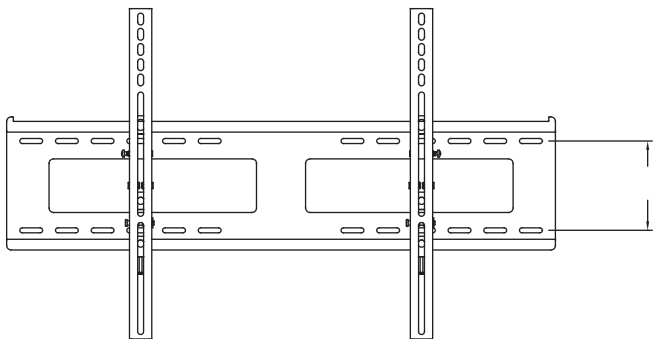
72" h

GATEWAY™ MEDIA WALL TABLES

TV WALL MOUNT BRACKETS



Isometric view of TV mount



Elevation view of TV mount

Gateway screen accepts all manufacturers low profile
Flat or tilting mount with a mounting hole
Spacing distance from 2" to 8¾".

Low profile mounts approved for use with Gateway
Screens are listed below.

| | |
|-------|-----------------------------------------|
| Atdec | TH-3050-RW TH-3060-UT TH-3070 UTP |
|-------|-----------------------------------------|

| | |
|------------|----------------------------|
| Rocketfish | RF-TVMLPT03 RF-TVMLPT02 |
|------------|----------------------------|

| | |
|-------|----------------------------------|
| Sanus | LT25 LL22 VLT35 VMPL50A |
|-------|----------------------------------|

| | |
|-------|------------------------------------------------------------------------------------------------------|
| Sonax | F-101-MTM F-102-MTM F-102-MPM F-103-MPM K-505-MPM K-OO5-MPM M-415-MPM M-515-MPM |
|-------|------------------------------------------------------------------------------------------------------|

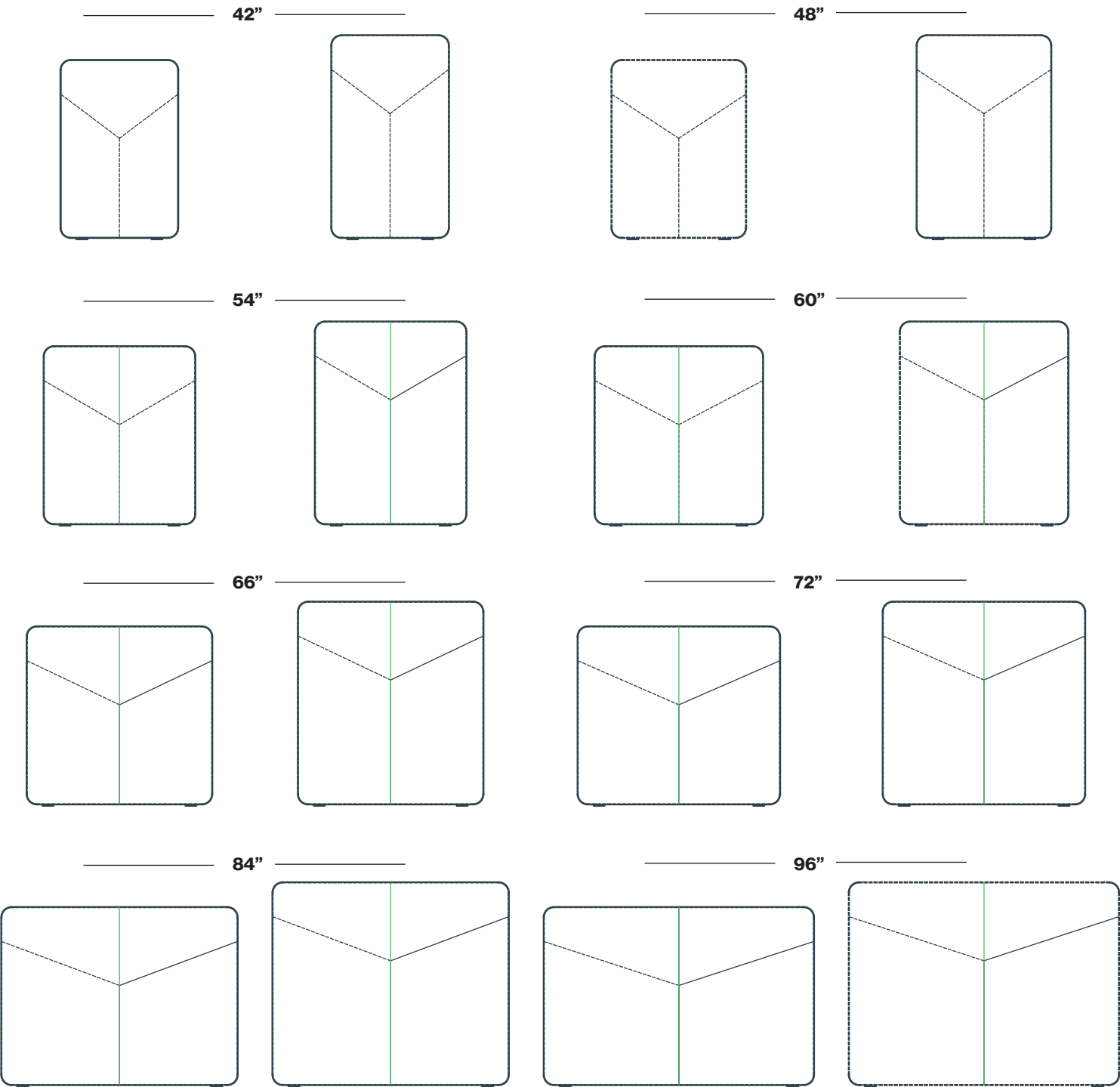
Please contact customer service if the flat panel mount
you have selected is not listed.

GATEWAY™ MEDIA WALL
FABRIC, VENEER & PLASTIC LAMINATE PANELS

All fabric panels have “Y” seam detail as shown to maximize fabric yield. This seam detail starts 12” down from the top of the panel and joins at 27½”. Panels over 60” will have 2 panels.

Veneer & Plastic Laminate panels over 60” wide will have 2 panels.

When specifying custom fabric, veneer or plastic laminate always check with customer service to be sure your material is compatible.



GATEWAY™ MEDIA WALL TABLES



Curved Media Wall 58" w with standard height 29" h Vista table



Curved Media Wall 48" w with standing height 38" h Vista table



Straight Media Wall 60" w with standard height 29" h Vista table



Straight Media Wall 60" w with standard height 29" h Vista table



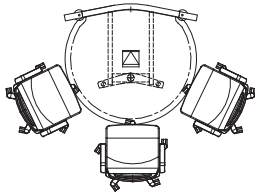
Straight Media Wall 60" w with height adjustable Vista table.



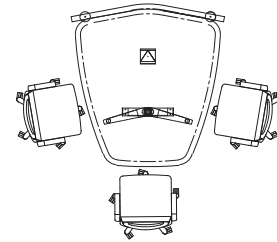
Straight Media Wall 60" w with height adjustable Vista table.

GATEWAY™ MEDIA WALL TABLES LAYOUT

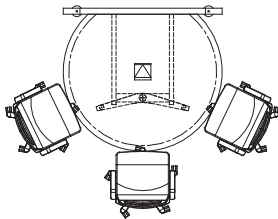
Gateway® Round Table with
Curved Media Screen Table 48" dia., Screen 48"w



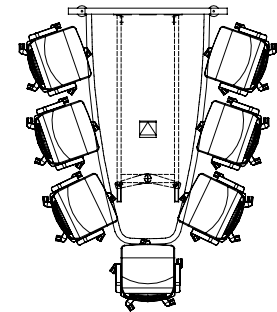
Gateway® Vista Table with
Curved Media Screen Table 60"l, Screen 58"w



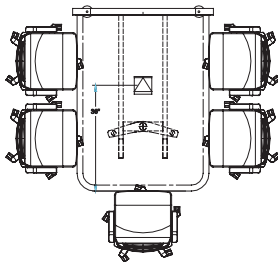
Gateway® Round Table with
Straight Media Screen Table 54" dia., Screen 60"w



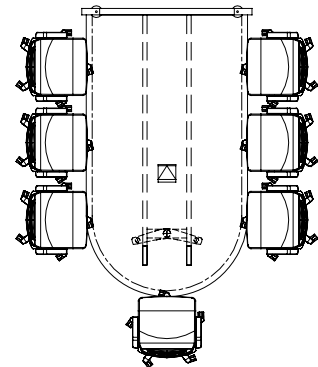
Gateway® Vista Table with
Straight Media Screen Table 84"l, Screen 60"w



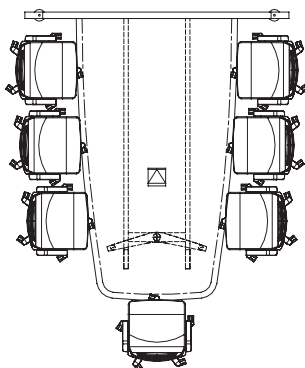
Gateway® Rectangle with Soft Corner Table with
Straight Media Screen Table 60"l, Screen 48"w



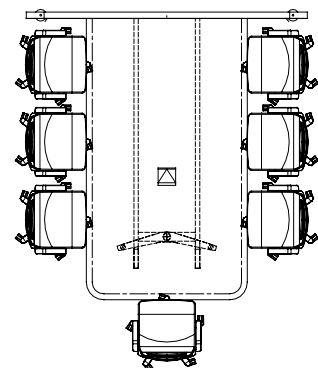
Gateway® D End Table with
Straight Media Screen Table 96"l, Screen 60"w



Gateway® Vista Table with
Straight Media Screen Table 84"l, Screen 96"w



Gateway® Rectangle with Soft Corners with
Straight Media Screen Table 96"l, Screen 96"w



- See page 25 for TV / Media Screen size suggestions.
- Flat panel monitors and mounting brackets to be supplied by customer and are not included in table pricing.
- Connectivity devices are to be ordered separately and cost is not reflected in table pricing. Refer to pages 64-75, 94-104, 117 for more information.

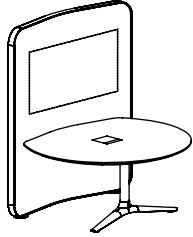
GATEWAY™ MEDIA WALL TABLES

CURVED MEDIA WALL TABLES - ROUND TOP

— US ONLY —

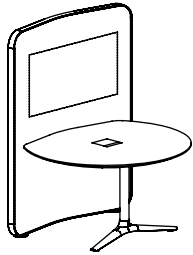
| | Model Number | Table Dimensions | Media Wall Dimensions | Top Finish | Fabric Yrd | List Price | |
|--|--------------|------------------|-----------------------|------------|------------|------------|-----------------|
| | | | | | | COM | KnollTextiles 1 |

Table with Curved Media Wall: 22" Lounge Height



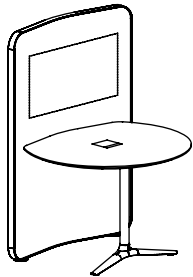
| | | | | | | |
|----------------|----------------------|--------------------|-----------------|----------|---------------|---------------|
| 42201/2 | 48"dia x 22"h | 48"w x 56"h | Veneer | 4 | 15,660 | 16,120 |
| 42201/5 | 48"dia x 22"h | 48"w x 56"h | Laminate | 4 | 14,800 | 15,265 |
| 42202/2 | 58"dia x 22"h | 58"w x 56"h | Veneer | 5 | 16,810 | 17,380 |
| 42202/5 | 58"dia x 22"h | 58"w x 56"h | Laminate | 5 | 15,490 | 16,060 |

Table with Curved Media Wall: 29" Standard Work Height



| | | | | | | |
|----------------|----------------------|--------------------|-----------------|-----------|---------------|---------------|
| 42203/2 | 48"dia x 29"h | 48"w x 63"h | Veneer | 4 | 15,980 | 16,440 |
| 42203/5 | 48"dia x 29"h | 48"w x 63"h | Laminate | 4 | 15,115 | 15,580 |
| 42204/2 | 58"dia x 29"h | 58"w x 63"h | Veneer | 6½ | 17,115 | 17,865 |
| 42204/5 | 58"dia x 29"h | 58"w x 63"h | Laminate | 6½ | 15,810 | 16,555 |

Table with Curved Media Wall: 38" Standing Height





| | | | | | | |
|----------------|----------------------|--------------------|-----------------|-----------|---------------|---------------|
| 42205/2 | 48"dia x 38"h | 48"w x 72"h | Veneer | 5 | 16,310 | 16,880 |
| 42205/5 | 48"dia x 38"h | 48"w x 72"h | Laminate | 5 | 15,400 | 15,975 |
| 42206/2 | 58"dia x 38"h | 58"w x 72"h | Veneer | 7½ | 17,465 | 18,325 |
| 42206/5 | 58"dia x 38"h | 58"w x 72"h | Laminate | 7½ | 16,120 | 16,980 |

- 48" wide Gateway Media Wall accommodates a maximum monitor of 46".
- 58" wide Gateway Media Wall accommodates a maximum monitor of 60".
- For Curved Media Screen, Nienkämper provides a monitor adaptor to receive client's TV mounting brackets.
- Flat panel monitors and mounting brackets to be supplied by customer and are not included in table pricing.
- Connectivity devices are to be ordered separately and cost is not reflected in table pricing. Refer to pages 64-75, 94-104, 117 for more information.

GATEWAY™ MEDIA WALL TABLES

CURVED MEDIA WALL TABLES - RECTANGULAR WITH SOFT CORNER TOP

— US ONLY —

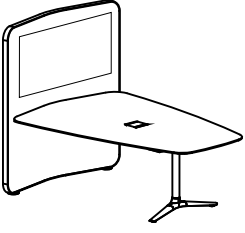
| | Model Number | Table Dimensions | Media Wall Dimensions | Top Finish | Fabric Yrd | List Price | |
|----------------------------------------------------------------------------------------------------------------------------------------------------|-------------------|------------------------------------|-----------------------|-----------------|------------|---------------|-----------------|
| | | | | | | COM | KnollTextiles 1 |
| Table with Curved Media Wall: 29" Standard Work Height  | 42207/2S29 | 60"l x 45"w x 29"h | 48"w x 63"h | Veneer | 4 | 16,585 | 17,050 |
| | 42207/5S29 | 60"l x 45"w x 29"h | 48"w x 63"h | Laminate | 4 | 15,420 | 15,885 |
| | 42211/2S29 | 60"l x 55"w x 29"h | 58"w x 63"h | Veneer | 6½ | 17,415 | 18,160 |
| | 42211/5S29 | 60"l x 55"w x 29"h | 58"w x 63"h | Laminate | 6½ | 16,200 | 16,945 |
| | 42208/2S29 | 72"l x 45"w x 29"h | 48"w x 63"h | Veneer | 4 | 17,580 | 18,040 |
| | 42208/5S29 | 72"l x 45"w x 29"h | 48"w x 63"h | Laminate | 4 | 16,355 | 16,820 |
| | 42212/2S29 | 72"l x 55"w x 29"h | 58"w x 63"h | Veneer | 6½ | 18,460 | 19,205 |
| | 42212/5S29 | 72"l x 55"w x 29"h | 58"w x 63"h | Laminate | 6½ | 17,175 | 17,920 |
| | 42209/2S29 | 84"l x 45"w x 29"h | 48"w x 63"h | Veneer | 4 | 18,635 | 19,095 |
| | 42209/5S29 | 84"l x 45"w x 29"h | 48"w x 63"h | Laminate | 4 | 17,340 | 17,800 |
| | 42213/2S29 | 84"l x 55"w x 29"h | 58"w x 63"h | Veneer | 6½ | 19,565 | 20,310 |
| | 42213/5S29 | 84"l x 55"w x 29"h | 58"w x 63"h | Laminate | 6½ | 18,210 | 18,955 |
| | 42210/2S29 | 96"l x 45"w x 29"h | 48"w x 63"h | Veneer | 4 | 19,760 | 20,220 |
| | 42210/5S29 | 96"l x 45"w x 29"h | 48"w x 63"h | Laminate | 4 | 18,385 | 18,845 |
| | 42220/2S29 | 96"l x 55"w x 29"h | 58"w x 63"h | Veneer | 6½ | 20,750 | 21,495 |
| | 42220/5S29 | 96"l x 55"w x 29"h | 58"w x 63"h | Laminate | 6½ | 19,295 | 20,040 |
| Table with Curved Media Wall: 38" Standing Height  | 42214/2S38 | 60"l x (21¾" - 45")w x 38"h | 48"w x 72"h | Veneer | 5 | 17,415 | 17,990 |
| | 42214/5S38 | 60"l x (21¾" - 45")w x 38"h | 48"w x 72"h | Laminate | 5 | 16,200 | 16,770 |
| | 42217/2S38 | 60"l x (32" - 55")w x 38"h | 58"w x 72"h | Veneer | 7½ | 18,285 | 19,145 |
| | 42217/5S38 | 60"l x (32" - 55")w x 38"h | 58"w x 72"h | Laminate | 7½ | 17,010 | 17,875 |
| | 42215/2S38 | 72"l x (21¾" - 45")w x 38"h | 48"w x 72"h | Veneer | 5 | 18,460 | 19,035 |
| | 42215/5S38 | 72"l x (21¾" - 45")w x 38"h | 48"w x 72"h | Laminate | 5 | 17,175 | 17,745 |
| | 42218/2S38 | 72"l x (32" - 55")w x 38"h | 58"w x 72"h | Veneer | 7½ | 19,385 | 20,245 |
| | 42218/5S38 | 72"l x (32" - 55")w x 38"h | 58"w x 72"h | Laminate | 7½ | 18,035 | 18,895 |
| | 42216/2S38 | 84"l x (21¾" - 45")w x 38"h | 48"w x 72"h | Veneer | 5 | 19,565 | 20,135 |
| | 42216/5S38 | 84"l x (21¾" - 45")w x 38"h | 48"w x 72"h | Laminate | 5 | 18,210 | 18,780 |
| | 42219/2S38 | 84"l x (32" - 55")w x 38"h | 58"w x 72"h | Veneer | 7½ | 20,550 | 21,410 |
| | 42219/5S38 | 84"l x (32" - 55")w x 38"h | 58"w x 72"h | Laminate | 7½ | 19,125 | 19,985 |
| | 42230/2S38 | 96"l x (21¾" - 45")w x 38"h | 48"w x 72"h | Veneer | 5 | 20,750 | 21,325 |
| | 42230/5S38 | 96"l x (21¾" - 45")w x 38"h | 48"w x 72"h | Laminate | 5 | 19,295 | 19,870 |
| | 42240/2S38 | 96"l x (32" - 55")w x 38"h | 58"w x 72"h | Veneer | 7½ | 21,790 | 22,650 |
| | 42240/5S38 | 96"l x (32" - 55")w x 38"h | 58"w x 72"h | Veneer | 7½ | 20,275 | 21,135 |

- 48" wide Gateway Media Wall accommodates a maximum monitor of 46".
- 58" wide Gateway Media Wall accommodates a maximum monitor of 60".
- For Curved Media Screen, Nienkämper provides a monitor adapter to receive client's TV mounting brackets.
- Flat panel monitors and mounting brackets to be supplied by customer and are not included in table pricing.
- Connectivity devices are to be ordered separately and cost is not reflected in table pricing. Refer to page 64-75, 94-104, 117 for more information.
- Custom sizes available contact customer service for more information.

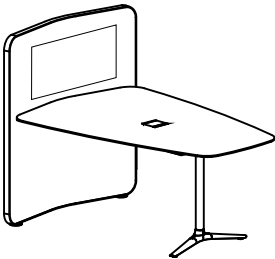
GATEWAY™ MEDIA WALL TABLES

CURVED MEDIA WALL TABLES - VISTA TOP

— US ONLY —

| | Model Number | Table Dimensions | Media Wall Dimensions | Top Finish | Fabric Yrd | List Price | |
|-----------------------------------------------------------------------------------------------------------------------------------------------------|----------------|------------------------------------|-----------------------|-----------------|------------|---------------|-----------------|
| | | | | | | COM | KnollTextiles 1 |
| Table with Curved Media Wall: 29" Standard Work Height  | 42207/2 | 60"l x (21¾" - 45")w x 29"h | 48"w x 63"h | Veneer | 4 | 17,000 | 17,465 |
| | 42207/5 | 60"l x (21¾" - 45")w x 29"h | 48"w x 63"h | Laminate | 4 | 15,810 | 16,270 |
| | 42211/2 | 60"l x (32" - 55")w x 29"h | 58"w x 63"h | Veneer | 6½ | 17,850 | 18,600 |
| | 42211/5 | 60"l x (32" - 55")w x 29"h | 58"w x 63"h | Laminate | 6½ | 16,610 | 17,355 |
| | 42208/2 | 72"l x (21¾" - 45")w x 29"h | 48"w x 63"h | Veneer | 4 | 18,025 | 18,490 |
| | 42208/5 | 72"l x (21¾" - 45")w x 29"h | 48"w x 63"h | Laminate | 4 | 16,760 | 17,220 |
| | 42212/2 | 72"l x (32" - 55")w x 29"h | 58"w x 63"h | Veneer | 6½ | 18,925 | 19,670 |
| | 42212/5 | 72"l x (32" - 55")w x 29"h | 58"w x 63"h | Laminate | 6½ | 17,600 | 18,345 |
| | 42209/2 | 84"l x (21¾" - 45")w x 29"h | 48"w x 63"h | Veneer | 4 | 19,105 | 19,570 |
| | 42209/5 | 84"l x (21¾" - 45")w x 29"h | 48"w x 63"h | Laminate | 4 | 17,780 | 18,240 |
| | 42213/2 | 84"l x (32" - 55")w x 29"h | 58"w x 63"h | Veneer | 6½ | 20,065 | 20,810 |
| | 42213/5 | 84"l x (32" - 55")w x 29"h | 58"w x 63"h | Laminate | 6½ | 18,665 | 19,410 |
| | 42210/2 | 96"l x (21¾" - 45")w x 29"h | 48"w x 63"h | Veneer | 4 | 20,245 | 20,710 |
| | 42210/5 | 96"l x (21¾" - 45")w x 29"h | 48"w x 63"h | Laminate | 4 | 18,840 | 19,300 |
| | 42220/2 | 96"l x (32" - 55")w x 29"h | 58"w x 63"h | Veneer | 6½ | 21,260 | 22,005 |
| | 42220/5 | 96"l x (32" - 55")w x 29"h | 58"w x 63"h | Laminate | 6½ | 19,785 | 20,530 |

**Table with Curved Media Wall:
38" Standing Height**



| | | | | | | |
|-------------------|------------------------------------|--------------------|-----------------|-----------|---------------|---------------|
| 42214/2V38 | 60"l x (21¾" - 45")w x 38"h | 48"w x 72"h | Veneer | 5 | 17,850 | 18,425 |
| 42214/5V38 | 60"l x (21¾" - 45")w x 38"h | 48"w x 72"h | Laminate | 5 | 16,610 | 17,180 |
| 42217/2V38 | 60"l x (32" - 55")w x 38"h | 58"w x 72"h | Veneer | 7½ | 18,740 | 19,600 |
| 42217/5V38 | 60"l x (32" - 55")w x 38"h | 58"w x 72"h | Laminate | 7½ | 17,445 | 18,305 |
| 42215/2V38 | 72"l x (21¾" - 45")w x 38"h | 48"w x 72"h | Veneer | 5 | 18,925 | 19,495 |
| 42215/5V38 | 72"l x (21¾" - 45")w x 38"h | 48"w x 72"h | Laminate | 5 | 17,600 | 18,175 |
| 42218/2V38 | 72"l x (32" - 55")w x 38"h | 58"w x 72"h | Veneer | 7½ | 19,880 | 20,740 |
| 42218/5V38 | 72"l x (32" - 55")w x 38"h | 58"w x 72"h | Laminate | 7½ | 18,480 | 19,345 |
| 42216/2V38 | 84"l x (21¾" - 45")w x 38"h | 48"w x 72"h | Veneer | 5 | 20,065 | 20,635 |
| 42216/5V38 | 84"l x (21¾" - 45")w x 38"h | 48"w x 72"h | Laminate | 5 | 18,665 | 19,240 |
| 42219/2V38 | 84"l x (32" - 55")w x 38"h | 58"w x 72"h | Veneer | 7½ | 21,070 | 21,930 |
| 42219/5V38 | 84"l x (32" - 55")w x 38"h | 58"w x 72"h | Laminate | 7½ | 19,600 | 20,460 |
| 42230/2V38 | 96"l x (21¾" - 45")w x 38"h | 48"w x 72"h | Veneer | 5 | 21,260 | 21,830 |
| 42230/5V38 | 96"l x (21¾" - 45")w x 38"h | 48"w x 72"h | Laminate | 5 | 19,785 | 20,355 |
| 42240/2V38 | 96"l x (32" - 55")w x 38"h | 58"w x 72"h | Veneer | 7½ | 22,325 | 23,185 |
| 42240/5V38 | 96"l x (32" - 55")w x 38"h | 58"w x 72"h | Laminate | 7½ | 20,775 | 21,640 |

- 48" wide Gateway Media Wall accommodates a maximum monitor of 46".
- 58" wide Gateway Media Wall accommodates a maximum monitor of 60".
- For Curved Media Screen, Nienkämper provides a monitor adapter to receive client's TV mounting brackets.
- Flat panel monitors and mounting brackets to be supplied by customer and are not included in table pricing.
- Connectivity devices are to be ordered separately and cost is not reflected in table pricing. Refer to page 64-74, 94-104, 117 for more information.
- Custom sizes available contact customer service for more information.

GATEWAY™ MEDIA WALL TABLES

CURVED MEDIA WALL TABLES - D-END TOP

— US ONLY —


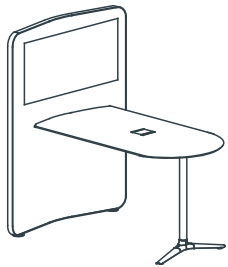
| | Model Number | Table Dimensions | Media Wall Dimensions | Top Finish | Fabric Yrd | List Price | |
|-------------------------------------------------------------------------------------------------------------------------------------------------|-------------------|---------------------------|-----------------------|-----------------|------------|---------------|-----------------|
| | | | | | | COM | KnollTextiles 1 |
| Table with Curved Media Wall: 29" Standard Work Height  | 42207/2D29 | 60"l x 45"w x 29"h | 48"w x 63"h | Veneer | 4 | 17,430 | 17,895 |
| | 42207/5D29 | 60"l x 45"w x 29"h | 48"w x 63"h | Laminate | 4 | 16,205 | 16,665 |
| | 42211/2D29 | 60"l x 55"w x 29"h | 58"w x 63"h | Veneer | 6½ | 18,295 | 19,040 |
| | 42211/5D29 | 60"l x 55"w x 29"h | 58"w x 63"h | Laminate | 6½ | 17,020 | 17,765 |
| | 42208/2D29 | 72"l x 45"w x 29"h | 48"w x 63"h | Veneer | 4 | 18,470 | 18,935 |
| | 42208/5D29 | 72"l x 45"w x 29"h | 48"w x 63"h | Laminate | 4 | 17,185 | 17,650 |
| | 42212/2D29 | 72"l x 55"w x 29"h | 58"w x 63"h | Veneer | 6½ | 19,395 | 20,140 |
| | 42212/5D29 | 72"l x 55"w x 29"h | 58"w x 63"h | Laminate | 6½ | 18,040 | 18,785 |
| | 42209/2D29 | 84"l x 45"w x 29"h | 48"w x 63"h | Veneer | 4 | 19,580 | 20,040 |
| | 42209/5D29 | 84"l x 45"w x 29"h | 48"w x 63"h | Laminate | 4 | 18,220 | 18,680 |
| | 42213/2D29 | 84"l x 55"w x 29"h | 58"w x 63"h | Veneer | 6½ | 20,565 | 21,310 |
| | 42213/5D29 | 84"l x 55"w x 29"h | 58"w x 63"h | Laminate | 6½ | 19,135 | 19,880 |
| | 42210/2D29 | 96"l x 45"w x 29"h | 48"w x 63"h | Veneer | 4 | 20,760 | 21,225 |
| | 42210/5D29 | 96"l x 45"w x 29"h | 48"w x 63"h | Laminate | 4 | 19,310 | 19,775 |
| | 42220/2D29 | 96"l x 55"w x 29"h | 58"w x 63"h | Veneer | 6½ | 21,800 | 22,545 |
| | 42220/5D29 | 96"l x 55"w x 29"h | 58"w x 63"h | Laminate | 6½ | 20,280 | 21,025 |

Table with Curved Media Wall: 38" Standing Height



| | | | | | | |
|-------------------|---------------------------|--------------------|-----------------|-----------|---------------|---------------|
| 42214/2D38 | 60"l x 45"w x 38"h | 48"w x 72"h | Veneer | 5 | 18,295 | 18,865 |
| 42214/5D38 | 60"l x 45"w x 38"h | 48"w x 72"h | Laminate | 5 | 17,020 | 17,590 |
| 42217/2D38 | 60"l x 55"w x 38"h | 58"w x 72"h | Veneer | 7½ | 19,210 | 20,075 |
| 42217/5D38 | 60"l x 55"w x 38"h | 58"w x 72"h | Laminate | 7½ | 17,880 | 18,740 |
| 42215/2D38 | 72"l x 45"w x 38"h | 48"w x 72"h | Veneer | 5 | 19,395 | 19,970 |
| 42215/5D38 | 72"l x 45"w x 38"h | 48"w x 72"h | Laminate | 5 | 18,040 | 18,615 |
| 42218/2D38 | 72"l x 55"w x 38"h | 58"w x 72"h | Veneer | 7½ | 20,365 | 21,230 |
| 42218/5D38 | 72"l x 55"w x 38"h | 58"w x 72"h | Laminate | 7½ | 18,945 | 19,805 |
| 42216/2D38 | 84"l x 45"w x 38"h | 48"w x 72"h | Veneer | 5 | 20,565 | 21,140 |
| 42216/5D38 | 84"l x 45"w x 38"h | 48"w x 72"h | Laminate | 5 | 19,135 | 19,705 |
| 42219/2D38 | 84"l x 55"w x 38"h | 58"w x 72"h | Veneer | 7½ | 21,595 | 22,455 |
| 42219/5D38 | 84"l x 55"w x 38"h | 58"w x 72"h | Laminate | 7½ | 20,095 | 20,955 |
| 42230/2D38 | 96"l x 45"w x 38"h | 48"w x 72"h | Veneer | 5 | 21,800 | 22,375 |
| 42230/5D38 | 96"l x 45"w x 38"h | 48"w x 72"h | Laminate | 5 | 20,280 | 20,850 |
| 42240/2D38 | 96"l x 55"w x 38"h | 58"w x 72"h | Veneer | 7½ | 22,890 | 23,755 |
| 42240/5D38 | 96"l x 55"w x 38"h | 58"w x 72"h | Veneer | 7½ | 21,295 | 22,155 |

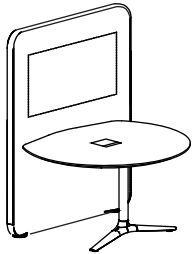
- 48" wide Gateway Media Wall accommodates a maximum monitor of 46".
- 58" wide Gateway Media Wall accommodates a maximum monitor of 60".
- For Curved Media Screen, Nienkämper provides a monitor adapter to receive client's TV mounting brackets.
- Flat panel monitors and mounting brackets to be supplied by customer and are not included in table pricing.
- Connectivity devices are to be ordered separately and cost is not reflected in table pricing. Refer to page 64-75, 94-104, 117 for more information.
- Custom sizes available contact customer service for more information.

GATEWAY™ MEDIA WALL TABLES

STRAIGHT MEDIA WALL TABLES - ROUND TOP

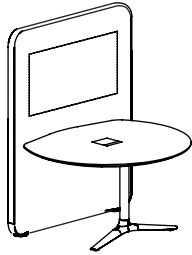
— US ONLY —
List Price

**Table with Straight Media Wall:
22" Lounge Height**



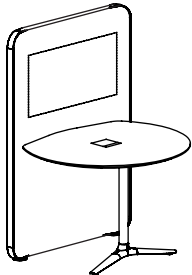
| Model Number | Table Dimensions | Media Wall Dimensions | Top Finish | Fabric Yrd | COM | Knoll Textiles 1 |
|-------------------|----------------------|-----------------------|-----------------|------------|---------------|------------------|
| 42330/2R22 | 36"dia x 22"h | 42"w x 56"h | Veneer | 4 | 13,850 | 14,315 |
| 42330/5R22 | 36"dia x 22"h | 42"w x 56"h | Laminate | 4 | 13,100 | 13,565 |
| 42331/2R22 | 42"dia x 22"h | 48"w x 56"h | Veneer | 4 | 14,580 | 15,045 |
| 42331/5R22 | 42"dia x 22"h | 48"w x 56"h | Laminate | 4 | 13,800 | 14,260 |
| 42332/2R22 | 48"dia x 22"h | 54"w x 56"h | Veneer | 5 | 15,350 | 15,920 |
| 42332/5R22 | 48"dia x 22"h | 54"w x 56"h | Laminate | 5 | 14,515 | 15,085 |
| 42333/2R22 | 54"dia x 22"h | 60"w x 56"h | Veneer | 6 | 16,120 | 16,810 |
| 42333/5R22 | 54"dia x 22"h | 60"w x 56"h | Laminate | 6 | 15,240 | 15,925 |
| 42334/2R22 | 60"dia x 22"h | 66"w x 56"h | Veneer | 7½ | 16,930 | 17,790 |
| 42334/5R22 | 60"dia x 22"h | 66"w x 56"h | Laminate | 7½ | 16,005 | 16,865 |

**Table with Straight Media Wall:
29" Standard Work Height**



| | | | | | | |
|-------------------|----------------------|--------------------|-----------------|-----------|---------------|---------------|
| 42330/2R29 | 36"dia x 29"h | 42"w x 63"h | Veneer | 4 | 14,430 | 14,890 |
| 42330/5R29 | 36"dia x 29"h | 42"w x 63"h | Laminate | 4 | 13,645 | 14,110 |
| 42331/2R29 | 42"dia x 29"h | 48"w x 63"h | Veneer | 4 | 15,185 | 15,645 |
| 42331/5R29 | 42"dia x 29"h | 48"w x 63"h | Laminate | 4 | 14,360 | 14,825 |
| 42332/2R29 | 48"dia x 29"h | 54"w x 63"h | Veneer | 5 | 15,980 | 16,550 |
| 42332/5R29 | 48"dia x 29"h | 54"w x 63"h | Laminate | 5 | 15,115 | 15,690 |
| 42333/2R29 | 54"dia x 29"h | 60"w x 63"h | Veneer | 6 | 16,780 | 17,470 |
| 42333/5R29 | 54"dia x 29"h | 60"w x 63"h | Laminate | 6 | 15,865 | 16,550 |
| 42334/2R29 | 60"dia x 29"h | 66"w x 63"h | Veneer | 7½ | 17,620 | 18,480 |
| 42334/5R29 | 60"dia x 29"h | 66"w x 63"h | Laminate | 7½ | 16,660 | 17,520 |

**Table with Straight Media Wall:
38" Standing Height**



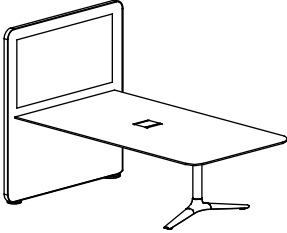
| | | | | | | |
|-------------------|----------------------|--------------------|-----------------|-----------|---------------|---------------|
| 42330/2R38 | 36"dia x 38"h | 42"w x 72"h | Veneer | 4 | 15,155 | 15,615 |
| 42330/5R38 | 36"dia x 38"h | 42"w x 72"h | Laminate | 4 | 14,325 | 14,785 |
| 42331/2R38 | 42"dia x 38"h | 48"w x 72"h | Veneer | 4 | 15,950 | 16,415 |
| 42331/5R38 | 42"dia x 38"h | 48"w x 72"h | Laminate | 4 | 15,080 | 15,540 |
| 42332/2R38 | 48"dia x 38"h | 54"w x 72"h | Veneer | 4 | 16,780 | 17,245 |
| 42332/5R38 | 48"dia x 38"h | 54"w x 72"h | Laminate | 4 | 15,865 | 16,325 |
| 42333/2R38 | 54"dia x 38"h | 60"w x 72"h | Veneer | 6 | 17,620 | 18,310 |
| 42333/5R38 | 54"dia x 38"h | 60"w x 72"h | Laminate | 6 | 16,660 | 17,350 |
| 42334/2R38 | 60"dia x 38"h | 66"w x 72"h | Veneer | 7½ | 18,505 | 19,365 |
| 42334/5R38 | 60"dia x 38"h | 66"w x 72"h | Laminate | 7½ | 17,495 | 18,355 |

- 42" wide Gateway Media Wall accommodates a maximum monitor of 43".
- 48" wide Gateway Media Wall accommodates a maximum monitor of 46".
- 54" wide Gateway Media Wall accommodates a maximum monitor of 55".
- 60", 66" wide Gateway Media Wall accommodates a maximum monitor of 60".
- 72", 84", 96" wide Gateway Media Wall accommodates a maximum monitor of 65".
- Flat panel monitors and mounting brackets to be supplied by customer and are not included in above pricing.
- 36" dia top not available with connectivity device.
- 42" dia top not available with M-forum.
- Connectivity devices are to be ordered separately and cost is not reflected in above pricing. Refer to page 94-104 for more information.
- COM yardage for 96"w x 63"h straight screen is 11-1/4" yards, for 96"w x 72"h straight screen is 13¼" yards.
- For veneer, plastic laminate or markerboard finish on Straight Media Wall, contact customer service for pricing.
- Please contact customer service for pricing Gateway Media Wall.

GATEWAY™ MEDIA WALL TABLES

STRAIGHT MEDIA WALL TABLES - RECTANGLE TOP WITH SOFT CORNERS

— US ONLY —

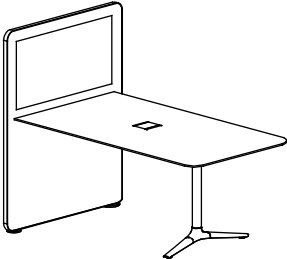
| | Model Number | Table Dimensions | Media Wall Dimensions | Top Finish | Fabric Yrd | List Price | |
|-----------------------------------------------------------------------------------|-------------------|---------------------------|-----------------------|-----------------|------------|---------------|-----------------|
| | | | | | | COM | KnollTextiles 1 |
| Table with Straight Media Wall: 29" Standard Work Height | 42335/2S29 | 60"l x 36"w x 29"h | 42"w x 63"h | Veneer | 4 | 14,970 | 15,430 |
| | 42335/5S29 | 60"l x 36"w x 29"h | 42"w x 63"h | Laminate | 4 | 13,925 | 14,385 |
|  | 42336/2S29 | 60"l x 42"w x 29"h | 48"w x 63"h | Veneer | 4 | 15,760 | 16,220 |
| | 42336/5S29 | 60"l x 42"w x 29"h | 48"w x 63"h | Laminate | 4 | 14,655 | 15,115 |
| | 42337/2S29 | 60"l x 48"w x 29"h | 54"w x 63"h | Veneer | 5 | 16,550 | 17,125 |
| | 42337/5S29 | 60"l x 48"w x 29"h | 54"w x 63"h | Laminate | 5 | 15,390 | 15,960 |
| | 42338/2S29 | 60"l x 54"w x 29"h | 60"w x 63"h | Veneer | 6 | 17,380 | 18,070 |
| | 42338/5S29 | 60"l x 54"w x 29"h | 60"w x 63"h | Laminate | 6 | 16,160 | 16,850 |
| | 42339/2S29 | 72"l x 36"w x 29"h | 42"w x 63"h | Veneer | 4 | 15,865 | 16,325 |
| | 42339/5S29 | 72"l x 36"w x 29"h | 42"w x 63"h | Laminate | 4 | 14,760 | 15,220 |
| | 42340/2S29 | 72"l x 42"w x 29"h | 48"w x 63"h | Veneer | 4 | 16,660 | 17,125 |
| | 42340/5S29 | 72"l x 42"w x 29"h | 48"w x 63"h | Laminate | 4 | 15,500 | 15,960 |
| | 42341/2S29 | 72"l x 48"w x 29"h | 54"w x 63"h | Veneer | 5 | 17,495 | 18,070 |
| | 42341/5S29 | 72"l x 48"w x 29"h | 54"w x 63"h | Laminate | 5 | 16,270 | 16,845 |
| | 42342/2S29 | 72"l x 54"w x 29"h | 60"w x 63"h | Veneer | 6 | 18,370 | 19,060 |
| | 42342/5S29 | 72"l x 54"w x 29"h | 60"w x 63"h | Laminate | 6 | 17,085 | 17,775 |
| | 42343/2S29 | 84"l x 36"w x 29"h | 42"w x 63"h | Veneer | 4 | 16,825 | 17,285 |
| | 42343/5S29 | 84"l x 36"w x 29"h | 42"w x 63"h | Laminate | 4 | 15,645 | 16,110 |
| | 42344/2S29 | 84"l x 42"w x 29"h | 48"w x 63"h | Veneer | 4 | 17,670 | 18,130 |
| | 42344/5S29 | 84"l x 42"w x 29"h | 48"w x 63"h | Laminate | 4 | 16,430 | 16,890 |
| | 42345/2S29 | 84"l x 48"w x 29"h | 54"w x 63"h | Veneer | 5 | 18,550 | 19,125 |
| | 42345/5S29 | 84"l x 48"w x 29"h | 54"w x 63"h | Laminate | 5 | 17,250 | 17,820 |
| | 42346/2S29 | 84"l x 54"w x 29"h | 60"w x 63"h | Veneer | 6 | 19,485 | 20,175 |
| | 42346/5S29 | 84"l x 54"w x 29"h | 60"w x 63"h | Laminate | 6 | 18,120 | 18,810 |
| | 42347/2S29 | 84"l x 60"w x 29"h | 66"w x 63"h | Veneer | 6 | 20,455 | 21,145 |
| | 42347/5S29 | 84"l x 60"w x 29"h | 66"w x 63"h | Laminate | 6 | 19,035 | 19,720 |
| | 42348/2S29 | 96"l x 42"w x 29"h | 48"w x 63"h | Veneer | 4 | 18,725 | 19,185 |
| | 42348/5S29 | 96"l x 42"w x 29"h | 48"w x 63"h | Laminate | 4 | 17,420 | 17,885 |
| | 42349/2S29 | 96"l x 48"w x 29"h | 54"w x 63"h | Veneer | 5 | 19,670 | 20,240 |
| | 42349/5S29 | 96"l x 48"w x 29"h | 54"w x 63"h | Laminate | 5 | 18,295 | 18,865 |
| | 42350/2S29 | 96"l x 54"w x 29"h | 60"w x 63"h | Veneer | 6 | 20,650 | 21,340 |
| | 42350/5S29 | 96"l x 54"w x 29"h | 60"w x 63"h | Laminate | 6 | 19,210 | 19,900 |
| | 42351/2S29 | 96"l x 60"w x 29"h | 66"w x 63"h | Veneer | 7½ | 21,685 | 22,545 |
| | 42351/5S29 | 96"l x 60"w x 29"h | 66"w x 63"h | Laminate | 7½ | 20,170 | 21,030 |
| | 42352/2S29 | 72"l x 45"w x 29"h | 54"w x 63"h | Veneer | 5 | 17,295 | 17,870 |
| | 42352/5S29 | 72"l x 45"w x 29"h | 54"w x 63"h | Laminate | 5 | 16,090 | 16,660 |
| | 42353/2S29 | 72"l x 55"w x 29"h | 60"w x 63"h | Veneer | 6 | 18,830 | 19,515 |
| | 42353/5S29 | 72"l x 55"w x 29"h | 60"w x 63"h | Laminate | 6 | 17,510 | 18,200 |
| | 42354/2S29 | 84"l x 45"w x 29"h | 54"w x 63"h | Veneer | 5 | 19,070 | 19,645 |
| | 42354/5S29 | 84"l x 45"w x 29"h | 54"w x 63"h | Laminate | 5 | 17,735 | 18,310 |
| | 42355/2S29 | 84"l x 55"w x 29"h | 60"w x 63"h | Veneer | 6 | 20,765 | 21,455 |
| | 42355/5S29 | 84"l x 55"w x 29"h | 60"w x 63"h | Laminate | 6 | 19,310 | 20,000 |

- Flat panel monitors and mounting brackets to be supplied by customer and are not included in above pricing.
- Connectivity devices are to be ordered separately and cost is not reflected in above pricing. Refer to page 94-104 for more information.
- COM yardage for 96"w x 63"h straight screen is 11-1/4" yards, for 96"w x 72"h straight screen is 13-1/4" yards.
- For veneer, plastic laminate or markerboard finish on Straight Media Wall, contact customer service for pricing.

GATEWAY™ MEDIA WALL TABLES

STRAIGHT MEDIA WALL TABLES - RECTANGLE TOP WITH SOFT CORNERS

— US ONLY —

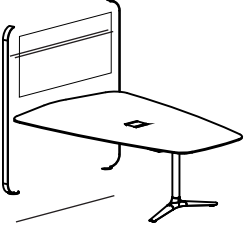
| | Model Number | Table Dimensions | Media Wall Dimensions | Top Finish | Fabric Yrd | List Price | |
|----------------------------------------------------------------------------------------------------------------------------------------------|-------------------|---------------------------|-----------------------|-----------------|------------|---------------|-----------------|
| | | | | | | COM | KnollTextiles 1 |
| Table with Straight Media Wall: 38" Standing Height  | 42335/2S38 | 60"l x 36"w x 38"h | 42"w x 72"h | Veneer | 4 | 15,720 | 16,185 |
| | 42335/5S38 | 60"l x 36"w x 38"h | 42"w x 72"h | Laminate | 4 | 14,630 | 15,090 |
| | 42336/2S38 | 60"l x 42"w x 38"h | 48"w x 72"h | Veneer | 4 | 16,550 | 17,010 |
| | 42336/5S38 | 60"l x 42"w x 38"h | 48"w x 72"h | Laminate | 4 | 15,385 | 15,845 |
| | 42337/2S38 | 60"l x 48"w x 38"h | 54"w x 72"h | Veneer | 5 | 17,380 | 17,950 |
| | 42337/5S38 | 60"l x 48"w x 38"h | 54"w x 72"h | Laminate | 5 | 16,160 | 16,735 |
| | 42338/2S38 | 60"l x 54"w x 38"h | 60"w x 72"h | Veneer | 6 | 18,250 | 18,940 |
| | 42338/5S38 | 60"l x 54"w x 38"h | 60"w x 72"h | Laminate | 6 | 16,970 | 17,660 |
| | 42339/2S38 | 72"l x 36"w x 38"h | 42"w x 72"h | Veneer | 4 | 16,660 | 17,125 |
| | 42339/5S38 | 72"l x 36"w x 38"h | 42"w x 72"h | Laminate | 4 | 15,500 | 15,960 |
| | 42340/2S38 | 72"l x 42"w x 38"h | 48"w x 72"h | Veneer | 4 | 17,495 | 17,955 |
| | 42340/5S38 | 72"l x 42"w x 38"h | 48"w x 72"h | Laminate | 4 | 16,270 | 16,735 |
| | 42341/2S38 | 72"l x 48"w x 38"h | 54"w x 72"h | Veneer | 5 | 18,370 | 18,945 |
| | 42341/5S38 | 72"l x 48"w x 38"h | 54"w x 72"h | Laminate | 5 | 17,085 | 17,660 |
| | 42342/2S38 | 72"l x 54"w x 38"h | 60"w x 72"h | Veneer | 6 | 19,290 | 19,980 |
| | 42342/5S38 | 72"l x 54"w x 38"h | 60"w x 72"h | Laminate | 6 | 17,940 | 18,630 |
| | 42343/2S38 | 84"l x 36"w x 38"h | 42"w x 72"h | Veneer | 4 | 17,670 | 18,130 |
| | 42343/5S38 | 84"l x 36"w x 38"h | 42"w x 72"h | Laminate | 4 | 16,430 | 16,890 |
| | 42344/2S38 | 84"l x 42"w x 38"h | 48"w x 72"h | Veneer | 4 | 18,550 | 19,015 |
| | 42344/5S38 | 84"l x 42"w x 38"h | 48"w x 72"h | Laminate | 4 | 17,255 | 17,715 |
| | 42345/2S38 | 84"l x 48"w x 38"h | 54"w x 72"h | Veneer | 5 | 19,485 | 20,055 |
| | 42345/5S38 | 84"l x 48"w x 38"h | 54"w x 72"h | Laminate | 5 | 18,115 | 18,685 |
| | 42346/2S38 | 84"l x 54"w x 38"h | 60"w x 72"h | Veneer | 6 | 20,455 | 21,145 |
| | 42346/5S38 | 84"l x 54"w x 38"h | 60"w x 72"h | Laminate | 6 | 19,035 | 19,720 |
| | 42347/2S38 | 84"l x 60"w x 38"h | 66"w x 72"h | Veneer | 6 | 21,480 | 22,170 |
| | 42347/5S38 | 84"l x 60"w x 38"h | 66"w x 72"h | Laminate | 6 | 19,985 | 20,670 |
| | 42348/2S38 | 96"l x 42"w x 38"h | 48"w x 72"h | Veneer | 4 | 19,670 | 20,130 |
| | 42348/5S38 | 96"l x 42"w x 38"h | 48"w x 72"h | Laminate | 4 | 18,295 | 18,755 |
| | 42349/2S38 | 96"l x 48"w x 38"h | 54"w x 72"h | Veneer | 5 | 20,650 | 21,225 |
| | 42349/5S38 | 96"l x 48"w x 38"h | 54"w x 72"h | Laminate | 5 | 19,225 | 19,795 |
| | 42350/2S38 | 96"l x 54"w x 38"h | 60"w x 72"h | Veneer | 6 | 21,685 | 22,375 |
| | 42350/5S38 | 96"l x 54"w x 38"h | 60"w x 72"h | Laminate | 6 | 20,175 | 20,860 |
| | 42351/2S38 | 96"l x 60"w x 38"h | 66"w x 72"h | Veneer | 7½ | 22,775 | 23,640 |
| | 42351/5S38 | 96"l x 60"w x 38"h | 66"w x 72"h | Laminate | 7½ | 21,180 | 22,040 |
| | 42352/2S38 | 72"l x 45"w x 38"h | 48"w x 72"h | Veneer | 4 | 18,160 | 18,625 |
| | 42352/5S38 | 72"l x 45"w x 38"h | 48"w x 72"h | Laminate | 4 | 16,890 | 17,355 |
| | 42353/2S38 | 72"l x 55"w x 38"h | 58"w x 72"h | Veneer | 4 | 19,775 | 20,235 |
| | 42353/5S38 | 72"l x 55"w x 38"h | 58"w x 72"h | Laminate | 4 | 18,395 | 18,855 |
| | 42354/2S38 | 84"l x 45"w x 38"h | 48"w x 72"h | Veneer | 5 | 20,025 | 20,600 |
| | 42354/5S38 | 84"l x 45"w x 38"h | 48"w x 72"h | Laminate | 5 | 18,630 | 19,200 |
| | 42355/2S38 | 84"l x 55"w x 38"h | 58"w x 72"h | Veneer | 6 | 21,805 | 22,495 |
| | 42355/5S38 | 84"l x 55"w x 38"h | 58"w x 72"h | Laminate | 6 | 20,285 | 20,970 |

- 42" wide Gateway Media Wall accommodates a maximum monitor of 43".
- 48" wide Gateway Media Wall accommodates a maximum monitor of 46".
- 54" wide Gateway Media Wall accommodates a maximum monitor of 55".
- 60", 66" wide Gateway Media Wall accommodates a maximum monitor of 60".
- 72", 84", 96" wide Gateway Media Wall accommodates a maximum monitor of 65".
- Flat panel monitors and mounting brackets to be supplied by customer and are not included in above pricing.
- Connectivity devices are to be ordered separately and cost is not reflected in above pricing. Refer to page 51-52 & 64-70 for more information.
- COM yardage for 96"w x 63"h straight screen is 11-1/4" yards, for 96"w x 72"h straight screen is 13-1/4" yards.
- For veneer, plastic laminate or markerboard finish on Straight Media Wall, contact customer service for pricing.
- Please contact customer service for pricing Gateway Media Wall.

GATEWAY™ MEDIA WALL TABLES

STRAIGHT MEDIA WALL TABLES - VISTA TOP

— US ONLY —

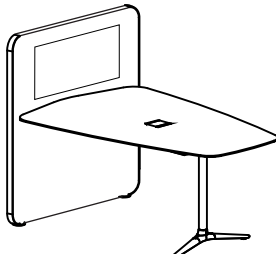
| | Model Number | Table Dimensions | Media Wall Dimensions | Top Finish | Fabric Yrd | List Price | |
|----------------------------------------------------------------------------------------------------------------------------------------------------|-------------------|------------------------------------|-----------------------|-----------------|------------|---------------|-----------------|
| | | | | | | COM | KnollTextiles 1 |
| Table with Media Wall: 29" Standard Work Height  | 42335/2V29 | 60"l x (26"-36")w x 29"h | 42"w x 63"h | Veneer | 4 | 15,350 | 15,810 |
| | 42335/5V29 | 60"l x (26"-36")w x 29"h | 42"w x 63"h | Laminate | 4 | 14,275 | 14,740 |
| | 42336/2V29 | 60"l x (27½"-42")w x 29"h | 48"w x 63"h | Veneer | 4 | 16,150 | 16,615 |
| | 42336/5V29 | 60"l x (27½"-42")w x 29"h | 48"w x 63"h | Laminate | 4 | 15,025 | 15,485 |
| | 42337/2V29 | 60"l x (32"-48")w x 29"h | 54"w x 63"h | Veneer | 5 | 16,965 | 17,535 |
| | 42337/5V29 | 60"l x (32"-48")w x 29"h | 54"w x 63"h | Laminate | 5 | 15,785 | 16,355 |
| | 42338/2V29 | 60"l x (32"-54")w x 29"h | 60"w x 63"h | Veneer | 6 | 17,815 | 18,505 |
| | 42338/5V29 | 60"l x (32"-54")w x 29"h | 60"w x 63"h | Laminate | 6 | 16,575 | 17,265 |
| | 42339/2V29 | 72"l x (26"-36")w x 29"h | 42"w x 63"h | Veneer | 4 | 16,265 | 16,730 |
| | 42339/5V29 | 72"l x (26"-36")w x 29"h | 42"w x 63"h | Laminate | 4 | 15,135 | 15,595 |
| | 42340/2V29 | 72"l x (27½"-42")w x 29"h | 48"w x 63"h | Veneer | 4 | 17,080 | 17,545 |
| | 42340/5V29 | 72"l x (27½"-42")w x 29"h | 48"w x 63"h | Laminate | 4 | 15,895 | 16,355 |
| | 42341/2V29 | 72"l x (32"-48")w x 29"h | 54"w x 63"h | Veneer | 5 | 17,930 | 18,505 |
| | 42341/5V29 | 72"l x (32"-48")w x 29"h | 54"w x 63"h | Laminate | 5 | 16,685 | 17,260 |
| | 42342/2V29 | 72"l x (32"-54")w x 29"h | 60"w x 63"h | Veneer | 6 | 18,835 | 19,520 |
| | 42342/5V29 | 72"l x (32"-54")w x 29"h | 60"w x 63"h | Laminate | 6 | 17,520 | 18,210 |
| | 42343/2V29 | 84"l x (26"-36")w x 29"h | 42"w x 63"h | Veneer | 4 | 17,245 | 17,705 |
| | 42343/5V29 | 84"l x (26"-36")w x 29"h | 42"w x 63"h | Laminate | 4 | 16,040 | 16,505 |
| | 42344/2V29 | 84"l x (27½"-42")w x 29"h | 48"w x 63"h | Veneer | 4 | 18,110 | 18,570 |
| | 42344/5V29 | 84"l x (27½"-42")w x 29"h | 48"w x 63"h | Laminate | 4 | 16,845 | 17,305 |
| | 42345/2V29 | 84"l x (32"-48")w x 29"h | 54"w x 63"h | Veneer | 5 | 19,025 | 19,595 |
| | 42345/5V29 | 84"l x (32"-48")w x 29"h | 54"w x 63"h | Laminate | 5 | 17,685 | 18,255 |
| | 42346/2V29 | 84"l x (32"-54")w x 29"h | 60"w x 63"h | Veneer | 6 | 19,975 | 20,660 |
| | 42346/5V29 | 84"l x (32"-54")w x 29"h | 60"w x 63"h | Laminate | 6 | 18,575 | 19,265 |
| | 42347/2V29 | 84"l x (32"-60")w x 29"h | 66"w x 63"h | Veneer | 7½ | 20,975 | 21,835 |
| | 42347/5V29 | 84"l x (32"-60")w x 29"h | 66"w x 63"h | Laminate | 7½ | 19,505 | 20,365 |
| | 42348/2V29 | 96"l x (27½"-42")w x 29"h | 48"w x 63"h | Veneer | 4 | 19,195 | 19,660 |
| | 42348/5V29 | 96"l x (27½"-42")w x 29"h | 48"w x 63"h | Laminate | 4 | 17,860 | 18,320 |
| | 42349/2V29 | 96"l x (32"-48")w x 29"h | 54"w x 63"h | Veneer | 5 | 20,160 | 20,735 |
| | 42349/5V29 | 96"l x (32"-48")w x 29"h | 54"w x 63"h | Laminate | 5 | 18,760 | 19,335 |
| | 42350/2V29 | 96"l x (32"-54")w x 29"h | 60"w x 63"h | Veneer | 6 | 21,170 | 21,860 |
| | 42350/5V29 | 96"l x (32"-54")w x 29"h | 60"w x 63"h | Laminate | 6 | 19,695 | 20,385 |
| | 42351/2V29 | 96"l x (32"-60")w x 29"h | 66"w x 63"h | Veneer | 7½ | 22,225 | 23,085 |
| | 42351/5V29 | 96"l x (32"-60")w x 29"h | 66"w x 63"h | Laminate | 7½ | 20,680 | 21,545 |
| | 42352/2V29 | 72"l x (21¾" - 45")w x 29"h | 54"w x 63"h | Veneer | 5 | 17,730 | 18,305 |
| | 42352/5V29 | 72"l x (21¾" - 45")w x 29"h | 54"w x 63"h | Laminate | 5 | 16,495 | 17,065 |
| | 42353/2V29 | 72"l x (32" - 55")w x 29"h | 60"w x 63"h | Veneer | 6 | 19,305 | 19,995 |
| | 42353/5V29 | 72"l x (32" - 55")w x 29"h | 60"w x 63"h | Laminate | 6 | 17,945 | 18,635 |
| | 42354/2V29 | 84"l x (21¾" - 45")w x 29"h | 54"w x 63"h | Veneer | 5 | 19,555 | 20,125 |
| | 42354/5V29 | 84"l x (21¾" - 45")w x 29"h | 54"w x 63"h | Laminate | 5 | 18,190 | 18,760 |
| | 42355/2V29 | 84"l x (32" - 55")w x 29"h | 60"w x 63"h | Veneer | 6 | 21,275 | 21,965 |
| | 42355/5V29 | 84"l x (32" - 55")w x 29"h | 60"w x 63"h | Laminate | 6 | 19,795 | 20,485 |

- 42" wide Gateway Media Wall accommodates a maximum monitor of 43".
- 48" wide Gateway Media Wall accommodates a maximum monitor of 46".
- 54" wide Gateway Media Wall accommodates a maximum monitor of 55".
- 60", 66" wide Gateway Media Wall accommodates a maximum monitor of 60".
- 72", 84", 96" wide Gateway Media Wall accommodates a maximum monitor of 65".
- Flat panel monitors and mounting brackets to be supplied by customer and are not included in above pricing.
- Connectivity devices are to be ordered separately and cost is not reflected in above pricing. Refer to page 51-52 & 64-70 for more information.
- COM yardage for 96" w x 63" h straight screen is 11-1/4" yards, for 96" w x 72" h straight screen is 13-1/4" yards.
- For veneer, plastic laminate or markerboard finish on Straight Media Wall, contact customer service for pricing.
- Please contact customer service for pricing Gateway Media Wall.

GATEWAY™ MEDIA WALL TABLES

STRAIGHT MEDIA WALL TABLES - VISTA TOP

— US ONLY —

| | Model Number | Table Dimensions | Media Wall Dimensions | Top Finish | Fabric Yrd | List Price | |
|-----------------------------------------------------------------------------------------------------------------------------------------|-------------------|------------------------------------|-----------------------|-----------------|------------|---------------|-----------------|
| | | | | | | COM | KnollTextiles 1 |
| Table with Media Wall: 38" Standing Height  | 42335/2V38 | 60"l x (26"-36")w x 38"h | 42"w x 72"h | Veneer | 4 | 16,120 | 16,580 |
| | 42335/5V38 | 60"l x (26"-36")w x 38"h | 42"w x 72"h | Laminate | 4 | 14,990 | 15,455 |
| | 42336/2V38 | 60"l x (27½"-42")w x 38"h | 48"w x 72"h | Veneer | 6 | 16,965 | 17,655 |
| | 42336/5V38 | 60"l x (27½"-42")w x 38"h | 48"w x 72"h | Laminate | 6 | 15,780 | 16,465 |
| | 42337/2V38 | 60"l x (32"-48")w x 38"h | 54"w x 72"h | Veneer | 7½ | 17,815 | 18,675 |
| | 42337/5V38 | 60"l x (32"-48")w x 38"h | 54"w x 72"h | Laminate | 7½ | 16,575 | 17,440 |
| | 42338/2V38 | 60"l x (32"-54")w x 38"h | 60"w x 72"h | Veneer | 7½ | 18,705 | 19,565 |
| | 42338/5V38 | 60"l x (32"-54")w x 38"h | 60"w x 72"h | Laminate | 7½ | 17,400 | 18,260 |
| | 42339/2V38 | 72"l x (26"-36")w x 38"h | 42"w x 72"h | Veneer | 4 | 17,080 | 17,545 |
| | 42339/5V38 | 72"l x (26"-36")w x 38"h | 42"w x 72"h | Laminate | 4 | 15,895 | 16,355 |
| | 42340/2V38 | 72"l x (27½"-42")w x 38"h | 48"w x 72"h | Veneer | 6 | 17,930 | 18,620 |
| | 42340/5V38 | 72"l x (27½"-42")w x 38"h | 48"w x 72"h | Laminate | 6 | 16,685 | 17,375 |
| | 42341/2V38 | 72"l x (32"-48")w x 38"h | 54"w x 72"h | Veneer | 7½ | 18,835 | 19,695 |
| | 42341/5V38 | 72"l x (32"-48")w x 38"h | 54"w x 72"h | Laminate | 7½ | 17,520 | 18,385 |
| | 42342/2V38 | 72"l x (32"-54")w x 38"h | 60"w x 72"h | Veneer | 7½ | 19,775 | 20,635 |
| | 42342/5V38 | 72"l x (32"-54")w x 38"h | 60"w x 72"h | Laminate | 7½ | 18,400 | 19,260 |
| | 42343/2V38 | 84"l x (26"-36")w x 38"h | 42"w x 72"h | Veneer | 4 | 18,110 | 18,570 |
| | 42343/5V38 | 84"l x (26"-36")w x 38"h | 42"w x 72"h | Laminate | 4 | 16,845 | 17,305 |
| | 42344/2V38 | 84"l x (27½"-42")w x 38"h | 48"w x 72"h | Veneer | 6 | 19,025 | 19,710 |
| | 42344/5V38 | 84"l x (27½"-42")w x 38"h | 48"w x 72"h | Laminate | 6 | 17,690 | 18,375 |
| | 42345/2V38 | 84"l x (32"-48")w x 38"h | 54"w x 72"h | Veneer | 7½ | 19,975 | 20,835 |
| | 42345/5V38 | 84"l x (32"-48")w x 38"h | 54"w x 72"h | Laminate | 7½ | 18,570 | 19,435 |
| | 42346/2V38 | 84"l x (32"-54")w x 38"h | 60"w x 72"h | Veneer | 7½ | 20,975 | 21,835 |
| | 42346/5V38 | 84"l x (32"-54")w x 38"h | 60"w x 72"h | Laminate | 7½ | 19,505 | 20,365 |
| | 42347/2V38 | 84"l x (32"-60")w x 38"h | 66"w x 72"h | Veneer | 8 | 22,025 | 22,945 |
| | 42347/5V38 | 84"l x (32"-60")w x 38"h | 66"w x 72"h | Laminate | 8 | 20,485 | 21,400 |
| | 42348/2V38 | 96"l x (27½"-42")w x 38"h | 48"w x 72"h | Veneer | 6 | 20,160 | 20,850 |
| | 42348/5V38 | 96"l x (27½"-42")w x 38"h | 48"w x 72"h | Laminate | 6 | 18,760 | 19,450 |
| | 42349/2V38 | 96"l x (32"-48")w x 38"h | 54"w x 72"h | Veneer | 7½ | 21,170 | 22,030 |
| | 42349/5V38 | 96"l x (32"-48")w x 38"h | 54"w x 72"h | Laminate | 7½ | 19,700 | 20,560 |
| | 42350/2V38 | 96"l x (32"-54")w x 38"h | 60"w x 72"h | Veneer | 7½ | 22,225 | 23,085 |
| | 42350/5V38 | 96"l x (32"-54")w x 38"h | 60"w x 72"h | Laminate | 7½ | 20,685 | 21,550 |
| | 42351/2V38 | 96"l x (32"-60")w x 38"h | 66"w x 72"h | Veneer | 8 | 23,340 | 24,255 |
| | 42351/5V38 | 96"l x (32"-60")w x 38"-h | 66"w x 72"h | Laminate | 8 | 21,705 | 22,625 |
| | 42352/2V38 | 72"l x (21¾" - 45")w x 38"h | 42"w x 72"h | Veneer | 4 | 18,625 | 19,085 |
| | 42352/5V38 | 72"l x (21¾" - 45")w x 38"h | 42"w x 72"h | Laminate | 4 | 17,320 | 17,785 |
| | 42353/2V38 | 72"l x (32" - 55")w x 38"h | 48"w x 72"h | Veneer | 6 | 20,275 | 20,960 |
| | 42353/5V38 | 72"l x (32" - 55")w x 38"h | 48"w x 72"h | Laminate | 6 | 18,855 | 19,545 |
| | 42354/2V38 | 84"l x (21¾" - 45")w x 38"h | 54"w x 72"h | Veneer | 7½ | 20,535 | 21,395 |
| | 42354/5V38 | 84"l x (21¾" - 45")w x 38"h | 54"w x 72"h | Laminate | 7½ | 19,100 | 19,965 |
| | 42355/2V38 | 84"l x (32" - 55")w x 38"h | 60"w x 72"h | Veneer | 7½ | 22,355 | 23,220 |
| | 42355/5V38 | 84"l x (32" - 55")w x 38"h | 60"w x 72"h | Laminate | 7½ | 20,785 | 21,650 |

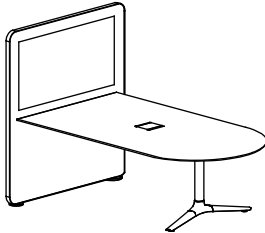
- 42" wide Gateway Media Wall accommodates a maximum monitor of 43".
- 48" wide Gateway Media Wall accommodates a maximum monitor of 46".
- 54" wide Gateway Media Wall accommodates a maximum monitor of 55".
- 60", 66" wide Gateway Media Wall accommodates a maximum monitor of 60".
- 72", 84", 96" wide Gateway Media Wall accommodates a maximum monitor of 65".
- Flat panel monitors and mounting brackets to be supplied by customer and are not included in above pricing.
- Connectivity devices are to be ordered separately and cost is not reflected in above pricing. Refer to page 51-52 & 64-70 for more information.
- COM yardage for 96"w x 63"h straight screen is 11-1/4" yards, for 96"w x 72"h straight screen is 13¼" yards.
- For veneer, plastic laminate or markerboard finish on Straight Media Wall, contact customer service for pricing.
- Please contact customer service for pricing Gateway Media Wall.

GATEWAY™ MEDIA WALL TABLES

STRAIGHT MEDIA WALL TABLES - D END TOP

— US ONLY —

**Table with Straight Media Wall:
29" Standard Work Height**



| Model Number | Table Dimensions | Media Wall Dimensions | Top Finish | Fabric Yrd | List Price | | |
|-------------------|---------------------------|-----------------------|-----------------|------------|---------------|-------|---------------|
| | | | | | COM | Knoll | Textiles 1 |
| 42335/2D29 | 60"l x 36"w x 29"h | 42"w x 63"h | Veneer | 4 | 15,730 | | 16,195 |
| 42335/5D29 | 60"l x 36"w x 29"h | 42"w x 63"h | Laminate | 4 | 14,635 | | 15,095 |
| 42336/2D29 | 60"l x 42"w x 29"h | 48"w x 63"h | Veneer | 4 | 16,560 | | 17,025 |
| 42336/5D29 | 60"l x 42"w x 29"h | 48"w x 63"h | Laminate | 4 | 15,395 | | 15,855 |
| 42337/2D29 | 60"l x 48"w x 29"h | 54"w x 63"h | Veneer | 5 | 17,390 | | 17,965 |
| 42337/5D29 | 60"l x 48"w x 29"h | 54"w x 63"h | Laminate | 5 | 16,170 | | 16,745 |
| 42338/2D29 | 60"l x 54"w x 29"h | 60"w x 63"h | Veneer | 6 | 18,265 | | 18,955 |
| 42338/5D29 | 60"l x 54"w x 29"h | 60"w x 63"h | Laminate | 6 | 16,990 | | 17,680 |
| 42339/2D29 | 72"l x 36"w x 29"h | 42"w x 63"h | Veneer | 4 | 16,675 | | 17,140 |
| 42339/5D29 | 72"l x 36"w x 29"h | 42"w x 63"h | Laminate | 4 | 15,510 | | 15,975 |
| 42340/2D29 | 72"l x 42"w x 29"h | 48"w x 63"h | Veneer | 4 | 17,510 | | 17,975 |
| 42340/5D29 | 72"l x 42"w x 29"h | 48"w x 63"h | Laminate | 4 | 16,285 | | 16,745 |
| 42341/2D29 | 72"l x 48"w x 29"h | 54"w x 63"h | Veneer | 5 | 18,390 | | 18,960 |
| 42341/5D29 | 72"l x 48"w x 29"h | 54"w x 63"h | Laminate | 5 | 17,100 | | 17,675 |
| 42342/2D29 | 72"l x 54"w x 29"h | 60"w x 63"h | Veneer | 6 | 19,310 | | 20,000 |
| 42342/5D29 | 72"l x 54"w x 29"h | 60"w x 63"h | Laminate | 6 | 17,965 | | 18,650 |
| 42343/2D29 | 84"l x 36"w x 29"h | 42"w x 63"h | Veneer | 4 | 17,680 | | 18,140 |
| 42343/5D29 | 84"l x 36"w x 29"h | 42"w x 63"h | Laminate | 4 | 16,455 | | 16,920 |
| 42344/2D29 | 84"l x 42"w x 29"h | 48"w x 63"h | Veneer | 4 | 18,565 | | 19,030 |
| 42344/5D29 | 84"l x 42"w x 29"h | 48"w x 63"h | Laminate | 4 | 17,270 | | 17,730 |
| 42345/2D29 | 84"l x 48"w x 29"h | 54"w x 63"h | Veneer | 5 | 19,495 | | 20,070 |
| 42345/5D29 | 84"l x 48"w x 29"h | 54"w x 63"h | Laminate | 5 | 18,130 | | 18,705 |
| 42346/2D29 | 84"l x 54"w x 29"h | 60"w x 63"h | Veneer | 6 | 20,470 | | 21,160 |
| 42346/5D29 | 84"l x 54"w x 29"h | 60"w x 63"h | Laminate | 6 | 19,050 | | 19,735 |
| 42347/2D29 | 84"l x 60"w x 29"h | 66"w x 63"h | Veneer | 6 | 21,490 | | 22,180 |
| 42347/5D29 | 84"l x 60"w x 29"h | 66"w x 63"h | Laminate | 6 | 19,995 | | 20,680 |
| 42348/2D29 | 96"l x 42"w x 29"h | 48"w x 63"h | Veneer | 4 | 19,680 | | 20,140 |
| 42348/5D29 | 96"l x 42"w x 29"h | 48"w x 63"h | Laminate | 4 | 18,315 | | 18,775 |
| 42349/2D29 | 96"l x 48"w x 29"h | 54"w x 63"h | Veneer | 5 | 20,665 | | 21,240 |
| 42349/5D29 | 96"l x 48"w x 29"h | 54"w x 63"h | Laminate | 5 | 19,240 | | 19,810 |
| 42350/2D29 | 96"l x 54"w x 29"h | 60"w x 63"h | Veneer | 6 | 21,700 | | 22,390 |
| 42350/5D29 | 96"l x 54"w x 29"h | 60"w x 63"h | Laminate | 6 | 20,190 | | 20,875 |
| 42351/2D29 | 96"l x 60"w x 29"h | 66"w x 63"h | Veneer | 7½ | 22,785 | | 23,650 |
| 42351/5D29 | 96"l x 60"w x 29"h | 66"w x 63"h | Laminate | 7½ | 21,200 | | 22,065 |
| 42352/2D29 | 72"l x 45"w x 29"h | 54"w x 63"h | Veneer | 5 | 18,180 | | 18,750 |
| 42352/5D29 | 72"l x 45"w x 29"h | 54"w x 63"h | Laminate | 5 | 16,900 | | 17,475 |
| 42353/2D29 | 72"l x 55"w x 29"h | 60"w x 63"h | Veneer | 6 | 19,790 | | 20,475 |
| 42353/5D29 | 72"l x 55"w x 29"h | 60"w x 63"h | Laminate | 6 | 18,405 | | 19,090 |
| 42354/2D29 | 84"l x 45"w x 29"h | 54"w x 63"h | Veneer | 5 | 20,050 | | 20,625 |
| 42354/5D29 | 84"l x 45"w x 29"h | 54"w x 63"h | Laminate | 5 | 18,645 | | 19,215 |
| 42355/2D29 | 84"l x 55"w x 29"h | 60"w x 63"h | Veneer | 6 | 21,815 | | 22,505 |
| 42355/5D29 | 84"l x 55"w x 29"h | 60"w x 63"h | Laminate | 6 | 20,305 | | 20,990 |

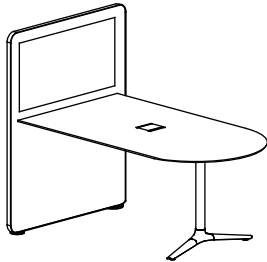
- Flat panel monitors and mounting brackets to be supplied by customer and are not included in above pricing.
- Connectivity devices are to be ordered separately and cost is not reflected in above pricing. Refer to page 94-104 for more information.
- COM yardage for 96"w x 63"h straight screen is 11¼" yards, for 96"w x 72"h straight screen is 13¼" yards.
- For veneer, plastic laminate or markerboard finish on Straight Media Wall, contact customer service for pricing.

GATEWAY™ MEDIA WALL TABLES

STRAIGHT MEDIA WALL TABLES - D END TOP

— US ONLY —
List Price

Table with Straight Media Wall:
38" Standing Height



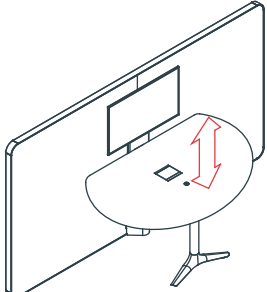
| Model Number | Table Dimensions | Media Wall Dimensions | Top Finish | Fabric Yrd | COM | KnollTextiles 1 |
|-------------------|---------------------------|-----------------------|-----------------|------------|---------------|-----------------|
| 42335/2D38 | 60"l x 36"w x 38"h | 42"w x 72"h | Veneer | 4 | 16,520 | 16,980 |
| 42335/5D38 | 60"l x 36"w x 38"h | 42"w x 72"h | Laminate | 4 | 15,370 | 15,830 |
| 42336/2D38 | 60"l x 42"w x 38"h | 48"w x 72"h | Veneer | 4 | 17,390 | 17,850 |
| 42336/5D38 | 60"l x 42"w x 38"h | 48"w x 72"h | Laminate | 4 | 16,165 | 16,630 |
| 42337/2D38 | 60"l x 48"w x 38"h | 54"w x 72"h | Veneer | 5 | 18,265 | 18,840 |
| 42337/5D38 | 60"l x 48"w x 38"h | 54"w x 72"h | Laminate | 5 | 16,990 | 17,565 |
| 42338/2D38 | 60"l x 54"w x 38"h | 60"w x 72"h | Veneer | 6 | 19,170 | 19,860 |
| 42338/5D38 | 60"l x 54"w x 38"h | 60"w x 72"h | Laminate | 6 | 17,830 | 18,520 |
| 42339/2D38 | 72"l x 36"w x 38"h | 42"w x 72"h | Veneer | 4 | 17,510 | 17,975 |
| 42339/5D38 | 72"l x 36"w x 38"h | 42"w x 72"h | Laminate | 4 | 16,285 | 16,745 |
| 42340/2D38 | 72"l x 42"w x 38"h | 48"w x 72"h | Veneer | 4 | 18,390 | 18,850 |
| 42340/5D38 | 72"l x 42"w x 38"h | 48"w x 72"h | Laminate | 4 | 17,100 | 17,565 |
| 42341/2D38 | 72"l x 48"w x 38"h | 54"w x 72"h | Veneer | 5 | 19,310 | 19,885 |
| 42341/5D38 | 72"l x 48"w x 38"h | 54"w x 72"h | Laminate | 5 | 17,965 | 18,535 |
| 42342/2D38 | 72"l x 54"w x 38"h | 60"w x 72"h | Veneer | 6 | 20,275 | 20,960 |
| 42342/5D38 | 72"l x 54"w x 38"h | 60"w x 72"h | Laminate | 6 | 18,865 | 19,555 |
| 42343/2D38 | 84"l x 36"w x 38"h | 42"w x 72"h | Veneer | 4 | 18,565 | 19,030 |
| 42343/5D38 | 84"l x 36"w x 38"h | 42"w x 72"h | Laminate | 4 | 17,270 | 17,730 |
| 42344/2D38 | 84"l x 42"w x 38"h | 48"w x 72"h | Veneer | 4 | 19,495 | 19,960 |
| 42344/5D38 | 84"l x 42"w x 38"h | 48"w x 72"h | Laminate | 4 | 18,135 | 18,600 |
| 42345/2D38 | 84"l x 48"w x 38"h | 54"w x 72"h | Veneer | 5 | 20,470 | 21,045 |
| 42345/5D38 | 84"l x 48"w x 38"h | 54"w x 72"h | Laminate | 5 | 19,045 | 19,615 |
| 42346/2D38 | 84"l x 54"w x 38"h | 60"w x 72"h | Veneer | 6 | 21,490 | 22,180 |
| 42346/5D38 | 84"l x 54"w x 38"h | 60"w x 72"h | Laminate | 6 | 19,995 | 20,680 |
| 42347/2D38 | 84"l x 60"w x 38"h | 66"w x 72"h | Veneer | 6 | 22,570 | 23,260 |
| 42347/5D38 | 84"l x 60"w x 38"h | 66"w x 72"h | Laminate | 6 | 20,995 | 21,685 |
| 42348/2D38 | 96"l x 42"w x 38"h | 48"w x 72"h | Veneer | 4 | 20,665 | 21,130 |
| 42348/5D38 | 96"l x 42"w x 38"h | 48"w x 72"h | Laminate | 4 | 19,240 | 19,700 |
| 42349/2D38 | 96"l x 48"w x 38"h | 54"w x 72"h | Veneer | 5 | 21,700 | 22,275 |
| 42349/5D38 | 96"l x 48"w x 38"h | 54"w x 72"h | Laminate | 5 | 20,200 | 20,770 |
| 42350/2D38 | 96"l x 54"w x 38"h | 60"w x 72"h | Veneer | 6 | 22,785 | 23,475 |
| 42350/5D38 | 96"l x 54"w x 38"h | 60"w x 72"h | Laminate | 6 | 21,205 | 21,895 |
| 42351/2D38 | 96"l x 60"w x 38"h | 66"w x 72"h | Veneer | 7½ | 23,925 | 24,790 |
| 42351/5D38 | 96"l x 60"w x 38"h | 66"w x 72"h | Laminate | 7½ | 22,250 | 23,115 |
| 42352/2D38 | 72"l x 45"w x 38"h | 54"w x 72"h | Veneer | 4 | 19,090 | 19,555 |
| 42352/5D38 | 72"l x 45"w x 38"h | 54"w x 72"h | Laminate | 4 | 17,770 | 18,230 |
| 42353/2D38 | 72"l x 55"w x 38"h | 60"w x 72"h | Veneer | 4 | 20,775 | 21,240 |
| 42353/5D38 | 72"l x 55"w x 38"h | 60"w x 72"h | Laminate | 4 | 19,330 | 19,790 |
| 42354/2D38 | 84"l x 45"w x 38"h | 54"w x 72"h | Veneer | 5 | 21,045 | 21,615 |
| 42354/5D38 | 84"l x 45"w x 38"h | 54"w x 72"h | Laminate | 5 | 19,580 | 20,150 |
| 42355/2D38 | 84"l x 55"w x 38"h | 60"w x 72"h | Veneer | 6 | 22,915 | 23,600 |
| 42355/5D38 | 84"l x 55"w x 38"h | 60"w x 72"h | Laminate | 6 | 21,315 | 22,005 |

- 42" wide Gateway Media Wall accommodates a maximum monitor of 43".
- 48" wide Gateway Media Wall accommodates a maximum monitor of 46".
- 54" wide Gateway Media Wall accommodates a maximum monitor of 55".
- 60", 66" wide Gateway Media Wall accommodates a maximum monitor of 60".
- 72", 84", 96" wide Gateway Media Wall accommodates a maximum monitor of 65".
- Flat panel monitors and mounting brackets to be supplied by customer and are not included in above pricing.
- Connectivity devices are to be ordered separately and cost is not reflected in above pricing. Refer to page 51-52 & 64-70 for more information.
- COM yardage for 96"w x 63"h straight screen is 11¼ yards, for 96"w x 72"h straight screen is 13¼ yards.
- For veneer, plastic laminate or markerboard finish on Straight Media Wall, contact customer service for pricing.
- Please contact customer service for pricing Gateway Media Wall.

GATEWAY™ MEDIA WALL TABLES

HEIGHT ADJUSTABLE MEDIA WALL TABLES - ROUND TOP

— US ONLY —

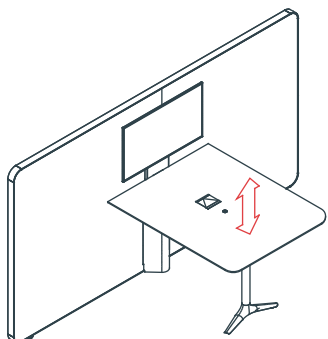
| | Model Number | Table Dimensions | Media Wall Dimensions | Top Finish | Fabric Yrd | List Price | |
|-----------------------------------------------------------------------------------------------------------------------------------------------|------------------|--------------------------|-----------------------|-----------------|------------|---------------|-----------------|
| | | | | | | COM | KnollTextiles 1 |
| Height Adjustable Table with Straight Media Wall:  | 42356/2RA | 36"dia x 27"-42"h | 42"w x 72"h | Veneer | 4 | 17,230 | 17,690 |
| | 42356/5RA | 36"dia x 27"-42"h | 42"w x 72"h | Laminate | 4 | 16,425 | 16,885 |
| | 42357/2RA | 42"dia x 27"-42"h | 48"w x 72"h | Veneer | 4 | 18,000 | 18,460 |
| | 42357/5RA | 42"dia x 27"-42"h | 48"w x 72"h | Laminate | 4 | 17,160 | 17,620 |
| | 42358/2RA | 48"dia x 27"-42"h | 54"w x 72"h | Veneer | 5 | 18,815 | 19,385 |
| | 42358/5RA | 48"dia x 27"-42"h | 54"w x 72"h | Laminate | 5 | 17,920 | 18,495 |
| | 42359/2RA | 54"dia x 27"-42"h | 60"w x 72"h | Veneer | 6 | 19,620 | 20,310 |
| | 42359/5RA | 54"dia x 27"-42"h | 60"w x 72"h | Laminate | 6 | 18,690 | 19,380 |
| | 42360/2RA | 60"dia x 27"-42"h | 66"w x 72"h | Veneer | 7½ | 20,485 | 21,345 |
| | 42360/5RA | 60"dia x 27"-42"h | 66"w x 72"h | Laminate | 7½ | 19,505 | 20,365 |

- 42" wide Gateway Media Wall accommodates a maximum monitor of 43".
- 48" wide Gateway Media Wall accommodates a maximum monitor of 46".
- 54" wide Gateway Media Wall accommodates a maximum monitor of 55".
- 60", 66" wide Gateway Media Wall accommodates a maximum monitor of 60".
- 72", 84", 96" wide Gateway Media Wall accommodates a maximum monitor of 65".
- Flat panel monitors and mounting brackets to be supplied by customer and are not included in above pricing.
- Connectivity devices are to be ordered separately and cost is not reflected in above pricing. Refer to page ?? for more information.
- COM yardage for 96"w x 63"h straight screen is 11-1/4" yards, for 96"w x 72"h straight screen is 13-1/4" yards.
- For veneer, plastic laminate or markerboard finish on Straight Media Wall, contact customer service for pricing.
- Please contact customer service for pricing Gateway Media Wall.

GATEWAY™ MEDIA WALL TABLES

HEIGHT ADJUSTABLE MEDIA WALL TABLES - RECTANGLE WITH SOFT CORNER TOP

— US ONLY —

| | Model Number | Table Dimensions | Media Wall Dimensions | Top Finish | Fabric Yrd | List Price | |
|--------------------------------------------------------------------------------------------------------------------------------------------|------------------|-------------------------------|-----------------------|-----------------|------------|---------------|-----------------|
| | | | | | | COM | KnollTextiles 1 |
| Height Adjustable Table with Straight Media Wall:  | 42361/2SA | 60"l x 36"w x 27"-42"h | 42"w x 72"h | Veneer | 4 | 17,470 | 17,930 |
| | 42361/5SA | 60"l x 36"w x 27"-42"h | 42"w x 72"h | Laminate | 4 | 16,425 | 16,885 |
| | 42362/2SA | 60"l x 42"w x 27"-42"h | 48"w x 72"h | Veneer | 6 | 18,260 | 18,950 |
| | 42362/5SA | 60"l x 42"w x 27"-42"h | 48"w x 72"h | Laminate | 6 | 17,165 | 17,850 |
| | 42363/2SA | 60"l x 48"w x 27"-42"h | 54"w x 72"h | Veneer | 7½ | 19,050 | 19,910 |
| | 42363/5SA | 60"l x 48"w x 27"-42"h | 54"w x 72"h | Laminate | 7½ | 17,900 | 18,760 |
| | 42364/2SA | 60"l x 54"w x 27"-42"h | 60"w x 72"h | Veneer | 7½ | 19,885 | 20,745 |
| | 42364/5SA | 60"l x 54"w x 27"-42"h | 60"w x 72"h | Laminate | 7½ | 18,670 | 19,530 |
| | 42365/2SA | 72"l x 36"w x 27"-42"h | 42"w x 72"h | Veneer | 4 | 18,370 | 18,835 |
| | 42365/5SA | 72"l x 36"w x 27"-42"h | 42"w x 72"h | Laminate | 4 | 17,265 | 17,725 |
| | 42366/2SA | 72"l x 42"w x 27"-42"h | 48"w x 72"h | Veneer | 6 | 19,165 | 19,855 |
| | 42366/5SA | 72"l x 42"w x 27"-42"h | 48"w x 72"h | Laminate | 6 | 18,010 | 18,700 |
| | 42367/2SA | 72"l x 48"w x 27"-42"h | 54"w x 72"h | Veneer | 7½ | 20,000 | 20,860 |
| | 42367/5SA | 72"l x 48"w x 27"-42"h | 54"w x 72"h | Laminate | 7½ | 18,780 | 19,645 |
| | 42368/2SA | 72"l x 54"w x 27"-42"h | 60"w x 72"h | Veneer | 7½ | 20,875 | 21,735 |
| | 42368/5SA | 72"l x 54"w x 27"-42"h | 60"w x 72"h | Laminate | 7½ | 19,595 | 20,455 |
| | 42369/2SA | 84"l x 36"w x 27"-42"h | 42"w x 72"h | Veneer | 4 | 19,320 | 19,785 |
| | 42369/5SA | 84"l x 36"w x 27"-42"h | 42"w x 72"h | Laminate | 4 | 18,150 | 18,615 |
| | 42370/2SA | 84"l x 42"w x 27"-42"h | 48"w x 72"h | Veneer | 6 | 20,170 | 20,855 |
| | 42370/5SA | 84"l x 42"w x 27"-42"h | 48"w x 72"h | Laminate | 6 | 18,935 | 19,620 |
| | 42371/2SA | 84"l x 48"w x 27"-42"h | 54"w x 72"h | Veneer | 7½ | 21,050 | 21,910 |
| | 42371/5SA | 84"l x 48"w x 27"-42"h | 54"w x 72"h | Laminate | 7½ | 19,760 | 20,620 |
| | 42372/2SA | 84"l x 54"w x 27"-42"h | 60"w x 72"h | Veneer | 7½ | 21,985 | 22,845 |
| | 42372/5SA | 84"l x 54"w x 27"-42"h | 60"w x 72"h | Laminate | 7½ | 20,630 | 21,490 |
| | 42373/2SA | 84"l x 60"w x 27"-42"h | 66"w x 72"h | Veneer | 8 | 22,960 | 23,880 |
| | 42373/5SA | 84"l x 60"w x 27"-42"h | 66"w x 72"h | Laminate | 8 | 21,540 | 22,455 |
| | 42374/2SA | 96"l x 42"w x 27"-42"h | 48"w x 72"h | Veneer | 6 | 21,235 | 21,920 |
| | 42374/5SA | 96"l x 42"w x 27"-42"h | 48"w x 72"h | Laminate | 6 | 19,925 | 20,615 |
| | 42375/2SA | 96"l x 48"w x 27"-42"h | 54"w x 72"h | Veneer | 7½ | 22,180 | 23,040 |
| | 42375/5SA | 96"l x 48"w x 27"-42"h | 54"w x 72"h | Laminate | 7½ | 20,805 | 21,665 |
| | 42376/2SA | 96"l x 54"w x 27"-42"h | 60"w x 72"h | Veneer | 7½ | 23,150 | 24,010 |
| | 42376/5SA | 96"l x 54"w x 27"-42"h | 60"w x 72"h | Laminate | 7½ | 21,715 | 22,575 |
| | 42377/2SA | 96"l x 60"w x 27"-42"h | 66"w x 72"h | Veneer | 8 | 24,185 | 25,105 |
| | 42377/5SA | 96"l x 60"w x 27"-42"h | 66"w x 72"h | Laminate | 8 | 22,670 | 23,590 |

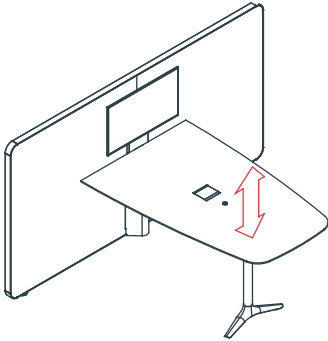
- 42" wide Gateway Media Wall accommodates a maximum monitor of 43".
- 48" wide Gateway Media Wall accommodates a maximum monitor of 46".
- 54" wide Gateway Media Wall accommodates a maximum monitor of 55".
- 60", 66" wide Gateway Media Wall accommodates a maximum monitor of 60".
- 72", 84", 96" wide Gateway Media Wall accommodates a maximum monitor of 65".
- Flat panel monitors and mounting brackets to be supplied by customer and are not included in above pricing.
- Connectivity devices are to be ordered separately and cost is not reflected in above pricing. Refer to page 94-104 for more information.
- COM yardage for 96"w x 63"h straight screen is 11¼" yards, for 96"w x 72"h straight screen is 13¼" yards.
- For veneer, plastic laminate or markerboard finish on Straight Media Wall, contact customer service for pricing.
- Please contact customer service for pricing Gateway Media Wall.

GATEWAY™ MEDIA WALL TABLES

HEIGHT ADJUSTABLE MEDIA WALL TABLES - VISTA TOP

— US ONLY —

Height Adjustable Table with Straight Media Wall:



| Model Number | Table Dimensions | Media Wall Dimensions | Top Finish | Fabric Yrd | List Price | |
|------------------|--------------------------------------|-----------------------|-----------------|------------|---------------|-----------------|
| | | | | | COM | KnollTextiles 1 |
| 42361/2VA | 60"l x (26"-36")w x 27"-42"h | 42"w x 72"h | Veneer | 4 | 17,845 | 18,310 |
| 42361/5VA | 60"l x (26"-36")w x 27"-42"h | 42"w x 72"h | Laminate | 4 | 16,775 | 17,240 |
| 42362/2VA | 60"l x (27½"-42")w x 27"-42"h | 48"w x 72"h | Veneer | 6 | 18,660 | 19,350 |
| 42362/5VA | 60"l x (27½"-42")w x 27"-42"h | 48"w x 72"h | Laminate | 6 | 17,525 | 18,215 |
| 42363/2VA | 60"l x (32"-48")w x 27"-42"h | 54"w x 72"h | Veneer | 7½ | 19,475 | 20,335 |
| 42363/5VA | 60"l x (32"-48")w x 27"-42"h | 54"w x 72"h | Laminate | 7½ | 18,285 | 19,145 |
| 42364/2VA | 60"l x (32"-54")w x 27"-42"h | 60"w x 72"h | Veneer | 7½ | 20,325 | 21,185 |
| 42364/5VA | 60"l x (32"-54")w x 27"-42"h | 60"w x 72"h | Laminate | 7½ | 19,070 | 19,930 |
| 42365/2VA | 72"l x (26"-36")w x 27"-42"h | 42"w x 72"h | Veneer | 4 | 18,775 | 19,240 |
| 42365/5VA | 72"l x (26"-36")w x 27"-42"h | 42"w x 72"h | Laminate | 4 | 17,630 | 18,095 |
| 42366/2VA | 72"l x (27½"-42")w x 27"-42"h | 48"w x 72"h | Veneer | 6 | 19,590 | 20,280 |
| 42366/5VA | 72"l x (27½"-42")w x 27"-42"h | 48"w x 72"h | Laminate | 6 | 18,395 | 19,080 |
| 42367/2VA | 72"l x (32"-48")w x 27"-42"h | 54"w x 72"h | Veneer | 7½ | 20,440 | 21,300 |
| 42367/5VA | 72"l x (32"-48")w x 27"-42"h | 54"w x 72"h | Laminate | 7½ | 19,180 | 20,040 |
| 42368/2VA | 72"l x (32"-54")w x 27"-42"h | 60"w x 72"h | Veneer | 7½ | 21,345 | 22,205 |
| 42368/5VA | 72"l x (32"-54")w x 27"-42"h | 60"w x 72"h | Laminate | 7½ | 20,020 | 20,880 |
| 42369/2VA | 84"l x (26"-36")w x 27"-42"h | 42"w x 72"h | Veneer | 4 | 19,755 | 20,215 |
| 42369/5VA | 84"l x (26"-36")w x 27"-42"h | 42"w x 72"h | Laminate | 4 | 18,550 | 19,015 |
| 42370/2VA | 84"l x (27½"-42")w x 27"-42"h | 48"w x 72"h | Veneer | 6 | 20,610 | 21,295 |
| 42370/5VA | 84"l x (27½"-42")w x 27"-42"h | 48"w x 72"h | Laminate | 6 | 19,355 | 20,040 |
| 42371/2VA | 84"l x (32"-48")w x 27"-42"h | 54"w x 72"h | Veneer | 7½ | 21,520 | 22,385 |
| 42371/5VA | 84"l x (32"-48")w x 27"-42"h | 54"w x 72"h | Laminate | 7½ | 20,190 | 21,050 |
| 42372/2VA | 84"l x (32"-54")w x 27"-42"h | 60"w x 72"h | Veneer | 7½ | 22,470 | 23,335 |
| 42372/5VA | 84"l x (32"-54")w x 27"-42"h | 60"w x 72"h | Laminate | 7½ | 21,085 | 21,945 |
| 42373/2VA | 84"l x (32"-60")w x 27"-42"h | 66"w x 72"h | Veneer | 8 | 23,475 | 24,395 |
| 42373/5VA | 84"l x (32"-60")w x 27"-42"h | 66"w x 72"h | Laminate | 8 | 22,010 | 22,930 |
| 42374/2VA | 96"l x (27½"-42")w x 27"-42"h | 48"w x 72"h | Veneer | 6 | 21,700 | 22,390 |
| 42374/5VA | 96"l x (27½"-42")w x 27"-42"h | 48"w x 72"h | Laminate | 6 | 20,360 | 21,050 |
| 42375/2VA | 96"l x (32"-48")w x 27"-42"h | 54"w x 72"h | Veneer | 7½ | 22,665 | 23,530 |
| 42375/5VA | 96"l x (32"-48")w x 27"-42"h | 54"w x 72"h | Laminate | 7½ | 21,260 | 22,120 |
| 42376/2VA | 96"l x (32"-54")w x 27"-42"h | 60"w x 72"h | Veneer | 7½ | 23,675 | 24,535 |
| 42376/5VA | 96"l x (32"-54")w x 27"-42"h | 60"w x 72"h | Laminate | 7½ | 22,200 | 23,060 |
| 42377/2VA | 96"l x (32"-60")w x 27"-42"h | 66"w x 72"h | Veneer | 8 | 24,735 | 25,655 |
| 42377/5VA | 96"l x (32"-60")w x 27"-42"h | 66"w x 72"h | Laminate | 8 | 23,185 | 24,105 |

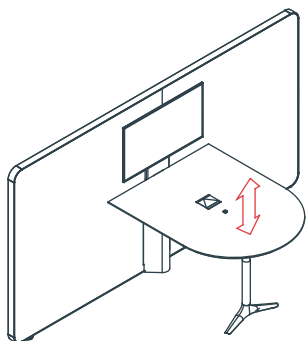
- 42" wide Gateway Media Wall accommodates a maximum monitor of 43".
- 48" wide Gateway Media Wall accommodates a maximum monitor of 46".
- 54" wide Gateway Media Wall accommodates a maximum monitor of 55".
- 60", 66" wide Gateway Media Wall accommodates a maximum monitor of 60".
- 72", 84", 96" wide Gateway Media Wall accommodates a maximum monitor of 65".
- Flat panel monitors and mounting brackets to be supplied by customer and are not included in above pricing.
- Connectivity devices are to be ordered separately and cost is not reflected in above pricing. Refer to page 51-52 & 64-70 for more information.
- COM yardage for 96"w x 63"h straight screen is 11-1/4" yards, for 96"w x 72"h straight screen is 13-1/4" yards.
- For veneer, plastic laminate or markerboard finish on Straight Media Wall, contact customer service for pricing.
- Please contact customer service for pricing Gateway Media Wall.

GATEWAY™ MEDIA WALL TABLES

HEIGHT ADJUSTABLE MEDIA WALL TABLES - D-END TOP

— US ONLY —

Height Adjustable Table with Straight Media Wall:



| Model Number | Table Dimensions | Media Wall Dimensions | Top Finish | Fabric Yrd | List Price | |
|------------------|-------------------------------|-----------------------|-----------------|------------|---------------|-----------------|
| | | | | | COM | KnollTextiles 1 |
| 42361/2DA | 60"l x 36"w x 27"-42"h | 42"w x 72"h | Veneer | 4 | 18,235 | 18,700 |
| 42361/5DA | 60"l x 36"w x 27"-42"h | 42"w x 72"h | Laminate | 4 | 17,135 | 17,595 |
| 42362/2DA | 60"l x 42"w x 27"-42"h | 48"w x 72"h | Veneer | 6 | 19,060 | 19,750 |
| 42362/5DA | 60"l x 42"w x 27"-42"h | 48"w x 72"h | Laminate | 6 | 17,905 | 18,595 |
| 42363/2DA | 60"l x 48"w x 27"-42"h | 54"w x 72"h | Veneer | 7½ | 19,895 | 20,755 |
| 42363/5DA | 60"l x 48"w x 27"-42"h | 54"w x 72"h | Laminate | 7½ | 18,680 | 19,545 |
| 42364/2DA | 60"l x 54"w x 27"-42"h | 60"w x 72"h | Veneer | 7½ | 20,770 | 21,630 |
| 42364/5DA | 60"l x 54"w x 27"-42"h | 60"w x 72"h | Laminate | 7½ | 19,495 | 20,355 |
| 42365/2DA | 72"l x 36"w x 27"-42"h | 42"w x 72"h | Veneer | 4 | 19,175 | 19,635 |
| 42365/5DA | 72"l x 36"w x 27"-42"h | 42"w x 72"h | Laminate | 4 | 18,020 | 18,480 |
| 42366/2DA | 72"l x 42"w x 27"-42"h | 48"w x 72"h | Veneer | 6 | 20,015 | 20,705 |
| 42366/5DA | 72"l x 42"w x 27"-42"h | 48"w x 72"h | Laminate | 6 | 18,790 | 19,480 |
| 42367/2DA | 72"l x 48"w x 27"-42"h | 54"w x 72"h | Veneer | 7½ | 20,890 | 21,755 |
| 42367/5DA | 72"l x 48"w x 27"-42"h | 54"w x 72"h | Laminate | 7½ | 19,605 | 20,465 |
| 42368/2DA | 72"l x 54"w x 27"-42"h | 60"w x 72"h | Veneer | 7½ | 21,815 | 22,675 |
| 42368/5DA | 72"l x 54"w x 27"-42"h | 60"w x 72"h | Laminate | 7½ | 20,465 | 21,330 |
| 42369/2DA | 84"l x 36"w x 27"-42"h | 42"w x 72"h | Veneer | 4 | 20,180 | 20,640 |
| 42369/5DA | 84"l x 36"w x 27"-42"h | 42"w x 72"h | Laminate | 4 | 18,950 | 19,410 |
| 42370/2DA | 84"l x 42"w x 27"-42"h | 48"w x 72"h | Veneer | 6 | 21,070 | 21,760 |
| 42370/5DA | 84"l x 42"w x 27"-42"h | 48"w x 72"h | Laminate | 6 | 19,775 | 20,460 |
| 42371/2DA | 84"l x 48"w x 27"-42"h | 54"w x 72"h | Veneer | 7½ | 21,995 | 22,855 |
| 42371/5DA | 84"l x 48"w x 27"-42"h | 54"w x 72"h | Laminate | 7½ | 20,635 | 21,495 |
| 42372/2DA | 84"l x 54"w x 27"-42"h | 60"w x 72"h | Veneer | 7½ | 22,975 | 23,835 |
| 42372/5DA | 84"l x 54"w x 27"-42"h | 60"w x 72"h | Laminate | 7½ | 21,560 | 22,420 |
| 42373/2DA | 84"l x 60"w x 27"-42"h | 66"w x 72"h | Veneer | 8 | 24,000 | 24,920 |
| 42373/5DA | 84"l x 60"w x 27"-42"h | 66"w x 72"h | Laminate | 8 | 22,495 | 23,410 |
| 42374/2DA | 96"l x 42"w x 27"-42"h | 48"w x 72"h | Veneer | 6 | 22,190 | 22,875 |
| 42374/5DA | 96"l x 42"w x 27"-42"h | 48"w x 72"h | Laminate | 6 | 20,815 | 21,500 |
| 42375/2DA | 96"l x 48"w x 27"-42"h | 54"w x 72"h | Veneer | 7½ | 23,175 | 24,035 |
| 42375/5DA | 96"l x 48"w x 27"-42"h | 54"w x 72"h | Laminate | 7½ | 21,735 | 22,600 |
| 42376/2DA | 96"l x 54"w x 27"-42"h | 60"w x 72"h | Veneer | 7½ | 24,210 | 25,070 |
| 42376/5DA | 96"l x 54"w x 27"-42"h | 60"w x 72"h | Laminate | 7½ | 22,690 | 23,550 |
| 42377/2DA | 96"l x 60"w x 27"-42"h | 66"w x 72"h | Veneer | 8 | 25,290 | 26,210 |
| 42377/5DA | 96"l x 60"w x 27"-42"h | 66"w x 72"h | Laminate | 8 | 23,695 | 24,615 |

- 42" wide Gateway Media Wall accommodates a maximum monitor of 43".
- 48" wide Gateway Media Wall accommodates a maximum monitor of 46".
- 54" wide Gateway Media Wall accommodates a maximum monitor of 55".
- 60", 66" wide Gateway Media Wall accommodates a maximum monitor of 60".
- 72", 84", 96" wide Gateway Media Wall accommodates a maximum monitor of 65".
- Flat panel monitors and mounting brackets to be supplied by customer and are not included in above pricing.
- Connectivity devices are to be ordered separately and cost is not reflected in above pricing. Refer to page 94-104 for more information.
- COM yardage for 96"w x 63"h straight screen is 11¼ yards, for 96"w x 72"h straight screen is 13¼ yards.
- For veneer, plastic laminate or markerboard finish on Straight Media Wall, contact customer service for pricing.
- Please contact customer service for pricing Gateway Media Wall.

TERMS AND CONDITIONS OF SALE

PRICES

All prices are list prices, freight included, blanket-wrapped, dock delivered, from the manufacturing source to any location in the contiguous United States.

Brokerage is paid by Nienkämper for product shipped to the United States.

Due to existing conditions in regard to cost of labor and materials, we reserve the right to change prices without notice.

TERMS

Net 30 days from date of invoice to accredited buyers. Two per cent (2%) interest charged monthly on overdue accounts. Deposit of 50% is required with order. Terms will be established upon credit evaluation. Due to delays in processing references, first orders may be treated as C.B.D. orders.

ORDER CONFIRMATION

Orders are accepted upon issuance of our order confirmation and are subject to the terms set forth therein; notwithstanding any variance from the terms of the buyer's order form.

Nienkämper is not liable for any delay or failure to deliver caused by labor or transportation difficulties, accidents, acts of God, failure of sources of supply, or other causes beyond our control, and changes will affect the delivery date.

CHANGE OF ORDERS OR CANCELLATIONS

Changes or cancellations are subject to our ability to conform. A charge will be levied against cancelled or changed orders based on costs already incurred by Nienkämper. All changes must be in writing and submitted on a revised purchase order. Changes will affect the delivery date.

STORAGE

If goods cannot be accepted when ready, we may transfer them to storage (which is to be deemed as delivery for invoice purposes). The customer accepts risks and will be charged at prevailing rates.

FREIGHT

Prices include freight charges, blanket-wrapped, dock delivered, from the manufacturing source to any location in the contiguous United States. Packing and/or crating are available, if required, upcharges apply.

CLAIMS

All furniture is given to the carrier and signed for in good condition. It is the responsibility of the receiver to sign for the goods in the presence of the carrier and note the condition in which they are received. Freight claims should be filed with the carrier.

WARRANTY

There are no express or implied warranties, conditions and obligations of the manufacturer, whether statutory or otherwise that extend beyond the description on the face hereof. Our furniture is made to the highest standard and is warranted free from defects of material and workmanship for five years from the date of delivery. During the warranty period we will repair or replace such merchandise as shall prove to be defective, during normal usage in accordance with manufacturer's specifications. The manufacturer shall not be liable for defect wholly attributable to normal manufacturing process. Replacement or repair of the Product shall be the sole remedy of the Customer, and the manufacturer shall not be liable for any direct, indirect, incidental, or consequential loss or damage suffered by the Customer by reason of any defect in workmanship or manufacture of the Product or inability to use the Product. Moreover, this warranty does not cover accidental damage, abuse, alteration, ordinary wear and tear of Goods, negligence and misuse nor variations over which we have no control such as heat or humidity or damage to which the Goods are connected that is not attributable to the failure of the goods themselves. This warranty is null and void when the product is installed with hardware other than that supplied and/or when installed differently than recommended in the installation guide. Modification to the product or hardware may result in failure of the product and cause damage and/or injury.

WOOD FINISHES

Nienkämper offers a wide variety of standard light finishes on cherry, mahogany and figured anagré wood veneers, and a clear natural finish on figured anagré, figured sycamore, maple, bird's eye maple and curly maple.

Light finishes do not mask the grain and other characteristics of each wood species. It is important to understand that pieces of the same type of wood will not look identical when a light finish is used. The appearance of the finish will also depend on the natural color of the veneer. Cherry darkens over time as the wood ages. Pin knots and gum pockets are inherent traits.

Wood is a naturally variable raw material; its variances are not within the furniture manufacturer's control and are therefore not considered defects under this warranty.