

## Gateway™ Free Standing Height Adjustable Media Tables:

- Height Adjustable Media tables offer flexibility with its sit / stand height capability.
- Tables feature Round, Vista, Rectangle with soft corners & D end top with electric Gateway™ height adjustable bases.
- An optional upholstered panel with silver anodized trim is available to hide the back of the TV.
- Built in storage available through the addition of a hinged door storage case
- Table sizes available for selection:

Table Shape	Table Length	Table Depth	Table Height
Vista	60", 72", 84", 96"	42", 48", 54", 60"	27" - 54"
Rectangle w/ Soft Corners	60", 72", 84", 96"	42", 48", 54", 60"	27" - 54"
D-End	60", 72", 84", 96"	42", 48", 54", 60"	27" - 54"

- Tables can be specified with a variety of power / data / video / audio solutions for singular and group requirement.
- This table includes an under surface 4 port power unit with coiled, expandable power cable.
- Cables exit the case via openings in the bottom. Contact Customer Service if you require a specific wire exit location.
- A fixed bracket is standard for mounting TV monitors to the end of the table.
- For installations with large amounts of cable an additional Cable Conduit can be purchased.
- Door locks are optional for storage case.



Table with Upholstered Panel



Storage Case with Height Adj Table and Optional TV Bracket

## Gateway™ Conference and Stand-Alone Tables:

- Gateway™ Conference and Stand Alone Tables are an excellent solution for boardrooms and lounges alike.
- Gateway™ conference table tops are available with a wide variety of top shapes, sizes and edges to meet your needs.
- Tops are available in all standard veneer and plastic laminate finishes.
- Interlayer glass top is also available upon request, please contact customer service for details.
- Gateway™ bases are available in mirror polished and all standard Nienkämper powder coat finishes.
- Tables can be specified with a variety of power / data / video / audio solutions for singular and group requirement.
- Wiring runs concealed through base and grommets. For large capacity of cable management, cable conduit is necessary.



Prices include freight charges, blanket wrapped, dock delivered, from the manufacturing source to any location in the contiguous United States. Packing and/or crating are available, if required, upcharges apply.

# GATEWAY™ FREESTANDING HEIGHT ADJUSTABLE MEDIA TABLES

## FEATURES & OPTIONS

Design - busk + hertzog

### Top Options:

### Dimensions:

- Table depths: 36" to 60" depending on shape of the top.
- Table lengths are available from 60" to 96"
- Standard top thickness is 1 1/4"

### Top Shape:

- Standard top shapes are Round, Vista, Rectangle with soft corners & D End

### Edges:

- 2" Taper edge is standard but Self edge also available.

### Material / Finishes:

- Gateway Height Adjustable Media Table tops and storage cases are available in all Nienkämper high quality veneers and finishes.
- All standard plastic laminates are also available.
- Contact customer service if custom p-lam / veneer is required.
- Upholstered panels are tackable and offered in one size (66" x 47" x 1 1/4") and come standard with KnollTextiles fabric on both sides and silver anodized aluminum trim.
- COM is also acceptable in most cases.

### Standard features:

- Gateway Height Adjustable Media Table has a fixed TV bracket in which client's own TV mounting bracket can mount directly onto the table. The TV then rides with the movement of the table.
- Flat screen monitors and mounts are not included. For additional information on TV mounting bracket, see page 30.
- This table includes (as standard) an under surface 4 port power unit with coiled, expandable power cable.
- Lift movement is controlled by a flush mount switch recessed in the top.

### Connectivity Options:

- Tables can be specified with a variety of power/data/video/audio solutions for singular and group requirement.
- The system can also be customized to suit customer specific equipment. Contact customer service for details
- Refer to page 153-165 for more information on connectivity.

### Base Features & Options:

### Dimensions:

- Gateway Free Standing Height Adjustable Media tables offer premium electric lift columns on 2 sizes of foot (24" and 34"). Lift range is 27" - 53" with a maximum weight capacity of 269lbs.
- Wiring is managed with the coiled power cord to the wall, with cable conduit (not incl) or through the storage case.

### Finishes:

- Height adjustable posts are standard with gray painted post and polished foot. Mirror polished as well as black and white powder coat posts and foot are available for an upcharge



Table with Upholstered Panel



Storage Case with Height Adj Table and Optional TV Bracket



Vox® M Forum



Simple Popup Forum



Simple Forum

## GATEWAY™ COLLECTION FINISHES — VENEER

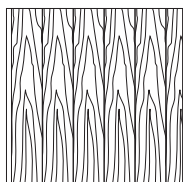
All wood surfaces are protected with a durable polyurethane clear lacquer with UV inhibitor. This finish is known for its exceptional durability, as well as abrasion, chemical, impact and scratch resistance. Standard sheen level is 45 degrees. Optional matte, 5, 10 and 35 degree sheen levels are available on request at no additional cost.

Wood Species	Order Code	Veneer/Stain	Upcharge
Maple	F-01	Natural Maple	No upcharge applies.
	F-02	Natural Curly Maple - Rotary Cut	Add 15%.
	F-03	Natural Bird's Eye Maple - Rotary Cut	Call Customer Service for pricing.
	F-04	Maple Stained Pear	No upcharge applies.
Cherry	F-05	Natural Cherry	No upcharge applies.
	F-06	Standard Cherry	No upcharge applies.
	F-07	Cherry Stained Amber	No upcharge applies.
	F-08	Cherry Stained Auburn	No upcharge applies.
	F-09	Cherry Stained Burgundy	No upcharge applies.
Mahogany	F-10	Light Mahogany	No upcharge applies.
	F-11	Medium Mahogany	No upcharge applies.
	F-12	Dark Mahogany	No upcharge applies.
	F-13	Red Mahogany	No upcharge applies.
Anagré	F-14	Natural Figured Anagré - Qtr. Cut Book-Match	Add 15%.
	F-15	Figured Anagré Stained Amber - Qtr. Cut Book-Match	Add 15%.
Sycamore	F-16	Natural Figured Sycamore - Qtr. Cut Book-Match	Add 15%.
Walnut	F-17	Burnt Walnut	No upcharge applies.
	F-19	Natural Walnut- Flat Cut Book-Match	No upcharge applies.
	F-19FM	Natural Walnut- Flat Cut Book-Match (matte sheen)	No upcharge applies.
	F-27F	Creamy Walnut- Flat Cut Book-Match (10° sheen)	No upcharge applies.
	F-27R	Creamy Walnut - Rift Cut Slip-Match (10° sheen)	Add 5%
	F-28	Tawny Walnut	No upcharge applies.
	F-31FM	Autumn Walnut- Flat Cut Book-Match (matte sheen)	No upcharge applies.
	F-31RM	Autumn Walnut - Rift Cut Slip-Match (matte sheen)	Add 5%
Oak	F-18F	Natural White Oak - Flat Cut Book-Match (10° sheen)	No upcharge applies.
	F-18R	Natural White Oak - Rift Cut Slip-Match (10° sheen)	Add 5%
	F-26	Charcoal Ash On Oak- Flat Cut Book- Match (10° sheen)	No upcharge applies.
	F-29F	Smoky Oak - Flat Cut Book-Match	No upcharge applies.
	F-29R	Smoky Oak - Rift Cut Slip-Match	Add 5%
	F-29FM	Smoky Oak - Flat Cut Book-Match (matte sheen)	No upcharge applies.
	F-29RM	Smoky Oak - Rift Cut Slip-Match (matte sheen)	Add 5%
	F-30FM	Whisper White Oak - Flat Cut Book-Match (matte sheen)	No upcharge applies.
	F-30RM	Whisper White Oak - Rift Cut Slip-Match (matte sheen)	Add 5%
	F-32FM	Cotton White Oak - Flat Cut Book-Match (matte sheen)	No upcharge applies.
F-32RM	Cotton White Oak - Rift Cut Slip-Match (matte sheen)	Add 5%	
Sapele – Ribbon Stripe	F-20	Natural Ribbon Strip Sapele - Qtr. Cut Slip-Match	No upcharge applies.
Moabi (Cherry substitute)	F-21	Natural Moabi - Quarter - Qtr. Cut Book-Match	No upcharge applies.
Cape Coast Walnut	F-22	Dark Cape Coast Walnut - Qtr. Cut Slip-Match	No upcharge applies.
	F-23	Natural Cape Coast Walnut - Qtr. Cut Slip-Match	No upcharge applies.
	F-23	Natural Cape Coast Walnut - Qtr. Cut Slip-Match	No upcharge applies.
Ash	F-25	Slate Gray Ash - Qtr. Cut Slip-Match	No upcharge applies.

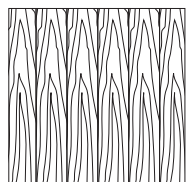
### VENEER GRAIN OPTIONS

Nienkämper products utilize the best quality veneers available, and, combined with Nienkämper's patented veneering systems, create work environments of incredible quality and beauty.

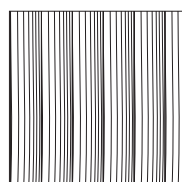
All veneer furniture comes standard with flat cut book-match veneer; flat cut slip-match veneer can also be specified. Quarter cut slip-match and quarter cut book-match veneers are available at a 5% upcharge. Figured Anagré and Figured Sycamore veneers are Quarter cut book-matched. Bird's Eye Maple and Curly Maple are rotary cut. Facet Edge, Taper edge, Flowform, Camber and Self edge tops with veneer are manufactured with a solid wood edge. All edges are then veneer wrapped to create a seamless profile top.



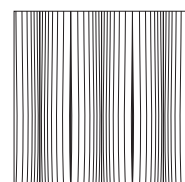
Standard V1  
Flat Cut Book-Match



Flat Cut Slip-Match V2



Quarter Cut Slip-Match V3  
Add 5%



Quarter Cut Book-Match V4  
Add 5%

## GATEWAY™ COLLECTION FINISHES — PLASTIC LAMINATES

Wood grain plastic laminate surfaces are available on table tops with Facet, Taper and Self edges.

These tops are manufactured with a solid wood edge that is applied prior to the laminate top surface. This method conceals the thickness of the wood edge, while providing the durability required. Wood edges are selected that most closely resemble both the species and the color of the laminate chosen

Nienkämper has pre-selected a number of standard wood grain plastic laminates that represent a cross section of both color and species. Simply include the order code with the model number to make these selections. Alternatively wood grain plastic laminates selected outside of Nienkämper's standard selection can be made by specifying the manufacturer as well as the description and model number of the laminate at the time of order.

Wood Grain Plastic Laminate Surfaces	Order Code	Manufacturer #	Finish
Hardrock Maple	WL2	Pionite WM791-SD	Textured/Suede
Monticello Maple	WL5	Wilsonart 7925-38	Fine Velvet Texture
Fusion Maple	WL13	Wilsonart 7909-60	Matte
New Age Oak	WL14	Wilsonart 7938-38	Fine Velvet Texture
Wild Cherry	WL18	Wilsonart 7054-60	Matte
River Cherry	WL19	Wilsonart 7937-38	Fine Velvet Texture
Montana Walnut	WL20	Wilsonart 7110T-78	Fine Grain
Skyline Walnut	WL26	Wilsonart 7964K-12	Soft Grain
Continental Walnut	WL-29	Wilsonart 8232K-05	Timbergrain
Neo Walnut	WL-30	Wilsonart 7991-38	Fine Velvet Texture
Walnut Heights	WL-31	Wilsonart 7965K-12	Soft Grain
Grayed Oak	WL-32	Formica 5791-PG	Pure Grain Texture
Millennium Oak	WL-33	Formica 5887-58	Matte
Aged Ash	WL-34	Formica 8844-WR	Woodbrush
Lowell Ash	WL-35	Wilsonart 7994-38	Fine Velvet Texture
Natural Ash	WL-36	Formica 8843-WR	Woodbrush
Norwegian Ash	WL-37	Wilsonart 8241-38	Fine Velvet Texture
Weathered Ash	WL-38	Formica 8842-WR	Woodbrush
Smoky Brown Pear	WL-39	Formica 5488-26	Oiled Wood
Studio Teak	WL-40	Wilsonart 7960K-18	Linearity
Fawn Cypress	WL-41	Wilsonart 8208K-16	Casual Rustic
Landmark Wood	WL-42	Wilsonart 7981K-12	Soft Grain
Natural Cerise	WL-43	Formica 8863-58	Matte
Natural Recon	WL-44	Wilsonart 7996-38	Fine Velvet Texture
Pecan Woodline	WL-45	Formica 5883-58	Matte

To specify the wood grain laminate required simply add the Order Code WL\_ to the model number of the product.

Samples and specific technical data is available from your local sales representative or by contacting Nienkämper's Customer Service department at **800.668.9318**.

## GATEWAY™ COLLECTION FINISHES — PLASTIC LAMINATES

### COLORED P-LAM

Nienkämper has a number of solid color laminates to choose from, simply include the order code with the model number to make these selections. Alternatively plastic laminates selected outside of Nienkämper's standard selection can be made by specifying the manufacturer as well as the description and model number of the laminate at the time of order. Contact customer service for pricing.

Colored Plastic Laminates Surface	Order Code	Manufacturer #	Finish
Gray (Nienkämper - Light Gray/Putty)	CL-01	Wilsonart 1500-60	Matte
Plantinum Gray (Nienkämper - Medium Grey/Clay)	CL-02	Nevamar S6023T	Textured
Slate Grey (Nienkämper - Dark Grey)	CL-03	Wilsonart D91-60	Matte
Black	CL-04	Wilsonart 1595-60	Matte
Angel White	CL-05	Pionite SW-826SD	Textured/Suede
Frosty White	CL-06	Wilsonart 1573-60	Matte
White (for writable surface)	CL-07	Formica 949-90	Gloss

The unique composition offers extraordinary features coupled with a unique user experience. These include an ultra matte surface (eliminating glare), an ultra sofa feel, an anti-fingerprint surface, thermal healing of micro-scratches, increased durability as well as anti-bacterial and mold-resistant properties.

**Edgeband** matching all Fingerprint Resistant Plastic Laminate colors is only available when specifying a Taper edge. For Self edge tops 1" and 1 1/4" thick, matching edgeband are only available in Black (RL-01) and White (RL-03). When a matching edgeband is not available, the specified surface laminate is used on the edge. **Contact Customer Service for more details 800.668-9318.**

There is a 20% upcharge on our standard plastic laminate table pricing for Fingerprint Resistant Plastic Laminate.

Colored "Fingerprint Resistant" Plastic Laminate Surface	Order Code	Finish
Black	RL-01	Matte
Gray	RL-02	Matte
White	RL-03	Matte
Sand	RL-04	Matte
Brown	RL-05	Matte
Clay	RL-06	Matte
Beige	RL-07	Matte
Ash	RL-08	Matte
Smoke	RL-09	Matte

Edgeband to Match with Colored "Fingerprint Resistant" Plastic Laminate	Thickness	Order Code
Black	3/4", 1", 1-1/4"	RE-01
Gray	3/4"	RE-02
White	3/4", 1", 1-1/4"	RE-03
Sand	3/4"	RE-04
Brown	3/4"	RE-05
Clay	3/4"	RE-06
Beige	3/4"	RE-07
Ash	3/4"	RE-08
Smoke	3/4"	RE-09

# GATEWAY™ COLLECTION FINISHES — PLASTIC LAMINATES

---

## COLORED P-LAM

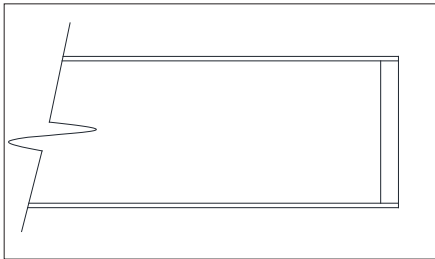
Both Taper and Self edge profiles are available with a colored laminate top.

**Laminate edging on Taper tops.** Edging will match the top surface and is applied before the surface laminate. By applying the laminate in this way, the seam is positioned horizontally, which makes it much less conspicuous and more durable.

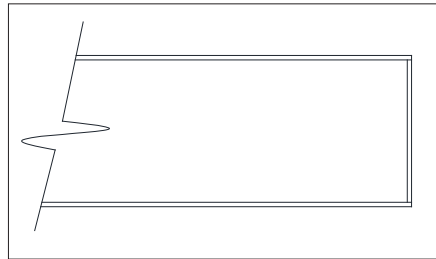
**Wood edging** on Self and Taper Edge tops are applied before the laminate. By applying the wood edge in this way, the wood edge thickness is concealed, while providing the durability required. Wood species and finishes for edging can be selected from page 8.

For laminates specified outside of Nienkämper's standard selection, specify the manufacturer as well as the description and model number of the laminate selected at the time of order. For Facet edge tops, the laminate must be a post-forming grade.

**Translucent edging** on Self and Taper edge tops is applied after the surface laminate. The translucent edge is very durable. Clear translucent edge provides a good match with most white-colored laminates, while a silver translucent edge provides a metallic look and contrast to colored plastic laminates.



Wood Edge Detail



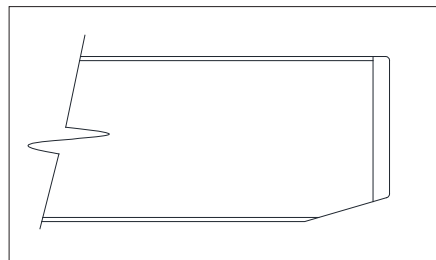
Laminate Edge Detail



Edge Band Detail



Translucent Edge Detail



1 1/4" Thick Self Edge with Translucent Edge Detail

## Powder Coat Paint Finish

Powder coat paint is a premium finish used for its exceptional durability and refined appearance. Applied as a dry powder and cured under heat, it forms a tough, uniform surface that resists chipping, scratching, and fading—ideal for commercial environments. Nienkämper offers a curated palette of 18 color variations to suit any project.



PC-01 Nienkämper Silver



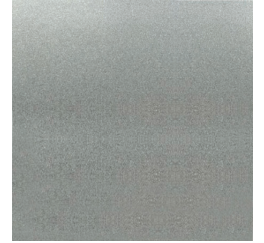
PC-02 Champagne



PC-03 Light Bronze



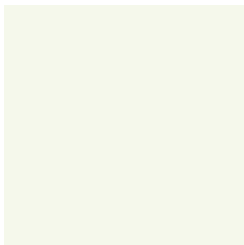
PC-04 Standard (Dark) Bronze



PC-05 Metallic Silver



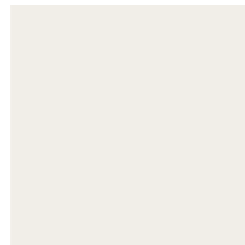
PC-06 Black Jack



PC-07 Warm White



PC-09 Red



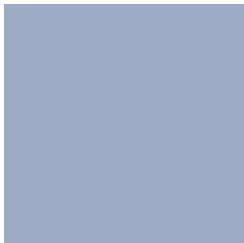
PC-12 Cool White



PC-14 Pure Orange



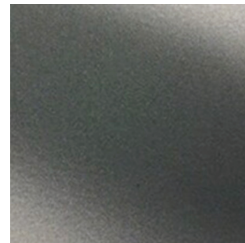
PC-16 Lime



PC-17 Sky Blue



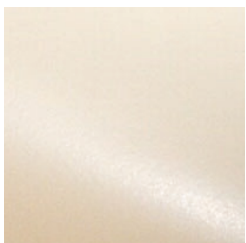
PC-18 Cobalt Blue



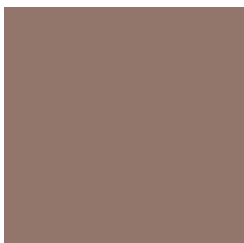
PC-22 Charcoal Gray (Matte)



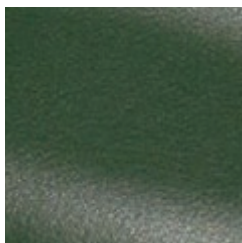
PC-24 Matte Red Clay



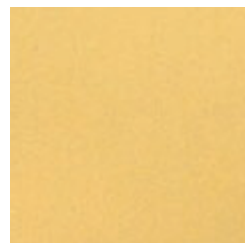
PC-25 Cream



PC-26 Mulberry (Matte)



PC-27 Forest Green (Matte)



PC-28 Mustard (Matte)

# GATEWAY™ COLLECTION - UPHOLSTERY DETAILS

**CUSTOMER'S OWN MATERIALS (COM):**

Nienkämper reserves the right to determine the suitability of a particular COM on our furniture. If we determine, in our judgment, that the COM is inappropriate for use on a particular product we will notify the customer. If you have any questions on the appropriateness of your COM please submit a sample to Customer Service prior to your order.

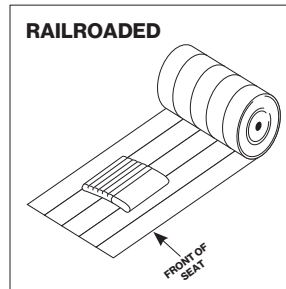
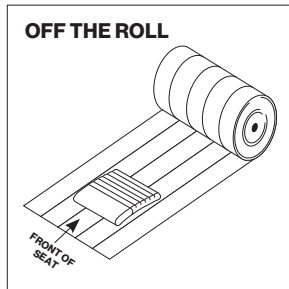
**KNOLL TEXTILES:**

All Nienkämper seating available in fabric includes pricing for four grades of fabric, see the KnollTextiles grade columns throughout this book. All fabric orders should be made when ordering the furniture. For KnollTextiles samples contact the KnollTextiles Customer Service department at 1.866.565.5858.

All yardage requirements are noted for each model number and option, refer to the pricing charts in this book. All yardage requirements shown in our price list are based on 54" plain material. Fabrics which have a repeat that must be matched, or are less than 54" wide, will require more yardage. Check with Customer Service before ordering. There may be yardage savings for quantity orders of the same model. Check with Customer Service before ordering. ALL COM WILL BE CUT AND APPLIED AT OUR DISCRETION UNLESS SPECIAL CUTTING INSTRUCTIONS ARE INCLUDED IN WRITING WITH THE ORDER. FABRIC PATTERNS SHOULD BE IDENTIFIED AS APPLIED VERTICALLY OR HORIZONTALLY ON A FRAME. WE CANNOT BE HELD RESPONSIBLE FOR RECEIPT OF DEFECTIVE FABRIC AS WE APPLY ALL COM AS FIRST QUALITY GOODS.

Fabric	Plain	2" - 14"	15" - 24"	25" - 27"	28" - 36"
Width	Fabric	Repeat	Repeat	Repeat	Repeat
54"	0%	10%	15%	20%	25%
50"	10%	20%	25%	30%	35%
48"	15%	25%	30%	35%	40%
45"	40%	50%	55%	60%	65%
36"	50%	60%	65%	70%	75%

We cannot be held responsible if yardage supplied is insufficient to complete an order.



**CUSTOMER'S OWN MATERIALS:**

All furniture listed in this price list that is available with leather has pricing in COL, refer to the COL column throughout this book. Leather is applied to avoid scars, however, some markings are inherent in this natural material. Square footage requirements are based on cow hides measuring 50 sq.ft. per hide. Consult Nienkämper's Customer Service Department for square footage requirements before ordering when using hides that do not meet these requirements. Application instructions must accompany all COL orders. In the absence of these instructions Nienkämper will determine the best method of upholstery.

**PLEASE CONTACT YOUR LOCAL REPRESENTATIVE:**

For Canada  
Customer supplied material must be sent prepaid to:

Nienkämper International, Inc.  
257 Finchdene Square  
Toronto, Ontario  
Canada M1X 1B9

From all locations outside of Canada  
Customer supplied material must be sent prepaid to:

Willson International Limited  
c/o Nienkämper  
257 Finchdene Square  
Toronto, Ontario  
Canada M1X 1B9

All packages must include a copy of a commercial invoice showing the exact yardage, value and fibre content of the fabric and must indicate our order confirmation number, or customer's purchase order number, and the furniture for which it is intended.

# GATEWAY™ COLLECTION - UPHOLSTERY DETAILS

An index of KnollTextiles fabric follows. Contact KnollTextiles customer service at 1.800.237.1625 for an updated listing. For fabric not graded in, please contact customer service for pricing.

## ALPHABETICAL INDEX:

CATEGORY 1	
Attire	466933
Boundary*	466735
Brigadoon*	466914
Calypso	466748
Chameleon*	466929
Color Field*	466712
Commuter Cloth	466879
Contour*	466950
Cozy Cord*	466938
Crossroad	466672
Day Tripper	466913
Delite	466730
Diva	466722
Dottie	466799
Entwine	466937
Facet*	466804
Ferry	466850
Hourglass	466846
Infinite	466734
Instinct	466921
Journey	466866
Keaton	466851
Knoll Hopsack	466729
Little Devil	466916
Oh La La	466671
Olympia	466808
Plaid On*	466947
Prairie*	466762
Prestini*	466953
Puff	466726
Reflect*	466927
Rush Hour II	466706
Shadow Play*	466759
Sonnet	466909
Summit	466694
Tinge*	466721
Topos*	466800
Uni-Form	466935
Utopia*	466867
Venue	466756
Vibe II*	466718
Westwood*	466757
Wild Thing*	466779

CATEGORY 2	
Aegean	466769
Atlas*	466702
Aurora, 1985	466954
Buzz	466719
Charm	466833
Circle Point*	466942
Cleo	466910
Code	466736
Currents*	466951
Dactyl*	466673
Durand*	466895
Flower Power	466946
Greenwich*	466878
Homage*	466943
Hudson*	466889
Hummingbird	466956
Island*	466765
Knoll Felt	466830
Magnolia*	466786
Midpoint	466789
Nature Walk*	466770
Off the Grid	466725
On Point*	466802
Palisade*	466763
Patchwork*	466801
Pathway*	466941
Placid*	466949
Plaidtastic*	466798
Premier*	466920
Pullman	466917
Rebel	466922
Retreat*	466944
Seurat	466811
Smart	466853
Tempest	466724
Texnet*	466760
Tight Rope*	466767
Utmost II	466931
Vice Versa*	466925
Whip*	466842
Wit*	466902
Woodland II*	466723
Wow Factor	466720

\* Fabric with "\*" is Bleach Cleanable

# GATEWAY™ COLLECTION - UPHOLSTERY DETAILS

An index of KnollTextiles follows. Contact KnollTextiles customer service at 1.800.237.1625 for an updated listing. For fabric not graded in, please contact customer service for pricing.

## ALPHABETICAL INDEX:

CATEGORY 3	
Alter Ego	466792
Arrondissement	466711
Atelier	466882
Biscayne	466890
Cameo	466674
Circa	466753
Classic Boucle	466777
Color Collage	466716
Dapper	466803
Eclat Weave	466773
Fancy Twill	466717
Feeling Plaid	466794
Ikat Square	466873
Imprint	466923
In Stitches	466908
It's Complicated*	466771
Looped In	466948
Melange	466696
Mod Plaid	466883
Modern Tweed	466795
Rivers	466806
Sherman	466841
Twist Tie	466701
Ultrasuede	466793
Vert	466955

CATEGORY 4	
Amore	466905
Arezzo	466776
Catwalk	466907
Chiseled	466919
Firefly	466901
Floressence	466924
In Step	466928
Rivington	466939
Stretch Appeal	466871
Striae Stripe	466930
Stripe It*	466683
Tara	466926
Utrillo	466945
World Piece	466713

NOT GRADED IN	
Chic	466932
Prince Hairy	466710
Guise	466862
Cato	466934
Dynamic	466709
Cummings	466816
Sandis	466807
North Island	466845
Digi Velvet	466727
Knoll Velvet	466693
Bella	466780
Byron	466906
Doily	466707
Limani	466704
Ita	466715
Lowell LUXE	466915

\* Fabric with "\*" is Bleach Cleanable

# GATEWAY™ COLLECTION - UPHOLSTERY DETAILS

An index of KnollTextiles follows. Contact KnollTextiles customer service at 1.800.237.1625 for an updated listing. For fabric not graded in, please contact customer service for pricing.

## NUMERICAL INDEX:

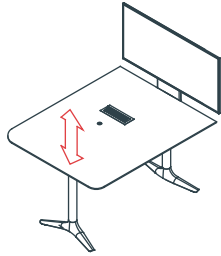
CATEGORY 1	
Oh La La	466671
Crossroad	466672
Summit	466694
Rush Hour II	466706
Color Field*	466712
Vibe II*	466718
Tinge*	466721
Diva	466722
Puff	466726
Knoll Hopsack	466729
Delite	466730
Infinite	466734
Boundary*	466735
Calypso	466748
Venue	466756
Westwood*	466757
Shadow Play*	466759
Prairie*	466762
Wild Thing*	466779
Dottie	466799
Topos*	466800
Facet*	466804
Olympia	466808
Hourglass	466846
Ferry	466850
Keaton	466851
Journey	466866
Utopia*	466867
Commuter Cloth	466879
Sonnet	466909
Day Tripper	466913
Brigadoon*	466914
Little Devil	466916
Instinct	466921
Reflect*	466927
Chameleon*	466929
Attire	466933
Uni-Form	466935
Entwine	466937
Cozy Cord*	466938
Plaid On*	466947
Contour*	466950
Prestini*	466953

CATEGORY 2	
Dactyl*	466673
Atlas*	466702
Buzz	466719
Wow Factor	466720
Woodland II*	466723
Tempest	466724
Off the Grid	466725
Code	466736
Texnet*	466760
Palisade*	466763
Island*	466765
Tight Rope*	466767
Aegean	466769
Nature Walk*	466770
Magnolia*	466786
Midpoint	466789
Plaidtastic*	466798
Patchwork*	466801
On Point*	466802
Seurat	466811
Knoll Felt	466830
Charm	466833
Whip*	466842
Smart	466853
Greenwich*	466878
Hudson*	466889
Durand*	466895
Wit*	466902
Cleo	466910
Pullman	466917
Premier*	466920
Rebel	466922
Vice Versa*	466925
Utmost II	466931
Pathway*	466941
Circle Point*	466942
Homage*	466943
Retreat*	466944
Flower Power	466946
Placid*	466949
Currents*	466951
Aurora, 1985	466954
Hummingbird	466956

\* Fabric with "\*" is Bleach Cleanable

# GATEWAY™ FREESTANDING HEIGHT ADJUSTABLE MEDIA TABLES RECTANGLE TOP WITH SOFT CORNERS

— US ONLY —



Model Number	Table Dimensions	Top Finish	List Price
42430/2SA	60"l x 36"w x 27"-53"h	Veneer	8,580
<b>42430/5SA</b>	<b>60"l x 36"w x 27"-53"h</b>	<b>Laminate</b>	<b>7,785</b>
42431/2SA	60"l x 42"w x 27"-53"h	Veneer	8,910
<b>42431/5SA</b>	<b>60"l x 42"w x 27"-53"h</b>	<b>Laminate</b>	<b>8,070</b>
42432/2SA	60"l x 48"w x 27"-53"h	Veneer	9,280
<b>42432/5SA</b>	<b>60"l x 48"w x 27"-53"h</b>	<b>Laminate</b>	<b>8,375</b>
42433/2SA	60"l x 54"w x 27"-53"h	Veneer	9,685
<b>42433/5SA</b>	<b>60"l x 54"w x 27"-53"h</b>	<b>Laminate</b>	<b>8,730</b>
42434/2SA	72"l x 36"w x 27"-53"h	Veneer	9,175
<b>42434/5SA</b>	<b>72"l x 36"w x 27"-53"h</b>	<b>Laminate</b>	<b>8,290</b>
42435/2SA	72"l x 42"w x 27"-53"h	Veneer	9,545
<b>42435/5SA</b>	<b>72"l x 42"w x 27"-53"h</b>	<b>Laminate</b>	<b>8,610</b>
42436/2SA	72"l x 48"w x 27"-53"h	Veneer	9,945
<b>42436/5SA</b>	<b>72"l x 48"w x 27"-53"h</b>	<b>Laminate</b>	<b>8,950</b>

Connectivity devices are to be ordered separately and cost is not reflected in above pricing. Refer to page 153-165 for more information.

TV is not included in price. Refer to page 89 for optional panel price.

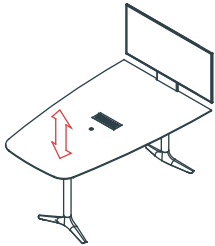
Flat panel monitors and mounting brackets to be supplied by customer and are not included in above pricing.

Refer to page 89 for available accessories for Gateway free standing height adjustable media table.

# GATEWAY™ FREESTANDING HEIGHT ADJUSTABLE MEDIA TABLES VISTA SHAPE TOP

— US ONLY —

Model Number	Table Dimensions	Top Finish	List Price
42430/2VA	60"l x (26"-36")w x 27"-53"h	Veneer	8,710
<b>42430/5VA</b>	<b>60"l x (26"-36")w x 27"-53"h</b>	<b>Laminate</b>	<b>7,900</b>
42431/2VA	60"l x (27½"-42")w x 27"-53"h	Veneer	9,065
<b>42431/5VA</b>	<b>60"l x (27½"-42")w x 27"-53"h</b>	<b>Laminate</b>	<b>8,200</b>
42432/2VA	60"l x (32"-48")w x 27"-53"h	Veneer	9,425
<b>42432/5VA</b>	<b>60"l x (32"-48")w x 27"-53"h</b>	<b>Laminate</b>	<b>8,505</b>
42433/2VA	60"l x (32"-54")w x 27"-53"h	Veneer	9,845
<b>42433/5VA</b>	<b>60"l x (32"-54")w x 27"-53"h</b>	<b>Laminate</b>	<b>8,865</b>
42434/2VA	72"l x (26"-36")w x 27"-53"h	Veneer	9,320
<b>42434/5VA</b>	<b>72"l x (26"-36")w x 27"-53"h</b>	<b>Laminate</b>	<b>8,425</b>
42435/2VA	72"l x (27½"-42")w x 27"-53"h	Veneer	9,705
<b>42435/5VA</b>	<b>72"l x (27½"-42")w x 27"-53"h</b>	<b>Laminate</b>	<b>8,745</b>
42436/2VA	72"l x (32"-48")w x 27"-53"h	Veneer	10,120
<b>42436/5VA</b>	<b>72"l x (32"-48")w x 27"-53"h</b>	<b>Laminate</b>	<b>9,090</b>



Connectivity devices are to be ordered separately and cost is not reflected in above pricing. Refer to page 153-165 for more information.

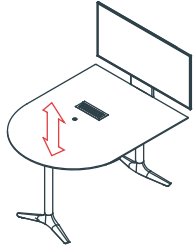
TV is not included in price. Refer to page 89 for optional panel price.

Flat panel monitors and mounting brackets to be supplied by customer and are not included in above pricing.

Refer to page 89 for available accessories for Gateway free standing height adjustable media table.

# GATEWAY™ FREESTANDING HEIGHT ADJUSTABLE MEDIA TABLES D-END TOP

— US ONLY —



Model Number	Table Dimensions	Top Finish	List Price
42430/2DA	60"l x 36"w x 27"-53"h	Veneer	8,895
<b>42430/5DA</b>	<b>60"l x 36"w x 27"-53"h</b>	<b>Laminate</b>	<b>8,060</b>
42431/2DA	60"l x 42"w x 27"-53"h	Veneer	9,260
<b>42431/5DA</b>	<b>60"l x 42"w x 27"-53"h</b>	<b>Laminate</b>	<b>8,365</b>
42432/2DA	60"l x 48"w x 27"-53"h	Veneer	9,640
<b>42432/5DA</b>	<b>60"l x 48"w x 27"-53"h</b>	<b>Laminate</b>	<b>8,680</b>
42433/2DA	60"l x 54"w x 27"-53"h	Veneer	10,070
<b>42433/5DA</b>	<b>60"l x 54"w x 27"-53"h</b>	<b>Laminate</b>	<b>9,065</b>
42434/2DA	72"l x 36"w x 27"-53"h	Veneer	9,530
<b>42434/5DA</b>	<b>72"l x 36"w x 27"-53"h</b>	<b>Laminate</b>	<b>8,595</b>
42435/2DA	72"l x 42"w x 27"-53"h	Veneer	9,925
<b>42435/5DA</b>	<b>72"l x 42"w x 27"-53"h</b>	<b>Laminate</b>	<b>8,935</b>
42436/2DA	72"l x 48"w x 27"-53"h	Veneer	10,355
<b>42436/5DA</b>	<b>72"l x 48"w x 27"-53"h</b>	<b>Laminate</b>	<b>9,295</b>

Connectivity devices are to be ordered separately and cost is not reflected in above pricing. Refer to page 153-165 for more information.

TV is not included in price. Refer to page 89 for optional panel price.

Flat panel monitors and mounting brackets to be supplied by customer and are not included in above pricing.

Refer to page 89 for available accessories for Gateway free standing height adjustable media table.

# GATEWAY™ FREESTANDING HEIGHT ADJUSTABLE MEDIA TABLES ACCESSORIES

— US ONLY —

## Description

### Hinged Door Storage: Opening Under Table

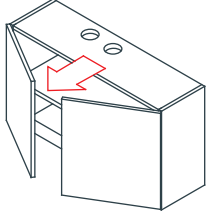


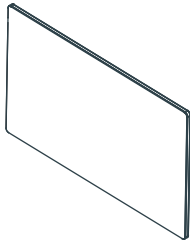
Table Depth	Model Number	Case Dimension	Finish	List Price
42"	42450/2	36" w x 12" d x 22 7/8" h	Veneer	2,200
<b>42"</b>	<b>42450/5</b>	<b>36" w x 12" d x 22 7/8" h</b>	<b>Laminate</b>	<b>1,925</b>
48"	42451/2	42" w x 12" d x 22 7/8" h	Veneer	2,685
<b>48"</b>	<b>42451/5</b>	<b>42" w x 12" d x 22 7/8" h</b>	<b>Laminate</b>	<b>2,360</b>
54"	42452/2	48" w x 12" d x 22 7/8" h	Veneer	3,240
<b>54"</b>	<b>42452/5</b>	<b>48" w x 12" d x 22 7/8" h</b>	<b>Laminate</b>	<b>2,865</b>
60"	42453/2	54" w x 12" d x 22 7/8" h	Veneer	3,900
<b>60"</b>	<b>42453/5</b>	<b>54" w x 12" d x 22 7/8" h</b>	<b>Laminate</b>	<b>3,455</b>

- Storage cases are available in all standard Nienkämper Veneer and P-Lam.
- Case includes 1 removable shelf.
- Wire exits through hole in bottom of case.
- Touch latches are standard
- For options like custom material or finish, face lock, non-standard pulls or custom wire exit, contact Customer Service.

To order a storage base element is simple:

- 1) Pick the Gateway Free Standing Height Adjustable table that suits your requirement from pages 71-73.
- 2) Select the storage element in the finish you would like from above making sure the overall case width is 6" less than your table.

### Upholstered Decorative Panel



Model Number	Case Dimension	Fabric Yrds	List Price				
			COM		Knoll Textiles		
			1	2	3	4	
42454	66" w x 1 5/16" d x 47" h	4	1,465	1,930	2,245	2,620	2,985

- Decorative panels are used when the table is in a position where the back of the TV may be seen.
- Panels are available in one size.
- Standard Knoll Textiles fabric is standard with an silver anodized trim.
- Most COM fabrics can be used, contact customer service for details.

### VOX® CABLE CONDUIT

#### Vox® Expandable Cable Conduit



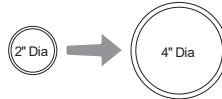
#### Expandable Cable Conduit for Standard Height

55024-B	Black	1,225
55024-S	Silver	1,225
55024-C	Clear	1,225

#### Expandable Cable Conduit for Standing Height

55024-BXL	Black	1,300
55024-SXL	Silver	1,300
55024-CXL	Clear	1,300

Note: Expandable Cable Conduit for height adjustable tables are 42" long.



The Vox® Expandable Cable Conduit is made of woven, flexible plastic wire. Its unique properties allow it to expand and contract to allow for different cable capacities.

A "U" bracket at the top attaches to the support rail. An 8" diameter counter weight is incorporated at the base which can be positioned to accommodate core drills or receptacle positions. Inside hole diameter is 3.5".

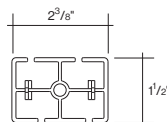
Cable capacity range is from two inches to four inches.

Shipped with extra length, the Vox expandable cable conduit can easily be shortened on site if required.

#### Vox® Linked Cable Conduit



55025-B	Black	1,335
55025-S	Silver	1,335
55025-C	Clear	1,335



The Vox® Linked Cable Conduit is comprised of a series of plastic elements that are divided into 4 cavities.

As an assembly it bends in a single direction but may also be rotated about its top mount.

A "U" bracket at the top attaches to the support rail.

An 8" diameter counter weight is incorporated at the base which can be positioned to accommodate core drills or receptacle positions. Inside hole diameter is 3.5".

- 2" long segments can be removed to desired length.
- Wire capacity: eighteen 16 gauge cables.

# TERMS AND CONDITIONS OF SALE

---

## PRICES

All prices are list prices, freight included, blanket-wrapped, dock delivered, from the manufacturing source to any location in the contiguous United States.

Brokerage is paid by Nienkämper for product shipped to the United States.

Due to existing conditions in regard to cost of labor and materials, we reserve the right to change prices without notice.

## TERMS

Net 30 days from date of invoice to accredited buyers. Two per cent (2%) interest charged monthly on overdue accounts. Deposit of 50% is required with order. Terms will be established upon credit evaluation. Due to delays in processing references, first orders may be treated as C.B.D. orders.

## ORDER CONFIRMATION

Orders are accepted upon issuance of our order confirmation and are subject to the terms set forth therein; notwithstanding any variance from the terms of the buyer's order form.

Nienkämper is not liable for any delay or failure to deliver caused by labor or transportation difficulties, accidents, acts of God, failure of sources of supply, or other causes beyond our control, and changes will affect the delivery date.

## CHANGE OF ORDERS OR CANCELLATIONS

Changes or cancellations are subject to our ability to conform. A charge will be levied against cancelled or changed orders based on costs already incurred by Nienkämper. All changes must be in writing and submitted on a revised purchase order. Changes will affect the delivery date.

## STORAGE

If goods cannot be accepted when ready, we may transfer them to storage (which is to be deemed as delivery for invoice purposes). The customer accepts risks and will be charged at prevailing rates.

## FREIGHT

Prices include freight charges, blanket-wrapped, dock delivered, from the manufacturing source to any location in the contiguous United States. Packing and/or crating are available, if required, upcharges apply.

## CLAIMS

All furniture is given to the carrier and signed for in good condition. It is the responsibility of the receiver to sign for the goods in the presence of the carrier and note the condition in which they are received. Freight claims should be filed with the carrier.

## WARRANTY

There are no express or implied warranties, conditions and obligations of the manufacturer, whether statutory or otherwise that extend beyond the description on the face hereof. Our furniture is made to the highest standard and is warranted free from defects of material and workmanship for five years from the date of delivery. During the warranty period we will repair or replace such merchandise as shall prove to be defective, during normal usage in accordance with manufacturer's specifications. The manufacturer shall not be liable for defect wholly attributable to normal manufacturing process. Replacement or repair of the Product shall be the sole remedy of the Customer, and the manufacturer shall not be liable for any direct, indirect, incidental, or consequential loss or damage suffered by the Customer by reason of any defect in workmanship or manufacture of the Product or inability to use the Product. Moreover, this warranty does not cover accidental damage, abuse, alteration, ordinary wear and tear of Goods, negligence and misuse nor variations over which we have no control such as heat or humidity or damage to which the Goods are connected that is not attributable to the failure of the goods themselves. This warranty is null and void when the product is installed with hardware other than that supplied and/or when installed differently than recommended in the installation guide. Modification to the product or hardware may result in failure of the product and cause damage and/or injury.

## WOOD FINISHES

Nienkämper offers a wide variety of standard light finishes on cherry, mahogany and figured anagré wood veneers, and a clear natural finish on figured anagré, figured sycamore, maple, bird's eye maple and curly maple.

Light finishes do not mask the grain and other characteristics of each wood species. It is important to understand that pieces of the same type of wood will not look identical when a light finish is used. The appearance of the finish will also depend on the natural color of the veneer. Cherry darkens over time as the wood ages. Pin knots and gum pockets are inherent traits.

Wood is a naturally variable raw material; its variances are not within the furniture manufacturer's control and are therefore not considered defects under this warranty.