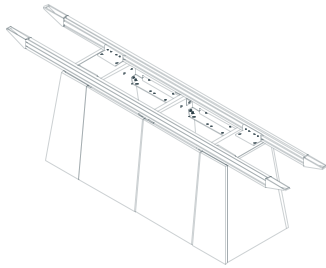


SUMMIT BASE



CONFERENCE TABLE INSTALLATION GUIDE

Tel8006689318
Tel4162985700
Fax4162989535
mail@nienkamper.com
www.nienkamper.com

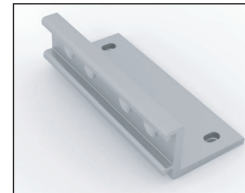
HARDWARE PARTS LIST



ALLEN KEYS
Small 4mm
For hex socket assembly, to join rails together.
For installing bases to rails.
For installing mounting plate to top.
Large 5mm
For hex assembly, to join rail together.



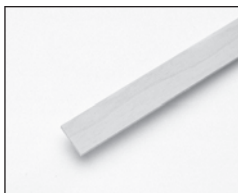
TIGHT JOINT FASTENERS
3 piece assembly plus 1 tightening rod



END BASE BRACKET
6" x 1 3/4" x 2 1/2"
Joins End base to rail.



JOINER HEX SOCKET BOLT ASSEMBLY
4mm & 5mm - 1/4"-20 x 2" Joiner bolt and joiner nut.
Joins rails together.
Joins Mid and End bases together.



WOODEN SPLINE
1/8" x 7/8" x various lengths.
Insert into edge of multiple segment tops.

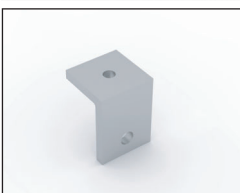


JOINER HEX SOCKET BOLT
4mm - 1/4"-20 x 7/8"
Joins mounting plate to top.
Joins "L" brackets to bases.

4mm - 1/4"-20 x 9/16"
Joins rail t-slot nut to base brackets.



MOUNTING PLATE
1/4" x 3" x 4".
Fixes rail to top.

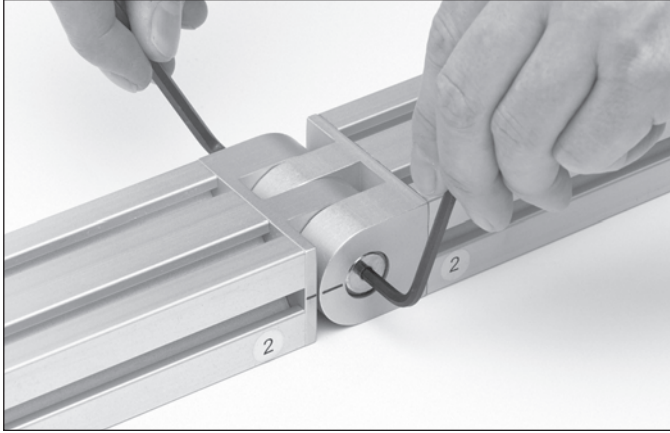


"L" Bracket
1" x 1"
Joins Mid bases to rail.



WIRE MANAGEMENT "U" CLIPS
Gray ABS plastic.
Used to secure wires to support rail.

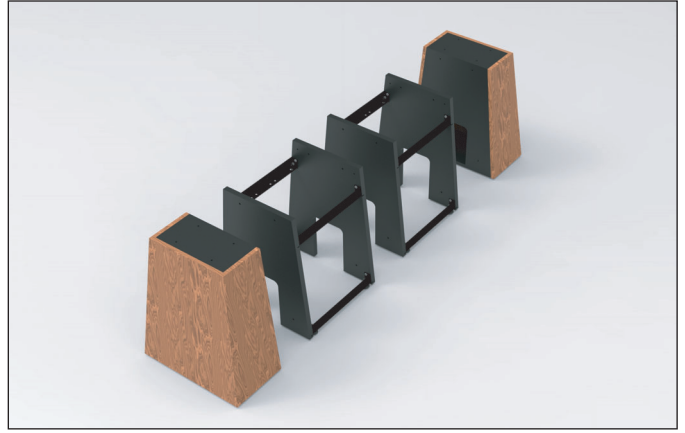
ASSEMBLING SUPPORT RAILS



1

- Large conference tables incorporate support rails in multiple segments.
- Position and assemble connecting joints as shown.
- Matching joints are number coded (stamped into underside of top).
- Required hardware: 1/4"-20 x 2" joiner hex bolt & joiner nut assembly.

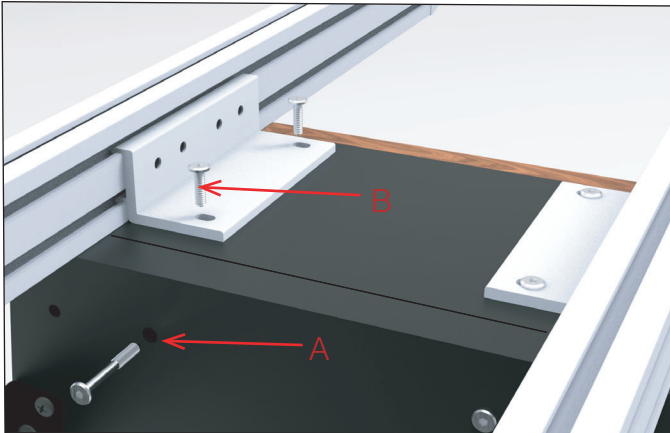
POSITIONING BASE ELEMENTS



2

- Align End and Mid bases in approximate location of install.

JOINING RAILS TO END BASES

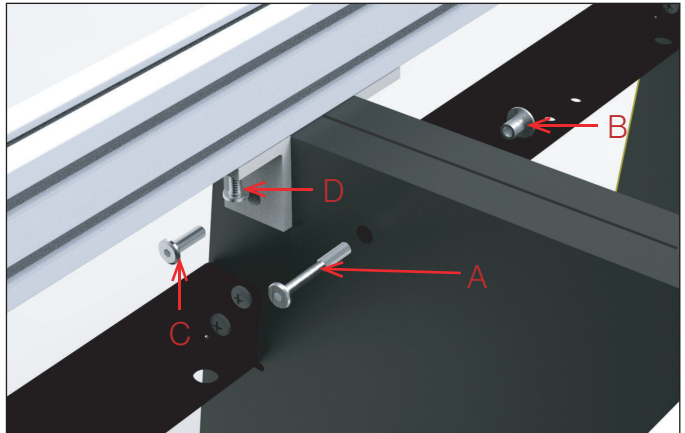


3

- Join Mid base and End base with 1/4"-20 x 2" joiner hex bolt in 4 locations. (A)
- Join end base bracket to End base with 1/4"-20 x 7/8" (B) joiner hex bolts, keeping connection loose.
- Align grooves in rail with rail bracket.

Note: Position rail with pre-installed t-slot nuts on bottom side.

JOINING RAILS TO MID BASES



4

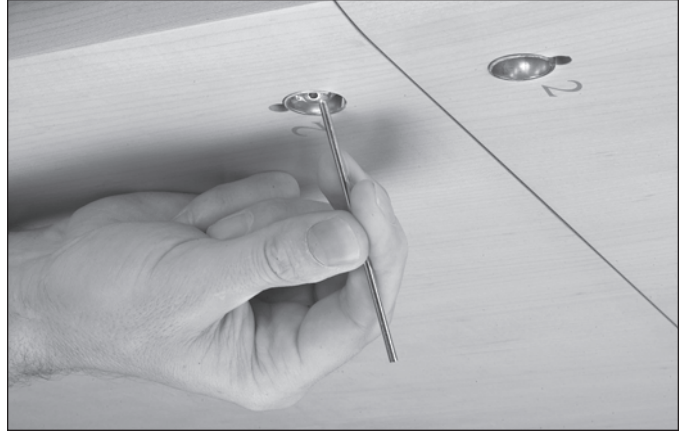
- Join Mid bases together with 1/4"-20 x 2" joiner hex bolts (A) and joiner nuts (B) in 4 locations.
- Join "L" brackets to base with 1/4"-20 x 7/8" (C) joiner hex bolt.
- Align pre-installed t-slot in rail with "L" bracket hole and secure with 1/4"-20 x 9/16" joiner hex bolt (D).
- Tighten 1/4"-20 x 7/8" joiner hex bolts (B) from step 3 to lock bases and rails together.

JOINING MULTI-PIECE TOPS



5

- Position multiple section tops with matching identification numbers onto rails
- Insert wooden spline into the groove at seam.
- Insert ball fitting, align with tight joint bolt.
- Start the thread,



6

- Slide sides together, align top.
- Insert tight joint collar.
- Tighten ball fitting, hand tight.

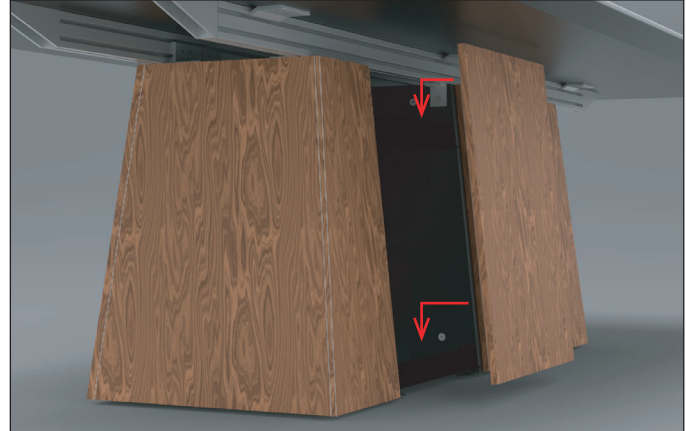
ATTACHING RAIL TO TOP



7

- Insert the mounting plate into the top groove of the rail.
- Slide the plate to align threaded inserts of top with holes in mounting plate.
- Required hardware: 1/4"-20 x 7/8" joiner hex bolt.

HANGING ACCESS PANEL



8

- Hang access panels by sliding panels down to engage z-clips on back of panel with cross brace in base.