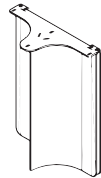




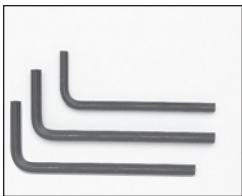
PLEAT™ COLLECTION

Tel8006689318
 Tel4162985700
 Fax4162989535
 mail@nienkamper.com
 www.nienkamper.com



CONFERENCE TABLE INSTALLATION GUIDE

HARDWARE PARTS LIST



ALLEN KEYS
 4mm
 For hex socket assembly, to join rails together.
 5mm - For hex assembly, to join rail together.
 1/4" - For mounting rail to base



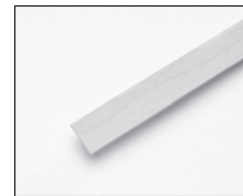
JOINER HEX SOCKET BOLT ASSEMBLY
 4mm & 5mm - 1/4"-20 x 2" Joiner bolt and joiner nut.
 Joins rails together.
 Joins Mid and End bases together.



PAN HEAD MACHINE BOLT
 1/4"-20 x 1"
 Joins mounting plate to top.
 Joins rail bracket to top.



TIGHT JOINT FASTENERS
 3 piece assembly plus 1 tightening rod



WOODEN SPLINE
 1/8" x 7/8" x various lengths.
 Insert into edge of multiple segment tops.

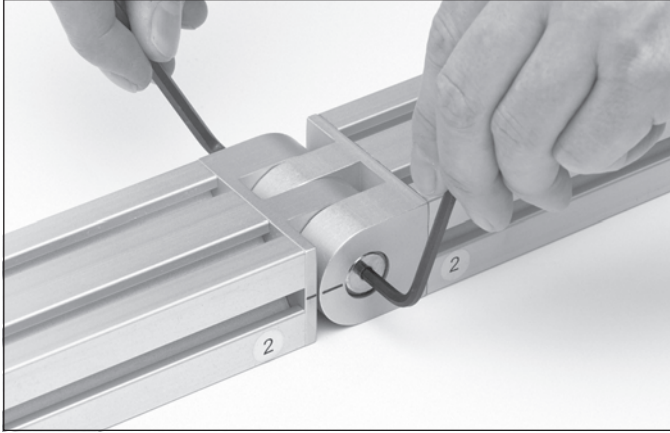


MOUNTING PLATE
 1/4" x 3" x 4".
 Fixes rail to top.



WIRE MANAGEMENT "U" CLIPS
 Grey ABS plastic.
 Used to secure wires to support rail.

ASSEMBLING SUPPORT RAILS



1

- Large conference tables incorporate support rails in multiple segments.
- Position and assemble connecting joints as shown.
- Matching joints are number coded (stamped into underside of top).
- Required hardware: 1/4"-20 x 2" joiner hex bolt & joiner nut assembly.

JOIN RAIL TO BASE

2



- Insert gripper fitting on ends of rail into grooves of base brackets.
- Position rails out to ends of base bracket and tighten gripper bolt from underside.

ASSEMBLED BASE AND RAIL

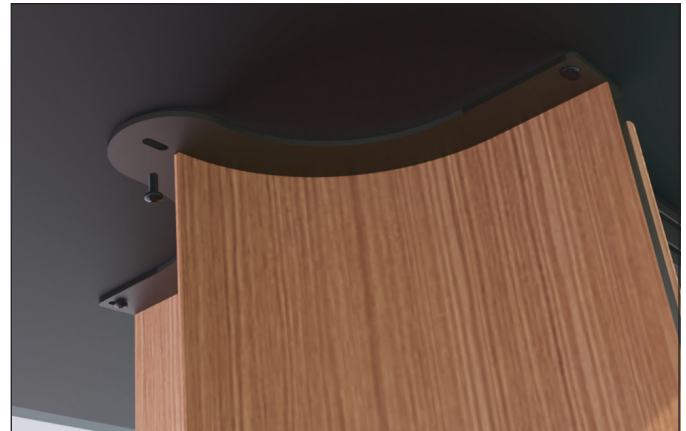


3

- Assembled base and rail structure.

JOINING BASE TO TOP

4



- Place top onto base assembly, roughly aligning base through holes with pre-installed inserts in underside of top.
- Attach base to top with 1/4"-20 x 1" pan head machine bolt.

JOINING MULTIPLE PIECE TOPS



5

- Position multiple section tops with matching identification numbers onto rails
- Insert wooden spline into the groove at seam.
- Insert ball fitting, align with tight joint bolt.
- Start the thread,



6

- Slide sides together, align top.
- Insert tight joint collar.
- Tighten ball fitting, hand tight.

ATTACHING RAIL TO TOP



7

- Insert the mounting plate into the top groove of the rail.
- Slide the plate to align threaded inserts of top with holes in mounting plate.
- Required hardware: 1/4"-20 x 7/8" joiner hex bolt.

REMOVABLE BASE PANEL



8

- To remove / install base access panel, lift up and tilt bottom outward.

Note:
For installations that include wire management, power, or connectivity components, please refer to the applicable product-specific installation guide for additional instructions.