

# Focus Collaborative Office



design: Nienkämper

## Architectural Continuity Across the Workplace

Focus brings the collection's refined design language to shared workspaces, creating an environment that supports focused, day-to-day collaboration. Integrated storage, architectural surfaces, and acoustic elements help define personal space while maintaining a clean, cohesive aesthetic. Designed for leadership teams and high-performance offices, Focus balances productivity, comfort, and visual continuity across the workplace.



### DETAILS



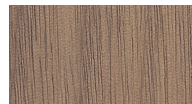
**Adjustable Height**  
Height-adjustable system utilizes premium components from a leading producer, paired with a Bluetooth® enabled programmable control system.



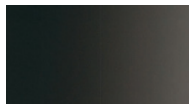
**Elements**  
Integrated Storage Element  
Task Table with Cruciform Base

### NEOCON 2026

#### Finish Palette



F-31FM  
Autumn Walnut Veneer  
Flat Cut Book Match  
Matte Finish



PC-04  
Dark Bronze  
Powder Coat Paint



RL-04  
Sand  
Finger Print Resistant  
Plastic Laminate



Luum  
Graph - Speck -  
Earthworks  
4106-05  
Tack Panel Fabric

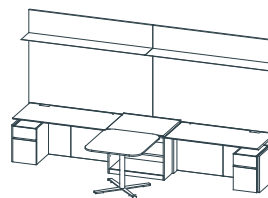
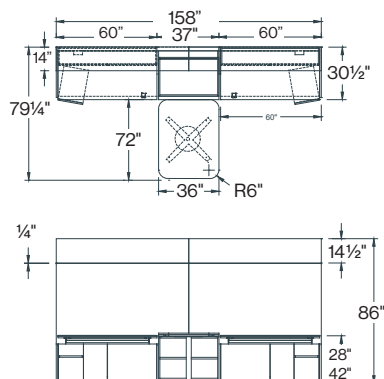
#### Integrated Power:



3 port Simple Forum

### Technical Drawings

#### Plan View



### SPECIFICATIONS:

#### Top Finishes:

All standard Nienkämper veneer and plastic laminates including finger print resistant.

#### Stains & Top Coats:

All standard Nienkämper stain colors and clear finishes (matte, 5, 10, 35, 45 degree sheen)

**Foot Print:** 158"x79 1/2"

**Height Adj Desk:** 59"x29"x28"-42"H

#### Project Table:

48"x36"x29" soft rectangle shape

**Soft Corners:** 6"Rad

**Mobile Pedestals:** 1B/1F -15"x20"x23 1/4"

#### Fixed Pedestal:

36"x30"x29"H - Open with shelf

#### Fixed Pedestal Options:

Box / File fixed available with collection

#### Closet:

Available within collection

#### Locks:

Available within collection

#### Floating Shelf:

79"x14 1/2"x1/4" (QTY2) metal w/ flush LED Light

#### Overhead Storage Opt:

Open and enclosed possible, doors, open, sliding panels

**Tack Panel:** 158"x62 1/2" Fabric

#### Tack Panel Options:

Full fabric, Split material veneer & fabric (side by side or below and above shelf), Glass white board

**Base Style:** Cruciform Base

**Lighting:** LED

#### Pulls:

Integrated Scallop, Touch and all std pull styles

#### Cable Management:

Concealed in cases with access doors and panels

#### Seating Element:

Available within collection

#### Customization:

Top lengths & Configurations

### SPECIFIER SUPPORT:

#### Lead Time

Standard 10 weeks / Custom 12 weeks

#### Warranty

5 Years

#### Power

UL, cUL & CSA Listed Components,

#### Sustainability

FSC® Options Available | LEED Contribution

#### Delivery

Protective Blanket-Wrap Shipping

#### Made in

Canada