

# Focus Private Office



design: Nienkämper

## Architectural Continuity Across the Workplace

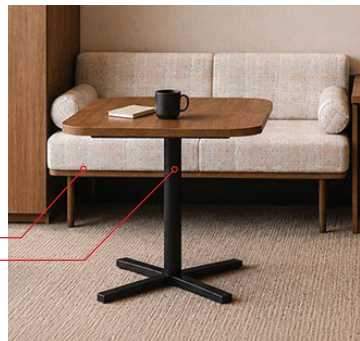
Focus brings together privacy, comfort, and functionality in a refined executive workspace designed for how people work today. Integrated storage, warm material finishes, and thoughtful details create a calm, organized environment that supports focused work, casual conversation, and everyday productivity, all within a cohesive architectural design language.



### DETAILS



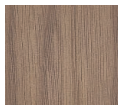
**Adjustable Height**  
Height-adjustable system utilizes premium components from a leading producer, paired with a Bluetooth® enabled programmable control system.



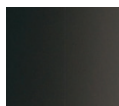
**Elements**  
Integrated Lounge Element  
Task Table with Cruciform Base

### NEOCON 2026

#### Finish Palette:



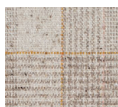
F-31FM  
Autumn Walnut Veneer Flat Cut Book Match Matte Finish



PC-04  
Dark Bronze Powder Coat Paint



Leather Gaucho Clay Arm Bolster *not shown in renderings*



Luum Melange Check - Soda Fired 4100-03 Seating Fabric



Luum Graviton - Half Life 1034-06 Tack Panel

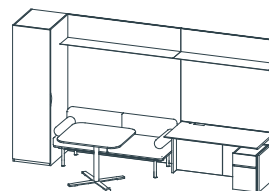
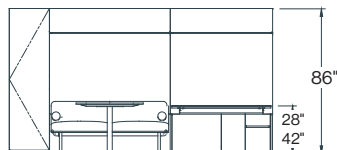
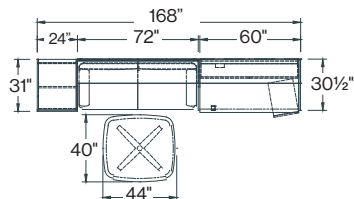
#### Integrated Power:



3 port Simple Forum

### Technical Drawings

Plan View



### SPECIFICATIONS:

#### Top Finishes:

All standard Nienkämper veneer and plastic laminates including finger print resistant.

#### Stains & Top Coats:

All standard Nienkämper stain colors and clear finishes (matte, 5, 10, 35, 45 degree sheen)

**Foot Print:** 157"x73"

**Height Adj Desk:** 60"x30"x28"-42"H

**Project Table:** 40"x44"x29" Bellied Rectangle Shape

**Project Table Shape Options:** Soft Rectangle, Soft Square Bellied Rectangle, Bellied Square, Round

**Soft Corners:** 6"Rad

**Mobile Pedestals:** 1B/1F - 15"x20"x23 1/4"

**Fixed Pedestals:** 15", 18", 24", 30", 36"

**Closet:** 24"x31"x86"H

**Closet Options:** Auto on LED closet light, hat shelf and mirror

**Locks:** Available within collection

#### Floating Shelf:

72"x14 1/2"x1/4" | 61"x14 1/2"x1/4" metal w/ flush LED Light

#### Overhead Storage Opt:

Open and enclosed possible, doors, open, sliding panels

**Tack Panel:** 133"x62 1/2" Fabric

**Tack Panel Options:** Full fabric, Split material veneer & fabric (side by side or below and above shelf), Glass white board

**Base Style:** Cruciform Base

**Lighting:** LED

#### Pulls:

Integrated Scallop, Touch and all std pull styles

#### Cable Management:

Through Bases and concealed in cases with access panel

#### Seating Element:

70"x28"x31"H Options - full plinth base with under storage

#### Customization:

Top lengths & Configurations

### SPECIFIER SUPPORT:

#### Lead Time

Standard 10 weeks / Custom 12 weeks

#### Warranty

5 Years

#### Power

UL, cUL & CSA Listed Components,

#### Sustainability

FSC® Options Available | LEED Contribution

#### Delivery

Protective Blanket-Wrap Shipping

#### Made in

Canada