

Focus Private Office



design: Nienkämper

Architectural Continuity Across the Workplace

Focus brings together privacy, comfort, and functionality in a refined executive workspace designed for how people work today. Integrated storage, warm material finishes, and thoughtful details create a calm, organized environment that supports focused work, casual conversation, and everyday productivity, all within a cohesive architectural design language.



DETAILS



Adjustable Height
Height-adjustable system utilizes premium components from a leading producer, paired with a Bluetooth® enabled programmable control system.



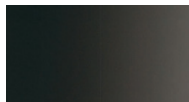
Elements
Integrated Lounge Element
Task Table with Cruciform Base

NEOCON 2026

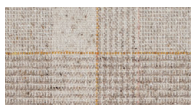
Finish Palette:



F-32FM
Cotton White Oak Veneer
Flat Cut Book Match
Matte Finish



PC-04
Dark Bronze
Powder Coat Paint



Luum
Melange Check - Soda
Fired 4100-03
Seating Fabric



Luum
Graviton - Half Life
1034-06
Tack Panel Fabric

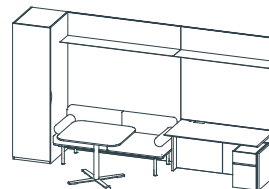
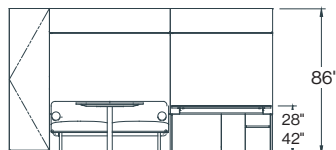
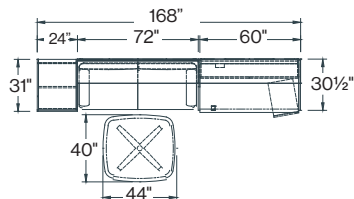
Integrated Power:



3 port Simple Forum

Technical Drawings

Plan View



SPECIFICATIONS:

Top Finishes:

All standard Nienkämper veneer and plastic laminates including finger print resistant.

Stains & Top Coats:

All standard Nienkämper stain colors and clear finishes (matte, 5, 10, 35, 45 degree sheen)

Foot Print: 157"x73"

Height Adj Desk: 60"x30"x28"-42"H

Project Table:
40"x44"x29" Bellied Rectangle Shape

Project Table Shape Options:
Soft Rectangle, Soft Square Bellied Rectangle, Bellied Square, Round

Soft Corners: 6"Rad

Mobile Pedestals: 1B/1F - 15"x20"x23 1/4"

Fixed Pedestals: 15", 18", 24", 30", 36"

Closet: 24"x31"x86"H

Closet Options:
Auto on LED closet light, hat shelf and mirror

Locks: Available within collection

Floating Shelf:

72"x14 1/2"x1/4" | 61"x14 1/2"x1/4" metal w/ flush LED Light

Overhead Storage Opt:

Open and enclosed possible, doors, open, sliding panels

Tack Panel: 133"x62 1/2" Fabric

Tack Panel Options:
Full fabric, Split material veneer & fabric (side by side or below and above shelf), Glass white board

Base Style: Cruciform Base

Lighting: LED

Pulls:

Integrated Scallop, Touch and all std pull styles

Cable Management:

Through Bases and concealed in cases with access panel

Seating Element:

70"x28"x31"H Options -full plinth base with under storage

Customization:

Top lengths & Configurations

SPECIFIER SUPPORT:

Lead Time

Standard 10 weeks / Custom 12 weeks

Warranty

5 Years

Power

UL, cUL & CSA Listed Components,

Sustainability

FSC® Options Available | LEED Contribution

Delivery

Protective Blanket-Wrap Shipping

Made in

Canada