

Vox® Conference - Tambour Base



design: Nienkämper

Architectural detailing with integrated functionality

The Vox® Tambour base brings architectural texture and sculptural depth to the Vox® Collection. Defined by its rhythmic tambour-inspired form, the base introduces warmth, dimension, and refined detailing while maintaining a clean, unified presence. Integrated power and data capabilities, durable construction, and flexible configurations support collaborative environments where craftsmanship and functionality are equally important.



BASE STYLE OPTIONS



Square



Racetrack



Racetrack - Smooth



Filleted Rectangle



Filleted Rectangle - Smooth

DETAILS

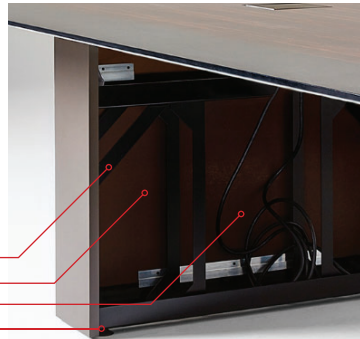


Refined Vox® Power Drawer

Thinned Overall Profile
1/4" Reveal Detail (Metal Accent Available)
Re-imagined Drawer Front
Visual Unity Between Stone, Glass, Veneer and Laminate Tops

Base Construction

- Steel Structural Struts
- Large Wiring Capacity
- Dual Lift-Off Access Panels
- Large Leveling Capability



NEOCON 2026

Finish Palette



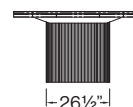
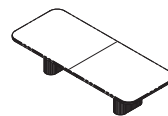
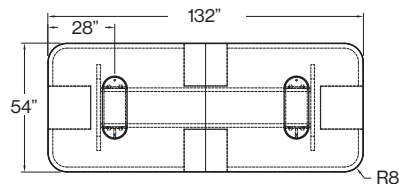
Natural Stone
Ocean Silver Travertine
Honed



Umbra Gray
RAL 7022 Paint
Bases, rails, subtop & Power Drawer

Technical Drawings

Plan View



SPECIFICATIONS:

Top Finishes:

All standard Nienkämper veneer and plastic laminates including finger print resistant.

Stains & Top Coats:

All standard Nienkämper stain colors and clear finishes (matte, 5, 10, 35, 45 degree sheen)

Top Sizes:

72"x36" - 240"x84"

Top Shapes:

Rectangle, Boat, Closed Vista with and without radius corner, Super Ellipse, Racetrack, Round, Square

Soft Corners:

8" Rad

Base Style:

Fixed height

Base Shapes:

Racetrack, Round, Filleted Square

Base Construction:

MDF / Veneer Tambour cladding over plywood frame with metal struts

Height Adjustable:

No

Cable Thru Base:

Yes

Misc. Base Details:

1/2" leveling standard,

Base/ Table Heights:

29" standard top / 30" with Power Drawer

Base Finishes:

Painted and select veneers (Oak & Walnut)

Edges:

All standard and premium edge profiles

Connectivity:

In surface: M-Series, Double Sided, Simple Forums *NO FORUMS CAN BE PLACED OVER BASE*

Under Surface: Simple Forums

Specialty: Power Trough, Power Edge, Power Drawer

Cable Management:

Wire pan, Cable conduits, wire clips

All Top Materials:

Natural & Engineered Stone, Glass

Customization:

Top Sizes and Shapes

SPECIFIER SUPPORT:

Lead Time

Standard 10 weeks / Custom 12 weeks

Warranty

5 Years

Test Standards

BIFMA Compliant - Pending

Power

UL & cUL Listed Components

Sustainability

GREENGUARD Certified | FSC® Options Available | LEED Contribution

Made in

Canada