

EFIRD'S DEPARTMENT STORE

208 FAYETTEVILLE STREET

FOR LEASE

OFFICE SPACE

DOWNTOWN RALEIGH



LOWER LEVEL: 2,835 RSF

- Large lower level retail space on Fayetteville Street
- Full rehabilitation including exposure of the original granite storefront
- Spacious suite with an open floor plan and high ceilings
- Downtown location, steps away from all of Raleigh's urban amenities

FOR LEASING AND AVAILABILITY

leasing@empire1792.com | 919-834-8350
Empire Brokerage Services, Inc.



EFIRD'S DEPARTMENT STORE

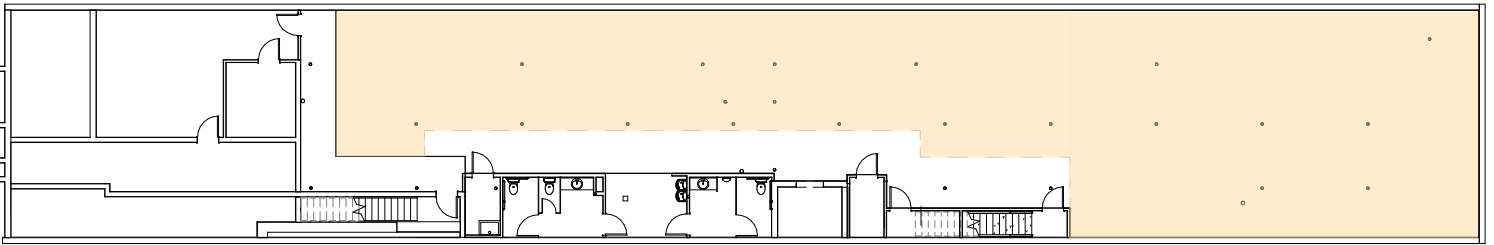
208 FAYETTEVILLE STREET

FOR LEASE

OFFICE SPACE

DOWNTOWN RALEIGH

■ Exclusive Premises



FOR LEASING AND AVAILABILITY

leasing@empire1792.com | 919-834-8350
Empire Brokerage Services, Inc.



OFFICE SPACE **DOWNTOWN RALEIGH**



FOR LEASING AND AVAILABILITY

leasing@empire1792.com | 919-834-8350
Empire Brokerage Services, Inc.



OFFICE SPACE **DOWNTOWN RALEIGH**



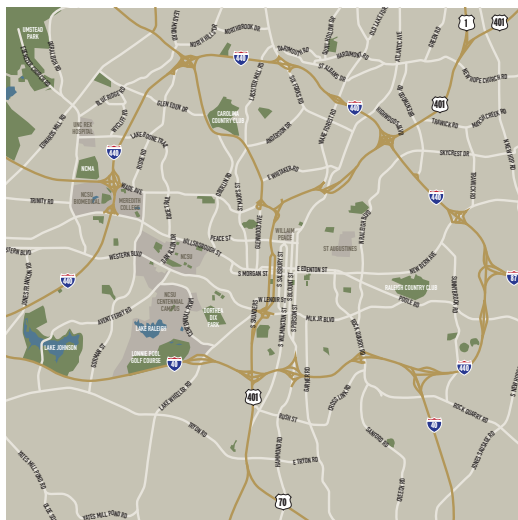
FOR LEASING AND AVAILABILITY

leasing@empire1792.com | 919-834-8350
Empire Brokerage Services, Inc.



OFFICE SPACE

DOWNTOWN RALEIGH



LOCATION

- Centralized, downtown location on Fayetteville Street near the City Plaza, Nash Square, Moore Square, and NC State Capitol
- Three parking decks within 1 block radius
- Steps from restaurant and entertainment amenities

FOR LEASING AND AVAILABILITY

leasing@empire1792.com | 919-834-8350
Empire Brokerage Services, Inc.

