



CONTRACT GROWING

INTEGRATED. MODERN. TUNNEL VENTILATION.



cb
GROUP

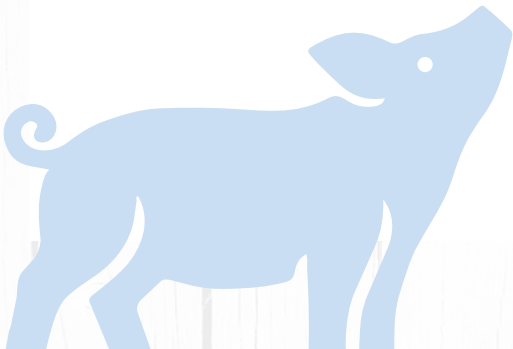
The time is *now*

**...reshaping the future
of Jamaica's table egg
and pork industries.**

Building on the proven success of contract growing and tunnel-ventilated housing that transformed the broiler industry post-Hurricane Gilbert, CB Group is investing in modern infrastructure, advanced systems, and long-term partnerships to strengthen local pork production.



CB Group is introducing Integrated Contract Growing for finishing pigs, designed to deliver efficiency, biosecurity, consistency, and predictable returns—while creating scalable agricultural businesses for Jamaican investors.



How the Contract Growing Model Works

Contract Growing is a proven agricultural partnership where production and risk are shared between CB Group and the Grower.

CB Group provides major production inputs and market execution, ensuring consistency and quality:

- 8-week-old finishing piglets (barrows)
- All feed requirements
- Vaccines and prescribed medications
- Veterinary oversight and weekly technical visits
- Performance monitoring

- Collection and haulage of pigs to processing plant

Growers invest in land and infrastructure and provide management and labour to raise the animals. You focus on operational excellence.



4

All In – All Out Production Cycle

Contract term:

16-18 weeks

- 14-16 weeks growing period from delivery to haulage of animals
- 2 weeks for cleaning and sanitization

Turns per year:

2.75



Grower Requirements

Land & Location

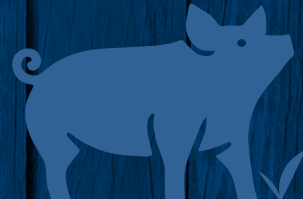
- Approved parishes: Clarendon, St. Catherine and parts of St. Ann and Manchester



- Minimum 20 acres with registered title
- Mostly flat, well-drained land
- Reliable access to potable water and electricity
- Good road access for livestock and feed trucks
- Isolated location, minimum 1 mile from residential or commercial areas

Infrastructure & Facilities

- No existing farming facilities required; all facilities are purpose-built to CB Group's proven design and operating standards
- Minimum one (1) 40 ft x 200 ft tunnel ventilated house
 - CB Group oversees supplier selection, procurement and installation of housing
- Capacity: 1,000 finishing pigs
- Mandatory biosecurity systems, including perimeter fencing, controlled entry, and sanitation protocols



Environment, Sustainability & Governance

Growers must demonstrate strong environmental and regulatory compliance:

- Registration with RADA
- Compliance with NEPA requirements and approvals
- Public Health inspection and certification
- No community or land-use conflicts
- Odour, noise, and waste management capability
- Proper carcass disposal systems
- Strict biosecurity, pest control, and farm access protocols
- Adherence to all CB Group operating guidelines



Labour & Day-to-Day Operations

- Typically 1-2 trained workers
- Animal husbandry not required; all training provided
- Daily feeding, watering, medicating, and monitoring
- Maintenance of clean, controlled housing
- Full clean-down and preparation between cycles
- Accurate daily record-keeping
- 24-hour access for CB Group technical teams



Capital, Financing Readiness & Returns



Benefits of Contracting Growing



Shared Risk

In the event of natural disasters or major disruptions, your exposure is limited to farm infrastructure. CB Group carries the risk associated with livestock, significantly reducing your downside.



Simplified Operations

CB Group manages animals, feed, veterinary care, logistics, and market access—allowing you to focus on farm performance rather than administrative or commercial complexity.



Steady Cash Flow

Operate with confidence knowing there is a guaranteed, consistent and a predictable payment structure. CB Group absorbs feed cost volatility, animal pricing risk, and market fluctuations.



Proven System

This proven contract growing model helped transform Jamaica's broiler industry into a regional leader. In over 40 years, no CB Group contract grower has ever defaulted on a loan.



Own Your Own Business

Operate your own farm as an independent entrepreneur, backed by a proven partner and system.



Legacy & Retirement

Build a long-term asset that supports generational transfer, financial security, and retirement planning.

Frequently Asked Questions

Q: Do I need prior farming experience?

A: No. Success in Contract Growing depends on strong management, discipline, and full engagement in the operation. CB Group trains all Growers in best-in-class animal husbandry and farm management practices.

Q: Can I start without a farm?

A: Yes. You do not need a farm, but must have access to land and financing.

Q: Who owns the animals?

A: CBG retains ownership of all animals.

Q: Who is responsible for the utilities?

A: Growers are responsible for all utilities including water and electricity.

Q: What happens if performance targets are not met?

A: CBG works with Growers to identify issues and provide technical support. Persistent underperformance may result in corrective measures or contract review.

Q: Is Contract Growing suitable as a full-time business?

A: Yes. Contract Growing requires consistent, hands-on management to achieve optimal returns and should be approached as a small to medium-sized enterprise deserving of full focus and commitment.

Q: If awarded a CB Group Grower Contract for Pigs, can I operate other livestock enterprises and on the same property?

A: No. For biosecurity and effective management, Growers are required to focus exclusively on one livestock enterprise. This ensures the highest health standards, operational efficiency and long-term success.

GET STARTED

For more information or to express interest:



*The time
is now*

 mycbgroup.com/TheTimesNow

  @mycbgroup