

1419

Authorized
Distributor

CONNECT

CARSON® Spec Grade

COVER

Style:	Flush
Material:	HDPE
Model:	14" x 19"
Weight:	3 lbs
Std. Fasteners:	3/8" Hex Bolt
Options:	Logos and Special Markings
Surface:	Skid Resistant & Marked*
Performance:	Pedestrian, ASTM C857, WUC 3.6

Cover comes standard with permanent markings for manufacturer and model size.

BODY

Material:	HDPE
Model:	14" x 19"
Weight:	6" Depth: 5 lbs 12" Depth: 7 lbs 24" Depth: 15 lbs
Wall Type:	Flared
Mouseholes:	2
Performance:	Pedestrian, ASTM C857, WUC 3.6

EXTENSION

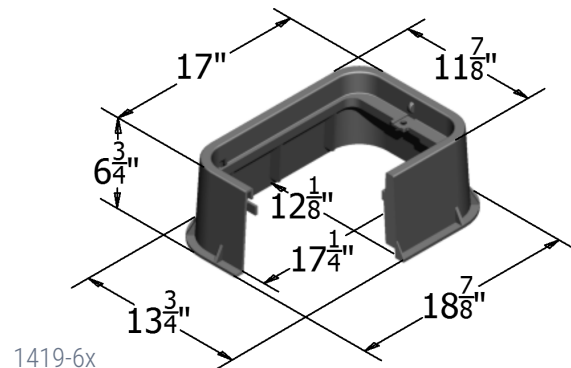
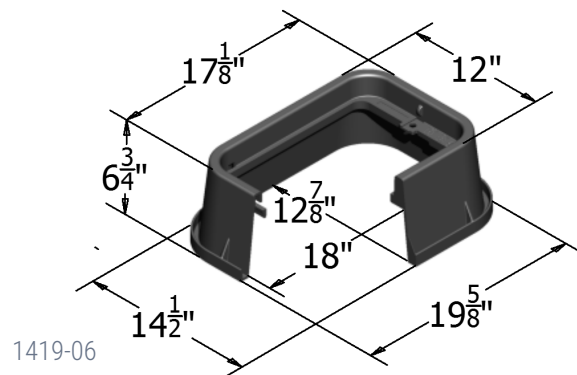
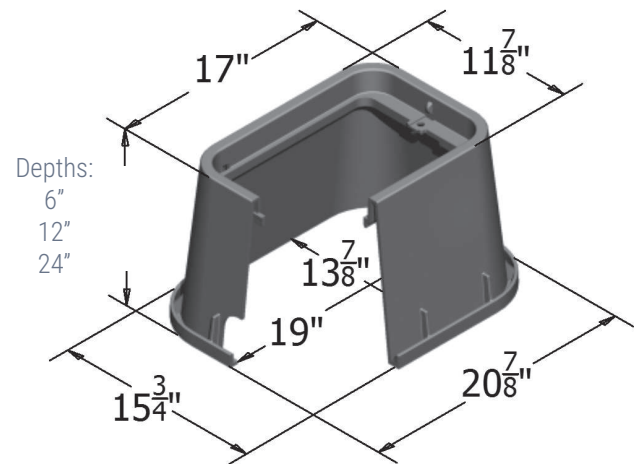
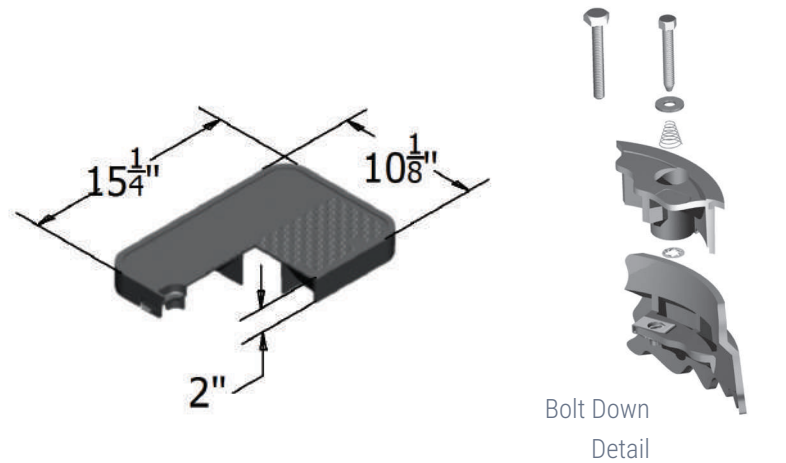
Material:	HDPE
Model:	14" x 19"
Weight:	6" Depth: 5lbs

LOAD RATING / NOTES



LIGHT DUTY
PEDESTRIAN / GREENBELT

For use in non-vehicular traffic situations only.
Weights and dimensions may vary slightly.
Actual load rating is determined by the box
and cover combination.



1419

CARSON® Spec Grade

COVER OPTIONS

HDPE, T-Cover Solid
HDPE, T-Cover with Plastic Reader Door
HDPE, T-Cover with Cast Iron Reader Door
HDPE, T-Cover Hinged
HDPE, Flush Solid
HDPE, Flush with Plastic Reader Door
HDPE, Flush with Cast Iron Reader Door
HDPE, Flush Hinged

COLOR OPTIONS

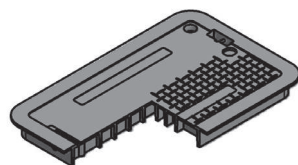
Cover: Black, Green, Gray, Tan, Purple
Body: Black, Green, Gray, Tan, Purple
Extension: Black, Green, Gray, Tan, Purple

FASTENER OPTIONS

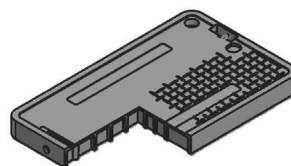
Hex Head Bolt (A)
Penta Head Bolt (B)
Penta Head Coil Thread Bolt (B)
Oldcastle Vandal Resistant Bolt (C)
Captive Bolt Retainer
Drop-N-Lock™

ADD ON OPTIONS

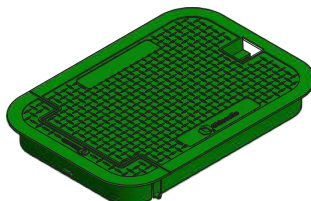
AMR Friendly Solutions
Touch Read Hole
EMS Marker
Racking Provision



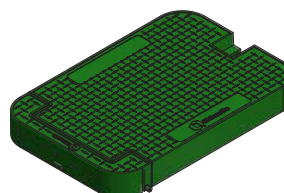
T-Cover Solid



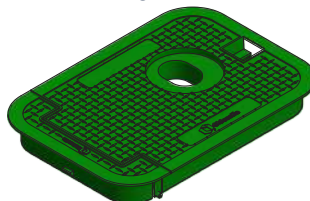
Flush Solid



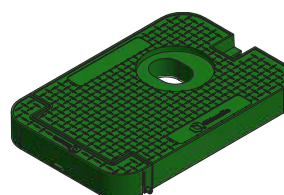
T-Cover Hinged



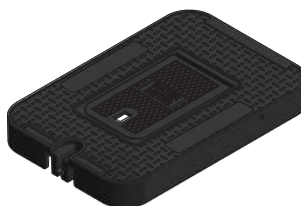
Flush Hinged



T-Cover Hinged
with AMR Recess



Flush Hinged
with AMR Recess



Reader Door Detail



Standard Thread



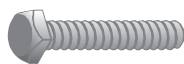
A



B



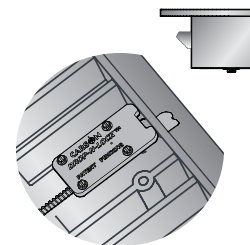
C



Coil Thread



Bolt Retainer
(for standard thread)



Drop-N-Lock
(T-Cover only)



EMS Marker

WARNING: Cancer - www.P65Warnings.ca.gov

All information contained on this sheet is current at the time of publication.
Oldcastle reserves the right to discontinue or update product information without notice.

Authorized Distributor

CONNECT

Connect Telecommunications Solutions Inc.

650 Rupert St | Waterloo, ON | N2V 2R8

Toll Free: 1-877-900-7996

© 2018 Oldcastle Infrastructure