



MAGNETIC SEPARATOR HA



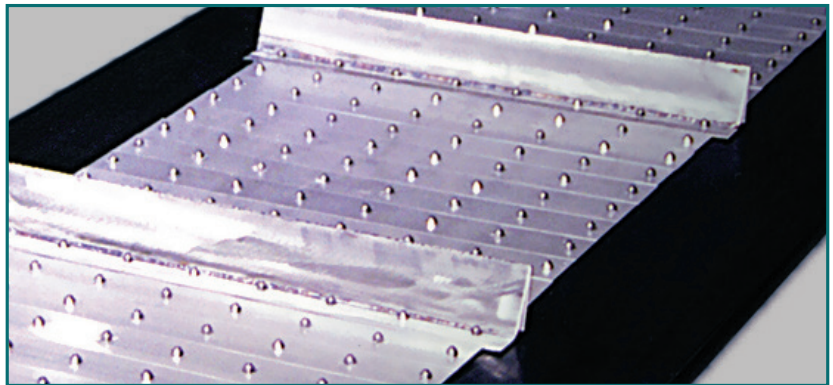
Crafted for optimal performance in a vast array of applications, our magnetic separator belts are industry standouts.

These products, ranging from abrasion-resistant rubber to cut-and-gouge resistant urethane, are the result of extensive expertise in belt innovation. Enhance your efficiency and experience the difference with solutions that are not just products, but pathways to improved productivity and operational success.

Armor-Clad Belts

Armor-Clad belts are a durable solution fortified with metal plates and stainless steel cleats, ensuring longevity and performance in environments where sharp, heavy objects are common. The stainless steel plates safeguard the belt's impact areas, enhancing durability where it's needed most.

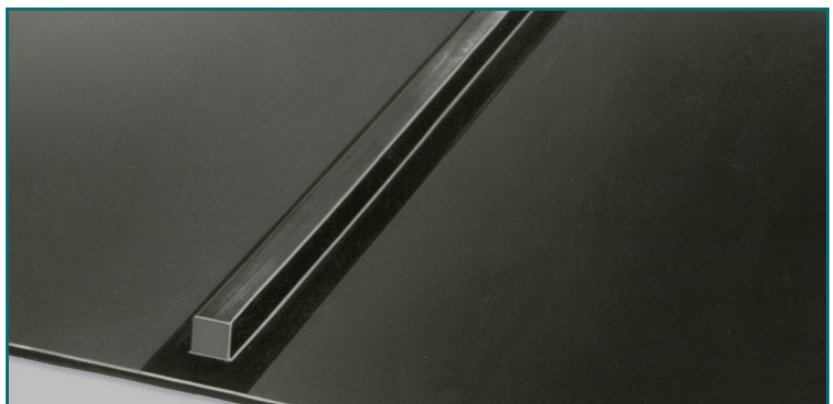
- ✓ Concrete recycling plants
- ✓ Steel reclamation plants
- ✓ Solid waste facilities
- ✓ UHMWPE cladding can be used to reduce weight



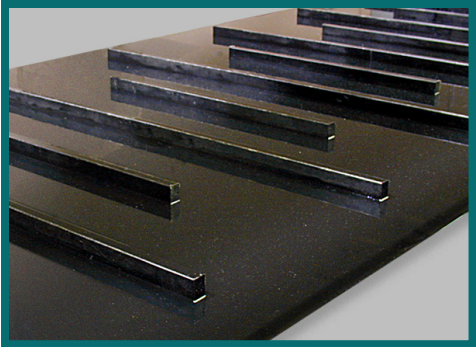
Rubber Belts

Magnetic separator belts isolate scrap metal from conveyed material through a suspended magnet mechanism. These belts efficiently capture and transport unwanted metal out of the magnetic zone, depositing it into a designated collection area.

- ✓ Coal handling
- ✓ Cement
- ✓ Recycling (trash, aluminum, tires)
- ✓ Food production, as well as many other types of manufacturing



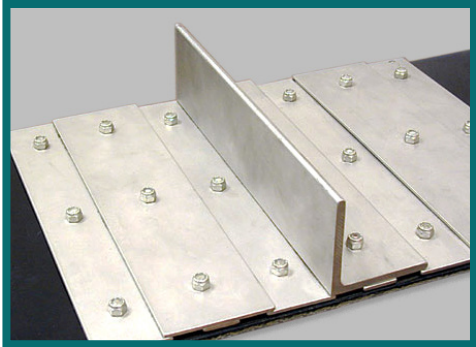
We also offer stainless steel angle iron cleats and urethane belts. Angle iron cleats can be applied to heavy duty rubber belting. Urethane belts can also be improved by adding ceramic chips to increase abrasion resistance.



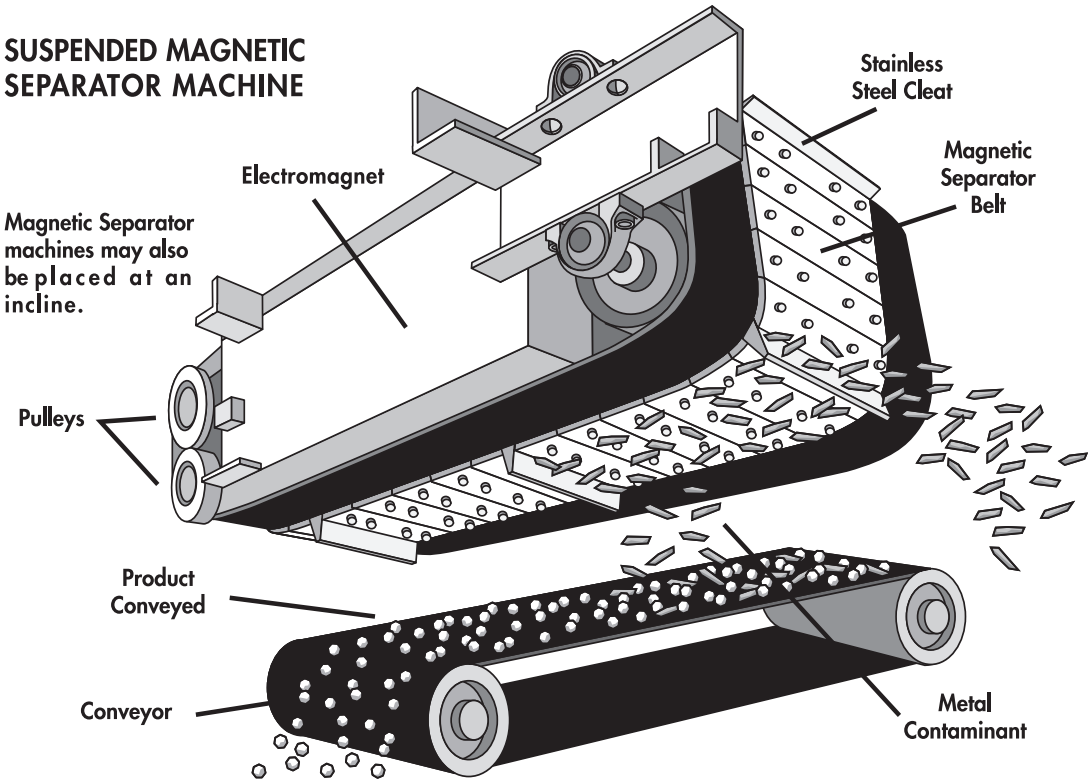
Urethane Belt



Ceramic Chip Cover

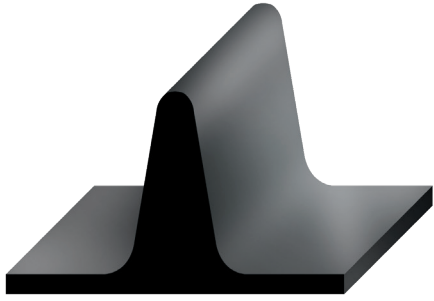


Stainless Steel Angle Iron Cleat



	Hot Vulcanized	Stainless Steel	Urethane Cleats	Ceramic Chips	Angle Iron
Heavy Duty Rubber	•	•			•
Urethane			•	•	
Perforated					•

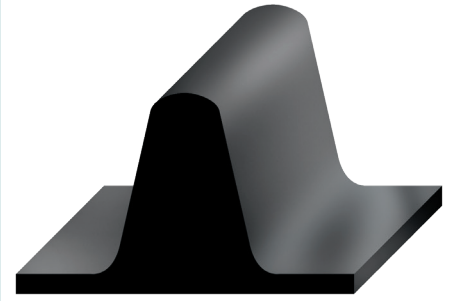
Rubber Cleat Profile



Molded Standard Cleats
1/2" to 6" tall



Molded Square Cleats
3/8", 1/2", 3/4", 1" tall



Molded Beefy Cleats
1" to 6" tall

Splices Available

Our extensive range of splices are made to meet the demands of virtually any magnetic separation application. The first main option is our mechanical fasteners. Available in a variety of metals, such as stainless steel, these fasteners ensure durability and compatibility with your specific needs. In addition to mechanical options, we also offer vulcanized splices. These splices are designed to deliver unmatched strength and reliability, ensuring optimal belt longevity and performance.



Mechanical Splice



Vulcanized Endless