



WEAR PARTS

Our premium wear parts are made to specific standards to keep your belts protected.

Each wear part is designed to absorb impacts and resist cuts and abrasion in the harshest of applications.



BELTSERVICE
CORPORATION

Wear parts come in many different styles to help your belts survive all kinds of tough applications.

Highly abrasive rubber, lagging and impact bars all reduce wear to keep your system running. Keeping belt wear at a minimum means better efficiency, less downtime and longer belt life.

"We have the parts for you!"

When your belt does need a little fixing, super screw lacing and Eli-flex are perfect for quick repairs. Whether you're installing a new system or maintaining an old one, we have the parts for you! Choose the right wear parts and keep your belts running in severe conditions confidently.

✓ Minimizes stress on equipment

✓ Improves equipment lifespan

✓ High abrasion resistance

✓ Easy installations & repairs

Skirtboard Rubber/Chute Lining

Used at the point of loading for guiding product onto the center of the belt and for protecting metal parts. Also useful for the lining of metal and wood chutes, hoppers and troughs. Commonly found in construction, sand and gravel operations, quarries, mines and in feed and grain applications.

- Stocked at 100' & 50' Long x 48" wide, cut to width and length available

Dimensions:

- 1/8"
- 1/4"
- 3/8"
- 1/2"
- 1"



A large, solid orange rubber sheet is shown at an angle, highlighting its thickness and smooth surface.

Orange Rubber

Our 45 durometer natural orange rubber is made with enhanced abrasion, cut and tear resistance and commonly used on chute liners and heavy duty skirting.

This special rubber outlasts comparable materials and has a softer seal for product containment, providing protection from dust and other contaminants.

Dimensions:

- 4" – 60" widths
- 1/4", 3/8", 1/2", 3/4" or 1" thick
- 50' standard roll length

A cross-section of a black rubber sheet is shown, revealing a multi-layered construction with a dark outer layer and a lighter inner layer.

Combi Rubber

Combi rubber's outstanding wear resistance and abrasion-resistant dual durometer design is fantastic for belt scrapers. Heavy-duty outer layers handle the scraping while softer inner layers work as a wiper.

Coupled with considerably longer wear life than commercial SBR, these features make combi rubber perfect for wet and sticky materials.

- Stocked at 50' long x 60" wide, cut to width and length available

Dimensions:

- 4" – 60" widths
- 1" thick

Durometer:

- BGB: 80/50/80

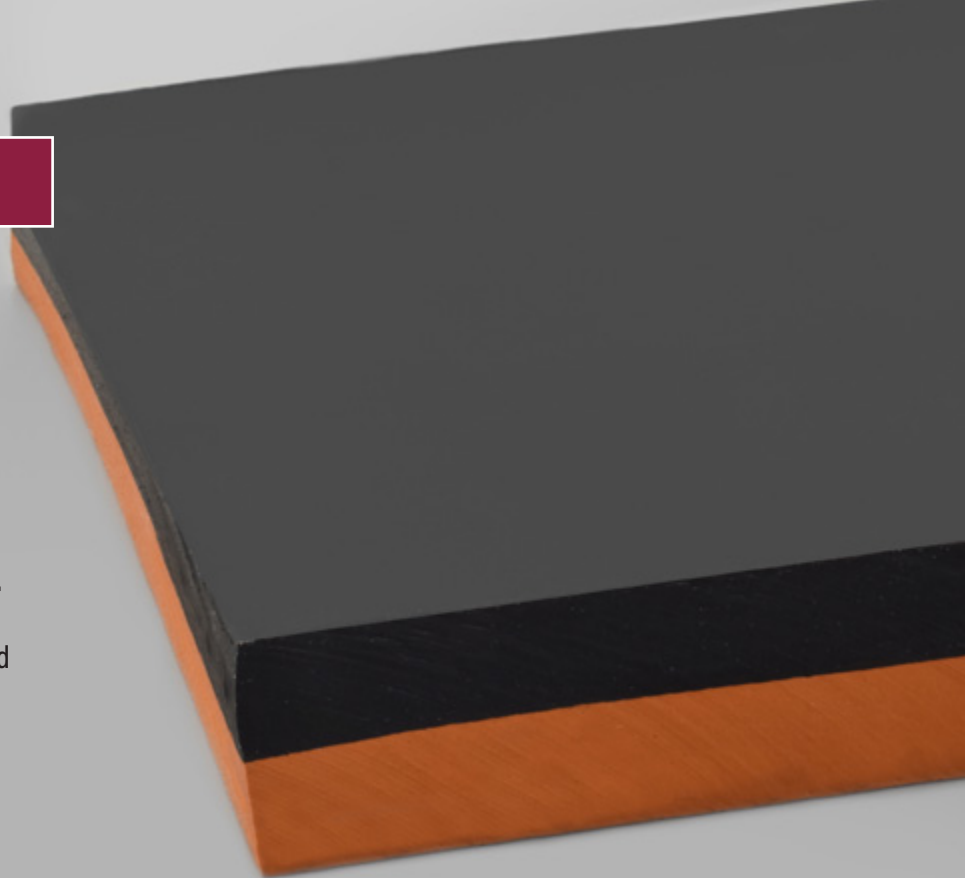
Dual Durometer Rubber

Dual performance advantages of 45 Duro orange and 60 Duro black rubber provide multiple advantages for cleaning and abrasion resistance. The 60 Duro side is rigid enough to scrape the belt and absorbs impact. The 45 Duro side wipes the belt clean of any remaining particles and provides excellent sealing properties. Excellent for impact zones, belt scrapers and wet & sticky applications.

- Stocked at 50' long & 60" wide, cut to width and length available

Dimensions:

- 4" – 60" widths
- 1/2"

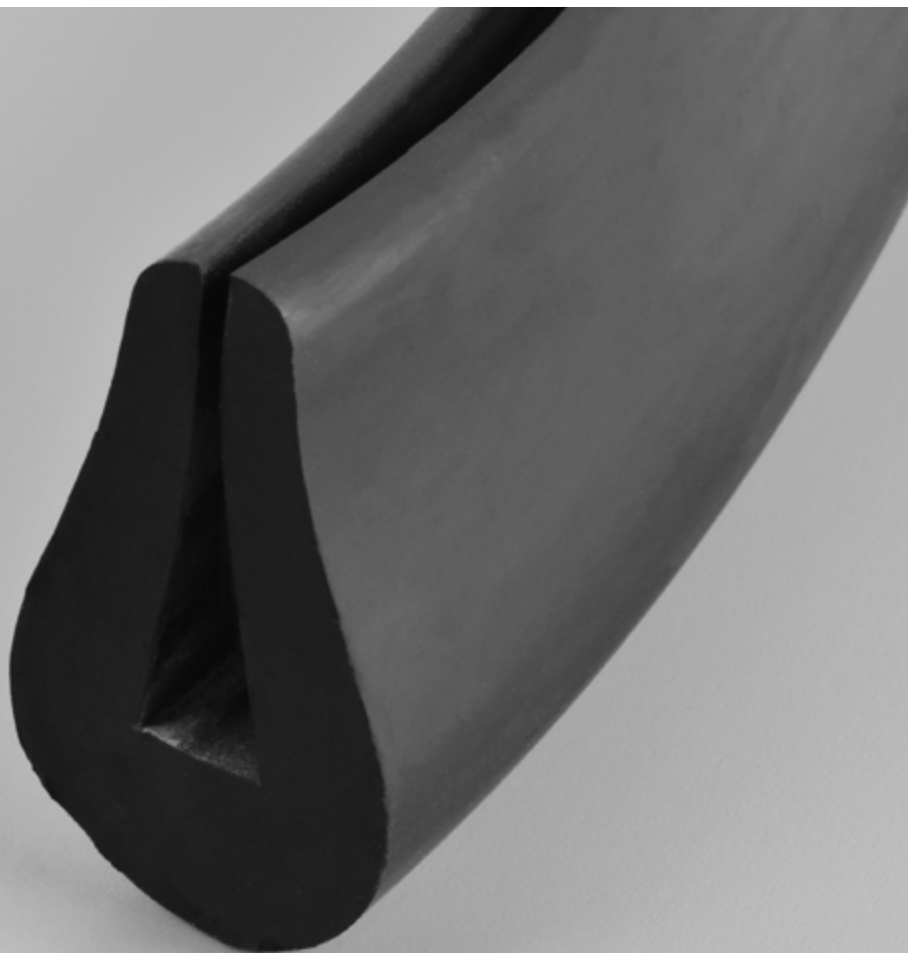
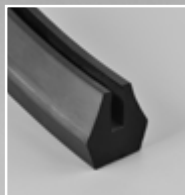
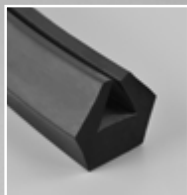
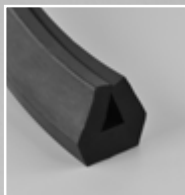


Crown Bar Rubber

Crown bar rubber is our go-to solution for minimizing stress on shaker screens. The rubber greatly reduces shock and vibration against the screen and frame to keep your equipment running longer. Packaged & ready-to-ship in 50' increments.

Available in:

- Round Top Crown Bar – 3/8" Long Leg
- Hex Top Crown Bar – 1/4"
- Hex Top Crown Bar – 3/8"
- Hex Top Crown Bar – 1/2"
- Hex Top Crown Bar – 3/4"





Impact Bars

Heavy duty impact bars provide solid, structured support to keep your belts undamaged. Each bar is made with high-quality materials carefully selected for top-tier impact and wear resistance.

It all comes together to make impact bars with exceptional belt support, extended service life and minimal impact bed maintenance requirements.

Dimensions:

- 3" height x 4" width with 3/8" blue UHMW top
- Available in 48" (4 bolts) or 60" (6 bolts) lengths



Eli-Flex

This quick-setting flexible polyurethane resin makes it easy to repair belts and rubber components without any special tools or skills. Just mix the twin packs and follow the application instructions to fix common damage:

Holes | Tears | Gouges | Worn patches | Frayed edges

The end result is a product with high resistance to impacts, abrasion, wear and tears, plus flame retardancy and protection from many different chemicals.

Coverage at 1/16" depth

| | |
|-------|---------------|
| 100 g | 1 sq. ft. |
| 150 g | 1 1/2 sq. ft. |
| 300 g | 3 sq. ft. |
| 500 g | 4 1/2 sq. ft. |

Setting time per 1/6" depth

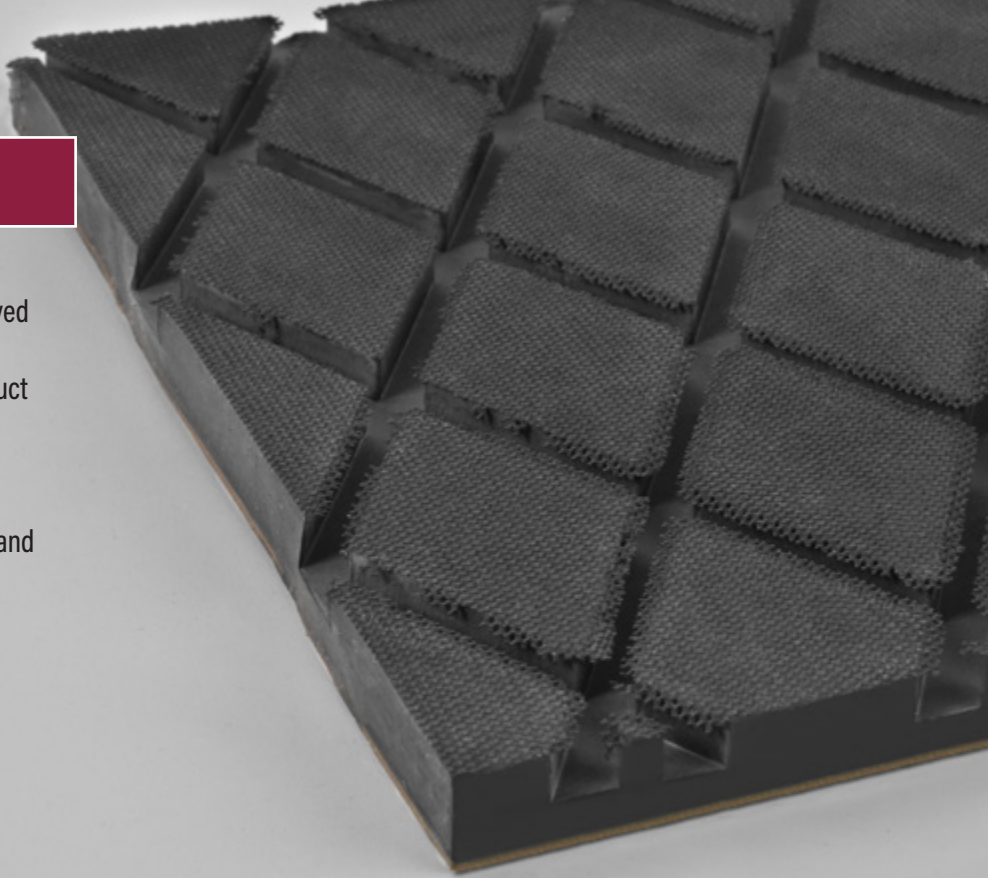
| | |
|------|-------------|
| 45°F | 50 - 60 min |
| 77°F | 25 - 30 min |
| 95°F | 20 - 25 min |

Diamond Lagging

Our diamond lagging makes the most out of a relieved pattern. The design is made to maintain maximum surface contact with the belt while still giving product fines, moisture and water room to escape.

Popular applications include lightweight & small diameter pulleys, reversing conveyor drive pulleys and low to medium tension fabric belts.

- Stocked at 50' long x 60" wide, cut to width and length available



Prime Drive Lagging

Prime drive lagging is an easy-to-install replacement for welded on lagging. The diamond rubber profile uses a wing design with pre-drilled bolt holes. No adhesives or chemicals are needed, meaning it can be used as soon as field installation is complete.

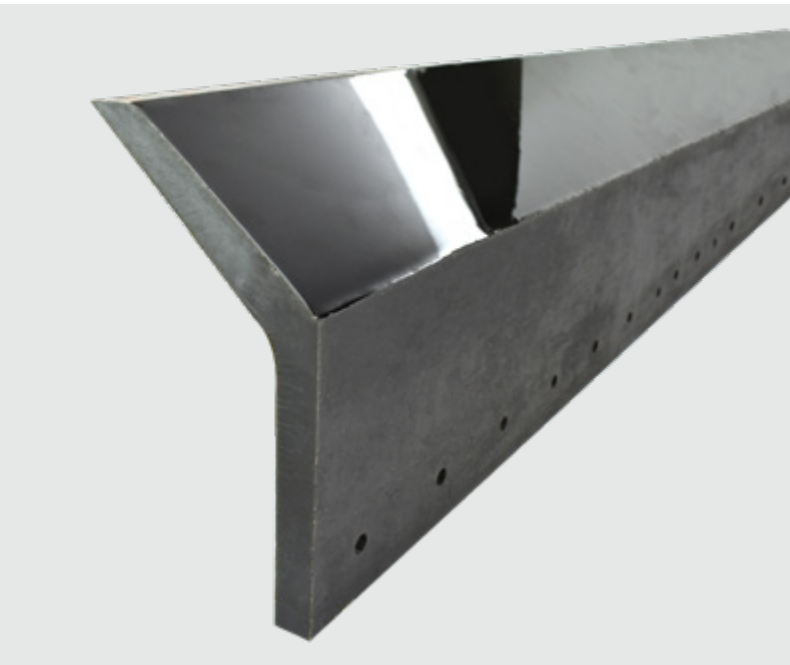
Available in 5 1/2" x 72" flexible strips that support 10" to 72" diameter pulleys.





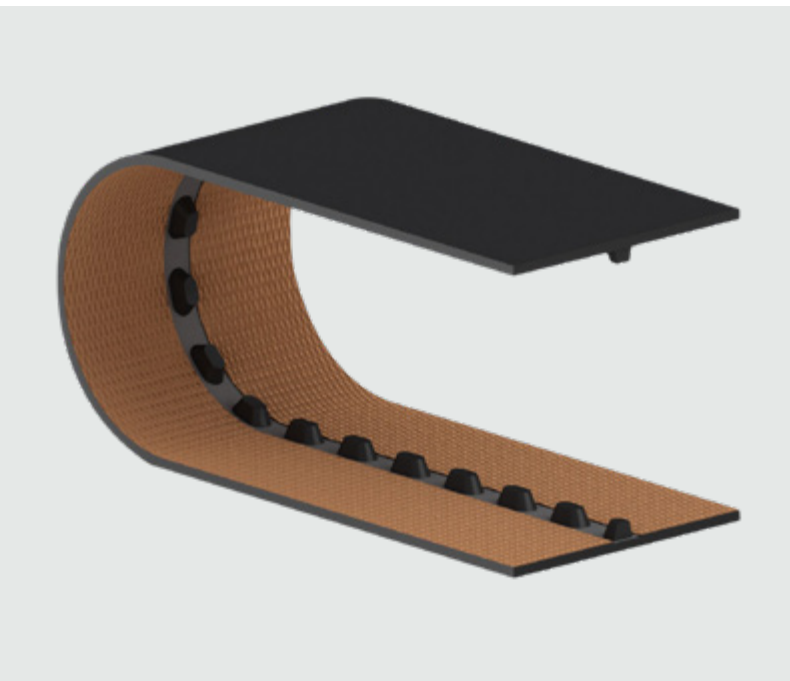
Belt Scrapers

Belt scrapers of all types can be made from urethane. Different gauges, widths and heights are all available along with your choice of square or beveled edges. Urethane scrapers are far superior to the common rubber style of scrapers.



Cleat Blades

Urethane cleat blades are offered in the "S" and "I" cleat profiles with heights ranging from 5 1/2" to 15 1/4" tall. Blades that are 5 1/2" to 11" tall are 3/4" thick while >11" height are 1 1/4" thick.



Segmented V-Guide

Segmented V-guides are extremely resistant to abrasion and perform well with smaller pulleys due to their flexibility. Available in A-B-C sections.

- A (1/2" wide x 5/16" high)
- B (5/8" wide x 1/2" high)
- C (7/8" wide x 5/8" high)

LOCATIONS



St. Louis, MO - Headquarters

4143 Rider Trail North | Earth City, MO 63045
314-344-8500 | 800-727-2358

Boise, ID

696 W Amity Rd
Boise, ID 83705
208-342-4681 | 800-423-4469

Philadelphia, PA

21 Cabot Blvd E
Langhorne, PA 19047
215-295-1900 | 800-777-1314

Vancouver, WA

7401 NE 47th Ave
Vancouver WA, 98661
360-567-4280 | 800-234-2358

Sacramento, CA

1424 N Market Blvd
Sacramento, CA 95834
916-419-7191 | 800-289-2358

Charlotte, NC

9540 Julian Clark Ave
Huntersville, NC 28078
704-949-2100 | 800-849-2358

Carmichaels, PA

Beltservice Lightweight Division
2 Industrial Park Rd
Carmichaels, PA 15320
800-928-9995

International

Beltservice Canada Co.

2330 Millrace Court Unit 1
Mississauga, ON L5N 1W2, Canada
905-565-9217 | 877-210-7423

Beltservice de Mexico

Carretera Estatal 100
El Colorado Higuierillas #4200 - Lote 22-A
76295 Municipio de Colon - Queretaro
+52 55 53620434

BeltTS Italy

Via Risorgimento, 8 22044
Inverigo CO, Italy
314-344-8500 | 800-727-2358



beltservice.com

