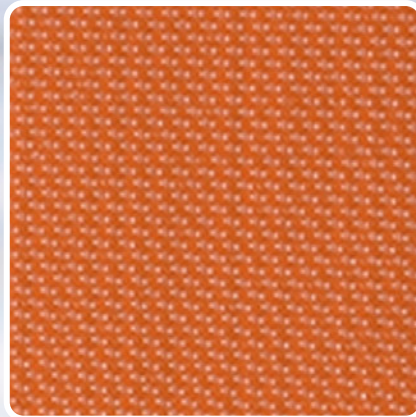




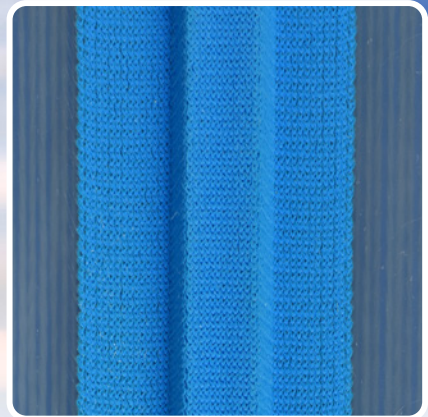
# LIVE ROLLER BELTS



LVR-60



LRB-50



LVRQ-70



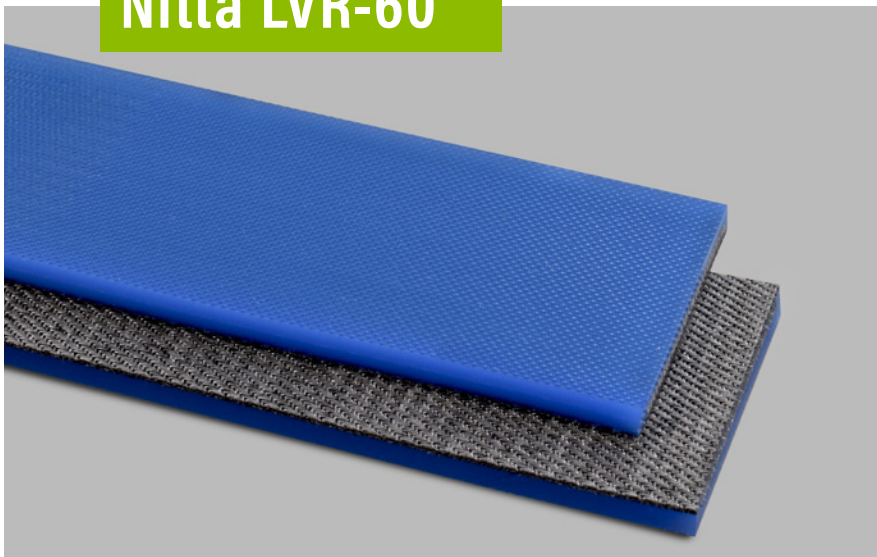
# LVR-60 | LVRQ-70 | LRB-50

**LVR-60** and **LRB-50** are two of our top solutions for belt under roller style conveyors, especially those that run at the longest distances and highest speeds across distribution centers.

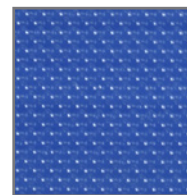
For a more specialized solution we also carry the **LVRQ-70** with an integral v-guide to eliminate guide delamination, covered with a polyamide fabric that reduces friction and increases belt lifespan.

- High Strength & Load Capacity
- Long Distance Runs
- Aramid Cords
- Low Friction Backside Fabric
- Easy to Finger Splice

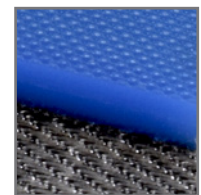
## Nitta LVR-60



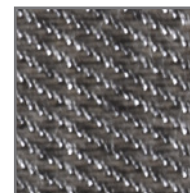
Textured  
Blue TPU



High Strength  
Aramid Cords

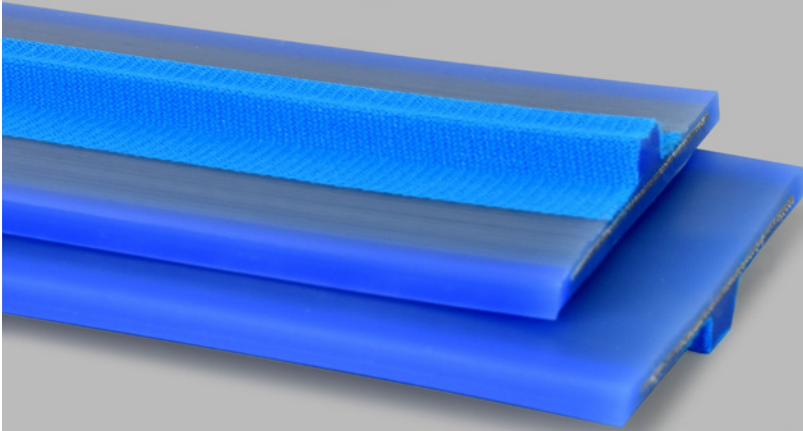


Knit Fabric  
Bottom Surface

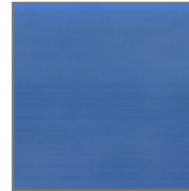


Catalog #	Thickness	Tensile Member	Tensile Strength	Min. Pulley Diameter	Standard Elongation	Anti-static	Top Surface	Bottom Surface
<b>Nitta LVR-60</b>	4.5 mm	Aramid Cords	700 N/mm	110 mm	0.5%	Yes	Blue TPU	Polyamide Fabric

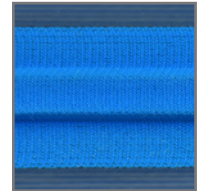
## Beltservice LVRQ-70



Smooth  
Blue PU

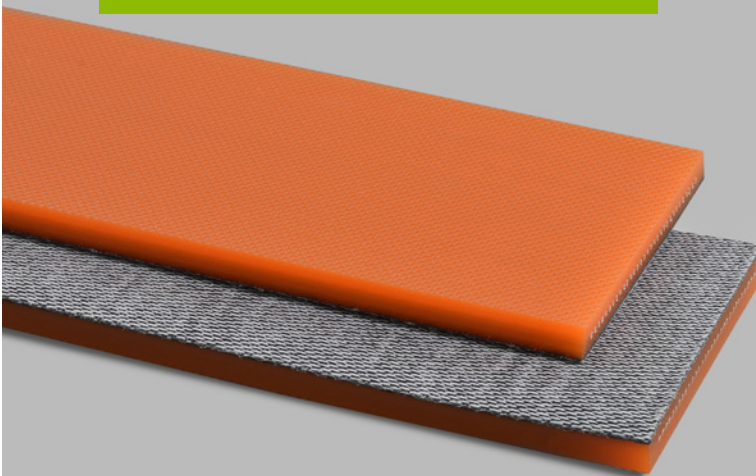


Polyamide  
Fabric Covered  
V-Guide

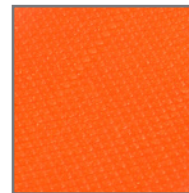


Catalog #	Thickness	Tensile Member	Tensile Strength	Min. Pulley Diameter	Standard Elongation	Anti-static	Top Surface	Bottom Surface
<b>LVRQ-70</b>	9.5 mm	Aramid Cords	700 N/mm	90 mm	0.5%	Yes	Blue TPU	Polyamide Fabric

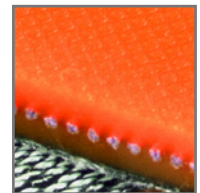
## Beltservice LRB-50



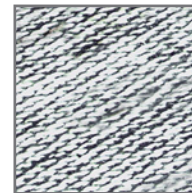
Textured  
Orange TPU



High Strength  
Aramid Cords



Knit Fabric  
Bottom Surface



Catalog #	Thickness	Tensile Member	Tensile Strength	Min. Pulley Diameter	Standard Elongation	Anti-static	Top Surface	Bottom Surface
<b>LRB-50</b>	4.5 mm	Aramid Cords	500 N/mm	110 mm	0.5%	Yes	Orange TPU	Knit Fabric

# Make Finger Splicing Simple & Quick

Nitta quick splice tools will let you install your next live roller belt fast & easy, splicing your belt together in as little as 17.5 minutes!

These compact budget-friendly tools make on-site finger splicing easy, especially compared to the average competitor tools that weigh twice as much.

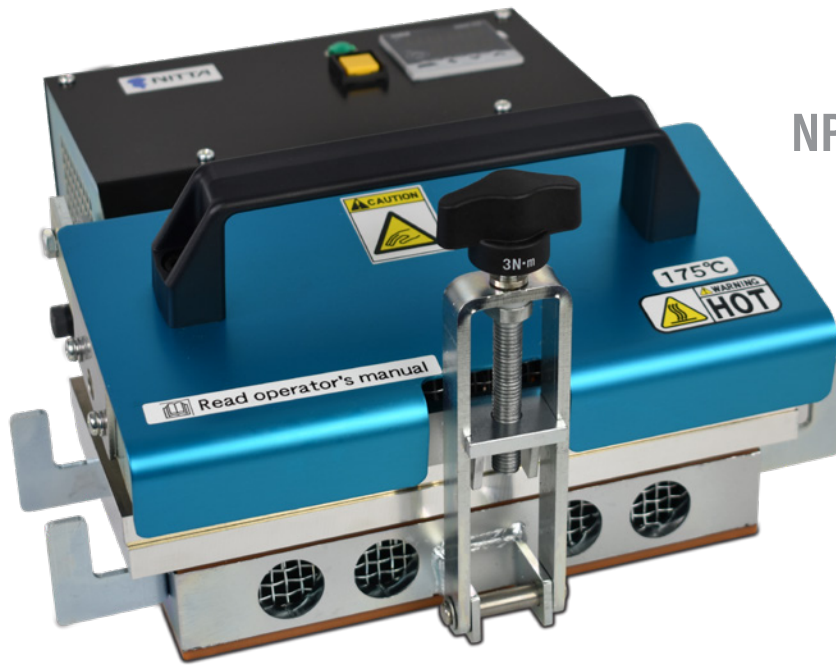
- Tooling is available for LVR-60, LRB-50 and LVRQ-70



FP-200R Finger Puncher

Metal Presetter





NPS-2005R-1 Press



LVR-Impression Fabric



Resin Presetter

# LVR-60 Product Comparison Chart

TEST	Details	Nitta LVR-60	Competitor 1	Competitor 2	Competitor 3
Construction	Thickness	4.5 mm	4.8 mm	4.5 mm	4.2 mm
	Top Cover	TPU	TPU	TPU	TPU
	Bottom Cover	Polyamide Fabric	Polyamide Fabric	Polyamide Fabric	Polyamide Fabric
Coefficient of Friction	Top Cover	0.55	0.4	0.69	0.375
	Bottom Cover	0.125	0.18	0.14	0.125
	Comments	<p><b>Competitor 1</b> belt urethane surface COF is 27% lower than Nitta LVR-60.</p> <p><b>Competitor 1</b> belt fabric surface COF is 44% higher than Nitta LVR-60.</p> <p><b>Competitor 2</b> belt urethane surface COF is approx. 20% higher than Nitta LVR-60.</p> <p><b>Competitor 2</b> belt fabric surface COF is almost identical to Nitta LVR-60.</p> <p><b>Competitor 3</b> belt urethane surface COF is approx. 30% lower than Nitta LVR-60.</p> <p><b>Competitor 3</b> belt fabric surface COF is almost identical to Nitta LVR-60.</p>			
Tensile Strength	Comments	<p><b>Competitor 1</b> belt tensile strength is approx. 60% lower than Nitta LVR-60.</p> <p><b>Competitor 2</b> belt tensile strength is approx. 25% lower than Nitta LVR-60.</p> <p><b>Competitor 3</b> belt tensile strength is approx. 3% lower than Nitta LVR-60.</p>			
Tension Relaxation	Comments	<p><b>Competitor 1</b> tension property is approx. 60% lower than Nitta LVR-60.</p> <p><b>Competitor 2</b> tension property is approx. 50% lower than Nitta LVR-60.</p> <p><b>Competitor 3</b> tension property is approx. 30% lower than Nitta LVR-60.</p>			
Abrasion Resistance (Compared to Nitta LVR-60)	Top Cover	n/a	Almost the same as Nitta LVR-60	Abrasion loss is approx. 3.4 times that of Nitta LVR-60	Abrasion loss is approx. 1.2 times that of Nitta LVR-60
	Bottom Cover	n/a	Almost the same as Nitta LVR-60	Abrasion loss is approx. 1.4 times that of Nitta LVR-60	Abrasion loss is approx. 1.2 times that of Nitta LVR-60
Dynamic Bending Test	Bending Durability	$1.2 \times 10^8$	$6.8 \times 10^5$	$5.7 \times 10^7$	$1.2 \times 10^8$
	Comments	Still Running	Cracks in the Urethane	Still Running	Cracks in the Urethane
Edge Abrasion Resistance	Comments	n/a	Edge loss is approx. 1.2 times that of Nitta LVR-60	Edge loss is approx. 12.5 times that of Nitta LVR-60	Almost the same as Nitta LVR-60
Conclusion	Nitta LVR-60 vs. Competitor 1	Nitta LVR-60 shows better overall performance than Competitor 1.			
		In addition, partially exposed aramid tension cords could be seen on the Competitor 1 belt during testing, whereas Nitta LVR-60's sealed edges prevented exposure.			
	Nitta LVR-60 vs. Competitor 2	Nitta LVR-60 shows better overall performance than Competitor 2.			
		Specifically, the edge loss for Competitor 2 is 12.5 times that of Nitta LVR-60, which could cause problems with skewed rollers. Competitor 2's high edge loss may lead to exposure of the cords, which could fray and wrap around pulleys.			
	Nitta LVR-60 vs. Competitor 3	Nitta LVR-60 shows better overall performance than Competitor 3.			
		The position of the aramid cords in the Competitor 3 belt is near the top urethane surface, compared with LVR-60 where the cords are centered. If there is an abrasion on top surface of the Competitor 3 belt, damage to the aramid cords could result.			

# Logistics Belts



Catalog Number	Description	Application									
		Flame Retardant	Horizontal Conveyor	Accumulation	Incline / Decline	Gapper / Accelerator	Power Turn	Live Roller	Motor Driven Roller	Telescoping Conveyor	Box Taper
SNTC-RB22A	GREEN LR PU X BLUE KNIT FABRIC					●	●			●	
TA12-BK	CLEAR TAFFETA PU X BLACK FI PU			●			●			●	
LVR-60	BLUE FI PU / ARAMID CORD / FABRIC								●		
LRB-50	ORANGE FI PU / ARAMID CORD / FABRIC								●		
LVRQ-70	BLUE PU/ARAMID CORD/BLUE FABRIC COVERED V-GUIDE								●		
92	PVC 120 BLACK FS X BR FR	🔥	●	●				●			
95	PVC 150 BLACK FS X BR FR	🔥	●	●							
98	PVC 200 BLACK FS X BR FR	🔥	●	●							
139FBS	PHSW 125 BLACK PVC F X B FR	🔥	●	●							
139COS	PHSW 125 BLACK PVC C X B FR	🔥	●								
139HT	PHSW 150 BLACK PVC F X B FR	🔥	●	●							
139LFO	PHSW 150 BLACK PVC LF SB X B FR	🔥	●	●							
139MFO	PHSW 150 BLACK PVC MF SB X B FR	🔥	●	●							
139LR	PHSW 150 BLACK PVC LR X B FR	🔥	●			●					
139HFS	PHSW 200 BLACK PVC F X B FR	🔥	●	●							
116FR	2 PLY BLACK PVC ROUGH TOP FLAME RETARDANT	🔥				●					
116J	E10/2 0/V37 JRT GREEN QW NA					●					●
54FR	2 PLY 150 BLACK RT X B FR	🔥				●		●			
138	2 PLY 160 BLACK LI X B FR	🔥				●		●			
104C	E10/2 0/V0 BLACK QW AS FR	🔥	●	●							
107ASB-FR	E8/2 U0/V5 BLACK M QW AS FR	🔥	●								
118A	E5/1 0/V8 LG BLACK AS FR	🔥				●	●				
118BLTFR	2 PLY BLACK PVC BASKET WEAVE FLAME RETARDANT	🔥				●	●				
118IDFR	2 PLY BLACK PVC INVERTED DIAMOND FLAME RETARDANT	🔥	●								
118FR	E10/2 0/V14 LG BLACK QW AS FR	🔥				●	●				
118HAL	E14/2 U0/RMV11 LR GREEN AS					●	●				
118R	E14/2 0/V45 LG RED AS					●					●
139A	NW 25 BLACK HC		●	●							
139B	NW 40 BLACK HC		●	●				●		●	
139D	NW 33 BLACK HC		●	●							
140BBS	NW 150 BLACK RMV F X F FR	🔥	●					●		●	
140FBS	NW 150 BLACK PVC F X F FR	🔥	●	●				●		●	
140HMSD	NW 150 BLACK RMV SB X F FR	🔥	●					●		●	
140LR	NW 150 BLACK PVC LR X F FR	🔥				●					●
140MFO	NW 250 BLACK PVC SB X F AS FR	🔥	●					●		●	
140RT	NW 150 BLACK PVC RT X F FR	🔥				●					●
141Q	NW 120 BLACK PVC HM X F FR	🔥	●					●		●	
304TFR	2 PLY 160 MONO SBR BARE X BARE FR	🔥	●	●							
304MFR	2 PLY 90 MONO SBR BARE X BARE FR	🔥	●	●							
304QFR	3 PLY 200 MONO SBR QW X QW FR	🔥	●	●							
133	2 PLY POLY 69 BLACK PVC IP AS FR	🔥						●			
133D	2 PLY POLY 69 BLACK PVC ID AS FR	🔥						●			
134	2 PLY POLY 69 BLACK PVC AS FR	🔥						●			
134HD	2 PLY POLY 65 BLACK PVC AS FR	🔥						●			
134M	2 PLY POLY 69 BLACK PVC MATTE AS FR	🔥						●			
134SG	2 PLY POLY BLACK PVC SAND GRIT AS FR	🔥						●			

# LOCATIONS



## St. Louis, MO - Headquarters

4143 Rider Trail North | Earth City, MO 63045  
314-344-8500 | 800-727-2358

### Boise, ID

696 W Amity Rd  
Boise, ID 83705  
208-342-4681 | 800-423-4469

### Charlotte, NC

9540 Julian Clark Ave  
Huntersville, NC 28078  
704-949-2100 | 800-849-2358

### Vancouver, WA

7401 NE 47th Ave  
Vancouver WA, 98661  
360-567-4280 | 800-234-2358

### Sacramento, CA

1424 N Market Blvd  
Sacramento, CA 95834  
916-419-7191 | 800-289-2358

### Philadelphia, PA

21 Cabot Blvd E  
Langhorne, PA 19047  
215-295-1900 | 800-777-1314

### Carmichaels, PA

**UBR Lightweight Products**  
2 Industrial Park Rd  
Carmichaels, PA 15320  
800-928-9995

## International

### Beltservice Canada Co.

2330 Millrace Court Unit 1  
Mississauga, ON L5N 1W2, Canada  
905-565-9217 | 877-210-7423

### Beltservice de Mexico

Carretera Estatal 100  
El Colorado Higuierillas #4200 - Lote 22-A  
76295 Municipio de Colon - Queretaro  
+52 55 53620434

### BeltTS Italy

Via Risorgimento, 8 22044  
Inverigo CO, Italy  
314-344-8500 | 800-727-2358



[beltservice.com](http://beltservice.com)

