



<b>Catalog #</b>	<b>80d</b>
<b>Item number:</b>	<b>24157</b>
<b>Description:</b>	3 Ply 600 3/8in x 1/8in
<b>International Designation:</b>	N/A

<b>Pulley Diameter, Minimum</b>	
Min. Pulley Dia. - Head @ 80 - 100% Tension	24.00 in
Min. Pulley Dia. - Head @ 60 - 79% Tension	20.00 in
Min. Pulley Dia. - Head @ 59% Tension or Below	18.00 in
Minimum Pulley Diameter- Tail	18.00 in

<b>Construction:</b>	
Compound Top Cover	Black SBR
Color	Black
Top Cover Thickness (in)	(9.53 mm) 3/8 in
Top Cover Description	Smooth
Compound Bottom Cover	Black SBR
Bottom Cover Thickness (in)	(3.18 mm) 1/8 in
Bottom Cover Description	Smooth
Number of Plies	3
Overall Gauge (in)	(18.03 mm) 45/64 in
Unit Weight- lb/PIW	0.3700 lbs/PIW
Carcass Type	Poly/Nylon
Compound	Black SBR
Temperature Range (°F)- High	225 °F
Temperature Range (°F)- Low	-25 °F

<b>Splice Instructions:</b>	
Splice Step Size	16.00 in
Splice Process	Step Hot

<b>Other:</b>	
Static Conducting	No
Cross Rigid	No
High Heat	No
Impression Top	No
Oil Resistant	No
Fire Resistant	No
FDA Approved	No

<b>Belt Strength:</b>	
Tension Rating (PIW)	600 PIW

<b>Suggested Fasteners:</b>	
Flexco Plate/Rivet	BR-10/R6
Flexco Hinged	N/A
Alligator Staple	N/A
Clipper Lace	N/A
Alligator Lace	N/A

**Special Characteristics:**  
This belt offers high strength and impact resistance, coupled with abrasion resistance and long flex life. Used primarily on high-tension conveyors with long centers or in abusive situations.

\*\*\*\*All Values are nominal and subject to change without notice.\*\*\*\*

<b>St. Louis, MO</b> 800-727-2358 314-344-8500	<b>Boise, ID</b> 800-423-4469 208-342-4681	<b>Charlotte, NC</b> 800-849-2358 704-949-2100	<b>Grand Prairie, TX</b> 800-727-2358 314-344-8555	<b>Philadelphia, PA</b> 800-777-1314 215-295-1900	<b>Sacramento, CA</b> 800-289-2358 916-419-7191	<b>Vancouver, WA</b> 800-234-2358 360-567-4280	<b>Beltservice Canada</b> 877-210-7423 905-565-9217	<b>Beltservice de Mexic</b> +52 55 53620434 +44 2980 3266
--	--	--	--	---	---	--	---	---

# GRADE 2

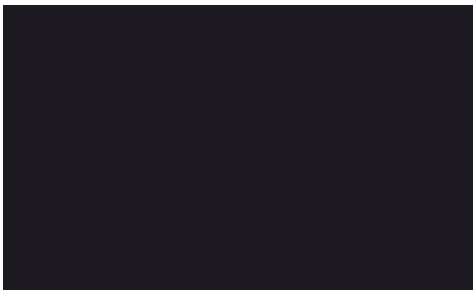
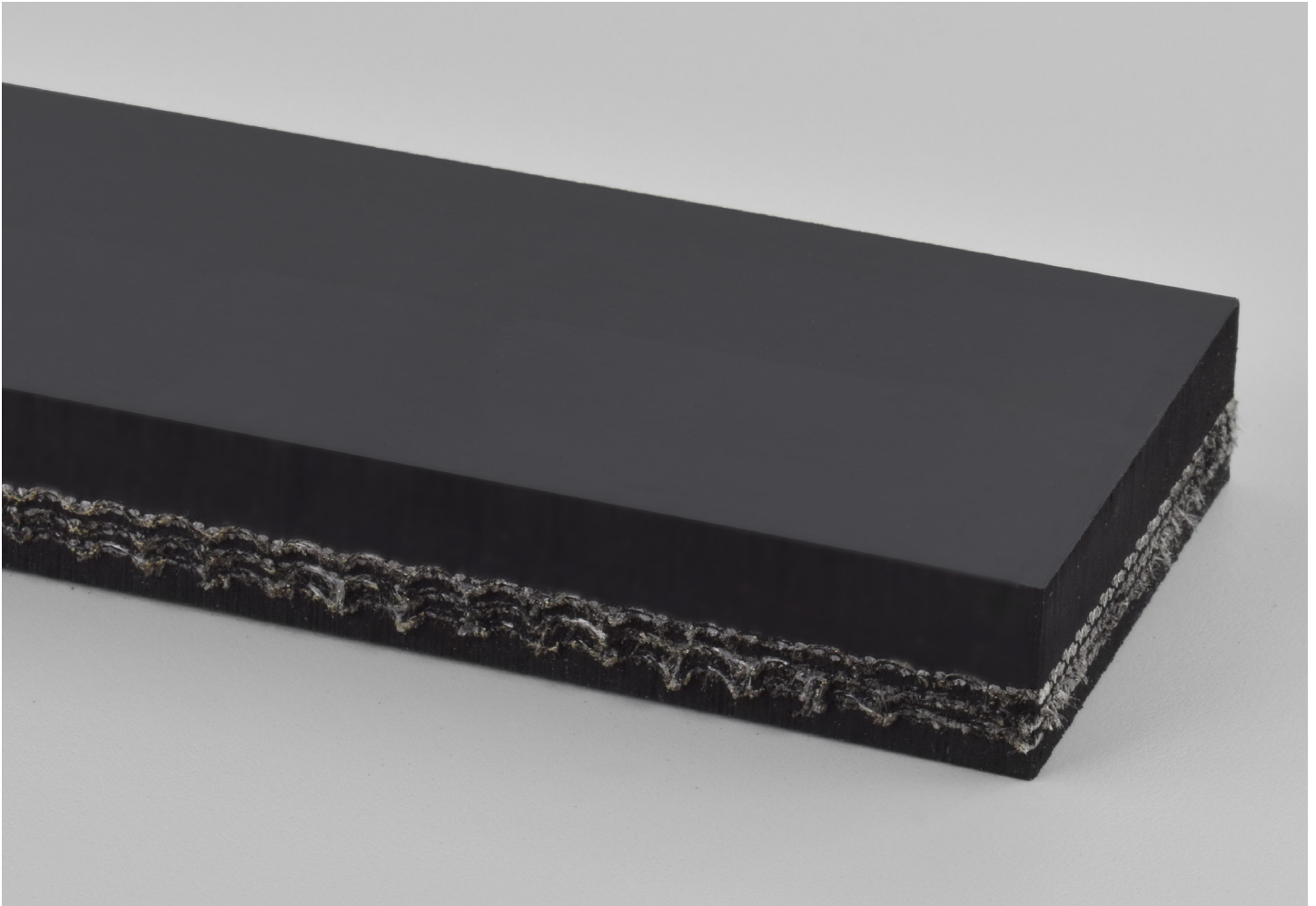
3 PLY 600 PIW 3/8 X 1/8

**80d**

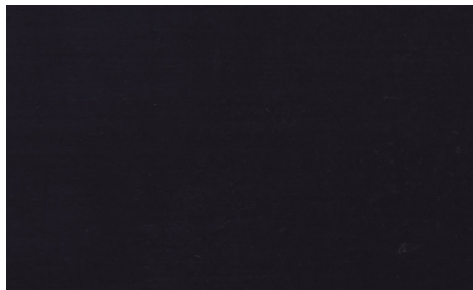
Catalog Number

**24157**

Part Number



Top Cover View



Bottom Cover View



Ply View