



Catalog #	140
Item number:	10552
Description:	2 Ply 220 1/8in x 1/16in Cleat Top MOR
International Designation:	N/A

Pulley Diameter, Minimum	
Min. Pulley Dia. - Head @ 80 - 100% Tension	16.00 in
Min. Pulley Dia. - Head @ 60 - 79% Tension	14.00 in
Min. Pulley Dia. - Head @ 59% Tension or Below	10.00 in
Minimum Pulley Diameter- Tail	10.00 in

Construction:	
Compound Top Cover	Black MOR
Color	Black
Top Cover Thickness (in)	(3.30 mm) 1/8 in
Top Cover Description	Cleated
Compound Bottom Cover	Black MOR
Bottom Cover Thickness (in)	(1.60 mm) 1/16 in
Bottom Cover Description	Smooth
Number of Plies	2
Overall Gauge (in)	(7.15 mm) 9/32 in
Unit Weight- lb/PIW	0.2100 lbs/PIW
Carcass Type	Poly/Nylon
Compound	Black MOR
Temperature Range (°F)- High	225 °F
Temperature Range (°F)- Low	-25 °F

Splice Instructions:	
Splice Step Size	8.00 in
Splice Process	Step Hot

Other:	
Static Conducting	No
Cross Rigid	No
High Heat	No
Impression Top	Yes
Oil Resistant	Yes
Fire Resistant	No
FDA Approved	No

Belt Strength:	
Tension Rating (PIW)	220 PIW

Suggested Fasteners:	
Flexco Plate/Rivet	#140/R5
Flexco Hinged	#375 or 550
Alligator Staple	N/A
Clipper Lace	N/A
Alligator Lace	N/A

Special Characteristics:
 Made to prevent or reduce slideback on steep inclines. Chevron belting also increases conveyor capacity by quick pick-up at the point of loading. Ideal for wet and/or granular materials such as wet sand and gravel.
 NOTE: OAG DOES NOT INCLUDE THE CLEAT HEIGHT

****All Values are nominal and subject to change without notice.****

St. Louis, MO 800-727-2358 314-344-8500	Boise, ID 800-423-4469 208-342-4681	Charlotte, NC 800-849-2358 704-949-2100	Grand Prairie, TX 800-727-2358 314-344-8555	Philadelphia, PA 800-777-1314 215-295-1900	Sacramento, CA 800-289-2358 916-419-7191	Vancouver, WA 800-234-2358 360-567-4280	Beltservice Canada 877-210-7423 905-565-9217	Beltservice de Mexic +52 55 53620434 +44 2980 3266
--	--	--	--	---	---	--	---	---

INCLINE

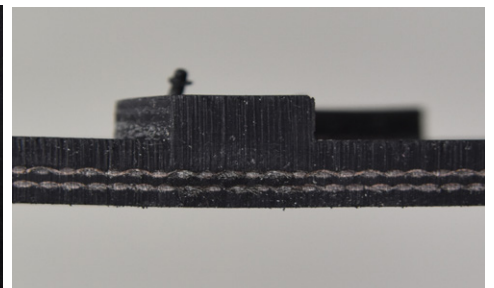
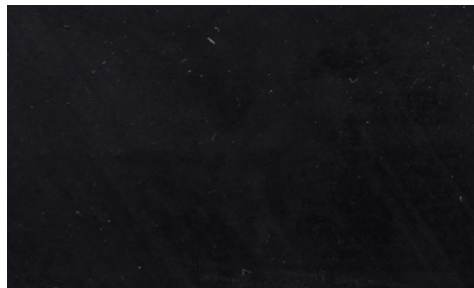
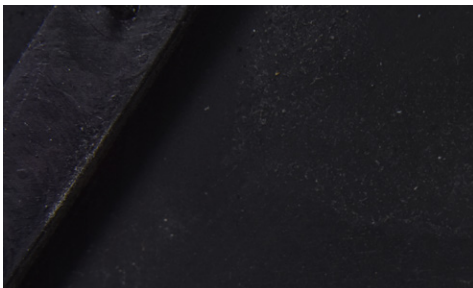
2 PLY 220 PIW 1/8 X 1/16 CLEAT TOP MOR

140

Catalog Number

10552

Part Number



Top Cover View

Bottom Cover View

Ply View