



Catalog #	83f
Item number:	50184
Description:	2 Ply 660 3/8in x 1/8in Straight Warp DIN Y
International Designation:	N/A

Pulley Diameter, Minimum	
Min. Pulley Dia. - Head @ 80 - 100% Tension	30.00 in
Min. Pulley Dia. - Head @ 60 - 79% Tension	24.00 in
Min. Pulley Dia. - Head @ 59% Tension or Below	20.00 in
Minimum Pulley Diameter- Tail	0.00 in

Construction:	
Compound Top Cover	SBR DIN Y
Color	Black
Top Cover Thickness (in)	(9.53 mm) 3/8 in
Top Cover Description	Smooth
Compound Bottom Cover	SBR DIN Y
Bottom Cover Thickness (in)	(3.18 mm) 1/8 in
Bottom Cover Description	Smooth
Number of Plies	2
Overall Gauge (in)	(19.05 mm) 3/4 in
Unit Weight- lb/PIW	0.3550 lbs/PIW
Carcass Type	Poly/Nylon
Compound	SBR DIN Y
Temperature Range (°F)- High	176 °F
Temperature Range (°F)- Low	-13 °F

Splice Instructions:	
Splice Step Size	0.00 in
Splice Process	Finger

Other:	
Static Conducting	No
Cross Rigid	No
High Heat	No
Impression Top	No
Oil Resistant	No
Fire Resistant	No
FDA Approved	No

Belt Strength:	
Tension Rating (PIW)	660 PIW

Suggested Fasteners:	
Flexco Plate/Rivet	BR-10/R6
Flexco Hinged	N/A
Alligator Staple	N/A
Clipper Lace	N/A
Alligator Lace	N/A

Special Characteristics:
 Premium Straight-Warp heavy duty belt designed specifically for the toughest conveying applications where low-stretch, impact-resistant, high-strength belt with excellent load support are required. Highly abrasion resistant, Din Y covers, are suitable for conveying large lumps, sharp edged, rugged material. i.e. iron ore, coal, lignite, copper, limestone, blast furnace slag, stone, rock, etc.

*****All Values are nominal and subject to change without notice.*****

St. Louis, MO 800-727-2358 314-344-8500	Boise, ID 800-423-4469 208-342-4681	Charlotte, NC 800-849-2358 704-949-2100	Grand Prairie, TX 800-727-2358 314-344-8555	Philadelphia, PA 800-777-1314 215-295-1900	Sacramento, CA 800-289-2358 916-419-7191	Vancouver, WA 800-234-2358 360-567-4280	Beltservice Canada 877-210-7423 905-565-9217	Beltservice de Mexico +52 55 53620434 +44 2980 3266
--	--	--	--	---	---	--	---	--

GRADE 1

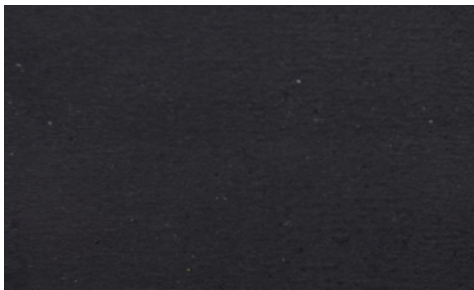
2 PLY 660 3/8 X 1/8 STRAIGHT WARP DIN Y

83f

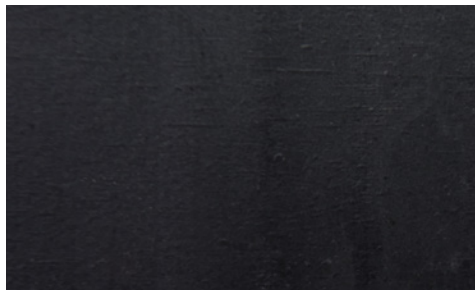
Catalog Number

50184

Part Number



Top Cover View



Bottom Cover View



Ply View